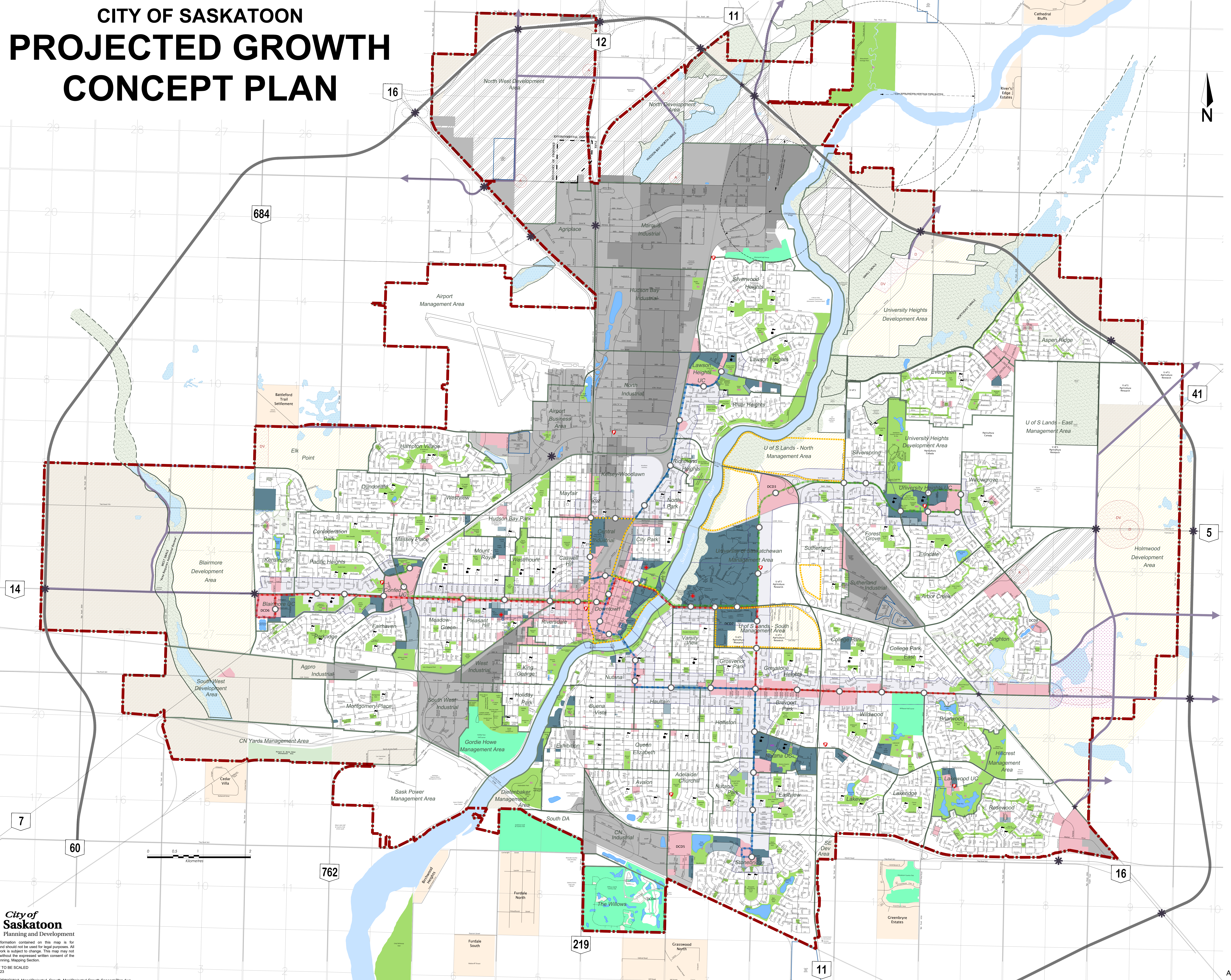
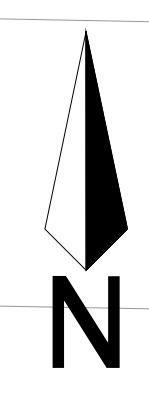
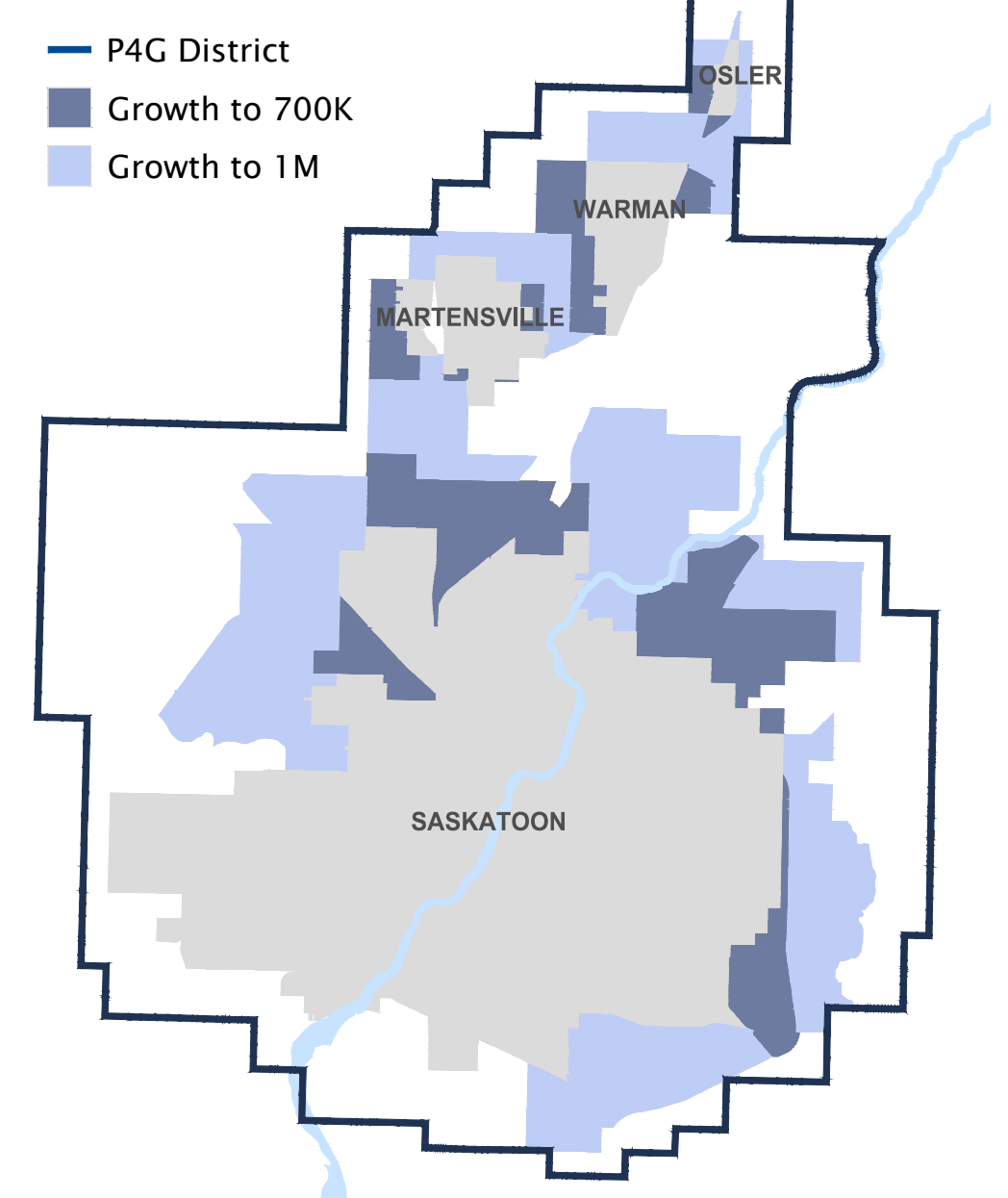


CITY OF SASKATOON PROJECTED GROWTH CONCEPT PLAN



EXISTING & APPROVED

- CITY LIMITS
- NEIGHBOURHOOD BOUNDARY
- STREET ALIGNMENT
- SASKATOON FREEWAY ALIGNMENT
- ENVIRONMENTAL, ECOLOGICAL, OR LOW LYING LAND
- BUSINESS PARK
- LIGHT INDUSTRIAL
- HEAVY INDUSTRIAL
- COMMERCIAL AND MIXED USE
- GENERAL AND CORE AREA
- INSTITUTIONAL SERVICE
- LOCAL AND COMMUNITY INSTITUTIONAL SERVICE
- COUNTRY RESIDENTIAL
- RURAL/URBAN RESERVE
- CORRIDOR GROWTH AREA
- PARKS
- NEIGHBOURHOOD
- DISTRICT
- MULTI DISTRICT
- SPECIAL USE
- INDUSTRIAL
- AFFORESTATION
- SCHOOL SITES
- PUBLIC - ELEMENTARY/SECONDARY
- SEPARATE - ELEMENTARY/SECONDARY
- OTHER
- HOSPITAL
- FIRE HALL
- STORM WATER RETENTION PONDS
- WETLANDS
- GOLF COURSE

PROPOSED

- STREET ALIGNMENT
- ARTERIAL ALIGNMENT
- URBAN HOLDING AREA
- STRATEGIC INFILL
- EMPLOYMENT AREA (BUSINESS PARK/INDUSTRIAL)
- RESIDENTIAL DEVELOPMENT
- URBAN CENTRE (RESIDENTIAL/INSTITUTIONAL)
- SCHOOL SITE
- PARK
- COMMERCIAL
- DISTRICT
- DISTRICT VILLAGE
- URBAN CENTRE
- REGIONAL RETAIL
- ARTERIAL
- OTHER
- BUS RAPID TRANSIT LINES
- STORM WATER RETENTION PONDS
- ROADWAY INTERCHANGE
- RAILWAY OVERPASS

