

Lot Draw Addendum

For:

Evergreen – Phase 3

Residential Lot Draw



NEIGHBOURHOOD: Evergreen
LOCATION: Evergreen Boulevard, Johns Road, Wyant Lane,
Zary Road and Sauer Crescent, Lane, Terrace and
Rise.

Addendum No.: 2
Page: 1 of 3
Date: November 28, 2011.

Addition to the original Lot Draw Package, released November 28, 2011.

Acknowledgement of receipt of this addendum shall be stated on the Agreement for Sale.

Registered Survey Plan and Registered Easement Plans

The attached three drawings are:

1. Registered Survey Plan #102070088 for Lots 1-17, Block 626; Lots 1-4 & 13-14, Block 646; Lots 1-7, Block 648;
2. Registered Easement Plan #102071461 for Lots 1-17, Block 626; Lots 1-4 & 13-14, Block 646; Lots 1-7, Block 648;
3. Registered Easement Plan #102074802 for Lots 7-35, Block 620; Lots 7-21, Block 621; Lots 1-15, Block 622; Lots 1-36, Block 623; Lots 1-8, Block 624; and Lots 10-15, Block 625.

Evergreen Phase 3A

Plan of Survey Showing

Surface Subdivision

of Part of

N.E. 1/4 Sec. 12 Twp. 37 Rge. 5 W3Mer.;
N.W. 1/4 Sec. 7 Twp. 37 Rge. 4 W3Mer.; &
Parcel Y Plan No. 102052875

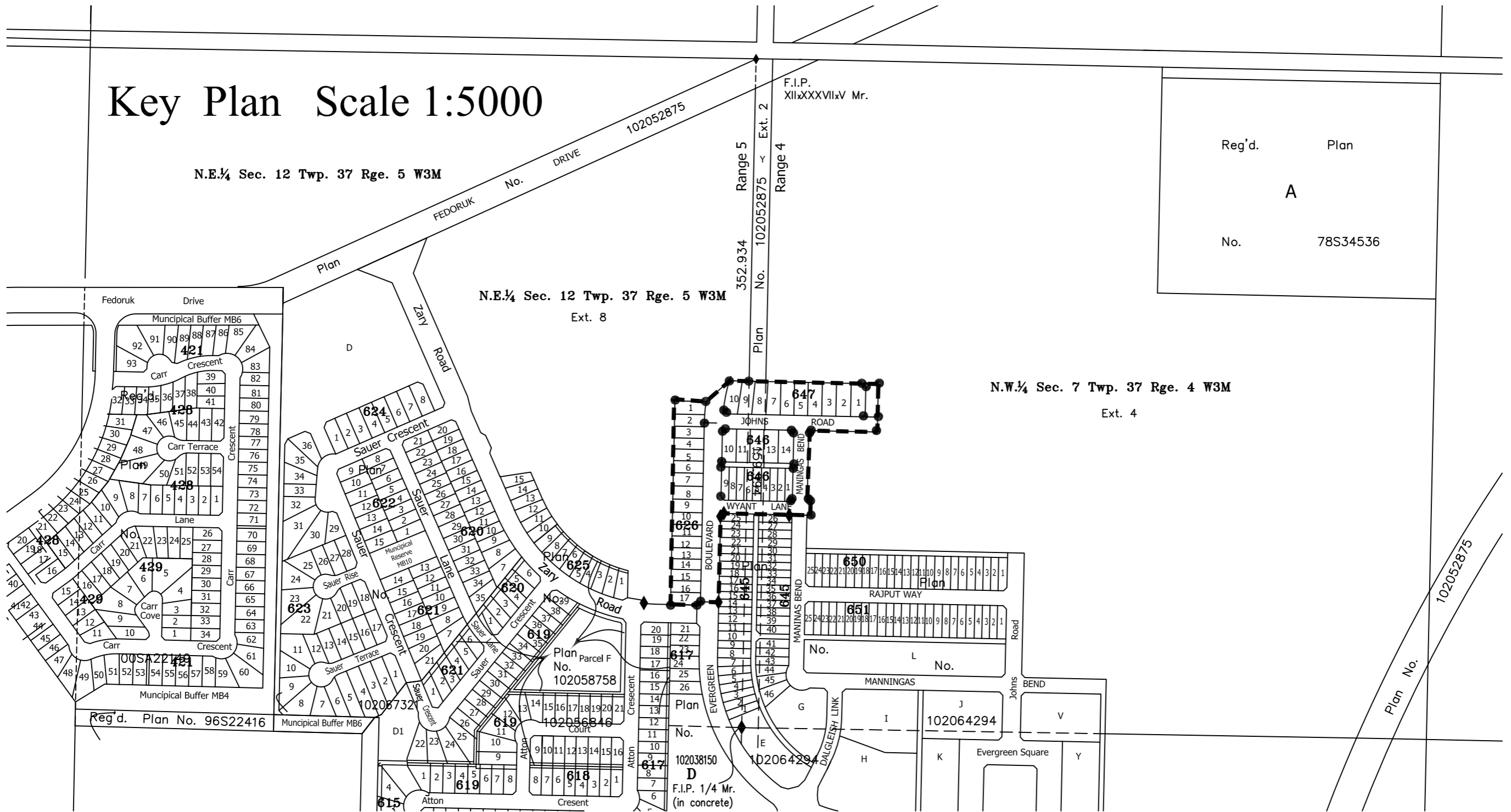
Saskatoon, Saskatchewan

By: D.V. Franko S.L.S.

July - August 2011 Scale 1:1000

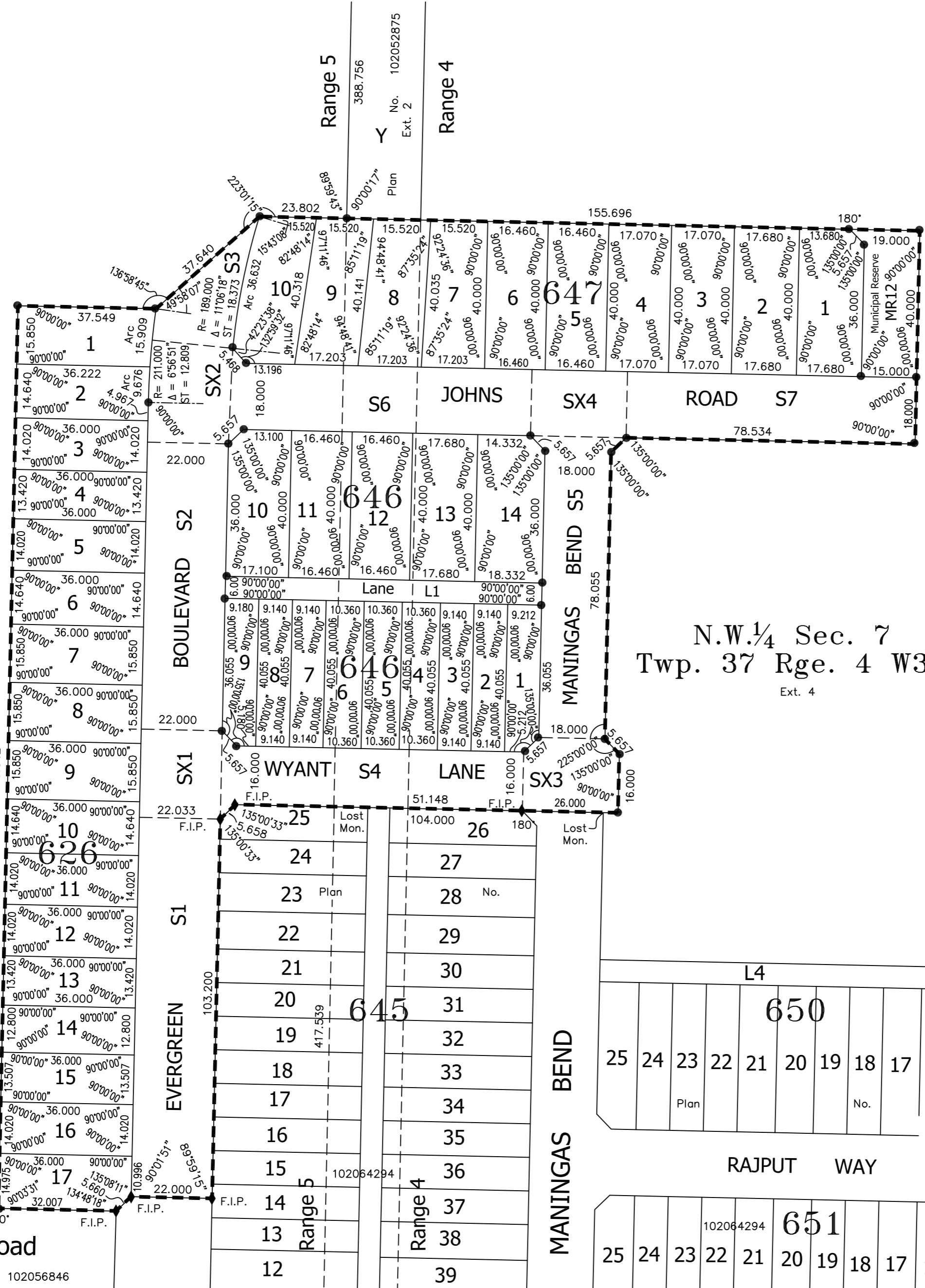
- Measurements are in metres and decimals thereof.
- Area to be approved is outlined with a heavy dashed line.
- Monuments found are shown thus.....♦
- Standard Iron posts planted and stamped S021 are shown thus.....●
- All lot corners not marked by standard iron posts are marked by 0.013ø X 0.457 long small posts.
- All parcels within the line of approval have an Extension 0.

Key Plan Scale 1:5000



Reg'd. Plan
A
No. 78S34536

N.E. 1/4 Sec. 12 Twp. 37 Rge. 5 W3M



Dedicated lands to:
City of Saskatoon
222 3rd Avenue North
Saskatoon, Sask
S7K 0J5

N.W. 1/4 Sec. 7
Twp. 37 Rge. 4 W3M
Ext. 4



PLAN PREPARED BY:
George Nicholson, Franko, & Associates Ltd.
Land Surveyors Mappers GIS Consultants

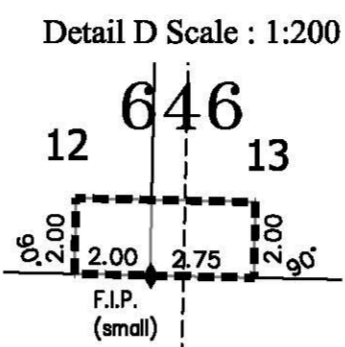
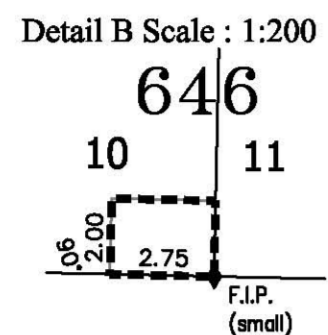
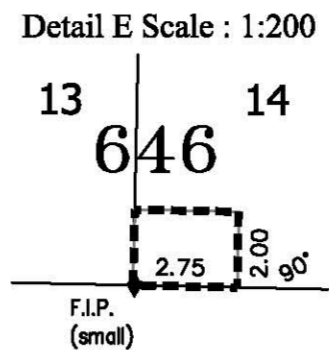
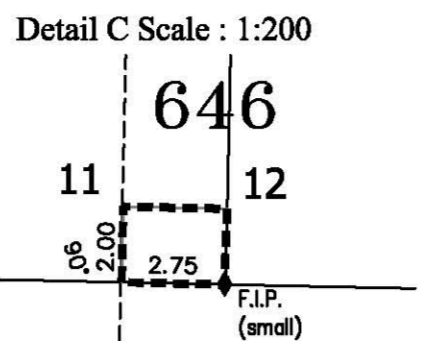
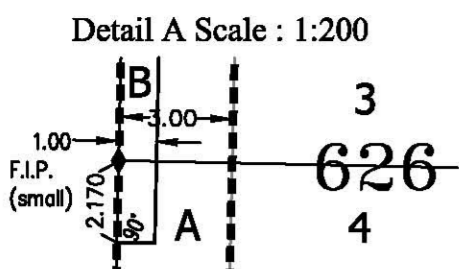
File No. Evergreen P1 -PS.dwg
Revised October 24th, 2011

Drawn by: VMM
(August 29, 2011)
October 24th, 2011

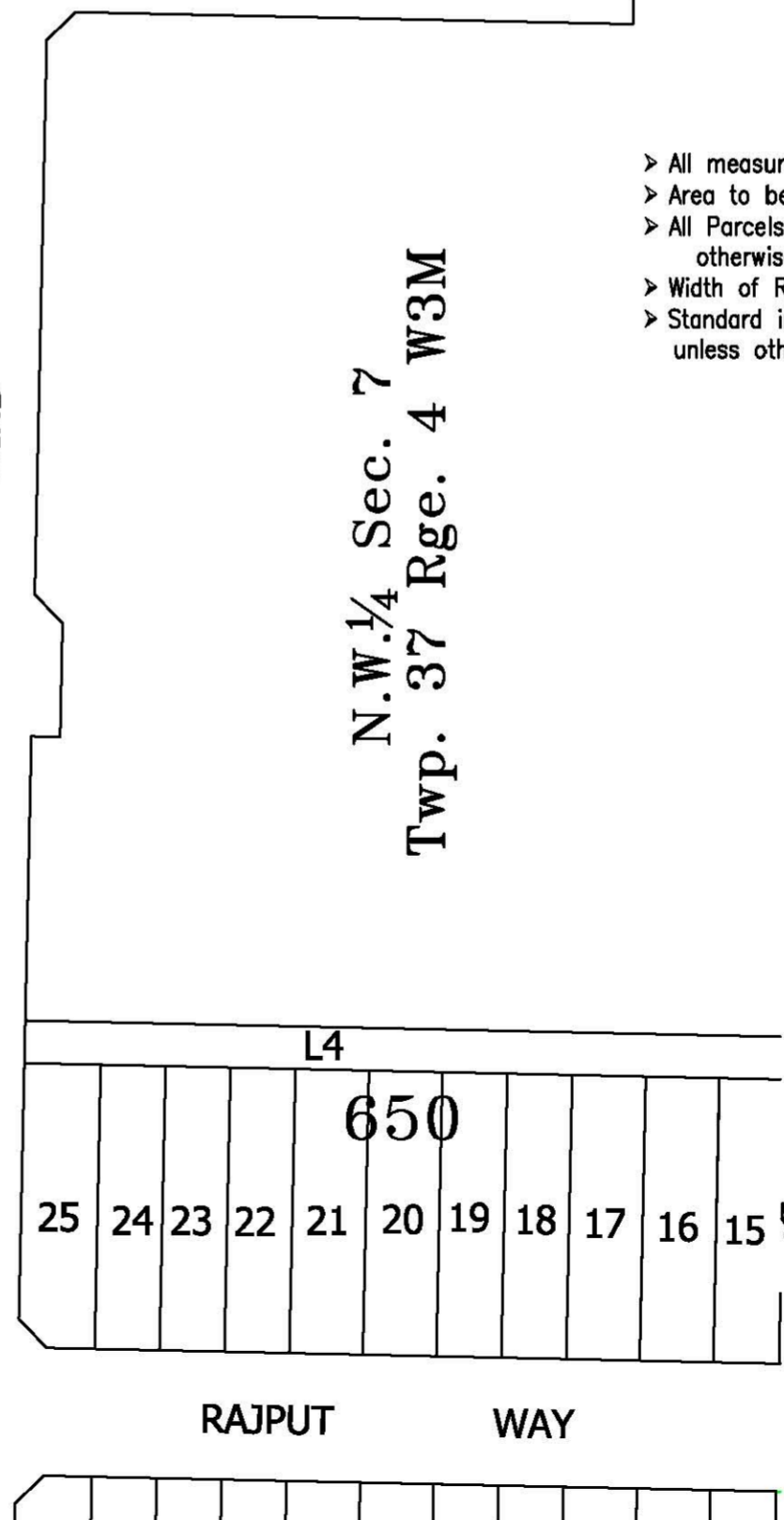
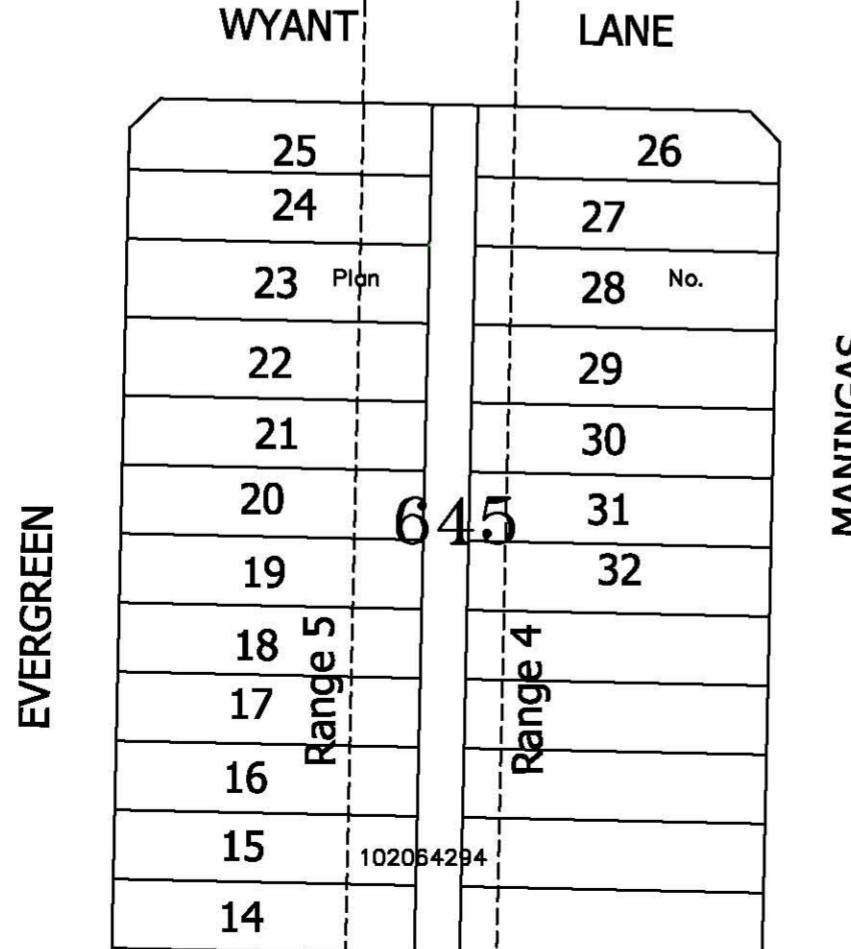
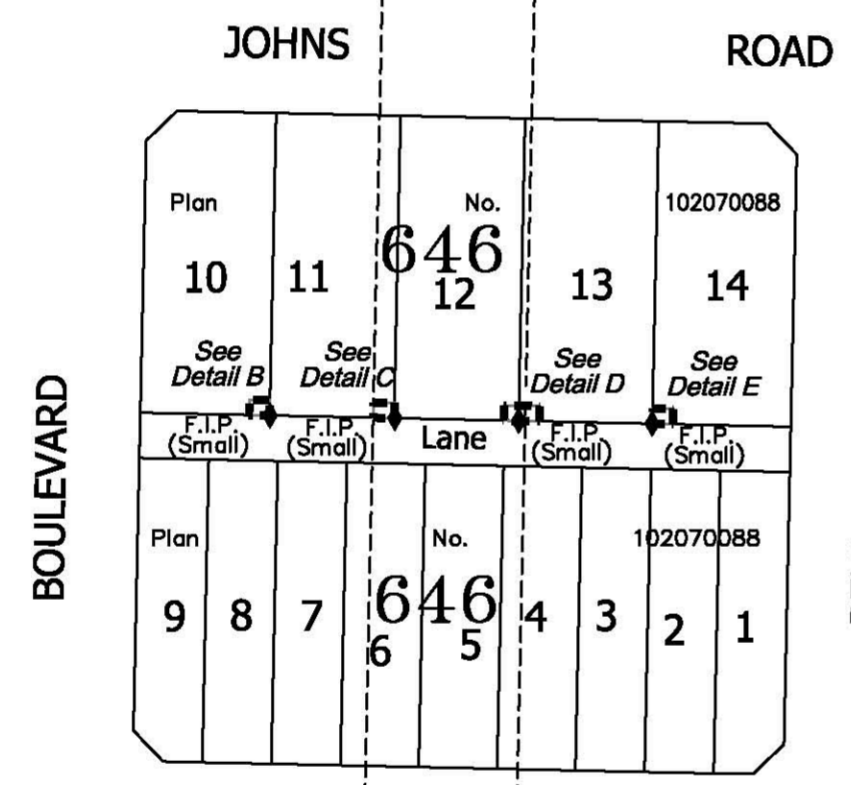
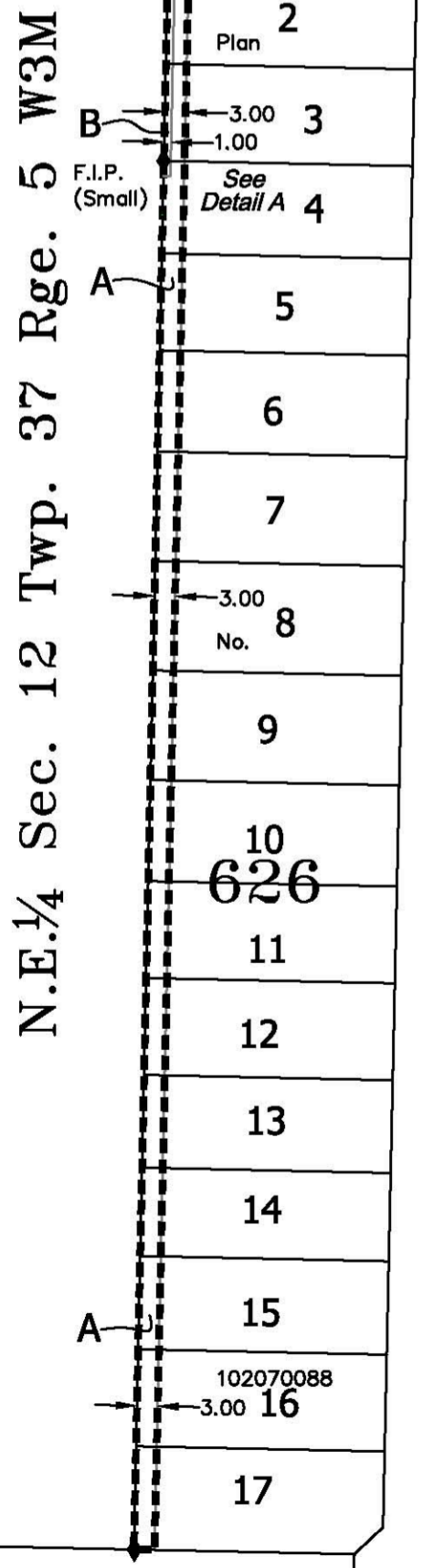
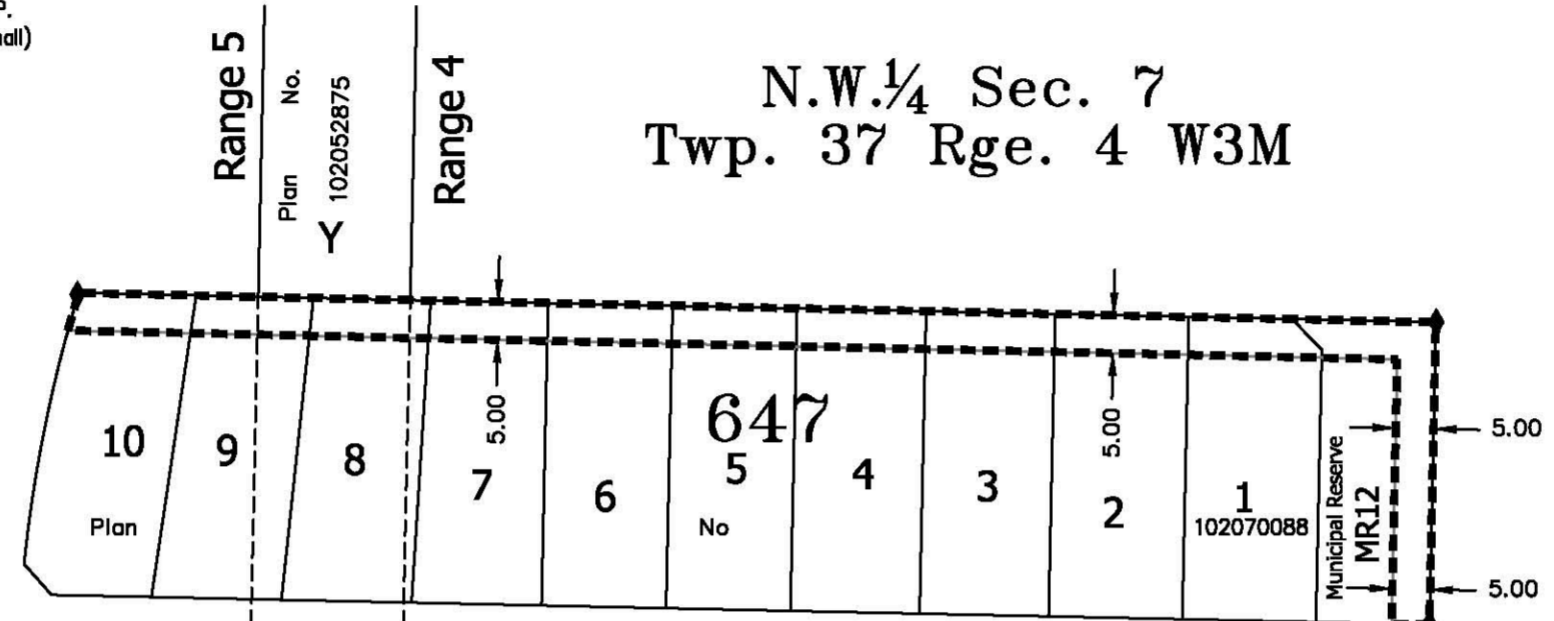


Plan No. 102056846

EVERGREEN SUBDIVISION - PHASE 3A
Descriptive Plan - Type II
Showing
Feature Utility Rights of Way
Affecting
Lots 1 to 17, Block 626;
Lots 10 to 14, Block 646;
Lots 1 to 10, Block 647;
and Municipal Reserve MR12;
Plan No. 102070088
 in
N.W. 1/4 Sec. 7 Twp. 37 Rge. 4 W3Mer;
N.E. 1/4 Sec. 12 Twp. 37 Rge. 5 W3Mer.
Saskatoon, Saskatchewan
 By: **D.V. Franko S.L.S.**
 September 12th, 2011 Scale 1:1000



N.W. 1/4 Sec. 7
 Twp. 37 Rge. 4 W3M



- > All measurements are in metres and two decimals thereof.
- > Area to be approved is outlined by a heavy bold dashed line.
- > All Parcels affected by this plan have extension 0 unless otherwise noted.
- > Width of Right of Way is as shown.
- > Standard iron posts found are shown thus unless otherwise shown.



PLAN PREPARED BY:

George, Nicholson, Franko, & Associates Ltd.
 Land Surveyors Mappers GIS Consultants

File No. Evergreen P1.-FP.dwg Drawn by: VMM (Sept. 12, 2011)

DESCRIPTIVE PLAN - TYPE II

showing
FEATURE UTILITY RIGHT OF WAY
in
Parcel D, Lots 7 to 35 Block 620, Lots 7 to 21 Block 621,
Lots 1 to 15 Block 622, Lots 1 to 36 Block 623, Lots 1 to
8 Block 624, and Lots 10 to 15 Block 625

Plan No. 102067321

N.E 1/4 Sec. 12-Twp. 37-Rge. 5-W.3rdMer.


SASKATOON, SASK.

By:
R.J. Morrison, S.L.S.

August 5, 2011

Scale 1:1000

NOTES:

MEASUREMENTS ARE IN METRES AND DECIMALS THEREOF.
AREA TO BE APPROVED IS OUTLINED IN A HEAVY DASHED LINE.
ALL PARCELS WITHIN THE APPROVAL LINE HAVE AN EXTENSION 0.
UNLESS OTHERWISE SHOWN.
MONUMENTS FOUND ARE SHOWN THUS .
WIDTH OF RIGHT OF WAY IS AS SHOWN.

N.E. 1/4 Sec. 12
37-5-W3Mer

