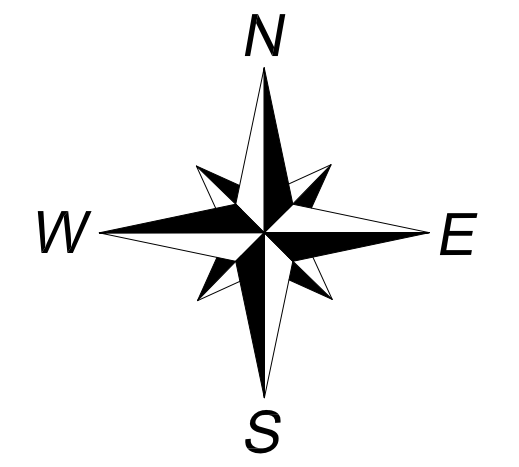


# CITY OF SASKATOON OFFICIAL COMMUNITY PLAN LAND USE MAP

BYLAW NO. 8769

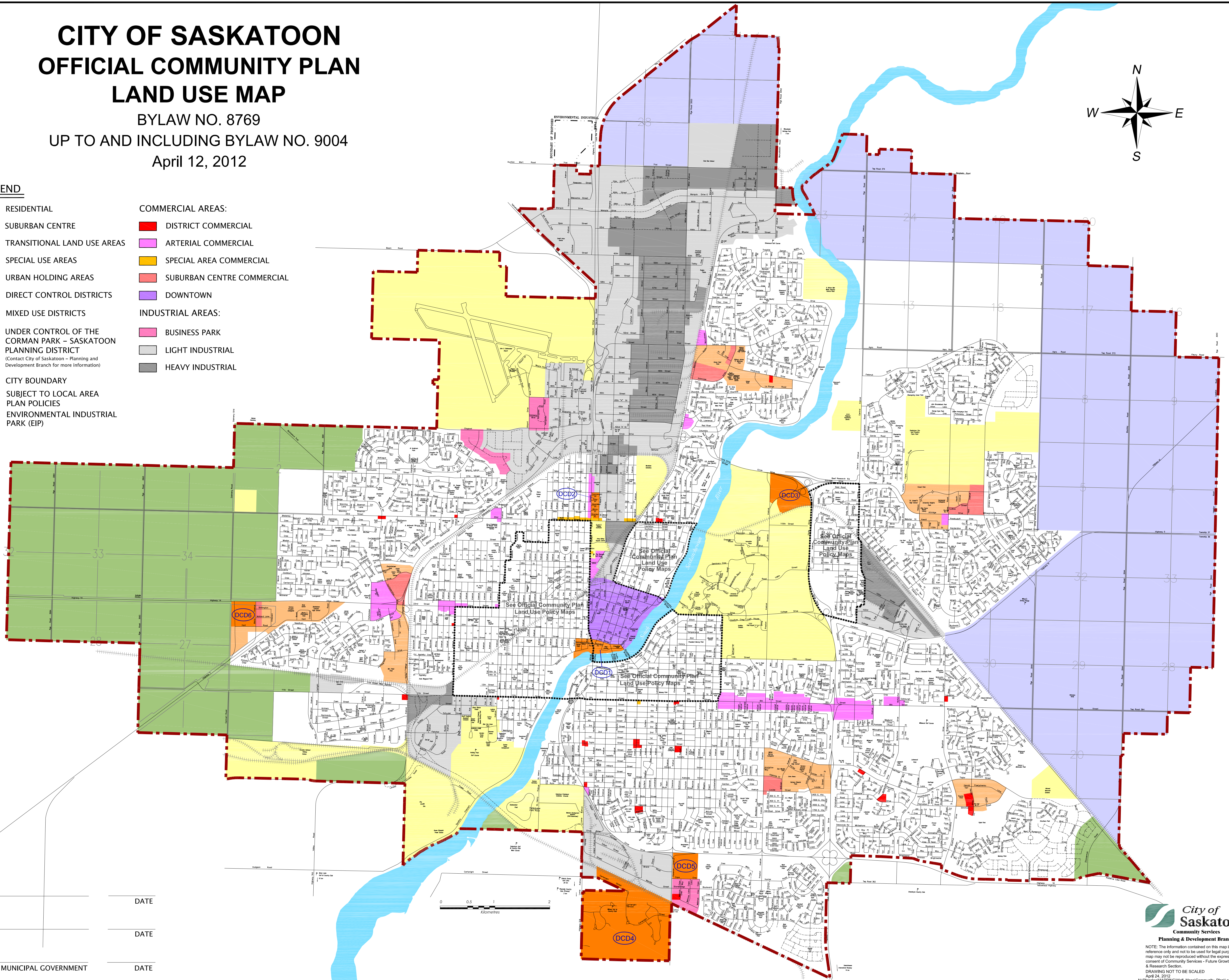
UP TO AND INCLUDING BYLAW NO. 9004

April 12, 2012



## LEGEND

- |   |                            |
|---|----------------------------|
| RESIDENTIAL   | <b>COMMERCIAL AREAS:</b>   |
| SUBURBAN CENTRE   | DISTRICT COMMERCIAL        |
| TRANSITIONAL LAND USE AREAS   | ARTERIAL COMMERCIAL        |
| SPECIAL USE AREAS   | SPECIAL AREA COMMERCIAL    |
| URBAN HOLDING AREAS   | SUBURBAN CENTRE COMMERCIAL |
| DIRECT CONTROL DISTRICTS  | DOWNTOWN                   |
| MIXED USE DISTRICTS   | <b>INDUSTRIAL AREAS:</b>   |
| UNDER CONTROL OF THE CORMAN PARK – SASKATOON PLANNING DISTRICT<br><small>(Contact City of Saskatoon – Planning and Development Branch for more information)</small> | BUSINESS PARK              |
| CITY BOUNDARY   | LIGHT INDUSTRIAL           |
| SUBJECT TO LOCAL AREA PLAN POLICIES   | HEAVY INDUSTRIAL           |
| ENVIRONMENTAL INDUSTRIAL PARK (EIP)   |                            |



MAYOR	DATE
CITY CLERK	DATE
MINISTER OF MUNICIPAL GOVERNMENT	DATE

