

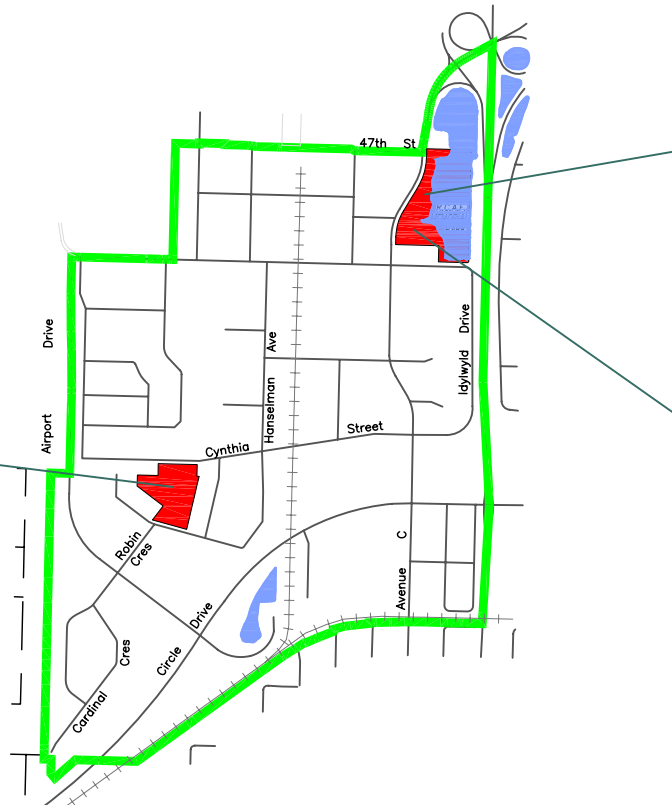
# AIRPORT BUSINESS AREA



BASIC INFORMATION		SPORTING FACILITIES						SEASONAL ACTIVITIES				PLAY			FITNESS		AMENITIES		
		BALL DIAMONDS	BASKETBALL	SKATEBOARD	SOCCER	TENNIS	VOLLEYBALL	POOLS		RINKS		PLAYGROUND	HORSESHOES	TOBOGGAN HILL	RUNNING TRACK	WALKING PATHS			SKI TRAILS
PARK NAME	ADDRESS							SPRAY	SWIMMING	INDOOR	OUTDOOR							ADDITIONAL	SPECIAL FEATURES
Larkhaven Park	211 Robin Crescent																		
R.C.A.F. Memorial Park	2502 Avenue C North																	Benches, Picnic Sites	Stormwater Lake, Monument



Larkhaven Park



R.C.A.F. Memorial Park



1. Groups wishing to use Sporting Facilities must advance book the location(s) required through City of Saskatoon, Leisure Service Branch, by calling 975-3366.
2. When booking any sports field, you will need to have the specific field number for the specific park requested. (i.e. Adelaide Park - ball diamond #16) Maps with field numbers are available by visiting [http://www.saskatoon.ca/org/parks/park\\_locations/index.asp](http://www.saskatoon.ca/org/parks/park_locations/index.asp) and clicking on the park that you are interested in.
3. For information on park amenities or maintenance, please call 975-3300.