

STEEL BOLLARDS

1 General

1.1 RELATED WORK

.1 Coordinate the requirements of this section with all other sections, including but not limited to:

.1 Section 02523 Concrete

1.2 QUALITY CONTROL

.1 **City of Saskatoon, Parks Branch** to approve steel bollards.

.1 All steel bollards not supplied by the City of Saskatoon are subject to review and written approval.

1.3 INSPECTIONS

.1 Notify **Consultant** for inspection of:

.1 Layout of steel bollards, before excavation of footings.

.2 Installation of specified type of steel bollard.

2 Products

2.1 STEEL BOLLARDS

.1 Steel Bollards: New, primer coated, c/w lock and key (if applicable), as manufactured by Luna Metal Works or approved equivalent including:

.1 Permanent bollard,

.2 Swing Gate bollards (2).

.2 Locks provided by **City of Saskatoon, Parks Branch**:

2.2 OTHER MATERIALS

.1 Reflective Tape: yellow, as supplied by:

.1 City of Saskatoon, Sign and Paint Shop
26th Street and Ontario Avenue
Saskatoon, Saskatchewan.

.2 Paint: see details.

STEEL BOLLARDS

3 Execution

3.1 LAYOUT

- .1 Establish and maintain line and grade controls using appropriate survey personnel and equipment.
 - .1 Contractor is responsible for layout accuracy.
 - .2 Layout to be approved before excavation of footings.

3.2 PREPARATION

- .1 Apply flat enamel paint to exposed surfaces of steel bollards as indicated.

3.3 EXCAVATION

- .1 Excavate to depths required for installation and concrete Work per details.
 - .1 Remove all loose material in excavations and compact with equipment.

3.4 INSTALLATION

- .1 Install steel bollards.
 - .1 Co-ordinate Work of different trades to ensure steel bollards are accurately positioned, plumb, level and securely fastened.
 - .2 Ensure adjacent finish grade surface treatment is not disturbed or damaged by installation of steel bollards.
 - .1 Repair all damaged steel bollards and finish grade treatments.

3.5 FINISH WORK

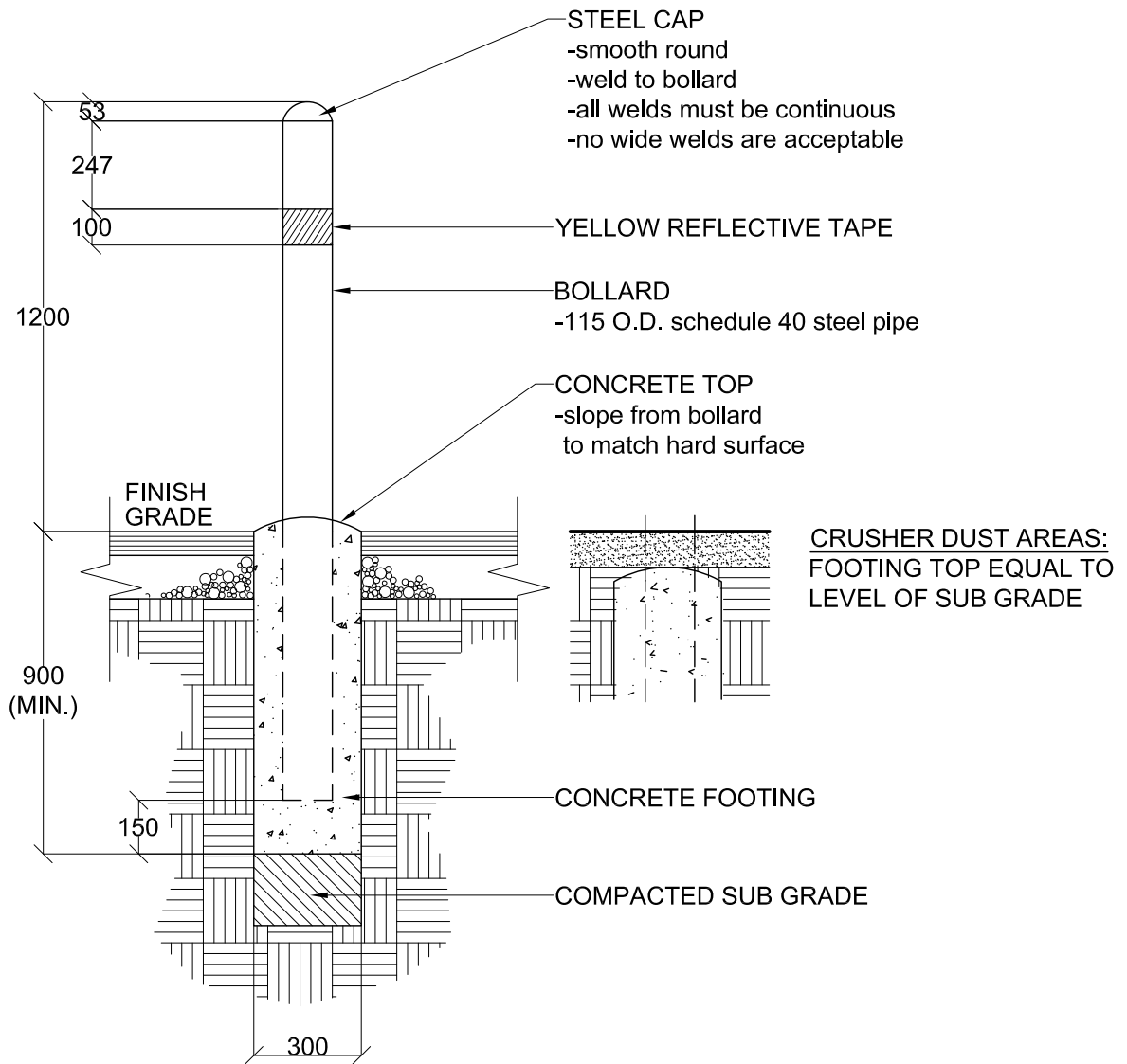
- .1 Repair damaged prime coat surfaces before finish coat and reflective tape Work.
 - .1 Clean damaged surfaces with wire brush removing loose and cracked coatings.
- .2 Install lock and key (if applicable).

3.6 CLEAN UP

- .1 Clean adjacent walks, road and other surfaces at the end of each working day.

END OF SECTION

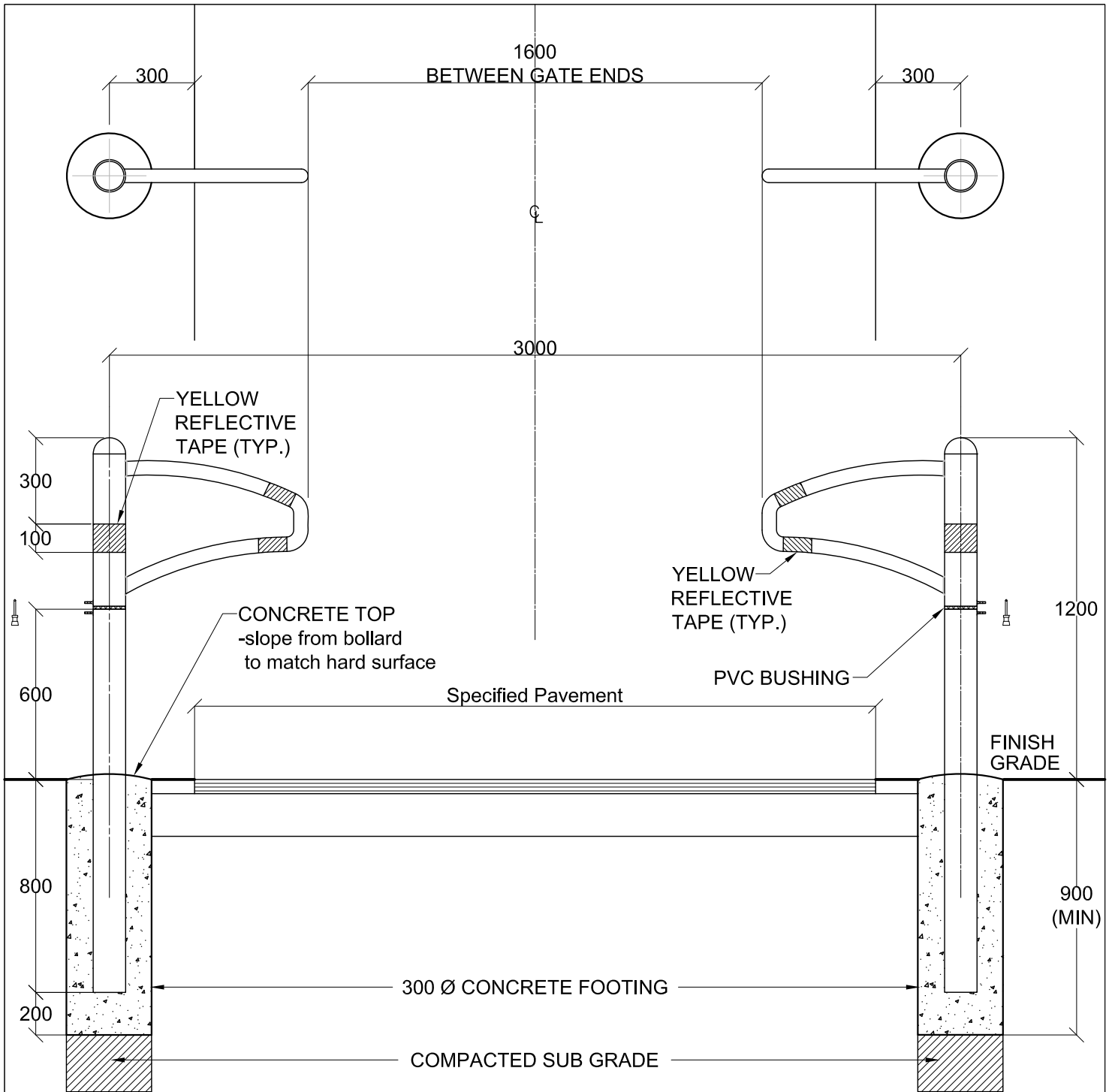
H:\Data\Design\PROJECTS\4209 Landscape\2-Master Specs\Drawings\2012 Standard Details & Specs\Drawings\2012 drawings\2012-02842-01 Steel Bollard - Permanent.dwg



NOTE:

1. All units are in millimeters U.N.O.
2. Manufacturer to apply the following finishes to product:
 - 0.3 min. marine primer
 - 0.75 min. salt resistant Powder Coating
 - color to match site furniture frames
3. Contractor to supply and install reflective tape

H:\Data\Design\PROJECTS\4209 Landscape\2-Master Specs\2012 Standard Details & Specs\Drawings\2012 drawings\2012-02842-02 Steel Bollard - Swing Gate.dwg



NOTE:

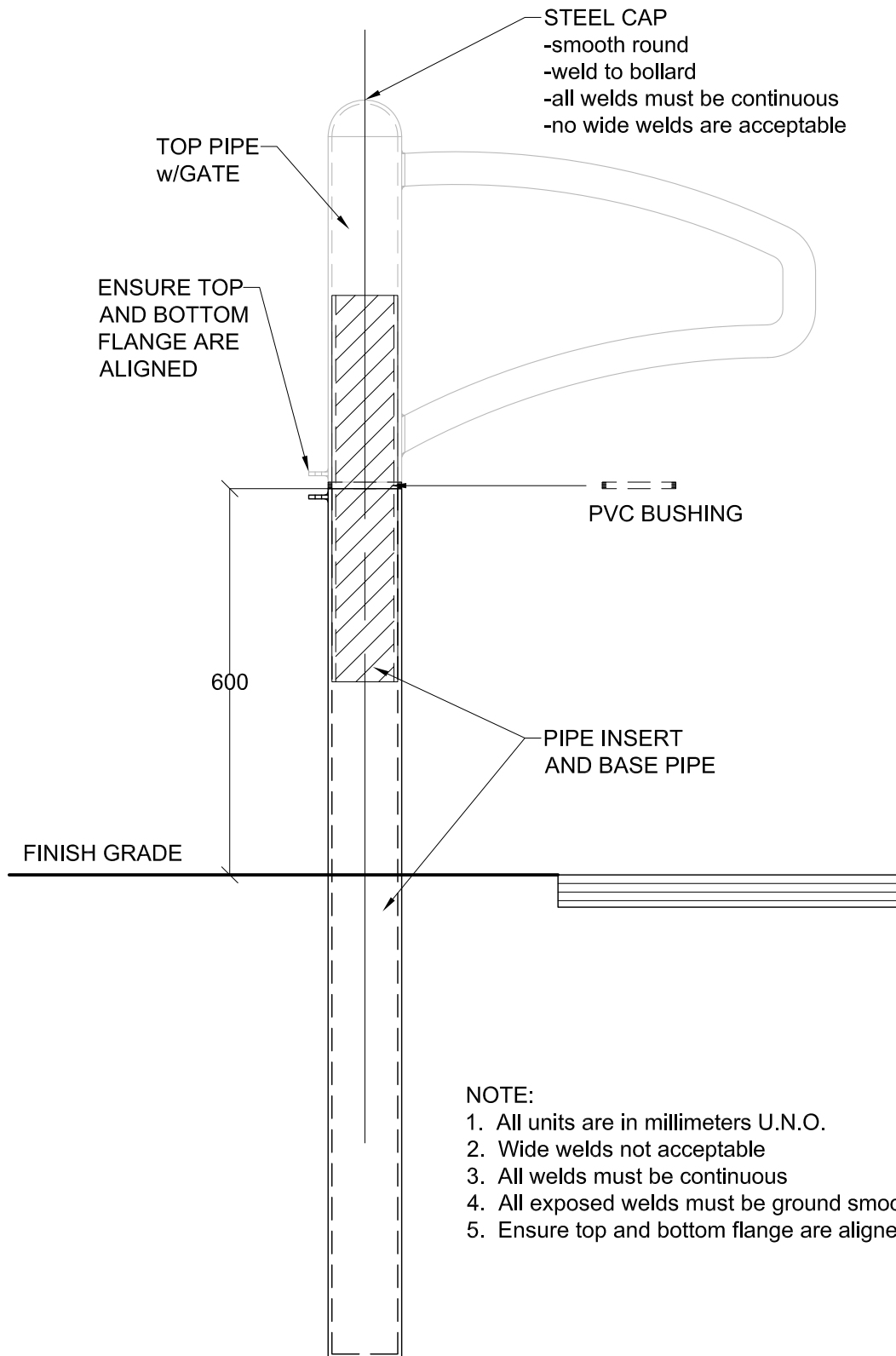
1. All units are in millimeters U.N.O.
2. Manufacturer to apply the following finishes to product:
 - 0.3 min. marine primer
 - 0.75 min. salt resistant Powder Coating
 - color to match site furniture frames
3. Contractor to supply and install reflective tape
4. City of Saskatoon to supply:
 - lock and key



Drawing Title
Steel Bollard - Swing Gate
 Drawn: HMK Checked: AO Date Y/M/D 09/11/23 Scale: 1:20

Drawing No.
02842-02a
 2012 Standard Detail

H:\Data\Design\PROJECTS\4209 Landscape\2-Master Specs\Drawings\2012 drawings\2012 Standard Details & Specs\Drawings\2012-02842-02 Steel Bollard - Swing Gate.dwg



**City of
Saskatoon**
Parks Branch

Drawing Title

Steel Bollard - Swing Gate

Drawn: HMK Checked: Swing Gate/Detail/11/23

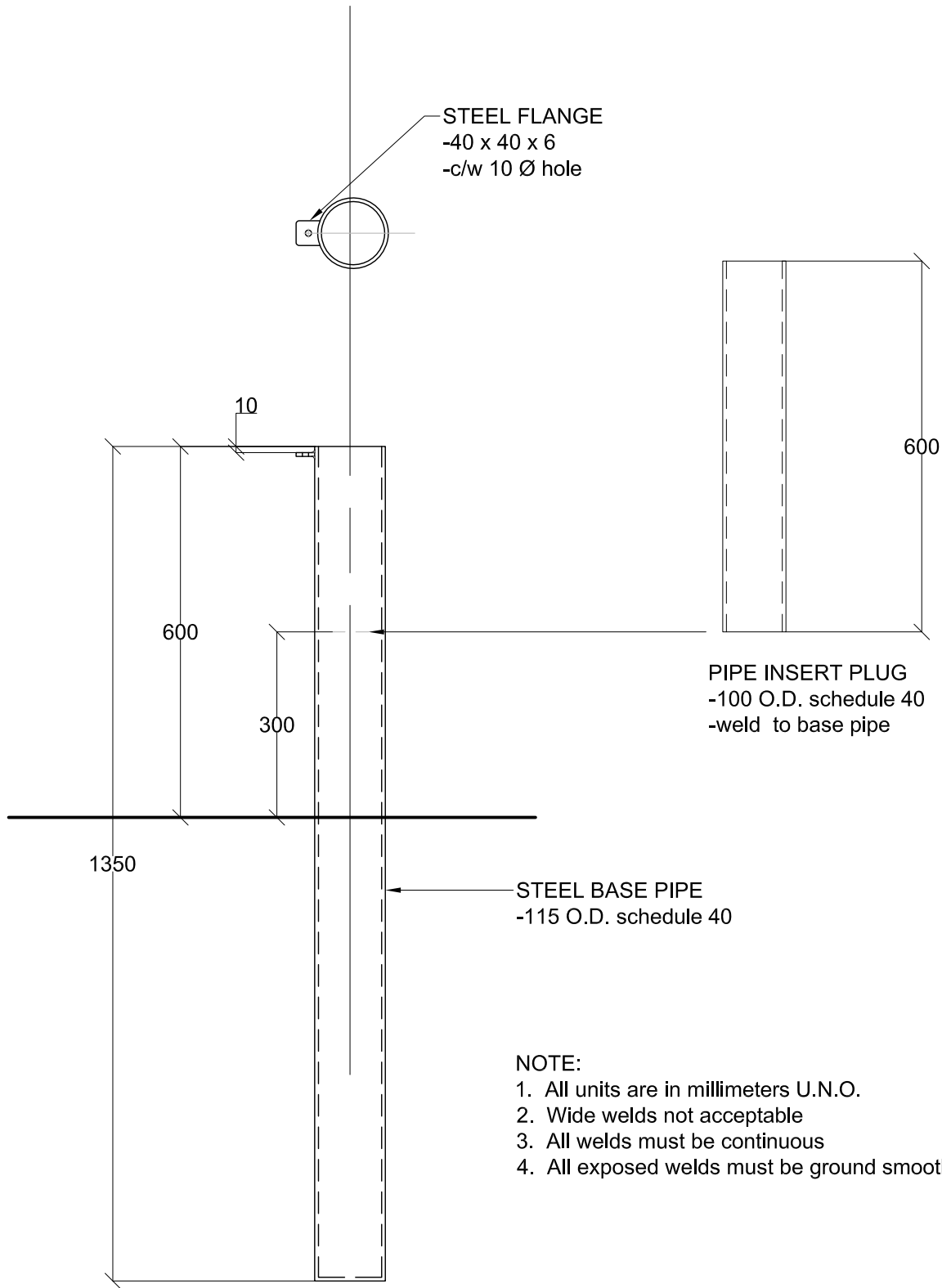
Scale: 1:10

Drawing No.

02842-02b

2012 Standard Detail

H:\Data\Design\PROJECTS\4209 Landscape\2-Master Specs\Drawings\2012 Standard Details & Specs\Drawings\2012 drawings\2012-02842-02 Steel Bollard - Swing Gate.dwg



NOTE:

1. All units are in millimeters U.N.O.
2. Wide welds not acceptable
3. All welds must be continuous
4. All exposed welds must be ground smooth



**City of
Saskatoon**
Parks Branch

Drawing Title

Steel Bollard - Swing Gate
Base Pipe and Insert

Drawn: HMK

Checked: AO

Date Y/M/D 09/11/23

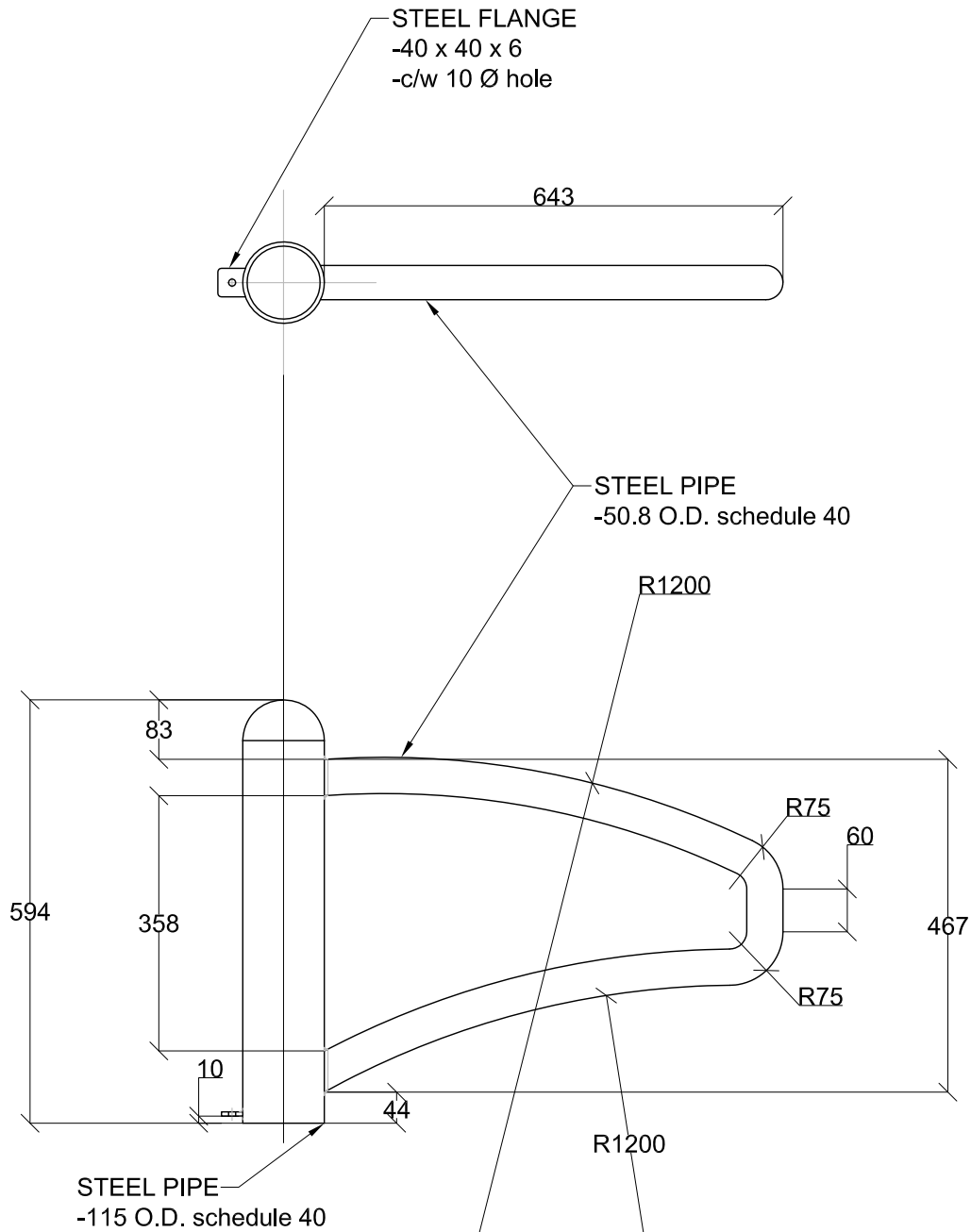
Scale: 1:10

Drawing No.

02842-02c

2012 Standard Detail

H:\Data\Design\PROJECTS\4209 Landscape\2-Master Specs\Drawings\2012 Standard Details & Specs\Drawings\2012 drawings\2012-02842-02 Steel Bollard - Swing Gate.dwg



NOTE:

1. All units are in millimeters U.N.O.
2. Wide welds not acceptable
3. All welds must be continuous
4. All exposed welds must be ground smooth



**City of
Saskatoon**
Parks Branch

Drawing Title

Steel Bollard - Swing Gate
Top Pipe w/Gate

Drawn: HMK

Checked: AO

Date Y/M/D 09/11/23

Scale: 1:10

Drawing No.

02842-02d

2012 Standard Detail

(This page left intentionally blank)