

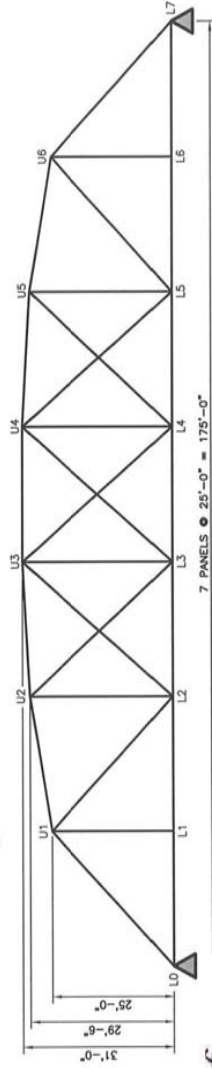
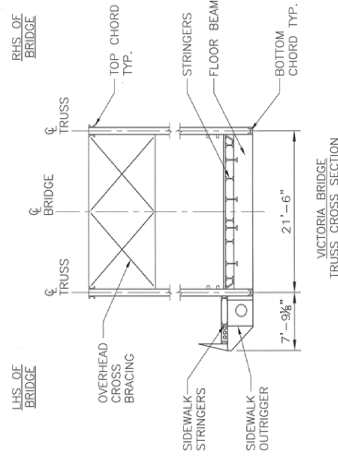
Span 5



Stantec



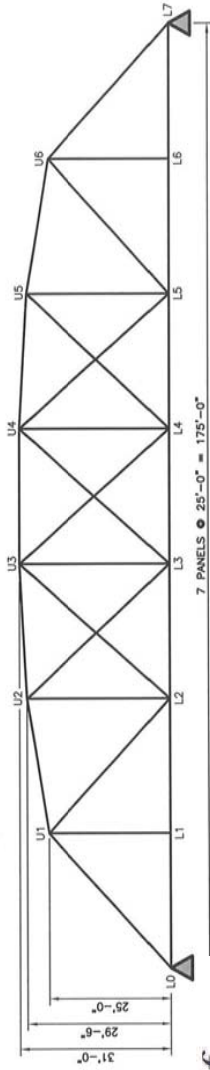
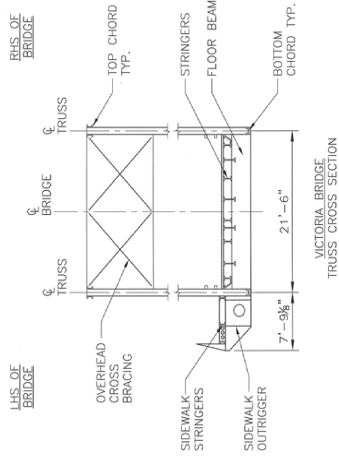
Traffic Bridge  
Span #5 175'-0" Truss



Member	Designation	Fracture Critical	Defects	Performance Deficiency	Photo's
LO - U1	RHS UPPER CHORD	Yes	Minor permanent deformations. Localized medium corrosion with light corrosion throughout.	0	
LO - U1	LHS UPPER CHORD	Yes	Minimal localized medium to severe corrosion with light corrosion throughout.	0	
LO - L1	RHS LOWER CHORD	Yes	Localized medium to severe corrosion with perforations near L1 and light corrosion throughout.	1	1
LO - L1	LHS LOWER CHORD	Yes	Localized medium to severe corrosion with perforations and light corrosion throughout. Up to 20% section loss.	1	
L1 - U1	RHS VERTICAL	Yes	Localized medium to severe corrosion with light corrosion throughout.	1	
L1 - U1	LHS VERTICAL	Yes	New plates bolted to flange of angle, which nearly has complete section loss. Plates have localized medium corrosion with light corrosion throughout and original angle has localized medium to severe corrosion with light corrosion throughout.	1	2, 3
L0	RHS CONNECTION	Yes	Localized medium to severe corrosion on heads of rivets. Gusset plate has localized medium to severe corrosion and light corrosion throughout.	0	
L0	LHS CONNECTION	Yes	Localized medium to severe corrosion with light corrosion throughout.	0	
L1	RHS CONNECTION	Yes	Localized medium to severe corrosion with significant loss of section on heads of rivets. Extensive pack rust surrounding clip angles. Pack rust has resulted in the misalignment of the angle. Gusset plate has localized medium to severe corrosion and light corrosion throughout. All pack rust was not removed from connection.	1	
L1	LHS CONNECTION	Yes	Localized medium to severe corrosion with significant loss of section on heads of rivets. Extensive pack rust surrounding clip angles. Pack rust has resulted in the misalignment of the angle. Gusset plate has localized medium to severe corrosion and light corrosion throughout. All pack rust was not removed from connection.	1	
U1	RHS CONNECTION	Yes	Localized medium corrosion with light corrosion throughout.	0	
U1	LHS CONNECTION	Yes	Localized medium corrosion with light corrosion throughout.	0	
L1	SIDEWALK OUTRIGGER	Yes	Localized medium corrosion with light corrosion throughout.	0	
L1	BELOW DECK FLOOR BEAM	Yes	Localized medium corrosion with light corrosion throughout on top and bottom flange.	1	
LO - L1	BELOW SIDEWALK STRINGER #1	No	Light to medium corrosion throughout with localized severe corrosion on top flange.	0	
LO - L1	BELOW SIDEWALK STRINGER #2	No	Light to medium corrosion throughout with localized severe corrosion on top flange.	0	
LO - L1	BELOW SIDEWALK STRINGER #3	No	Light to medium corrosion throughout with extensive perforations and light corrosion throughout. Approximately 50% of the original section remains, therefore elements ability to withstand design loads is greatly in question.	1	
LO - L1	BELOW DECK STRINGER #1	No	Localized medium corrosion with light corrosion throughout.	0	
LO - L1	BELOW DECK STRINGER #2	No	Localized medium corrosion with light corrosion throughout.	0	
LO - L1	BELOW DECK STRINGER #3	No	Localized medium corrosion with light corrosion throughout.	0	
LO - L1	BELOW DECK STRINGER #4	No	Localized medium corrosion with light corrosion throughout.	0	
LO - L1	BELOW DECK STRINGER #5	No	Localized medium corrosion with light corrosion throughout.	0	
LO - L1	BELOW DECK STRINGER #6	No	Localized medium corrosion with light corrosion throughout.	0	
LO - L1	BELOW DECK STRINGER #7	No	Localized medium corrosion with light corrosion throughout.	0	



Stantec



Traffic Bridge  
Span #5 175'-0" Truss

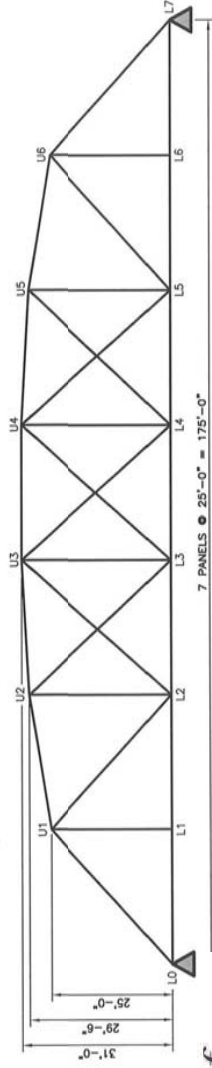
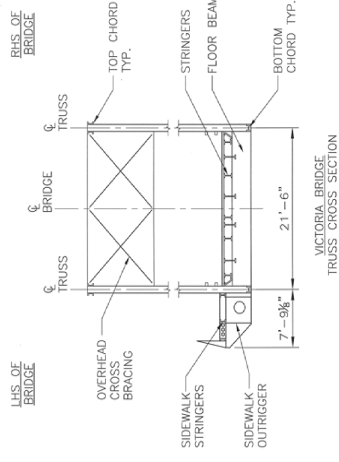
Member	Designation	Fracture Critical	Defects	Performance Deficiency	Photo's
L0 - L1	BELOW DECK STRINGER #8	No	Top flange has localized light to severe corrosion with light corrosion throughout.	0	
L0 - L1	BELOW DECK STRINGER #9	No	Localized medium to severe corrosion on top and bottom flange with light corrosion throughout.	0	
L0 - L1	BELOW DECK CROSS BRACING	No	Light to severe corrosion with perforations on gusset plates and light corrosion throughout.	1	4
U1	PORTAL BRACING	No	Light corrosion throughout. Appears to be functioning as intended.	0	



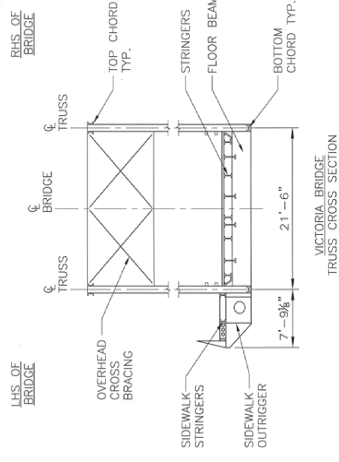
Stantec



Traffic Bridge  
Span #5 175'-0" Truss



Member	Designation	Fracture Critical	Defects	Performance Deficiency	Photo's
U1 - U2	RHS UPPER CHORD	Yes	Localized medium corrosion with light corrosion throughout.	0	
U1 - U2	LHS UPPER CHORD	Yes	Localized medium corrosion with light corrosion throughout.	0	
L1 - L2	RHS LOWER CHORD	Yes	Localized medium to severe corrosion with perforations at L2. All pack rust was not removed from member.	1	5, 6
L1 - L2	LHS LOWER CHORD	Yes	Localized medium to severe corrosion with light corrosion throughout.	1	
L2 - U2	RHS VERTICAL	Yes	Member is misaligned due to rust jacking between outer channel and outer gusset plate at lower connection. Localized medium to severe corrosion with light corrosion throughout.	1	
L2 - U2	LHS VERTICAL	Yes	Minor permanent deformations. Localized medium to severe corrosion with perforations on inner channel web. Approximately 60% of the original section remains, therefore elements ability to withstand design loads is greatly in question.	1	
U1 - L2	RHS DIAGONAL	Yes	Localized medium to severe corrosion with light corrosion throughout.	1	
U1 - L2	LHS DIAGONAL	Yes	Localized medium to severe corrosion with light corrosion throughout. Member is misaligned potentially due to overstressing.	1	
L2	RHS CONNECTION	Yes	Localized medium to severe corrosion with significant loss of section on heads of rivets. Extensive pack rust surrounding clip angles. Pack rust has resulted in the misalignment of the angle. Gusset plate has localized medium to severe corrosion and light corrosion throughout. All pack rust was not removed from connection.	1	
L2	LHS CONNECTION	Yes	Localized medium to severe corrosion with significant loss of section on heads of rivets. Extensive pack rust surrounding clip angles. Pack rust has resulted in the misalignment of the angle. Gusset plate has localized medium to severe corrosion and light corrosion throughout. All pack rust was not removed from connection.	1	
U2	RHS CONNECTION	Yes	Localized medium corrosion with light corrosion throughout.	0	
U2	LHS CONNECTION	Yes	Localized medium corrosion with light corrosion throughout.	0	
L2	SIDEWALK OUTRIGGER	Yes	Localized medium to severe corrosion with perforations on bottom flange.	1	
L2	BELOW DECK FLOOR BEAM	Yes	Localized medium to severe corrosion with light corrosion throughout.	1	
L1 - L2	BELOW SIDEWALK STRINGER #1	No	Light to medium corrosion throughout with localized severe corrosion on top flange.	0	
L1 - L2	BELOW SIDEWALK STRINGER #2	No	Light to medium corrosion throughout with localized severe corrosion on top flange.	0	
L1 - L2	BELOW SIDEWALK STRINGER #3	No	Light to medium corrosion throughout with localized severe corrosion on top flange.	0	
L1 - L2	BELOW DECK STRINGER #1	No	Localized medium corrosion with light corrosion throughout.	0	
L1 - L2	BELOW DECK STRINGER #2	No	Localized medium corrosion with light corrosion throughout.	0	
L1 - L2	BELOW DECK STRINGER #3	No	Localized medium corrosion with light corrosion throughout.	0	
L1 - L2	BELOW DECK STRINGER #4	No	Localized medium corrosion with light corrosion throughout.	0	
L1 - L2	BELOW DECK STRINGER #5	No	Localized medium corrosion with light corrosion throughout.	0	
L1 - L2	BELOW DECK STRINGER #6	No	Localized medium corrosion with light corrosion throughout.	0	
L1 - L2	BELOW DECK STRINGER #7	No	Localized medium corrosion with light corrosion throughout.	0	



Traffic Bridge  
Span #5 175'-0" Truss

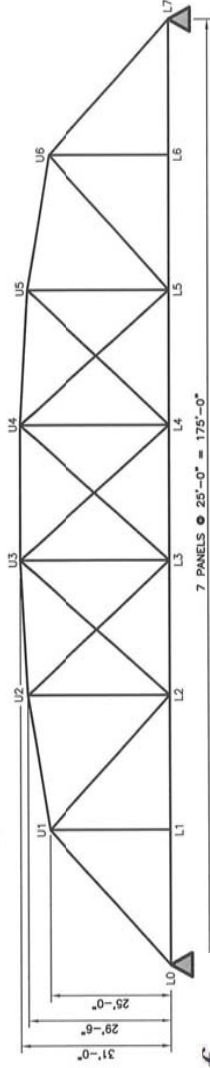
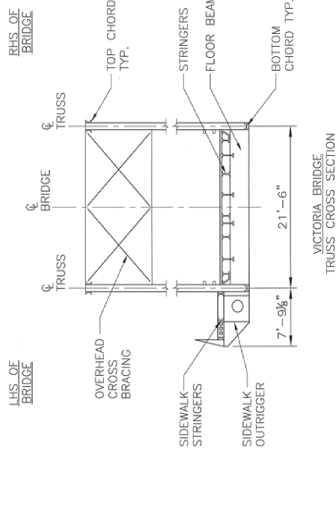
Member	Designation	Fracture Critical	Defects	Performance Deficiency	Photo's
L1 - L2	BELOW DECK STRINGER #8	No	Areas of localized medium to severe corrosion at top flange with light corrosion throughout.	0	
L1 - L2	BELOW DECK STRINGER #9	No	Top flange has localized medium to severe corrosion with light corrosion throughout.	0	
L1 - L2	BELOW DECK CROSS BRACING	No	Localized medium to severe corrosion with perforations on gusset plates.	1	7, 8
U1 - U2	TOP CHORD CROSS BRACING	No	Light corrosion throughout. Appears to be functioning as intended.	0	
U2	OVERHEAD CROSS BRACING	No	Minor permanent deformation. Light corrosion throughout. Appears to be functioning as intended.	0	



Stantec



Traffic Bridge  
Span #5 175'-0" Truss



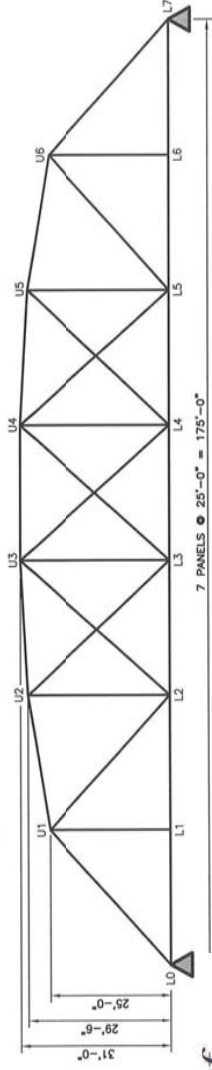
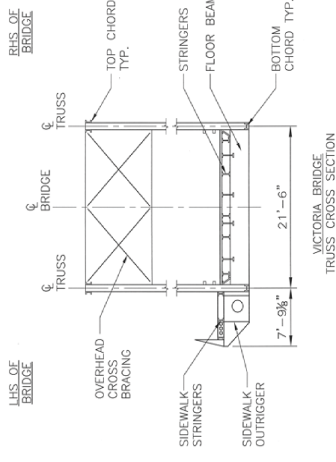
Member	Designation	Fracture Critical	Defects	Performance Deficiency	Photo's
U2 - U3	RHS UPPER CHORD	Yes	Localized medium corrosion with light corrosion throughout.	0	
U2 - U3	LHS UPPER CHORD	Yes	Localized medium corrosion with light corrosion throughout.	0	
L2 - L3	RHS LOWER CHORD	Yes	Localized medium to severe corrosion with perforations and light corrosion throughout. All pack rust was not removed from member.	1	9
L2 - L3	LHS LOWER CHORD	Yes	Localized medium to severe corrosion with light corrosion throughout. All pack rust was not removed from member. Up to 30% section loss.	1	
L3 - U3	RHS VERTICAL	Yes	Minor permanent deformations. Member is misaligned due to rust jacking between outer channel and outer gusset plate at lower connection. Localized medium to severe corrosion with perforations and light corrosion throughout.	1	
L3 - U3	LHS VERTICAL	Yes	Localized medium to severe corrosion with perforations on inside face channel web and flange. Approximately 60% of the original section remains, therefore elements ability to withstand design loads is greatly in question.	1	
U2 - L3	RHS DIAGONAL	Yes	Bottom portion of member has been replaced. Localized medium corrosion with light corrosion throughout.	0	
U2 - L3	LHS DIAGONAL	Yes	Localized medium to severe corrosion with perforations at wearing surface elevation. Member is misaligned potentially due to overstressing and twisting due to rust jacking between stitch plates and angles.	1	
L2 - U3	RHS DIAGONAL	Yes	Member is highly vibratory under live loads, member is misaligned. Localized medium to severe corrosion with light corrosion throughout.	1 & 2	
L2 - U3	LHS DIAGONAL	Yes	Bottom portion of member has been replaced. Localized medium corrosion with light corrosion throughout. Member is misaligned.	0	
L3	RHS CONNECTION	Yes	Localized medium to severe corrosion with significant loss of section on heads of rivets. Extensive pack rust surrounding clip angles. All pack rust was not removed from connection.	1	
L3	LHS CONNECTION	Yes	Localized medium to severe corrosion with significant loss of section on heads of rivets. Extensive pack rust surrounding clip angles. Pack rust has resulted in the misalignment of the angle. Gusset plate has localized medium to severe corrosion and light corrosion throughout. All pack rust was not removed from connection.	1	
U3	RHS CONNECTION	Yes	Localized medium corrosion with light corrosion throughout.	0	
U3	LHS CONNECTION	Yes	Localized medium corrosion with light corrosion throughout.	0	
L3	SIDEWALK OUTRIGGER	No	Localized medium corrosion with light corrosion throughout.	0	
L3	BELOW DECK FLOOR BEAM	No	Localized medium to severe corrosion with light corrosion throughout.	0	
L2 - L3	BELOW SIDEWALK STRINGER #1	No	Light to medium corrosion throughout with localized severe corrosion on top flange.	0	
L2 - L3	BELOW SIDEWALK STRINGER #2	No	Light to medium corrosion throughout with localized severe corrosion on top flange.	0	
L2 - L3	BELOW SIDEWALK STRINGER #3	No	Light to medium corrosion throughout with localized severe corrosion on top flange.	0	
L2 - L3	BELOW DECK STRINGER #1	No	Localized medium corrosion with light corrosion throughout.	0	
L2 - L3	BELOW DECK STRINGER #2	No	Localized medium corrosion with light corrosion throughout.	0	
L2 - L3	BELOW DECK STRINGER #3	No	Localized medium corrosion with light corrosion throughout.	0	
L2 - L3	BELOW DECK STRINGER #4	No	Localized medium corrosion with light corrosion throughout.	0	
L2 - L3	BELOW DECK STRINGER #5	No	Localized medium corrosion with light corrosion throughout.	0	
L2 - L3	BELOW DECK STRINGER #6	No	Localized medium corrosion with light corrosion throughout.	0	
L2 - L3	BELOW DECK STRINGER #7	No	Localized medium corrosion with light corrosion throughout.	0	
L2 - L3	BELOW DECK STRINGER #8	No	Localized medium corrosion with light corrosion throughout.	0	
L2 - L3	BELOW DECK STRINGER #9	No	Top flange has localized medium to severe corrosion with light corrosion throughout.	0	



Stantec



City of Saskatoon

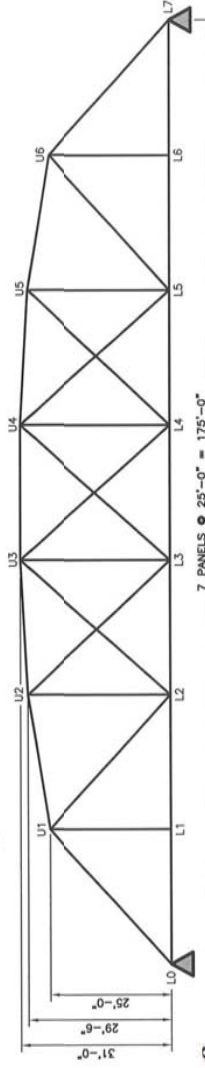
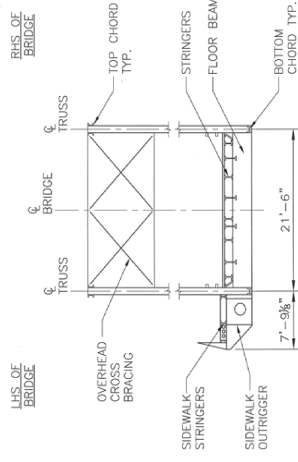


Traffic Bridge  
Span #5 175'-0" Truss

Member	Designation	Fracture Critical	Defects	Performance Deficiency	Photo's
L2 - L3	BELOW DECK CROSS BRACING	No	Both sides have localized medium to severe corrosion with perforations.	1	
U2 - U3	TOP CHORD CROSS BRACING	No	Permanent deformations in angles and light corrosion throughout.	0	
U3	OVERHEAD CROSS BRACING	No	Light corrosion throughout. Appears to be functioning as intended.	0	



Stantec



Traffic Bridge  
Span #5 175'-0" Truss

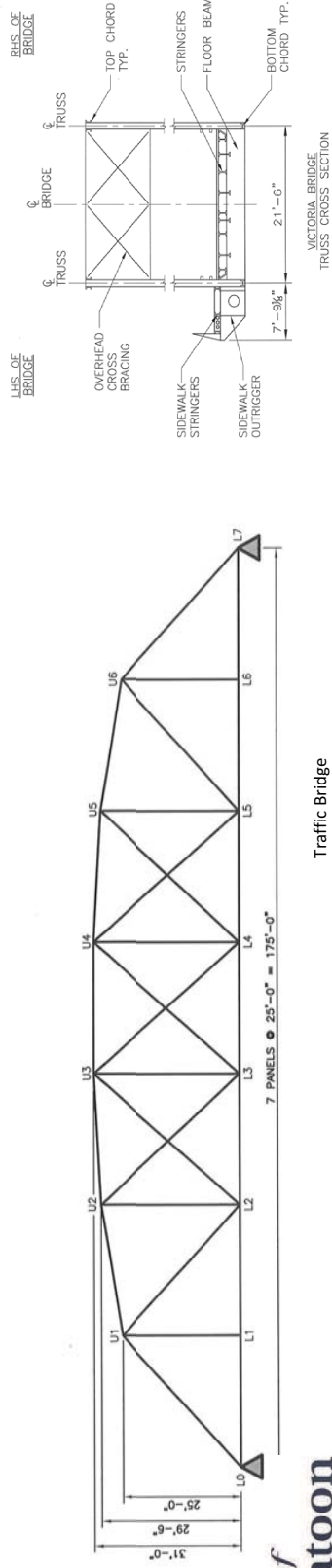
Member	Designation	Fracture Critical	Defects	Performance Deficiency	Photo's
U3 - U4	RHS UPPER CHORD	Yes	Localized medium corrosion with light corrosion throughout.	0	
U3 - U4	LHS UPPER CHORD	Yes	Localized medium corrosion with light corrosion throughout.	0	
L3 - L4	RHS LOWER CHORD	Yes	Localized medium to severe corrosion with light corrosion throughout. All pack rust was not removed from member.	1	
L3 - L4	LHS LOWER CHORD	Yes	Localized medium to severe corrosion with light corrosion throughout. All pack rust was not removed from member. Up to 20% section loss.	1	
L4 - U4	RHS VERTICAL	Yes	Member is misaligned due to rust jacking between outer channel and outer gusset plate at lower connection. Localized medium to severe corrosion with perforations on flange of inner channel.	1	
L4 - U4	LHS VERTICAL	Yes	Localized medium to severe corrosion with perforations and light corrosion throughout.	1	10
U3 - L4	RHS DIAGONAL	Yes	Localized medium to severe corrosion with perforations and light corrosion throughout.	1	
U3 - L4	LHS DIAGONAL	Yes	Bottom portion of member has been replaced. Localized medium corrosion with light corrosion throughout.	0	
L3 - U4	RHS DIAGONAL	Yes	Bottom portion of member has been replaced, and is misaligned. Localized medium corrosion with light corrosion throughout.	0	
L3 - U4	LHS DIAGONAL	Yes	Localized medium to severe corrosion with light corrosion throughout.	0	
L4	RHS CONNECTION	Yes	Localized medium to severe corrosion with significant loss of section on heads of rivets. Extensive pack rust surrounding clip angles. Pack rust has resulted in the misalignment of the angle. Gusset plate has localized medium to severe corrosion and light corrosion throughout. All pack rust was not removed from connection.	1	
L4	LHS CONNECTION	Yes	Localized medium to severe corrosion with significant loss of section on heads of rivets. Extensive pack rust surrounding clip angles. Pack rust has resulted in the misalignment of the angle. Gusset plate has localized medium to severe corrosion and light corrosion throughout. All pack rust was not removed from connection.	1	
U4	RHS CONNECTION	Yes	Localized medium corrosion with light corrosion throughout.	0	
U4	LHS CONNECTION	Yes	Localized medium corrosion with light corrosion throughout.	0	
L4	SIDEWALK OUTRIGGER	No	Localized medium to severe corrosion with light corrosion throughout.	0	
L4	BELOW DECK FLOOR BEAM	No	Localized medium to severe corrosion with light corrosion throughout.	0	
L2 - L3	BELOW SIDEWALK STRINGER #1	No	Light to medium corrosion throughout with localized severe corrosion on top flange.	0	
L2 - L3	BELOW SIDEWALK STRINGER #2	No	Light to medium corrosion throughout with localized severe corrosion on top flange.	0	
L2 - L3	BELOW SIDEWALK STRINGER #3	No	Light to medium corrosion throughout with localized severe corrosion on top flange.	0	
L3 - L4	BELOW DECK STRINGER #1	No	Localized medium corrosion with light corrosion throughout.	0	
L3 - L4	BELOW DECK STRINGER #2	No	Localized medium corrosion with light corrosion throughout.	0	
L3 - L4	BELOW DECK STRINGER #3	No	Localized medium corrosion with light corrosion throughout.	0	
L3 - L4	BELOW DECK STRINGER #4	No	Localized medium corrosion with light corrosion throughout.	0	
L3 - L4	BELOW DECK STRINGER #5	No	Localized medium corrosion with light corrosion throughout.	0	
L3 - L4	BELOW DECK STRINGER #6	No	Localized medium corrosion with light corrosion throughout.	0	



Stantec



City of Saskatoon



Traffic Bridge  
Span #5 175'-0" Truss

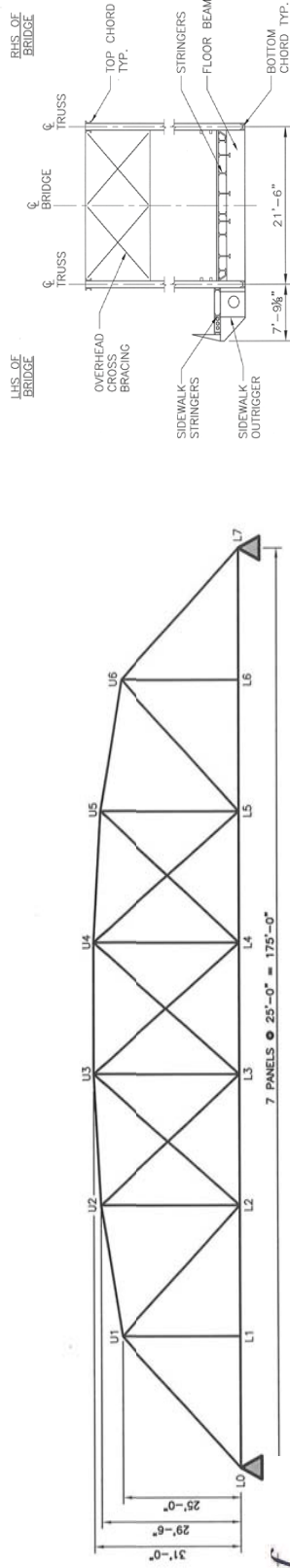
Member	Designation	Fracture Critical	Defects	Performance Deficiency	Photo's
L3 - L4	BELOW DECK STRINGER #7	No	Localized medium corrosion with light corrosion throughout.	0	
L3 - L4	BELOW DECK STRINGER #8	No	Top flange has localized medium to severe corrosion with light corrosion throughout.	0	
L3 - L4	BELOW DECK STRINGER #9	No	Top flange and bottom flange have localized medium to severe corrosion with light corrosion throughout.	0	
L3 - L4	BELOW DECK CROSS BRACING	No	Localized medium to severe corrosion with perforations on gusset plates.	1	
U3 - U4	TOP CHORD CROSS BRACING	No	Light corrosion throughout. Appears to be functioning as intended.	0	
U4	OVERHEAD CROSS BRACING	No	Light corrosion throughout. Appears to be functioning as intended.	0	



Stantec



Traffic Bridge  
Span #5 175'-0" Truss



VICTORIA BRIDGE  
TRUSS CROSS SECTION

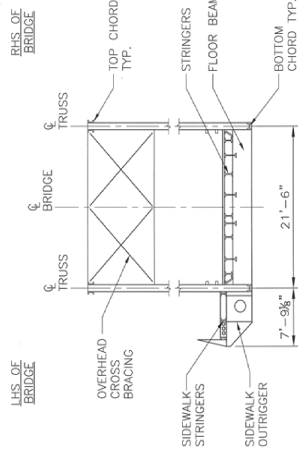
Member	Designation	Fracture Critical	Defects	Performance Deficiency	Photo's
U4 - U5	RHS UPPER CHORD	Yes	Localized medium corrosion with light corrosion throughout.	0	11
U4 - U5	LHS UPPER CHORD	Yes	Localized medium corrosion with light corrosion throughout.	0	
L4 - L5	RHS LOWER CHORD	Yes	Localized medium to severe corrosion with light corrosion throughout. All pack rust was not removed from member.	1	
L4 - L5	LHS LOWER CHORD	Yes	Localized medium to severe corrosion with light corrosion throughout. All pack rust was not removed from member.	1	
L5 - U5	RHS VERTICAL	Yes	Member is misaligned due to rust jacking between outer channel and outer gusset plate at lower connection. Localized medium to severe corrosion with light corrosion throughout.	1	
L5 - U5	LHS VERTICAL	Yes	Minor permanent deformations, and localized medium to severe corrosion with light corrosion throughout.	1	
U4 - L5	RHS DIAGONAL	Yes	Significant permanent deformation due to impact, with localized medium to severe corrosion with light corrosion throughout.	1 & 2	12
U4 - L5	LHS DIAGONAL	Yes	Minor permanent deformations, member is misaligned due to impact. Localized medium to severe corrosion with light corrosion throughout.	1	
L4 - U5	RHS DIAGONAL	Yes	Localized medium to severe corrosion with light corrosion throughout.	1	
L4 - U5	LHS DIAGONAL	Yes	Localized medium to severe corrosion on inside face angle at wearing surface elevation, with light corrosion throughout.	1	
L5	RHS CONNECTION	Yes	Localized medium to severe corrosion with significant loss of section on heads of rivets. Extensive pack rust surrounding clip angles. Pack rust has resulted in the misalignment of the angle. Gusset plate has localized medium to severe corrosion and light corrosion throughout. All pack rust was not removed from connection.	1	
L5	LHS CONNECTION	Yes	Localized medium to severe corrosion with significant loss of section on heads of rivets. Extensive pack rust surrounding clip angles. Pack rust has resulted in the misalignment of the angle. Gusset plate has localized medium to severe corrosion and light corrosion throughout. All pack rust was not removed from connection.	1	
U5	RHS CONNECTION	Yes	Localized medium corrosion with light corrosion throughout.	0	
U5	LHS CONNECTION	Yes	Localized medium corrosion with light corrosion throughout.	0	
L5	SIDEWALK OUTRIGGER	No	Localized medium to severe corrosion with light corrosion throughout.	1	
L5	BELOW DECK FLOOR BEAM	No	Top flange has localized medium to severe corrosion and light corrosion throughout.	1	
L2 - L3	BELOW SIDEWALK STRINGER #1	No	Light to medium corrosion throughout with localized severe corrosion on top flange.	0	
L2 - L3	BELOW SIDEWALK STRINGER #2	No	Light to medium corrosion throughout with localized severe corrosion on top flange.	0	
L2 - L3	BELOW SIDEWALK STRINGER #3	No	Light to medium corrosion throughout with localized severe corrosion on top flange.	0	
L4 - L5	BELOW DECK STRINGER #1	No	Localized medium corrosion with light corrosion throughout.	0	
L4 - L5	BELOW DECK STRINGER #2	No	Localized medium corrosion with light corrosion throughout.	0	
L4 - L5	BELOW DECK STRINGER #3	No	Localized medium corrosion with light corrosion throughout.	0	
L4 - L5	BELOW DECK STRINGER #4	No	Localized medium corrosion with light corrosion throughout.	0	
L4 - L5	BELOW DECK STRINGER #5	No	Localized medium corrosion with light corrosion throughout.	0	
L4 - L5	BELOW DECK STRINGER #6	No	Localized medium corrosion with light corrosion throughout.	0	



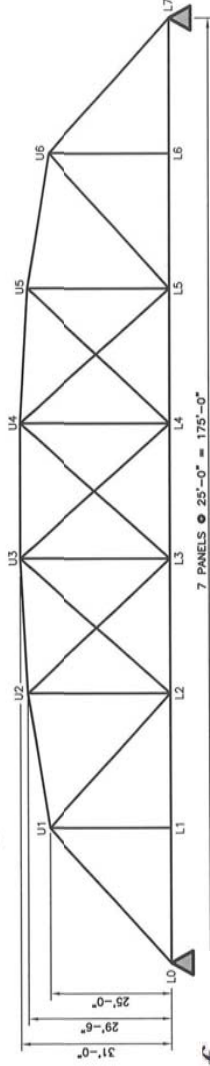
Stantec



City of Saskatoon



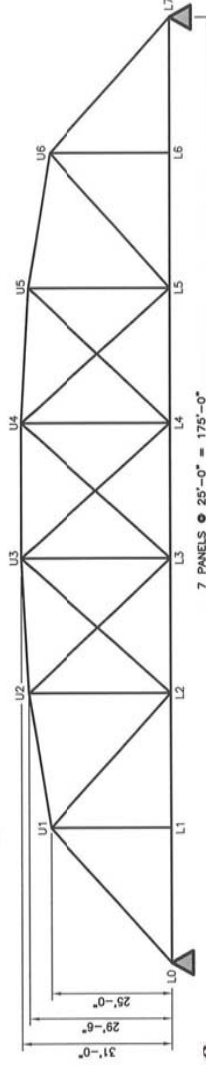
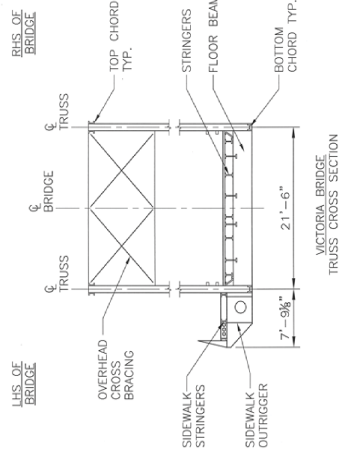
Traffic Bridge  
Span #5 175'-0" Truss



Member	Designation	Fracture Critical	Defects	Performance Deficiency	Photo's
L4 - L5	BELOW DECK STRINGER #7	No	Localized medium corrosion with light corrosion throughout.	0	
L4 - L5	BELOW DECK STRINGER #8	No	Areas of localized medium to severe corrosion at top flange with light corrosion throughout.	0	
L4 - L5	BELOW DECK STRINGER #9	No	Top and bottom flanges have localized medium to severe corrosion with light corrosion throughout.	0	
L4 - L5	BELOW DECK CROSS BRACING	No	Both sides have localized medium to severe corrosion with perforations.	1	
U4 - U5	TOP CHORD CROSS BRACING	No	Permanent deformations in angles and light corrosion throughout.	0	
U5	OVERHEAD CROSS BRACING	No	Light corrosion throughout. Appears to be functioning as intended.	0	



Stantec



Traffic Bridge  
Span #5 175'-0" Truss

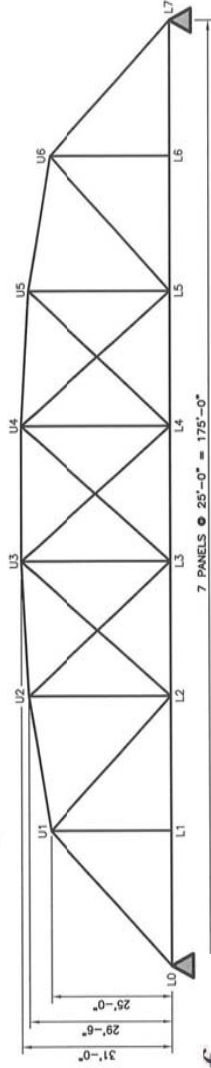
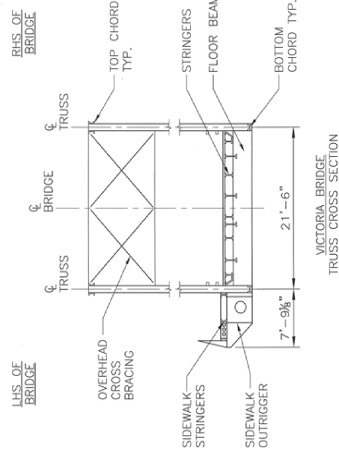
Member	Designation	Fracture Critical	Defects	Performance Deficiency	Photo's
U5 - U6	RHS UPPER CHORD	Yes	Localized medium corrosion with light corrosion throughout.	0	
U5 - U6	LHS UPPER CHORD	Yes	Localized medium corrosion with light corrosion throughout.	0	
L5 - L6	RHS LOWER CHORD	Yes	Localized medium to severe corrosion with light corrosion throughout. All pack rust was not removed from member.	1	
L5 - L6	LHS LOWER CHORD	Yes	Localized medium to severe corrosion with light corrosion throughout. All pack rust was not removed from member.	1	
L6 - U6	RHS VERTICAL	Yes	Minor permanent deformations, localized medium to severe corrosion with light corrosion throughout.	1	
L6 - U6	LHS VERTICAL	Yes	New switch plate at bottom, localized medium to severe corrosion with perforations on inside face of angles. Members are twisting due to rust jacking between stitch plates and angles. Approximately 60% of the original section remains, therefore elements ability to withstand design loads is greatly in question.	1	
L5 - U6	RHS DIAGONAL	Yes	Localized medium to severe corrosion on inside face angle, with light corrosion throughout.	1	
L5 - U6	LHS DIAGONAL	Yes	Localized medium to severe corrosion on inside face angle at wearing surface elevation with light corrosion throughout.	1	
L6	RHS CONNECTION	Yes	Localized medium to severe corrosion with significant loss of section on heads of rivets. Extensive pack rust surrounding clip angles. Pack rust has resulted in the misalignment of the angle. Gusset plate has localized medium to severe corrosion and light corrosion throughout. All pack rust was not removed from connection.	1	
L6	LHS CONNECTION	Yes	Localized medium to severe corrosion with significant loss of section on heads of rivets. Extensive pack rust surrounding clip angles. Pack rust has resulted in the misalignment of the angle. Gusset plate has localized medium to severe corrosion and light corrosion throughout. All pack rust was not removed from connection.	1	
U6	RHS CONNECTION	Yes	Localized medium corrosion with light corrosion throughout.	0	
U6	LHS CONNECTION	Yes	Localized medium corrosion with light corrosion throughout.	0	
L6	SIDEWALK OUTRIGGER	Yes	Localized medium corrosion with light corrosion throughout.	0	
L6	BELOW DECK FLOOR BEAM	Yes	Top flange has localized medium to severe corrosion with light corrosion throughout.	1	
L2 - L3	BELOW SIDEWALK STRINGER #1	No	Light to medium corrosion throughout with localized severe corrosion on top flange.	0	
L2 - L3	BELOW SIDEWALK STRINGER #2	No	Light to medium corrosion throughout with localized severe corrosion on top flange.	0	
L2 - L3	BELOW SIDEWALK STRINGER #3	No	Light to medium corrosion throughout with localized severe corrosion on top flange.	0	
L5 - L6	BELOW DECK STRINGER #1	No	Localized medium corrosion with light corrosion throughout.	0	
L5 - L6	BELOW DECK STRINGER #2	No	Localized medium corrosion with light corrosion throughout.	0	
L5 - L6	BELOW DECK STRINGER #3	No	Localized medium corrosion with light corrosion throughout.	0	
L5 - L6	BELOW DECK STRINGER #4	No	Localized medium corrosion with light corrosion throughout.	0	
L5 - L6	BELOW DECK STRINGER #5	No	Localized medium corrosion with light corrosion throughout.	0	
L5 - L6	BELOW DECK STRINGER #6	No	Localized medium corrosion with light corrosion throughout.	0	



Stantec



City of Saskatoon

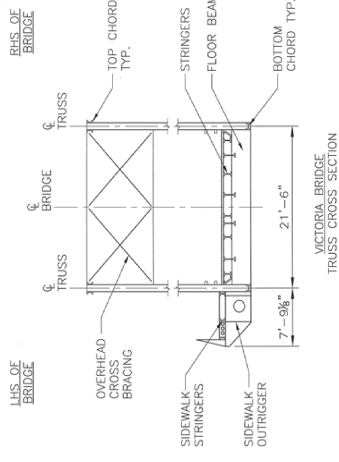


Traffic Bridge  
Span #5 175'-0" Truss

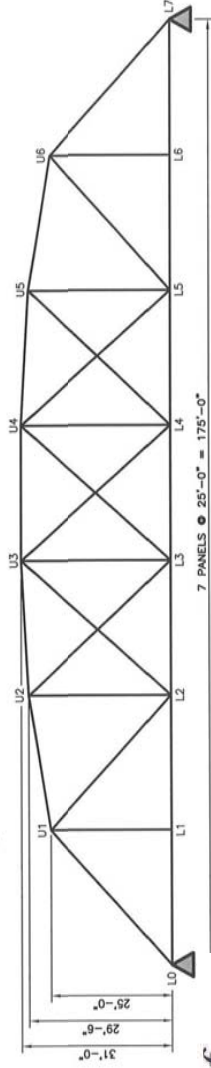
Member	Designation	Fracture Critical	Defects	Performance Deficiency	Photo's
L5 - L6	BELOW DECK STRINGER #7	No	Localized medium corrosion with light corrosion throughout.	0	
L5 - L6	BELOW DECK STRINGER #8	No	Localized medium corrosion with light corrosion throughout.	0	
L5 - L6	BELOW DECK STRINGER #9	No	Top flange has localized medium to severe corrosion with light corrosion throughout. Both top and bottom have localized medium to severe corrosion with perforations.	0	
L5 - L6	BELOW DECK CROSS BRACING	No	Light corrosion throughout. Appears to be functioning as intended.	1	
U5 - U6	TOP CHORD CROSS BRACING	No	Light corrosion throughout. Appears to be functioning as intended.	0	
U6	PORTAL BRACING	No	Light corrosion throughout. Appears to be functioning as intended.	0	



Stantec



Traffic Bridge  
Span #5 175'-0" Truss



Member	Designation	Fracture Critical	Defects	Performance Deficiency	Photo's
U6 - L7	RHS UPPER CHORD	Yes	Localized medium corrosion with light corrosion throughout.	0	
U6 - L7	LHS UPPER CHORD	Yes	Minor permanent deformations, localized medium to severe corrosion with light corrosion throughout.	0	13
L6 - L7	RHS LOWER CHORD	Yes	Localized medium to severe corrosion with light corrosion throughout. All pack rust was not removed from member.	1	
L6 - L7	LHS LOWER CHORD	Yes	Localized medium to severe corrosion with light corrosion throughout. All pack rust was not removed from member.	1	
L7	RHS CONNECTION	Yes	Localized medium corrosion with light corrosion throughout.	0	
L7	LHS CONNECTION	Yes	Localized medium corrosion with light corrosion throughout.	0	
L2 - L3	BELOW SIDEWALK STRINGER #1	No	Light to medium corrosion throughout with localized severe corrosion on top flange.	0	
L2 - L3	BELOW SIDEWALK STRINGER #2	No	Light to medium corrosion throughout with localized severe corrosion on top flange.	0	
L2 - L3	BELOW SIDEWALK STRINGER #3	No	Light to medium corrosion throughout with localized severe corrosion on top flange.	0	
L6 - L7	BELOW DECK STRINGER #1	Yes	Localized medium corrosion with light corrosion throughout.	0	
L6 - L7	BELOW DECK STRINGER #2	Yes	Localized medium corrosion with light corrosion throughout.	0	
L6 - L7	BELOW DECK STRINGER #3	Yes	Localized medium corrosion with light corrosion throughout.	0	
L6 - L7	BELOW DECK STRINGER #4	Yes	Localized medium corrosion with light corrosion throughout.	0	
L6 - L7	BELOW DECK STRINGER #5	Yes	Localized medium corrosion with light corrosion throughout.	0	
L6 - L7	BELOW DECK STRINGER #6	Yes	Localized medium corrosion with light corrosion throughout.	0	
L6 - L7	BELOW DECK STRINGER #7	Yes	Localized medium corrosion with light corrosion throughout.	0	
L6 - L7	BELOW DECK STRINGER #8	Yes	Top flange has areas of localized medium to severe corrosion with light corrosion throughout.	0	
L6 - L7	BELOW DECK STRINGER #9	No	Top flange has localized medium to severe corrosion with light corrosion throughout.	0	
L6 - L7	BELOW DECK CROSS BRACING	No	Both sides have localized medium to severe corrosion with perforations.	1	

## 2010 Traffic Bridge Inspection



Photo 1

Right Truss, Span 5, Panel Point 2, Lower Chord L0-L1 - Note light to severe corrosion with perforations at connection with Panel Point 2



Photo 2

Span 5, LHS, L1 - U1 - Note very severe corrosion with perforations and complete section loss. New plates have been bolted to original angles but original angles are very severely corroded

## 2010 Traffic Bridge Inspection



Photo 3

Span 5, LHS, L1 - U1 - Note very severe corrosion with perforations and complete section loss. New plates have been bolted to original angles but original angles are very severely corroded



Photo 4

Right Truss, Span 5, Panel Point 0, below deck cross bracing - Note light to severe corrosion with perforations 0 - 100% section loss

2010 Traffic Bridge Inspection



Photo 5

Right Truss, Span 5, Lower Chord L1-L2 - Note severe corrosion with six perforations near Panel Point 2 connection



Photo 6

Right Truss, Span 5, Lower Chord L1-L2 - Note severe corrosion with six perforations near Panel Point 2 connection

2010 Traffic Bridge Inspection



Photo 7

Right Truss, Span 5, Panel Point 2, below deck cross bracing - Note severe corrosion with perforations, 100% section loss



Photo 8

Right Truss, Span 5, Panel Point 2, below deck cross bracing - Note severe corrosion with perforations, 100% section loss

## 2010 Traffic Bridge Inspection



Photo 9

Right Truss, Span 5, Lower Chord L2-L3 - Note light to severe corrosion with perforations



Photo 10

Span 5, LHS, L4 - U4 - Note permanent deformation

2010 Traffic Bridge Inspection



Photo 11

Top chord lateral bracing in span 5 between U4 & U5 - Note permanent deformation



Photo 12

Span 5, RHS, U4 - L5 - Note permanent deformation and misalignment

2010 Traffic Bridge Inspection



Photo 13

Span 5, LHS, U6 - L7 - Note permanent deformation