

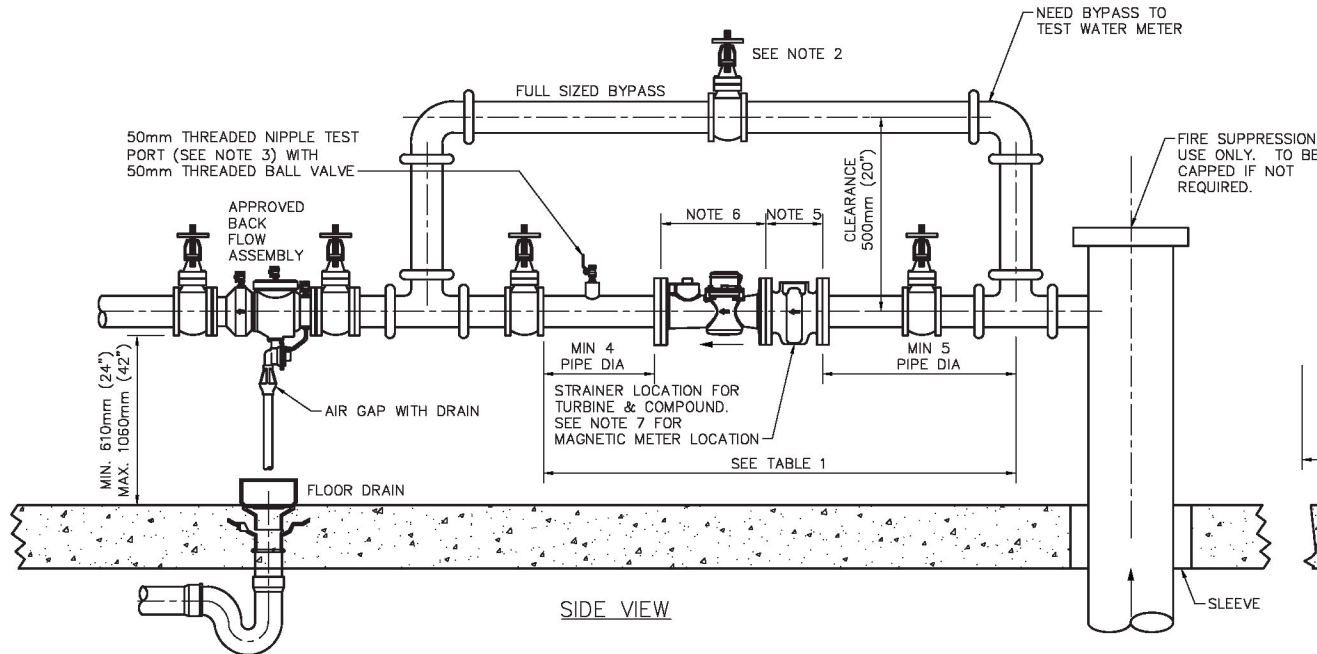
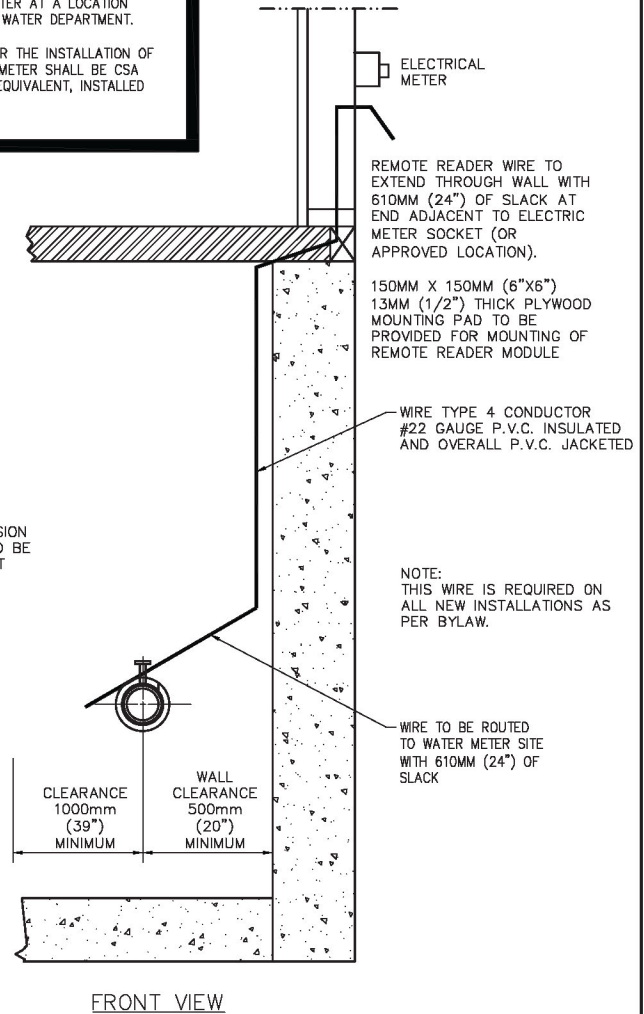
NOTES:

- CLEARANCE AROUND METER: 500mm (20") TO REAR, 500mm (20") TO SIDES, 1000mm (39") IN FRONT.
- VALVES: GATE OR BALL, BYPASS VALVE SHALL BE LOCKABLE.
- TEST PORT: FOR TURBINE METERS, COMPOUND AND MAGNETIC METERS.
- GASKETS: 3mm THICK.
- STRAINER LENGTH: 75mm-150mm, 100mm-187.5mm, 150mm-225mm.
- METER LENGTH
 - TURBINE: 75mm-300mm, 100mm-350mm, 150mm-450mm.
 - COMPOUND: 75mm-425mm, 100mm-500mm, 150mm-600mm.
 - AQUAMASTER MAGNETIC FLOWMETER: 75mm-200mm, 100mm-250mm, 150mm-300mm.
- AQUAMASTER MAGNETIC FLOWMETER STRAINER LOCATED AFTER DOWNSTREAM PIPE LENGTHS.
- FLOOR DRAIN REQUIRED WITHIN 2000mm (78") OF METER ASSEMBLY
- FOR POSSIBLE 75mm (3") & 100mm (4") METER SUBSTITUTION USE PARALLEL METER INSTALLATION (SEE DWG 102-0013-025).
- FIVE PIPE DIAMETERS OF STRAIGHT PIPE AHEAD OF STRAINER AND FOUR DIAMETERS OF STRAIGHT PIPE AFTER THE METER.
- ALLOW ADEQUATE ROOM FOR TESTING OF APPROVED BACK FLOW ASSEMBLY.
- THERE SHALL BE NO TAPS, TAKE-OFFS OR TIE-INS TO THE SERVICE PLUMBING UPSTREAM OF THE APPROVED BACK FLOW ASSEMBLY.
- THERE SHALL BE NO BYPASSES AROUND THE APPROVED BACK FLOW ASSEMBLY UNLESS THE BYPASS IS FITTED WITH AN APPROVED BACK FLOW ASSEMBLY OF THE SAME TYPE.
- APPROVED BACK FLOW ASSEMBLY, APPROPRIATE FOR THE HAZARD CLASSIFICATION, TO BE INSTALLED DOWNSTREAM FROM BYPASS. ALL NEW METER INSTALLATIONS MORE THAN THIRTY-EIGHT (38) MILLIMETRES IN DIAMETER SHALL BE FIRST APPROVED BY THE SASKATOON WATER DEPARTMENT, THROUGH THE SUBMISSION OF A METER SETTING DRAWING ACCEPTABLE TO THE SASKATOON WATER DEPARTMENT.
- THE OWNER SHALL PROVIDE A SUITABLE SITE FOR THE WATER METER AT A HORIZONTAL SETTING, WITHIN 2m OF THE POINT OF ENTRY FOR THE WATER SERVICE CONNECTION INSIDE THE BUILDING AS PER BYLAW #7567.
- WATER METERS SHALL REQUIRE 2000mm (6') HEADROOM SERVICE CLEARANCE IN FRONT OF THE METER AND SHALL NOT BE INSTALLED IN CRAWLSPACES, CONFINED ENTRY SPACES OR SPACES THAT REQUIRE A FALL PROTECTION EQUIPMENT SYSTEM FOR ACCESS AS DEFINED BY THE OCCUPATIONAL HEALTH AND SAFETY REGULATIONS OF SASKATCHEWAN. IF THIS CANNOT BE ACHIEVED WITHIN THE TYPICAL DIMENSIONS SHOWN ON THIS DRAWING, THE METER LOCATION AND ACCESS MUST BE APPROVED BY THE SASKATOON WATER DEPARTMENT.
- PIPING MATERIAL AND INSTALLATION MUST COMPLY WITH THE CANADIAN PLUMBING CODE AND THE CITY OF SASKATOON STANDARD CONSTRUCTION SPECIFICATIONS. PIPING ON EACH SIDE OF THE METER SHALL BE ADEQUATELY SUPPORTED AND ANCHORED TO MAINTAIN PIPE ALIGNMENT AND SUPPORT THE WEIGHT OF THE METER AND BACKFLOW ASSEMBLY.
- PROVIDE POWER OUTLET NEAR WATER METER FOR MAGNETIC FLOWMETER INSTALLATIONS. CHECK WITH SASKATOON WATER DEPARTMENT FOR POWER REQUIREMENTS.

EXTRACT FROM BYLAW #7567

NEW WATER METERS

- (1) ALL SERVICED BUILDINGS CONSTRUCTED AFTER THE PASSAGE OF THIS BYLAW SHALL HAVE A REMOTE READOUT WATER METER AT A LOCATION DETERMINED BY SASKATOON WATER DEPARTMENT.
- (2) THE WIRE TYPE USED FOR THE INSTALLATION OF A REMOTE READOUT WATER METER SHALL BE CSA TYPE PCC, FT4, 22AWG OR EQUIVALENT, INSTALLED AT THE OWNER'S EXPENSE.



METER SIZE	MIN LENGTH
75mm (3")	1300mm (52")
100mm (4")	1500mm (60")
150mm (6")	1800mm (72")

PLAN DESCRIPTION/REVISION	DATE	BY
1 UPDATED FROM DRAWING 1020013022-005	2025-MAR-24	SS



TYPICAL LARGE WATER METER
INSTALLATION 75mm, 100mm & 150mm
COMPOUND, TURBINE METERS, &
AQUAMASTER MAGNETIC FLOWMETER

APPROVALS

SIGNATURE Christopher Richards	SIGNATURE Russ Munro
NAME Mar 31, 2025	NAME Mar 31, 2025
DATE SIGNED	DATE SIGNED
SCALES: HOR. NTS VERT. NTS	PLAN NO. 102-0039-001r001