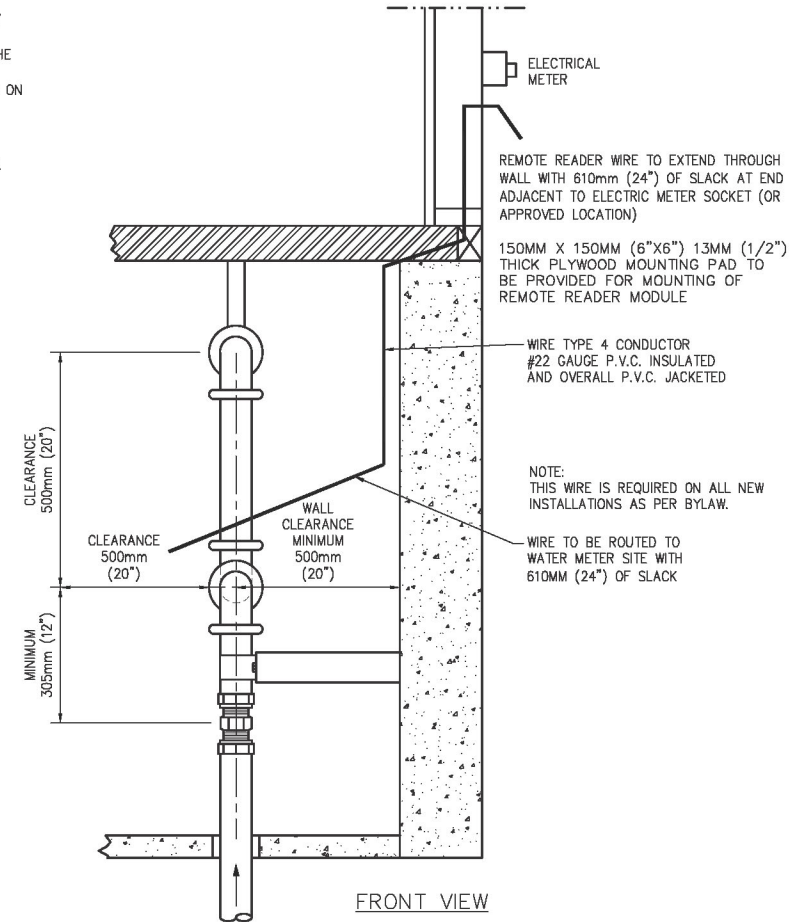
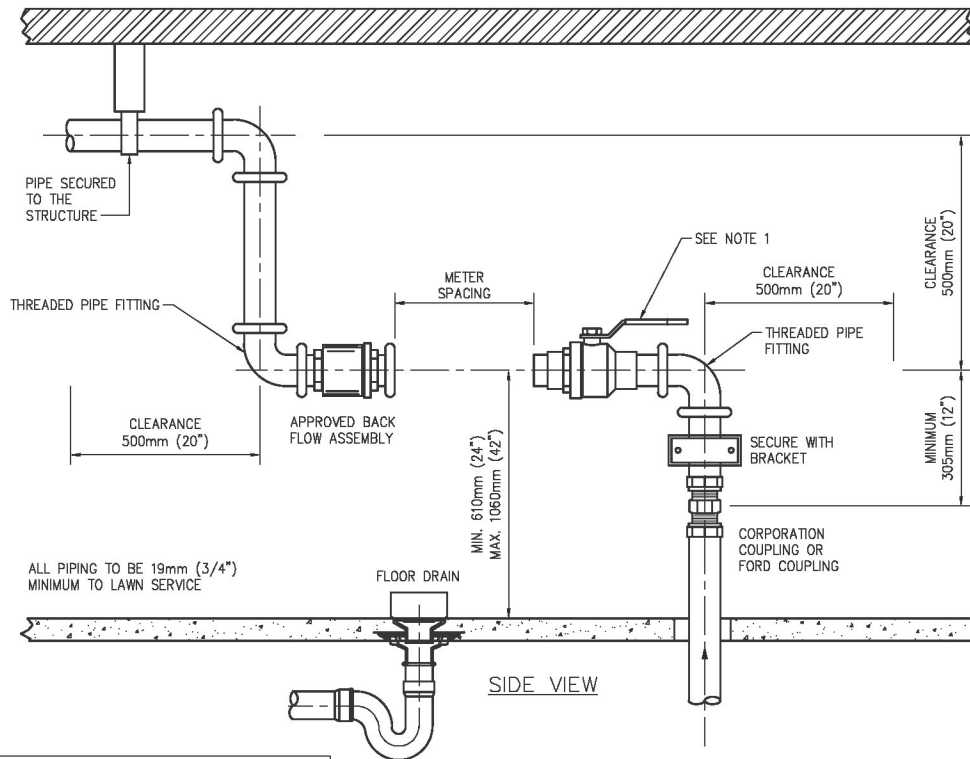


NOTES:

- FULL PORT BALL VALVE UPSTREAM.
- METER MUST BE SITUATED IN AN ACCESSIBLE LOCATION WITH NO PERMANENT FIXTURES WITHIN 500mm (20") OF THE METER.
- *BYPASS IS NOT REQUIRED.* CONTACT WATER METER SECTION FOR APPROVAL REQUIREMENTS.
- METER SPACING (F.I.P. TO F.I.P.)
19mm (3/4") = 330mm (13")
25mm (1") = 380mm (15")
- FLOOR DRAIN REQUIRED WITHIN 2000mm (78") OF METER ASSEMBLY.
- ALLOW ADEQUATE ROOM FOR TESTING OF APPROVED BACK FLOW ASSEMBLY.
- THERE SHALL BE NO TAPS, TAKE-OFFS OR TIE-INS TO THE SERVICE PLUMBING UPSTREAM OF THE APPROVED BACK FLOW ASSEMBLY.
- THERE SHALL BE NO BYPASSES AROUND THE APPROVED BACK FLOW ASSEMBLY UNLESS THE BYPASS IS FITTED WITH AN APPROVED BACK FLOW ASSEMBLY OF THE SAME TYPE.
- APPROVED BACK FLOW ASSEMBLY, APPROPRIATE FOR THE HAZARD CLASSIFICATION MUST BE INSTALLED WITHIN 3m OF SERVICE ENTRY DOWNSTREAM OF THE METER.
- THE OWNER SHALL PROVIDE A SUITABLE SITE FOR THE WATER METER AT A HORIZONTAL SETTING, WITHIN 2m OF POINT OF ENTRY FOR THE WATER SERVICE CONNECTION INSIDE THE BUILDING AS PER BYLAW #7567.
- WATER METERS SHALL REQUIRE 2000mm (6') HEADROOM SERVICE CLEARANCE IN FRONT OF THE METER AND SHALL NOT BE INSTALLED IN CRAWLSPACES, CONFINED ENTRY SPACES OR SPACES THAT REQUIRE A FALL PROTECTION EQUIPMENT SYSTEM FOR ACCESS AS DEFINED BY THE OCCUPATIONAL HEALTH AND SAFETY REGULATIONS OF SASKATCHEWAN. IF THIS CANNOT BE ACHIEVED WITHIN THE TYPICAL DIMENSIONS SHOWN ON THIS DRAWING, THE METER LOCATION AND ACCESS MUST BE APPROVED BY THE SASKATOON WATER DEPARTMENT.
- PIPING MATERIAL AND INSTALLATION MUST COMPLY WITH THE CANADIAN PLUMBING CODE AND THE CITY OF SASKATOON STANDARD CONSTRUCTION SPECIFICATIONS. PIPING ON EACH SIDE OF THE METER SHALL BE ADEQUATELY SUPPORTED AND ANCHORED TO MAINTAIN PIPE ALIGNMENT AND SUPPORT THE WEIGHT OF THE METER AND BACKFLOW ASSEMBLY.
- CORPORATION COUPLING/PIPING MUST BE SECURED SO THAT THE SERVICE IS HELD FIRMLY IN PLACE.
- CURB COCK (CC) MUST BE BETWEEN 150mm & 230mm (6"-9") FROM BELOW FINISHED BACK OF SIDEWALK GRADE, AND POLY PIPE MARKER LEFT IN PLACE AND EXPOSED.
- PROVIDE EXPANSION TANK DOWNSTREAM OF THE BACKFLOW PREVENTOR AS REQUIRED IN ACCORDANCE WITH THE CANADIAN PLUMBING CODE



EXTRACT FROM BYLAW #7567

NEW WATER METERS

- (1) ALL SERVICED BUILDINGS CONSTRUCTED AFTER THE PASSAGE OF THIS BYLAW SHALL HAVE A REMOTE READOUT WATER METER AT A LOCATION DETERMINED BY SASKATOON WATER DEPARTMENT.
- (2) THE WIRE TYPE USED FOR THE INSTALLATION OF A REMOTE READOUT WATER METER SHALL BE CSA TYPE PCC, FT4, 22AWG OR EQUIVALENT, INSTALLED AT THE OWNER'S EXPENSE.

PLAN	DESCRIPTION/REVISION	DATE	BY
1	UPDATED FROM DRAWING 1020013023-005	2025-MAR-24	SS



TYPICAL SMALL WATER METER INSTALLATION 19mm & 25mm (3/4" - 1" METER)

APPROVALS

<p><i>Christopher Richards</i></p> <p>SIGNATURE Christopher Richards</p> <p>NAME Mar 31, 2025</p> <p>DATE SIGNED</p> <p>SCALES: HOR. NTS VERT. NTS</p>		<p><i>Russ Munro</i></p> <p>SIGNATURE Russ Munro</p> <p>NAME Mar 31, 2025</p> <p>DATE SIGNED</p> <p>PLAN NO. 102-0039-002r001</p>	
--	--	---	--