

# 2022 Annual Rainfall Report

Monitoring and Modeling

---



Saskatoon Water  
Utilities and Environment Division

---



## EXECUTIVE SUMMARY

The following report provides a summary of Saskatoon's 2022 rainfall season (April to September) and a comparison with historical rainfall. Highlights of the report include the following:

- In 2022, 203 mm of rainfall accumulated, which was less than the historical average of 263 mm and the 25<sup>th</sup> lowest seasonal rainfall total out of 123 years since 1900.
- On average, least 1 mm of rainfall occurred on 19% of days in 2022.
- Based on the weighted average, 36 mm was the largest amount of rainfall to accumulate in a single day.
- Saskatoon had a normal spring in 2022. The average rainfall between April and June since 1900 is 126 mm. Saskatoon received 123 mm which falls in the 53<sup>rd</sup> percentile for this time period.
- Saskatoon had a dry summer in 2022. The average rainfall between July and September since 1900 is 136 mm. Saskatoon received 80 mm which falls in the 11<sup>th</sup> percentile for this time period.
- At one or more of the eight rain gauges, a 25-100 year rain event occurred on June 20<sup>th</sup>, 2022 and a 5 - 25 year rain event occurred on August 2<sup>nd</sup>, 2022.



## TABLE OF CONTENTS

EXECUTIVE SUMMARY .....	1
TABLE OF CONTENTS .....	2
LIST OF FIGURES.....	3
LIST OF TABLES .....	3
INTRODUCTION.....	4
SUMMARY OF RAINFALL IN 2022.....	5
HISTORICAL COMPARISON.....	7
CLASSIFYING RAIN EVENTS .....	9
CONCLUSION .....	11
APPENDICES.....	12
Appendix A – Total Seasonal Rainfall (1900-2022) .....	12
Appendix B – Return Period of Rain Events by Rain Gauge.....	14



## LIST OF FIGURES

**Figure 1:** Overview of rain gauges..... 4  
**Figure 2:** 2022 daily rainfall. .... 5  
**Figure 3:** 2022 rainfall accumulation..... 6  
**Figure 4:** Seasonal rainfall (1900-2022)..... 7  
**Figure 5:** Maximum daily rainfall. .... 8

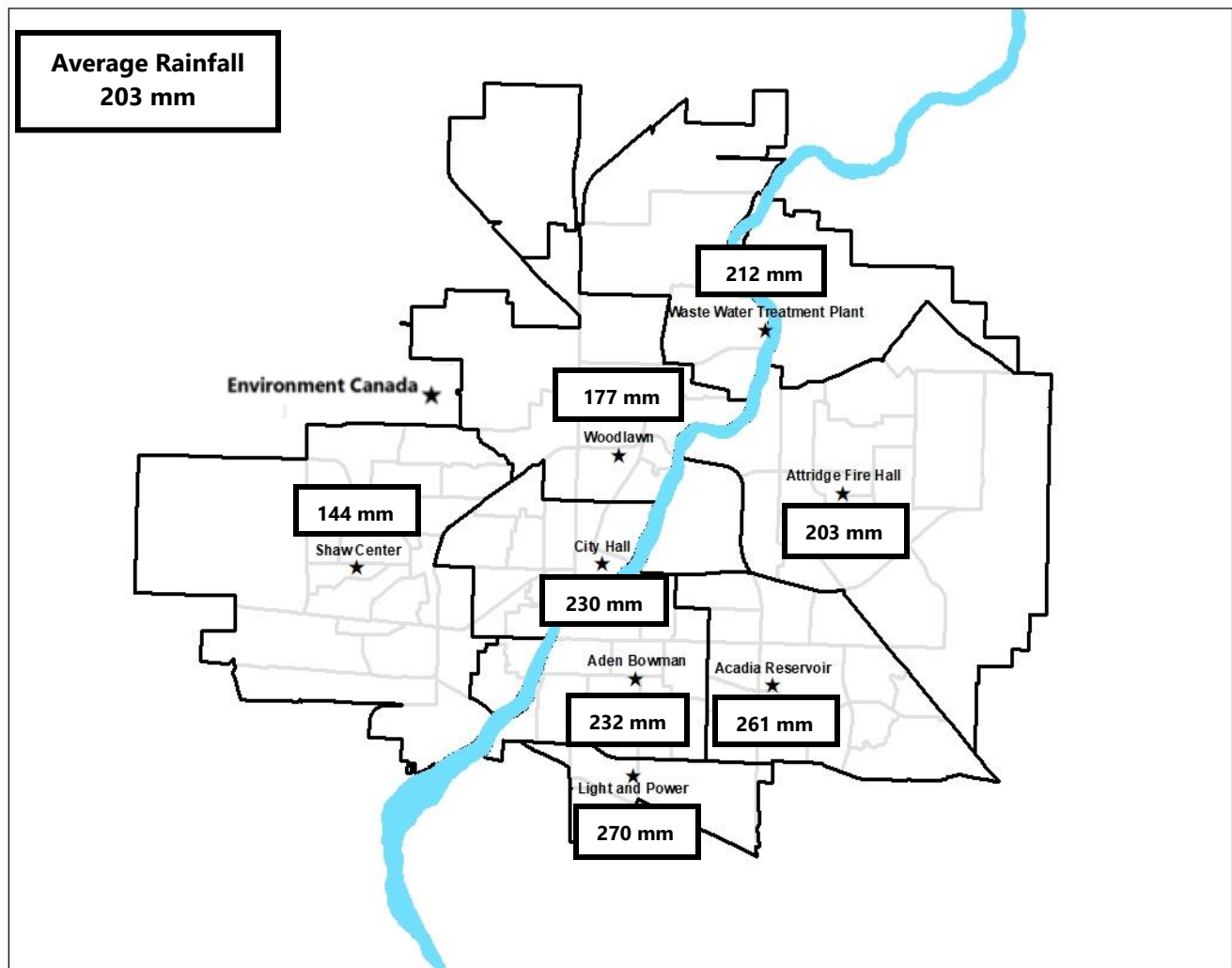
## LIST OF TABLES

**Table 1:** Total daily rainfall percent occurrence. .... 5  
**Table 2:** Criteria for determining return period of a rain event..... 9  
**Table 3:** Average frequency of rain events..... 9  
**Table 4:** Average frequency of rain events greater than or equal to 1 hour duration..... 10  
**Table 5:** Overall frequency of rain events. .... 10  
**Table 6:** Overall frequency of rain events greater than or equal to 1 hour duration. .... 10



## INTRODUCTION

The purpose of this report is to provide a summary of the 2022 rainfall season in Saskatoon and a comparison of this rainfall data with historical rainfall data. Within the scope of this report, a rainfall season is defined as the time period between April 1<sup>st</sup> and September 30<sup>th</sup>. Data between 1900 and 2011 was obtained from the Environment Canada rain gauge while 2012 to 2022 data was obtained from eight City of Saskatoon rain gauges. The name, location, approximate area, and total seasonal rainfall of each rain gauge is shown below.

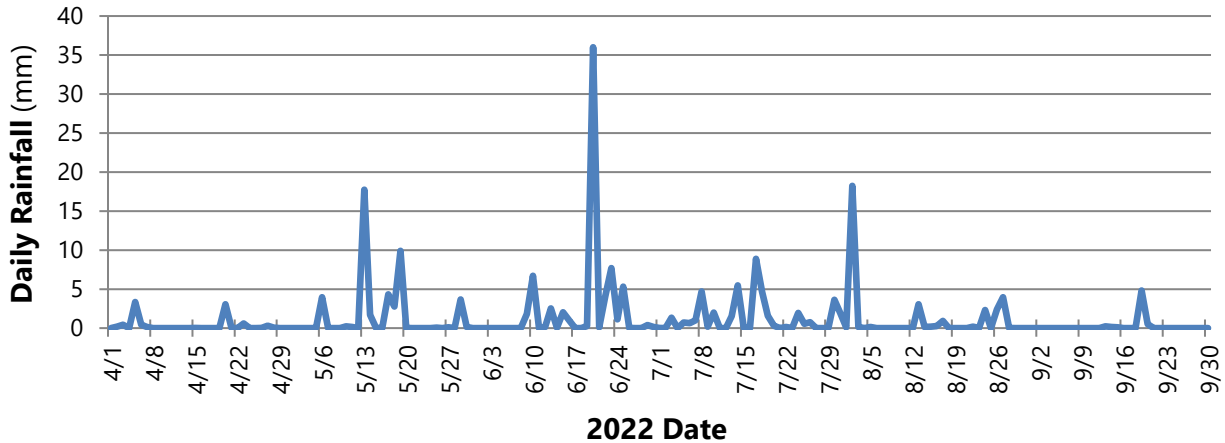


**Figure 1:** Overview of rain gauges.



## SUMMARY OF RAINFALL IN 2022

A daily weighted average for all City of Saskatoon rain gauges was calculated to determine the average daily rainfall for Saskatoon. The following graph depicts the average daily rainfall that occurred in Saskatoon throughout the 2022 rainfall season.



**Figure 2:** 2022 daily rainfall.

Based on the weighted average, the largest amount of rainfall occurred on June 20<sup>th</sup>, 2022 with a total of 36 mm. This rainfall accounted for approximately 18% of the total rainfall that occurred in 2022.

Table 1 presents the percentage of days with total rainfall greater than or equal to 0.2 mm, 1 mm, 5 mm, 10 mm, and 25 mm at each rain gauge.

**Table 1:** Total daily rainfall percent occurrence.

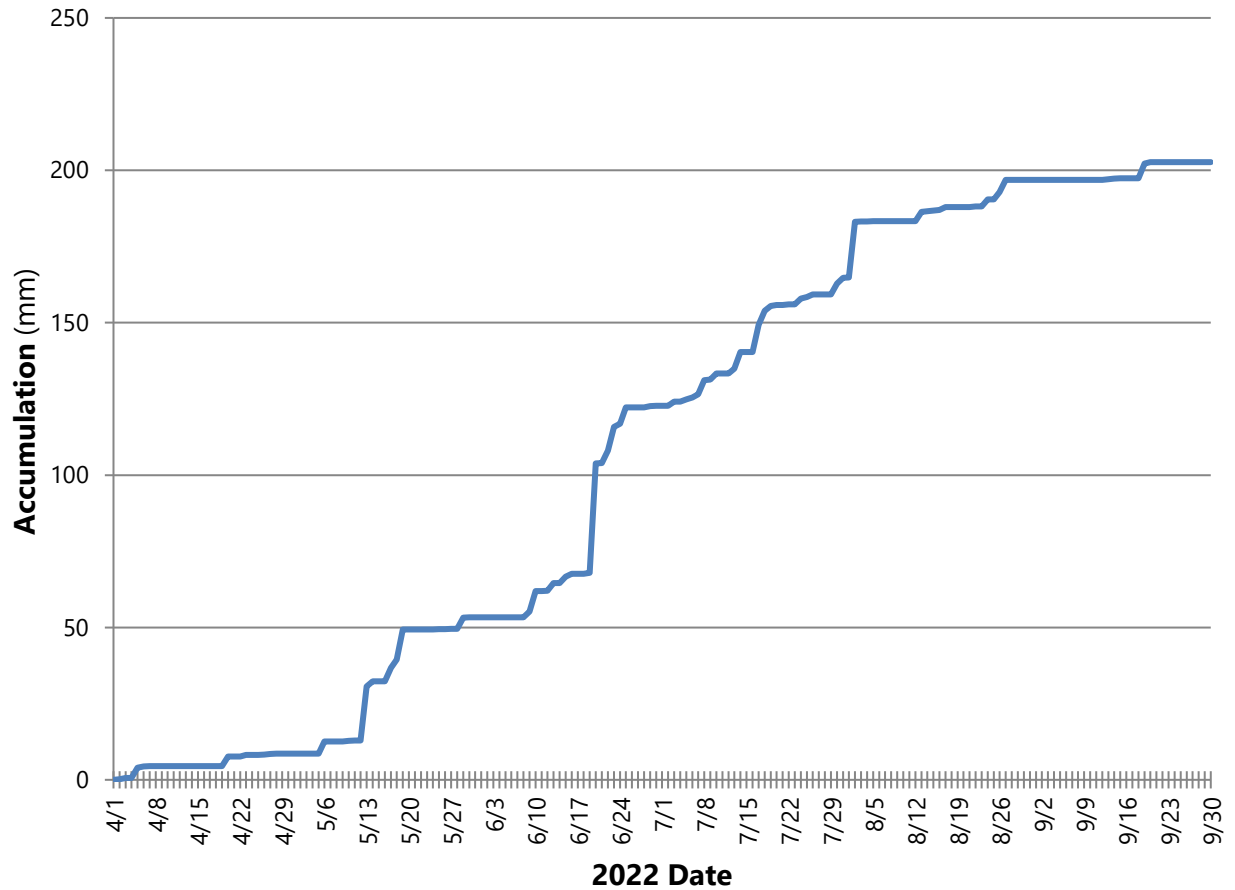
Location	≥ 0.2 mm	≥ 1 mm	≥ 5 mm	≥ 10 mm	≥ 25 mm
Acadia Reservoir	32%	19%	7%	3%	1%
Attridge Fire Hall	31%	20%	6%	2%	1%
Aden Bowman	27%	17%	7%	2%	1%
City Hall	34%	18%	8%	2%	1%
Light and Power	32%	20%	8%	3%	1%
Shaw Centre	29%	17%	6%	1%	0%
WWTP	32%	17%	6%	2%	1%
Woodlawn	36%	19%	5%	2%	1%
<b>Average</b>	<b>32%</b>	<b>19%</b>	<b>6%</b>	<b>2%</b>	<b>1%</b>

On average, least 1 mm of rainfall occurred on 19% of days in 2022.



## SUMMARY OF RAINFALL IN 2022

The daily weighted average rainfall was added together to calculate the total seasonal rainfall. The total seasonal rainfall for 2022 was 203 mm. Figure 3 depicts the accumulation of rainfall throughout the 2022 season.



**Figure 3:** 2022 rainfall accumulation.

The 2022 rainfall season began with a normal spring (May to June) accumulating a total of 123 mm compared to the average spring accumulation of 126 mm. This was followed by a dry summer (July to September) which accumulated 80 mm and was the 15<sup>th</sup> lowest summer rainfall out of 123 years since 1900.

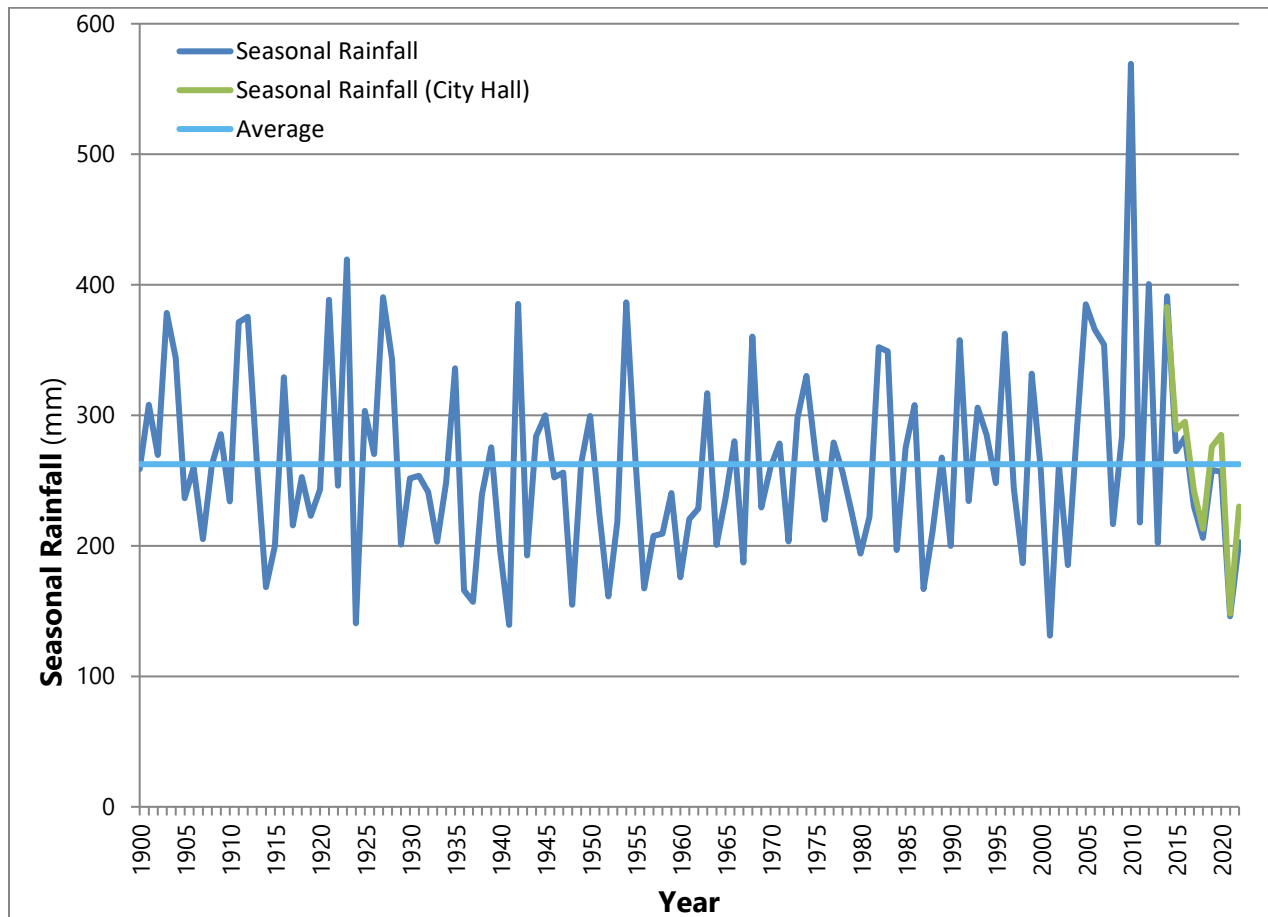


## HISTORICAL COMPARISON

Seasonal rainfall and maximum daily rainfall values from 1900 to 2011 were based on a single Environment Canada rain gauge and from 2012 to 2022 rainfall was calculated using a weighted average from eight City of Saskatoon rain gauges. For comparison, data from a single City of Saskatoon rain gauge (City Hall) for the years 2012 to 2022 was added to Figures 4 and 5.

The average seasonal rainfall from 1900 to 2022 in Saskatoon is 263 mm which is depicted by the light blue line in Figure 4. The 2022 seasonal rainfall of 203 mm was below average and the 25<sup>th</sup> lowest rainfall out of 123 years since 1900.

The lowest seasonal rainfall occurred in 2001 with 131 mm and the highest seasonal rainfall occurred in 2010 with 569 mm. A table containing the seasonal rainfalls from 1900 to 2022 is shown in Appendix A.



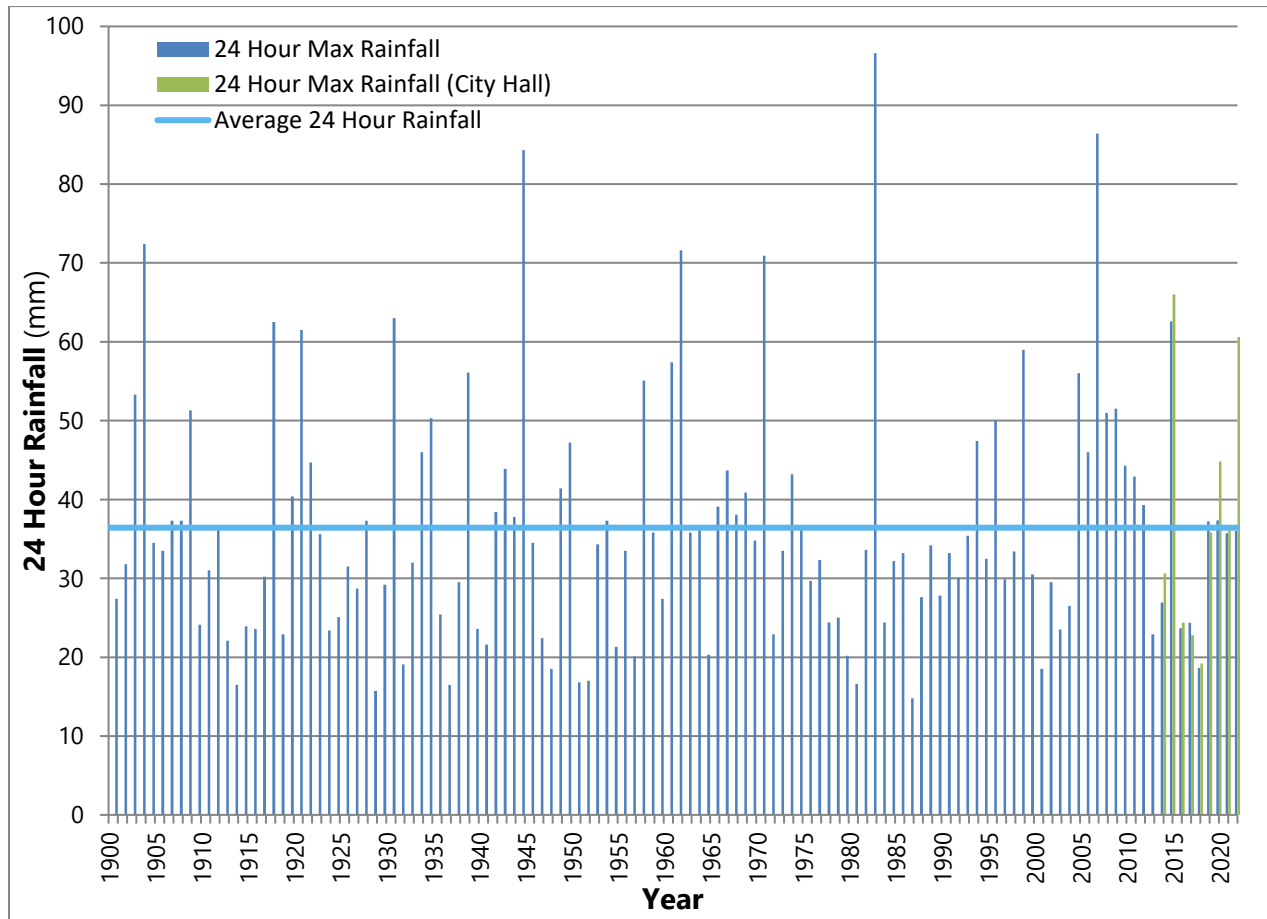
**Figure 4:** Seasonal rainfall (1900-2022).





## HISTORICAL COMPARISON

The following graph provides a comparison of the maximum amount of rainfall to occur in a single day in each season. The average maximum rainfall in a single day in a season is 36 mm from the years 1900 to 2022 and is represented by the light blue line in Figure 5. During the 2022 rainfall season, the maximum rainfall to occur within a single day was 36 mm, which was on June 20<sup>th</sup>.



**Figure 5:** Maximum daily rainfall.

As can be seen in the graph above, the lowest maximum daily rainfall occurred on July 19<sup>th</sup>, 1987, with a total of 15 mm and the highest occurred on June 24<sup>th</sup>, 1983 with a total of 97 mm.



## CLASSIFYING RAIN EVENTS

Rain events in Saskatoon are often localized. Therefore, a rain event may only occur at a few of the eight rain gauges located throughout the city. In order to compare the severity of rain events, their return period must be determined. A return period provides an indication of the likelihood of an event. For example, a rain event with a return period of 2 years has a 50% chance of occurring in any given year. For comparison, a rain event with a return period of 100 years has a 1% chance of occurring in any given year. The following table provides a summary of the criteria used to determine the return period of each rain event.

**Table 2:** Criteria for determining return period of a rain event.

Time (minutes)	Intensity (mm/hr)			
	2-Year	5-Year	25-Year	100-Year
10	53	85	132	168
15	41	67	104	133
30	26.4	46.1	74	97
60	16.6	28.9	46.5	60
120	10.7	17.5	27.3	35
360	4.7	7.0	10.3	12.9
720	2.73	3.90	5.59	6.91
1440	1.56	2.18	3.07	3.76

For the purposes of this report, two different methods were utilized to determine the number of rain events with a return period of 2, 5, 25, or 100 years between 2012 and 2022. It should be noted that within this report, rain events with the same return period may include any of the durations as outlined in Table 2. The first method determined the average number of rain events for each return period by adding together the number of events in a season with the same return period at each of the city's rain gauges and dividing that number by the total number of rain gauges. The following table provides a summary of these values. A detailed table showing return periods recorded at each rain gauge is provided in Appendix B.

**Table 3:** Average frequency of rain events.

Return Period	2012	2013	2014	2015	2016	2017	2018	2019	2020	2021	2022	Total
<b>Average</b> 2 – 5 Year	4	1	3	1	1	1	1	3	2	1	1	19
5 – 25 Year	0	0	0	1	0	0	0	0	0	0	1	2
25 – 100 Year	0	0	0	0	0	0	0	0	0	0	0	0
> 100 Years	0	0	0	0	0	0	0	0	0	0	0	0
<b>Total</b>	<b>4</b>	<b>1</b>	<b>3</b>	<b>2</b>	<b>1</b>	<b>1</b>	<b>1</b>	<b>3</b>	<b>2</b>	<b>1</b>	<b>2</b>	<b>21</b>



## CLASSIFYING RAIN EVENTS

In Table 4, the rain events were tallied using the same method as Table 3, except only rain events with a duration of 1 hour or greater were counted.

**Table 4:** Average frequency of rain events greater than or equal to 1 hour duration.

	Return Period	2012	2013	2014	2015	2016	2017	2018	2019	2020	2021	2022	Total
<b>Average</b>	2 – 5 Year	3	1	2	1	0	1	0	1	2	1	0	12
	5 – 25 Year	0	0	0	1	0	0	0	0	0	0	0	1
	25 – 100 Year	0	0	0	0	0	0	0	0	0	0	0	0
	> 100 Years	0	0	0	0	0	0	0	0	0	0	0	0
	<b>Total</b>	<b>3</b>	<b>1</b>	<b>2</b>	<b>2</b>	<b>0</b>	<b>1</b>	<b>0</b>	<b>1</b>	<b>2</b>	<b>1</b>	<b>0</b>	<b>13</b>

The second method determined the number of days per year that a major rain event occurred at one or more rain gauges. If the rain gauges throughout the City recorded varying return periods on a given day, the maximum return period was counted as the rain event for that day. The following table provides the number of days per year that a major rain event occurred at one or more rain gauges.

**Table 5:** Overall frequency of rain events.

	Return Period	2012	2013	2014	2015	2016	2017	2018	2019	2020	2021	2022	Total
<b>Overall</b>	2 – 5 Year	8	5	6	3	3	2	3	5	2	2	0	39
	5 – 25 Year	0	1	1	0	0	1	0	2	0	1	1	7
	25 – 100 Year	0	0	0	1	0	0	0	0	0	0	1	2
	> 100 Years	0	0	0	0	0	0	0	0	0	0	0	0
	<b>Total</b>	<b>8</b>	<b>6</b>	<b>7</b>	<b>4</b>	<b>3</b>	<b>3</b>	<b>3</b>	<b>7</b>	<b>2</b>	<b>3</b>	<b>2</b>	<b>48</b>

In Table 6, the days per year were tallied using the same method as Table 5, except only days with a rain event of 1 hour duration or greater were counted.

**Table 6:** Overall frequency of rain events greater than or equal to 1 hour duration.

	Return Period	2012	2013	2014	2015	2016	2017	2018	2019	2020	2021	2022	Total
<b>Overall</b>	2 – 5 Year	6	4	3	1	2	1	2	2	2	1	0	24
	5 – 25 Year	0	0	0	0	0	1	0	0	0	1	0	2
	25 – 100 Year	0	0	0	1	0	0	0	0	0	0	1	2
	> 100 Years	0	0	0	0	0	0	0	0	0	0	0	0
	<b>Total</b>	<b>6</b>	<b>4</b>	<b>3</b>	<b>2</b>	<b>2</b>	<b>2</b>	<b>2</b>	<b>2</b>	<b>2</b>	<b>2</b>	<b>1</b>	<b>28</b>



## CONCLUSION

Overall, the 2022 rainfall season had a normal accumulation compared to the historical seasonal average. In 2022, two rain events occurred, one with a maximum return period of 5 - 25 years and the other with a maximum return period of 25 - 100 years. Based on a weighted average, the most rainfall to occur within a single day was 36 mm, which was on June 20<sup>th</sup>, 2022.



APPENDICES

**Appendix A – Total Seasonal Rainfall (1900-2022)**



APPENDIX A

Year	Rain (mm)	Rank	Year	Rain (mm)	Rank	Year	Rain (mm)	Rank
1900	259	58	1942	385	8	1984	197	105
1901	308	27	1943	193	108	1985	275	44
1902	270	48	1944	284	37	1986	308	28
1903	379	10	1945	300	31	1987	167	115
1904	344	20	1946	252	65	1988	211	92
1905	236	75	1947	256	62	1989	268	50
1906	260	56	1948	155	119	1990	200	103
1907	205	96	1949	263	52	1991	358	16
1908	262	53	1950	300	32	1992	234	77
1909	286	35	1951	224	83	1993	306	29
1910	234	78	1952	161	117	1994	285	36
1911	371	12	1953	218	88	1995	248	68
1912	375	11	1954	387	7	1996	362	14
1913	266	51	1955	268	49	1997	244	70
1914	168	113	1956	167	114	1998	187	110
1915	200	104	1957	208	94	1999	332	23
1916	329	25	1958	209	93	2000	259	57
1917	216	91	1959	241	73	2001	131	123
1918	253	64	1960	176	112	2002	262	54
1919	223	84	1961	221	86	2003	185	111
1920	243	71	1962	229	81	2004	288	34
1921	389	6	1963	317	26	2005	385	9
1922	246	69	1964	201	102	2006	366	13
1923	420	2	1965	236	76	2007	354	17
1924	141	121	1966	280	40	2008	217	90
1925	303	30	1967	187	109	2009	284	38
1926	270	47	1968	360	15	2010	569	1
1927	391	5	1969	229	80	2011	218	89
1928	343	21	1970	261	55	2012	401	3
1929	201	101	1971	279	42	2013	202	100
1930	252	66	1972	203	97	2014	391	4
1931	254	63	1973	298	33	2015	272	45
1932	241	72	1974	330	24	2016	283	39
1933	203	98	1975	271	46	2017	230	79
1934	249	67	1976	220	87	2018	206	95
1935	336	22	1977	279	41	2019	258	59
1936	166	116	1978	256	61	2020	257	60
1937	157	118	1979	226	82	2021	146	120
1938	239	74	1980	194	107	2022	203	99
1939	275	43	1981	222	85			
1940	196	106	1982	352	18			
1941	139	122	1983	349	19			



APPENDICES

## Appendix B – Return Period of Rain Events by Rain Gauge



**APPENDIX B**

	Return Period	2012	2013	2014	2015	2016	2017	2018	2019	2020	2021	2022	Total
<b>Waste Water Treatment Plant</b>	2 - 5 Year	4	0	3	1	1	1	1	3	1	1	1	17
	5 - 25 Year	0	0	0	1	0	0	0	1	0	0	1	3
	25 - 100 Year	0	0	0	0	0	0	0	0	0	0	0	0
	> 100 Year	0	0	0	0	0	0	0	0	0	0	0	0
	<b>Total</b>	<b>4</b>	<b>0</b>	<b>3</b>	<b>2</b>	<b>1</b>	<b>1</b>	<b>1</b>	<b>1</b>	<b>4</b>	<b>1</b>	<b>1</b>	<b>2</b>
<b>Woodlawn</b>	2 - 5 Year	5	1	3	2	1	1	0	4	2	0	2	21
	5 - 25 Year	0	1	0	1	0	0	0	0	0	0	0	2
	25 - 100 Year	0	0	0	0	0	0	0	0	0	0	0	0
	> 100 Year	0	0	0	0	0	0	0	0	0	0	0	0
	<b>Total</b>	<b>5</b>	<b>2</b>	<b>3</b>	<b>3</b>	<b>1</b>	<b>1</b>	<b>0</b>	<b>4</b>	<b>1</b>	<b>0</b>	<b>2</b>	<b>23</b>
<b>Shaw Centre</b>	2 - 5 Year	5	2	5	3	1	1	1	2	1	2	1	24
	5 - 25 Year	0	0	0	1	0	0	0	0	0	0	0	1
	25 - 100 Year	0	0	0	0	0	0	0	0	0	0	0	0
	> 100 Year	0	0	0	0	0	0	0	0	0	0	0	0
	<b>Total</b>	<b>5</b>	<b>2</b>	<b>5</b>	<b>4</b>	<b>1</b>	<b>1</b>	<b>1</b>	<b>2</b>	<b>1</b>	<b>2</b>	<b>1</b>	<b>25</b>
<b>Nicholson Yards</b>	2 - 5 Year	2	0	2	1	0							5
	5 - 25 Year	0	0	1	1	0							2
	25 - 100 Year	0	0	0	0	0							0
	> 100 Year	0	0	0	0	0							0
	<b>Total</b>	<b>2</b>	<b>0</b>	<b>3</b>	<b>2</b>	<b>0</b>							
<b>Light and Power</b>	2 - 5 Year	2	2	3	0	1	0	1	4		2	0	15
	5 - 25 Year	0	0	0	0	0	1	0	0		0	1	2
	25 - 100 Year	0	0	0	1	0	0	0	0		0	1	2
	> 100 Year	0	0	0	0	0	0	0	0		0	0	0
	<b>Total</b>	<b>2</b>	<b>2</b>	<b>3</b>	<b>1</b>	<b>1</b>	<b>1</b>	<b>1</b>	<b>4</b>		<b>2</b>	<b>2</b>	<b>19</b>
<b>City Hall</b>	2 - 5 Year	5	3	4	1	1	1	2	2	2	1	1	23
	5 - 25 Year	0	0	0	0	0	0	0	1	0	0	1	2
	25 - 100 Year	0	0	0	1	0	0	0	0	0	0	0	1
	> 100 Year	0	0	0	0	0	0	0	0	0	0	0	0
	<b>Total</b>	<b>5</b>	<b>3</b>	<b>4</b>	<b>2</b>	<b>1</b>	<b>1</b>	<b>2</b>	<b>3</b>	<b>2</b>	<b>1</b>	<b>2</b>	<b>26</b>
<b>Attridge Fire Hall</b>	2 - 5 Year	1	1	1	1	0	0	0	2		0	2	8
	5 - 25 Year	0	0	0	1	0	0	0	0		0	0	1
	25 - 100 Year	0	0	0	0	0	0	0	0		0	0	0
	> 100 Year	0	0	0	0	0	0	0	0		0	0	0
	<b>Total</b>	<b>1</b>	<b>1</b>	<b>1</b>	<b>2</b>	<b>0</b>	<b>0</b>	<b>0</b>	<b>2</b>		<b>0</b>	<b>2</b>	<b>9</b>
<b>Aden Bowman</b>	2 - 5 Year									1	0	0	1
	5 - 25 Year									0	0	1	1
	25 - 100 Year									0	0	1	1
	> 100 Year									0	0	0	0
	<b>Total</b>									<b>1</b>	<b>0</b>	<b>2</b>	<b>3</b>
<b>Acadia Reservoir</b>	2 - 5 Year	4	1	2	1	2	2	0	2	2	0	1	17
	5 - 25 Year	0	0	0	1	0	0	0	1	0	1	1	4
	25 - 100 Year	0	0	0	0	0	0	0	0	0	0	0	0
	> 100 Year	0	0	0	0	0	0	0	0	0	0	0	0
	<b>Total</b>	<b>4</b>	<b>1</b>	<b>2</b>	<b>2</b>	<b>2</b>	<b>2</b>	<b>0</b>	<b>3</b>	<b>2</b>	<b>1</b>	<b>2</b>	<b>21</b>