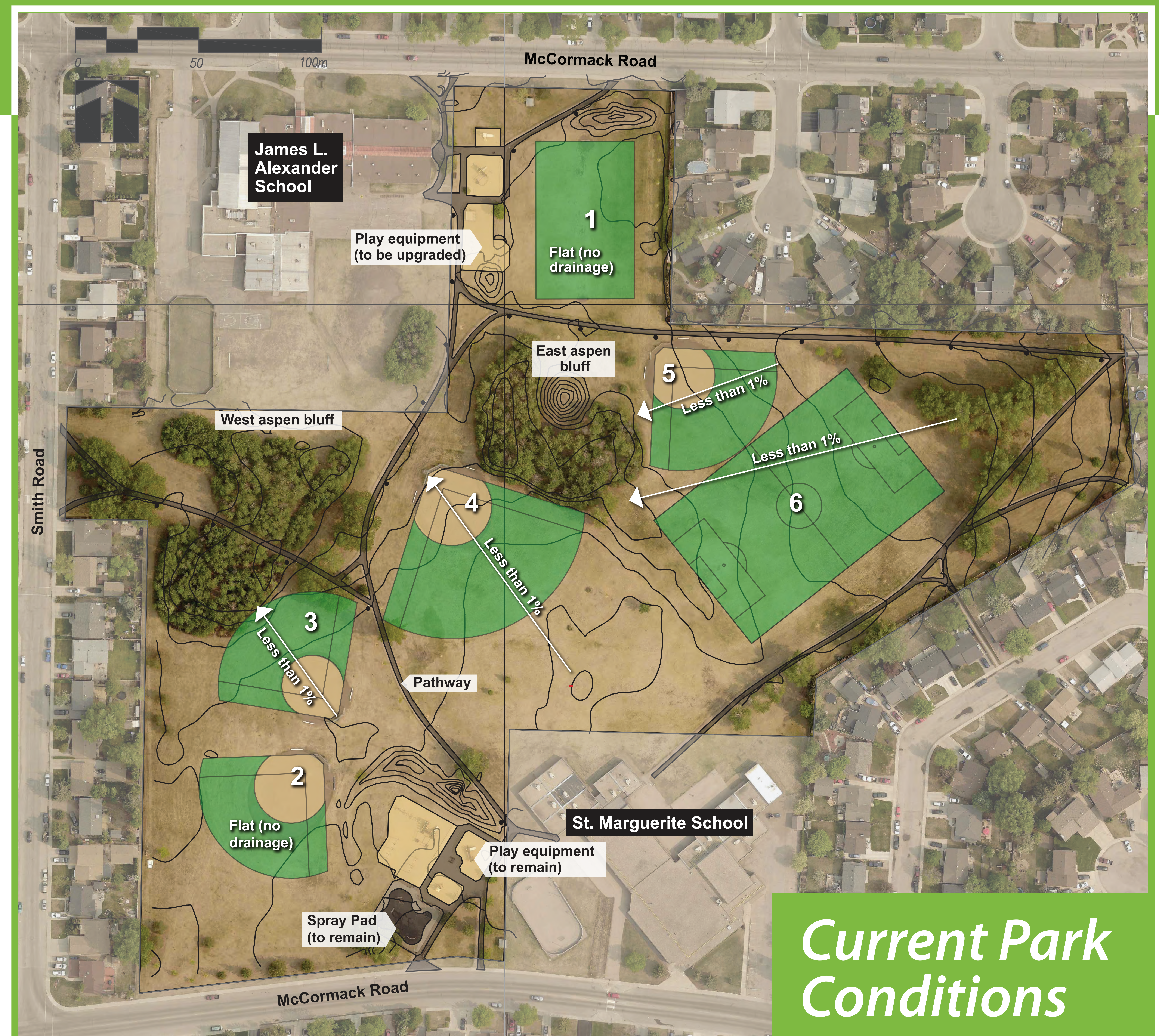


PARKRIDGE PARK UPGRADE Project

In 2023, Parkridge Park will be upgraded to address deficiencies and bring the park up to current standards.

The following conditions currently exist in the park:

- **Play structure** near James L. Alexander School is in need of replacement.
- **Spray Pad** near St. Marguerite School will remain.
- **Pathways** are narrow (1.8 m wide) and in poor condition.
- **Lighting** is inconsistent and does not meet current standards.
- **Park furniture** is in need of replacement.
- **Sports Fields:**
 - Fields 2, 3, 4 & 5 are smaller than current standards.
 - Fields 3 & 5 conflict with plantings or other sports fields.
 - None of the fields have proper drainage.
 - Turf is in poor condition on Fields 1 & 2.



Note: This is a conceptual design only; it illustrates the design intent for the park, addressing the program elements. During the next stages of the process (detail design, tender and construction) minor changes may occur to the plan as a result of budgets, material availability or site conditions. Only changes affecting the program elements will be communicated to the public.

PARKRIDGE PARK UPGRADE

Sports Fields

The park upgrade will include redesigning the sports fields to bring them up to current standards.

This will mean decreasing the number fields in order to increase their size and improve drainage. Fields 1 and 4 will be reoriented to integrate with nearby park components and align with the natural drainage characteristics of the site.



Note: This is a conceptual design only; it illustrates the design intent for the park, addressing the program elements. During the next stages of the process (detail design, tender and construction) minor changes may occur to the plan as a result of budgets, material availability or site conditions. Only changes affecting the program elements will be communicated to the public.

PARKRIDGE PARK UPGRADE

Amenities

The project will include updates to park features such as pathways, furniture and lighting.



Note: This is a conceptual design only; it illustrates the design intent for the park, addressing the program elements. During the next stages of the process (detail design, tender and construction) minor changes may occur to the plan as a result of budgets, material availability or site conditions. Only changes affecting the program elements will be communicated to the public.

PARKRIDGE PARK UPGRADE

Plantings

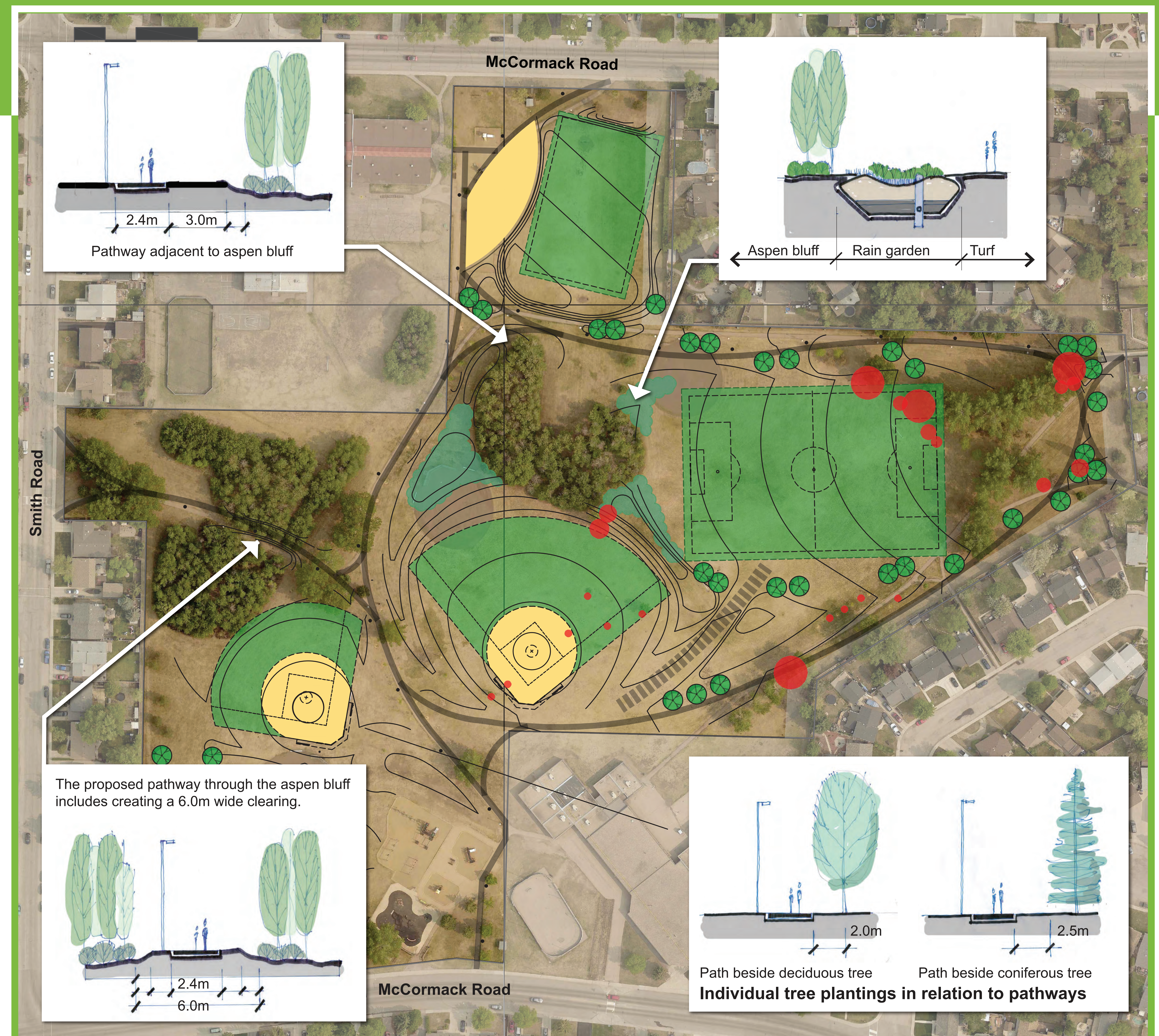
Trees

In order to balance the drainage requirements for the sports fields, placement of the pathways and sight lines for pedestrians, approximately 22 trees will need to be removed ●.

However, approximately 38 new trees will be planted throughout the park ●.

Rain Gardens

A “rain garden” will be integrated around the perimeter of the east aspen bluff. A “rain garden” is a naturalized landscape feature that includes a variety of plants that help to slow down and temporarily hold storm water runoff and prevent pollution from entering our waterways.



Note: This is a conceptual design only; it illustrates the design intent for the park, addressing the program elements. During the next stages of the process (detail design, tender and construction) minor changes may occur to the plan as a result of budgets, material availability or site conditions. Only changes affecting the program elements will be communicated to the public.

PARKRIDGE PARK UPGRADE

Irrigation

The irrigation system will receive a complete upgrade to bring it up to current standards.

The areas that will receive irrigation are street frontages, high profile areas (spray pad and play structures) and sports fields.



Note: This is a conceptual design only; it illustrates the design intent for the park, addressing the program elements. During the next stages of the process (detail design, tender and construction) minor changes may occur to the plan as a result of budgets, material availability or site conditions. Only changes affecting the program elements will be communicated to the public.

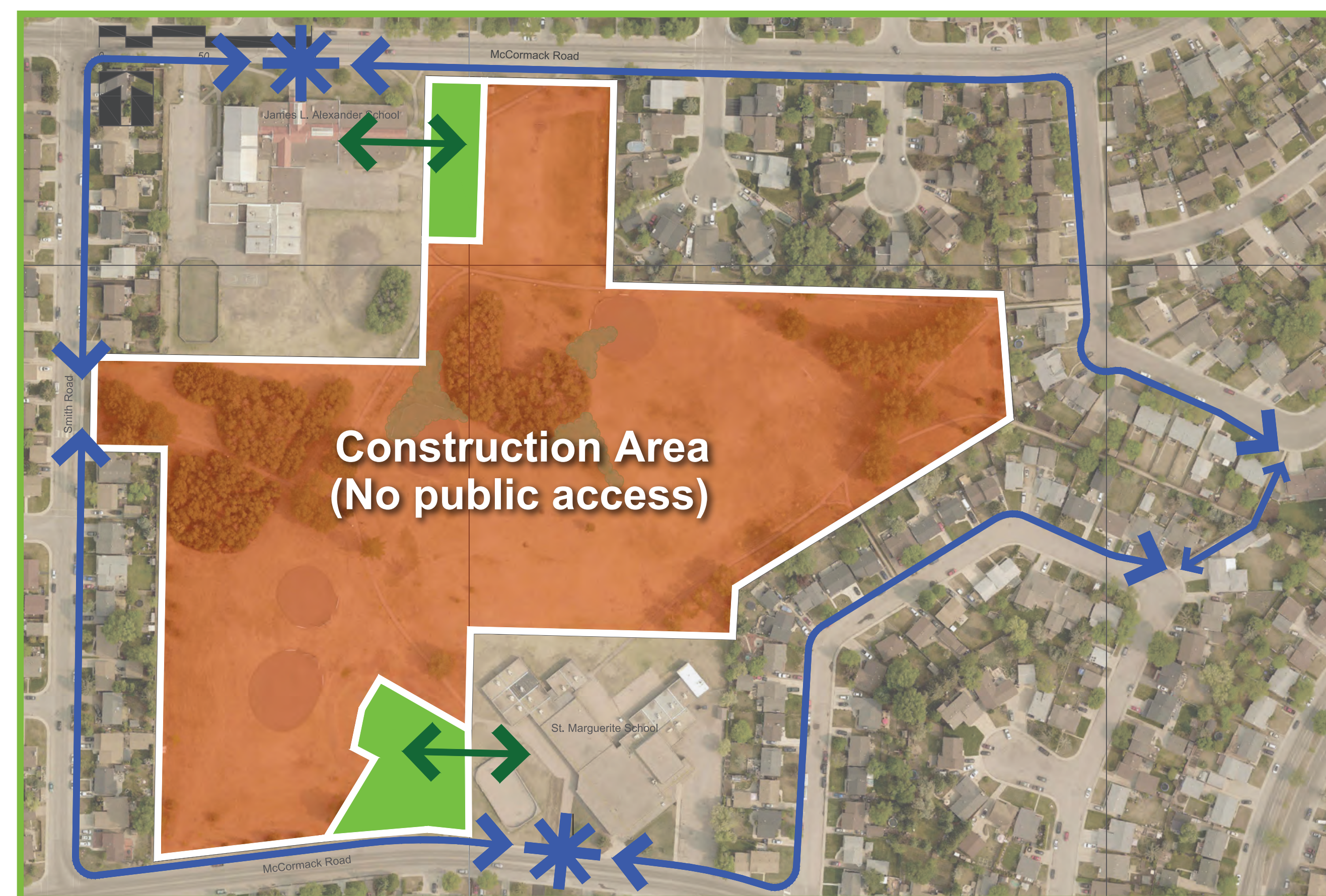
PARKRIDGE PARK UPGRADE

Proposed Construction Schedule

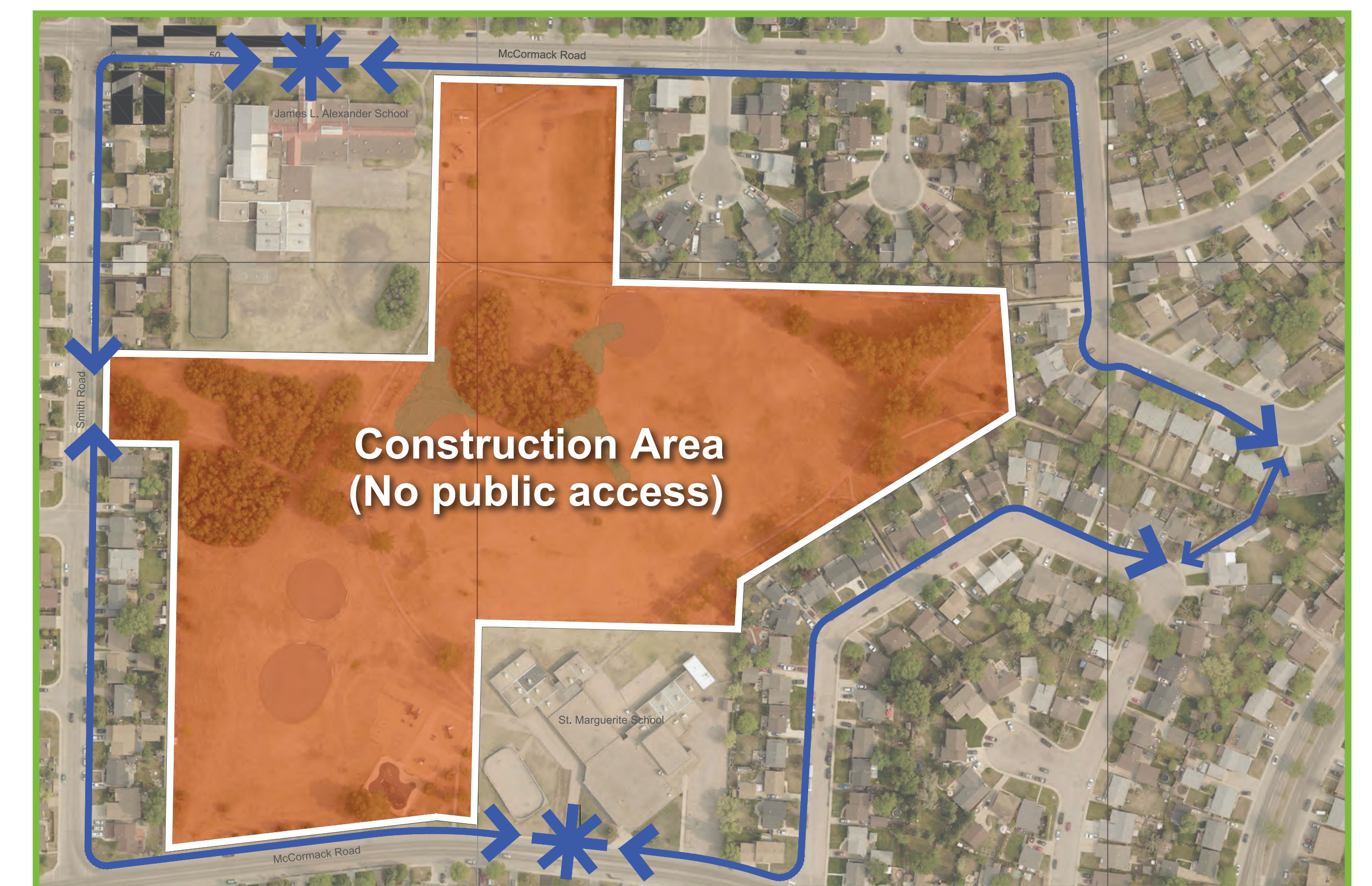
Construction for the Parkridge Park Upgrade project is scheduled to take place in 2023. In order for construction to be completed over one season and minimize disruption to the schools, the park will need to be closed from May to October. The play structures will remain accessible in May/June and September/October, but will be closed in July and August.

What to Expect

- Once park closure dates are known, they will be communicated to both schools, Parkridge Community Association and area residents.
- Construction fencing will be installed to separate the construction zone from the public.
- A site safety review will be conducted before construction begins.
- Detour routes will be identified for pedestrians who typically walk through the park.



Phase 1: May 1 - July 1 (Spring Semester)
Park closed to public; play structures remain accessible.



Phase 2: July 1 - Sept 1 (Summer Recess)
Park completely closed to public, including pathways, play structures and spray pad.



Phase 3: Sept 1 - Nov 1 (Fall Semester)
Portions of the park may be closed to the public while contractor completes construction; Play structures will be accessible.



November 1: Park open to the public