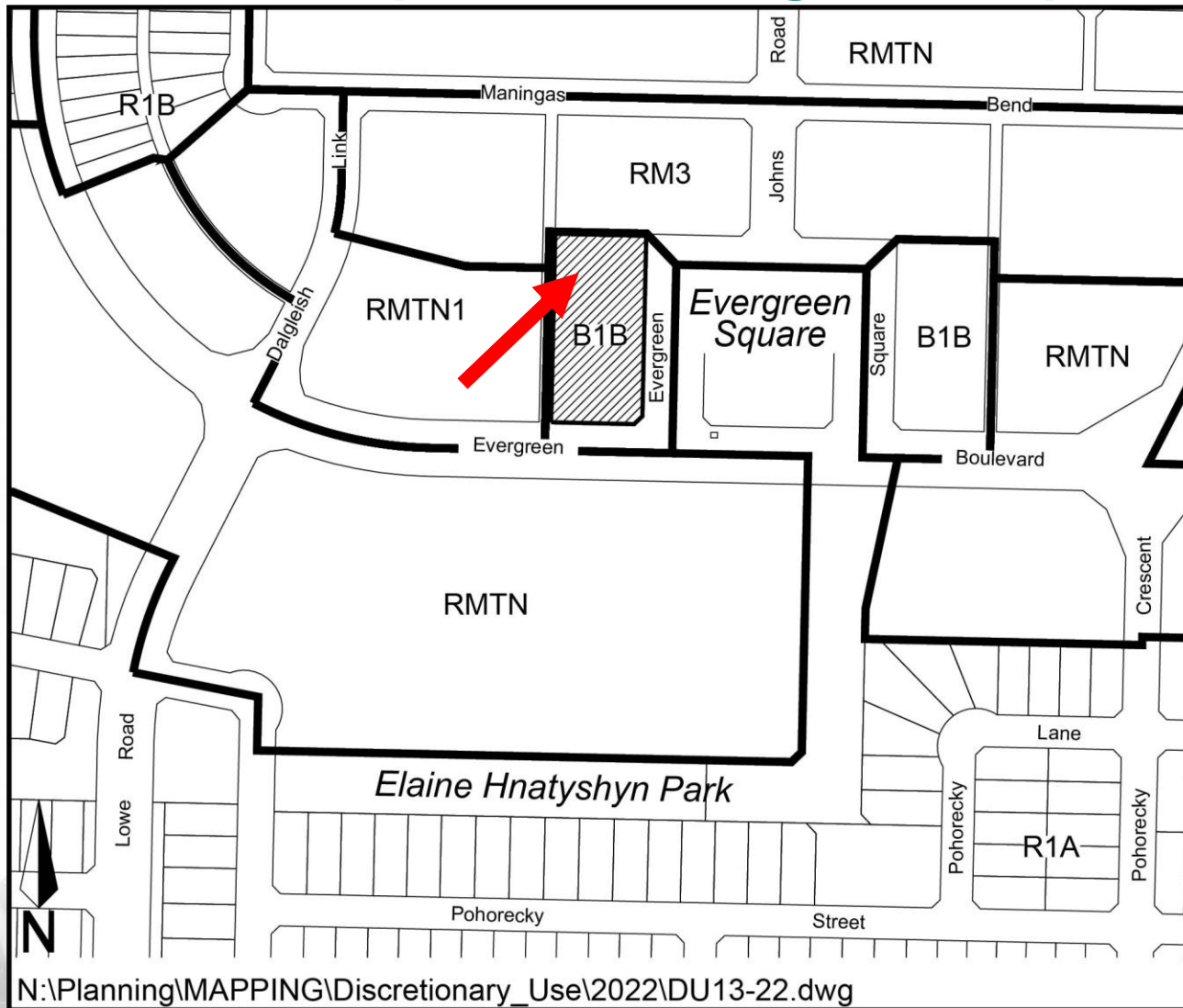


Public Information Meeting

Units 90, 100, and 110 - 245 Evergreen Square Day Care

Location Map – 245 Evergreen Square



Background

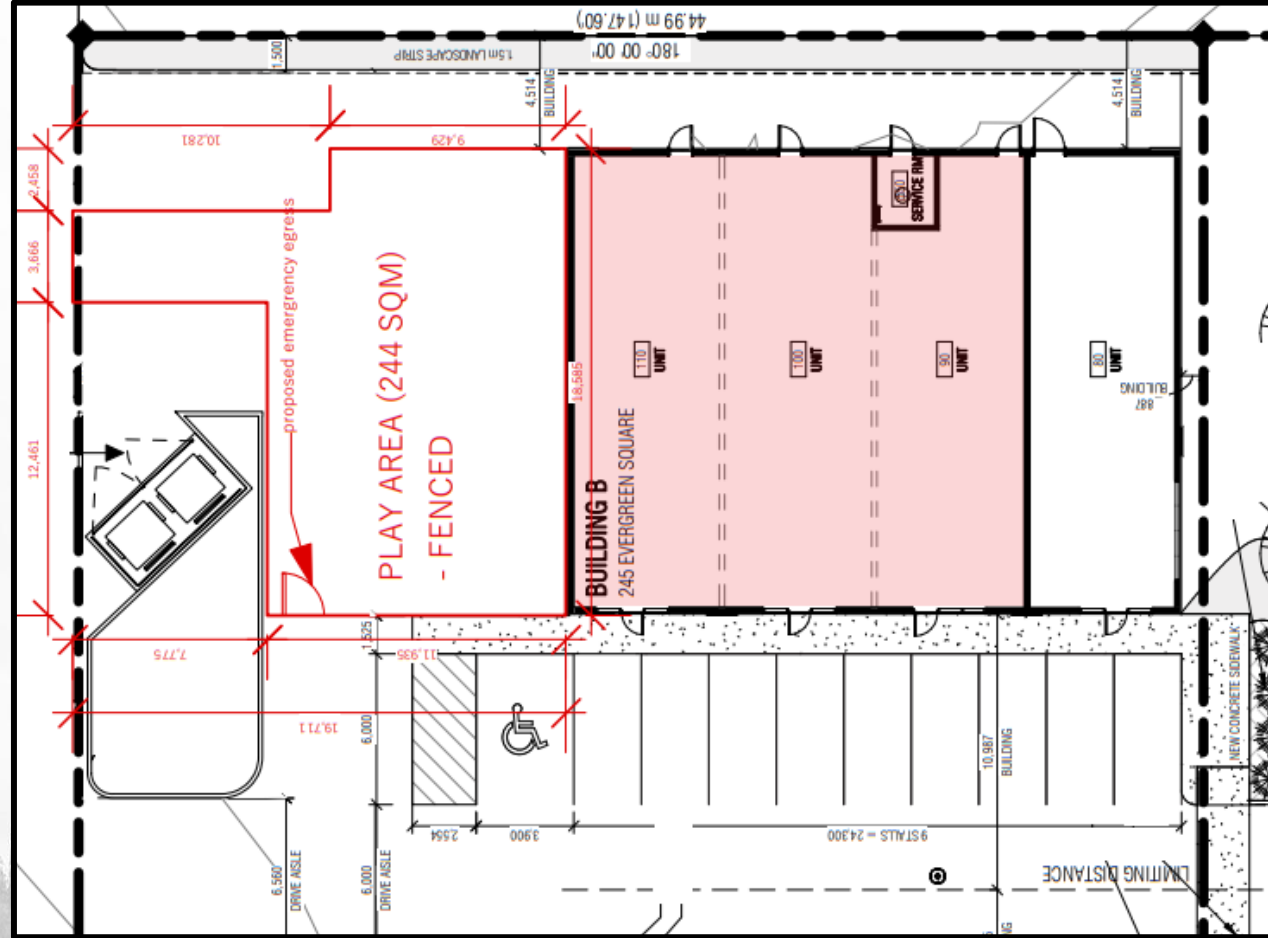
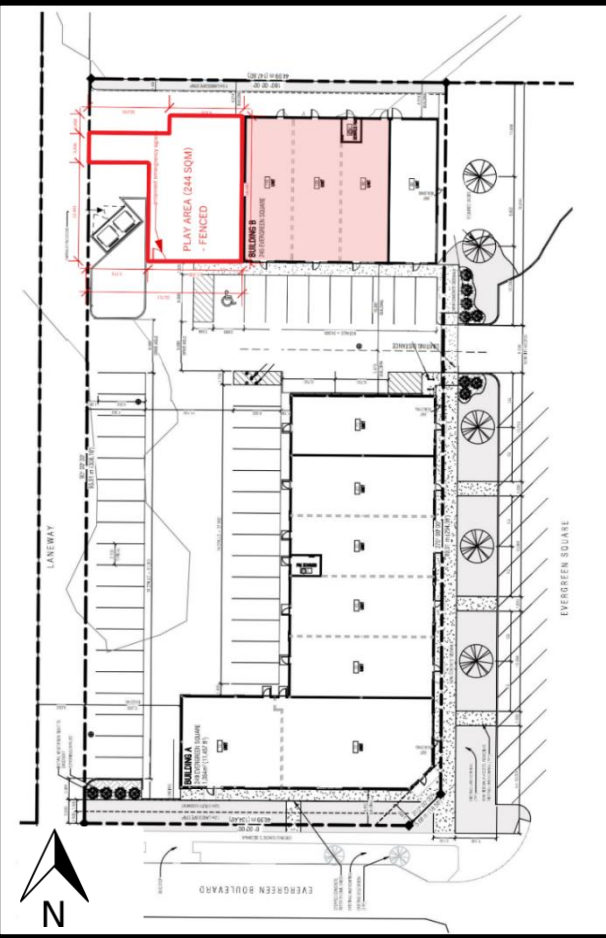
Zoning Bylaw Definition:

- “A "**day care**" means an establishment providing for the care, supervision, protection, or support of individuals of any age who require care or support on a regular, periodic, or temporary basis, and includes childcare centres as defined by The Child Care Act, 2014, but does not include the provision of overnight supervision.” (Section 2.0)

Zoning District:

- “The purpose of the **B1B District** is to facilitate mixed use development which may include a limited range of commercial and institutional uses, as well as medium density residential uses, that are generally compatible with residential land uses, and which are intended to serve the needs of residents within a neighbourhood.” (Section 10.2)
- A Daycare in the B1B District is listed as a Discretionary Use.

Site Plan – 245 Evergreen Square



Engagement Feedback

- Public Notice
 - Sent out on October 14, 2022, to neighbours, Councillor & Community Association
- What We've Heard:
 - Increase in traffic on Evergreen Sq. and surrounding roads.
 - Concerns about the distance to Funk Park.
 - Increase in noise from the on-site play area.
 - Location of the on-site play area adjacent to a laneway.
 - Increase to available parking congestion.
 - Proximity of the Day Care to the nearby restaurant establishment.

Message from the Applicant

Introduction



New Leaf

DAYCARE CENTRE

Message from the Applicant – Philosophy

- We believe in a society that provides an environment for each child to develop their abilities to meet life's challenges and opportunities in early childhood.
- We focus on providing our families with quality care and education to support children from three months to six years by engaging the parents in a day-to-day childcare plan.
- Continuous improvement/development of our educators.
- Our focus will align with the Canada Wide Childcare plan of the Federal Government to make access to quality childcare easy and affordable.



New Leaf
DAYCARE CENTRE

Message from the Applicant – Services

- **Basic Day Care Service**

- Our full-service childcare facility will primarily cater to families with children aged three months to six years (pre-kindergarten).
- Include English integration programs for Newcomers and families with English as a second language.

- **School Age Program**

- School-age programs supplement a family setting between school and home hours.

- **Summer Day Camps and Special Trips**

- We plan to add a series of half and full-day field trips, nature walks, rafting excursions, and library and planetarium visits.

- **Hours of Operation**

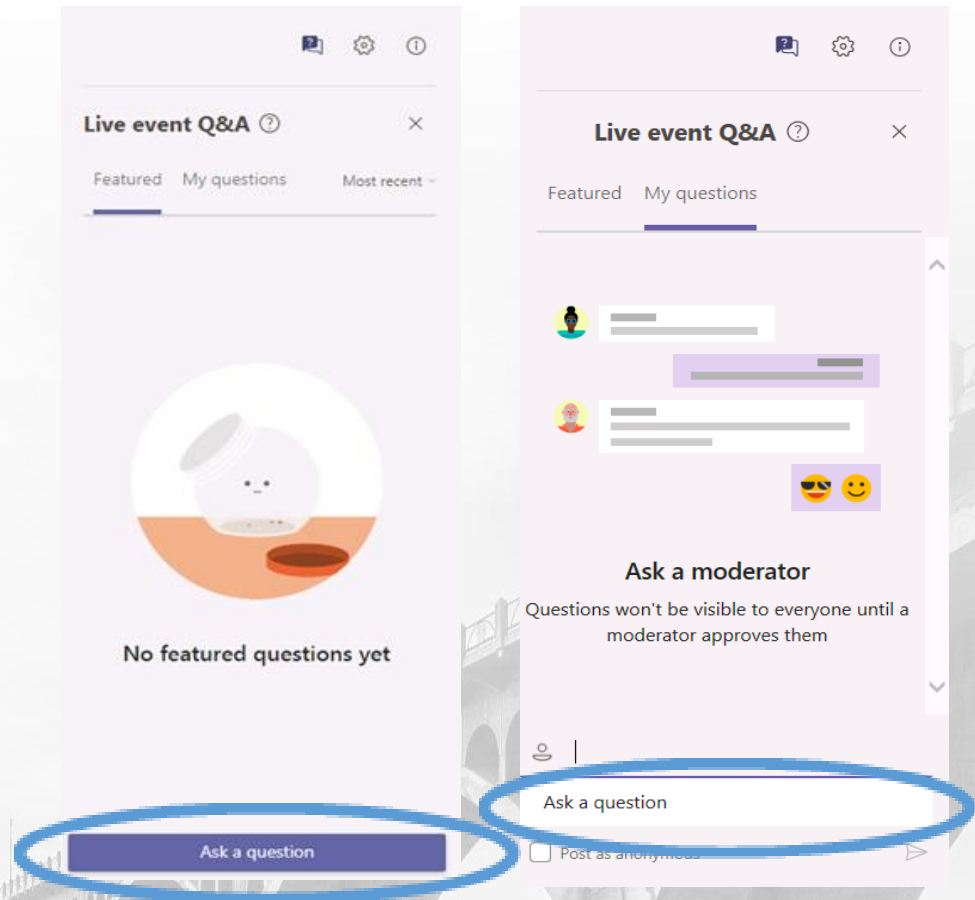
- 7:00 am to 5:30 pm



New Leaf
DAYCARE CENTRE

Q&A Session

- Questions welcome through the Teams Live meeting chat



Next Steps

- The Public Engagement window is being extended until 5:00pm on January 3rd, 2023. Comments, questions, and concerns can be submitted to:

tyler.kopp@saskatoon.ca

- Within the B1B District, the approving authority of a Daycare is delegated to the Development Officer. (Section 4.7.21)
- After the closure of the extended public engagement window, the application will be reviewed by the Development Officer.

Thank You

Thank you for participating in the Public Information Meeting.

Please follow the application Engage Page for updates at:

<https://www.saskatoon.ca/engage/245-evergreen-square>