

ONLINE CITIZEN BUDGET RESULTS

May 13 – June 25, 2016



City of Saskatoon



Online Budget Consultation Report

For the period May 13 to June 25, 2016

Prepared by Open North for: City of Saskatoon

2,633

Visitors

803

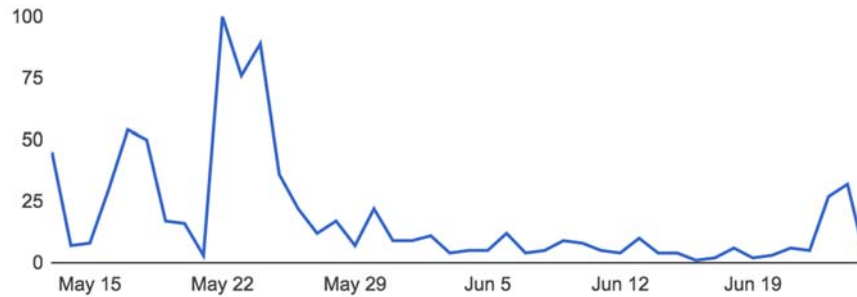
Responses

30.5% participation

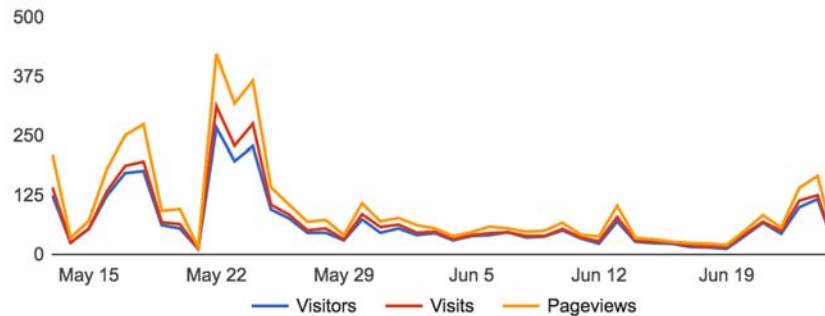
11 minutes

Median time to complete

Responses per day



Web visits per day

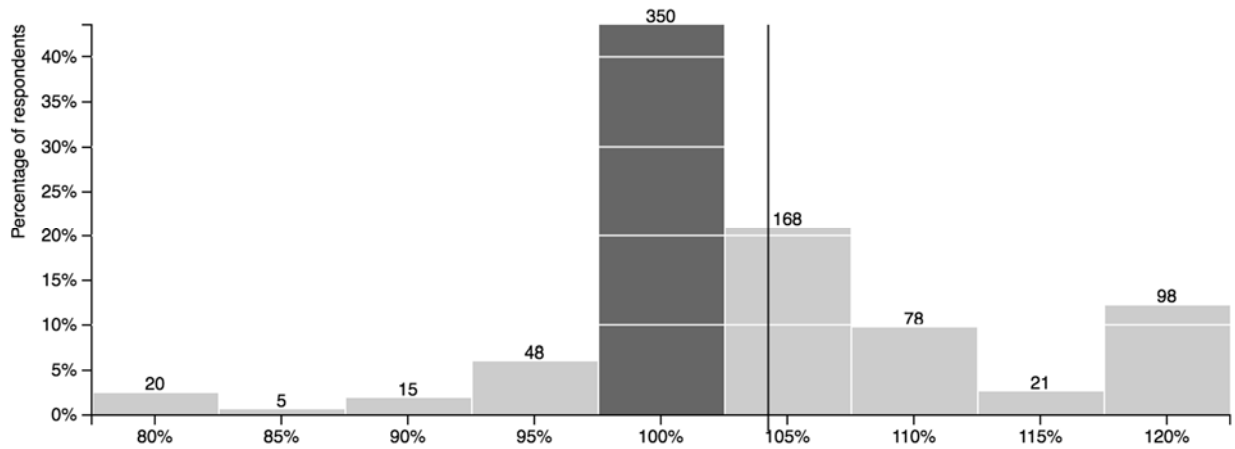


Web traffic sources



Road Maintenance

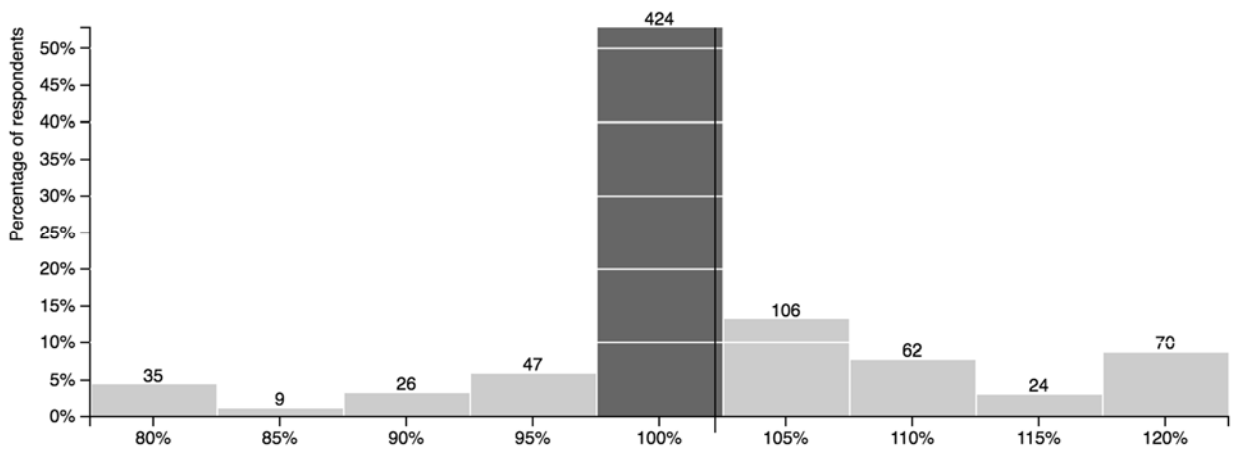
How would you adjust your property tax funding for Road Maintenance in the city?



45.45% of respondents support an average increase of 10.67% to Road Maintenance, while 10.96% of respondents support an average decrease of 9.83%. Overall, respondents support an **average increase of 3.77%** to Road Maintenance.

Snow & Ice Management

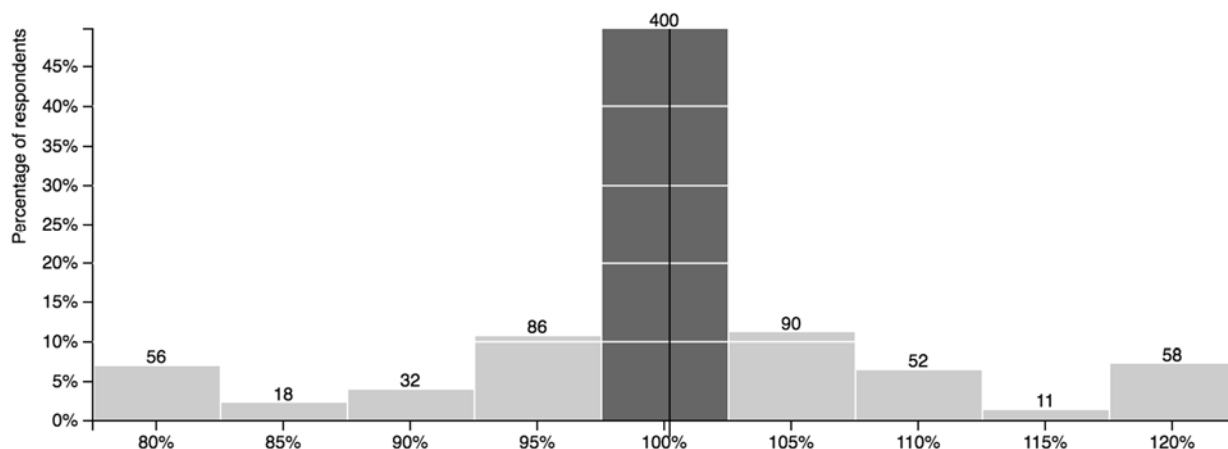
How would you adjust your property tax funding for Snow & Ice Management in the city?



32.63% of respondents support an average increase of 11.11% to Snow & Ice Management, while 14.57% of respondents support an average decrease of 14.57%. Overall, respondents support an **average increase of 1.97%** to Snow & Ice Management.

Traffic Management

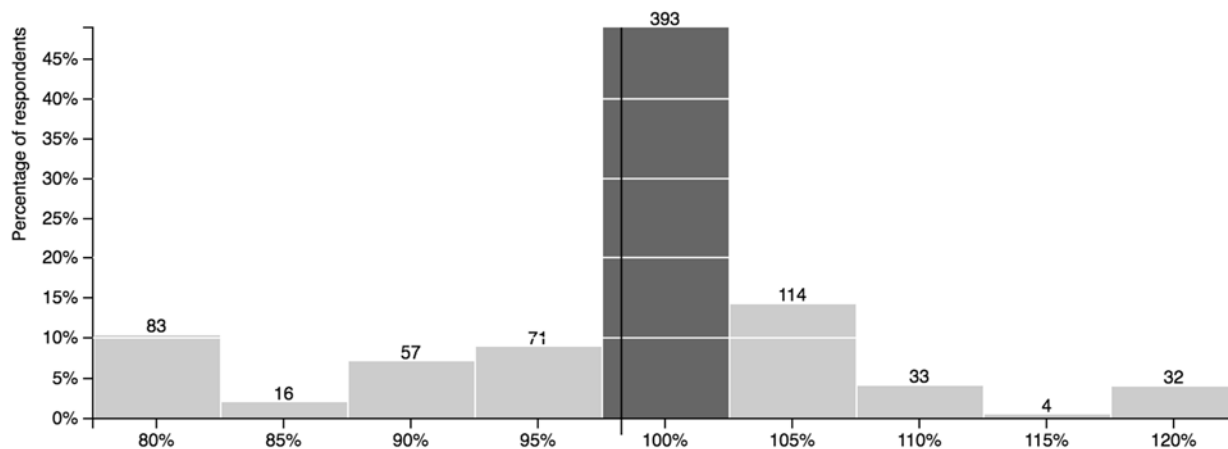
How would you adjust your property tax funding for Traffic Management in Saskatoon?



On average, respondents support the 2016 budget allocation for Traffic Management, with nearly half of respondents choosing not to change the budget.

Police

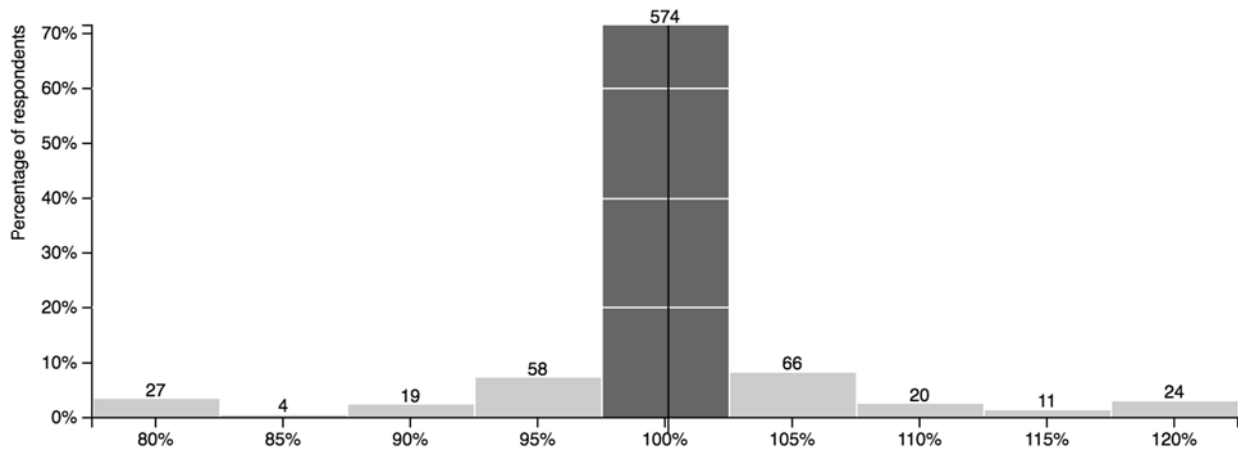
How would you adjust your property tax funding for the Saskatoon Police Service?



Nearly half of respondents chose not to change the budget for the Saskatoon Police Service, however 28.27% of respondents would reduce the allocation to this service by an average of 12.44%. Overall, respondents support an **average decrease of 1.53%** to Police Services.

Fire

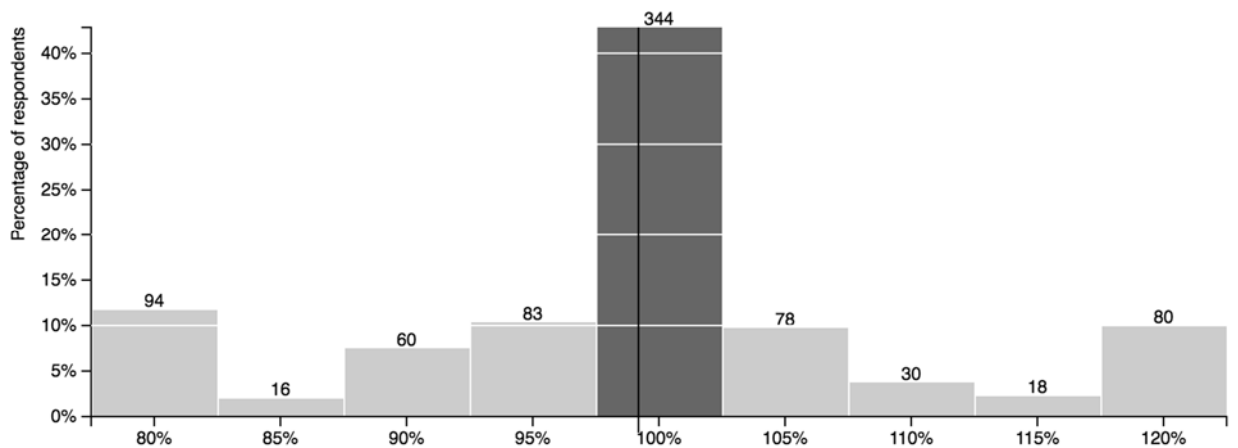
How would you adjust your property tax funding for the Saskatoon Fire Department?



On average, respondents support the 2016 budget allocation for the Saskatoon Fire Department, with an overwhelming 71.48% of respondents choosing not to change the budget.

Transit/Access Transit

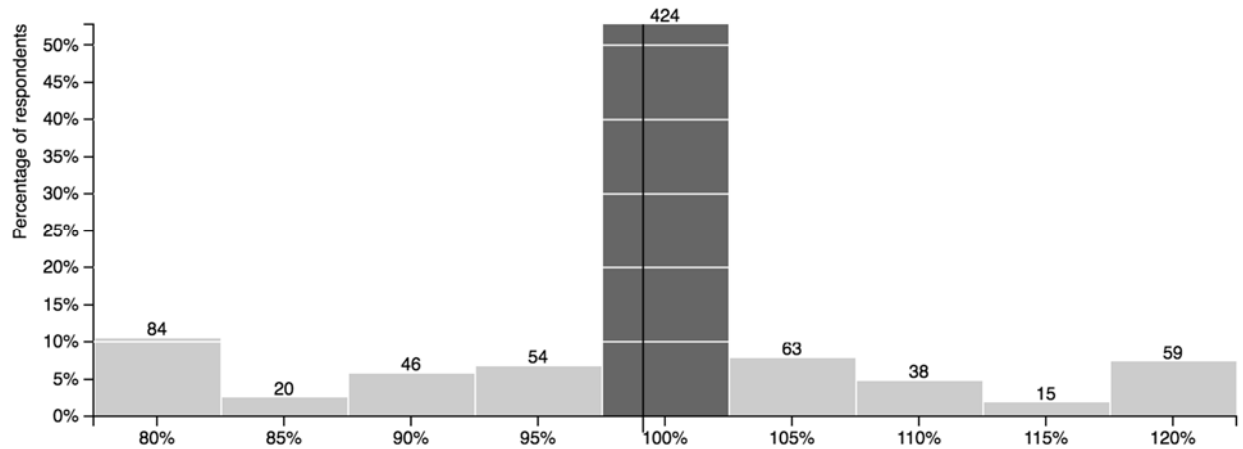
How would you adjust your property tax funding for Saskatoon Transit?



31.51% of respondents support a decrease while 26.65% of respondents support an increase to Saskatoon Transit. Overall, respondents support an **average decrease of 0.72%** for this service.

Planning for Growth & Development

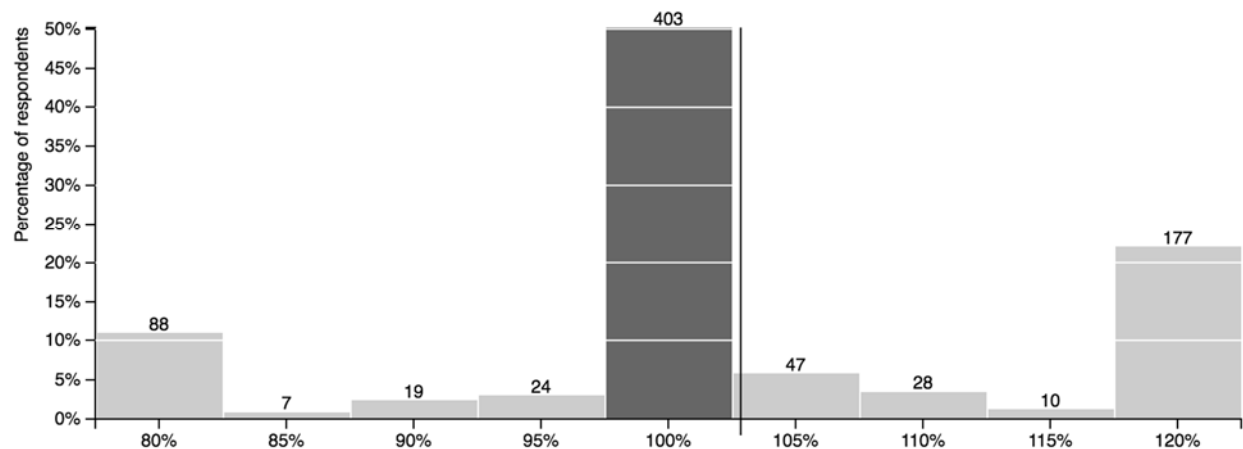
How would you adjust your property tax funding for Planning & Growth Development in Saskatoon?



Over half of respondents support the 2016 budget allocation for Planning for Growth & Development in Saskatoon. However, 10.46% of respondents support a large decrease to this service, resulting in support for **an average decrease of 0.76%** overall.

Community Grants

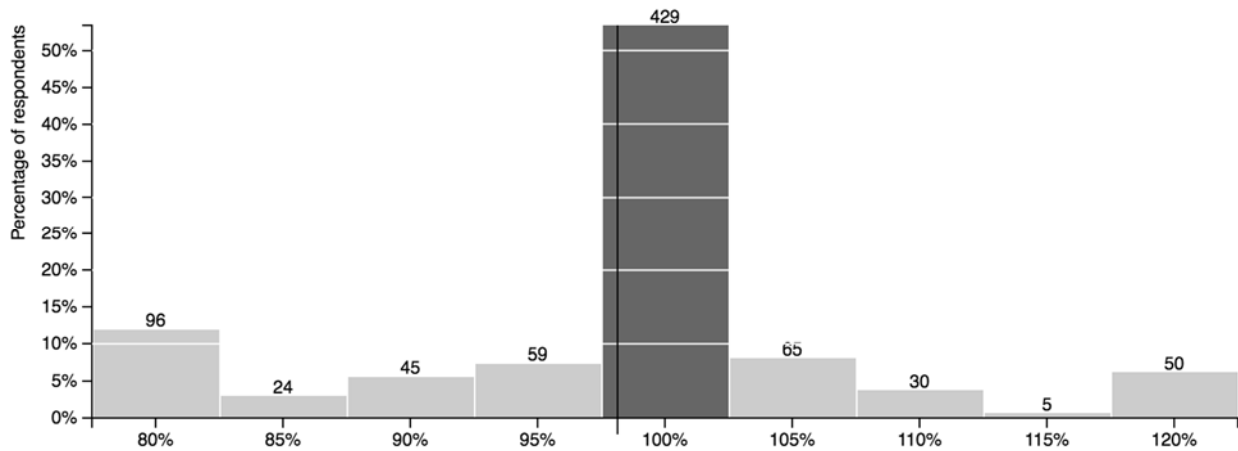
How would you adjust your property tax funding for Community Grants?



Half of respondents support the 2016 budget allocation for Community Grants while 22.04% of respondents support a 20% increase to this service, resulting in support for an **average increase of 2.53%** overall.

Affordable Housing

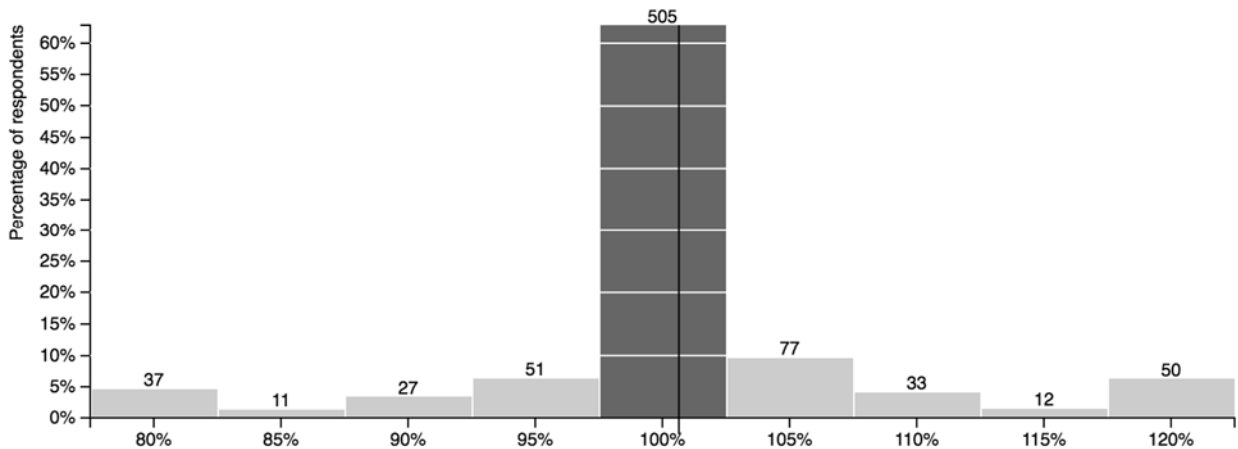
How would you adjust your property tax funding for Affordable Housing?



More than half of respondents chose not to change the budget for Affordable Housing. However, 27.90% of respondents support a decrease compared to only 18.68% of respondents supporting an increase, resulting in overall support for an **average decrease of 1.65%**.

Garbage & Waste Reduction

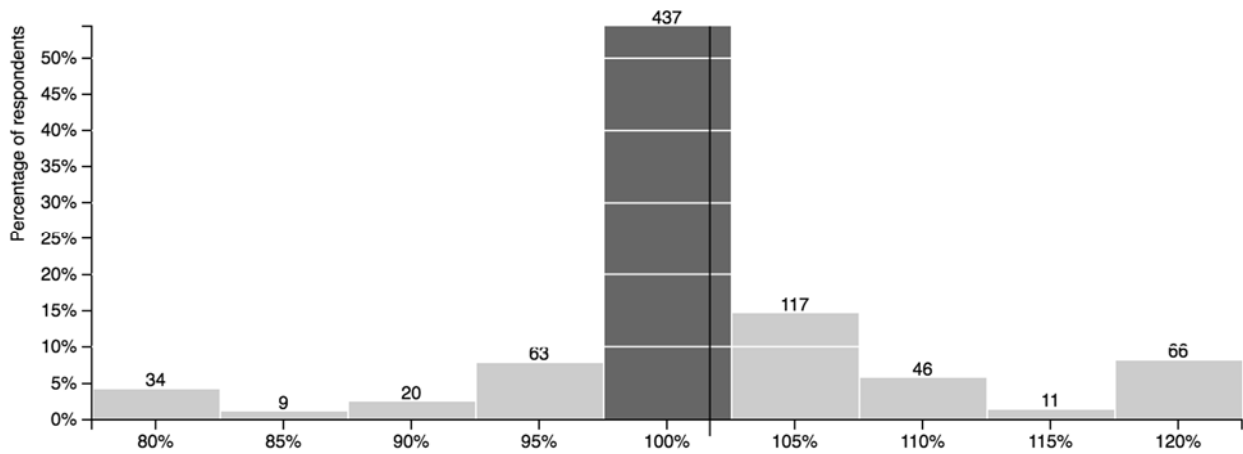
How would you adjust your property tax funding for Garbage & Waste Reduction programs and services in Saskatoon?



Respondents are mostly satisfied with the 2016 budget allocation for Garbage & Waste Reduction with 62.89% choosing not to change the budget. Overall, respondents support an **average increase of 0.58%** to this service.

Parks

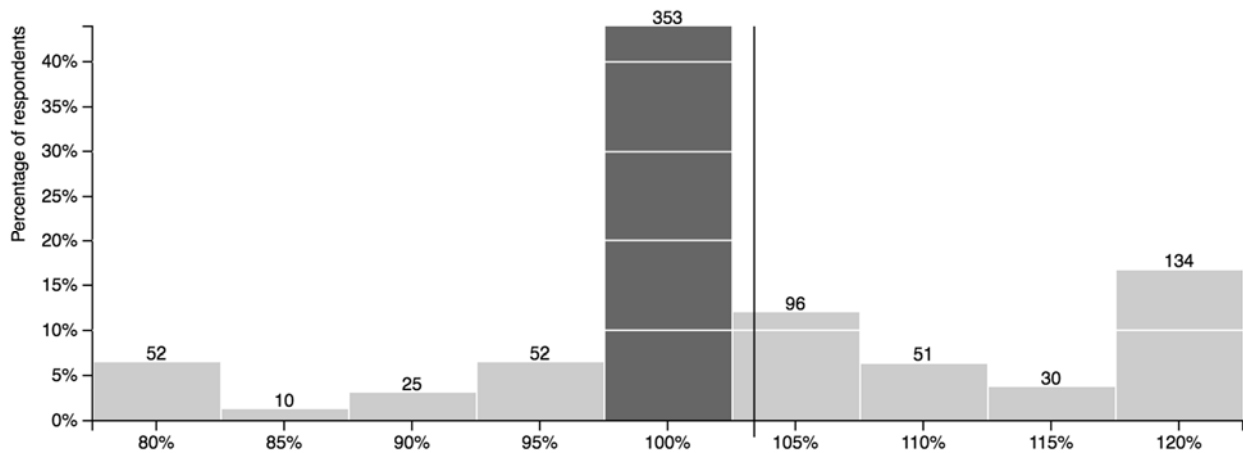
How would you adjust your property tax funding for the Parks program in Saskatoon?



More than half of respondents chose not to change the budget for the Parks program, however strong support (29.89% of respondents) for an increase results in support for an **average increase of 1.49%** to this service overall.

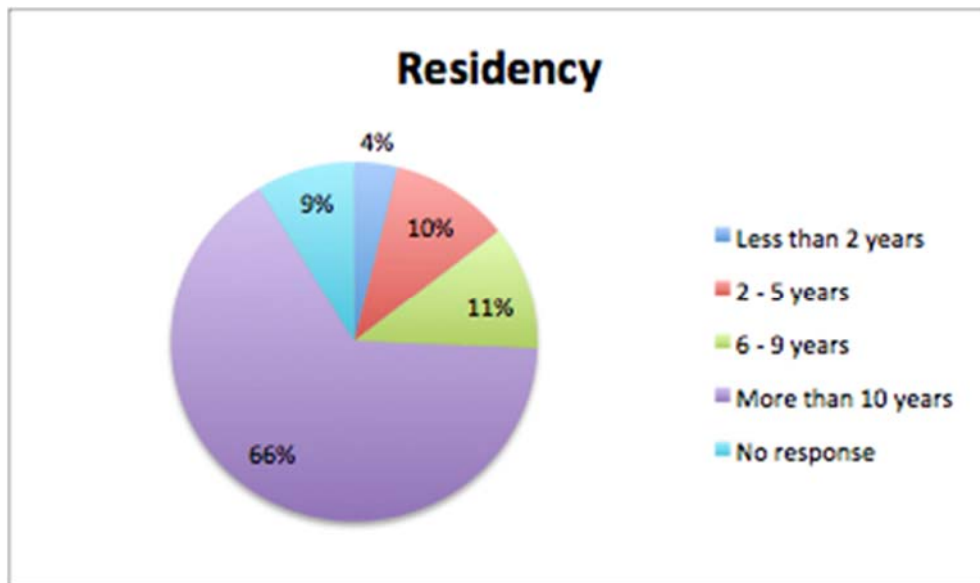
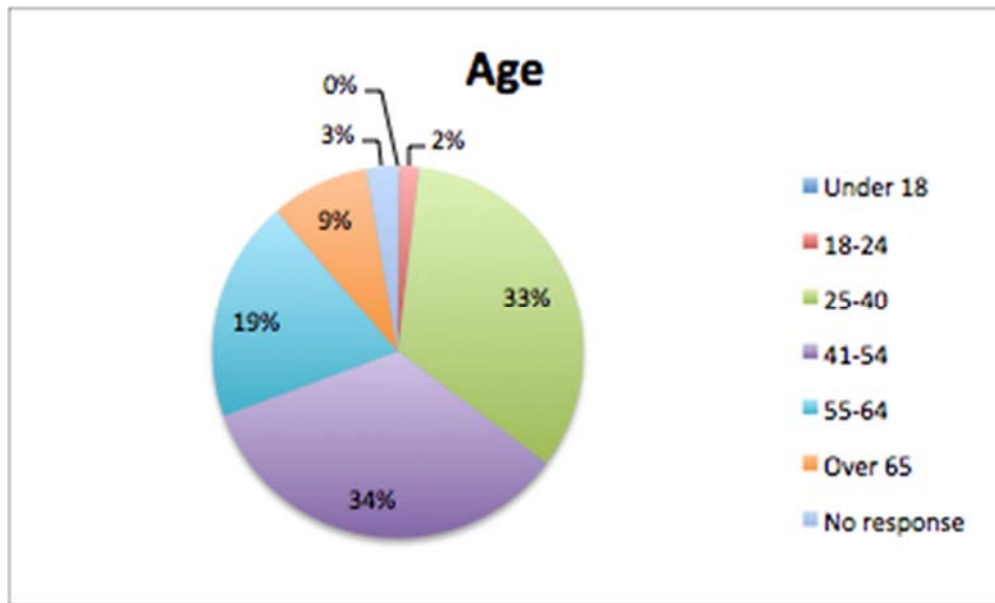
Recreation & Culture

How would you adjust your property tax funding for Recreation & Culture in Saskatoon?

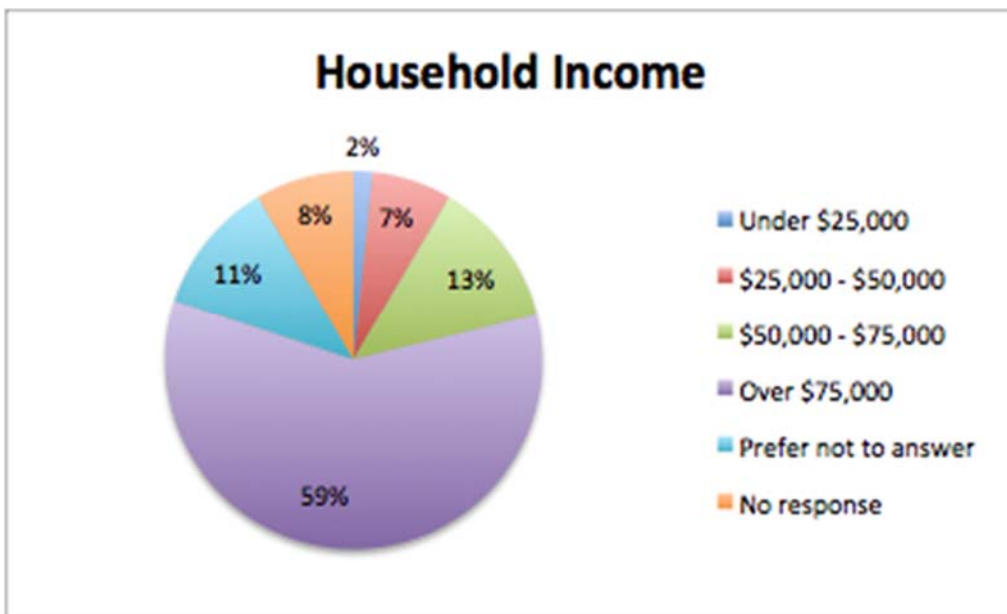
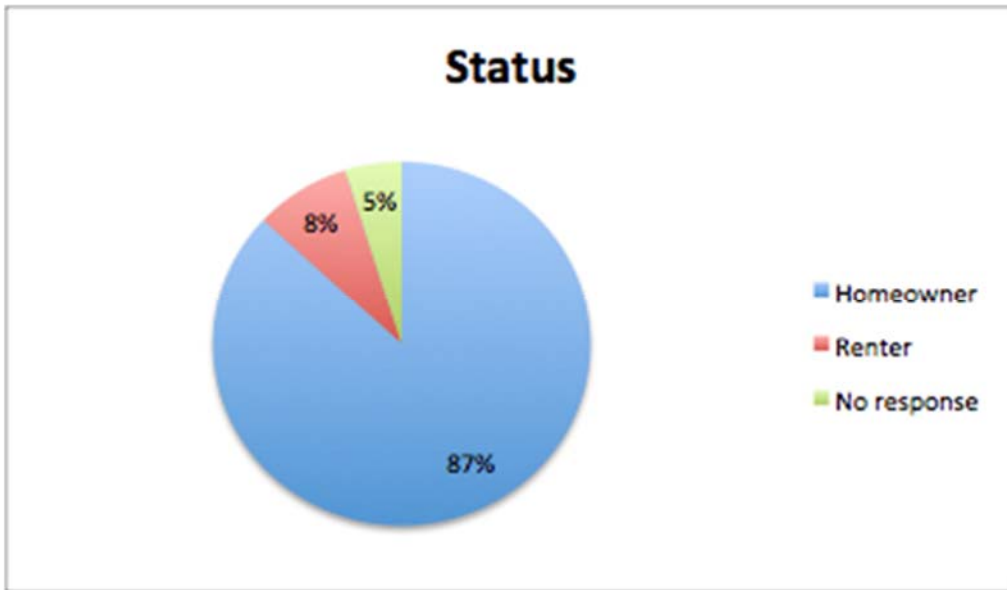


38.73% of respondents support an average increase of 13.25% to Recreation & Culture, while 23.91% support an average decrease of 12.23%. This results in overall support for an **average increase of 2.21%** to this service.

Demographics



The majority of respondents are at least 55 years old, with 47% of respondents 40 years old or less. The large majority of respondents (66%) are long time residents of Saskatoon, having lived in the City for more than 10 years.



An overwhelming majority (87%) of respondents are homeowners and more than half of respondents have a household income over \$75,000.

| Neighbourhood | # | Neighbourhood | # |
|-------------------------------|----------|------------------------------------|----------|
| Adelaide/Churchill | 18 | Lakewood Suburban Centre | 4 |
| Agriplace | 0 | Lawson Heights | 12 |
| Airport Business Area | 0 | Lawson Heights Suburban Centre | 0 |
| Airport Management Area | 3 | Marquis Industrial | 0 |
| Arbor Creek | 22 | Massey Place | 5 |
| Avalon | 7 | Mayfair | 11 |
| Blairmore Suburban Centre | 3 | Meadowgreen | 4 |
| Brevoort Park | 13 | Montgomery Place | 9 |
| Briarwood | 18 | Mount Royal | 6 |
| Buena Vista | 10 | North Industrial | 0 |
| Caswell Hill | 14 | North Park | 9 |
| Central Business District | 12 | Nutana | 42 |
| Central Industrial | 0 | Nutana Park | 8 |
| City Park | 21 | Nutana Suburban Centre | 1 |
| CN Industrial | 0 | Pacific Heights | 4 |
| College Park | 6 | Parkridge | 14 |
| College Park East | 14 | Pleasant Hill | 3 |
| Confederation Park | 12 | Queen Elizabeth | 10 |
| Confederation Suburban Centre | 0 | Richmond Heights | 4 |
| Dundonald | 10 | River Heights | 13 |
| Eastview | 18 | Riversdale | 6 |
| Erindale | 19 | Rosewood | 21 |
| Evergreen | 28 | Silverspring | 22 |
| Exhibition | 9 | Silverwood Heights | 26 |
| Fairhaven | 6 | South West Industrial | 0 |
| Forest Grove | 20 | Stonebridge | 44 |
| Gordie Howe Management Area | 0 | Sutherland | 9 |
| Greystone Heights | 6 | Sutherland Industrial | 0 |
| Grosvenor Park | 6 | The Willows | 3 |
| Hampton Village | 18 | U of S Lands Management Area | 1 |
| Haultain | 18 | U of S Lands South Management Area | 1 |
| Holiday Park | 4 | University Heights Suburban Centre | 6 |
| Holliston | 7 | Varsity View | 6 |
| Hudson Bay Industrial | 0 | West Industrial | 0 |
| Hudson Bay Park | 4 | Westmount | 4 |
| Kelsey - Woodlawn | 1 | Westview | 4 |
| King George | 5 | Wildwood | 20 |
| Lakeridge | 15 | Willowgrove | 41 |
| Lakeview | 21 | No response | 42 |

Annex A

| Service Category | No change |
|-----------------------------------|----------------------------|
| Traffic Management | No change from 2016 budget |
| Fire | No change from 2016 budget |
| Service Category | Invest more |
| Road Maintenance | Invest up to 4% more |
| Snow & Ice Management | Invest up to 2% more |
| Community Grants | Invest up to 3% more |
| Garbage & Waste Reduction | Invest up to 1% more |
| Parks | Invest over 1% more |
| Recreation & Culture | Invest over 2% more |
| Service Category | Invest less |
| Transit | Invest up to 1% less |
| Police | Invest up to 2% less |
| Planning for Growth & Development | Invest up to 1% less |
| Affordable Housing | Invest up to 2% less |