

Building: Mendel Art Gallery

Building Address: 950 Spadina Crescent East

Date: March 1, 2018

This building contains the following occurrences of asbestos containing material (ACM):

Location	Description	Characteristics	Management Plan
112 - Gallery 3, B11 - Storage Vault	Vertical Transite Pipe in the Northeast Corner - Rain Water Leader (RWL).	<ul style="list-style-type: none"> • 40% Chrysotile • 10% Crocidolite • Non-friable • Good condition • Low accessibility 	To be removed in Spring 2018 by Visco. Coordination with 21 days notice required.
B07 - Elevator Room	Electrical Components Brake Pad	<ul style="list-style-type: none"> • Suspect asbestos containing material • 70% Crocidolite • Non-friable • Moderate / Good condition • Low accessibility 	<p>Elevator currently energized.</p> <p>Electrical components and brake pads are to be disposed of as asbestos waste by abatement professional through the City of Saskatoon. Contact City when elevator is de-energized.</p> <p>Room locked, only accessible by City.</p>
128 - Conservatory	White Glazing Putting	<ul style="list-style-type: none"> • 1% Chrysotile • Non-friable • Good condition • Low accessibility 	<p>Inspect annually.</p> <p>Abatement to be performed by abatement professional through City of Saskatoon as a low risk process. Update expected 2018.</p>

The asbestos report is available on the City of Saskatoon Asbestos Registry: <https://www.saskatoon.ca/business-development/development-regulation/city-facility-reports>.

Do not disturb materials without proper training, equipment, and authorization.

- ✓ All known Asbestos Containing Material is labelled, inspected, and maintained in good condition. The purpose of taking these actions is to prevent asbestos from becoming an airborne hazard. Intact and undisturbed asbestos presents no direct health hazard. Asbestos fibres must be inhaled to cause diseases.

Report any damaged or suspect material to the Prime Contractor and City of Saskatoon immediately. For information, contact Facilities & Fleet Management at **306-975-3300**.

BERSCH CONSULTING LTD.

January 31, 2018

City of Saskatoon
1101 Avenue P North
Saskatoon, SK
S7L 7K6

ATTENTION: Hazel Fernandez

SUBJECT: Bulk Sample Analysis Report Mendel Art Gallery

Please find attached the laboratory results for the bulk samples collected from the Mendel Art Gallery in Saskatoon, Sk. The samples were analyzed for the identification of asbestos. Asbestos was detected within the samples.

The results for the samples submitted were obtained by examination in accordance with the current USEPA 600/R-93/116 Method for the analysis of asbestos in building materials using polarized light microscopy and dispersion staining techniques. The detection limit of this method is listed as less than 1% by volume.

This test report relates only to the materials sent for examination and any use or extension of the information by the client of these results is the responsibility of the client.

If any questions arise on the results of the attached information, please contact our office. Thank you for this opportunity of service.

Sincerely,



Brad Berschiminsky
Bersch Consulting Ltd.
B67BLA30H mendel

Bersch Consulting Ltd.244-2002 Quebec Avenue
Saskatoon, SK S7K 1W4

B67BAA30H

BULK SAMPLE ANALYSIS REPORT**PROJECT NO: B67.18**
CLIENT: CITY OF SASKATOON
CONTACT: HAZEL FERNANDEZ
LOCATION: MENDEL ART GALLERY

NO.	DATE	SAMPLE INFORMATION	ASBESTOS	%	ANALYST
1	19-Jan-18	Rm 102- Gift Shop- Floor Tile Mastic	Chrysotile	3%	EMSL
2	19-Jan-18	Rm 117- Tea Salon- Floor Tile Mastic	Chrysotile	5%	EMSL
3	19-Jan-18	B03- Auditorium- Floor Tile Mastic	Chrysotile	5%	EMSL
4	19-Jan-18	B17- Offices- Floor Tile Mastic	Chrysotile	5%	EMSL
5	19-Jan-18	B20-B23- Office- Floor Tile Mastic	Chrysotile	5%	EMSL
6	23-Jan-18	B03b- Beneath Sheet Flooring- Black Floor Tile Mastic	No Asbestos Detected		EMSL
7	23-Jan-18	B18e- Beneath Sheet Flooring- Beige Mastic	No Asbestos Detected		EMSL
8	23-Jan-18	B14- North Wall- Packing Around Duct	Chrysotile	25%	EMSL
9	23-Jan-18	B03- Precast Ceiling- Stipple Overspray	Chrysotile	10%	EMSL

Bersch Consulting Ltd.244-2002 Quebec Avenue
Saskatoon, SK S7K 1W4

B67BAA30H

BULK SAMPLE ANALYSIS REPORT**PROJECT NO: B67.18**
CLIENT: CITY OF SASKATOON
CONTACT: HAZEL FERNANDEZ
LOCATION: MENDEL ART GALLERY

NO.	DATE	SAMPLE INFORMATION	ASBESTOS	%	ANALYST
10	30-Jan-18	Rm 102- Gift Shop- Floor Tile Mastic	Chrysotile	1%	EMSL
11	30-Jan-18	Rm 119- Remaining Floor Tile Mastic	Chrysotile	2%	EMSL
12	30-Jan-18	Rm 119- Black Coating at Supply Air	No Asbestos Detected		EMSL
13	30-Jan-18	Rm 122- Adj. South Window- Mortar/Concrete Floor	No Asbestos Detected		EMSL
14	30-Jan-18	Rm 101- Lobby- Concrete/Mortar Floor beneath Ceramic Tile	No Asbestos Detected		EMSL
15	30-Jan-18	B02 Ceiling- Cork Mastic	Chrysotile	2%	EMSL
16a	30-Jan-18	B01 Floor- Mortar	No Asbestos Detected		EMSL
16b	30-Jan-18	B01 Floor- Black Mastic on Mortar	Chrysotile	2%	EMSL
17a	30-Jan-18	Rm 123 & 119 Doorway- Mortar	No Asbestos Detected		EMSL
17b	30-Jan-18	Rm 123 & 119 Doorway- Black Mastic on Mortar	Chrysotile	1%	EMSL

Number	Area	Elements	Sub Elements	Material Description	Suspect	Type	Asbestos	ACM Product	Sample Location	Renovation	Action	Removed?	Comments
B01	Lobby	Ceiling	Ceiling Texture	Stipple Texture	Yes	Chrysotile	15%	Stipple Ceiling Texture	B01 - Lobby - Stipple Textured Ceiling Material	Yes	Remove	Removed	
B01	Lobby	Ceiling	Base Coat	Plaster	Yes	No Asbestos Detected			B03 - Ceiling Plaster from ceiling space	Yes	Demo		Plaster may be demoed separately or in conjunction with the Texture Ceiling.
B01	Lobby	Ceiling Space	Ceiling	Pre-Formed Concrete	No	No Asbestos Detected							
B01	Lobby	Walls	All	Drywall Mud Compound	Yes	No Asbestos Detected			B01 -Compilation of Drywall Mud from Walls- Joint Compound				All walls in the area are composed of drywall with seams finished with tape and drywall mud compound.
B01	Lobby	Walls	All	Drywall Mud Compound	Yes	No Asbestos Detected			B01 -Compilation of Drywall Mud from Walls- Skim Coat				All walls in the area are composed of drywall with seams finished with tape and drywall mud compound.
B01	Lobby	Walls	Skim / Base Coat	Plaster	No	No Asbestos Detected			B01 - Plaster/Skim Coat from West Wall of Storage Room adjacent B04	Yes	Demo		The west wall of the storage room on the west side of B01 adjacent mechanical room B04.
B01	Lobby	Floor	Tile	Ceramic Tile	No								
B01	Lobby	Floor	Final Layer	Concrete	No								
B02	Project or Room	Ceiling Space	Duct	Debris	No	No Asbestos Detected			B02 Projector Room - Debris Inside Of Ducting At Access Hatch				
B02	Project or Room	Ceiling	Electrical	ACM Heat Shield	Yes	No Asbestos Detected				Yes	Remove		The heat shield inside the light fixture globe is non acm.
B02	Project or Room	Ceiling	Ceiling Surface	Cork Material	Yes	No Asbestos Detected			Projector Room B02 - Cork Material On Walls				
B02	Project or Room	Walls	All	Cork Material	Yes	No Asbestos Detected			Projector Room B02 - Cork Material On Walls				
B02	Project or Room	Walls		Cinderblock	No								
B02	Project or Room	Walls		Concrete	No								
B02	Project or Room	Floor	Tile	9" x 9" Crème With Brown Streak Floor Tile	Yes	Chrysotile	7%	Vinyl Asbestos Tile	Projector Room B02 - 9" x 9" Crème With Brown Streak Floor Tile	Yes	Manage		

Number	Area	Elements	Sub Elements	Material Description	Suspect	Type	Asbestos	ACM Product	Sample Location	Renovation	Action	Removed?	Comments
B02	Project or Room	Floor	Floor Mastic	Floor Tile Mastic	Yes	Chrysotile	2%	Floor Tile Mastic	119 - 9" x 9" Crème With Brown Streak Floor Tile Mastic	Yes	Manage		
B02	Project or Room	Floor	Final Layer	Concrete	No								
B03	Auditorium	Ceiling Space	Ceiling	Pre-Formed Concrete	No								
B03	Auditorium	Ceiling Space	Mechanical	Duct Mastic	Yes	Chrysotile	3%	Duct Mastic	119 - Duct Mastic From Overhead Duct	Yes	Remove		Duct Mastic on duct in ceiling space
B03	Auditorium	Ceiling	Base Coat	Plaster	Yes	No Asbestos Detected			B03 - Ceiling Plaster from ceiling space	Yes	Demo		Plaster may be demoed separately or in conjunction with the Texture Ceiling.
B03	Auditorium	Ceiling Surface	Ceiling Texture	Stipple Texture	Yes	Chrysotile	15%	Stipple Ceiling Texture	B01 - Lobby - Stipple Textured Ceiling Material	Yes	Remove		
B03	Auditorium	Walls	All	Drywall Mud Compound	Yes	No Asbestos Detected			B03b -Compilation of Drywall Mud Compound From Walls				
B03	Auditorium	Walls	East, West	Cinderblock	No								The East and West walls are comprised of a false wall in front of the cinderblock wall and concrete foundation. The false wall consists of 1 layer of drywall, burlap and 3/4-inch plywood sheeting.
B03	Auditorium	Floor	Tile	9" x 9" Crème With Brown Streak Floor Tile	Yes	Chrysotile	7%	Vinyl Asbestos Tile	Projector Room B02 - 9" x 9" Crème With Brown Streak Floor Tile	Yes	Remove		Flooring runs underneath the wall between B03 and B03b.
B03	Auditorium	Floor	Floor Mastic	Floor Tile Mastic	Yes	Chrysotile	2%	Floor Tile Mastic	119 - 9" x 9" Crème With Brown Streak Floor Tile Mastic	Yes	Remove		
B03	Auditorium	Floor	Final Layer	Concrete	No								
B03b	Library Room	Ceiling Space	Ceiling	Pre-Formed Concrete	No								
B03b	Library Room	Ceiling Space	Mechanical	Duct Mastic	Yes	Chrysotile	3%	Duct Mastic	119 - Duct Mastic From Overhead Duct	Yes	Remove		Duct Mastic on duct in ceiling space
B03b	Library Room	Ceiling Space	Base Coat	Plaster	Yes	No Asbestos Detected			B03 - Ceiling Plaster from ceiling space	Yes	Demo		Plaster may be demoed separately or in conjunction with the Texture Ceiling.
B03b	Library Room	Ceiling	Ceiling Texture	Stipple Texture	Yes	Chrysotile	15%	Stipple Ceiling Texture	B01 - Lobby - Stipple Textured Ceiling Material	Yes	Remove		

Number	Area	Elements	Sub Elements	Material Description	Suspect	Type	Asbestos	ACM Product	Sample Location	Renovation	Action	Removed?	Comments
B03b	Library Room	Walls	All	Drywall Mud Compound	Yes	No Asbestos Detected			B03b -Compilation of Drywall Mud Compound From Walls- Joint Compound				
B03b	Library Room	Walls	All	Drywall Mud Compound	Yes	No Asbestos Detected			B03b -Compilation of Drywall Mud Compound From Walls- Skim Coat				
B03b	Library Room	Walls	East, West	Cinderblock	No								The East and West walls are comprised of a false wall in front of the cinderblock wall and concrete foundation. The false wall consists of 1 layer of drywall, burlap and 3/4-inch plywood sheeting.
B03b	Library Room	Floor	Tile	9" x 9" Crème With Brown Streak Floor Tile	Yes	Chrysotile	7%	Vinyl Asbestos Tile	Projector Room B02 - 9" x 9" Crème With Brown Streak Floor Tile	Yes	Remove		Flooring runs underneath the wall between B03 and B03b.
B03b	Library Room	Floor	Floor Mastic	Floor Tile Mastic	Yes	Chrysotile	2%	Floor Tile Mastic	119 - 9" x 9" Crème With Brown Streak Floor Tile Mastic	Yes	Remove		
B03b	Library Room	Floor	Final Layer	Concrete	No								
B04	Mechanical Room #1	Mechanical		Boiler Refractory	Yes	No Asbestos Detected			Mech. Rm. B04 - Refractory in Rear Turn Chamber of the Boiler	No			
B04	Mechanical Room #1	Mechanical		Boiler Refractory	Yes	No Asbestos Detected			Mech. Rm. B04 - Thin Grey Coating on the Boiler Interior End Door	No			
B04	Mechanical Room #1	Mechanical	Mud Compound	Insulation	Yes	Chrysotile	40%	Mud Compound	Mech. Rm. B04 Auditorium Air Handling Unit - Access Hatch Mud/Insulation	Yes	Remove		
B04	Mechanical Room #1	Mechanical	Mud Compound	Insulation	Yes	Chrysotile	70%	Mud Compound	Mech. Rm. B04 Auditorium Air Handling Unit - Top Side Adjacent Wiring Mud/Insulation.(Plywood Is Covering)	Yes	Remove		
B04	Mechanical Room #1	Mechanical		Mud Compound	Yes	Chrysotile	40%	Mud Compound	Mech. Rm. B04 - Mud/Insulation On Overhead Ducting Adjacent, Blue Boiler	Yes	Remove		

Number	Area	Elements	Sub Elements	Material Description	Suspect	Type	Asbestos	ACM Product	Sample Location	Renovation	Action	Removed?	Comments
B04	Mechanical Room #1	Mechanical		Mud Compound	Yes	Chrysotile	75%	Mud Compound	Mech. Rm. B04 - Mud/Insulation On Overhead Ducting Above Dials At Back Blue Boiler	Yes	Remove		
B04	Mechanical Room #1	Mechanical		Mud Compound	Yes	Chrysotile	60%	Mud Compound	Mech. Rm. B04 - Mud/Insulation On Overhead Ducting At Rear Of Blue Boiler Adjacent Electrical Box	Yes	Remove		
B04	Mechanical Room #1	Mechanical		Pipefitting	Yes	Chrysotile	70%	Pipeline Fitting Compound	Mech. Rm. B04 - Medium Pipefitting Compound At Back Of Auditorium AHU.	Yes	Remove		
B04	Mechanical Room #1	Mechanical		Pipe Insulation	Yes	No Asbestos Detected			Mech. Rm. B04 - Lineal Pipe Insulation At Back Of Auditorium AHU				
B04	Mechanical Room #1	Mechanical		Pipefitting	Yes	Chrysotile	60%	Pipeline Fitting Compound	Mech. Rm. B04 - Small Pipefitting Compound On CHW Supply Behind Silver Gauge, Auditorium Control.	Yes	Remove		
B04	Mechanical Room #1	Mechanical		Felt Lining	Yes	No Asbestos Detected			Mech. Rm. B04 - Felt Lining Inside AHU #1				
B04	Mechanical Room #1	Mechanical		Debris	Yes	No Asbestos Detected			Mech. Rm. B04 - Loose Debris Inside Auditorium AHU - Front Access Hatch				
B04	Mechanical Room #1	Mechanical		Lineal Pipe Insulation	Yes	No Asbestos Detected			Mech. Rm. B04 - Lineal Pipe Insulation On Red Line Adjacent Exit Door N.E. Corner				
B04	Mechanical Room #1	Mechanical		Tar	Yes	No Asbestos Detected			Mech. Rm. B04 - Tar Behind Canvas North Side Of Auditorium AHU				
B04	Mechanical Room #1	Mechanical		Mud Compound	Yes	Chrysotile	60%	Mud Compound	Mech. Rm. B04 - Mud Behind Canvas North Side Of Auditorium AHU	Yes	Remove		

Number	Area	Elements	Sub Elements	Material Description	Suspect	Type	Asbestos	ACM Product	Sample Location	Renovation	Action	Removed?	Comments
B04	Mechanical Room #1	Mechanical		Pipefitting	Yes	Chrysotile	70%	Pipeline Fitting Compound	Mech. Rm. B04 - Small Pipefitting Compound On Red Line Adjacent Front Access Hatch Auditorium AHU	Yes	Remove		
B04	Mechanical Room #1	Mechanical		Expansion Gasket	Yes	No Asbestos Detected			Mech. Rm. B04 - Expansion Gasket Material South Side Auditorium AHU				
B04	Mechanical Room #1	Mechanical		Pipefitting	Yes	No Asbestos Detected			Mech. Rm. B04 - Small Pipefitting Compound Above 3 Metal Access Hatches South Side Auditorium AHU				
B04	Mechanical Room #1	Mechanical		Pipe Insulation	Yes	No Asbestos Detected			Mech. Rm. B04 - Lineal Pipe Insulation Along Back East Wall Adjacent Blue Filter				
B04	Mechanical Room #1	Mechanical		Pipe Insulation	Yes	No Asbestos Detected			Mech. Rm. B04 - Lineal Pipe Insulation Adjacent HP2				
B04	Mechanical Room #1	Mechanical		Pipe Insulation	Yes	No Asbestos Detected			Mech. Rm. B04 - Lineal Pipe Insulation On HWR Line				
B04	Mechanical Room #1	Mechanical		Pipe Insulation	Yes	No Asbestos Detected			Mech. Rm. B04 - Lineal Pipe Insulation On HWS Line				
B04	Mechanical Room #1	Mechanical		Boiler Breaching	Yes	Chrysotile	70%	Lineal Pipeline Insulation	Mech. Rm. B04 - Boiler #1 Breaching At 45 Degree Fitting Above Chiller.	Yes	Remove		
B04	Mechanical Room #1	Mechanical		Pipe Insulation	Yes	No Asbestos Detected			Mech. Rm. B04 - Lineal Pipe Insulation Adjacent "Panel H"				
B04	Mechanical Room #1	Mechanical		Mud Compound	Yes	Chrysotile	70%	Mud Compound	Mech. Rm. B04 - Mud Compound On Medium Flange Above Middle Of Boiler #1	Yes	Remove		

Number	Area	Elements	Sub Elements	Material Description	Suspect	Type	Asbestos	ACM Product	Sample Location	Renovation	Action	Removed?	Comments
B04	Mechanical Room #1	Mechanical		Mud Compound	Yes	Chrysotile	40%	Mud Compound	Mech. Rm. B04 - Mud Compound On Hanger Above Middle Of Boiler #1	Yes	Remove		
B04	Mechanical Room #1	Mechanical		Tar	Yes	No Asbestos Detected			Mech. Rm. B04 - Tar Behind Canvas On Large Duct Overhead "Mag Chiller" Panel				
B04	Mechanical Room #1	Mechanical		Mud Compound	Yes	Chrysotile	50%	Mud Compound	Mech. Rm. B04 - Mud Behind Canvas Bottom Of AHU #1 Adjacent Green Panel	Yes	Remove		
B04	Mechanical Room #1	Mechanical		Pipefitting	Yes	Chrysotile	75%	Pipeline Fitting Compound	Mech. Rm. B04 - Medium Pipe Fitting Compound Behind AHU #1 West Wall	Yes	Remove		
B04	Mechanical Room #1	Mechanical		Pipefitting	Yes	Chrysotile	60%	Pipeline Fitting Compound	Mech. Rm. B04 - Medium Pipe Fitting Compound On Red Line Overhead Adjacent "Mag Chiller" Panel	Yes	Remove		
B04	Mechanical Room #1	Mechanical		Duct Mastic	Yes	Chrysotile	3%	Duct Mastic	119 - Duct Mastic From Overhead Duct	Yes	Remove		Duct Mastic was found on exposed ducts throughout the mechanical room.
B04	Mechanical Room #1	Ceiling	Ceiling Surface	Pre-Formed Concrete	No								
B04	Mechanical Room #1	Ceiling		Spray-Applied Fireproofing	Yes	Amosite	60%	Spray-Applied Fireproofing	B29 - Spray-Applied Fireproofing On The Ceiling.	Yes	Remove		HEPA Vacuum the remnants along the south portion of the ceiling above the ducting. Spray-applied fireproofing remnants were observed in the concrete deck joints.
B04	Mechanical Room #1	Walls	North, South, East	Cinderblock	No								
B04	Mechanical Room #1	Walls	West	Concrete	No								

Number	Area	Elements	Sub Elements	Material Description	Suspect	Type	Asbestos	ACM Product	Sample Location	Renovation	Action	Removed?	Comments
B04	Mechanical Room #1	Floor	Final Layer	Concrete	No								
B05	Framing Shop	Ceiling Space	Ceiling	Pre-Formed Concrete	No								
B05	Framing Shop	Ceiling Space	Mechanical	Pipe Fitting Compound	Yes	Chrysotile	70%	Pipeline Fitting Compound	Mech. Rm. B04 - Small Pipefitting Compound On Red Line Adjacent Front Access Hatch Auditorium AHU	Yes	Remove		Fittings above suspended ceiling at South Wall, and two fittings located on the rad heater. Fittings are labelled with red dot.
B05	Framing Shop	Ceiling Space	Mechanical	3in od Lineal Pipe Insulation	No								Pipe Insulation is composed of fiberglass
B05	Framing Shop	Ceiling Space	Mechanical	6in od Lineal Pipe Insulation	No								Pipe Insulation is composed of fiberglass
B05	Framing Shop	Ceiling Space	Mechanical	Duct Mastic	Yes	Chrysotile	3%	Duct Mastic	119 - Duct Mastic From Overhead Duct	Yes	Remove		
B05	Framing Shop	Ceiling	Ceiling Surface	2x4 Pinhole Ceiling Tile	Yes	No Asbestos Detected			B05 Framing Shop - 2' x 4' Ceiling Tile 2 Pinhole Pattern	Yes	Remove		
B05	Framing Shop	Ceiling	Ceiling Surface	2x4 Pinhole/Gash Ceiling Tile	Yes	No Asbestos Detected			B18a - 2'x4' Pinhole Gash Ceiling Tile	Yes	Remove		
B05	Framing Shop	Walls	North, South, East	Cinderblock	No					Yes	Demo		Remove the applicable walls.
B05	Framing Shop	Walls	West	Plaster	Yes	No Asbestos Detected			B05 West Wall White Top Coat				
B05	Framing Shop	Walls	West	Drywall Mud Compound	Yes	No Asbestos Detected			B05 West Wall Base Coat Beneath White Top Coat				
B05	Framing Shop	Walls	South	3in od Lineal Pipe Insulation	No								2 vertical plumbing stacks insulated with fiberglass insulation on south wall.
B05	Framing Shop	Walls	East	Peg Board	No								

Number	Area	Elements	Sub Elements	Material Description	Susp ect	Type	Asbestos	ACM Product	Sample Location	Renovation	Action	Removed?	Comments
B05	Framing Shop	Floor	Carpet	Gray Carpet	No								
B05	Framing Shop	Floor	Final Layer	Concrete	No								
B06	Work Shop	Ceiling	Ceiling Surface	Pre-Formed Concrete	No								
B06	Work Shop	Overhead	Plumbing	Pipe Fitting Compound	Yes	Chrysotile	70%	Pipeline Fitting Compound	B06 Workshop - Small Pipeline Fitting Compound Northwest Corner	Yes	Remove		
B06	Work Shop	Overhead	Mechanical	Fire- Stop	Yes	Chrysotile	40%	Fire-Stop Material	B06 Workshop - Fire-Stop Material At Pipe Penetration On North Wall	Yes	Remove		Located overhead along centre of the North wall. The material is the same material as the pipeline fitting.
B06	Work Shop	Overhead	Mechanical	Duct Mastic	Yes	Chrysotile	3%	Duct Mastic	119 - Duct Mastic From Overhead Duct	Yes	Remove		
B06	Work Shop	Overhead	Plumbing	6in od Lineal Pipe Insulation	No								
B06	Work Shop	Overhead	Plumbing	3in od Lineal Pipe Insulation	No								
B06	Work Shop	Overhead	Plumbing	1.5 in od Lineal Pipe Insulation	No								
B06	Work Shop	Ceiling	Final Layer	Concrete	No								
B06	Work Shop	Walls	North, South, East	Cinderblock	No								
B06	Work Shop	Walls	West	Concrete	No								
B06	Work Shop	Walls	North, South	Peg Board	No								
B06	Work Shop	Walls	South	Mortar	No								2 Pipe penetrations in the south wall, into the framing shop, are sealed with mortar
B06	Work Shop	Floor	Final Layer	Concrete	No								
B07	Elevator Room	Ceiling Space	Ceiling	Pre-Formed Concrete	No								
B07	Elevator Room	Overhead	Mechanical	Duct Insulation	Yes	Chrysotile	75%	Mud Compound	Mech. Rm. B04 - Mud/Insulation On Overhead Ducting Above Dials At Back Blue Boiler	Yes	Remove		

Number	Area	Elements	Sub Elements	Material Description	Suspect	Type	Asbestos	ACM Product	Sample Location	Renovation	Action	Removed?	Comments
B07	Elevator Room	Ceiling	Final Layer	Concrete	No								
B07	Elevator Room	Walls	South, East, West	Cinderblock	No					Yes	Demo		Demo the applicable walls.
B07	Elevator Room	Walls	North	Concrete	No								
B07	Elevator Room	Walls	East	Electrical Insulator	Yes								Item was energized, did not sample.
B07	Elevator Room	Floor	Final Layer	Concrete	No								
B09	Lunch Room	Ceiling	North Ceiling	Concrete Slab									
B09	Lunch Room	Overhead	Electrical	Light Fixture Heat Shield Material	Yes	Chrysotile	70%	Heat Shield Material	B09B Corridor - Heat Shield Material In The Incandescent Light Fixture	Yes	Remove		
B09	Lunch Room	Overhead	Plumbing	Pipe Fitting Compound	Yes	Chrysotile	70%	Pipeline Fitting Compound	B06 Workshop - Small Pipeline Fitting Compound Northwest Corner	Yes	Remove		
B09	Lunch Room	Ceiling	Ceiling Surface	Drywall Mud Compound	Yes	No Asbestos Detected			B09 - Drywall Mud Compound From Ceiling- Joint Compound				
B09	Lunch Room	Ceiling	Ceiling Surface	Drywall Mud Compound	Yes	No Asbestos Detected			B09 - Drywall Mud Compound From Ceiling- Skim Coat				
B09	Lunch Room	Ceiling	Bulkhead	Plaster Base Coat	Yes	No Asbestos Detected			B14 Boiler Room #2 - Plaster With Skim Coat Adjacent Breaker Box	Yes	Demo		
B09	Lunch Room	Overhead	Plumbing	3in od Lineal Fiberglass Pipe Insulation	No								
B09	Lunch Room	Overhead	Plumbing	1.5in od Lineal Fiberglass Pipe Insulation	No								
B09	Lunch Room	Overhead	Plumbing	Cast Drain Pipes	No								

Number	Area	Elements	Sub Elements	Material Description	Suspect	Type	Asbestos	ACM Product	Sample Location	Renovation	Action	Removed?	Comments
B09	Lunch Room	Overhead	Plumbing	2in Styrofoam Insulation	No								
B09	Lunch Room	Walls	West, South	Drywall Mud Compound	Yes	No Asbestos Detected			B09 - Drywall Mud Compound From Walls	Yes	Demo		Remove the applicable walls.
B09	Lunch Room	Walls	South	Plywood	No								
B09	Lunch Room	Walls	East	Cinderblock	No					Yes	Demo		
B09	Lunch Room	Walls	North	Concrete	No								
B09	Lunch Room	Walls	North	Mortar	No								Penetrations have been sealed with Mortar
B09	Lunch Room	Walls	North	Silicon	No								Penetrations have been sealed with red high temperature silicon
B09	Lunch Room	Floor	Sheet Flooring	White Stone Pattern Sheet Flooring	Yes	No Asbestos Detected			B09 Lunch Room - Sheet Flooring				
B09	Lunch Room	Floor	Final Layer	Concrete	No								
B09b	Corridor	Ceiling	Ceiling Surface	Concrete Slab									
B09b	Corridor	Overhead	Electrical	Heat Shield Material	Yes	Chrysotile	70%	Heat Shield Material	B09B Corridor - Heat Shield Material In The Incandescent Light Fixture	Yes	Remove		
B09b	Corridor	Overhead	Plumbing	Pipeline Fitting Compound	Yes	Chrysotile	75%	Pipeline Fitting Compound	Mech. Rm. B04 - Medium Pipe Fitting Compound Behind AHU #1 West Wall	Yes	Remove		
B09b	Corridor	Overhead	Mechanical	Duct Mastic	Yes	Chrysotile	3%	Duct Mastic	119 - Duct Mastic From Overhead Duct	Yes	Remove		
B09b	Corridor	Overhead	Plumbing	3in od Lineal Fiberglass Pipe Insulation	No								
B09b	Corridor	Overhead	Plumbing	6in od Lineal Fiberglass Pipe Insulation	No								
B09b	Corridor	Overhead	Plumbing	1.5in od Lineal Fiberglass Pipe Insulation	No								
B09b	Corridor	Overhead	Plumbing	Cast Drain Pipes	No								

Number	Area	Elements	Sub Elements	Material Description	Suspect	Type	Asbestos	ACM Product	Sample Location	Renovation	Action	Removed?	Comments
B09b	Corridor	Ceiling	Final Layer	Concrete	No								
B09b	Corridor	Walls	North	Concrete	No								
B09b	Corridor	Walls	South	Plywood	No					Yes	Demo		Remove the applicable walls.
B09b	Corridor	Walls	East, South	Drywall Mud Compound	Yes	No Asbestos Detected			B09 - Drywall Mud Compound From Ceiling- Joint Compound	Yes	Demo		Remove the applicable walls.
B09b	Corridor	Walls	East, South	Drywall Mud Compound	Yes	No Asbestos Detected			B09 - Drywall Mud Compound From Ceiling- Skim Coat	Yes	Demo		Remove the applicable walls.
B09b	Corridor	Walls	West	Cinderblock	No					Yes	Demo		Remove the applicable walls.
B09b	Corridor	Floor	Sheet Flooring		No								
B09b	Corridor	Floor	Final Layer	Concrete	No								
B10	Work Shop	Ceiling Space	Plumbing	Pipeline Fitting Compound	Yes	Chrysotile	70%	Pipeline Fitting Compound	B06 Workshop - Small Pipeline Fitting Compound Northwest Corner	Yes	Remove		Remove the pipeline fittings within the bulkhead.
B10	Work Shop	Ceiling	Ceiling Surface	Drywall Mud Compound	Yes	Chrysotile	3%	Drywall Mud Compound	B10 Workshop - Drywall Mud Compound On The Ceiling Adjacent Pillar & Fire Detector Adjacent The Overhead Door.	Yes	Remove		
B10	Work Shop	Overhead	Plumbing	3in od Lineal Fiberglass Pipe Insulation									2 pipes in south wall in pvc pipe.
B10	Work Shop	Walls	South, West	Fibrous Material	Yes	No Asbestos Detected			B10 - Fibrous Material Southwest Corner Adjacent Fire Extinguisher				
B10	Work Shop	North Wall	Cinderblock	Vermiculite	Yes	Actinolite/Tremolite	>1%	vermiculite	B10 / B12 -Vermiculite in North Wall	Yes	Remove		Vermiculite within the north block wall. Entire length of wall is being demoed with the asbestos removal.
B10	Work Shop	Walls	South, West	Concrete	No								
B10	Work Shop	Walls	East	Drywall Mud Compound	No					Yes	Demo		Remove the applicable walls.
B10	Work Shop	Floor	Final Layer	Concrete	No								

Number	Area	Elements	Sub Elements	Material Description	Suspect	Type	Asbestos	ACM Product	Sample Location	Renovation	Action	Removed?	Comments
B11	Storage Vault	Ceiling Space	Ceiling	Q-Decking	No								
B11	Storage Vault	Overhead	Mechanical	Fiberglass Duct Insulation	Yes	No Asbestos Detected			B11 - Duct Insulation from duct on south wall				
B11	Storage Vault	Ceiling	Plumbing	Mud Compound	Yes	No Asbestos Detected			B11 Storage Vault - Mud Compound On Hanger Above Entry				
B11	Storage Vault	Ceiling	Ceiling Surface	Drywall Mud Compound	Yes	Chrysotile	1-5%	Drywall Mud Compound	B11 - Compilation of Drywall Mud Compound From Columns & Ceiling	Yes	Remove		
B11	Storage Vault	Wall	Plumbing	Transite Pipe (RWL)	Yes	Chrysotile/ Crocidolite	40%/10%	Transite Pipe	200 - Transite Pipe Above Ceiling - Visible From Access Hatch	No	Manage		Vertical Transite Pipe in the Northeast Corner - Rain Water Leader (RWL). To be removed in another phase under separate contract.
B11	Storage Vault	Walls	North, West, East	Concrete	No								
B11	Storage Vault	Walls	South	Vermiculite	Yes	Actinolite/ Tremolite	>1%	vermiculite	B10 / B12 -Vermiculite in North Wall	Yes	Remove		Vermiculite within the south block wall. Entire length of wall is being demoed with the asbestos removal.
B11	Storage Vault	Floor	Final Layer	Concrete	No								
B12	Shipping & Receiving	Ceiling	Ceiling Surface	Concrete	No								
B12	Shipping & Receiving	Walls	South, West, East	Drywall Mud Compound	Yes	No Asbestos Detected			B12 -Compilation of Drywall Mud Compound From Walls				
B12	Shipping & Receiving	Walls	North	Vermiculite	Yes	Actinolite/ Tremolite	>1%	vermiculite	B10 / B12 -Vermiculite in North Wall	Yes	Remove		
B12	Shipping & Receiving	Floor	Final Layer	Concrete	No								

Number	Area	Elements	Sub Elements	Material Description	Suspect	Type	Asbestos	ACM Product	Sample Location	Renovation	Action	Removed?	Comments
B13	Lunch Room	Ceiling Space	Mechanical	Ducting Adhesive	Yes	No Asbestos Detected			B13 Lunch Room - Ducting Adhesive Adjacent Exit Door Above Access Hatch				
B13	Lunch Room	Ceiling	Ceiling Surface	Drywall Mud Compound	Yes	Chrysotile	1-5%	Drywall Mud Compound	B13 -Ceiling Drywall Mud Compound	Yes	Remove		
B13	Lunch Room	Ceiling	Base Coat	Plaster	Yes	No Asbestos Detected			B03 - Ceiling Plaster from ceiling space				
B13	Lunch Room	Walls	North, West	Drywall Mud Compound	Yes	No Asbestos Detected			B13 -Compilation of Drywall Mud Compound From Walls				
B13	Lunch Room	Walls	South, East	Wall Panel	No								
B13	Lunch Room	Walls	East	2in od Lineal Fiberglass Insulation	No								
B13	Lunch Room	Floor	Sheet Flooring	Stone Pattern Sheet Flooring	Yes	No Asbestos Detected			B13 Lunch Room - Sheet Flooring				
B13	Lunch Room	Floor	Final Layer	Concrete	No								
B14	Mechanical Room #2	Ceiling	Final Layer	Pre-Formed Concrete	No								
B14	Mechanical Room #2	Ceiling	Ceiling Surface	Plaster	Yes	No Asbestos Detected			B14 Boiler Room #2 - Plaster With Skim Coat Adjacent Breaker Box	Yes	Demo		Demo the ceiling plaster.
B14	Mechanical Room #2	Wall		Plaster	Yes	No Asbestos Detected			B14 Boiler Room #2 - Plaster With Skim Coat Adjacent Breaker Box				
B14	Mechanical Room #2	Wall		Mud Compound	Yes	No Asbestos Detected			B14 Boiler Room #2 - Mud/Plaster On Window Seam North East Corner Behind AHU				
B14	Mechanical Room #2	Wall		Plaster	Yes	No Asbestos Detected			B14 Boiler Room #2 - Plaster Skim Coat In North Wall Cavity				

Number	Area	Elements	Sub Elements	Material Description	Suspect	Type	Asbestos	ACM Product	Sample Location	Renovation	Action	Removed?	Comments
B14	Mechanical Room #2	Wall		Plaster	Yes	No Asbestos Detected			B14 Boiler Room #2 - Plaster Base Coat 1 In North Wall Cavity				
B14	Mechanical Room #2	Wall		Plaster	Yes	No Asbestos Detected			B14 Boiler Room #2 - Plaster Base Coat 2 In North Wall Cavity				
B14	Mechanical Room #2	Mechanical		Duct Insulation	Yes	No Asbestos Detected			B14 Boiler Room #2 - Insulation In Ducting North East Corner Of AHU				
B14	Mechanical Room #2	Mechanical		Tar	Yes	No Asbestos Detected			B14 Boiler Room #2 - Tar Behind Lineal Pipe Insulation Above Black Valve				
B14	Mechanical Room #2	Mechanical		Pipefitting	Yes	No Asbestos Detected			B14 Boiler Room #2 - Small Pipefitting Compound At "T-Joint" Adjacent Red & White Valve				Some pipefittings may be inaccessible above the plaster ceiling along the east side of the room. These should be presumed acm until determined otherwise.
B14	Mechanical Room #2	Mechanical		Pipefitting	Yes	No Asbestos Detected			B14 Boiler Room #2 - Medium Pipefitting Compound On Red & White Steam Line Overhead				Some pipefittings may be inaccessible above the plaster ceiling along the east side of the room. These should be presumed acm until determined otherwise.
B14	Mechanical Room #2	Mechanical		Mud Compound	Yes	No Asbestos Detected			B14 Boiler Room #2 - Mud Compound Medium End Cap Top Front Of Boiler				
B14	Mechanical Room #2	Mechanical		Pipefitting	Yes	No Asbestos Detected			B14 Boiler Room #2 - Small Pipefitting Compound Adjacent Flange On Front Top Boiler				
B14	Mechanical Room #2	Mechanical		Pipefitting	Yes	No Asbestos Detected			B14 Boiler Room #2 - Small Pipefitting Compound Adjacent Red & White Steam Line				
B14	Mechanical Room #2	Mechanical	Firestop	Rope Gasket	Yes	Chrysotile	70%	Gasket Material	B14 Boiler Room 2 - Rope Gasket Material On The Underside Of The Duct In The Northwest Corner Of Room.	Yes	Remove		The gasket is located around the supply air intake duct penetration on the north wall and on the underside of the duct in the northwest corner of the room.

Number	Area	Elements	Sub Elements	Material Description	Suspect	Type	Asbestos	ACM Product	Sample Location	Renovation	Action	Removed?	Comments
B14	Mechanical Room #2	Mechanical		Mud Compound	Yes	No Asbestos Detected			B14 Boiler Room #2 - Mud Compound At Flange On Top Of Boiler				
B14	Mechanical Room #2	Wall		Cinderblock	Yes	No Asbestos Detected			B14 Mech. Rm. 2 - Cinder Block On West Wall Adjacent Chem Mixer				
B14	Mechanical Room #2	Floor		Debris	Yes	No Asbestos Detected			B14 Boiler Room #2 - Debris On Floor North East Corner Behind AHU				
B14	Mechanical Room #2	Walls	South	Drywall Mud Compound	Yes	Chrysotile	2%	Drywall Mud Compound	B14 Boiler Room #2 - Drywall Compound on South Wall	Yes	Remove		DMC is located on the walls surrounding the washroom from the mechanical room side.
B14	Mechanical Room #2	Walls	West, East, North	Cinderblock	No								
B14	Mechanical Room #2	Floor	Concrete Pad	Concrete	No	No Asbestos Detected			B14 - Concrete Pad under east AHU				
B14	Mechanical Room #2	Floor	Concrete Pad	Concrete	No	No Asbestos Detected			B14 - Concrete Pad under Compressor				
B14	Mechanical Room #2	Floor	Concrete Pad	Concrete	No	No Asbestos Detected			B14 - Concrete Pad under West Boiler				
B14	Mechanical Room #2	Floor	Concrete Pad	Concrete	No	No Asbestos Detected			B14 - Concrete Pad under AHU # Mag-RF08				
B14	Mechanical Room #2	Wall		Plaster	Yes	Chrysotile	20%	Plaster	B14 - Plaster at Large AHU Duct in the North Wall Penetration.	Yes	Remove		
B14	Mechanical Room #2	Mechanical		Pipefitting	Yes	Chrysotile	60%	Pipeline Fitting Compound	B14 Boiler Room #2 - Small Pipefitting Compound Above the Ducting Above Entry Area.	Yes	Remove		Some pipefittings may be inaccessible above the plaster ceiling along the east side of the room. These should be presumed acm until determined otherwise.

Number	Area	Elements	Sub Elements	Material Description	Suspect	Type	Asbestos	ACM Product	Sample Location	Renovation	Action	Removed?	Comments
B14	Mechanical Room #2	Fire-Door		Interior of Door	Yes	No Asbestos Detected			B14 - Material in the Entry Door Core				
B14	Mechanical Room #2	Floor	Final Layer	Concrete	No								
B14	Corridor	Ceiling	Ceiling Space	Pre-Formed Concrete	No								
B14	Corridor	Overhead	Plumbing	1.5in od Lineal Fiberglass Pipe Insulation	No								
B14	Corridor	Overhead	Plumbing	2.5in od Lineal Fiberglass Pipe Insulation	No								
B14	Corridor	Overhead	Plumbing	3in od Lineal Fiberglass Pipe Insulation	No								
B14	Corridor	Mechanical		Duct Mastic	Yes	Chrysotile	3%	Duct Mastic	119 - Duct Mastic From Overhead Duct	No	Manage		
B14	Corridor	Mechanical	Firestop	Rope Gasket	Yes	Chrysotile	70%	Gasket Material	B14 Boiler Room 2 - Rope Gasket Material On The Underside Of The Duct In The Northwest Corner Of Room.	Yes	Remove		The gasket is located around the duct penetration on the northeast corner of the corridor.
B14	Corridor	Walls	East	Silicon	No								High temperature silicon around duct on east wall.
B14	Corridor	Walls	South, East, West	Cinderblock	No								
B14	Corridor	Walls	North	Concrete	No								
B14	Corridor	Floor	Floor Tile	9" x 9" Crème With Brown Streak Floor Tile	Yes	Chrysotile	7%	Vinyl Asbestos Tile	Projector Room B02 - 9" x 9" Crème With Brown Streak Floor Tile	Yes	Remove		
B14	Corridor	Floor	Floor Mastic	Floor Tile Mastic	Yes	Chrysotile	2%	Floor Tile Mastic	119 - 9" x 9" Crème With Brown Streak Floor Tile Mastic	Yes	Remove		
B14	Corridor	Floor	Final Layer	Concrete	No								

Number	Area	Elements	Sub Elements	Material Description	Suspect	Type	Asbestos	ACM Product	Sample Location	Renovation	Action	Removed?	Comments
B14	Washroom	Ceiling	Ceiling Surface	Plaster	Yes	No Asbestos Detected			B14 Boiler Room #2 - Plaster With Skim Coat Adjacent Breaker Box	Yes	Demo		Demo the ceiling plaster.
B14	Washroom	Walls	East, North	Drywall Mud Compound	Yes	No Asbestos Detected			Compilation of Drywall Mud Compound from B15 and B16	Yes	Demo		Demo the applicable walls.
B14	Washroom	Walls	West, South	Cinderblock	No					Yes	Demo		Demo the applicable walls.
B14	Washroom	Walls	All	Ceramic Tile	No					Yes	Demo		Demo the applicable walls.
B14	Washroom	Floor	Floor Tile	9" x 9" Crème With Brown Streak Floor Tile	Yes	Chrysotile	7%	Vinyl Asbestos Tile	Projector Room B02 - 9" x 9" Crème With Brown Streak Floor Tile	Yes	Remove		
B14	Washroom	Floor	Floor Mastic	Floor Tile Mastic	Yes	Chrysotile	2%	Floor Tile Mastic	119 - 9" x 9" Crème With Brown Streak Floor Tile Mastic	Yes	Remove		
B14	Washroom	Floor	Final Layer	Concrete	No								
B15a-g	Office	Ceiling Space	Ceiling	Pre-Formed Concrete	No								
B15a-g	Office	Ceiling Space	Plumbing	Pipeline Fitting Compound	Yes	Chrysotile	70%	Pipeline Fitting Compound	B15c Office Space - Medium Pipeline Fitting Compound Above Suspended Ceiling Adjacent Door & Cabinet	Yes	Remove		Fittings are above the suspended ceiling throughout the B15 Office Space.
B15a-g	Office	Ceiling Space	Plumbing	1.5in od Lineal Fiberglass Pipe Insulation	No								
B15a-g	Office	Ceiling Space	Plumbing	3in od Lineal Fiberglass Pipe Insulation	No								
B15a-g	Office	Ceiling Space	Plumbing	Cast RWL	No								
B15a-g	Office	Ceiling Space	Misc	Debris	Yes	No Asbestos Detected			B15c Office Space - Debris On Top Of Ducting Above Suspended Ceiling				
B15a-g	Office	Ceiling Space	Mechanical	Duct Mastic	Yes	Chrysotile	3%	Duct Mastic	119 - Duct Mastic From Overhead Duct	Yes	Remove		
B15a-g	Office	Ceiling	Ceiling Tile	2x4 Pinhole/Gash Ceiling Tile	Yes	No Asbestos Detected			B18a - 2'x4' Pinhole Gash Ceiling Tile				

Number	Area	Elements	Sub Elements	Material Description	Suspect	Type	Asbestos	ACM Product	Sample Location	Renovation	Action	Removed?	Comments
B15a-g	Office	Walls	North, West	Block	No								
B15a-g	Office	Walls		Drywall Mud Compound	Yes	No Asbestos Detected			Compilation of Drywall Mud Compound from B15 and B16				
B15a-g	Office	Wall	East	Plaster / Skim Coat	Yes	No Asbestos Detected			B14 Boiler Room #2 - Plaster With Skim Coat Adjacent Breaker Box	Yes	Demo		Demo the applicable walls.
B15a-g	Office	Floor	Floor Tile	9" x 9" Crème With Brown Streak Floor Tile	Yes	Chrysotile	7%	Vinyl Asbestos Tile	Projector Room B02 - 9" x 9" Crème With Brown Streak Floor Tile	Yes	Remove		Floor tile runs underneath partitions between B15, B16, and B17
B15a-g	Office	Floor	Floor Mastic	Floor Tile Mastic	Yes	Chrysotile	2%	Floor Tile Mastic	119 - 9" x 9" Crème With Brown Streak Floor Tile Mastic	Yes	Remove		
B15a-g	Office	Floor	Final Layer	Concrete	No								
B16	Office	Ceiling Space	Ceiling	Pre-Formed Concrete	No								
B16	Office	Ceiling Space	Plumbing	3in od Lineal Fiberglass Pipe Insulation	No								
B16	Office	Ceiling Space	Mechanical	Duct Mastic	Yes	Chrysotile	3%	Duct Mastic	119 - Duct Mastic From Overhead Duct	No	Manage		
B16	Office	Ceiling Space	Plumbing	Pipeline Fitting Compound	Yes	Chrysotile	70%	Pipeline Fitting Compound	B15c Office Space - Medium Pipeline Fitting Compound Above Suspended Ceiling Adjacent Door & Cabinet	Yes	Remove		Fittings are above the suspended ceiling throughout the B16 Office Space.
B16	Office	Ceiling Space	Plumbing	Cast RWL	No								
B16	Office	Ceiling	Ceiling Tile	2x4 Pinhole/Gash Ceiling Tile	Yes	No Asbestos Detected			B18a - 2'x4' Pinhole Gash Ceiling Tile				
B16	Office	Walls	North, South	Drywall Mud Compound	Yes	No Asbestos Detected			B15/B16 -Compilation of Drywall Mud Compound From Walls				
B16	Office	Wall	East	Plaster / Skim Coat	Yes	No Asbestos Detected			B14 Boiler Room #2 - Plaster With Skim Coat Adjacent Breaker Box				

Number	Area	Elements	Sub Elements	Material Description	Suspect	Type	Asbestos	ACM Product	Sample Location	Renovation	Action	Removed?	Comments
B16	Office	Floor	Floor Tile	9" x 9" Crème With Brown Streak Floor Tile	Yes	Chrysotile	7%	Vinyl Asbestos Tile	Projector Room B02 - 9" x 9" Crème With Brown Streak Floor Tile	Yes	Remove		Floor tile runs underneath partitions between B15, B16, and B17
B16	Office	Floor	Floor Mastic	Floor Tile Mastic	Yes	Chrysotile	2%	Floor Tile Mastic	119 - 9" x 9" Crème With Brown Streak Floor Tile Mastic	Yes	Remove		
B16	Office	Floor	Final Layer	Concrete	No								
B17a/t	Office	Ceiling Space	Ceiling	Pre-Formed Concrete	No								
B17a/t	Office	Ceiling Space	Plumbing	3in od Lineal Fiberglass Pipe Insulation	No								
B17a/t	Office	Ceiling Space	Mechanical	Duct Mastic	Yes	Chrysotile	3%	Duct Mastic	119 - Duct Mastic From Overhead Duct	No	Manage		
B17a/t	Office	Ceiling Space	Plumbing	Pipeline Fitting Compound	Yes	Chrysotile	70%	Pipeline Fitting Compound	Mech. Rm. B04 - Red Medium Pipefitting Compound At Back Of Auditorium AHU.	Yes	Remove		Pipe Fitting Compound located in Southeast corner as well as above suspended ceiling above window and above cubicle area.
B17a/t	Office	Ceiling Space	Plumbing	Cast RWL	No								
B17a/t	Office	Ceiling	Ceiling Tile	2x4 Pinhole/Gash Ceiling Tile	Yes	No Asbestos Detected			B18a - 2'x4' Pinhole Gash Ceiling Tile				
B17a/t	Office	Walls	North, South	Drywall Mud Compound	Yes	No Asbestos Detected			Compilation of Drywall Mud Compound from B15 and B16				
B17a/t	Office	Wall	East	Plaster / Skim Coat	Yes	No Asbestos Detected			B14 Boiler Room #2 - Plaster With Skim Coat Adjacent Breaker Box				
B17a/t	Office	Walls	South, West	Cinderblock	No								
B17a/t	Office	Walls	South, East	3in od Lineal Fiberglass Pipe Insulation	No								2 Plumbing stacks are located in the south east corner of the room. Both are wrapped in non suspect fiberglass insulation.
B17a/t	Office	Walls	South, East	2in od Lineal Fiberglass Pipe Insulation	No								2 Plumbing stacks are located in the south east corner of the room. Both are wrapped in non suspect fiberglass insulation.

Number	Area	Elements	Sub Elements	Material Description	Suspect	Type	Asbestos	ACM Product	Sample Location	Renovation	Action	Removed?	Comments
B17a/t	Office	Floor	Floor Tile	9" x 9" Crème With Brown Streak Floor Tile	Yes	Chrysotile	7%	Vinyl Asbestos Tile	Projector Room B02 - 9" x 9" Crème With Brown Streak Floor Tile	Yes	Remove		Floor tile runs underneath partitions between B15, B16, and B17
B17a/t	Office	Floor	Floor Mastic	Floor Tile Mastic	Yes	Chrysotile	2%	Floor Tile Mastic	119 - 9" x 9" Crème With Brown Streak Floor Tile Mastic	Yes	Remove		
B17a/t	Office	Floor	Final Layer	Concrete									
B18a-e	Office	Ceiling Space	Ceiling	Pre-Formed Concrete	No								
B18a-e	Office	Ceiling Space	Ceiling Space	Pipeline Fitting Compound	Yes	Chrysotile	70%	Pipeline Fitting Compound	Mech. Rm. B04 - Red Medium Pipefitting Compound At Back Of Auditorium AHU.	Yes	Remove		
B18a-e	Office	Ceiling Space	Ceiling Space	3in od Lineal Fiberglass Pipe Insulation	No								
B18a-e	Office	Ceiling Space	Plumbing	Cast RWL									
B18a-e	Office	Ceiling	Ceiling Tile	2x4 Pinhole/Gash Ceiling Tile	Yes	No Asbestos Detected			B18a - 2'x4' Pinhole Gash Ceiling Tile				
B18a-e	Office	Wall	East	Plaster / Skim Coat	Yes	No Asbestos Detected			B18e Office Space - Plaster Skim Coat				
B18a-e	Office	Wall	East	Plaster / Skim Coat	Yes	No Asbestos Detected			B18e Office Space - Plaster Base Coat	Yes	Remove		
B18a-e	Office	Floor	Sheet Flooring	Blue Sheet Flooring	Yes	No Asbestos Detected			B18e Office Space - Sheet Flooring Adjacent Entry				
B18a-e	Office	Floor	Final Layer	Concrete	No								
B19a-e	Office	Ceiling Space	Ceiling	Pre-Formed Concrete	No								
B19a-e	Office	Ceiling Space	Mechanical	Duct Mastic	Yes	Chrysotile	3%	Duct Mastic	119 - Duct Mastic From Overhead Duct	Yes	Remove		
B19a-e	Office	Ceiling Space	Plumbing	Pipeline Fitting Compound	Yes	Chrysotile	70%	Pipeline Fitting Compound	Mech. Rm. B04 - Red Medium Pipefitting Compound At Back Of Auditorium AHU.	Yes	Remove		All fittings above the metal slotted ceiling require removal.

Number	Area	Elements	Sub Elements	Material Description	Suspect	Type	Asbestos	ACM Product	Sample Location	Renovation	Action	Removed?	Comments
B19a-e	Office	Ceiling Space	Plumbing	2in lineal fiberglass pipe insulation	No								
B19a-e	Office	Ceiling Space	Plumbing	3in lineal fiberglass pipe insulation	No								
B19a-e	Office	Ceiling	Ceiling Surface	Metal Slat Ceiling	No								
B19a-e	Office	Walls	South	Drywall Partition	No								
B19a-e	Office	Walls	North, East, West	Drywall Mud Compound	Yes	No Asbestos Detected			B19 - Compilation of Drywall Mud Compound From Walls				
B19a-e	Office	Floor	Carpet	Blue Carpet	No								
B19a-e	Office	Floor	Final Layer	Concrete	No								
B20	Vestibule	Ceiling Space	Plumbing	Pipeline Fitting Compound	Yes	Chrysotile	70%	Pipeline Fitting Compound	Mech. Rm. B04 - Red Medium Pipefitting Compound At Back Of Auditorium AHU.	Yes	Remove		Fittings above plaster ceiling. Some were accessible from one access ceiling panel to identify with red paint. Consider all fittings throughout the ceiling space to be ACM.
B20	Vestibule	Ceiling	Base Coat	Plaster	Yes	No Asbestos Detected			B03 - Ceiling Plaster from ceiling space	Yes	Demo		
B20	Vestibule	Walls		Plaster Base Coat	Yes	No Asbestos Detected			B20 - Compilation of Mud Compound From Walls - Beige Base Coat				
B20	Vestibule	Walls		Plaster Skim Coat	Yes	No Asbestos Detected			B20 - Compilation of Mud Compound From Walls - White Skim Coat				
B20	Vestibule	Floor	Floor Tile	9" x 9" Crème With Brown Streak Floor Tile	Yes	Chrysotile	7%	Vinyl Asbestos Tile	Projector Room B02 - 9" x 9" Crème With Brown Streak Floor Tile	Yes	Remove		
B20	Vestibule	Floor	Floor Mastic	Floor Tile Mastic	Yes	Chrysotile	2%	Floor Tile Mastic	119 - 9" x 9" Crème With Brown Streak Floor Tile Mastic	Yes	Remove		
B20	Vestibule	Floor	Final Layer	Concrete	No								
B21	Conservatory Work Shop	Walls			Yes	No Asbestos Detected			B21 Conservatory Workshop - Plaster & Skim Coat North Wall				

Number	Area	Elements	Sub Elements	Material Description	Suspect	Type	Asbestos	ACM Product	Sample Location	Renovation	Action	Removed?	Comments
B21	Conservatory Workshop	Walls			Yes	No Asbestos Detected			B21 Conservatory Workshop - Concrete & Skim Coat South Wall				
B21	Conservatory Workshop	Mechanical		Insulated Pipeline	No								
B21	Conservatory Workshop	Floor		Concrete	No								
B22	Conservatory Storage	Ceiling	Base Coat	Plaster	Yes	No Asbestos Detected			B03 - Ceiling Plaster from ceiling space	Yes	Demo		
B22	Conservatory Storage	Ceiling Space	Ceiling	Pre-Formed Concrete	No								
B22	Conservatory Storage	Ceiling Space	Plumbing	Pipeline Fitting Compound	Yes	Chrysotile	70%	Pipeline Fitting Compound	Mech. Rm. B04 - Red Medium Pipefitting Compound At Back Of Auditorium AHU.	Yes	Remove		Fittings are suspect above the plaster ceiling. Consider all fittings throughout the ceiling space to be ACM.
B22	Conservatory Storage	Wall	West	Pipeline Fitting Compound	Yes	Chrysotile	70%	Pipeline Fitting Compound	Mech. Rm. B04 - Red Medium Pipefitting Compound At Back Of Auditorium AHU.	Yes	Remove		Fittings are present in the west wall behind the access panel. Consider all fittings throughout the wall cavity to be ACM.
B22	Conservatory Storage	Walls		Plaster / Skim Coat	Yes	No Asbestos Detected			B21 Conservatory Workshop - Plaster & Skim Coat North Wall				
B22	Conservatory Storage	Floor		Concrete	No								
B23	Office	Ceiling	Base Coat	Plaster	Yes	No Asbestos Detected			B03 - Ceiling Plaster from ceiling space	Yes	Demo		
B23	Office	Ceiling Space	Ceiling	Pre-Formed Concrete	No								

Number	Area	Elements	Sub Elements	Material Description	Suspect	Type	Asbestos	ACM Product	Sample Location	Renovation	Action	Removed?	Comments
B23	Office	Ceiling Space	Plumbing	Pipeline Fitting Compound	Yes	Chrysotile	70%	Pipeline Fitting Compound	Mech. Rm. B04 - Red Medium Pipefitting Compound At Back Of Auditorium AHU.	Yes	Remove		Fittings are suspect above the plaster ceiling. Consider all fittings throughout the ceiling space to be ACM.
B23	Office	Walls		Plaster / Skim Coat	Yes	No Asbestos Detected			B21 Conservatory Workshop - Plaster & Skim Coat North Wall				
B23	Office	Floor	Floor Mastic	Floor Tile Mastic	Yes	Chrysotile	2%	Floor Tile Mastic	119 - 9" x 9" Crème With Brown Streak Floor Tile Mastic	Yes	Remove		
B23	Office	Floor	Floor Tile	9" x 9" Crème With Brown Streak Floor Tile	Yes	Chrysotile	7%	Vinyl Asbestos Tile	Projector Room B02 - 9" x 9" Crème With Brown Streak Floor Tile	Yes	Remove		
B24/25	Men's Washroom	East Wall	Plumbing	Pipe Fitting Compound	Yes	Chrysotile	70%	Pipeline Fitting Compound	Mech. Rm. B04 - Red Medium Pipefitting Compound At Back Of Auditorium AHU.	Yes	Remove		The fittings are located within the east wall cavity
B24/25	Men's Washroom	Ceiling Space	Plumbing	Pipe Fitting Compound	Yes	Chrysotile	70%	Pipeline Fitting Compound	Mech. Rm. B04 - Red Medium Pipefitting Compound At Back Of Auditorium AHU.	Yes	Remove		The fittings are located above the inaccessible ceiling.
B24/25	Men's Washroom	Ceiling	B24/25	Men's Washroom	Yes	No Asbestos Detected			B03 - Ceiling Plaster from ceiling space	Yes	Demo		
B24/25	Men's Washroom	Walls		Plaster / Skim Coat	Yes	No Asbestos Detected			B21 Conservatory Workshop - Plaster & Skim Coat North Wall				
B24/25	Men's Washroom	Walls		Ceramic Tile	No								
B24/25	Men's Washroom	Floor		Ceramic Tile	No								
B26	Vestibule	Ceiling Space	Plumbing	Pipe Fitting Compound	Yes	Chrysotile	40%	Pipeline Fitting Compound	B26 Vestibule - Small Pipefitting Compound Above Drywall Ceiling	Yes	Remove		
B26	Vestibule	Ceiling	Ceiling Surface	Plywood	No								
B26	Vestibule	Ceiling	B24/25	Plaster / Skim Coat	Yes	No Asbestos Detected			B03 - Ceiling Plaster from ceiling space	Yes	Demo		

Number	Area	Elements	Sub Elements	Material Description	Suspect	Type	Asbestos	ACM Product	Sample Location	Renovation	Action	Removed?	Comments
B26	Vestibule	Walls		Drywall Mud Compound	Yes	No Asbestos Detected			B26 Vestibule - Drywall Mud Compound				
B26	Vestibule	Walls		Plaster / Skim Coat	Yes	No Asbestos Detected			B26 Vestibule - Plaster Base Coat				
B26	Vestibule	Walls		Ceramic Tile	No								
B26	Vestibule	Floor		Ceramic Tile	No								
B27	Women's Washroom	Ceiling Space		Debris	Yes	No Asbestos Detected			B27 Women's Washroom - Plaster/Vermiculite Debris Above Access Hatch Over Sink				
B27	Women's Washroom	Ceiling Space	Plumbing	Pipe Fitting Compound	Yes	Chrysotile	70%	Pipeline Fitting Compound	Mech. Rm. B04 - Red Medium Pipefitting Compound At Back Of Auditorium AHU.	Yes	Remove		The fittings are located above the inaccessible ceiling.
B27	Women's Washroom	Ceiling	Ceiling Surface	Plywood	No								
B27	Women's Washroom	Ceiling	Ceiling Surface	Plaster / Skim Coat	Yes	No Asbestos Detected			B26 Vestibule - Plaster Base Coat	Yes	Demo		
B27	Women's Washroom	Walls		Drywall Mud Compound	Yes	No Asbestos Detected			B26 Vestibule - Drywall Mud Compound				
B27	Women's Washroom	Walls		Plaster / Skim Coat	Yes	No Asbestos Detected			B26 Vestibule - Plaster Base Coat				
B27	Women's Washroom	Walls	All	Ceramic Tile	No								
B27	Women's Washroom	Floor		Ceramic Tile	No								

Number	Area	Elements	Sub Elements	Material Description	Susp ect	Type	Asbestos	ACM Product	Sample Location	Renovation	Action	Removed?	Comments
B28	Electrical	Walls		Firestop	Yes	No Asbestos Detected			Electrical B28 - Firestop Material Upper South Wall				
B28	Electrical	Ceiling	Ceiling Surface	Concrete	No								
B28	Electrical	Ceiling		Spray-Applied Fireproofing	Yes	Amosite	60%	Spray-Applied Fireproofing	B29 - Spray-Applied Fireproofing On The Ceiling.	Yes	Remove		HEPA Vacuum any spray-applied fireproofing remnants along the ceiling surface and any surfaces where visible spray-applied fireproofing remnants are present.
B28	Electrical	Walls	South	Concrete	No								
B28	Electrical	Walls	North, East, West	Cinderblock	No								
B28	Electrical	Floor	Floor Surface	Concrete	No								
B29	Transformer Vault	Wall		Concrete	No								
B29	Transformer Vault	Wall		Cinderblock	No								
B29	Transformer Vault	Mechanical		Duct Insulation	Yes	Chrysotile	40%	Mud Compound	Mech. Rm. B04 - Mud/Insulation On Overhead Ducting Adjacent, Blue Boiler	Yes	Remove		
B29	Transformer Vault	Ceiling		Spray-Applied Fireproofing	Yes	Amosite	60%	Spray-Applied Fireproofing	B29 - Spray-Applied Fireproofing On The Ceiling.	Yes	Remove		
S1	Stairwell			Concrete	No								
S2	Stairwell			Concrete	No								
S3	Stairwell			Concrete	No								
S4	Stairwell			Concrete	No								
	Exit Courtyard	Walls	Exterior	Mortar	Yes	No Asbestos Detected			Exit Courtyard - Brick Mortar East Wall				
100	Vestibule	Ceiling	Ceiling Surface	Drywall Mud Compound	Yes	No Asbestos Detected			100,101,127 - Compilation of Ceiling Drywall Mud Compound				

Number	Area	Elements	Sub Elements	Material Description	Susp ect	Type	Asbestos	ACM Product	Sample Location	Renovation	Action	Removed?	Comments
100	Vestibule	Walls		Aluminum Frame Windows	No								
100	Vestibule	Floor	Concrete	Concrete	No								
100	Vestibule	Floor		Carpet	No								
101	Lobby	Ceiling Space	Ceiling Plaster	Plaster Base Coat	Yes	Chrysotile	1%	Plaster	101 - Ceiling Plaster from Ceiling Space above Northwest Light	Yes	Remove		
101	Lobby	Ceiling Space	Ceiling Plaster	Plaster Base Coat	Yes	Chrysotile	2%	Plaster	101 - Ceiling Plaster from Ceiling Space above South Middle Light	Yes	Remove		
101	Lobby	Ceiling	Ceiling Texture	Stipple Ceiling Texture	Yes	Chrysotile	15%	Stipple Ceiling Texture	B01 - Lobby - Stipple Textured Ceiling Material	Yes	Remove		
101	Lobby	Ceiling		Drywall Mud Compound	Yes	No Asbestos Detected			100,101,127 - Compilation of Ceiling Drywall Mud Compound	Yes	Remove		Drywall is fastened to the ceiling on top of the texture ceiling and plaster.
101	Lobby	Walls	South	Drywall Mud Compound	Yes	No Asbestos Detected			102 - Compilation of Drywall Mud Compound From Walls				
101	Lobby	Walls	South, East	10in fiberglass pipe insulation	No								A vertical plumbing stack is located in the northeast corner of lobby (101). The fiberglass pipe insulation is covered by a vinyl covering.
101	Lobby	Walls	East, West	Aluminum Frame Windows	No								
101	Lobby	Floor	Floor Tile	Ceramic Tile	No								
101	Lobby	Floor	Final Layer	Concrete	No								

Number	Area	Elements	Sub Elements	Material Description	Suspect	Type	Asbestos	ACM Product	Sample Location	Renovation	Action	Removed?	Comments
102	Gift Shop	Ceiling Space	Ceiling Plaster	Plaster Base Coat	Yes	No Asbestos Detected			102 - Ceiling Plaster Above Access in Ceiling.	Yes	Remove		
102	Gift Shop	Ceiling	Ceiling Texture	Stipple Ceiling Texture	Yes	Chrysotile	15%	Stipple Ceiling Texture	B01 - Lobby - Stipple Textured Ceiling Material	Yes	Remove		
102	Gift Shop	Ceiling	Electrical	Heat Shield Material	Yes	Chrysotile	70%	Heat Shield Material	102 - Heat Shield Material in Light Fixture	Yes	Remove		Light fixture is in the storage area on the east side of the room.
102	Gift Shop	Walls	North, East, South	Drywall Mud Compound	Yes	No Asbestos Detected			102 - Compilation of Drywall Mud Compound From Walls				
102	Gift Shop	Walls	West, East, North	Wall Paper	No								Textured wallpaper covering plywood.
102	Gift Shop	Walls	West	Cinderblock	No								
102	Gift Shop	Floor	Laminate	Wood Grain Laminate Flooring	No								
102	Gift Shop	Floor	Final Layer	Concrete	No								
103	Storage	Ceiling	Ceiling Surface	Gray Plaster	Yes	No Asbestos Detected							
103	Storage	Overhead	Plumbing	2in od Lineal Fiberglass Pipe Insulation	No								
103	Storage	Overhead	Plumbing	Fiberglass Pipe Fitting	No								
103	Storage	Walls	South	Duct Mastic	Yes	Chrysotile	3%	Duct Mastic	119 - Duct Mastic From Overhead Duct	Yes	Remove		Duct on South Wall
103	Storage	Walls	South	Mud Compound	Yes	No Asbestos Detected			103 - White Mud from Duct on South Wall				
103	Storage	Walls	South, East, West	Drywall Mud Compound	Yes	No Asbestos Detected			103 - Compilation of Drywall Mud From Walls- Joint Compound				
103	Storage	Walls	South, East, West	Plaster / Skim Coat	Yes	No Asbestos Detected			103 - Compilation of Drywall Mud From Walls- Skim Coat				

Number	Area	Elements	Sub Elements	Material Description	Suspect	Type	Asbestos	ACM Product	Sample Location	Renovation	Action	Removed?	Comments
103	Storage	Walls	South, East, West	Gray Plaster	Yes	No Asbestos Detected			103 - Compilation of Drywall Mud From Walls- Base Coat				
103	Storage	Walls	North	Cinderblock	No								
103	Storage	Floor	Floor Tile	9" x 9" Crème With Brown Streak Floor Tile	Yes	Chrysotile	7%	Vinyl Asbestos Tile	Projector Room B02 - 9" x 9" Crème With Brown Streak Floor Tile	Yes	Remove		
103	Storage	Floor	Floor Mastic	Floor Tile Mastic	Yes	Chrysotile	2%	Floor Tile Mastic	119 - 9" x 9" Crème With Brown Streak Floor Tile Mastic	Yes	Remove		
103	Storage	Floor	Final Layer	Concrete	No								
104	Foyer	Ceiling	Ceiling Surface	Gray Plaster	Yes	No Asbestos Detected							
104	Foyer	Overhead	Plumbing	Pipeline Fitting Compound	Yes	Chrysotile	70%	Pipeline Fitting Compound	Mech. Rm. B04 - Small Pipefitting Compound On Red Line Adjacent Front Access Hatch Auditorium AHU	Yes	Remove		
104	Foyer	Walls	North, West, South	Drywall Mud Compound	Yes	No Asbestos Detected			102 - Compilation of Drywall Mud Compound From Walls				
104	Foyer	Walls	East	Plywood	No								
104	Foyer	Walls	East	Concrete	No								
104	Foyer	Floor	Sheet Flooring	Blue Sheet Flooring	Yes	No Asbestos Detected			B18e Office Space - Sheet Flooring Adjacent Entry				
104	Foyer	Floor	Floor Tile	9" x 9" Crème With Brown Streak Floor Tile	Yes	Chrysotile	7%	Vinyl Asbestos Tile	Projector Room B02 - 9" x 9" Crème With Brown Streak Floor Tile	Yes	Remove		Floor tile is underneath blue sheet flooring
104	Storage	Floor	Floor Mastic	Floor Tile Mastic	Yes	Chrysotile	2%	Floor Tile Mastic	119 - 9" x 9" Crème With Brown Streak Floor Tile Mastic	Yes	Remove		
104	Storage	Floor	Final Layer	Concrete	No								
105	Art Education	Ceiling	Ceiling Surface	Gray Plaster	Yes	No Asbestos Detected							

Number	Area	Elements	Sub Elements	Material Description	Suspect	Type	Asbestos	ACM Product	Sample Location	Renovation	Action	Removed?	Comments
105	Art Education	Overhead	Mechanical	Duct Mastic	Yes	Chrysotile	3%	Duct Mastic	119 - Duct Mastic From Overhead Duct	Yes	Remove		
105	Art Education	Overhead	Plumbing	Pipeline Fitting Compound	Yes	Chrysotile	70%	Pipeline Fitting Compound	Mech. Rm. B04 - Small Pipefitting Compound On Red Line Adjacent Front Access Hatch Auditorium AHU	Yes	Remove		
105	Art Education	Overhead	Plumbing	3in od Lineal Fiberglass Pipe Insulation	No								
105	Art Education	Walls	North, South, East, West	Drywall Mud Compound	Yes	No Asbestos Detected			105 -Compilation of Drywall Mud Compound From Walls				
105	Art Education	Floor	Sheet Flooring	Blue Sheet Flooring	Yes	No Asbestos Detected			B18e Office Space - Sheet Flooring Adjacent Entry				
105	Art Education	Floor	Floor Tile	9" x 9" Crème With Brown Streak Floor Tile	Yes	Chrysotile	7%	Vinyl Asbestos Tile	Projector Room B02 - 9" x 9" Crème With Brown Streak Floor Tile	Yes	Remove		Floor tile is underneath blue sheet flooring
105	Art Education	Floor	Floor Mastic	Floor Tile Mastic	Yes	Chrysotile	2%	Floor Tile Mastic	119 - 9" x 9" Crème With Brown Streak Floor Tile Mastic	Yes	Remove		
105	Art Education	Floor	Final Layer	Concrete	No								
106	Office	Ceiling	Ceiling Surface	Gray Plaster	Yes	No Asbestos Detected							
106	Office	Walls	All	Drywall Mud Compound	Yes	No Asbestos Detected			106/107 - Compilation of Drywall Mud Compound From Walls				
106	Office	Floor	Sheet Flooring	Blue Sheet Flooring	Yes	No Asbestos Detected			B18e Office Space - Sheet Flooring Adjacent Entry				
106	Office	Floor	Floor Tile	9" x 9" Crème With Brown Streak Floor Tile	Yes	Chrysotile	7%	Vinyl Asbestos Tile	Projector Room B02 - 9" x 9" Crème With Brown Streak Floor Tile	Yes	Remove		Floor tile is underneath blue sheet flooring
106	Office	Floor	Floor Mastic	Floor Tile Mastic	Yes	Chrysotile	2%	Floor Tile Mastic	119 - 9" x 9" Crème With Brown Streak Floor Tile Mastic	Yes	Remove		
106	Office	Floor	Final Layer	Concrete	No								

Number	Area	Elements	Sub Elements	Material Description	Suspect	Type	Asbestos	ACM Product	Sample Location	Renovation	Action	Removed?	Comments
107		Overhead	Mechanical	Duct Mastic	Yes	Chrysotile	3%	Duct Mastic	119 - Duct Mastic From Overhead Duct	Yes	Remove		
107		Overhead	Plumbing	6in od Lineal Fiberglass Pipe Insulation	No								
107		Overhead	Plumbing	Fiberglass Pipe Fitting	No								
107		Ceiling	Ceiling Surface	Gray Plaster	Yes	No Asbestos Detected							
107		Walls	All	Drywall Mud Compound	Yes	No Asbestos Detected			106/107 - Compilation of Drywall Mud Compound From Walls				
107		Floor	Sheet Flooring	Blue Sheet Flooring	Yes	No Asbestos Detected			B18e Office Space - Sheet Flooring Adjacent Entry				
107		Floor	Floor Tile	9" x 9" Crème With Brown Streak Floor Tile	Yes	Chrysotile	7%	Vinyl Asbestos Tile	Projector Room B02 - 9" x 9" Crème With Brown Streak Floor Tile	Yes	Remove		Floor tile is underneath blue sheet flooring
107		Floor	Floor Mastic	Floor Tile Mastic	Yes	Chrysotile	2%	Floor Tile Mastic	119 - 9" x 9" Crème With Brown Streak Floor Tile Mastic	Yes	Remove		
107		Floor	Final Layer	Concrete	No								
108	Storage	Ceiling	Ceiling Surface	Concrete	No								
108	Storage	Walls	North, West	Cinderblock	No								
108	Storage	Walls	South	Concrete	No								
108	Storage	Walls	East	Drywall Mud Compound									
108	Storage	Walls	East	Plywood	No								
108	Storage	Floor	Sheet Flooring	Blue Sheet Flooring	Yes	No Asbestos Detected			B18e Office Space - Sheet Flooring Adjacent Entry				
109	Loading Dock	Ceiling	Ceiling Surface	Concrete	No								
109	Loading Dock	Ceiling	Electrical	Heat Shield Material	Yes	Chrysotile	70%	Heat Shield Material	B09B Corridor - Heat Shield Material In The Incandescent Light Fixture	Yes	Remove		We recommended replacing the light fixture in the future and disposing of the heat shield material as waste asbestos.

Number	Area	Elements	Sub Elements	Material Description	Susp ect	Type	Asbestos	ACM Product	Sample Location	Renovation	Action	Removed?	Comments
109	Loading Dock	Walls	North, West	Cinderblock	No								
109	Loading Dock	Walls	South	Concrete	No								
109	Loading Dock	Walls	East	Drywall Mud Compound	Yes	No Asbestos Detected			106/107 - Compilation of Drywall Mud Compound From Walls				
109	Loading Dock	Walls	East	Plywood	No								
109	Loading Dock	Floor	Final Layer	Concrete	No								
110	Stairwell	Ceiling	Ceiling Surface	Concrete	No								
110	Stairwell	Walls	North, South, East, West	Cinderblock	No								
110	Stairwell	Walls	Plumbing	12in Fiberglass Pipe Insulation	No								
110	Stairwell	Floor	Final Layer	Concrete	No								
111	Gallery 2c	Ceiling	Ceiling Surface	Metal Slat Ceiling	No								
111	Gallery 2c	Walls	North, South, West	Drywall Mud Compound	Yes	No Asbestos Detected			111 -Compilation of Drywall Mud Compound From Walls	Yes	Demo		Demo the partition walls in 111 Gallery 2c.
111	Gallery 2c	Walls	West	Burlap	No								
111	Gallery 2c	Walls	West	Plywood	No								
111	Gallery 2c	Walls	West	Cinderblock	No								Wall is composed of a false wall with drywall surface followed by a layer of burlap between drywall and plywood. This false wall is framed 8" from the cinderblock wall.
111	Gallery 2c	Floor	Laminate	Wood Grain Laminate Flooring	No								
111	Gallery 2c	Floor	Floor Tile	9" x 9" Crème With Brown Streak Floor Tile	Yes	Chrysotile	7%	Vinyl Asbestos Tile	Projector Room B02 - 9" x 9" Crème With Brown Streak Floor Tile	Yes	Remove		Floor tile is below the laminate.

Number	Area	Elements	Sub Elements	Material Description	Susp ect	Type	Asbestos	ACM Product	Sample Location	Renovation	Action	Removed?	Comments
111	Gallery 2c	Floor	Floor Mastic	Floor Tile Mastic	Yes	Chrysotile	2%	Floor Tile Mastic	119 - 9" x 9" Crème With Brown Streak Floor Tile Mastic	Yes	Remove		
111	Gallery 2c	Floor	Final Layer	Concrete	No								
112	Gallery 3	Ceiling Space	Plumbing	Transite Pipe	Yes	Chrysotile/ Crocidolite	40%/10%	Transite Pipe	200 - Transite Pipe Above Ceiling - Visible From Access Hatch	Yes	Remove		A section of transite pipe runs north-south in the ceiling space of Rm.112 and Rm. 200. An 18-foot section of this pipe is abandoned. Remove the abandon section.
112	Gallery 3	Ceiling	Ceiling Tile Mastic	Mastic	Yes	No Asbestos Detected			201 - Ceiling Tile Mastic				
112	Gallery 3	Ceiling	Ceiling Surface	Ceiling Tile	Yes	No Asbestos Detected			201 -2"x2" Fiberglass Ceiling Tile				
112	Gallery 3	Walls	North, East	Transite Pipe	Yes	Chrysotile/ Crocidolite	40%/10%	Transite Pipe	200 - Transite Pipe Above Ceiling - Visible From Access Hatch	No	Manage		Transite Pipe is located in the Northeast Corner rising up from vault.
112	Gallery 3	Walls	South	Textured Drywall Mud Compound	Yes	Chrysotile	2%	Textured Drywall Mud Compound	112 Gallery #3 - Textured Drywall Mud Compound Adjacent IT Storage Room 115	Yes	Remove		Texture mud compound on stairs in south half of room.
112	Gallery 3	Walls	North	Drywall Mud Compound	Yes	No Asbestos Detected			112 Gallery 3 - Drywall Mud Compound North Wall Adjacent Exit				The North, East and West walls are comprised of a false wall in front of the cinderblock wall. The False wall Consists of 2 layers of drywall over 3/4in plywood sheeting with 1 layer of burlap material in between.
112	Gallery 3	Walls	North, West, South	Drywall Mud Compound	Yes	No Asbestos Detected			112 Gallery 3 -Compilation of Drywall Mud Compound From Walls on West Half of Gallery 3				
112	Gallery 3	Walls	North, East, South	Drywall Mud Compound	Yes	No Asbestos Detected			112 Gallery 3 -Compilation of Drywall Mud Compound From Walls on East Half of Gallery 3				
112	Gallery 3	Walls	North, East, West	Burlap	No								
112	Gallery 3	Walls	North, East, West	Plywood	No								

Number	Area	Elements	Sub Elements	Material Description	Suspect	Type	Asbestos	ACM Product	Sample Location	Renovation	Action	Removed?	Comments
112	Gallery 3	Walls	North, East, West	Cinderblock	No								
112	Gallery 3	Floor	Laminate	Wood Grain Laminate Flooring	No								
112	Gallery 3	Floor	Floor Tile	9" x 9" Crème With Brown Streak Floor Tile	Yes	Chrysotile	7%	Vinyl Asbestos Tile	Projector Room B02 - 9" x 9" Crème With Brown Streak Floor Tile	Yes	Remove		Floor tile is below the laminate.
112	Gallery 3	Floor	Floor Mastic	Floor Tile Mastic	Yes	Chrysotile	2%	Floor Tile Mastic	119 - 9" x 9" Crème With Brown Streak Floor Tile Mastic	Yes	Remove		
112	Gallery 3	Floor	Final Layer	Concrete	No								
113	Gallery 2a	Ceiling	Ceiling Surface	Metal Slat Ceiling	No								
113	Gallery 2a	Walls	North, South, East	Drywall Mud Compound	Yes	No Asbestos Detected			113 - Compilation of Drywall Mud Compound From Walls	Yes	Demo		The East wall is comprised of a false wall in front of the cinderblock wall. The False wall Consists of 1 layer of drywall over 3/4in plywood sheeting with 1 layer of burlap material in between. Demo the partition walls.
113	Gallery 2a	Walls	East	Burlap	No								
113	Gallery 2a	Walls	East	Plywood	No								
113	Gallery 2a	Walls		Cinderblock	No								
113	Gallery 2a	Floor	Laminate	Wood Grain Laminate Flooring	No								
113	Gallery 2a	Floor	Floor Tile	9" x 9" Crème With Brown Streak Floor Tile	Yes	Chrysotile	7%	Vinyl Asbestos Tile	Projector Room B02 - 9" x 9" Crème With Brown Streak Floor Tile	Yes	Remove		Floor tile is below the laminate.
113	Gallery 2a	Floor	Floor Mastic	Floor Tile Mastic	Yes	Chrysotile	2%	Floor Tile Mastic	119 - 9" x 9" Crème With Brown Streak Floor Tile Mastic	Yes	Remove		
113	Gallery 2a	Floor	Final Layer	Concrete	No								
114	Gallery 2b	Ceiling Space	Ceiling Space	Plaster Base Coat	Yes	No Asbestos Detected			114 Gallery 2B South Wall West Face - Plaster In Access Hatch				

Number	Area	Elements	Sub Elements	Material Description	Susp ect	Type	Asbestos	ACM Product	Sample Location	Renovation	Action	Removed?	Comments
114	Gallery 2b	Ceiling	Ceiling Surface	Metal Slat Ceiling	No								
114	Gallery 2b	Walls	South	Drywall Mud Compound	Yes	No Asbestos Detected			114 Gallery 2B South Wall West Face - Drywall Mud Compound	Yes	Demo		Demo the partition in 114 Gallery 2b to the south of 115 Storage.
114	Gallery 2b	Floor	Laminate	Wood Grain Laminate Flooring	No								
114	Gallery 2b	Floor	Floor Tile	9" x 9" Crème With Brown Streak Floor Tile	Yes	Chrysotile	7%	Vinyl Asbestos Tile	Projector Room B02 - 9" x 9" Crème With Brown Streak Floor Tile	Yes	Remove		Floor tile is below the laminate.
114	Gallery 2b	Floor	Floor Mastic	Floor Tile Mastic	Yes	Chrysotile	2%	Floor Tile Mastic	119 - 9" x 9" Crème With Brown Streak Floor Tile Mastic	Yes	Remove		
114	Gallery 2b	Floor	Final Layer	Concrete	No								
115	IT Storage	Ceiling	Ceiling Surface	Metal Slat Ceiling	No								
115	IT Storage	Ceiling	Ceiling Surface	Plywood	No								
115	IT Storage	Walls	All	Drywall Mud Compound	Yes	No Asbestos Detected			114 Gallery 2B South Wall West Face - Drywall Mud Compound	Yes	Demo		Demo the 115 Storage walls.
115	IT Storage	Floor	Concrete Floor	Concrete/Plaster Flooring With Burlap	Yes	No Asbestos Detected			115 IT Storage Room Small Storage - Concrete/Plaster Flooring With Burlap				
115	IT Storage	Floor	Floor Tile	1' x 1' Floor Tile Light/Dark Gray Steak	Yes	Chrysotile	2%	Vinyl Asbestos Tile	115 IT Storage Room - 1' x 1' Floor Tile Light/Dark Gray Steak	Yes	Remove		
115	IT Storage	Floor	Final Layer	Concrete	No								
116	Stairs	Ceiling	Ceiling Tile Mastic	Mastic	Yes	No Asbestos Detected			201 - Ceiling Tile Mastic				
116	Stairs	Ceiling	Ceiling Surface	Ceiling Tile	Yes	No Asbestos Detected			201 -2"x2" Fiberglass Ceiling Tile				

Number	Area	Elements	Sub Elements	Material Description	Suspect	Type	Asbestos	ACM Product	Sample Location	Renovation	Action	Removed?	Comments
116	Stairs	Walls	Walls/Railings	Textured Drywall Mud Compound	Yes	Chrysotile	2%	Drywall Mud Compound	112 Gallery #3 - Textured Drywall Mud Compound Adjacent IT Storage Room 115	Yes	Remove		Texture mud compound on stairs in south half of room. Demo the stairwell walls.
116	Stairs	Floor	Carpet	Blue Carpet	No								
116	Stairs	Floor	Carpet	Carpet Mastic	Yes	No Asbestos Detected			200 - Carpet Mastic				
116	Stairs	Floor	Final Layer	Concrete	No								
117	Mendel Salon	Walls	West	Drywall Mud Compound	Yes	No Asbestos Detected			117 Mendel Salon - Drywall Mud Compound on Upper West Wall				
117	Mendel Salon	Walls	All	Drywall Mud Compound	Yes	No Asbestos Detected			117 Mendel Salon - Compilation of Drywall Mud Compound From Walls- Joint Compound 1	Yes	Demo		The walls are comprised of a false wall in front of the cinderblock wall. The False wall Consists of 1 layer of drywall over 3/4in plywood sheeting with 1 layer of burlap material in between. Demo the partition wall on the south portion of the 117 Mendel Salon, wall in southwest corner and partition wall in northeast corner.
117	Mendel Salon	Walls	All	Drywall Mud Compound	Yes	No Asbestos Detected			117 Mendel Salon - Compilation of Drywall Mud Compound From Walls- Joint Compound 2				
117	Mendel Salon	Walls	East	Drywall Mud Compound	Yes	No Asbestos Detected			117 Mendel Salon - Drywall Mud Compound from 2nd False Wall of East Wall				The East wall Consists of one false wall consisting of drywall overlaying 3/4in plywood with one layer of burlap in between. This wall is supported by steel stud framing followed by a 6in cavity after which is another false wall. The second false wall is drywall with a layer of burlap and 3/4in plywood as well, and is supported by wood framing. Behind the second false wall is a 6in cavity before the brick exterior layer.
117	Mendel Salon	Walls	All	Burlap	No								
117	Mendel Salon	Walls	All	Plywood	No								
117	Mendel Salon	Walls	West	Duct Mastic	Yes	Chrysotile	3%	Duct Mastic	119 - Duct Mastic From Overhead Duct	Yes	Remove		Duct Mastic was observed on ducts within the wall on the west wall of the room.
117	Mendel Salon	Floor	Laminate	Wood Grain Laminate Flooring	No								

Number	Area	Elements	Sub Elements	Material Description	Suspect	Type	Asbestos	ACM Product	Sample Location	Renovation	Action	Removed?	Comments
117	Mendel Salon	Floor	Floor Tile	9" x 9" Crème With Brown Streak Floor Tile	Yes	Chrysotile	7%	Vinyl Asbestos Tile	Projector Room B02 - 9" x 9" Crème With Brown Streak Floor Tile	Yes	Remove		Floor tile is below the laminate.
117	Mendel Salon	Floor	Floor Mastic	Floor Tile Mastic	Yes	Chrysotile	2%	Floor Tile Mastic	119 - 9" x 9" Crème With Brown Streak Floor Tile Mastic	Yes	Remove		
117	Mendel Salon	Floor	Leveling Compound	Concrete Leveler	Yes	No Asbestos Detected			117 Mendel Salon - Leveling Compound From Under Laminate Flooring				
117	Mendel Salon	Floor	Final Layer	Concrete	No								
119	Gallery 1	Ceiling	Ceiling Surface	Concrete	No								
119	Gallery 1	Overhead	Beam	Wood Beams	No								
119	Gallery 1	Walls	All	Drywall Mud Compound 1	Yes	No Asbestos Detected			119 Gallery 1 - Compilation of Drywall Mud Compound From Walls- Joint Compound 1	Yes	Demo		The walls are comprised of a false wall in front of the cinderblock wall. The False wall Consists of 1 layer of drywall over 3/4in plywood sheeting with 1 layer of burlap material in between. Demo the partition wall on the north portion of 119, wall portion in the southwest corner, northwest corner and southeast corner.
119	Gallery 1	Walls	All	Drywall Mud Compound 2	Yes	No Asbestos Detected			119 Gallery 1 - Compilation of Drywall Mud Compound From Walls- Joint Compound 2	Yes	Demo		The walls are comprised of a false wall in front of the cinderblock wall. The False wall Consists of 1 layer of drywall over 3/4in plywood sheeting with 1 layer of burlap material in between. Demo the partition wall on the north portion of 119, wall portion in the southwest corner, northwest corner and southeast corner.
119	Gallery 1	Walls	South	Duct Mastic	Yes	Chrysotile	3%	Duct Mastic	119 - Duct Mastic From Overhead Duct	Yes	Remove		Duct Mastic was observed on ducts within the wall on the south wall of the room.
119	Gallery 1	Walls	East, West	Plaster	Yes	No Asbestos Detected			119 - Plaster from west wall above drywall				
119	Gallery 1	Floor	Laminate	Wood Grain Laminate Flooring	No								
119	Gallery 1	Floor	Floor Tile	9" x 9" Crème With Brown Streak Floor Tile	Yes	Chrysotile	7%	Vinyl Asbestos Tile	Projector Room B02 - 9" x 9" Crème With Brown Streak Floor Tile	Yes	Remove		Floor tile is below the laminate.

Number	Area	Elements	Sub Elements	Material Description	Suspect	Type	Asbestos	ACM Product	Sample Location	Renovation	Action	Removed?	Comments
119	Gallery 1	Floor	Floor Mastic	Floor Tile Mastic	Yes	Chrysotile	2%	Floor Tile Mastic	119 - 9" x 9" Crème With Brown Streak Floor Tile Mastic	Yes	Remove		
119	Gallery 1	Floor	Final Layer	Concrete	No								
120	Kitchen	Ceiling Space	Mechanical	Duct Mastic	Yes	Chrysotile	3%	Duct Mastic	119 - Duct Mastic From Overhead Duct	Yes	Remove		
120	Kitchen	Ceiling Space	3rd Layer	Plaster Base Coat	Yes	Chrysotile	2%	Plaster	101 - Ceiling Plaster from Ceiling Space above South Middle Light	Yes	Remove		
120	Kitchen	Ceiling	2nd Layer	Stipple Texture	Yes	Chrysotile	15%	Stipple Ceiling Texture	B01 - Lobby - Stipple Textured Ceiling Material	Yes	Remove		Stipple is located above the inaccessible ceiling.
120	Kitchen	Ceiling	Ceiling Surface	Drywall Mud Compound	Yes	No Asbestos Detected			122 -Compilation of Drywall Mud Compound From Walls - Joint Compound	Yes	Remove		
120	Kitchen	Walls	All	Skim coat	Yes	No Asbestos Detected			120 Kitchen - Plaster Skim Coat South Wall Behind Dishwasher & Sink				
120	Kitchen	Walls	All	Base Coat	Yes	No Asbestos Detected			120 Kitchen - Plaster Base Coat South Wall Behind Dishwasher & Sink				
120	Kitchen	Floor	Floor Tile	9" x 9" Crème With Brown Streak Floor Tile	Yes	Chrysotile	7%	Vinyl Asbestos Tile	Projector Room B02 - 9" x 9" Crème With Brown Streak Floor Tile	Yes	Remove		
120	Kitchen	Floor	Floor Mastic	Floor Tile Mastic	Yes	Chrysotile	2%	Floor Tile Mastic	119 - 9" x 9" Crème With Brown Streak Floor Tile Mastic	Yes	Remove		
120	Kitchen	Floor	Final Layer	Concrete	No								
121	Kitchen Storage	Ceiling Space	Mechanical	Duct Mastic	Yes	Chrysotile	3%		119 - Duct Mastic From Overhead Duct	Yes	Remove		

Number	Area	Elements	Sub Elements	Material Description	Suspect	Type	Asbestos	ACM Product	Sample Location	Renovation	Action	Removed?	Comments
121	Kitchen Storage	Ceiling Space	3rd Layer	Plaster Base Coat	Yes	Chrysotile	2%	Plaster	101 - Ceiling Plaster from Ceiling Space above South Middle Light	Yes	Remove		
121	Kitchen Storage	Ceiling	2nd Layer	Stipple Texture	Yes	Chrysotile	15%	Stipple Ceiling Texture	B01 - Lobby - Stipple Textured Ceiling Material	Yes	Remove		Stipple is located above the inaccessible ceiling.
121	Kitchen Storage	Walls	All	Skim Coat	Yes	No Asbestos Detected			120 Kitchen - Plaster Skim Coat South Wall Behind Dishwasher & Sink				
121	Kitchen Storage	Walls	All	Base Coat	Yes	No Asbestos Detected			120 Kitchen - Plaster Base Coat South Wall Behind Dishwasher & Sink				
121	Kitchen Storage	Floor	Floor Tile	Ceramic Tile	No								
121	Kitchen Storage	Floor	Final Layer	Concrete	No								
122	Tea Salon	Ceiling Space	2nd Layer	Plaster Base Coat	Yes	Chrysotile	2%	Plaster	101 - Ceiling Plaster from Ceiling Space above South Middle Light	Yes	Remove		
122	Tea Salon	Ceiling	Ceiling Surface	Stipple Texture	Yes	Chrysotile	15%	Stipple Ceiling Texture	B01 - Lobby - Stipple Textured Ceiling Material	Yes	Remove		
122	Tea Salon	Walls	South	Drywall Mud Compound	Yes	No Asbestos Detected			122 Tea Salon - Drywall Mud Compound Upper South Wall Above Windows				
122	Tea Salon	Walls	South, West	Concrete Pillar	Yes	No Asbestos Detected			122 Tea Salon - Cement on Southwest Pillar Adjacent Entry				
122	Tea Salon	Walls	West	Drywall Mud Compound	Yes	No Asbestos Detected			122 -Compilation of Drywall Mud Compound From Walls - Joint Compound	Yes	Demo		Demo a portion of the west wall in the northwest corner of the room.

Number	Area	Elements	Sub Elements	Material Description	Suspect	Type	Asbestos	ACM Product	Sample Location	Renovation	Action	Removed?	Comments
122	Tea Salon	Walls	West	Drywall Mud Compound	Yes	No Asbestos Detected			122 -Compilation of Drywall Mud Compound From Walls - Skim Coat	Yes	Demo		Demo a portion of the west wall in the northwest corner of the room.
122	Tea Salon	Floor	Floor Tile	Ceramic Tile	No								
122	Tea Salon	Floor	Final Layer	Concrete	No								
123	Vestibule	Ceiling Space	2nd Layer	Plaster Base Coat	Yes	Chrysotile	2%	Plaster	101 - Ceiling Plaster from Ceiling Space above South Middle Light	Yes	Remove		
123	Vestibule	Ceiling	Ceiling Texture	Stipple Ceiling Texture	Yes	Chrysotile	15%	Stipple Ceiling Texture	B01 - Lobby - Stipple Textured Ceiling Material	Yes	Remove		
123	Vestibule	Walls	South, East	10in Fiberglass Lineal Pipe Insulation	No								In the southeast corner of the vestibule is a vertical plumbing stack wrapped in fiberglass pipe insulation and pvc jacket.
123	Vestibule	Walls	North, East, West	Drywall Mud Compound	Yes	No Asbestos Detected			124 -Compilation of Drywall Mud Compound From Walls				
123	Vestibule	Floor	Floor Tile	Ceramic Tile	No								
123	Vestibule	Floor	Final Layer	Concrete	No								
124	Washroom	Ceiling Space		Plaster Base Coat	Yes	No Asbestos Detected			124 Washroom - Plaster Above Ceiling Access Hatch	Yes	Remove		
124	Washroom	Ceiling	Ceiling Surface	Stipple Texture	Yes	Chrysotile	15%	Stipple Ceiling Texture	B01 - Lobby - Stipple Textured Ceiling Material	Yes	Remove		
124	Washroom	Walls	All	Drywall Mud Compound	Yes	No Asbestos Detected			124 -Compilation of Drywall Mud Compound From Walls				
124	Washroom	Floor	Floor Tile	Ceramic Tile	No								
124	Washroom	Floor	Final Layer	Concrete	No								
125	Coat Room	Ceiling Space		Plaster Base Coat	Yes	No Asbestos Detected			124 Washroom - Plaster Above Ceiling Access Hatch	Yes	Remove		

Number	Area	Elements	Sub Elements	Material Description	Suspect	Type	Asbestos	ACM Product	Sample Location	Renovation	Action	Removed?	Comments
125	Coat Room	Ceiling	Ceiling Surface	Stipple Texture	Yes	Chrysotile	15%	Stipple Ceiling Texture	B01 - Lobby - Stipple Textured Ceiling Material	Yes	Remove		
125	Coat Room	Walls	All	Drywall Mud Compound	Yes	No Asbestos Detected			125 -Compilation of Drywall Mud Compound From Walls				
125	Coat Room	Floor	Floor Tile	Ceramic Tile	No								
125	Coat Room	Floor	Final Layer	Concrete	No								
127	Vestibule	Ceiling	Ceiling Surface	Drywall Mud Compound	Yes	No Asbestos Detected			127 -Compilation of Drywall Mud Compound From Walls				
127	Vestibule	Walls	All	Aluminum Frame Windows	No								
127	Vestibule	Walls	West	Drywall Mud Compound	Yes	No Asbestos Detected			127 -Compilation of Drywall Mud Compound From Walls				
127	Vestibule	Floor	Carpet	Gray Carpet	No								
127	Vestibule	Floor	Final Layer	Concrete	No								
128	Conservatory	Ceiling	Ceiling Panels	Fiberglass Ceiling Panel	Yes	No Asbestos Detected			128 Conservatory Roof - Ceiling Panels				
128	Conservatory	Roof		Grey Caulking	Yes	No Asbestos Detected			128 Conservatory Roof - Grey Caulking on Edge of Fiberglass Ceiling Panel				
128	Conservatory	Walls	North	Transite Board	Yes	Chrysotile	30%	Transite Board	128 Conservatory - Transite Board	Yes	Remove		
128	Conservatory	Walls	North	Drywall Mud Compound	Yes	No Asbestos Detected			102 - Compilation of Drywall Mud Compound From Walls	Yes	Remove		
128	Conservatory	Window	Putty	White Glazing Putty	Yes	Chrysotile	1%	Glazing Putty	128 Conservatory - White Glazing Putty From North Exterior Rooftop	No	Manage		The white glazing putty contains asbestos. The material will be managed until it is determined the window sections will be affected by a renovation or demolition.
128	Conservatory	Fountain		Mortar	Yes	No Asbestos Detected			128 Conservatory - Mortar on Rock Water Fountain				
S1	Stairwell	Stairs		Concrete	No								

Number	Area	Elements	Sub Elements	Material Description	Suspect	Type	Asbestos	ACM Product	Sample Location	Renovation	Action	Removed?	Comments
S2	Stairwell	Stairs		Concrete	No								
S3	Stairwell	Stairs		Concrete	No								
S4	Stairwell	Stairs		Concrete	No								
200	Director	Ceiling Space	Plumbing	Transite Pipe	Yes	Chrysotile/ Crocidolite	40%/10%	Transite Pipe	200 - Transite Pipe Above Ceiling, Visible From Access Hatch	Yes	Remove		A section of transite pipe runs north-south in the ceiling space of Rm.112 and Rm. 200. An 18-foot section of this pipe is abandoned. Remove the abandon section.
200	Director	Ceiling	2nd Layer	Drywall Mud Compound	Yes	Chrysotile	2%	Drywall Mud Compound	200-204 Compilation of Drywall Mud Compound From Ceiling of Mezzanine Offices	Yes	Remove		
200	Director	Ceiling	Mastic	Ceiling Tile Mastic	Yes	No Asbestos Detected			201 - Ceiling Tile Mastic				
200	Director	Ceiling	Ceiling Tile	2"x2" Fiberglass Ceiling Tile	Yes	No Asbestos Detected			201 -2"x2" Fiberglass Ceiling Tile				
200	Director	Walls	All	Drywall Mud Compound	Yes	No Asbestos Detected			200 Director Office - Drywall Mud Compound				
200	Director	Walls	All	Drywall Mud Compound	Yes	No Asbestos Detected			200 - Compilation of Drywall Mud Compound from Walls				
200	Director	Floor	Carpet	Blue Carpet	No								
200	Director	Floor	2nd Layer	Carpet Mastic	Yes	No Asbestos Detected			200 - Carpet Mastic				
200	Director	Floor	Final Layer	Concrete	No								
201	Curator	Ceiling Space	Plumbing	Fiberglass Pipeline Fitting	No								
201	Curator	Ceiling	2nd Layer	Drywall Mud Compound	Yes	Chrysotile	2%	Drywall Mud Compound	200-204 Compilation of Drywall Mud Compound From Ceiling of Mezzanine Offices	Yes	Remove		
201	Curator	Ceiling	Mastic	Ceiling Tile Mastic	Yes	No Asbestos Detected			201 - Ceiling Tile Mastic				

Number	Area	Elements	Sub Elements	Material Description	Suspect	Type	Asbestos	ACM Product	Sample Location	Renovation	Action	Removed?	Comments
201	Curator	Ceiling	Ceiling Tile	2"x2" Fiberglass Ceiling Tile	Yes	No Asbestos Detected			201 -2"x2" Fiberglass Ceiling Tile				
201	Curator	Walls	All	Drywall Mud Compound	Yes	No Asbestos Detected			201 - Compilation of Drywall Mud Compound from Walls				
201	Curator	Floor	Carpet	Blue Carpet	No								
201	Curator	Floor	2nd Layer	Carpet Mastic	Yes	No Asbestos Detected			200 - Carpet Mastic				
201	Curator	Floor	Final Layer	Concrete	No								
202a	Clerk Office	Ceiling	2nd Layer	Drywall Mud Compound	Yes	Chrysotile	2%	Drywall Mud Compound	200-204 Compilation of Drywall Mud Compound From Ceiling of Mezzanine Offices	Yes	Remove		
202a	Clerk Office	Ceiling	Mastic	Ceiling Tile Mastic	Yes	No Asbestos Detected			201 - Ceiling Tile Mastic				
202a	Clerk Office	Ceiling	Ceiling Tile	2"x2" Fiberglass Ceiling Tile	Yes	No Asbestos Detected			201 -2"x2" Fiberglass Ceiling Tile				
202a	Clerk Office	Walls	All	Drywall Mud Compound	Yes	No Asbestos Detected			202a -Compilation of Drywall Mud Compound From Walls				
202a	Clerk Office	Floor	Carpet	Blue Carpet	No								
202a	Clerk Office	Floor	2nd Layer	Carpet Mastic	Yes	No Asbestos Detected			200 - Carpet Mastic				
202a	Clerk Office	Floor	Final Layer	Concrete	No								
202b	File Area	Ceiling	2nd Layer	Drywall Mud Compound	Yes	Chrysotile	2%	Drywall Mud Compound	200-204 Compilation of Drywall Mud Compound From Ceiling of Mezzanine Offices	Yes	Remove		
202b	File Area	Ceiling	Mastic	Ceiling Tile Mastic	Yes	No Asbestos Detected			201 - Ceiling Tile Mastic				
202b	File Area	Ceiling	Ceiling Tile	2"x2" Fiberglass Ceiling Tile	Yes	No Asbestos Detected			201 -2"x2" Fiberglass Ceiling Tile				

Number	Area	Elements	Sub Elements	Material Description	Suspect	Type	Asbestos	ACM Product	Sample Location	Renovation	Action	Removed?	Comments
202b	File Area	Walls	All	Drywall Mud Compound	Yes	No Asbestos Detected			202a -Compilation of Drywall Mud Compound From Walls				
202b	File Area	Floor	Carpet	Blue Carpet	No								
202b	File Area	Floor	2nd Layer	Carpet Mastic	Yes	No Asbestos Detected			200 - Carpet Mastic				
202b	File Area	Floor	Final Layer	Concrete	No								
203	Clerk Office	Ceiling	2nd Layer	Drywall Mud Compound	Yes	Chrysotile	2%	Drywall Mud Compound	200-204 Compilation of Drywall Mud Compound From Ceiling of Mezzanine Offices	Yes	Remove		
203	Clerk Office	Ceiling	Mastic	Ceiling Tile Mastic	Yes	No Asbestos Detected			201 - Ceiling Tile Mastic				
203	Clerk Office	Ceiling	Ceiling Tile	2"x2" Fiberglass Ceiling Tile	Yes	No Asbestos Detected			203 Clerk Office - 2' x 2' Grey Ceiling Tile				
203	Clerk Office	Ceiling	Ceiling Tile	Plaster Skim On Bottom Side Of Ceiling Tile	Yes	No Asbestos Detected			203 Clerk Office -Plaster Skim On Bottom Side Of Ceiling Tile				
203	Clerk Office	Walls	All	Drywall Mud Compound	Yes	No Asbestos Detected			203 - Compilation of Drywall Mud Compound From Walls				
203	Clerk Office	Floor	Carpet	Blue Carpet	No								
203	Clerk Office	Floor	2nd Layer	Carpet Mastic	Yes	No Asbestos Detected			200 - Carpet Mastic				
203	Clerk Office	Floor	Final Layer	Concrete	No								
204	Washroom	Ceiling	2nd Layer	Drywall Mud Compound	Yes	Chrysotile	2%	Drywall Mud Compound	200-204 Compilation of Drywall Mud Compound From Ceiling of Mezzanine Offices	Yes	Remove		
204	Washroom	Walls	All	Drywall Mud Compound	Yes	No Asbestos Detected			203 - Compilation of Drywall Mud Compound From Walls				
204	Washroom	Floor	Sheet Flooring	Gray Sheet Flooring	Yes	No Asbestos Detected			204 Washroom - Sheet Flooring				

Number	Area	Elements	Sub Elements	Material Description	Suspect	Type	Asbestos	ACM Product	Sample Location	Renovation	Action	Removed?	Comments
204	Washroom	Floor	Final Layer	Concrete	No								
205	Business Manager	Ceiling Space	Debris	Debris	Yes	No Asbestos Detected		Debris	205 Business Manager Office - Tar/Debris In South East Corner Above Access Hatch Above Suspended Ceiling				
205	Business Manager	Ceiling	3rd Layer	Drywall Mud Compound	Yes	Chrysotile	3%	Drywall Mud Compound	205 Business Manager Office - Drywall Mud Compound Above Suspended Ceiling	Yes	Remove		
205	Business Manager	Ceiling	Mastic	Ceiling Tile Mastic	Yes	No Asbestos Detected			201 - Ceiling Tile Mastic				
205	Business Manager	Ceiling	Ceiling Tile	2"x2" Fiberglass Ceiling Tile	Yes	No Asbestos Detected			203 Clerk Office - 2' x 2' Grey Ceiling Tile				
205	Business Manager	Ceiling	Ceiling Tile	2' x 2' Fissure & Pinhole Ceiling Tile	Yes	No Asbestos Detected			205 Business Manager Office - 2' x 2' Fissure & Pinhole Ceiling Tile				
205	Business Manager	Walls	All	Drywall Mud Compound	Yes	No Asbestos Detected			205 Business Manager Office - Wall/Ceiling Plaster				
205	Business Manager	Walls	All	Drywall Mud Compound	Yes	No Asbestos Detected			205 - Compilation of Drywall Mud Compound From Walls				
205	Business Manager	Floor	Carpet	Blue Carpet	No								
205	Business Manager	Floor	2nd Layer	Carpet Mastic	Yes	No Asbestos Detected			200 - Carpet Mastic				
205	Business Manager	Floor	Final Layer	Concrete	No								

Number	Area	Elements	Sub Elements	Material Description	Suspect	Type	Asbestos	ACM Product	Sample Location	Renovation	Action	Removed?	Comments
Exterior	Roof	Roof	Boiler Stack	Boiler Breeching	Yes	No Asbestos Detected			Rooftop - Insulation Within The Boiler Breeching Stack Between The Inner And Outer Cladding.				



**City of Saskatoon
Mendel Art Gallery
Asbestos Survey Report**



December 2015

Prepared For: City of Saskatoon - Infrastructure Services – Facilities Branch
Mendel Art Gallery
950 Spadina Crescent East, Saskatoon, SK.
Attn: Brent Anderson

Prepared By: Bersch & Associates Ltd.
Project No. : B67SRL06

1.0 EXECUTIVE SUMMARY

The survey of Mendel Art Gallery located at 950 Spadina Crescent East, in Saskatoon, Saskatchewan entailed the inspection of all accessible suspect asbestos containing material (ACM) located throughout the facility. Materials inspected included: mechanical insulating material, pipeline fitting compound, drywall mud compound, asbestos gasket material, vinyl asbestos floor material, heat shield material, stipple textured ceiling material, ceiling tiles, wall and ceiling plaster, spray-applied fireproofing and transite cement board.

Bulk sample analysis results indicate the presence of “Chrysotile” asbestos within the Mendel Art Gallery located in Saskatoon, SK. Please refer to **Appendix I for Bulk Sample Analysis** results. The recommended actions to be implemented in reference to the ACM identified are Management, removal, encapsulate, repair and clean-up. Please refer to section 5 Asbestos Abatement Discussion for definitions. It should be noted that the recommendation of “Management” as part of the asbestos action plan is based upon the premise that renovations are not scheduled throughout the area that would impact the asbestos containing material present. ***Prior to any major renovation/demolition activity, a destructive investigation is recommended to identify any inaccessible ACM that is physically concealed or isolated in areas such as enclosed wall/ceiling/floor cavities and pipe chases. Further testing of drywall mud compound may also be required prior to renovation.*** Asbestos was detected in the following forms throughout the facility:

- **Mechanical Insulation** is located in the B04 Boiler Room, B07 Elevator Room and B29 Transformer Vault of the facility. Refer to the Asbestos Survey Database in **Appendix II** of this report. All accessible asbestos-containing mechanical insulation located within the facility has been identified with “ASBESTOS” or “ACM” in red stencil. All insulation on such lines shall be considered to be asbestos-containing or contaminated.
- **Pipe Fitting Mud Compound** is located on various pipe elbows, “T” fittings and hangers on mechanical piping throughout various locations throughout the facility. Refer to the Asbestos Survey Database in **Appendix II** of this report. All accessible asbestos-containing pipe fittings have been identified with a red dot of spray paint. **It is suspected that additional pipe fitting mud compounds are present above inaccessible enclosed ceiling spaces and wall cavities of the facility. Prior to any major renovation activity throughout the facility, a destructive investigation is recommended. All pipefitting mud compound located within enclosed or inaccessible areas shall assume to be asbestos containing until laboratory analysis proves otherwise.**
- **Asbestos gasket** is located in B14 Mechanical room of the facility. Refer to the Asbestos Survey Database in **Appendix II** of this report.
- **Drywall Mud Compound** is located in various locations throughout the facility. Refer to the Asbestos Survey Database in **Appendix II** of this report.
- **Stipple Textured Ceiling Material** is located in various locations throughout the facility. Refer to the Asbestos Survey Database in **Appendix II** of this report and **Appendix III** floor plans for the location of the areas containing the material.

- **Vinyl Asbestos Tile** is located in various locations throughout the facility. Refer to the Asbestos Survey Database in *Appendix II* of this report and *Appendix III* floor plans for the location of the areas containing the material.
- **Transite Asbestos Cement Board** is located within the 128 Conservatory above the entryway. Refer to the Asbestos Survey Database in *Appendix II* of this report and *Appendix III* floor plans for the location of the areas containing the material.
- **Plaster Base Coat Material** is located within the B18 office space. Refer to the Asbestos Survey Database in *Appendix II* of this report.
- **Asbestos Fire-Stop Material** is located within B06 Workshop. Refer to the Asbestos Survey Database in *Appendix II* of this report.
- **The Block Walls** throughout the facility were inspected for Vermiculite content as some forms of Vermiculite do contain asbestos. No Vermiculite was observed during the asbestos inspection activity. However, a thorough destructive investigation is recommended prior to building demolition to ensure the absence of vermiculite asbestos material.

Throughout the survey of the Mendel Art Gallery, the Asbestos Containing Materials were assessed and given a Priority Rating of One, Two or Three, with Priority One being the items requiring the most immediate attention. There are a total of nine (9) Priority One Items. See the **Survey Spreadsheet Database** in *Appendix II* for a room-by-room account.

Bersch & Associates Ltd. implemented the use of doorjamb labels that are applied to all the doorjambs of the rooms containing asbestos within the facility. This permits anyone accessing the room to easily identify the ACM present without having to reference the written report. Legends providing explanation of the abbreviations used on doorjambs were placed on the backside of all maintenance/custodial doors within the facility. Employees and contractors will use the legend as a reference to identify ACM within the areas they are working.

2.0 INTRODUCTION

Bersch & Associates Ltd. was retained by the City of Saskatoon to conduct an Asbestos Survey and Hazard Assessment of the Mendel Art Gallery located in Saskatoon, SK. The survey entailed the inspection of all accessible areas of the facility; including ceiling spaces and pipe chases. The purpose of the survey was to locate, identify and assess the condition of all Asbestos Containing Materials (ACM) located throughout the facility. This report gives a detailed account of the inspection results and our firm's recommendations on control options to be implemented to bring the facility in compliance with the Province of Saskatchewan Occupational Health and Safety Act and Regulations. Bersch & Associates Ltd. conducted the survey in October / November 2015. A review of this report shall be conducted with all trades that are entering the facility to perform maintenance or renovation activity. This will ensure they are familiar with the types and locations of asbestos-containing materials present and prevent any uncontrolled disturbance and/or possible exposure to asbestos.

3.0 METHODOLOGY

Bersch & Associates Ltd. conducted the survey of the Mendel Art Gallery building located in Saskatoon, SK in October / November of 2015. The primary documents for guidance and criteria in this survey were the Province of Saskatchewan “Occupational Health and Safety Act and Regulations, 1996”, Province of Saskatchewan “Managing Asbestos”, and the U.S. Environmental Protection Agency “Guidance for Controlling Asbestos Containing Materials in Buildings”. The USEPA document identifies factors associated with the “condition” and the “potential for disturbance or erosion” of asbestos containing materials (ACM). These factors help to determine potential for exposure to ACM and were used to make a qualitative evaluation of the material. It should be noted that the recommendation of “Management” Asbestos Abatement Action is based upon the premise that renovations are not scheduled in that area that will require disturbing or violating the asbestos containing material. In the event that renovations are scheduled that impact upon the areas of asbestos containing material then pre-removal of the asbestos containing materials may be necessary.

In total, ninety-four (96) bulk samples of suspect asbestos-containing materials were collected throughout the facility. Asbestos was identified within thirty-two (32) of the samples collected. Refer to Appendix I for a copy of the Bulk Sample Analysis Report. All bulk samples collected were analyzed by Bersch & Associates Ltd. laboratory in accordance with the current USEPA 600/R-93/116 Method for the analysis of asbestos in building materials using polarized light microscopy and dispersion staining techniques. The detection limit of this method is listed as <1% by volume.

4.0 RECOMMENDATIONS:

Throughout the survey of the Mendel Art Gallery, the Asbestos Containing Materials were assessed and given a Priority Rating of One, Two or Three, with Priority One being the items requiring the most immediate attention. As a result, Priority One items were identified within the facility in the forms of pipeline fitting compound, mud compound, fire-stop material and vinyl asbestos tile. Future planning should begin to address these asbestos containing materials as per the recommendations provided in the attached **Asbestos Survey Database found in Appendix II**. Priority Ratings for all other ACM identified is also found in the database on a room-by-room account.

5.0 ASBESTOS ABATEMENT DISCUSSION

Asbestos is a known carcinogen and is listed in the Province of Saskatchewan under the Occupational Health and Safety Appendix, Part V as a Hazardous Chemical Substance and any release of asbestos fibres into the atmosphere creates a potential health hazard. Although the mechanism and epidemiology of asbestos carcinogenesis is not yet well defined, accumulating evidence suggests the significance of exposure at even very low fibre concentrations and hence human exposure should be kept to a minimum. It should be noted however that asbestos is a natural mineral and a measurable background concentration can be detected in any location sampled (inside buildings, outside buildings, urban, rural, etc.). The recommendations of the report are therefore intended to keep the potential exposure to an absolute minimum with the knowledge that a zero exposure is not possible.

Asbestos containing materials have been used in a wide variety of applications. Of particular concern, is the group of so called friable products. A friable product is one that can be crumbled or reduced to powder or smaller fragments by hand pressure. Publications from the U.S.E.P.A. as early as 1977 have indicated the potential hazard of asbestos exposure in buildings containing these friable products. The two main uses of friable asbestos products are as spray insulation (thermal, acoustic or fireproofing) on deck and/or beams or as thermal insulation on piping or mechanical equipment. A large amount of non-friable asbestos-containing materials have also been used in building construction such as asbestos cement board and asbestos containing vinyl flooring.

The mere presence of a friable asbestos containing material does not imply that there is an actual presence of elevated airborne fibre. As numerous studies have indicated, elevated asbestos fibre levels are generally found when settled dust or the actual asbestos containing material itself is disturbed by maintenance, renovation, inadvertent contact or vibration. The factors considered in the Environmental Protection Agency (USEPA) exposure assessment (condition of material, water damage, activity, movement, exposed surface area, accessibility, friability and presence in an air stream) often give some indication of the likelihood of fibre release but are not in any way definitive in determining whether a hazard exists or not. That is, even if the most friable product exists in a building, elevated fibre levels will not likely occur unless there is some disturbance by physical contact, vibration or an air stream.

There are four possible approaches to control exposure to airborne asbestos once a friable material is identified in a building. These methods briefly are as follows:

- A) **Removal** - Asbestos material is removed and disposed of by burial and replaced by non-asbestos materials.
- B) **Encapsulation** - Asbestos material is coated with a bridging or penetrating sealant.
- C) **Enclosure** - Asbestos containing materials are separated from the building environment by barriers such as suspended ceilings or cladding materials.
- D) **Deferred Action or Management and Custodial Control** - The Province of Saskatchewan Human Resources, Labor and Employment Branch under the

Occupational health and Safety Regulations publish a document outlining “The Management of Asbestos”. In the guide for compliance, an action plan is outlined for management of the asbestos materials identified and in summary is:

1. Identification, which has been accomplished by this report.
2. Development of Written Handling Procedures for maintenance personnel or often arrangements are made for a qualified contractor to conduct the necessary removal or spot maintenance prior to the regular staff conducting maintenance.
3. Asbestos Abatement Awareness and Process Training if the regular maintenance personnel are required to conduct asbestos related activities.
4. Inspection on regular basis is conducted to determine the ongoing condition of the material. Sask. Occupational Health & Safety Regulations require an “annual” inspection of all “friable” asbestos materials by a competent person.

In the event renovations or maintenance is performed within areas containing asbestos materials, written procedures must be developed to conduct the activity or prior removal if the situation warrants.

6.0 REFERENCES

- .1 Province of Saskatchewan “The Occupational Health and Safety Act and The Occupational Health and Safety Regulations” Office Consolidation, January 1996.
- .2 Province of Saskatchewan Human Resources, Labor, and Employment “The Management of Asbestos” January, 1991.
- .3 USEPA, 1985. U.S. Environmental Protection Agency, "Guidance for Controlling Asbestos-Containing Materials in Buildings". Washington, DC: Office of Toxic Substances, USEPA.
- .4 Midwest Centre for Occupational Health & Safety St. Paul’s, Minnesota – Asbestos Training For Inspectors & Management Planners
- .5 McCrone Research Institute Course Hayward California " Asbestos Identification"
- .6 Environment Management and Protection Act, Saskatchewan Environment, October 2002
- .7 Hazardous Substances and waste Dangerous Goods Regulations, Saskatchewan Environment, April 1989

APPENDIX I

BULK SAMPLE ANALYSIS REPORT

BERSCH & ASSOCIATES LTD.

November 27, 2015

City of Saskatoon – Infrastructure Services – Facilities Branch
Mendel Art Gallery
950 Spadina Crescent East
Saskatoon, Sk.
S7K 3L6

ATTENTION: Brent Anderson

SUBJECT: Bulk Sample Analysis Report

Please find attached the laboratory results for the bulk analysis of the samples collected throughout the Mendel Art Gallery located at 950 Spadina Crescent East Saskatoon, SK. The samples were analyzed in our laboratory for the identification of asbestos.

The results for the bulk samples were obtained by examination in accordance with the current USEPA 600/R-93/116 Method for the analysis of asbestos in building materials using polarized light microscopy and dispersion staining techniques. The detection limit of this method is listed as less than 1% by volume.

This test report relates only to the materials sent for examination and any use or extension of the information by the client of these results is the responsibility of the client. If any questions arise on the results of the attached information please contact me at 306 222 7477. Thank you for this opportunity of service!

Sincerely,

Brad Berschiminsky
Bersch & Associates Ltd.
File: B67BLJ26

Bersch & Associates Ltd.

B67BAL07

Box 3568

Humboldt, Sask. S0K 2A0

BULK SAMPLE ANALYSIS REPORT**PROJECT NO. B67.15****CLIENT: City of Saskatoon****Mendel Art Gallery****Contact: Brent Anderson****Location: 950 Spadina Crescent East, Saskatoon, SK.**

NO.	DATE	SAMPLE INFORMATION	ASBESTOS	%	ANALYST
1	30-Apr-13	B01 - Lobby - Stipple Textured Ceiling Material	Chrysotile	15%	WB
2	12-May-15	Mech. Rm. B04 Auditorium Air Handling Unit - Access Hatch Mud/Insulation	Chrysotile	40%	WB
3	12-May-15	Mech. Rm. B04 Auditorium Air Handling Unit - Top Side Adjacent Wiring Mud/Insulation.(Plywood Is Covering)	Chrysotile	70%	WB
4	12-May-15	Mech. Rm. B04 - Mud/Insulation On Overhead Ducting Adjacent, Blue Boiler	Chrysotile	40%	WB
5	12-May-15	Mech. Rm. B04 - Mud/Insulation On Overhead Ducting Above Dials At Back Blue Boiler	Chrysotile	75%	WB
6	12-May-15	Mech. Rm. B04 - Mud/Insulation On Overhead Ducting At Rear Of Blue Boiler Adjacent Electrical Box	Chrysotile	60%	WB

Bersch & Associates Ltd.

B67BAL07

Box 3568

Humboldt, Sask. S0K 2A0

BULK SAMPLE ANALYSIS REPORT**PROJECT NO. B67.15****CLIENT: City of Saskatoon****Mendel Art Gallery****Contact: Brent Anderson****Location: 950 Spadina Crescent East, Saskatoon, SK.**

NO.	DATE	SAMPLE INFORMATION	ASBESTOS	%	ANALYST
7	26-Oct-15	Mech. Rm. B04 - Red Medium Pipefitting Compound At Back Of Auditorium AHU.	Chrysotile	70%	WB
8	26-Oct-15	Mech. Rm. B04 - Lineal Pipe Insulation At Back Of Auditorium AHU	No Asbestos Detected		WB
9	26-Oct-15	Mech. Rm. B04 - Small Pipefitting Compound On CHW Supply Behind Silver Gauge	Chrysotile	60%	WB
10	26-Oct-15	Mech. Rm. B04 - Felt Lining Inside AHU #1	No Asbestos Detected		WB
11	26-Oct-15	Mech. Rm. B04 - 1' x 1' Crème With Brown Streaks Floor Tile Behind AHU #1	Chrysotile	5%	WB
12	26-Oct-15	Mech. Rm. B04 - Loose Debris Inside Auditorium AHU - Front Access Hatch	No Asbestos Detected		WB

Bersch & Associates Ltd.

B67BAL07

Box 3568

Humboldt, Sask. S0K 2A0

BULK SAMPLE ANALYSIS REPORT**PROJECT NO. B67.15****CLIENT: City of Saskatoon****Mendel Art Gallery****Contact: Brent Anderson****Location: 950 Spadina Crescent East, Saskatoon, SK.**

NO.	DATE	SAMPLE INFORMATION	ASBESTOS	%	ANALYST
13	26-Oct-15	B09B Corridor - Heat Shield Material on Incandescent Light Fixture	Chrysotile	70%	WB
14	26-Oct-15	Mech. Rm. B04 - Debris On Floor Behind Auditorium AHU	Chrysotile	70%	WB
15	26-Oct-15	Mech. Rm. B04 - Lineal Pipe Insulation On Red Line Adjacent Exit Door N.E. Corner	No Asbestos Detected		WB
16	26-Oct-15	Mech. Rm. B04 - Tar Behind Canvas North Side Of Auditorium AHU	No Asbestos Detected		WB
17	26-Oct-15	Mech. Rm. B04 - Mud Behind Canvas North Side Of Auditorium AHU	Chrysotile	60%	WB
18	26-Oct-15	Mech. Rm. B14 - Parging On North Wall Around Inlet for Supply Fan	No Asbestos Detected		WB

Bersch & Associates Ltd.

B67BAL07

Box 3568

Humboldt, Sask. S0K 2A0

BULK SAMPLE ANALYSIS REPORT**PROJECT NO. B67.15****CLIENT: City of Saskatoon****Mendel Art Gallery****Contact: Brent Anderson****Location: 950 Spadina Crescent East, Saskatoon, SK.**

NO.	DATE	SAMPLE INFORMATION	ASBESTOS	%	ANALYST
19	26-Oct-15	Mech. Rm. B04 - Small Pipefitting Compound On Red Line Adjacent Front Access Hatch Auditorium AHU	Chrysotile	70%	WB
20	26-Oct-15	Mech. Rm. B04 - Expansion Gasket Material South Side Auditorium AHU	No Asbestos Detected		WB
21	26-Oct-15	Mech. Rm. B04 - Small Pipefitting Compound Above 3 Metal Access Hatches South Side Auditorium AHU	No Asbestos Detected		WB
22	26-Oct-15	Mech. Rm. B04 - Lineal Pipe Insulation Along Back East Wall Adjacent Blue Filter	No Asbestos Detected		WB
23	26-Oct-15	Mech. Rm. B04 - Lineal Pipe Insulation Adjacent HP2	No Asbestos Detected		WB
24	26-Oct-15	Mech. Rm. B04 - Lineal Pipe Insulation On HWR Line	No Asbestos Detected		WB

Bersch & Associates Ltd.

B67BAL07

Box 3568

Humboldt, Sask. S0K 2A0

BULK SAMPLE ANALYSIS REPORT**PROJECT NO. B67.15****CLIENT: City of Saskatoon****Mendel Art Gallery****Contact: Brent Anderson****Location: 950 Spadina Crescent East, Saskatoon, SK.**

NO.	DATE	SAMPLE INFORMATION	ASBESTOS	%	ANALYST
25	26-Oct-15	Mech. Rm. B04 - Lineal Pipe Insulation On HWS Line	No Asbestos Detected		WB
26	26-Oct-15	Mech. Rm. B04 - Boiler Breeching Front Of Boiler #1	Chrysotile	70%	WB
27	26-Oct-15	Mech. Rm. B04 - Lineal Pipe Insulation Adjacent "Panel H"	No Asbestos Detected		WB
28	26-Oct-15	Mech. Rm. B04 - Mud Compound On Medium Flange Above Middle Of Boiler #1	Chrysotile	70%	WB
29	26-Oct-15	Mech. Rm. B04 - Mud Compound On Hanger Above Middle Of Boiler #1	Chrysotile	40%	WB
30	26-Oct-15	Mech. Rm. B04 - Tar Behind Canvas On Large Duct Overhead "Mag Chiller" Panel	No Asbestos Detected		WB

Bersch & Associates Ltd.

B67BAL07

Box 3568

Humboldt, Sask. S0K 2A0

BULK SAMPLE ANALYSIS REPORT**PROJECT NO. B67.15****CLIENT: City of Saskatoon****Mendel Art Gallery****Contact: Brent Anderson****Location: 950 Spadina Crescent East, Saskatoon, SK.**

NO.	DATE	SAMPLE INFORMATION	ASBESTOS	%	ANALYST
31	26-Oct-15	Mech. Rm. B04 - Mud Behind Canvas Bottom Of AHU #1 Adjacent Green Panel	Chrysotile	50%	WB
32	26-Oct-15	Mech. Rm. B04 - Medium Pipe Fitting Compound Behind AHU #1 West Wall	Chrysotile	75%	WB
33	26-Oct-15	Mech. Rm. B04 - Medium Pipe Fitting Compound On Red Line Overhead Adjacent "Mag Chiller" Panel	Chrysotile	60%	WB
34	26-Oct-15	Electrical B28 - Fire-stop Material Upper South Wall	No Asbestos Detected		WB
35	26-Oct-15	Projector Room B02 - 9" x 9" Crème With Brown Streak Floor Tile	Chrysotile	7%	WB
36	26-Oct-15	Projector Room B02 - Cork Material On Walls	No Asbestos Detected		WB

Bersch & Associates Ltd.

B67BAL07

Box 3568

Humboldt, Sask. S0K 2A0

BULK SAMPLE ANALYSIS REPORT**PROJECT NO. B67.15****CLIENT: City of Saskatoon****Mendel Art Gallery****Contact: Brent Anderson****Location: 950 Spadina Crescent East, Saskatoon, SK.**

NO.	DATE	SAMPLE INFORMATION	ASBESTOS	%	ANALYST
37	26-Oct-15	112 Gallery #3 - Textured Drywall Mud Compound Adjacent IT Storage Room 115	Chrysotile	2%	WB
38	9-Nov-15	B02 Projector Room - Debris Inside Of Ducting At Access Hatch	No Asbestos Detected		WB
39	9-Nov-15	115 IT Storage Room Small Storage - Concrete/Plaster Flooring With Burlap	No Asbestos Detected		WB
40	9-Nov-15	115 IT Storage Room - 1' x 1' Floor Tile Light/Dark Gray Steak	Chrysotile	2%	WB
41	9-Nov-15	203 Clerk Office - 2' x 2' Grey Ceiling Tile	No Asbestos Detected		WB
42	9-Nov-15	203 Clerk Office -Plaster Skim On Bottom Side Of Ceiling Tile	No Asbestos Detected		WB

Bersch & Associates Ltd.

B67BAL07

Box 3568

Humboldt, Sask. S0K 2A0

BULK SAMPLE ANALYSIS REPORT**PROJECT NO. B67.15****CLIENT: City of Saskatoon****Mendel Art Gallery****Contact: Brent Anderson****Location: 950 Spadina Crescent East, Saskatoon, SK.**

NO.	DATE	SAMPLE INFORMATION	ASBESTOS	%	ANALYST
43	9-Nov-15	204 Washroom - Sheet Flooring	No Asbestos Detected		WB
44	9-Nov-15	205 Business Manager Office - 2' x 2' Fissure & Pinhole Ceiling Tile	No Asbestos Detected		WB
45	9-Nov-15	205 Business Manager Office - Tar/Debris In South East Corner Above Access Hatch Above Suspended Ceiling	No Asbestos Detected		WB
46	9-Nov-15	205 Business Manager Office - Wall/Ceiling Plaster	No Asbestos Detected		WB
47	9-Nov-15	205 Business Manager Office - Drywall Mud Compound Above Suspended Ceiling	Chrysotile	3%	WB
48	9-Nov-15	112 Gallery 3 - Drywall Mud Compound North Wall Adjacent Exit	No Asbestos Detected		WB

Bersch & Associates Ltd.

B67BAL07

Box 3568

Humboldt, Sask. S0K 2A0

BULK SAMPLE ANALYSIS REPORT**PROJECT NO. B67.15****CLIENT: City of Saskatoon****Mendel Art Gallery****Contact: Brent Anderson****Location: 950 Spadina Crescent East, Saskatoon, SK.**

NO.	DATE	SAMPLE INFORMATION	ASBESTOS	%	ANALYST
49	9-Nov-15	114 Gallery 2B South Wall West Face - Plaster In Access Hatch	No Asbestos Detected		WB
50	9-Nov-15	114 Gallery 2B South Wall West Face - Drywall Mud Compound	No Asbestos Detected		WB
51	9-Nov-15	B14 Boiler Room #2 - Plaster With Skim Coat Adjacent Breaker Box	No Asbestos Detected		WB
52	9-Nov-15	B14 Boiler Room #2 - Mud Compound At Flange On Top Of Boiler	No Asbestos Detected		WB
53	9-Nov-15	B14 Boiler Room #2 - Mud/Plaster On Window Seam North East Corner Behind AHU	No Asbestos Detected		WB
54	9-Nov-15	B14 Boiler Room #2 - Debris On Floor North East Corner Behind AHU	No Asbestos Detected		WB

Bersch & Associates Ltd.

B67BAL07

Box 3568

Humboldt, Sask. S0K 2A0

BULK SAMPLE ANALYSIS REPORT**PROJECT NO. B67.15****CLIENT: City of Saskatoon****Mendel Art Gallery****Contact: Brent Anderson****Location: 950 Spadina Crescent East, Saskatoon, SK.**

NO.	DATE	SAMPLE INFORMATION	ASBESTOS	%	ANALYST
55a	9-Nov-15	B14 Boiler Room #2 - Plaster Skim Coat In North Wall Cavity	No Asbestos Detected		WB
55b	9-Nov-15	B14 Boiler Room #2 - Plaster Base Coat 1 In North Wall Cavity	No Asbestos Detected		WB
55c	9-Nov-15	B14 Boiler Room #2 - Plaster Base Coat 2 In North Wall Cavity	No Asbestos Detected		WB
56	9-Nov-15	B14 Boiler Room #2 - Insulation In Ducting North East Corner Of AHU	No Asbestos Detected		WB
57	9-Nov-15	B13 Lunch Room - Ducting Adhesive Adjacent Exit Door Above Access Hatch	No Asbestos Detected		WB
58	9-Nov-15	B10 Workshop - Small Pipefitting Compound Above Lowered Access Hatch	No Asbestos Detected		WB

Bersch & Associates Ltd.

B67BAL07

Box 3568

Humboldt, Sask. S0K 2A0

BULK SAMPLE ANALYSIS REPORT**PROJECT NO. B67.15****CLIENT: City of Saskatoon****Mendel Art Gallery****Contact: Brent Anderson****Location: 950 Spadina Crescent East, Saskatoon, SK.**

NO.	DATE	SAMPLE INFORMATION	ASBESTOS	%	ANALYST
59	9-Nov-15	B14 Boiler Room #2 - Tar Behind Lineal Pipe Insulation Above Black Valve	No Asbestos Detected		WB
60	9-Nov-15	B14 Boiler Room #2 - Small Pipefitting Compound At "T-Joint" Adjacent Red & White Valve	No Asbestos Detected		WB
61	9-Nov-15	B14 Boiler Room #2 - Medium Pipefitting Compound On Red & White Steam Line Overhead	No Asbestos Detected		WB
62	9-Nov-15	B14 Boiler Room #2 - Mud Compound Medium End Cap Top Front Of Boiler	No Asbestos Detected		WB
63	9-Nov-15	B14 Boiler Room #2 - Small Pipefitting Compound Adjacent Flange On Front Top Boiler	No Asbestos Detected		WB
64	9-Nov-15	B14 Boiler Room #2 - Small Pipefitting Compound Adjacent Red & White Steam Line	No Asbestos Detected		WB

Bersch & Associates Ltd.

B67BAL07

Box 3568

Humboldt, Sask. S0K 2A0

BULK SAMPLE ANALYSIS REPORT**PROJECT NO. B67.15****CLIENT: City of Saskatoon****Mendel Art Gallery****Contact: Brent Anderson****Location: 950 Spadina Crescent East, Saskatoon, SK.**

NO.	DATE	SAMPLE INFORMATION	ASBESTOS	%	ANALYST
65a	9-Nov-15	120 Kitchen - Plaster Skim Coat South Wall Behind Dishwasher & Sink	No Asbestos Detected		WB
65b	9-Nov-15	120 Kitchen - Plaster Base Coat South Wall Behind Dishwasher & Sink	No Asbestos Detected		WB
66	9-Nov-15	B27 Women's Washroom - Plaster/Vermiculite Debris Above Access Hatch Over Sink	No Asbestos Detected		WB
67	9-Nov-15	B26 Vestibule - Small Pipefitting Compound Above Drywall Ceiling	Chrysotile	40%	WB
68	9-Nov-15	B21 Conservatory Workshop - Plaster & Skim Coat North Wall	No Asbestos Detected		WB
69	9-Nov-15	B21 Conservatory Workshop - Concrete & Skim Coat South Wall	No Asbestos Detected		WB

Bersch & Associates Ltd.

B67BAL07

Box 3568

Humboldt, Sask. S0K 2A0

BULK SAMPLE ANALYSIS REPORT**PROJECT NO. B67.15****CLIENT: City of Saskatoon****Mendel Art Gallery****Contact: Brent Anderson****Location: 950 Spadina Crescent East, Saskatoon, SK.**

NO.	DATE	SAMPLE INFORMATION	ASBESTOS	%	ANALYST
70	9-Nov-15	128 Conservatory - Transite Board	Chrysotile	30%	WB
71	9-Nov-15	128 Conservatory - Mortar on Rock Water Fountain	No Asbestos Detected		WB
72	9-Nov-15	Exit Courtyard - Brick Mortar East Wall	No Asbestos Detected		WB
73	9-Nov-15	B14 Mech. Rm. 2 - Cinder Block on West Wall Adjacent Chem Mixer	No Asbestos Detected		WB
74	9-Nov-15	B13 Lunch Room - Sheet Flooring	No Asbestos Detected		WB
75	9-Nov-15	B10 Workshop - Drywall Mud Compound On The Ceiling Adjacent Pillar & Fire Detector Adj. The Overhead Door.	Chrysotile	3%	WB

Bersch & Associates Ltd.

B67BAL07

Box 3568

Humboldt, Sask. S0K 2A0

BULK SAMPLE ANALYSIS REPORT**PROJECT NO. B67.15****CLIENT: City of Saskatoon****Mendel Art Gallery****Contact: Brent Anderson****Location: 950 Spadina Crescent East, Saskatoon, SK.**

NO.	DATE	SAMPLE INFORMATION	ASBESTOS	%	ANALYST
76	9-Nov-15	B10 - Fibrous Material Southwest Corner Adjacent Fire Extinguisher	No Asbestos Detected		WB
77	9-Nov-15	B05 Framing Shop - 2' x 4' Ceiling Tile 2 Pinhole Pattern	No Asbestos Detected		WB
78	9-Nov-15	B06 Workshop - Small Pipeline Fitting Compound Northwest Corner	Chrysotile	70%	WB
79	9-Nov-15	B06 Workshop - Fire-Stop Material At Pipe Penetration On North Wall	Chrysotile	40%	WB
80	20-Nov-15	B26 Vestibule - Drywall Mud Compound	No Asbestos Detected		WB
81	20-Nov-15	B26 Vestibule - Plaster Base Coat	No Asbestos Detected		WB

Bersch & Associates Ltd.

B67BAL07

Box 3568

Humboldt, Sask. S0K 2A0

BULK SAMPLE ANALYSIS REPORT**PROJECT NO. B67.15****CLIENT: City of Saskatoon****Mendel Art Gallery****Contact: Brent Anderson****Location: 950 Spadina Crescent East, Saskatoon, SK.**

NO.	DATE	SAMPLE INFORMATION	ASBESTOS	%	ANALYST
82	20-Nov-15	B15c Office Space - Medium Pipeline Fitting Compound Above Suspended Ceiling Adjacent Door & Cabinet	Chrysotile	70%	WB
83	20-Nov-15	B15c Office Space - Debris On Top Of Ducting Above Suspended Ceiling	No Asbestos Detected		WB
84	20-Nov-15	B19b Office Space - Drywall Mud Compound	No Asbestos Detected		WB
85	20-Nov-15	B18e Office Space - Sheet Flooring Adjacent Entry	No Asbestos Detected		WB
86a	20-Nov-15	B18e Office Space - Plaster Skim Coat	No Asbestos Detected		WB
86b	20-Nov-15	B18e Office Space - Plaster Base Coat	Chrysotile	2%	WB

Bersch & Associates Ltd.

B67BAL07

Box 3568

Humboldt, Sask. S0K 2A0

BULK SAMPLE ANALYSIS REPORT**PROJECT NO. B67.15****CLIENT: City of Saskatoon****Mendel Art Gallery****Contact: Brent Anderson****Location: 950 Spadina Crescent East, Saskatoon, SK.**

NO.	DATE	SAMPLE INFORMATION	ASBESTOS	%	ANALYST
87	20-Nov-15	B11 Storage Vault - Mud Compound On Hanger Above Entry	No Asbestos Detected		WB
88	20-Nov-15	B09 Lunch Room - Sheet Flooring	No Asbestos Detected		WB
89	20-Nov-15	117 Mendel Salon - Drywall Mud Compound on Upper West Wall	No Asbestos Detected		WB
90	20-Nov-15	200 Director Office - Drywall Mud Compound	No Asbestos Detected		WB
91	23-Nov-15	122 Tea Salon - Drywall Mud Compound Upper South Wall Above Windows	No Asbestos Detected		WB
92	24-Nov-15	122 Tea Salon - Cement on Southwest Pillar Adjacent Entry	No Asbestos Detected		WB

Bersch & Associates Ltd.

B67BAL07

Box 3568

Humboldt, Sask. S0K 2A0

BULK SAMPLE ANALYSIS REPORT**PROJECT NO. B67.15****CLIENT: City of Saskatoon****Mendel Art Gallery****Contact: Brent Anderson****Location: 950 Spadina Crescent East, Saskatoon, SK.**

NO.	DATE	SAMPLE INFORMATION	ASBESTOS	%	ANALYST
93	24-Nov-15	124 Washroom - Plaster Above Ceiling Access Hatch	No Asbestos Detected		WB
94	24-Nov-15	B14 Boiler Room 2 - Rope Gasket Material Northwest Corner of Room around Inlet for Supply Fan.	Chrysotile	70%	WB
95	1-Dec-15	B29 Transformer Vault - Spray-Applied Fireproofing On The Ceiling.	Amosite	60%	WB
96	1-Dec-15	Rooftop - Insulation Within The Boiler Breeching Stack Between The Inner And Outer Cladding.	No Asbestos Detected		WB

APPENDIX II

ASBESTOS SURVEY DATABASE

City of Saskatoon - Mendel Art Gallery															
			SAMPLE DATA												
Floor	Room Number	Use	SAMPLE SAMPLE REP	Sample ID	Date DD/MM/YY	Asbestos Type	% of Asbestos	Tradenname ACM Product	Condition	Priority	Description of Sample Location	Asbestos Content In Area	Potential for Disturbance	Recommended Action	Comments
B	B01	Lobby	Sample	B67-ASB.1	30-Apr-13	Chrysotile	15%	Stipple Ceiling Texture	Good	3	B01 - Lobby - Stipple Textured Ceiling Material	Stipple Textured Ceiling Material	Low	Manage	No access to ceiling space.
B	B02	Projector Room	Sample	B67-ASB.35	26-Oct-15	Chrysotile	7%	Vinyl Asbestos Tile	Good	3	Projector Room B02 - 9" x 9" Crème With Brown Streak Floor Tile	Vinyl Asbestos Tile, Heat Shield Material	Low	Manage	
B	B02	Projector Room	Sample	B67-ASB.36	26-Oct-15	No Asbestos Detected					Projector Room B02 - Cork Material On Walls	Vinyl Asbestos Tile, Heat Shield Material			
B	B02	Projector Room	Sample	B67-ASB.38	09-Nov-15	No Asbestos Detected					B02 Projector Room - Debris Inside Of Ducting At Access Hatch	Vinyl Asbestos Tile, Heat Shield Material			
B	B02	Projector Room	Sample Rep.	B67-ASB.13	26-Oct-15	Chrysotile	70%	Heat Shield Material	Moderate	2	B09B Corridor - Heat Shield Material In The Incandescent Light Fixture	Vinyl Asbestos Tile, Heat Shield Material	Moderate	Remove	The heat shield inside the light fixture globe is slightly damaged. We recommend updating the fixture with a new one and disposing of the heat shield material as waste asbestos.
B	B03	Auditorium	Sample Rep.	B67-ASB.1	30-Apr-13	Chrysotile	15%	Stipple Ceiling Texture	Good	3	B01 - Lobby - Stipple Textured Ceiling Material	Stipple Textured Ceiling Material, Vinyl Asbestos Tile	Low	Manage	
B	B03	Auditorium	Sample Rep.	B67-ASB.35	26-Oct-15	Chrysotile	7%	Vinyl Asbestos Tile	Good	3	Projector Room B02 - 9" x 9" Crème With Brown Streak Floor Tile	Stipple Textured Ceiling Material, Vinyl Asbestos Tile	Low	Manage	
B	B03b	Library Room	Sample Rep.	B67-ASB.1	30-Apr-13	Chrysotile	15%	Stipple Ceiling Texture	Good	3	B01 - Lobby - Stipple Textured Ceiling Material	Stipple Textured Ceiling Material, Vinyl Asbestos Tile	Low	Manage	
B	B03b	Library Room	Sample Rep.	B67-ASB.35	26-Oct-15	Chrysotile	7%	Vinyl Asbestos Tile	Good	3	Projector Room B02 - 9" x 9" Crème With Brown Streak Floor Tile	Stipple Textured Ceiling Material, Vinyl Asbestos Tile	Low	Manage	
B	B04	Mechanical Room #1	Sample	B67-ASB.2	12-May-15	Chrysotile	40%	Mud Compound	Mod/Good	3	Mech. Rm. B04 Auditorium Air Handling Unit - Access Hatch Mud/Insulation	Pipeline Fitting Compound, Mud Compound, Vinyl Asbestos Tile	Low	Manage	
B	B04	Mechanical Room #1	Sample	B67-ASB.3	12-May-15	Chrysotile	70%	Mud Compound	Good	3	Mech. Rm. B04 Auditorium Air Handling Unit - Top Side Adjacent Wiring Mud/Insulation.(Plywood Is Covering)	Pipeline Fitting Compound, Mud Compound, Vinyl Asbestos Tile	Low	Manage	
B	B04	Mechanical Room #1	Sample	B67-ASB.4	12-May-15	Chrysotile	40%	Mud Compound	Good	3	Mech. Rm. B04 - Mud/Insulation On Overhead Ducting Adjacent, Blue Boiler	Pipeline Fitting Compound, Mud Compound, Vinyl Asbestos Tile	Low	Manage	
B	B04	Mechanical Room #1	Sample	B67-ASB.5	12-May-15	Chrysotile	75%	Mud Compound	Mod/Good	3	Mech. Rm. B04 - Mud/Insulation On Overhead Ducting Above Dials At Back Blue Boiler	Pipeline Fitting Compound, Mud Compound, Vinyl Asbestos Tile	Low	Manage	
B	B04	Mechanical Room #1	Sample	B67-ASB.6	12-May-15	Chrysotile	60%	Mud Compound	Good	3	Mech. Rm. B04 - Mud/Insulation On Overhead Ducting At Rear Of Blue Boiler Adjacent Electrical Box	Pipeline Fitting Compound, Mud Compound, Vinyl Asbestos Tile	Low	Manage	
B	B04	Mechanical Room #1	Sample	B67-ASB.7	26-Oct-15	Chrysotile	70%	Pipeline Fitting Compound	Good	3	Mech. Rm. B04 - Medium Pipefitting Compound At Back Of Auditorium AHU.	Pipeline Fitting Compound, Mud Compound, Vinyl Asbestos Tile	Low	Manage	

City of Saskatoon - Mendel Art Gallery															
			SAMPLE DATA												
Floor	Room Number	Use	SAMPLE	Sample	Date	Asbestos	% of	Tradenname			Description of	Asbestos Content	Potential for	Recommended	
			SAMPLE REP	ID	DD/MM/YY	Type	Asbestos	ACM Product	Condition	Priority	Sample Location	In Area	Disturbance	Action	Comments
B	B04	Mechanical Room #1	Sample	B67-ASB.8	26-Oct-15	No Asbestos Detected					Mech. Rm. B04 - Lineal Pipe Insulation At Back Of Auditorium AHU	Pipeline Fitting Compound, Mud Compound, Vinyl Asbestos Tile			
B	B04	Mechanical Room #1	Sample	B67-ASB.9	26-Oct-15	Chrysotile	60%	Pipeline Fitting Compound	Poor/Mod	1	Mech. Rm. B04 - Small Pipefitting Compound On CHW Supply Behind Silver Gauge	Pipeline Fitting Compound, Mud Compound, Vinyl Asbestos Tile	Mod/High	Repair/Remove	
B	B04	Mechanical Room #1	Sample	B67-ASB.10	26-Oct-15	No Asbestos Detected					Mech. Rm. B04 - Felt Lining Inside AHU #1	Pipeline Fitting Compound, Mud Compound, Vinyl Asbestos Tile			
B	B04	Mechanical Room #1	Sample	B67-ASB.11	26-Oct-15	Chrysotile	5%	Vinyl Asbestos Tile	Good	1	Mech. Rm. B04 - 1' x 1' Crème With Brown Streaks Floor Tile Behind AHU #1	Pipeline Fitting Compound, Mud Compound, Vinyl Asbestos Tile	Low	Remove	Remove the stack of Vinyl Asbestos Floor Tile, along the west wall behind AHU #1 and dispose of as waste asbestos.
B	B04	Mechanical Room #1	Sample	B67-ASB.12	26-Oct-15	No Asbestos Detected					Mech. Rm. B04 - Loose Debris Inside Auditorium AHU - Front Access Hatch	Pipeline Fitting Compound, Mud Compound, Vinyl Asbestos Tile			
B	B04	Mechanical Room #1	Sample	B67-ASB.14	26-Oct-15	Chrysotile	70%	Debris			Mech. Rm. B04 - Debris On Floor Behind Auditorium AHU	Pipeline Fitting Compound, Mud Compound, Vinyl Asbestos Tile			Debris has been cleaned up.
B	B04	Mechanical Room #1	Sample	B67-ASB.15	26-Oct-15	No Asbestos Detected					Mech. Rm. B04 - Lineal Pipe Insulation On Red Line Adjacent Exit Door N.E. Corner	Pipeline Fitting Compound, Mud Compound, Vinyl Asbestos Tile			
B	B04	Mechanical Room #1	Sample	B67-ASB.16	26-Oct-15	No Asbestos Detected					Mech. Rm. B04 - Tar Behind Canvas North Side Of Auditorium AHU	Pipeline Fitting Compound, Mud Compound, Vinyl Asbestos Tile			
B	B04	Mechanical Room #1	Sample	B67-ASB.17	26-Oct-15	Chrysotile	60%	Mud Compound	Mod/Good	3	Mech. Rm. B04 - Mud Behind Canvas North Side Of Auditorium AHU	Pipeline Fitting Compound, Mud Compound, Vinyl Asbestos Tile	Low	Manage	
B	B04	Mechanical Room #1	Sample	B67-ASB.18	26-Oct-15	No Asbestos Detected					Mech. Rm. B14 - Parging On North Wall Around Inlet for Supply Fan	Pipeline Fitting Compound, Mud Compound, Vinyl Asbestos Tile			
B	B04	Mechanical Room #1	Sample	B67-ASB.19	26-Oct-15	Chrysotile	70%	Pipeline Fitting Compound	Mod/Good	3	Mech. Rm. B04 - Small Pipefitting Compound On Red Line Adjacent Front Access Hatch Auditorium AHU	Pipeline Fitting Compound, Mud Compound, Vinyl Asbestos Tile	Low	Manage	
B	B04	Mechanical Room #1	Sample	B67-ASB.20	26-Oct-15	No Asbestos Detected					Mech. Rm. B04 - Expansion Gasket Material South Side Auditorium AHU	Pipeline Fitting Compound, Mud Compound, Vinyl Asbestos Tile			
B	B04	Mechanical Room #1	Sample	B67-ASB.21	26-Oct-15	No Asbestos Detected					Mech. Rm. B04 - Small Pipefitting Compound Above 3 Metal Access Hatches South Side Auditorium AHU	Pipeline Fitting Compound, Mud Compound, Vinyl Asbestos Tile			

City of Saskatoon - Mendel Art Gallery															
			SAMPLE DATA												
Floor	Room Number	Use	SAMPLE	Sample	Date	Asbestos	% of	Tradename			Description of	Asbestos Content	Potential for	Recommended	
			SAMPLE REP	ID	DD/MM/YY	Type	Asbestos	ACM Product	Condition	Priority	Sample Location	In Area	Disturbance	Action	Comments
B	B04	Mechanical Room #1	Sample	B67-ASB.22	26-Oct-15	No Asbestos Detected					Mech. Rm. B04 - Lineal Pipe Insulation Along Back East Wall Adjacent Blue Filter	Pipeline Fitting Compound, Mud Compound, Vinyl Asbestos Tile			
B	B04	Mechanical Room #1	Sample	B67-ASB.23	26-Oct-15	No Asbestos Detected					Mech. Rm. B04 - Lineal Pipe Insulation Adjacent HP2	Pipeline Fitting Compound, Mud Compound, Vinyl Asbestos Tile			
B	B04	Mechanical Room #1	Sample	B67-ASB.24	26-Oct-15	No Asbestos Detected					Mech. Rm. B04 - Lineal Pipe Insulation On HWR Line	Pipeline Fitting Compound, Mud Compound, Vinyl Asbestos Tile			
B	B04	Mechanical Room #1	Sample	B67-ASB.25	26-Oct-15	No Asbestos Detected					Mech. Rm. B04 - Lineal Pipe Insulation On HWS Line	Pipeline Fitting Compound, Mud Compound, Vinyl Asbestos Tile			
B	B04	Mechanical Room #1	Sample	B67-ASB.26	26-Oct-15	Chrysotile	70%	Lineal Pipeline Insulation	Mod/Good	3	Mech. Rm. B04 - Boiler #1 Breeching At 45 Degree Fitting Above Chiller.	Pipeline Fitting Compound, Mud Compound, Vinyl Asbestos Tile	Low	Manage	
B	B04	Mechanical Room #1	Sample Rep.	B67-ASB.28	26-Oct-15	Chrysotile	70%	Mud Compound	Poor	1	Mech. Rm. B04 - Mud Compound On Medium Flange Above Middle Of Boiler #1	Pipeline Fitting Compound, Mud Compound, Vinyl Asbestos Tile	Moderate	Repair/Remove	Repair/Remove the insulation at the front of heat exchanger where the insulation was removed. Repair/Remove the east end cap of the heat exchanger.
B	B04	Mechanical Room #1	Sample	B67-ASB.27	26-Oct-15	No Asbestos Detected					Mech. Rm. B04 - Lineal Pipe Insulation Adjacent "Panel H"	Pipeline Fitting Compound, Mud Compound, Vinyl Asbestos Tile			
B	B04	Mechanical Room #1	Sample	B67-ASB.28	26-Oct-15	Chrysotile	70%	Mud Compound	Mod/Good	3	Mech. Rm. B04 - Mud Compound On Medium Flange Above Middle Of Boiler #1	Pipeline Fitting Compound, Mud Compound, Vinyl Asbestos Tile	Low	Manage	
B	B04	Mechanical Room #1	Sample	B67-ASB.29	26-Oct-15	Chrysotile	40%	Mud Compound	Mod/Good	3	Mech. Rm. B04 - Mud Compound On Hanger Above Middle Of Boiler #1	Pipeline Fitting Compound, Mud Compound, Vinyl Asbestos Tile	Low	Manage	
B	B04	Mechanical Room #1	Sample	B67-ASB.30	26-Oct-15	No Asbestos Detected					Mech. Rm. B04 - Tar Behind Canvas On Large Duct Overhead "Mag Chiller" Panel	Pipeline Fitting Compound, Mud Compound, Vinyl Asbestos Tile			
B	B04	Mechanical Room #1	Sample	B67-ASB.31	26-Oct-15	Chrysotile	50%	Mud Compound	Moderate	3	Mech. Rm. B04 - Mud Behind Canvas Bottom Of AHU #1 Adjacent Green Panel	Pipeline Fitting Compound, Mud Compound, Vinyl Asbestos Tile	Low	Manage	
B	B04	Mechanical Room #1	Sample	B67-ASB.32	26-Oct-15	Chrysotile	75%	Pipeline Fitting Compound	Mod/Good	3	Mech. Rm. B04 - Medium Pipe Fitting Compound Behind AHU #1 West Wall	Pipeline Fitting Compound, Mud Compound, Vinyl Asbestos Tile	Low	Manage	
B	B04	Mechanical Room #1	Sample	B67-ASB.33	26-Oct-15	Chrysotile	60%	Pipeline Fitting Compound	Mod/Good	3	Mech. Rm. B04 - Medium Pipe Fitting Compound On Red Line Overhead Adjacent "Mag Chiller" Panel	Pipeline Fitting Compound, Mud Compound, Vinyl Asbestos Tile	Low	Manage	

City of Saskatoon - Mendel Art Gallery															
SAMPLE DATA															
Floor	Room Number	Use	SAMPLE SAMPLE REP	Sample ID	Date DD/MM/YY	Asbestos Type	% of Asbestos	Tradename ACM Product	Condition	Priority	Description of Sample Location	Asbestos Content In Area	Potential for Disturbance	Recommended Action	Comments
B	B04	Mechanical Room #1	Sample Rep.	B67-ASB.33	26-Oct-15	Chrysotile	60%	Pipeline Fitting Compound	Poor	1	Mech. Rm. B04 - Medium Pipe Fitting Compound On Red Line Overhead Adjacent "Mag Chiller" Panel	Pipeline Fitting Compound, Mud Compound, Vinyl Asbestos Tile	Low/Mod	Remove	Remove the residual mud compound on the overhead pipeline fitting adjacent to the Northwest corner of the boiler.
B	B05	Framing Shop	Sample	B67-ASB.77	09-Nov-15	No Asbestos Detected					B05 Framing Shop - 2' x 4' Ceiling Tile 2 Pinhole Pattern	Pipeline Fitting Compound			
B	B05	Framing Shop	Sample Rep.	B67-ASB.19	26-Oct-15	Chrysotile	70%	Pipeline Fitting Compound	Good	3	Mech. Rm. B04 - Small Pipefitting Compound On Red Line Adjacent Front Access Hatch Auditorium AHU	Pipeline Fitting Compound	Low	Manage	Fittings above suspended ceiling at South Wall, and two fittings located on the rad heater.
B	B06	Work Shop	Sample	B67-ASB.78	09-Nov-15	Chrysotile	70%	Pipeline Fitting Compound	Poor	1	B06 Workshop - Small Pipeline Fitting Compound Northwest Corner	Pipeline Fitting Compound, Fire-Stop Material	Moderate	Repair/Remove	There are 2 fittings on overhead auxiliary line upper west wall that require repair or removal.
B	B06	Work Shop	Sample	B67-ASB.79	09-Nov-15	Chrysotile	40%	Fire-Stop Material	Poor	1	B06 Workshop - Fire-Stop Material At Pipe Penetration On North Wall	Pipeline Fitting Compound, Fire-Stop Material	Moderate	Repair/Remove	Located overhead along centre of the North wall. The material is actually the same material as the pipeline fitting. The material is slightly damaged at the pipeline penetration in the wall.
B	B07	Elevator Room	Sample Rep.	B67-ASB.5	12-May-15	Chrysotile	75%	Mud Compound	Good	3	Mech. Rm. B04 - Mud/Insulation On Overhead Ducting Above Dials At Back Blue Boiler	Mud Compound	Low	Manage	
B	B09	Lunch Room	Sample	B67-ASB.88	20-Nov-15	No Asbestos Detected					B09 Lunch Room - Sheet Flooring	Heat Shield Material			
B	B09	Lunch Room	Sample Rep.	B67-ASB.13	26-Oct-15	Chrysotile	70%	Heat Shield Material	Good	2	B09B Corridor - Heat Shield Material In The Incandescent Light Fixture	Heat Shield Material	Low	Remove	We recommended replacing all 3 light fixtures in future and disposing of the heat shield material as waste asbestos.
B	B09b	Corridor	Sample	B67-ASB.13	26-Oct-15	Chrysotile	70%	Heat Shield Material	Good	2	B09B Corridor - Heat Shield Material In The Incandescent Light Fixture	Heat Shield Material, Pipeline Fitting Compound	Low	Remove	We recommended replacing the light fixture in future and disposing of the heat shield material as waste asbestos.
B	B09b	Corridor	Sample Rep.	B67-ASB.32	26-Oct-15	Chrysotile	75%	Pipeline Fitting Compound	Good	3	Mech. Rm. B04 - Medium Pipe Fitting Compound Behind AHU #1 West Wall	Heat Shield Material, Pipeline Fitting Compound	Low	Manage	
B	B10	Work Shop	Sample	B67-ASB.58	09-Nov-15	No Asbestos Detected					B10 Workshop - Small Pipefitting Compound Above Lowered Access Hatch	Drywall Mud Compound			
B	B10	Work Shop	Sample	B67-ASB.75	09-Nov-15	Chrysotile	3%	Drywall Mud Compound	Good	3	B10 Workshop - Drywall Mud Compound On The Ceiling Adjacent Pillar & Fire Detector Adjacent The Overhead Door.	Drywall Mud Compound	Low	Manage	
B	B10	Work Shop	Sample	B67-ASB.76	09-Nov-15	No Asbestos Detected					B10 - Fibrous Material Southwest Corner Adjacent Fire Extinguisher	Drywall Mud Compound			
B	B11	Storage Vault	Sample	B67-ASB.87	20-Nov-15	No Asbestos Detected					B11 Storage Vault - Mud Compound On Hanger Above Entry	No Accessible ACM			
B	B12	Shipping & Receiving										No Accessible ACM			

City of Saskatoon - Mendel Art Gallery															
			SAMPLE DATA												
Floor	Room Number	Use	SAMPLE	Sample	Date	Asbestos	% of	Tradenname			Description of	Asbestos Content	Potential for	Recommended	
			SAMPLE REP	ID	DD/MM/YY	Type	Asbestos	ACM Product	Condition	Priority	Sample Location	In Area	Disturbance	Action	Comments
B	B13	Lunch Room	Sample	B67-ASB.57	09-Nov-15	No Asbestos Detected					B13 Lunch Room - Ducting Adhesive Adjacent Exit Door Above Access Hatch	No Accessible ACM			
B	B13	Lunch Room	Sample	B67-ASB.74	09-Nov-15	No Asbestos Detected					B13 Lunch Room - Sheet Flooring	No Accessible ACM			
B	B14	Mechanical Room #2	Sample	B67-ASB.51	09-Nov-15	No Asbestos Detected					B14 Boiler Room #2 - Plaster With Skim Coat Adjacent Breaker Box	Gasket Material			
B	B14	Mechanical Room #2	Sample	B67-ASB.52	09-Nov-15	No Asbestos Detected					B14 Boiler Room #2 - Mud Compound At Flange On Top Of Boiler	Gasket Material			
B	B14	Mechanical Room #2	Sample	B67-ASB.53	09-Nov-15	No Asbestos Detected					B14 Boiler Room #2 - Mud/Plaster On Window Seam North East Corner Behind AHU	Gasket Material			
B	B14	Mechanical Room #2	Sample	B67-ASB.54	09-Nov-15	No Asbestos Detected					B14 Boiler Room #2 - Debris On Floor North East Corner Behind AHU	Gasket Material			
B	B14	Mechanical Room #2	Sample	B67-ASB.55a	09-Nov-15	No Asbestos Detected					B14 Boiler Room #2 - Plaster Skim Coat In North Wall Cavity	Gasket Material			
B	B14	Mechanical Room #2	Sample	B67-ASB.55b	09-Nov-15	No Asbestos Detected					B14 Boiler Room #2 - Plaster Base Coat 1 In North Wall Cavity	Gasket Material			
B	B14	Mechanical Room #2	Sample	B67-ASB.55c	09-Nov-15	No Asbestos Detected					B14 Boiler Room #2 - Plaster Base Coat 2 In North Wall Cavity	Gasket Material			
B	B14	Mechanical Room #2	Sample	B67-ASB.56	09-Nov-15	No Asbestos Detected					B14 Boiler Room #2 - Insulation In Ducting North East Corner Of AHU	Gasket Material			
B	B14	Mechanical Room #2	Sample	B67-ASB.59	09-Nov-15	No Asbestos Detected					B14 Boiler Room #2 - Tar Behind Lineal Pipe Insulation Above Black Valve	Gasket Material			
B	B14	Mechanical Room #2	Sample	B67-ASB.60	09-Nov-15	No Asbestos Detected					B14 Boiler Room #2 - Small Pipefitting Compound At "T-Joint" Adjacent Red & White Valve	Gasket Material			
B	B14	Mechanical Room #2	Sample	B67-ASB.61	09-Nov-15	No Asbestos Detected					B14 Boiler Room #2 - Medium Pipefitting Compound On Red & White Steam Line Overhead	Gasket Material			
B	B14	Mechanical Room #2	Sample	B67-ASB.62	09-Nov-15	No Asbestos Detected					B14 Boiler Room #2 - Mud Compound Medium End Cap Top Front Of Boiler	Gasket Material			
B	B14	Mechanical Room #2	Sample	B67-ASB.63	09-Nov-15	No Asbestos Detected					B14 Boiler Room #2 - Small Pipefitting Compound Adjacent Flange On Front Top Boiler	Gasket Material			
B	B14	Mechanical Room #2	Sample	B67-ASB.64	09-Nov-15	No Asbestos Detected					B14 Boiler Room #2 - Small Pipefitting Compound Adjacent Red & White Steam Line	Gasket Material			

City of Saskatoon - Mendel Art Gallery															
SAMPLE DATA															
Floor	Room Number	Use	SAMPLE	Sample	Date	Asbestos	% of	Tradename			Description of	Asbestos Content	Potential for	Recommended	Comments
			SAMPLE REP	ID	DD/MM/YY	Type	Asbestos	ACM Product	Condition	Priority	Sample Location	In Area	Disturbance	Action	
B	B14	Mechanical Room #2	Sample	B67-ASB.73	09-Nov-15	No Asbestos Detected					B14 Mech. Rm. 2 - Cinder Block On West Wall Adjacent Chem Mixer	Gasket Material			
B	B14	Mechanical Room #2	Sample	B67-ASB.94	24-Nov-15	Chrysotile	70%	Gasket Material	Good	3	B14 Boiler Room 2 - Rope Gasket Material On The Underside Of The Duct In The Northwest Corner Of Room.	Gasket Material	Moderate	Manage	The gasket is located around the supply air intake duct penetration on the north wall and on the underside of the duct in the northwest corner of the room.
B		B14 Corridor	Sample Rep.	B67-ASB.35	26-Oct-15	Chrysotile	7%	Vinyl Asbestos Tile	Good	3	Projector Room B02 - 9" x 9" Crème With Brown Streak Floor Tile	Vinyl Asbestos Tile	Low	Manage	
B		B14 Washroom	Sample Rep.	B67-ASB.35	26-Oct-15	Chrysotile	7%	Vinyl Asbestos Tile	Good	3	Projector Room B02 - 9" x 9" Crème With Brown Streak Floor Tile	Vinyl Asbestos Tile	Low	Manage	
B	B15a	Office	Sample Rep.	B67-ASB.35	26-Oct-15	Chrysotile	7%	Vinyl Asbestos Tile	Good	3	Projector Room B02 - 9" x 9" Crème With Brown Streak Floor Tile	Vinyl Asbestos Tile, Pipeline Fitting Compound	Low	Manage	
B	B15b	Office	Sample Rep.	B67-ASB.35	26-Oct-15	Chrysotile	7%	Vinyl Asbestos Tile	Good	3	Projector Room B02 - 9" x 9" Crème With Brown Streak Floor Tile	Vinyl Asbestos Tile, Pipeline Fitting Compound	Low	Manage	
B	B15c	Office	Sample	B67-ASB.82	20-Nov-15	Chrysotile	70%	Pipeline Fitting Compound	Good	3	B15c Office Space - Medium Pipeline Fitting Compound Above Suspended Ceiling Adjacent Door & Cabinet	Vinyl Asbestos Tile, Pipeline Fitting Compound	Low	Manage	Fittings are above the suspended ceiling throughout the B15 Office Space.
B	B15c	Office	Sample	B67-ASB.83	20-Nov-15	No Asbestos Detected					B15c Office Space - Debris On Top Of Ducting Above Suspended Ceiling	Vinyl Asbestos Tile, Pipeline Fitting Compound			
B	B15c	Office	Sample Rep.	B67-ASB.35	26-Oct-15	Chrysotile	7%	Vinyl Asbestos Tile	Good	3	Projector Room B02 - 9" x 9" Crème With Brown Streak Floor Tile	Vinyl Asbestos Tile, Pipeline Fitting Compound	Low	Manage	
B	B15d	Office	Sample Rep.	B67-ASB.35	26-Oct-15	Chrysotile	7%	Vinyl Asbestos Tile	Good	3	Projector Room B02 - 9" x 9" Crème With Brown Streak Floor Tile	Vinyl Asbestos Tile, Pipeline Fitting Compound	Low	Manage	
B	B15e	Office	Sample Rep.	B67-ASB.35	26-Oct-15	Chrysotile	7%	Vinyl Asbestos Tile	Good	3	Projector Room B02 - 9" x 9" Crème With Brown Streak Floor Tile	Vinyl Asbestos Tile, Pipeline Fitting Compound	Low	Manage	
B	B15f	Office	Sample Rep.	B67-ASB.35	26-Oct-15	Chrysotile	7%	Vinyl Asbestos Tile	Good	3	Projector Room B02 - 9" x 9" Crème With Brown Streak Floor Tile	Vinyl Asbestos Tile, Pipeline Fitting Compound	Low	Manage	
B	B15g	Office	Sample Rep.	B67-ASB.35	26-Oct-15	Chrysotile	7%	Vinyl Asbestos Tile	Good	3	Projector Room B02 - 9" x 9" Crème With Brown Streak Floor Tile	Vinyl Asbestos Tile, Pipeline Fitting Compound	Low	Manage	
B	B16	Office	Sample Rep.	B67-ASB.35	26-Oct-15	Chrysotile	7%	Vinyl Asbestos Tile	Good	3	Projector Room B02 - 9" x 9" Crème With Brown Streak Floor Tile	Vinyl Asbestos Tile, Pipeline Fitting Compound	Low	Manage	
B	B17a	Office	Sample Rep.	B67-ASB.35	26-Oct-15	Chrysotile	7%	Vinyl Asbestos Tile	Good	3	Projector Room B02 - 9" x 9" Crème With Brown Streak Floor Tile	Vinyl Asbestos Tile, Pipeline Fitting Compound	Low	Manage	Fittings are above the suspended ceiling throughout the B17 Office Space.
B	B17a	Office	Sample Rep.	B67-ASB.7	26-Oct-15	Chrysotile	70%	Pipeline Fitting Compound	Good	3	Mech. Rm. B04 - Red Medium Pipefitting Compound At Back Of Auditorium AHU.	Vinyl Asbestos Tile, Pipeline Fitting Compound	Low	Manage	Pipe Fitting Compound located in Southeast corner as well as above suspended ceiling above window

City of Saskatoon - Mendel Art Gallery															
SAMPLE DATA															
Floor	Room Number	Use	SAMPLE SAMPLE REP	Sample ID	Date DD/MM/YY	Asbestos Type	% of Asbestos	Tradename ACM Product	Condition	Priority	Description of Sample Location	Asbestos Content In Area	Potential for Disturbance	Recommended Action	Comments
B	B17b	Office	Sample Rep.	B67-ASB.35	26-Oct-15	Chrysotile	7%	Vinyl Asbestos Tile	Good	3	Projector Room B02 - 9" x 9" Crème With Brown Streak Floor Tile	Vinyl Asbestos Tile, Pipeline Fitting Compound	Low	Manage	
B	B17b	Office	Sample Rep.	B67-ASB.7	26-Oct-15	Chrysotile	70%	Pipeline Fitting Compound	Good	3	Mech. Rm. B04 - Red Medium Pipefitting Compound At Back Of Auditorium AHU.	Vinyl Asbestos Tile, Pipeline Fitting Compound	Low	Manage	Pipe Fitting Compound located above suspended ceiling above cubicle wall.
B	B18a	Office	Sample Rep.	B67-ASB.7	26-Oct-15	Chrysotile	70%	Pipeline Fitting Compound	Good	3	Mech. Rm. B04 - Red Medium Pipefitting Compound At Back Of Auditorium AHU.	Pipeline Fitting Compound, Plaster Base Coat	Low	Manage	
B	B18b	Office										Pipeline Fitting Compound, Plaster Base Coat			
B	B18c	Office										Pipeline Fitting Compound, Plaster Base Coat			
B	B18d	Office	Sample Rep.	B67-ASB.7	26-Oct-15	Chrysotile	70%	Pipeline Fitting Compound	Good	3	Mech. Rm. B04 - Red Medium Pipefitting Compound At Back Of Auditorium AHU.	Pipeline Fitting Compound, Plaster Base Coat	Low	Manage	Pipe Fitting Compound located in Southeast corner above suspended ceiling.
B	B18e	Office	Sample	B67-ASB.85	20-Nov-15	No Asbestos Detected					B18e Office Space - Sheet Flooring Adjacent Entry	Pipeline Fitting Compound, Plaster Base Coat			
B	B18e	Office	Sample	B67-ASB.86a	20-Nov-15	No Asbestos Detected					B18e Office Space - Plaster Skim Coat	Pipeline Fitting Compound, Plaster Base Coat			
B	B18e	Office	Sample	B67-ASB.86b	20-Nov-15	Chrysotile	2%	Plaster Base Coat	Good	3	B18e Office Space - Plaster Base Coat	Pipeline Fitting Compound, Plaster Base Coat	Low	Manage	
B	B19	Office	Sample Rep.	B67-ASB.7	26-Oct-15	Chrysotile	70%	Pipeline Fitting Compound	Moderate	2	Mech. Rm. B04 - Red Medium Pipefitting Compound At Back Of Auditorium AHU.	Pipeline Fitting Compound	Moderate	Remove	Remove fittings above metal slate ceiling structure in northwest corner in the future due to slight water damage.
B	B19b	Office	Sample	B67-ASB.84	20-Nov-15	No Asbestos Detected					B19b Office Space - Drywall Mud Compound				19b & 19c are one in the same room. May be asbestos containing mud compound on the pipeline above the metal slate ceiling structure that is inaccessible to identify.
B	B19c	Office													19b & 19c are one in the same room. May be asbestos containing mud compound on the pipeline above the metal slate ceiling structure that is inaccessible to identify.
B	B19d	Office	Sample Rep.	B67-ASB.7	26-Oct-15	Chrysotile	70%	Pipeline Fitting Compound	Good	3	Mech. Rm. B04 - Red Medium Pipefitting Compound At Back Of Auditorium AHU.	Pipeline Fitting Compound	Low	Manage	
B	B20	Vestibule	Sample Rep.	B67-ASB.7	26-Oct-15	Chrysotile	70%	Pipeline Fitting Compound	Good	3	Mech. Rm. B04 - Red Medium Pipefitting Compound At Back Of Auditorium AHU.	Vinyl Asbestos Tile, Pipeline Fitting Compound	Low	Manage	Fittings above drywall ceiling. Some were accessible from one access ceiling panel to identify with red paint. Consider all fittings throughout the ceiling space to be ACM.
B	B20	Vestibule	Sample Rep.	B67-ASB.35	26-Oct-15	Chrysotile	7%	Vinyl Asbestos Tile	Good	3	Projector Room B02 - 9" x 9" Crème With Brown Streak Floor Tile	Vinyl Asbestos Tile, Pipeline Fitting Compound	Low	Manage	

City of Saskatoon - Mendel Art Gallery															
			SAMPLE DATA												
Floor	Room Number	Use	SAMPLE SAMPLE REP	Sample ID	Date DD/MM/YY	Asbestos Type	% of Asbestos	Tradename ACM Product	Condition	Priority	Description of Sample Location	Asbestos Content In Area	Potential for Disturbance	Recommended Action	Comments
B	B21	Conservatory Work Shop	Sample	B67-ASB.68	09-Nov-15	No Asbestos Detected					B21 Conservatory Workshop - Plaster & Skim Coat North Wall	No Accessible ACM			
B	B21	Conservatory Work Shop	Sample	B67-ASB.69	09-Nov-15	No Asbestos Detected					B21 Conservatory Workshop - Concrete & Skim Coat South Wall	No Accessible ACM			
B	B22	Conservatory Storage										No Accessible ACM			
B	B23	Office	Sample Rep.	B67-ASB.35	26-Oct-15	Chrysotile	7%	Vinyl Asbestos Tile	Good	3	Projector Room B02 - 9" x 9" Crème With Brown Streak Floor Tile	Vinyl Asbestos Tile	Low	Manage	
B	B24	Men's Washroom	Sample Rep.	B67-ASB.7	26-Oct-15	Chrysotile	70%	Pipeline Fitting Compound	Good	3	Mech. Rm. B04 - Red Medium Pipefitting Compound At Back Of Auditorium AHU.	Pipeline Fitting Compound	Low	Manage	The fittings are located above the inaccessible ceiling.
B	B25	Men's Washroom	Sample Rep.	B67-ASB.7	26-Oct-15	Chrysotile	70%	Pipeline Fitting Compound	Good	3	Mech. Rm. B04 - Red Medium Pipefitting Compound At Back Of Auditorium AHU.	Pipeline Fitting Compound	Low	Manage	The fittings are located above the inaccessible ceiling and pipe chase.
B	B26	Vestibule	Sample	B67-ASB.67	09-Nov-15	Chrysotile	40%	Pipeline Fitting Compound	Moderate	1	B26 Vestibule - Small Pipefitting Compound Above Drywall Ceiling	Pipeline Fitting Compound	Moderate	Cleanup/Manage	Cleanup Debris above access hatch.
B	B26	Vestibule	Sample	B67-ASB.80	20-Nov-15	No Asbestos Detected					B26 Vestibule - Drywall Mud Compound	Pipeline Fitting Compound			
B	B26	Vestibule	Sample	B67-ASB.81	20-Nov-15	No Asbestos Detected					B26 Vestibule - Plaster Base Coat	Pipeline Fitting Compound			
B	B27	Women's Washroom	Sample	B67-ASB.66	09-Nov-15	No Asbestos Detected					B27 Women's Washroom - Plaster/Vermiculite Debris Above Access Hatch Over Sink	Pipeline Fitting Compound			
B	B27	Women's Washroom	Sample Rep.	B67-ASB.7	26-Oct-15	Chrysotile	70%	Pipeline Fitting Compound	Good	3	Mech. Rm. B04 - Red Medium Pipefitting Compound At Back Of Auditorium AHU.	Pipeline Fitting Compound	Low	Manage	The fittings are located above the inaccessible ceiling.
B	B28	Electrical	Sample	B67-ASB.34	26-Oct-15	No Asbestos Detected					Electrical B28 - Fire-stop Material Upper South Wall	No Accessible ACM			
B	B29	Transformer Vault	Sample Rep.	B67-ASB.4	12-May-15	Chrysotile	40%	Mud Compound	Good	3	Mech. Rm. B04 - Mud/Insulation On Overhead Ducting Adjacent, Blue Boiler	Mud Compound, Spray-Applied Fireproofing	Low	Manage	
B	B29	Transformer Vault	Sample	B67-ASB.95	01-Dec-15	Amosite	60%	Spray-Applied Fireproofing	Mod/Good	2	B29 - Spray-Applied Fireproofing On The Ceiling.	Mud Compound, Spray-Applied Fireproofing	Low/Mod	Remove	Removal of the fireproofing is recommended in future planning.
B	S1	Stairwell										No Accessible ACM			
B	S2	Stairwell										No Accessible ACM			
B	S3	Stairwell										No Accessible ACM			

City of Saskatoon - Mendel Art Gallery															
			SAMPLE DATA												
Floor	Room Number	Use	SAMPLE SAMPLE REP	Sample ID	Date DD/MM/YY	Asbestos Type	% of Asbestos	Tradenname ACM Product	Condition	Priority	Description of Sample Location	Asbestos Content In Area	Potential for Disturbance	Recommended Action	Comments
B	S4	Stairwell										No Accessible ACM			
B		Exit Courtyard	Sample	B67-ASB.72	09-Nov-15	No Asbestos Detected					Exit Courtyard - Brick Mortar East Wall	No Accessible ACM			
M	100	Vestibule										No Accessible ACM			
M	101	Lobby	Sample Rep.	B67-ASB.1	30-Apr-13	Chrysotile	15%	Stipple Ceiling Texture	Good	3	B01 - Lobby - Stipple Textured Ceiling Material	Stipple Textured Ceiling Material	Low	Manage	
M	102	Gift Shop	Sample Rep.	B67-ASB.1	30-Apr-13	Chrysotile	15%	Stipple Ceiling Texture	Good	3	B01 - Lobby - Stipple Textured Ceiling Material	Stipple Textured Ceiling Material	Low	Manage	
M	103	Storage	Sample Rep.	B67-ASB.35	26-Oct-15	Chrysotile	7%	Vinyl Asbestos Tile	Good	3	Projector Room B02 - 9" x 9" Crème With Brown Streak Floor Tile	Vinyl Asbestos Tile	Low	Manage	
M	104	Foyer	Sample Rep.	B67-ASB.19	26-Oct-15	Chrysotile	70%	Pipeline Fitting Compound	Moderate	1	Mech. Rm. B04 - Small Pipefitting Compound On Red Line Adjacent Front Access Hatch Auditorium AHU	Pipeline Fitting Compound	Low/Mod	Cleanup/Manage	HEPA vacuum the debris on top of the rad heater.
M	105	Art Education	Sample Rep.	B67-ASB.19	26-Oct-15	Chrysotile	70%	Pipeline Fitting Compound	Moderate	1	Mech. Rm. B04 - Small Pipefitting Compound On Red Line Adjacent Front Access Hatch Auditorium AHU	Pipeline Fitting Compound	Low/Mod	Cleanup/Manage	HEPA vacuum the debris on top of the rad heater.
M	106	Office										No Accessible ACM			
M	107											No Accessible ACM			
M	108	Storage										No Accessible ACM			
M	109	Loading Dock	Sample Rep.	B67-ASB.13	26-Oct-15	Chrysotile	70%	Heat Shield Material	Good	2	B09B Corridor - Heat Shield Material In The Incandescent Light Fixture	Heat Shield Material	Low	Remove	We recommended replacing the light fixture in the future and disposing of the heat shield material as waste asbestos.
M	111	Gallery 2c										No Accessible ACM			
M	112	Gallery 3	Sample	B67-ASB.37	26-Oct-15	Chrysotile	2%	Drywall Mud Compound	Good	3	112 Gallery #3 - Textured Drywall Mud Compound Adjacent IT Storage Room 115	Drywall Mud Compound	Low	Manage	
M	112	Gallery 3	Sample	B67-ASB.48	09-Nov-15	No Asbestos Detected					112 Gallery 3 - Drywall Mud Compound North Wall Adjacent Exit	Drywall Mud Compound			
M	113	Gallery 2a										No Accessible ACM			
M	114	Gallery 2b	Sample	B67-ASB.49	09-Nov-15	No Asbestos Detected					114 Gallery 2B South Wall West Face - Plaster In Access Hatch	No Accessible ACM			
M	114	Gallery 2b	Sample	B67-ASB.50	09-Nov-15	No Asbestos Detected					114 Gallery 2B South Wall West Face - Drywall Mud Compound	No Accessible ACM			

City of Saskatoon - Mendel Art Gallery															
			SAMPLE DATA												
Floor	Room Number	Use	SAMPLE SAMPLE REP	Sample ID	Date DD/MM/YY	Asbestos Type	% of Asbestos	Tradenname ACM Product	Condition	Priority	Description of Sample Location	Asbestos Content In Area	Potential for Disturbance	Recommended Action	Comments
M	115	IT Storage	Sample	B67-ASB.39	09-Nov-15	No Asbestos Detected					115 IT Storage Room Small Storage - Concrete/Plaster Flooring With Burlap	Vinyl Asbestos Tile			
M	115	IT Storage	Sample	B67-ASB.40	09-Nov-15	Chrysotile	2%	Vinyl Asbestos Tile	Good	3	115 IT Storage Room - 1' x 1' Floor Tile Light/Dark Gray Steak	Vinyl Asbestos Tile	Low	Manage	
M	116	Stairs										No Accessible ACM			
M	117	Mendel Salon	Sample	B67-ASB.89	20-Nov-15	No Asbestos Detected					117 Mendel Salon - Drywall Mud Compound on Upper West Wall	No Accessible ACM			
M	119	Gallery 1										No Accessible ACM			
M	120	Kitchen	Sample	B67-ASB.65a	09-Nov-15	No Asbestos Detected					120 Kitchen - Plaster Skim Coat South Wall Behind Dishwasher & Sink	Vinyl Asbestos Tile, Stipple Textured Ceiling Material			
M	120	Kitchen	Sample	B67-ASB.65b	09-Nov-15	No Asbestos Detected					120 Kitchen - Plaster Base Coat South Wall Behind Dishwasher & Sink	Vinyl Asbestos Tile, Stipple Textured Ceiling Material			
M	120	Kitchen	Sample Rep.	B67-ASB.1	30-Apr-13	Chrysotile	15%	Stipple Ceiling Texture	Good	3	B01 - Lobby - Stipple Textured Ceiling Material	Vinyl Asbestos Tile, Stipple Textured Ceiling Material	Low	Manage	Stipple is located above the inaccessible ceiling.
M	120	Kitchen	Sample Rep.	B67-ASB.35	26-Oct-15	Chrysotile	7%	Vinyl Asbestos Tile	Good	3	Projector Room B02 - 9" x 9" Crème With Brown Streak Floor Tile	Vinyl Asbestos Tile, Stipple Textured Ceiling Material	Low	Manage	
M	121	Kitchen Storage	Sample Rep.	B67-ASB.1	30-Apr-13	Chrysotile	15%	Stipple Ceiling Texture	Good	3	B01 - Lobby - Stipple Textured Ceiling Material	Stipple Textured Ceiling Material	Low	Manage	
M	122	Tea Salon	Sample	B67-ASB.91	23-Nov-15	No Asbestos Detected					122 Tea Salon - Drywall Mud Compound Upper South Wall Above Windows	Stipple Textured Ceiling Material			
M	122	Tea Salon	Sample	B67-ASB.92	24-Nov-15	No Asbestos Detected					122 Tea Salon - Cement on Southwest Pillar Adjacent Entry	Stipple Textured Ceiling Material			
M	122	Tea Salon	Sample Rep.	B67-ASB.1	30-Apr-13	Chrysotile	15%	Stipple Ceiling Texture	Good	3	B01 - Lobby - Stipple Textured Ceiling Material	Stipple Textured Ceiling Material	Low	Manage	
M	123	Vestibule	Sample Rep.	B67-ASB.1	30-Apr-13	Chrysotile	15%	Stipple Ceiling Texture	Good	3	B01 - Lobby - Stipple Textured Ceiling Material	Stipple Textured Ceiling Material	Low	Manage	
M	124	Washroom	Sample	B67-ASB.93	24-Nov-15	No Asbestos Detected					124 Washroom - Plaster Above Ceiling Access Hatch	Stipple Textured Ceiling Material			
M	124	Washroom	Sample Rep.	B67-ASB.1	30-Apr-13	Chrysotile	15%	Stipple Ceiling Texture	Good	3	B01 - Lobby - Stipple Textured Ceiling Material	Stipple Textured Ceiling Material	Low	Manage	

City of Saskatoon - Mendel Art Gallery															
			SAMPLE DATA												
Floor	Room Number	Use	SAMPLE	Sample	Date	Asbestos	% of	Tradename			Description of	Asbestos Content	Potential for	Recommended	
			SAMPLE REP	ID	DD/MM/YY	Type	Asbestos	ACM Product	Condition	Priority	Sample Location	In Area	Disturbance	Action	Comments
M	125	Coat Room	Sample Rep.	B67-ASB.1	30-Apr-13	Chrysotile	15%	Stipple Ceiling Texture	Good	3	B01 - Lobby - Stipple Textured Ceiling Material	Stipple Textured Ceiling Material	Low	Manage	
M	127	Vestibule										No Accessible ACM			
M	128	Conservatory	Sample	B67-ASB.70	09-Nov-15	Chrysotile	30%	Transite Board	Good	3	128 Conservatory - Transite Board	Transite Board	Low	Manage	
M	128	Conservatory	Sample	B67-ASB.71	09-Nov-15	No Asbestos Detected					128 Conservatory - Mortar on Rock Water Fountain	Transite Board			
M	S1	Stairwell										No Accessible ACM			
M	S2	Stairwell										No Accessible ACM			
M	S3	Stairwell										No Accessible ACM			
M	S4	Stairwell										No Accessible ACM			
2	200	Director	Sample	B67-ASB.90	20-Nov-15	No Asbestos Detected					200 Director Office - Drywall Mud Compound	No Accessible ACM			
2	201	Curator										No Accessible ACM			
2	202a	Clerk Office										No Accessible ACM			
2	202b	File Area										No Accessible ACM			
2	203	Clerk Office	Sample	B67-ASB.41	09-Nov-15	No Asbestos Detected					203 Clerk Office - 2' x 2' Grey Ceiling Tile	No Accessible ACM			
2	203	Clerk Office	Sample	B67-ASB.42	09-Nov-15	No Asbestos Detected					203 Clerk Office -Plaster Skim On Bottom Side Of Ceiling Tile	No Accessible ACM			
2	204	Washroom	Sample	B67-ASB.43	09-Nov-15	No Asbestos Detected					204 Washroom - Sheet Flooring	No Accessible ACM			
2	205	Business Manager	Sample	B67-ASB.44	09-Nov-15	No Asbestos Detected					205 Business Manager Office - 2' x 2' Fissure & Pinhole Ceiling Tile	Drywall Mud Compound			
2	205	Business Manager	Sample	B67-ASB.45	09-Nov-15	No Asbestos Detected					205 Business Manager Office - Tar/Debris In South East Corner Above Access Hatch Above Suspended Ceiling	Drywall Mud Compound			
2	205	Business Manager	Sample	B67-ASB.46	09-Nov-15	No Asbestos Detected					205 Business Manager Office - Wall/Ceiling Plaster	Drywall Mud Compound			
2	205	Business Manager	Sample	B67-ASB.47	09-Nov-15	Chrysotile	3%	Drywall Mud Compound	Good	3	205 Business Manager Office - Drywall Mud Compound Above Suspended Ceiling	Drywall Mud Compound	Low	Manage	
R		Rooftop	Sample	B67-ASB.96	01-Dec-15	No Asbestos Detected					Rooftop - Insulation Within The Boiler Breeching Stack Between The Inner And Outer Cladding.				

APPENDIX III

FLOOR PLANS



City of
Saskatoon

Infrastructure Services
Department

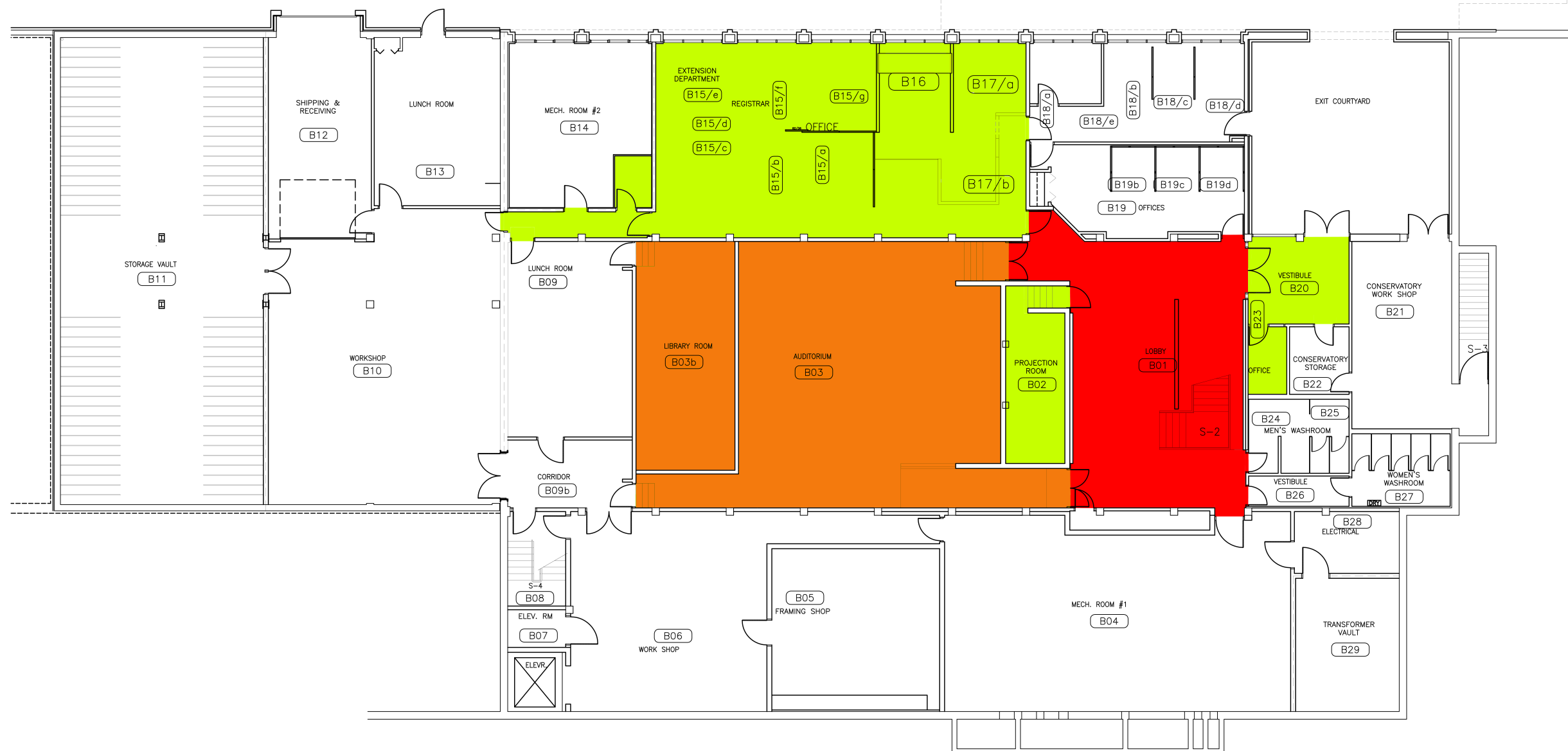
Facilities Branch
306-975-3300

NOTE:
THESE DRAWINGS HAVE BEEN PREPARED
BASED ON INFORMATION PROVIDED BY
OTHERS. THE CITY HAS TAKEN STEPS
TO VERIFY THE ACCURACY AND/OR
COMPLETENESS OF THIS INFORMATION
BUT SHALL NOT BE RESPONSIBLE FOR
AND ERRORS OR OMISSIONS THAT
MAY BE INCORPORATED AS A RESULT
OF ERRONEOUS INFORMATION PROVIDED
BY OTHERS THAT WAS NOT ABLE TO BE
VISUALLY CONFIRMED.

- GENERAL NOTES:
1. ALL DIMENSIONS ARE IN MILLIMETRES
 2. DRAWINGS ARE NOT TO BE SCALED.
 3. ALL DRAWINGS TO BE READ IN CON-
JUNCTION WITH THE SPECIFICATIONS
UNLESS OTHERWISE NOTED.
 4. VERIFY SITE CONDITIONS, DIMENSIONS
AND LOCATION OF ALL UTILITIES PRIOR
TO THE START OF CONSTRUCTION.
 5. REPORT ALL DISCREPANCIES TO THE
CONSULTANT.

Legend

- Asbestos Floor Tile -
- Asbestos Floor Tile
and Textured Ceiling -
- Asbestos Textured Ceiling -



REV	ISSUED FOR	DATE

DESIGNED BY:	DRAWN BY:	CHECKED BY:	REQUESTED BY:

SCALE:	DATE:
1:200 (11 x 17)	

SHEET NAME	Asbuilt
Lower Floor Base Plan	

PROJECT TITLE
601 Mendel Art Gallery

PROJECT NO.	SHEET

REV. NO.	



City of
Saskatoon

Infrastructure Services
Department

Facilities Branch
306-975-3300

NOTE:
THESE DRAWINGS HAVE BEEN PREPARED
BASED ON INFORMATION PROVIDED BY
OTHERS. THE CITY HAS TAKEN STEPS
TO VERIFY THE ACCURACY AND/OR
COMPLETENESS OF THIS INFORMATION
BUT SHALL NOT BE RESPONSIBLE FOR
AND ERRORS OR OMISSIONS THAT
MAY BE INCORPORATED AS A RESULT
OF ERRONEOUS INFORMATION PROVIDED
BY OTHERS THAT WAS NOT ABLE TO BE
VISUALLY CONFIRMED.

- GENERAL NOTES:
1. ALL DIMENSIONS ARE IN MILLIMETRES
 2. DRAWINGS ARE NOT TO BE SCALED.
 3. ALL DRAWINGS TO BE READ IN CON-
JUNCTION WITH THE SPECIFICATIONS
UNLESS OTHERWISE NOTED.
 4. VERIFY SITE CONDITIONS, DIMENSIONS
AND LOCATION OF ALL UTILITIES PRIOR
TO THE START OF CONSTRUCTION.
 5. REPORT ALL DISCREPANCIES TO THE
CONSULTANT.

Legend

- Asbestos Floor Tile -
- Asbestos Stipple Texture -
- Asbestos Transite Board -
- Asbestos Floor Tile &
Stipple Texture -



REV ISSUED FOR DATE

DESIGNED BY: DRAWN BY: CHECKED BY: REQUESTED BY:

SCALE: 1:250 (11 x 17) DATE: 16 SEP 04

SHEET NAME Asbuilt

Main Floor
Base Plan

PROJECT TITLE
**601
Mendel Art
Gallery**

PROJECT NO. SHEET

REV. NO.

BERSCH CONSULTING LTD.

January 31, 2018

City of Saskatoon
1101 Avenue P North
Saskatoon, SK
S7L 7K6

ATTENTION: Hazel Fernandez

SUBJECT: Bulk Sample Analysis Report Mendel Art Gallery

Please find attached the laboratory results for the bulk samples collected from the Mendel Art Gallery in Saskatoon, Sk. The samples were analyzed for the identification of asbestos. Asbestos **was** detected within the samples.

The results for the samples submitted were obtained by examination in accordance with the current USEPA 600/R-93/116 Method for the analysis of asbestos in building materials using polarized light microscopy and dispersion staining techniques. The detection limit of this method is listed as less than 1% by volume.

This test report relates only to the materials sent for examination and any use or extension of the information by the client of these results is the responsibility of the client.

If any questions arise on the results of the attached information, please contact our office. Thank you for this opportunity of service.

Sincerely,



Brad Berschiminsky
Bersch Consulting Ltd.
B67BLA30H mendel

Bersch Consulting Ltd.244-2002 Quebec Avenue
Saskatoon, SK S7K 1W4

B67BAA30H

BULK SAMPLE ANALYSIS REPORT**PROJECT NO: B67.18**
CLIENT: CITY OF SASKATOON
CONTACT: HAZEL FERNANDEZ
LOCATION: MENDEL ART GALLERY

NO.	DATE	SAMPLE INFORMATION	ASBESTOS	%	ANALYST
1	19-Jan-18	Rm 102- Gift Shop- Floor Tile Mastic	Chrysotile	3%	EMSL
2	19-Jan-18	Rm 117- Tea Salon- Floor Tile Mastic	Chrysotile	5%	EMSL
3	19-Jan-18	B03- Auditorium- Floor Tile Mastic	Chrysotile	5%	EMSL
4	19-Jan-18	B17- Offices- Floor Tile Mastic	Chrysotile	5%	EMSL
5	19-Jan-18	B20-B23- Office- Floor Tile Mastic	Chrysotile	5%	EMSL
6	23-Jan-18	B03b- Beneath Sheet Flooring- Black Floor Tile Mastic	No Asbestos Detected		EMSL
7	23-Jan-18	B18e- Beneath Sheet Flooring- Beige Mastic	No Asbestos Detected		EMSL
8	23-Jan-18	B14- North Wall- Packing Around Duct	Chrysotile	25%	EMSL
9	23-Jan-18	B03- Precast Ceiling- Stipple Overspray	Chrysotile	10%	EMSL

Bersch Consulting Ltd.244-2002 Quebec Avenue
Saskatoon, SK S7K 1W4

B67BAA30H

BULK SAMPLE ANALYSIS REPORT**PROJECT NO: B67.18**
CLIENT: CITY OF SASKATOON
CONTACT: HAZEL FERNANDEZ
LOCATION: MENDEL ART GALLERY

NO.	DATE	SAMPLE INFORMATION	ASBESTOS	%	ANALYST
10	30-Jan-18	Rm 102- Gift Shop- Floor Tile Mastic	Chrysotile	1%	EMSL
11	30-Jan-18	Rm 119- Remaining Floor Tile Mastic	Chrysotile	2%	EMSL
12	30-Jan-18	Rm 119- Black Coating at Supply Air	No Asbestos Detected		EMSL
13	30-Jan-18	Rm 122- Adj. South Window- Mortar/Concrete Floor	No Asbestos Detected		EMSL
14	30-Jan-18	Rm 101- Lobby- Concrete/Mortar Floor beneath Ceramic Tile	No Asbestos Detected		EMSL
15	30-Jan-18	B02 Ceiling- Cork Mastic	Chrysotile	2%	EMSL
16a	30-Jan-18	B01 Floor- Mortar	No Asbestos Detected		EMSL
16b	30-Jan-18	B01 Floor- Black Mastic on Mortar	Chrysotile	2%	EMSL
17a	30-Jan-18	Rm 123 & 119 Doorway- Mortar	No Asbestos Detected		EMSL
17b	30-Jan-18	Rm 123 & 119 Doorway- Black Mastic on Mortar	Chrysotile	1%	EMSL

BERSCH & ASSOCIATES LTD.

April 27, 2016

City of Saskatoon
Mendel Art Gallery
950 Spadina Crescent East
Saskatoon, SK
S7K 3L6

ATTENTION: Hazel Fernandez

SUBJECT: Bulk Sample Analysis Report / Site Investigation – Mendel Art Gallery Drywall Mud Bulk Analysis.

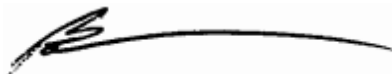
Please find attached the laboratory results for the bulk samples collected from the Mendel Art Gallery on April 15 & 16, 2016 located at 950 Spadina Crescent East, Saskatoon, SK. The additional sampling was requested to determine what drywall and vermiculite contains asbestos in addition to the Asbestos Survey Report dated December 2015 Bersch File No: B67SRL06. The samples were analyzed for the identification of asbestos. Asbestos **was** detected in two of the drywall mud compound samples and the vermiculite sample.

The results for the drywall mud compound samples submitted were obtained by examination in accordance with the current USEPA 600/R-93/116 Method for the analysis of asbestos in building materials using polarized light microscopy and dispersion staining techniques. The detection limit of this method is listed as less than 1% by volume.

The results for the vermiculite bulk sample was obtained by examination in accordance with the EPA 600/R-93/116 method for 0.1% target analytical sensitivity using analytical electron microscopy. The detection limit for this analytical method is listed as greater than 0.1% amphibole asbestos.

This test report relates only to the materials sent for examination and any use or extension of the information by the client of these results is the responsibility of the client. If any questions arise on the results of the attached information, please contact our office 306 222 7477. Thank you for this opportunity of service!

Sincerely,



Brad Berschiminsky
Bersch & Associates Ltd.
File: B67BLD15F

Bersch & Associates Ltd.

B67BAD15

Box 3568

Humboldt, Sask. S0K 2A0

BULK SAMPLE ANALYSIS REPORT

PROJECT NO: B67.16
CLIENT: CITY OF SASKATOON
MENDEL ART GALLERY
CONTACT: HAZEL FERNANDEZ
LOCATION: 950 Spadina Crescent East, Saskatoon, SK.

NO.	DATE	SAMPLE INFORMATION	ASBESTOS	%	ANALYST
1	15-Apr-16	B03 - Compilation Of Drywall Mud Compound From Walls	No Asbestos Detected		WB
2	15-Apr-16	B09 - Compilation Of Drywall Mud Compound From Walls	No Asbestos Detected		WB
3a	15-Apr-16	B03b - Compilation Of Drywall Mud Compound From Walls - Joint Compound 1	No Asbestos Detected		WB
3b	15-Apr-16	B03b - Compilation Of Drywall Mud Compound From Walls - Joint Compound 2	No Asbestos Detected		WB
4a	15-Apr-16	B09 - Ceiling Drywall Mud Compound - Joint Compound	No Asbestos Detected		WB
4b	15-Apr-16	B09 - Ceiling Drywall Mud Compound - Skim Coat	No Asbestos Detected		WB
5	15-Apr-16	B11 - Compilation Of Columns & Ceiling Drywall Mud Compound	Chrysotile	1-5%	WB

Bersch & Associates Ltd.

B67BAD15

Box 3568

Humboldt, Sask. S0K 2A0

BULK SAMPLE ANALYSIS REPORT**PROJECT NO: B67.16****CLIENT: CITY OF SASKATOON
MENDEL ART GALLERY****CONTACT: HAZEL FERNANDEZ****LOCATION: 950 Spadina Crescent East, Saskatoon, SK.**

NO.	DATE	SAMPLE INFORMATION	ASBESTOS	%	ANALYST
6	15-Apr-16	B12 - Compilation Of Drywall Mud Compound From Walls	No Asbestos Detected		WB
7a	15-Apr-16	118 - Compilation Of Drywall Mud Compound From Walls - Joint Compound 1	No Asbestos Detected		WB
7b	15-Apr-16	118 - Compilation Of Drywall Mud Compound From Walls - Joint Compound 2	No Asbestos Detected		WB
8	15-Apr-16	111 - Compilation Of Drywall Mud Compound From Walls	No Asbestos Detected		WB
9	15-Apr-16	113 - Compilation Of Drywall Mud Compound From Walls	No Asbestos Detected		WB
10	15-Apr-16	202a - Compilation Of Drywall Mud Compound From Walls	No Asbestos Detected		WB
11	15-Apr-16	105 - Compilation Of Drywall Mud Compound From Walls	No Asbestos Detected		WB

Bersch & Associates Ltd.

B67BAD15

Box 3568

Humboldt, Sask. S0K 2A0

BULK SAMPLE ANALYSIS REPORT**PROJECT NO: B67.16****CLIENT: CITY OF SASKATOON
MENDEL ART GALLERY****CONTACT: HAZEL FERNANDEZ****LOCATION: 950 Spadina Crescent East, Saskatoon, SK.**

NO.	DATE	SAMPLE INFORMATION	ASBESTOS	%	ANALYST
12	15-Apr-16	106/107 - Compilation Of Drywall Mud Compound From Walls	No Asbestos Detected		WB
13	15-Apr-16	112 - Compilation Of Drywall Mud Compound From Walls On West Half Of Gallery 3	No Asbestos Detected		WB
14	15-Apr-16	112 - Compilation Of Drywall Mud Compound From Walls On East Half Of Gallery 3	No Asbestos Detected		WB
15a	15-Apr-16	117 Mendel Salon - Compilation Of Drywall Mud Compound From Walls - Joint Compound 1	No Asbestos Detected		WB
15b	15-Apr-16	117 Mendel Salon - Compilation Of Drywall Mud Compound From Walls - Joint Compound 2	No Asbestos Detected		WB
16	15-Apr-16	B13 - Ceiling Drywall Mud Compound	Chrysotile	1-5%	WB
17	15-Apr-16	B13 - Compilation Of Drywall Mud Compound From Walls	No Asbestos Detected		WB

Bersch & Associates Ltd.

B67BAD15

Box 3568

Humboldt, Sask. S0K 2A0

BULK SAMPLE ANALYSIS REPORT**PROJECT NO: B67.16****CLIENT: CITY OF SASKATOON
MENDEL ART GALLERY****CONTACT: HAZEL FERNANDEZ****LOCATION: 950 Spadina Crescent East, Saskatoon, SK.**

NO.	DATE	SAMPLE INFORMATION	ASBESTOS	%	ANALYST
18	15-Apr-16	B15/B16 - Compilation Of Drywall Mud Compound From Walls	No Asbestos Detected		WB
19a	15-Apr-16	B01 - Compilation Of Drywall Mud Compound From Walls - Joint Compound	No Asbestos Detected		WB
19a	15-Apr-16	B01 - Compilation Of Drywall Mud Compound From Walls - Skim Coat	No Asbestos Detected		WB
20a	15-Apr-16	B20 - Compilation Of Drywall Mud Compound From Walls - Joint Compound	No Asbestos Detected		WB
20b	15-Apr-16	B20 - Compilation Of Drywall Mud Compound From Walls - Skim Coat	No Asbestos Detected		WB
21	15-Apr-16	100/101/127 - Compilation Of Ceiling Drywall Mud Compound	No Asbestos Detected		WB
22	15-Apr-16	124/125 - Compilation Of Drywall Mud Compound From Walls	No Asbestos Detected		WB

Bersch & Associates Ltd.

B67BAD15

Box 3568

Humboldt, Sask. S0K 2A0

BULK SAMPLE ANALYSIS REPORT**PROJECT NO: B67.16****CLIENT: CITY OF SASKATOON
MENDEL ART GALLERY****CONTACT: HAZEL FERNANDEZ****LOCATION: 950 Spadina Crescent East, Saskatoon, SK.**

NO.	DATE	SAMPLE INFORMATION	ASBESTOS	%	ANALYST
23a	15-Apr-16	122 Tea Salon - Compilation Of Drywall Mud Compound From Walls - Joint Compound	No Asbestos Detected		WB
23b	15-Apr-16	122 Tea Salon - Compilation Of Drywall Mud Compound From Walls - Skim Coat	No Asbestos Detected		WB
24	15-Apr-16	102 - Compilation Of Drywall Mud Compound From Walls	No Asbestos Detected		WB
25a	15-Apr-16	103 - Compilation Of Drywall Mud Compound From Walls - Joint Compound	No Asbestos Detected		WB
25b	15-Apr-16	103 - Compilation Of Drywall Mud Compound From Walls - Skim Coat	No Asbestos Detected		WB
25c	15-Apr-16	103 - Compilation Of Drywall Mud Compound From Walls - Base Coat	No Asbestos Detected		WB
26	15-Apr-16	200 - Compilation Of Drywall Mud Compound From Walls	No Asbestos Detected		WB

Bersch & Associates Ltd.

B67BAD15

Box 3568

Humboldt, Sask. S0K 2A0

BULK SAMPLE ANALYSIS REPORT**PROJECT NO: B67.16****CLIENT: CITY OF SASKATOON
MENDEL ART GALLERY****CONTACT: HAZEL FERNANDEZ****LOCATION: 950 Spadina Crescent East, Saskatoon, SK.**

NO.	DATE	SAMPLE INFORMATION	ASBESTOS	%	ANALYST
27	15-Apr-16	201 - Compilation Of Drywall Mud Compound From Walls	No Asbestos Detected		WB
28	15-Apr-16	203 - Compilation Of Drywall Mud Compound From Walls	No Asbestos Detected		WB
29	15-Apr-16	B19 - Compilation Of Drywall Mud Compound From Walls	No Asbestos Detected		WB
30	15-Apr-16	B10/B12 - Vermiculite Within North Block Wall	Actinolite /Tremolite	> 0.1%	WB

BERSCH & ASSOCIATES LTD.

August 3rd , 2016

City of Saskatoon
Mendel Art Gallery
950 Spadina Crescent East
Saskatoon, SK
S7K 3L6

ATTENTION: Hazel Fernandez

SUBJECT: Bulk Sample Analysis Report – Mechanical Room #2 – Boiler #2

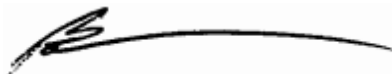
Please find attached the laboratory results for the bulk samples collected from the Mendel Art Gallery on August 2nd, 2016 located at 950 Spadina Crescent East, Saskatoon, SK. The samples were analyzed for the identification of asbestos. Asbestos **was not** detected in the samples

The results for the samples submitted were obtained by examination in accordance with the current USEPA 600/R-93/116 Method for the analysis of asbestos in building materials using polarized light microscopy and dispersion staining techniques. The detection limit of this method is listed as less than 1% by volume.

This test report relates only to the materials sent for examination and any use or extension of the information by the client of these results is the responsibility of the client.

If any questions arise on the results of the attached information, please contact our office 306 222 7477. Thank you for this opportunity of service!

Sincerely,



Brad Berschiminsky
Bersch & Associates Ltd.

File: B67BLH02F

Bersch & Associates Ltd.

B67BAH02F

Box 3568
Humboldt, Sask. S0K 2A0**BULK SAMPLE ANALYSIS REPORT**

PROJECT NO: B67.16
CLIENT: CITY OF SASKATOON
MENDAL ART GALLERY
CONTACT: HAZEL FERNANDEZ
LOCATION: 950 Spadina Crescent East, Saskatoon, SK.

NO.	DATE	SAMPLE INFORMATION	ASBESTOS	%	ANALYST
1	2-Aug-16	Mechanical Room #2 - Boiler Breech Gasket From Boiler #2	No Asbestos Detected		WB
2	2-Aug-16	Mechanical Room #2 - Burner Rope Gasket From Front of Boiler #2	No Asbestos Detected		WB
3	2-Aug-16	Mechanical Room #2 - White Insulation At Interior Boiler Joints	No Asbestos Detected		WB
4	2-Aug-16	Mechanical Room #2 - Rope Gasket From Interior Boiler Joints	No Asbestos Detected		WB
5	2-Aug-16	Internal Pot Light Fixture Black Ribbing Material	No Asbestos Detected		WB

BERSCH & ASSOCIATES LTD.

October 21, 2015

City Of Saskatoon
Mendel Art Gallery
950 Spadina Crescent East
Saskatoon, SK S7K 3L6

ATTENTION: Vince Regnier

SUBJECT: Mendel Art Gallery - Bulk Sample Analysis Report

Please find attached our laboratory's results for the third bulk material sample collected from the Mendel Art Gallery located at 950 Spadina Crescent East, Saskatoon, Saskatchewan on October 8, 2015. The sample was analyzed in our laboratory for the identification of asbestos. No asbestos detected in the white plaster material sampled..

The results for the samples collected were obtained by examination in accordance with the current USEPA 600/R-93/116 Method for the analysis of asbestos in building materials using polarized light microscopy and dispersion staining techniques. The detection limit of this method is listed as less than 1% by volume.

This test report relates only to the materials sent for examination and any use or extension of the information by the client of these results is the responsibility of the client. If any questions arise on the results of the attached information please contact our office. Thank you for this opportunity of service to your firm.

Sincerely,

Clint Berschiminsky
Bersch & Associates Ltd.
File: B67BLJ21

Bersch & Associates Ltd.

B67BAJ08B

Box 3568
Humboldt, Sask. S0K 2A0

BULK SAMPLE ANALYSIS REPORT

PROJECT NO. B67.15

CLIENT: City of Saskatoon

Infrastructure Services - Facilities Branch

Contact: Vince Regnier

Location: Mendel Art Gallery, 905 Spadina Crescent East, Saskatoon, SK.

NO.	DATE	SAMPLE INFORMATION	ASBESTOS	%	ANALYST
3	8-Oct-15	Basment Level, Boiler Room #2 Northwest Corner of Room Block Wall White Plaster Material	None		WB

BERSCH & ASSOCIATES LTD.

October 13, 2015

City Of Saskatoon
Mendel Art Gallery
950 Spadina Crescent East
Saskatoon, SK S7K 3L6

ATTENTION: Vince Regnier

SUBJECT: Mendel Art Gallery - Bulk Sample Analysis Report

Please find attached our laboratory's results for the bulk material samples collected from the Mendel Art Gallery located at 950 Spadina Crescent East, Saskatoon, Saskatchewan on October 8, 2015. The samples were analyzed in our laboratory for the identification of asbestos. Chrysotile asbestos was identified in both samples submitted for analysis.

The results for the samples submitted were obtained by examination in accordance with the current USEPA 600/R-93/116 Method for the analysis of asbestos in building materials using polarized light microscopy and dispersion staining techniques. The detection limit of this method is listed as less than 1% by volume.

This test report relates only to the materials sent for examination and any use or extension of the information by the client of these results is the responsibility of the client. If any questions arise on the results of the attached information please contact our office. Thank you for this opportunity of service to your firm.

Sincerely,



Clint Berschiminsky
Bersch & Associates Ltd.
File: B67BLJ13

Bersch & Associates Ltd.

Box 3568

Humboldt, Sask. S0K 2A0

PROJECT NO. B67.15

CLIENT: City of Saskatoon

Infrastructure Services - Facilities Branch

Contact: Vince Regnier

Location: Mendel Art Gallery, 905 Spadina Crescent East, Saskatoon, SK.

B67BAJ08

BULK SAMPLE ANALYSIS REPORT

NO.	DATE	SAMPLE INFORMATION	ASBESTOS	%	ANALYST
1	8-Oct-15	Main Floor, Cafeteria Above Kitchen Partition Wall Stipple Ceiling Texture	Chrysotile	20	WB
2	8-Oct-15	Basement Level, Boiler Room #2 Northwest Corner of Room Grey/White Duct Gasket Material	Chrysotile	70	WB

BERSCH & ASSOCIATES LTD.

September 23, 2015

City of Saskatoon
Mendal Art Gallery
950 Spadina Crescent East
Saskatoon, Sk
S7K 3L6

ATTENTION: Vince Regnier

SUBJECT: Bulk Sample Analysis Report

Please find attached the laboratory results for the bulk samples collected from Mendal Art Gallery Mechanical Room located at 950 Spadina Crescent East collected on September 14, 2015. The samples were analyzed for the identification of asbestos. Asbestos **was not** detected.

The results for the samples submitted were obtained by examination in accordance with the current USEPA 600/R-93/116 Method for the analysis of asbestos in building materials using polarized light microscopy and dispersion staining techniques. The detection limit of this method is listed as less than 1% by volume.

This test report relates only to the materials sent for examination and any use or extension of the information by the client of these results is the responsibility of the client.

If any questions arise on the results of the attached information please contact our office. Thank you for this opportunity of service!

Sincerely,

Brad Berschiminsky
Bersch & Associates Ltd.

File: B67BLI14

Bersch & Associates Ltd.

B67BAI14

Box 3568
Humboldt, Sask. S0K 2A0**BULK SAMPLE ANALYSIS REPORT**

PROJECT NO: B67.15
CLIENT: City of Saskatoon
Contact: Vince Regnier
Location: 950 Spadina Crescent East, Saskatoon, SK
Mendel Art Gallery

NO.	DATE	SAMPLE INFORMATION	ASBESTOS	%	ANALYST
1	14-Sep-15	Boiler Room - Refractory In Rear Turn Chamber Of The Boiler	No Asbestos Detected		WB
2	14-Sep-15	Boiler Room - Thin Grey Coating On The Boiler Interior End Door	No Asbestos Detected		WB

Bersch & Associates Ltd.

B67BAD30

Box 3568
Humboldt, Sask. S0K 2A0**BULK SAMPLE ANALYSIS REPORT****PROJECT NO. B67.13****CLIENT: City of Saskatoon****Infrastructure Services - Facilities Branch****Contact: Brent Anderson****Location: Mendal Art Gallery - 950 Spadina Crescent East, Saskatoon, SK.**

NO.	DATE	SAMPLE INFORMATION	ASBESTOS	%	ANALYST
1	30-Apr-13	B04 - Boiler Room #1 - Boiler breeching above blue boiler adjacent south entry	Amosite	20	WB
2	30-Apr-13	B04 - Boiler Room #1 - Pipeline fitting on medium red line above blue boiler	Chrysotile	60	WB
3	30-Apr-13	B04 - Boiler Room #1 - Med compound beneath canvass on overhead ducting to the west of boiler, adjacent west wall	Chrysotile	60	WB
4	30-Apr-13	B01 - Lobby - textured ceiling material	Chrysotile	15	WB
5	30-Apr-13	B20 - Vestibule - 9" x 9" floor tile with fine brown and black streak	Chrysotile	1 to 5	WB