



**City Hall North
Asbestos Survey Report**



January 2015

Prepared For: City of Saskatoon Infrastructure Services - Facilities Branch
3130 Laurier Drive, Saskatoon, SK.
Attn: Brent Anderson

Prepared By: Bersch & Associates Ltd.
Project No. : B67SRA16

1.0 EXECUTIVE SUMMARY

The survey of the City Hall North building located at 222 3rd Avenue North in Saskatoon, Saskatchewan entailed the inspection of all accessible suspect asbestos containing material (ACM) located throughout the facility. Materials inspected included mechanical insulating material and vinyl floor covering.

Bulk sample analysis results indicate the presence of “Chrysotile” asbestos within the City Hall North located in Saskatoon, SK. Please refer to **Appendix I for Bulk Sample Analysis** results.

The recommended actions to be implemented in reference to the ACM identified are Management. Please refer to section 5 Asbestos Abatement Discussion for definitions. It should be noted that the recommendation of “Management” as part of the asbestos action plan is based upon the premise that renovations are not scheduled throughout the area that would impact the asbestos containing material present. ***Prior to any major renovation/demolition activity, a destructive investigation is recommended to identify any inaccessible ACM that is physically concealed or isolated in areas such as enclosed wall/ceiling/floor cavities and pipe chases. Further testing of drywall mud compound may also be required prior to renovation.*** Asbestos was detected in the following forms throughout the facility:

- **Vinyl Asbestos Floor Tile** is located in various rooms throughout the City Hall North Building. The Asbestos Floor Tile is identified on the **Floor Plans** in **Appendix III** of this report.
- **The Block Walls** throughout the facility were inspected for Vermiculite content as some forms of Vermiculite do contain asbestos. No Vermiculite was observed during the asbestos inspection activity. However, a thorough destructive investigation is recommended prior to building demolition to ensure the absence of vermiculite asbestos material.

Throughout the survey of the City Hall North the Asbestos Containing Materials were assessed and given a Priority Rating of One, Two or Three, with Priority One being the items requiring the most immediate attention. See the **Survey Spreadsheet Database** in **Appendix II** for a room-by-room account.

Bersch & Associates Ltd. implemented the use of doorjamb labels that are applied to all the doorjambs of the rooms containing asbestos within the facility. This permits anyone accessing the room to easily identify the ACM present without having to reference the written report. Legends providing explanation of the abbreviations used on doorjambs were placed on the backside of all maintenance/custodial doors within the facility. Employees and contractors will use the legend as a reference to identify ACM within the areas they are working.

2.0 INTRODUCTION

Bersch & Associates Ltd. was retained by the City of Saskatoon to conduct an Asbestos Survey and Hazard Assessment of the City Hall North located in Saskatoon, SK. The survey entailed the inspection of all accessible areas of the facility; including ceiling spaces and pipe chases. The purpose of the survey was to locate, identify and assess the condition of all Asbestos Containing Materials (ACM) located throughout the facility. This report gives a detailed account of the inspection results and our firm's recommendations on control options to be implemented to bring the facility in compliance with the Province of Saskatchewan Occupational Health and Safety Act and Regulations. Bersch & Associates Ltd. conducted the survey in January 2015. A review of this report shall be conducted with all trades that are entering the facility to perform maintenance or renovation activity. This will ensure they are familiar with the types and locations of asbestos-containing materials present and prevent any uncontrolled disturbance and/or possible exposure to asbestos.

3.0 METHODOLOGY

Bersch & Associates Ltd. conducted the survey of the City Hall North located in Saskatoon, SK in January of 2015. The primary documents for guidance and criteria in this survey were the Province of Saskatchewan "Occupational Health and Safety Act and Regulations, 1996", Province of Saskatchewan "Managing Asbestos", and the U.S. Environmental Protection Agency "Guidance for Controlling Asbestos Containing Materials in Buildings". The USEPA document identifies factors associated with the "condition" and the "potential for disturbance or erosion" of asbestos containing materials (ACM). These factors help to determine potential for exposure to ACM and were used to make a qualitative evaluation of the material. It should be noted that the recommendation of "Management" Asbestos Abatement Action is based upon the premise that renovations are not scheduled in that area that will require disturbing or violating the asbestos containing material. In the event that renovations are scheduled that impact upon the areas of asbestos containing material then pre-removal of the asbestos containing materials may be necessary.

In total, twenty-one (21) bulk samples of suspect asbestos-containing materials were collected throughout the facility. Chrysotile asbestos was identified within one (1) of the samples collected. Refer to Appendix I for a copy of the Bulk Sample Analysis Report. All bulk samples collected were analyzed by Bersch & Associates Ltd. laboratory in accordance with the current USEPA 600/R-93/116 Method for the analysis of asbestos in building materials using polarized light microscopy and dispersion staining techniques. The detection limit of this method is listed as <1% by volume.

4.0 RECOMMENDATIONS:

Throughout the survey of the City Hall North the Asbestos Containing Materials were assessed and given a Priority Rating of One, Two or Three, with Priority One being the items requiring the most immediate attention. As a result, no “Priority One” items were identified within the facility. Refer to the recommendations provided in the attached **Asbestos Survey Database found in Appendix II.**

5.0 ASBESTOS ABATEMENT DISCUSSION

Asbestos is a known carcinogen and is listed in the Province of Saskatchewan under the Occupational Health and Safety Appendix, Part V as a Hazardous Chemical Substance and any release of asbestos fibres into the atmosphere creates a potential health hazard. Although the mechanism and epidemiology of asbestos carcinogenesis is not yet well defined, accumulating evidence suggests the significance of exposure at even very low fibre concentrations and hence human exposure should be kept to a minimum. It should be noted however that asbestos is a natural mineral and a measurable background concentration can be detected in any location sampled (inside buildings, outside buildings, urban, rural, etc.). The recommendations of the report are therefore intended to keep the potential exposure to an absolute minimum with the knowledge that a zero exposure is not possible.

Asbestos containing materials have been used in a wide variety of applications. Of particular concern, is the group of so called friable products. A friable product is one that can be crumbled or reduced to powder or smaller fragments by hand pressure. Publications from the U.S.E.P.A. as early as 1977 have indicated the potential hazard of asbestos exposure in buildings containing these friable products. The two main uses of friable asbestos products are as spray insulation (thermal, acoustic or fireproofing) on deck and/or beams or as thermal insulation on piping or mechanical equipment. A large amount of non-friable asbestos-containing materials have also been used in building construction such as asbestos cement board and asbestos containing vinyl flooring.

The mere presence of a friable asbestos containing material does not imply that there is an actual presence of elevated airborne fibre. As numerous studies have indicated, elevated asbestos fibre levels are generally found when settled dust or the actual asbestos containing material itself is disturbed by maintenance, renovation, inadvertent contact or vibration. The factors considered in the Environmental Protection Agency (USEPA) exposure assessment (condition of material, water damage, activity, movement, exposed surface area, accessibility, friability and presence in an air stream) often give some indication of the likelihood of fibre release but are not in any way definitive in determining whether a hazard exists or not. That is, even if the most friable product exists in a building, elevated fibre levels will not likely occur unless there is some disturbance by physical contact, vibration or an air stream.

There are four possible approaches to control exposure to airborne asbestos once a friable material is identified in a building. These methods briefly are as follows:

- A) Removal** - Asbestos material is removed and disposed of by burial and replaced by non-asbestos materials.
- B) Encapsulation** - Asbestos material is coated with a bridging or penetrating sealant.
- C) Enclosure** - Asbestos containing materials are separated from the building environment by barriers such as suspended ceilings or cladding materials.
- D) Deferred Action or Management and Custodial Control** - The Province of Saskatchewan Human Resources, Labor and Employment Branch under the Occupational health and Safety Regulations publish a document outlining “The Management of Asbestos”. In the guide for compliance, an action plan is outlined for management of the asbestos materials identified and in summary is:
 - 1. Identification, which has been accomplished by this report.
 - 2. Development of Written Handling Procedures for maintenance personnel or often arrangements are made for a qualified contractor to conduct the necessary removal or spot maintenance prior to the regular staff conducting maintenance.
 - 3. Asbestos Abatement Awareness and Process Training if the regular maintenance personnel are required to conduct asbestos related activities.
 - 4. Inspection on regular basis is conducted to determine the ongoing condition of the material. Sask. Occupational Health & Safety Regulations require an “annual” inspection of all “friable” asbestos materials by a competent person.

In the event renovations or maintenance is performed within areas containing asbestos materials, written procedures must be developed to conduct the activity or prior removal if the situation warrants.

6.0 REFERENCES

- .1 Province of Saskatchewan "The Occupational Health and Safety Act and The Occupational Health and Safety Regulations" Office Consolidation, January 1996.
- .2 Province of Saskatchewan Human Resources, Labor, and Employment "The Management of Asbestos" January, 1991.
- .3 USEPA, 1985. U.S. Environmental Protection Agency, "Guidance for Controlling Asbestos-Containing Materials in Buildings". Washington, DC: Office of Toxic Substances, USEPA.
- .4 Midwest Centre for Occupational Health & Safety St. Paul's, Minnesota – Asbestos Training For Inspectors & Management Planners
- .5 McCrone Research Institute Course Hayward California " Asbestos Identification"
- .6 Environment Management and Protection Act, Saskatchewan Environment, October 2002
- .7 Hazardous Substances and waste Dangerous Goods Regulations, Saskatchewan Environment, April 1989

APPENDIX I

BULK SAMPLE ANALYSIS REPORT

BERSCH & ASSOCIATES LTD.

January 16, 2015

City Of Saskatoon
Infrastructure Services Department
3130 Laurier Drive
Saskatoon, Sk.
S7L 5J7

ATTENTION: Brent Anderson

SUBJECT: Bulk Sample Analysis Report

Please find attached the laboratory results for the bulk analysis of the samples collected throughout the City Hall North located at 222 3rd Avenue North in Saskatoon, SK. The samples were analyzed in our laboratory for the identification of asbestos.

The results for the bulk samples were obtained by examination in accordance with the current USEPA 600/R-93/116 Method for the analysis of asbestos in building materials using polarized light microscopy and dispersion staining techniques. The detection limit of this method is listed as less than 1% by volume.

This test report relates only to the materials sent for examination and any use or extension of the information by the client of these results is the responsibility of the client. If any questions arise on the results of the attached information please contact me at 306 222 7477. Thank you for this opportunity of service!

Sincerely,

Brad Berschiminsky
Bersch & Associates Ltd.
File: B67BLA16

Bersch & Associates Ltd.

B67BAA16

Box 3568

Humboldt, Sask. S0K 2A0

BULK SAMPLE ANALYSIS REPORT**PROJECT NO. B67.15****CLIENT: City of Saskatoon****Infrastructure Services- Facilities Branch****Contact: Brent Anderson****Location: City Hall- 222 3rd Avenue North, Saskatoon, SK.**

NO.	DATE	SAMPLE INFORMATION	ASBESTOS	%	ANALYST
1	16-Jan-15	Basement Chiller Room - Large Pipeline Fitting On Yellow Steam Line Adjacent Wet Wall	None Detected		WB
2	16-Jan-15	Basement Chiller Room - Small Green WHWR Fitting Adjacent South Entry	None Detected		WB
3	16-Jan-15	Basement Chiller Room - Large Pipeline Fitting On Green CHS Line Adjacent Fan F-1	None Detected		WB
4	16-Jan-15	Basement Chiller Room - Medium Pipeline Fitting On Red "F" Line Adjacent Breaker Box In Northeast Corner	None Detected		WB
5	21-Jan-15	Area #209 - Spray On Fire-Proofing	None Detected		WB
6	21-Jan-15	Corridor #200/4 - Lineal Pipe Insulation Above Ceiling Tile Adjacent Girls Washroom	None Detected		WB
7	21-Jan-15	Area #301 - Duct Insulation On Large Silver Duct Above Ceiling Tile	None Detected		WB

Bersch & Associates Ltd.

B67BAA16

Box 3568

Humboldt, Sask. S0K 2A0

BULK SAMPLE ANALYSIS REPORT**PROJECT NO. B67.15****CLIENT: City of Saskatoon****Infrastructure Services- Facilities Branch****Contact: Brent Anderson****Location: City Hall- 222 3rd Avenue North, Saskatoon, SK.**

NO.	DATE	SAMPLE INFORMATION	ASBESTOS	%	ANALYST
8	22-Jan-15	Basement Corridor - Medium Pipeline Fittings On HWS Line At Rear Of Elevator	None Detected		WB
9	22-Jan-15	Basement Corridor - Small Pipeline Fitting On DHW Line At Rear Of Elevator	None Detected		WB
10	22-Jan-15	Basement Corridor - Small Pipeline Fitting On DCW Line At Rear Of Elevator	None Detected		WB
11	22-Jan-15	Parkade - Small Pipeline Fitting On DCW Line Near Basement Entry	None Detected		WB
12	22-Jan-15	Parkade - Small Pipeline Fitting On DHW Line Near Basement Entry	None Detected		WB
13	22-Jan-15	Parkade - Lineal Pipe Insulation On DHW Line Near Basement Entry	None Detected		WB
14	22-Jan-15	Parkade - Medium Pipeline Fitting Adjacent Unit Heater In Centre of Parkade	None Detected		WB

Bersch & Associates Ltd.

B67BAA16

Box 3568

Humboldt, Sask. S0K 2A0

BULK SAMPLE ANALYSIS REPORT**PROJECT NO. B67.15****CLIENT: City of Saskatoon****Infrastructure Services- Facilities Branch****Contact: Brent Anderson****Location: City Hall- 222 3rd Avenue North, Saskatoon, SK.**

NO.	DATE	SAMPLE INFORMATION	ASBESTOS	%	ANALYST
15	22-Jan-15	Parkade - Medium Pipeline Fitting Adjacent Unit Heater Adjacent Garage Door	None Detected		WB
16	22-Jan-15	Parkade - LPS Pipeline Fitting In Southwest Corner	None Detected		WB
17	22-Jan-15	Parkade - Pipeline Fitting On PC Line In Southwest Corner	None Detected		WB
18	22-Jan-15	Parkade - CHWR Pipeline Fitting In Southwest Corner	None Detected		WB
19	22-Jan-15	Parkade - CHWS Pipeline Fitting In Southwest Corner	None Detected		WB
20	22-Jan-15	Room #324 - Fire Stop Material At Floor Penetrations	None Detected		WB
21	22-Jan-15	Room #324 - 1' x 1' Floor Tile Brown With Brown & White Spec Pattern	Chrysotile	1 to 5	WB

APPENDIX II

ASBESTOS SURVEY DATABASE

City Hall North															
			SAMPLE DATA												
Floor	Room Number	Use	SAMPLE SAMPLE REP	Sample ID	Date DD/MM/YY	Asbestos Type	% of Asbestos	Tradename ACM Product	Condition	Priority	Description of Sample Location	Asbestos Content In Area	Potential for Disturbance	Action	Comments
B	B01	Storage										No Accessible ACM			
B	B02	Trades Office/Lunch Room										No Accessible ACM			
B	B03											No Accessible ACM			
B	B04	Parkade	Sample	B15-ASB.11	22-Jan-15	None Detected		Pipeline Fitting Compound			Parkade - Small Pipeline Fitting On DCW Line Near Basement	No Accessible ACM			
B	B04	Parkade	Sample	B15-ASB.12	22-Jan-15	None Detected		Pipeline Fitting Compound			Parkade - Small Pipeline Fitting On DHW Line Near Basement	No Accessible ACM			
B	B04	Parkade	Sample	B15-ASB.13	22-Jan-15	None Detected		Pipeline Fitting Compound			Parkade - Lineal Pipe Insulation On DHW Line Near Basement	No Accessible ACM			
B	B04	Parkade	Sample	B15-ASB.14	22-Jan-15	None Detected		Pipeline Fitting Compound			Parkade - Medium Pipeline Fitting Adjacent Unit Heater(Centre of Parkade)	No Accessible ACM			
B	B04	Parkade	Sample	B15-ASB.15	22-Jan-15	None Detected		Pipeline Fitting Compound			Parkade - Medium Pipeline Fitting Adjacent Unit Heater Adjacent Garage Door	No Accessible ACM			
B	B04	Parkade	Sample	B15-ASB.16	22-Jan-15	None Detected		Pipeline Fitting Compound			Parkade - LPS Pipeline Fitting In South West Corner	No Accessible ACM			
B	B04	Parkade	Sample	B15-ASB.17	22-Jan-15	None Detected		Pipeline Fitting Compound			Parkade - Pipeline Fitting In South West Corner	No Accessible ACM			
B	B04	Parkade	Sample	B15-ASB.18	22-Jan-15	None Detected		Pipeline Fitting Compound			Parkade - CHWR Pipeline Fitting In South West Corner	No Accessible ACM			
B	B04	Parkade	Sample	B15-ASB.19	22-Jan-15	None Detected		Pipeline Fitting Compound			Parkade - CHWS Pipeline Fitting In South West Corner	No Accessible ACM			
B	B05	Chiller Room	Sample	B15-ASB.1	16-Jan-15	None Detected		Pipeline Fitting Compound			Basement Chiller Room - Large Pipeline Fitting On Yellow Steam Line Adjacent Wet Wall	No Accessible ACM			
B	B05	Chiller Room	Sample	B15-ASB.2	16-Jan-15	None Detected		Pipeline Fitting Compound			Basement Chiller Room - Small Green WHWR Fitting Adjacent South Entry	No Accessible ACM			
B	B05	Chiller Room	Sample	B15-ASB.3	16-Jan-15	None Detected		Pipeline Fitting Compound			Basement Chiller Room - Large Pipeline Fitting On Green CHS Line Adjacent Fan F-1	No Accessible ACM			
B	B05	Chiller Room	Sample	B15-ASB.4	16-Jan-15	None Detected		Pipeline Fitting Compound			Basement Chiller Room - Medium Pipeline Fitting On Red "F" Line Adjacent Breaker Box In North East Corner	No Accessible ACM			
B	B06											No Accessible ACM			
B	BS2	Stairwell										No Accessible ACM			
B	E-1	Elevator										No Accessible ACM			

City Hall North															
			SAMPLE DATA												
Floor	Room Number	Use	SAMPLE SAMPLE REP	Sample ID	Date DD/MM/YY	Asbestos Type	% of Asbestos	Tradename ACM Product	Condition	Priority	Description of Sample Location	Asbestos Content In Area	Potential for Disturbance	Action	Comments
B	B07	Main Electrical Service Ramp Room Storage										No Accessible ACM			
B	B08											No Accessible ACM			
B	B09											No Accessible ACM			
B	B09A											No Accessible ACM			
B	B09B											No Accessible ACM			
B	B10											No Accessible ACM			
B	BS1	Stairwell										No Accessible ACM			
B	B11											No Accessible ACM			
B	B12											No Accessible ACM			
B	B13	Ramp Up										No Accessible ACM			
B	B14	Corridor	Sample	B15-ASB.8	22-Jan-15	None Detected		Pipeline Fitting Compound			Basement Corridor - Medium Pipeline Fittings On HWS At Rear Of Elevator	No Accessible ACM			
B	B14	Corridor	Sample	B15-ASB.9	22-Jan-15	None Detected		Pipeline Fitting Compound			Basement Corridor - Small Pipeline Fitting On DHW At Rear Of Elevator	No Accessible ACM			
B	B14	Corridor	Sample	B15-ASB.10	22-Jan-15	None Detected		Pipeline Fitting Compound			Basement Corridor - Small Pipeline Fitting On DHW At Rear Of Elevator	No Accessible ACM			
B	BS3	Stairwell										No Accessible ACM			
M	100A	Vestibule										No Accessible ACM			
M	100B											No Accessible ACM			
M	100C	Landing										No Accessible ACM			
M	S-3	Stairwell										No Accessible ACM			
M	101	Lobby										No Accessible ACM			
M	102	Information Desk										No Accessible ACM			
M	103	Vestibule	Sample Rep	B15-ASB.21	22-Jan-15	Chrysotile	1-5%	Vinyl Asbestos Tile	Good	3	Room #324 - 1' x 1' Floor Tile Brown With Brown & White Spec Pattern	Vinyl Asbestos Tile	Low	Manage	
M	104	Security Desk										No Accessible ACM			
M	105	Council Chambers										No Accessible ACM			
M	106											No Accessible ACM			
M	107											No Accessible ACM			
M	108	Area Behind Chambers										No Accessible ACM			
M	109	Area Behind Chambers										No Accessible ACM			
M	110	Area Behind Chambers										No Accessible ACM			
M	111	Area Behind Chambers										No Accessible ACM			
M	112	Area Behind Chambers										No Accessible ACM			
M	S-1	Stairwell										No Accessible ACM			
M	113/1A											No Accessible ACM			
M	113/1B											No Accessible ACM			
M	113/1C											No Accessible ACM			
M	113/1D											No Accessible ACM			
M	113/1E											No Accessible ACM			

City Hall North															
			SAMPLE DATA												
Floor	Room Number	Use	SAMPLE SAMPLE REP	Sample ID	Date DD/MM/YY	Asbestos Type	% of Asbestos	Tradename ACM Product	Condition	Priority	Description of Sample Location	Asbestos Content In Area	Potential for Disturbance	Action	Comments
M	113/1F											No Accessible ACM			
M	113/1G											No Accessible ACM			
M	113/1H											No Accessible ACM			
M	113/2A											No Accessible ACM			
M	113/2B											No Accessible ACM			
M	113/2C											No Accessible ACM			
M	113/2D											No Accessible ACM			
M	113/2E											No Accessible ACM			
M	113/3A	Collections										No Accessible ACM			
M	113/3B	Collections										No Accessible ACM			
M	113/3C	Collections										No Accessible ACM			
M	113/3D	Collections										No Accessible ACM			
M	113/3E	Collections										No Accessible ACM			
M	113/3F	Collections										No Accessible ACM			
M	113/3G	Collections										No Accessible ACM			
M	113/3H	Collections										No Accessible ACM			
M	113/4A	Office										No Accessible ACM			
M	113/4B	Office										No Accessible ACM			
M	113/4C	Office										No Accessible ACM			
M	113/4D	Office										No Accessible ACM			
M	113/4E	Office										No Accessible ACM			
M	113/4F	Office										No Accessible ACM			
M	113/4G	Office										No Accessible ACM			
M	113/4H	Office										No Accessible ACM			
M	113/4J	Corridor										No Accessible ACM			
M	113/5A	Office										No Accessible ACM			
M	113/5A	Office										No Accessible ACM			
M	113/5B	Office										No Accessible ACM			
M	113/5C	Office										No Accessible ACM			
M	113/5D	Office										No Accessible ACM			
M	113/5E	Corridor										No Accessible ACM			
M	113/5F	Office										No Accessible ACM			
M	113/5G	Office										No Accessible ACM			
M	113/6A											No Accessible ACM			
M	113/6B	Corridor										No Accessible ACM			
M	113/6C											No Accessible ACM			
M	113/6D	Office										No Accessible ACM			
M	113/6E											No Accessible ACM			
M	113/7A	Office										No Accessible ACM			
M	113/7B	Office										No Accessible ACM			
M	113/7C	Office										No Accessible ACM			
M	113/7D	Office										No Accessible ACM			
M	113/7E	Office										No Accessible ACM			
M	113/7F	Office										No Accessible ACM			
M	113/7G	Office										No Accessible ACM			
M	113/7H	Office										No Accessible ACM			
M	113/7I	Office										No Accessible ACM			
M	113/7J	Office										No Accessible ACM			
M	113/8A	Office										No Accessible ACM			
M	113/8B	Office										No Accessible ACM			
M	113/8C	Office										No Accessible ACM			
M	113/8D	Office										No Accessible ACM			

City Hall North															
			SAMPLE DATA												
Floor	Room Number	Use	SAMPLE SAMPLE REP	Sample ID	Date DD/MM/YY	Asbestos Type	% of Asbestos	Tradenname ACM Product	Condition	Priority	Description of Sample Location	Asbestos Content In Area	Potential for Disturbance	Action	Comments
M	113/9A	Office										No Accessible ACM			
M	113/9B	Office										No Accessible ACM			
M	113/9C	Office										No Accessible ACM			
M	113/9D	Office										No Accessible ACM			
M	113/9E	Office										No Accessible ACM			
M	113/9F	Office										No Accessible ACM			
M	114A											No Accessible ACM			
M	114B											No Accessible ACM			
M	115	Office										No Accessible ACM			
M	116	Office										No Accessible ACM			
M	117	Office										No Accessible ACM			
M	118	Office										No Accessible ACM			
M	119	Office										No Accessible ACM			
M	120	Office										No Accessible ACM			
M	121	Office										No Accessible ACM			
M	122	Office										No Accessible ACM			
M	123	Office										No Accessible ACM			
M	124	Office										No Accessible ACM			
M	125	Office										No Accessible ACM			
M	126	Office										No Accessible ACM			
M	127/1A											No Accessible ACM			
M	127/1B											No Accessible ACM			
M	127/1C											No Accessible ACM			
M	127/1D	Corridor										No Accessible ACM			
M	127/1E											No Accessible ACM			
M	127/1F											No Accessible ACM			
M	127/2A											No Accessible ACM			
M	127/2B											No Accessible ACM			
M	127/2C											No Accessible ACM			
M	127/2D											No Accessible ACM			
M	127/2E											No Accessible ACM			
M	127/2F	Office										No Accessible ACM			
M	127/2G	Office										No Accessible ACM			
M	127/3A	Office										No Accessible ACM			
M	127/3B	Office										No Accessible ACM			
M	127/4A	Office										No Accessible ACM			
M	127/4B	Office										No Accessible ACM			
M	127/4C	Office										No Accessible ACM			
M	128/1A	Office										No Accessible ACM			
M	128/1B											No Accessible ACM			
M	128/1C	Office										No Accessible ACM			
M	128/1D	Office										No Accessible ACM			
M	128/1E	Corridor										No Accessible ACM			
M	128/2A											No Accessible ACM			
M	128/2B	Office										No Accessible ACM			
M	128/2C	Office										No Accessible ACM			
M	128/2D	Office										No Accessible ACM			
M	128/2E	Office										No Accessible ACM			
M	129	Office										No Accessible ACM			
M	130											No Accessible ACM			
M	131	Bathroom										No Accessible ACM			
M	132	Bathroom										No Accessible ACM			

City Hall North															
			SAMPLE DATA												
Floor	Room Number	Use	SAMPLE SAMPLE REP	Sample ID	Date DD/MM/YY	Asbestos Type	% of Asbestos	Tradename ACM Product	Condition	Priority	Description of Sample Location	Asbestos Content In Area	Potential for Disturbance	Action	Comments
M	133	Bathroom										No Accessible ACM			
M	134	Bathroom										No Accessible ACM			
M	135	Corridor										No Accessible ACM			
M	136	Vestibule										No Accessible ACM			
M	E-1	Elevator										No Accessible ACM			
M	138		Sample Rep	B15-ASB.21	22-Jan-15	Chrysotile	1-5%	Vinyl Asbestos Tile	Good	3	Room #324 - 1' x 1' Floor Tile Brown With Brown & White Spec Pattern	Vinyl Asbestos Tile	Low	Manage	
M	139		Sample Rep	B15-ASB.21	22-Jan-15	Chrysotile	1-5%	Vinyl Asbestos Tile	Good	3	Room #324 - 1' x 1' Floor Tile Brown With Brown & White Spec Pattern	Vinyl Asbestos Tile	Low	Manage	
M	140											No Accessible ACM			
M	S-2	Stairwell										No Accessible ACM			
M	141											No Accessible ACM			
M	142	Storage										No Accessible ACM			
M	143	Corridor										No Accessible ACM			
M	144	Corridor										No Accessible ACM			
M	145	Corridor										No Accessible ACM			
M	146	Corridor										No Accessible ACM			
2	200/1	2nd Floor North Hallway										No Accessible ACM			
2	200/2											No Accessible ACM			
2	200/2A											No Accessible ACM			
2	200/3	Corridor										No Accessible ACM			
2	200/4	Vestibule	Sample	B15-ASB.6	21-Jan-15	None Detected		Lineal Pipe Insulation			Room # 2nd Floor Corridor - Lineal Pipe Insulation Above Ceiling Tile Adjacent Girls Washroom	No Accessible ACM			
2	201											No Accessible ACM			
2	201B											No Accessible ACM			
2	202	Corridor										No Accessible ACM			
2	202B	Office										No Accessible ACM			
2	203											No Accessible ACM			
2	204											No Accessible ACM			
2	205	Bathroom										No Accessible ACM			
2	206											No Accessible ACM			
2	207											No Accessible ACM			
2	208											No Accessible ACM			
2	209/1A		Sample	B15-ASB.5	21-Jan-15	None Detected		Fireproofing			Area #209 - Spray On Fire-Proofing	No Accessible ACM			
2	209/1B											No Accessible ACM			
2	209/1C											No Accessible ACM			
2	209/1D											No Accessible ACM			
2	209/1E											No Accessible ACM			
2	210	Office	Sample Rep	B15-ASB.21	22-Jan-15	Chrysotile	1-5%	Vinyl Asbestos Tile	Good	3	Room #324 - 1' x 1' Floor Tile Brown With Brown & White Spec Pattern	Vinyl Asbestos Tile	Low	Manage	
2	211	Office										No Accessible ACM			
2	212											No Accessible ACM			
2	213											No Accessible ACM			
2	214											No Accessible ACM			
2	215	Storage										No Accessible ACM			

City Hall North															
			SAMPLE DATA												
Floor	Room Number	Use	SAMPLE SAMPLE REP	Sample ID	Date DD/MM/YY	Asbestos Type	% of Asbestos	Tradename ACM Product	Condition	Priority	Description of Sample Location	Asbestos Content In Area	Potential for Disturbance	Action	Comments
2	216	Bathroom										No Accessible ACM			
2	217	Bathroom										No Accessible ACM			
2	S-1	Stairwell										No Accessible ACM			
2	218/1A	Office										No Accessible ACM			
2	218/1B	Office										No Accessible ACM			
2	218/1C	Office										No Accessible ACM			
2	219/1A											No Accessible ACM			
2	219/1B											No Accessible ACM			
2	219/1C											No Accessible ACM			
2	220	Admin Hallway										No Accessible ACM			
2	221											No Accessible ACM			
2	222											No Accessible ACM			
2	223											No Accessible ACM			
2	224/1A											No Accessible ACM			
2	224/1B											No Accessible ACM			
2	225											No Accessible ACM			
2	225/1A											No Accessible ACM			
2	225/1B											No Accessible ACM			
2	225/1C											No Accessible ACM			
2	225/1D											No Accessible ACM			
2	225/2A											No Accessible ACM			
2	225/2B											No Accessible ACM			
2	225/2C											No Accessible ACM			
2	225/2D											No Accessible ACM			
2	225/E											No Accessible ACM			
2	226	Corridor										No Accessible ACM			
2	227											No Accessible ACM			
2	228	Flex Area										No Accessible ACM			
2	229A		Sample Rep	B15-ASB.21	22-Jan-15	Chrysotile	1-5%	Vinyl Asbestos Tile	Good	3	Room #324 - 1' x 1' Floor Tile Brown With Brown & White Spec Pattern	Vinyl Asbestos Tile	Low	Manage	
2	229B		Sample Rep	B15-ASB.21	22-Jan-15	Chrysotile	1-5%	Vinyl Asbestos Tile	Good	3	Room #324 - 1' x 1' Floor Tile Brown With Brown & White Spec Pattern	Vinyl Asbestos Tile	Low	Manage	
2	230	Flex Area										No Accessible ACM			
2	231	Committee Room 'A'										No Accessible ACM			
2	232A	Communications										No Accessible ACM			
2	232B	Communications										No Accessible ACM			
2	232C	Communications										No Accessible ACM			
2	233											No Accessible ACM			
2	235	Committee Room 'B'										No Accessible ACM			
2	236/1A	Closet										No Accessible ACM			
2	236/1B											No Accessible ACM			
2	236/1C											No Accessible ACM			
2	237											No Accessible ACM			
2	238/1A											No Accessible ACM			
2	238/1B											No Accessible ACM			
2	238/1C											No Accessible ACM			
2	238/1D											No Accessible ACM			
2	238/1E											No Accessible ACM			

City Hall North															
			SAMPLE DATA												
Floor	Room Number	Use	SAMPLE SAMPLE REP	Sample ID	Date DD/MM/YY	Asbestos Type	% of Asbestos	Tradename ACM Product	Condition	Priority	Description of Sample Location	Asbestos Content In Area	Potential for Disturbance	Action	Comments
2	238/1F											No Accessible ACM			
2	239/1A											No Accessible ACM			
2	239/1B											No Accessible ACM			
2	239/2A											No Accessible ACM			
2	239/2B											No Accessible ACM			
2	239/2C	Office										No Accessible ACM			
2	239/2D	Office										No Accessible ACM			
2	240	Office										No Accessible ACM			
2	241	Office										No Accessible ACM			
2	242	Office										No Accessible ACM			
2	243	Office										No Accessible ACM			
2	244	Office										No Accessible ACM			
2	245	Office										No Accessible ACM			
2	246	Office										No Accessible ACM			
2	247	Office										No Accessible ACM			
2	248	Office										No Accessible ACM			
2	249	Office										No Accessible ACM			
2	250/1A	Library										No Accessible ACM			
2	250/1B											No Accessible ACM			
2	250/1C											No Accessible ACM			
2	251	Closet										No Accessible ACM			
2	252	Storage	Sample Rep	B15-ASB.21	22-Jan-15	Chrysotile	1-5%	Vinyl Asbestos Tile	Good	3	Room #324 - 1' x 1' Floor Tile Brown With Brown & White Spec Pattern	Vinyl Asbestos Tile	Low	Manage	
2	253	Bathroom										No Accessible ACM			
2	254	Bathroom										No Accessible ACM			
2	255	Bathroom										No Accessible ACM			
2	256	Bathroom										No Accessible ACM			
2	257	Storage										No Accessible ACM			
2	258/1A	Office										No Accessible ACM			
2	258/1B	Office										No Accessible ACM			
2	258/1C	Office										No Accessible ACM			
2	258/1D	Office										No Accessible ACM			
2	258/2A	Office										No Accessible ACM			
2	258/2B	Office										No Accessible ACM			
2	258/2C	Office										No Accessible ACM			
2	259	Office										No Accessible ACM			
2	260	Office										No Accessible ACM			
2	261	Office										No Accessible ACM			
2	262	Office										No Accessible ACM			
2	263	Office										No Accessible ACM			
2	265	Office	Sample Rep	B15-ASB.21	22-Jan-15	Chrysotile	1-5%	Vinyl Asbestos Tile	Good	3	Room #324 - 1' x 1' Floor Tile Brown With Brown & White Spec Pattern	Vinyl Asbestos Tile	Low	Manage	
2	266	Office	Sample Rep	B15-ASB.21	22-Jan-15	Chrysotile	1-5%	Vinyl Asbestos Tile	Good	3	Room #324 - 1' x 1' Floor Tile Brown With Brown & White Spec Pattern	Vinyl Asbestos Tile	Low	Manage	
2	267	Office										No Accessible ACM			
2	S-2	Stairwell										No Accessible ACM			
2	268											No Accessible ACM			
2	E-1	Elevator										No Accessible ACM			
2	270	Office										No Accessible ACM			

City Hall North															
			SAMPLE DATA												
	Room	Use	SAMPLE	Sample	Date	Asbestos	% of	Tradename			Description of	Asbestos Content	Potential for		
Floor	Number		SAMPLE REP	ID	DD/MM/YY	Type	Asbestos	ACM Product	Condition	Priority	Sample Location	In Area	Disturbance	Action	Comments
2	271	Office										No Accessible ACM			
3	300/1A	3rd Floor North Hallway										No Accessible ACM			
3	300/1B	Corridor										No Accessible ACM			
3	301/1A	Office	Sample	B15-ASB.7	21-Jan-15	None Detected		Duct Insulation			Infrastructure Services - Duct Insulation On Large Silver Duct Above Ceiling Tile	No Accessible ACM			
3	301/1B	Office										No Accessible ACM			
3	301/1C	Office										No Accessible ACM			
3	301/1D	Office										No Accessible ACM			
3	301/1E	Office										No Accessible ACM			
3	301/1F	Corridor										No Accessible ACM			
3	301/2A	Office										No Accessible ACM			
3	301/2B	Office										No Accessible ACM			
3	301/2C	Office										No Accessible ACM			
3	301/2D	Office										No Accessible ACM			
3	301/2E	Office										No Accessible ACM			
3	301/2F	Office										No Accessible ACM			
3	301/2G	Office										No Accessible ACM			
3	301/2H	Office										No Accessible ACM			
3	301/3A	Office										No Accessible ACM			
3	301/3B	Office										No Accessible ACM			
3	301/3C	Corridor										No Accessible ACM			
3	301/3D	Office										No Accessible ACM			
3	301/3E	Corridor										No Accessible ACM			
3	301/4A	Office										No Accessible ACM			
3	301/4B	Corridor										No Accessible ACM			
3	301/4C	Office										No Accessible ACM			
3	301/4D	Office										No Accessible ACM			
3	301/4E											No Accessible ACM			
3	301/4F											No Accessible ACM			
3	301/4G	Office										No Accessible ACM			
3	301/5A	Office										No Accessible ACM			
3	301/5B	Office										No Accessible ACM			
3	301/5C	Office										No Accessible ACM			
3	301/5D	Office										No Accessible ACM			
3	301/5E	Office										No Accessible ACM			
3	301/5F											No Accessible ACM			
3	301/5G	Office										No Accessible ACM			
3	301/5H	Office										No Accessible ACM			
3	301/6A	Office										No Accessible ACM			
3	301/6B	Office										No Accessible ACM			
3	301/6C	Office										No Accessible ACM			
3	301/6D	Office										No Accessible ACM			
3	301/6E	Office										No Accessible ACM			
3	301/6F	Office										No Accessible ACM			
3	301/6G	Office										No Accessible ACM			
3	301/6H	Office										No Accessible ACM			
3	301/6J	Corridor										No Accessible ACM			
3	301/7A	Office										No Accessible ACM			
3	301/7B	Office										No Accessible ACM			
3	301/7C	Office										No Accessible ACM			

City Hall North															
			SAMPLE DATA												
Floor	Room Number	Use	SAMPLE SAMPLE REP	Sample ID	Date DD/MM/YY	Asbestos Type	% of Asbestos	Tradename ACM Product	Condition	Priority	Description of Sample Location	Asbestos Content In Area	Potential for Disturbance	Action	Comments
3	301/7D	Office										No Accessible ACM			
3	301/8A	Office										No Accessible ACM			
3	301/8B	Office										No Accessible ACM			
3	301/8C	Office										No Accessible ACM			
3	301/9A	Office										No Accessible ACM			
3	301/9B	Office										No Accessible ACM			
3	301/9C	Office										No Accessible ACM			
3	301/9D	Corridor										No Accessible ACM			
3	301/9E	Office										No Accessible ACM			
3	302/1A	Office										No Accessible ACM			
3	302/1B	Office										No Accessible ACM			
3	302/1C	Office										No Accessible ACM			
3	302/1D	Office										No Accessible ACM			
3	302/1E	Office										No Accessible ACM			
3	302/1F	Office										No Accessible ACM			
3	302/1G	Office										No Accessible ACM			
3	302/1H	Office										No Accessible ACM			
3	302/2A	Office										No Accessible ACM			
3	302/2B	Office										No Accessible ACM			
3	302/2C	Office										No Accessible ACM			
3	302/2D	Office										No Accessible ACM			
3	302/2E	Corridor										No Accessible ACM			
3	302/2F	Office										No Accessible ACM			
3	302/2G	Office										No Accessible ACM			
3	302/4A	Office										No Accessible ACM			
3	302/4B	Office										No Accessible ACM			
3	302/4C	Office										No Accessible ACM			
3	302/5A	Office										No Accessible ACM			
3	302/5B	Office										No Accessible ACM			
3	302/5C	Office										No Accessible ACM			
3	302/5D	Office										No Accessible ACM			
3	302/5E	Office										No Accessible ACM			
3	302/5G	Office										No Accessible ACM			
3	302/5H	Corridor										No Accessible ACM			
3	303											No Accessible ACM			
3	304											No Accessible ACM			
3	S-1	Stairwell										No Accessible ACM			
3	305	Office										No Accessible ACM			
3	306	Office										No Accessible ACM			
3	307	Office										No Accessible ACM			
3	306	Office										No Accessible ACM			
3	308	Office										No Accessible ACM			
3	309	Office										No Accessible ACM			
3	310	Office										No Accessible ACM			
3	311	Office										No Accessible ACM			
3	312	Office										No Accessible ACM			
3	313	Office										No Accessible ACM			
3	314	Office										No Accessible ACM			
3	315	Bathroom										No Accessible ACM			
3	316	Bathroom										No Accessible ACM			
3	317	Bathroom										No Accessible ACM			
3	318	Bathroom										No Accessible ACM			

City Hall North															
			SAMPLE DATA												
	Room		SAMPLE	Sample	Date	Asbestos	% of	Tradename			Description of	Asbestos Content	Potential for		
Floor	Number	Use	SAMPLE REP	ID	DD/MM/YY	Type	Asbestos	ACM Product	Condition	Priority	Sample Location	In Area	Disturbance	Action	Comments
3	319/1A											No Accessible ACM			
3	319/1B											No Accessible ACM			
3	319/1C											No Accessible ACM			
3	320											No Accessible ACM			
3	321											No Accessible ACM			
3	323		Sample Rep	B15-ASB.21	22-Jan-15	Chrysotile	1-5%	Vinyl Asbestos Tile	Good	3	Room #324 - 1' x 1' Floor Tile Brown With Brown & White Spec Pattern	Vinyl Asbestos Tile	Low	Manage	
3	324		Sample	B15-ASB.20	22-Jan-15	None Detected		Fire-Stop Material			Room #324 - Fire Stop Material At Floor Penetrations	No Accessible ACM			
3	324		Sample	B15-ASB.21	22-Jan-15	Chrysotile	1-5%	Vinyl Asbestos Tile	Good	3	Room #324 - 1' x 1' Floor Tile Brown With Brown & White Spec Pattern	Vinyl Asbestos Tile	Low	Manage	
3	325											No Accessible ACM			
3	S-2	Stairwell										No Accessible ACM			
3	326											No Accessible ACM			
3	E-1	Elevator										No Accessible ACM			
3	327											No Accessible ACM			
3	328											No Accessible ACM			
3	329	Storage										No Accessible ACM			
3	330											No Accessible ACM			

APPENDIX III

FLOOR PLANS

NOTE:
THESE DRAWINGS HAVE BEEN PREPARED
BASED ON INFORMATION PROVIDED BY
OTHERS. THE CITY HAS TAKEN STEPS
TO VERIFY THE ACCURACY AND/OR
COMPLETENESS OF THIS INFORMATION
BUT SHALL NOT BE RESPONSIBLE FOR
AND ERRORS OR OMISSIONS THAT
MAY BE INCORPORATED AS A RESULT
OF ERRONEOUS INFORMATION PROVIDED
BY OTHERS THAT WAS NOT ABLE TO BE
VISUALLY CONFIRMED.

- GENERAL NOTES:
1. ALL DIMENSIONS ARE IN MILLIMETRES
 2. DRAWINGS ARE NOT TO BE SCALED.
 3. ALL DRAWINGS TO BE READ IN CON-
JUNCTION WITH THE SPECIFICATIONS
UNLESS OTHERWISE NOTED.
 4. VERIFY SITE CONDITIONS, DIMENSIONS
AND LOCATION OF ALL UTILITIES PRIOR
TO THE START OF CONSTRUCTION.
 5. REPORT ALL DISCREPANCIES TO THE
CONSULTANT.

REV	ISSUED FOR	DATE

DESIGNED BY:	DRAWN BY:	CHECKED BY:	REQUESTED BY:
	MSB		

SCALE:	DATE:
1:250	22/11/2012

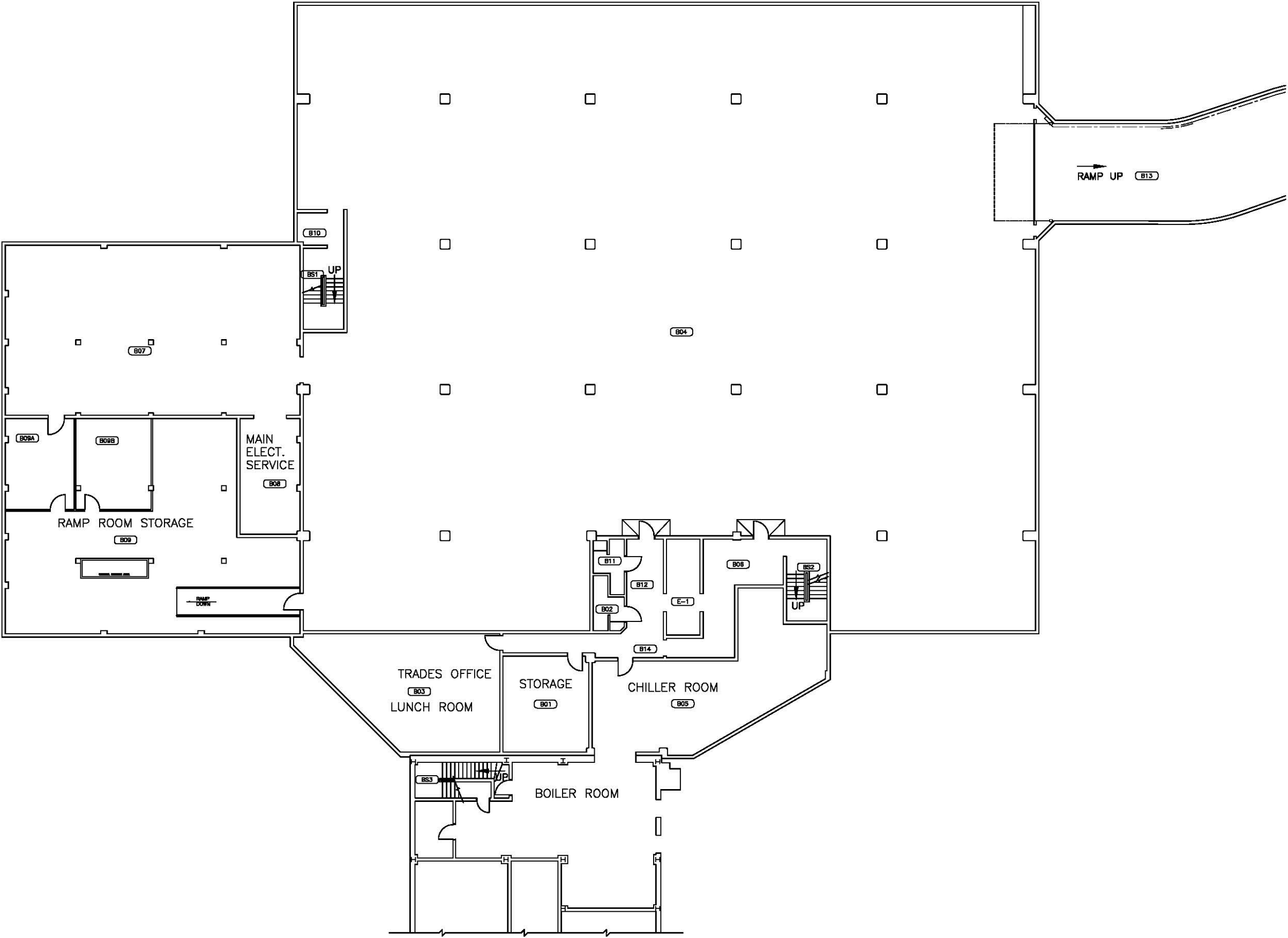
SHEET NAME	Asbuilt

Lower Floor
Base Plan

PROJECT TITLE
**851
City Hall
North**

PROJECT NO.	SHEET

REV. NO.	





City of
Saskatoon

Infrastructure Services
Department

Facilities Branch
306-975-3300

NOTE:
THESE DRAWINGS HAVE BEEN PREPARED
BASED ON INFORMATION PROVIDED BY
OTHERS. THE CITY HAS TAKEN STEPS
TO VERIFY THE ACCURACY AND/OR
COMPLETENESS OF THIS INFORMATION
BUT SHALL NOT BE RESPONSIBLE FOR
AND ERRORS OR OMISSIONS THAT
MAY BE INCORPORATED AS A RESULT
OF ERRONEOUS INFORMATION PROVIDED
BY OTHERS THAT WAS NOT ABLE TO BE
VISUALLY CONFIRMED.

GENERAL NOTES:

1. ALL DIMENSIONS ARE IN MILLIMETRES
2. DRAWINGS ARE NOT TO BE SCALED.
3. ALL DRAWINGS TO BE READ IN CON-
JUNCTION WITH THE SPECIFICATIONS
UNLESS OTHERWISE NOTED.
4. VERIFY SITE CONDITIONS, DIMENSIONS
AND LOCATION OF ALL UTILITIES PRIOR
TO THE START OF CONSTRUCTION.
5. REPORT ALL DISCREPANCIES TO THE
CONSULTANT.

REV ISSUED FOR DATE

DESIGNED BY: DRAWN BY: CHECKED BY: REQUESTED BY:
MSB

SCALE: 1:200 DATE: 21/11/2012

SHEET NAME: Asbuilt

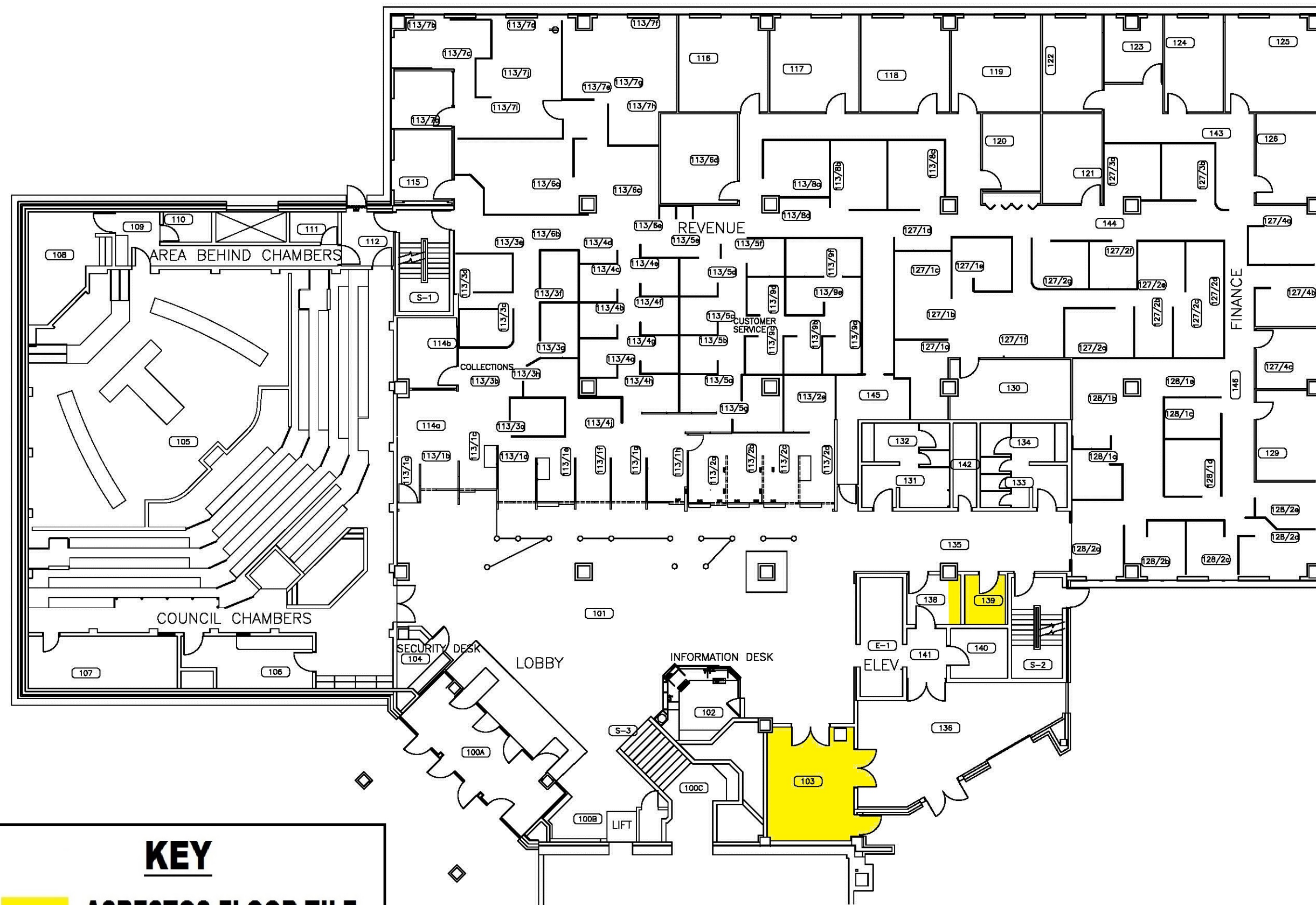
Main Floor
Base Plan

PROJECT TITLE
851
City Hall
North

PROJECT NO.

SHEET

REV. NO.



KEY

ASBESTOS FLOOR TILE

NOTE:
THESE DRAWINGS HAVE BEEN PREPARED
BASED ON INFORMATION PROVIDED BY
OTHERS. THE CITY HAS TAKEN STEPS
TO VERIFY THE ACCURACY AND/OR
COMPLETENESS OF THIS INFORMATION
BUT SHALL NOT BE RESPONSIBLE FOR
AND ERRORS OR OMISSIONS THAT
MAY BE INCORPORATED AS A RESULT
OF ERRONEOUS INFORMATION PROVIDED
BY OTHERS THAT WAS NOT ABLE TO BE
VISUALLY CONFIRMED.

GENERAL NOTES:
1. ALL DIMENSIONS ARE IN MILLIMETRES
2. DRAWINGS ARE NOT TO BE SCALED.
3. ALL DRAWINGS TO BE READ IN CON-
JUNCTION WITH THE SPECIFICATIONS
UNLESS OTHERWISE NOTED.
4. VERIFY SITE CONDITIONS, DIMENSIONS
AND LOCATION OF ALL UTILITIES PRIOR
TO THE START OF CONSTRUCTION.
5. REPORT ALL DISCREPANCIES TO THE
CONSULTANT.

REV. ISSUED FOR DATE

DESIGNED BY: DRAWN BY: CHECKED BY: REQUESTED BY:
MSB

SCALE: 1:200 DATE: 16/11/2012

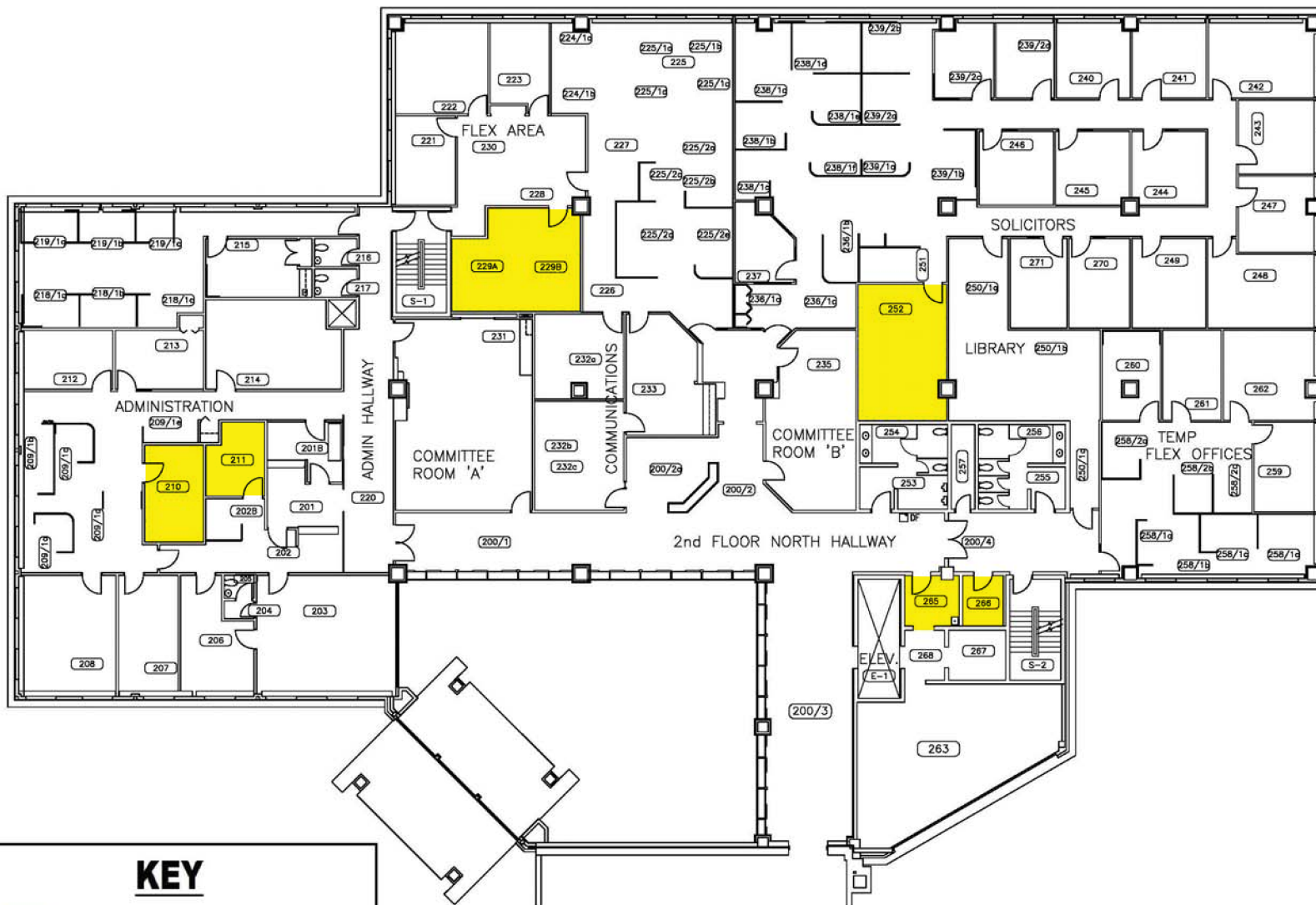
SHEET NAME: Asbuilt

Second Floor
Base Plan

PROJECT TITLE:
**851
City Hall North
North**

PROJECT NO. SHEET

REV. NO. 



NOTE:
THESE DRAWINGS HAVE BEEN PREPARED
BASED ON INFORMATION PROVIDED BY
OTHERS. THE CITY HAS TAKEN STEPS
TO VERIFY THE ACCURACY AND/OR
COMPLETENESS OF THIS INFORMATION
BUT SHALL NOT BE RESPONSIBLE FOR
AND ERRORS OR OMISSIONS THAT
MAY BE INCORPORATED AS A RESULT
OF ERRONEOUS INFORMATION PROVIDED
BY OTHERS THAT WAS NOT ABLE TO BE
VISUALLY CONFIRMED.

- GENERAL NOTES:
1. ALL DIMENSIONS ARE IN MILLIMETRES
 2. DRAWINGS ARE NOT TO BE SCALED.
 3. ALL DRAWINGS TO BE READ IN CON-
JUNCTION WITH THE SPECIFICATIONS
UNLESS OTHERWISE NOTED.
 4. VERIFY SITE CONDITIONS, DIMENSIONS
AND LOCATION OF ALL UTILITIES PRIOR
TO THE START OF CONSTRUCTION.
 5. REPORT ALL DISCREPANCIES TO THE
CONSULTANT.

REV ISSUED FOR DATE

DESIGNED BY: DRAWN BY: CHECKED BY: REQUESTED BY:
MSB

SCALE: 1:150 DATE: 15/11/2012

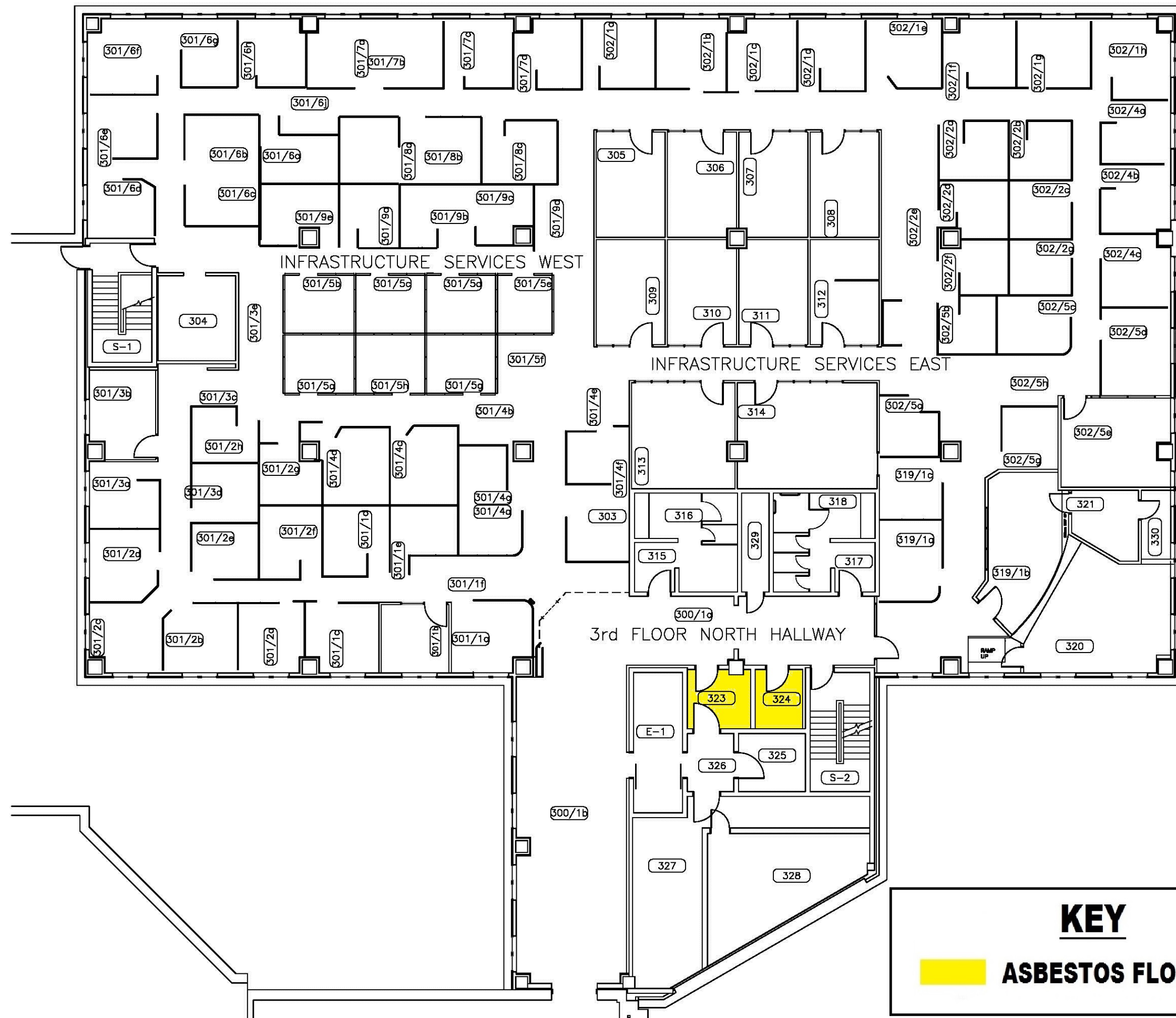
SHEET NAME

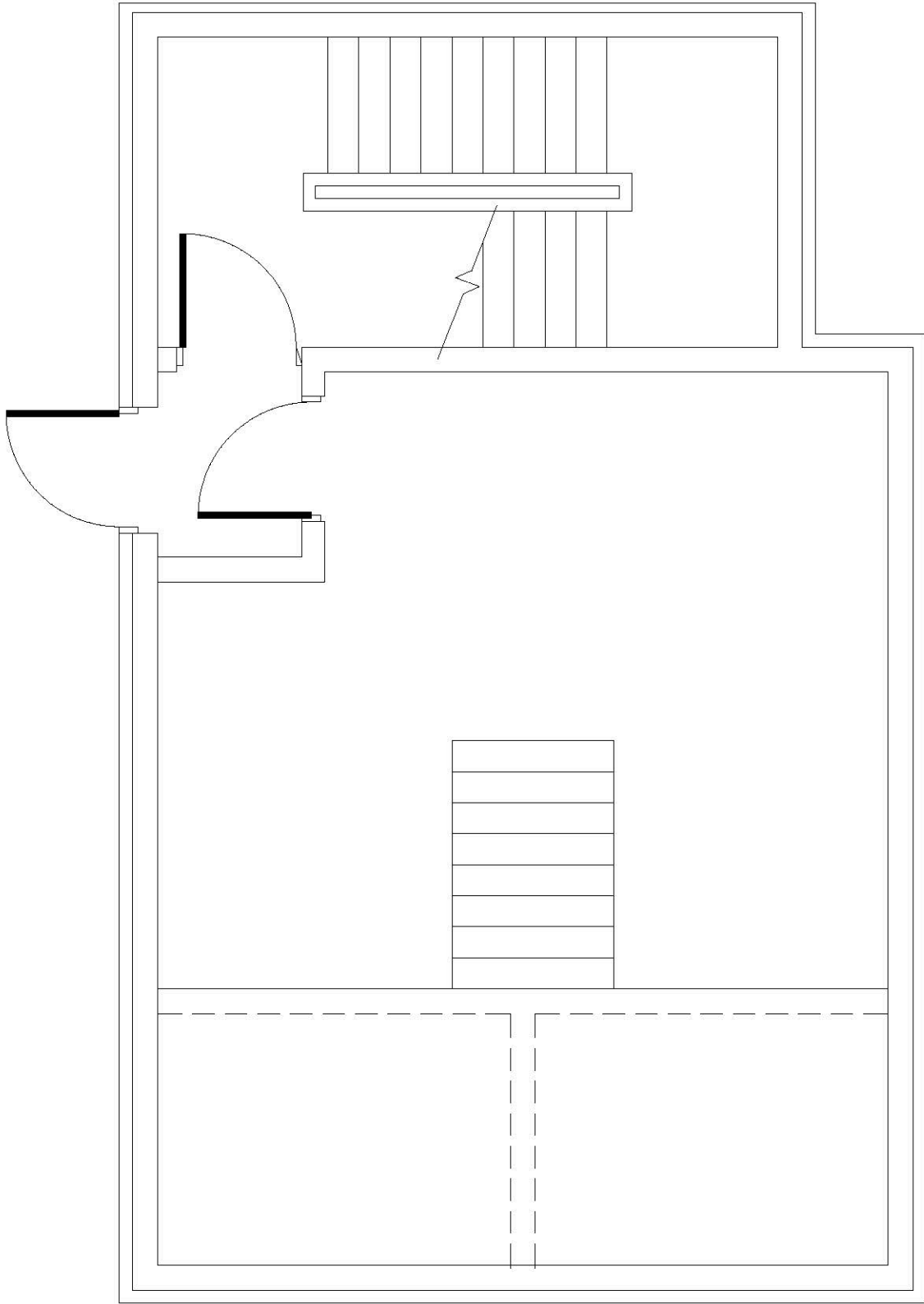
Third Floor
Floor Plan

PROJECT TITLE
851
City Hall
North

PROJECT NO. SHEET

REV. NO. 





City of
Saskatoon

**Infrastructure Services
Department**

Facilities Branch
306-975-3300

GENERAL NOTES:

1. All dimensions are in millimetres.
2. Drawings are not to be scaled.
3. All drawings to be read in conjunction with the specifications, unless otherwise noted.
4. Verify site conditions and location of all utilities prior to the start of construction.
5. Report all discrepancies to the Consultant.
6. If in doubt, ask.

REV	ISSUED FOR	DATE
-----	------------	------

DESIGNED BY:	DRAWN BY: jb	CHECKED BY:	REQUESTED BY:
--------------	-----------------	-------------	---------------

SCALE: 1:50	DATE: 19/10/04
----------------	-------------------

SHEET NAME	Asbuilt
------------	---------

**Penthouse Floor
Base Plan**

PROJECT TITLE

**851
City Hall North
North**

PROJECT NO.

SHEET

REV. NO.



City Hall North																
			SAMPLE DATA													
Floor	Room Number	Use	SAMPLE SAMPLE REP	Sample ID	Date DD/MM/YY	Asbestos Type	% of Asbestos	Tradename ACM Product	Condition	Priority	Description of Sample Location	Asbestos Content In Area	Potential for Disturbance	Action	Comments	
B	B01	Storage										No Accessible ACM				
B	B02	Trades Office/Lunch Room										No Accessible ACM				
B	B03											No Accessible ACM				
B	B04	Parkade	Sample	B15-ASB.11	22-Jan-15	None Detected		Pipeline Fitting Compound			Parkade - Small Pipeline Fitting On DCW Line Near Basement	No Accessible ACM				
B	B04	Parkade	Sample	B15-ASB.12	22-Jan-15	None Detected		Pipeline Fitting Compound			Parkade - Small Pipeline Fitting On DHW Line Near Basement	No Accessible ACM				
B	B04	Parkade	Sample	B15-ASB.13	22-Jan-15	None Detected		Pipeline Fitting Compound			Parkade - Lineal Pipe Insulation On DHW Line Near Basement	No Accessible ACM				
B	B04	Parkade	Sample	B15-ASB.14	22-Jan-15	None Detected		Pipeline Fitting Compound			Parkade - Medium Pipeline Fitting Adjacent Unit Heater(Centre of Parkade)	No Accessible ACM				
B	B04	Parkade	Sample	B15-ASB.15	22-Jan-15	None Detected		Pipeline Fitting Compound			Parkade - Medium Pipeline Fitting Adjacent Unit Heater Adjacent Garage Door	No Accessible ACM				
B	B04	Parkade	Sample	B15-ASB.16	22-Jan-15	None Detected		Pipeline Fitting Compound			Parkade - LPS Pipeline Fitting In South West Corner	No Accessible ACM				
B	B04	Parkade	Sample	B15-ASB.17	22-Jan-15	None Detected		Pipeline Fitting Compound			Parkade - Pipeline Fitting In South West Corner	No Accessible ACM				
B	B04	Parkade	Sample	B15-ASB.18	22-Jan-15	None Detected		Pipeline Fitting Compound			Parkade - CHWR Pipeline Fitting In South West Corner	No Accessible ACM				
B	B04	Parkade	Sample	B15-ASB.19	22-Jan-15	None Detected		Pipeline Fitting Compound			Parkade - CHWS Pipeline Fitting In South West Corner	No Accessible ACM				
B	B05	Chiller Room	Sample	B15-ASB.1	16-Jan-15	None Detected		Pipeline Fitting Compound			Basement Chiller Room - Large Pipeline Fitting On Yellow Steam Line Adjacent Wet Wall	No Accessible ACM				
B	B05	Chiller Room	Sample	B15-ASB.2	16-Jan-15	None Detected		Pipeline Fitting Compound			Basement Chiller Room - Small Green WHWR Fitting Adjacent South Entry	No Accessible ACM				
B	B05	Chiller Room	Sample	B15-ASB.3	16-Jan-15	None Detected		Pipeline Fitting Compound			Basement Chiller Room - Large Pipeline Fitting On Green CHS Line Adjacent Fan F-1	No Accessible ACM				
B	B05	Chiller Room	Sample	B15-ASB.4	16-Jan-15	None Detected		Pipeline Fitting Compound			Basement Chiller Room - Medium Pipeline Fitting On Red "F" Line Adjacent Breaker Box In North East Corner	No Accessible ACM				
B	B06											No Accessible ACM				
B	BS2	Stairwell										No Accessible ACM				
B	E-1	Elevator										No Accessible ACM				

Bersch Associates Ltd.																
City Hall North			SAMPLE DATA													
Floor	Room Number	Use	SAMPLE SAMPLE REP	Sample ID	Date DD/MM/YY	Asbestos Type	% of Asbestos	Tradename ACM Product	Condition	Priority	Description of Sample Location	Asbestos Content In Area	Potential for Disturbance	Action	Comments	
B	B07	Main Electrical Service Ramp Room Storage										No Accessible ACM				
B	B08											No Accessible ACM				
B	B09											No Accessible ACM				
B	B09A	Stairwell										No Accessible ACM				
B	B09B											No Accessible ACM				
B	B10											No Accessible ACM				
B	BS1	Ramp Up										No Accessible ACM				
B	B11											No Accessible ACM				
B	B12											No Accessible ACM				
B	B13											No Accessible ACM				
B	B14	Corridor	Sample	B15-ASB.8	22-Jan-15	None Detected		Pipeline Fitting Compound			Basement Corridor - Medium Pipeline Fittings On HWS At Rear Of Elevator	No Accessible ACM				
B	B14	Corridor	Sample	B15-ASB.9	22-Jan-15	None Detected		Pipeline Fitting Compound			Basement Corridor - Small Pipeline Fitting On DHW At Rear Of Elevator	No Accessible ACM				
B	B14	Corridor	Sample	B15-ASB.10	22-Jan-15	None Detected		Pipeline Fitting Compound			Basement Corridor - Small Pipeline Fitting On DHW At Rear Of Elevator	No Accessible ACM				
B	BS3	Stairwell										No Accessible ACM				
M	100A	Vestibule										No Accessible ACM				
M	100B	Landing										No Accessible ACM				
M	100C											No Accessible ACM				
M	S-3											No Accessible ACM				
M	101	Lobby										No Accessible ACM				
M	102	Information Desk										No Accessible ACM				
M	103	Vestibule	Sample Rep	B15-ASB.21	22-Jan-15	Chrysotile	1-5%	Vinyl Asbestos Tile	Good	3	Room #324 - 1' x 1' Floor Tile Brown With Brown & White Spec Pattern	Vinyl Asbestos Tile	Low	Manage		
M	104	Security Desk										No Accessible ACM				
M	105	Council Chambers										No Accessible ACM				
M	106	Area Behind Chambers										No Accessible ACM				
M	107											No Accessible ACM				
M	108											No Accessible ACM				
M	109	Area Behind Chambers										No Accessible ACM				
M	110	Area Behind Chambers										No Accessible ACM				
M	111	Area Behind Chambers										No Accessible ACM				
M	112	Area Behind Chambers										No Accessible ACM				
M	S-1	Stairwell										No Accessible ACM				
M	113/1A											No Accessible ACM				
M	113/1B											No Accessible ACM				
M	113/1C											No Accessible ACM				
M	113/1D											No Accessible ACM				
M	113/1E											No Accessible ACM				
M	113/1F											No Accessible ACM				

City Hall North																
			SAMPLE DATA													
Floor	Room Number	Use	SAMPLE SAMPLE REP	Sample ID	Date DD/MM/YY	Asbestos Type	% of Asbestos	Tradename ACM Product	Condition	Priority	Description of Sample Location	Asbestos Content In Area	Potential for Disturbance	Action	Comments	
M	113/1G											No Accessible ACM				
M	113/1H											No Accessible ACM				
M	113/2A											No Accessible ACM				
M	113/2B											No Accessible ACM				
M	113/2C											No Accessible ACM				
M	113/2D											No Accessible ACM				
M	113/2E											No Accessible ACM				
M	113/3A	Collections										No Accessible ACM				
M	113/3B	Collections										No Accessible ACM				
M	113/3C	Collections										No Accessible ACM				
M	113/3D	Collections										No Accessible ACM				
M	113/3E	Collections										No Accessible ACM				
M	113/3F	Collections										No Accessible ACM				
M	113/3G	Collections										No Accessible ACM				
M	113/3H	Collections										No Accessible ACM				
M	113/4A	Office										No Accessible ACM				
M	113/4B	Office										No Accessible ACM				
M	113/4C	Office										No Accessible ACM				
M	113/4D	Office										No Accessible ACM				
M	113/4E	Office										No Accessible ACM				
M	113/4F	Office										No Accessible ACM				
M	113/4G	Office										No Accessible ACM				
M	113/4H	Office										No Accessible ACM				
M	113/4J	Corridor										No Accessible ACM				
M	113/5A	Office										No Accessible ACM				
M	113/5A	Office										No Accessible ACM				
M	113/5B	Office										No Accessible ACM				
M	113/5C	Office										No Accessible ACM				
M	113/5D	Office										No Accessible ACM				
M	113/5E	Corridor										No Accessible ACM				
M	113/5F	Office										No Accessible ACM				
M	113/5G	Office										No Accessible ACM				
M	113/6A											No Accessible ACM				
M	113/6B	Corridor										No Accessible ACM				
M	113/6C											No Accessible ACM				
M	113/6D	Office										No Accessible ACM				
M	113/6E											No Accessible ACM				
M	113/7A	Office										No Accessible ACM				
M	113/7B	Office										No Accessible ACM				
M	113/7C	Office										No Accessible ACM				
M	113/7D	Office										No Accessible ACM				
M	113/7E	Office										No Accessible ACM				
M	113/7F	Office										No Accessible ACM				
M	113/7G	Office										No Accessible ACM				
M	113/7H	Office										No Accessible ACM				
M	113/7I	Office										No Accessible ACM				
M	113/7J	Office										No Accessible ACM				
M	113/8A	Office										No Accessible ACM				
M	113/8B	Office										No Accessible ACM				
M	113/8C	Office										No Accessible ACM				
M	113/8D	Office										No Accessible ACM				
M	113/9A	Office										No Accessible ACM				

City Hall North																
			SAMPLE DATA													
Floor	Room Number	Use	SAMPLE SAMPLE REP	Sample ID	Date DD/MM/YY	Asbestos Type	% of Asbestos	Tradename ACM Product	Condition	Priority	Description of Sample Location	Asbestos Content In Area	Potential for Disturbance	Action	Comments	
M	113/9B	Office										No Accessible ACM				
M	113/9C	Office										No Accessible ACM				
M	113/9D	Office										No Accessible ACM				
M	113/9E	Office										No Accessible ACM				
M	113/9F	Office										No Accessible ACM				
M	114A											No Accessible ACM				
M	114B											No Accessible ACM				
M	115	Office										No Accessible ACM				
M	116	Office										No Accessible ACM				
M	117	Office										No Accessible ACM				
M	118	Office										No Accessible ACM				
M	119	Office										No Accessible ACM				
M	120	Office										No Accessible ACM				
M	121	Office										No Accessible ACM				
M	122	Office										No Accessible ACM				
M	123	Office										No Accessible ACM				
M	124	Office										No Accessible ACM				
M	125	Office										No Accessible ACM				
M	126	Office										No Accessible ACM				
M	127/1A											No Accessible ACM				
M	127/1B											No Accessible ACM				
M	127/1C											No Accessible ACM				
M	127/1D	Corridor										No Accessible ACM				
M	127/1E											No Accessible ACM				
M	127/1F											No Accessible ACM				
M	127/2A											No Accessible ACM				
M	127/2B											No Accessible ACM				
M	127/2C											No Accessible ACM				
M	127/2D											No Accessible ACM				
M	127/2E											No Accessible ACM				
M	127/2F	Office										No Accessible ACM				
M	127/2G	Office										No Accessible ACM				
M	127/3A	Office										No Accessible ACM				
M	127/3B	Office										No Accessible ACM				
M	127/4A	Office										No Accessible ACM				
M	127/4B	Office										No Accessible ACM				
M	127/4C	Office										No Accessible ACM				
M	128/1A	Office										No Accessible ACM				
M	128/1B											No Accessible ACM				
M	128/1C	Office										No Accessible ACM				
M	128/1D	Office										No Accessible ACM				
M	128/1E	Corridor										No Accessible ACM				
M	128/2A											No Accessible ACM				
M	128/2B	Office										No Accessible ACM				
M	128/2C	Office										No Accessible ACM				
M	128/2D	Office										No Accessible ACM				
M	128/2E	Office										No Accessible ACM				
M	129	Office										No Accessible ACM				
M	130											No Accessible ACM				
M	131	Bathroom										No Accessible ACM				
M	132	Bathroom										No Accessible ACM				
M	133	Bathroom										No Accessible ACM				

City Hall North																
			SAMPLE DATA													
Floor	Room Number	Use	SAMPLE SAMPLE REP	Sample ID	Date DD/MM/YY	Asbestos Type	% of Asbestos	Tradename ACM Product	Condition	Priority	Description of Sample Location	Asbestos Content In Area	Potential for Disturbance	Action	Comments	
M	134	Bathroom										No Accessible ACM				
M	135	Corridor										No Accessible ACM				
M	136	Vestibule										No Accessible ACM				
M	E-1	Elevator										No Accessible ACM				
M	138		Sample Rep	B15-ASB.21	22-Jan-15	Chrysotile	1-5%	Vinyl Asbestos Tile	Good	3	Room #324 - 1' x 1' Floor Tile Brown With Brown & White Spec Pattern	Vinyl Asbestos Tile	Low	Manage		
M	139		Sample Rep	B15-ASB.21	22-Jan-15	Chrysotile	1-5%	Vinyl Asbestos Tile	Good	3	Room #324 - 1' x 1' Floor Tile Brown With Brown & White Spec Pattern	Vinyl Asbestos Tile	Low	Manage		
M	140											No Accessible ACM				
M	S-2	Stairwell										No Accessible ACM				
M	141											No Accessible ACM				
M	142	Storage										No Accessible ACM				
M	143	Corridor										No Accessible ACM				
M	144	Corridor										No Accessible ACM				
M	145	Corridor										No Accessible ACM				
M	146	Corridor										No Accessible ACM				
2	200/1	2nd Floor North Hallway										No Accessible ACM				
2	200/2											No Accessible ACM				
2	200/2A											No Accessible ACM				
2	200/3	Corridor										No Accessible ACM				
2	200/4	Vestibule	Sample	B15-ASB.6	21-Jan-15	None Detected		Lineal Pipe Insulation			Room # 2nd Floor Corridor - Lineal Pipe Insulation Above Ceiling Tile Adjacent Girls Washroom	No Accessible ACM				
2	201											No Accessible ACM				
2	201B											No Accessible ACM				
2	202	Corridor										No Accessible ACM				
2	202B	Office										No Accessible ACM				
2	203											No Accessible ACM				
2	204											No Accessible ACM				
2	205	Bathroom										No Accessible ACM				
2	206											No Accessible ACM				
2	207											No Accessible ACM				
2	208											No Accessible ACM				
2	209/1A		Sample	B15-ASB.5	21-Jan-15	None Detected		Fireproofing			Area #209 - Spray On Fire-Proofing	No Accessible ACM				
2	209/1B											No Accessible ACM				
2	209/1C											No Accessible ACM				
2	209/1D											No Accessible ACM				
2	209/1E											No Accessible ACM				
2	210	Office	Sample Rep	B15-ASB.21	22-Jan-15	Chrysotile	1-5%	Vinyl Asbestos Tile	Good	3	Room #324 - 1' x 1' Floor Tile Brown With Brown & White Spec Pattern	Vinyl Asbestos Tile	Low	Manage		
2	211	Office										No Accessible ACM				
2	212											No Accessible ACM				
2	213											No Accessible ACM				
2	214											No Accessible ACM				
2	215	Storage										No Accessible ACM				
2	216	Bathroom										No Accessible ACM				

City Hall North																
			SAMPLE DATA													
Room	Room	Use	SAMPLE	Sample	Date	Asbestos	% of	Tradename			Description of	Asbestos Content	Potential for	Action		
Floor	Number		SAMPLE REP	ID	DD/MM/YY	Type	Asbestos	ACM Product	Condition	Priority	Sample Location	In Area	Disturbance		Comments	
2	217	Bathroom										No Accessible ACM				
2	S-1	Stairwell										No Accessible ACM				
2	218/1A	Office										No Accessible ACM				
2	218/1B	Office										No Accessible ACM				
2	218/1C	Office										No Accessible ACM				
2	219/1A											No Accessible ACM				
2	219/1B											No Accessible ACM				
2	219/1C											No Accessible ACM				
2	220	Admin Hallway										No Accessible ACM				
2	221											No Accessible ACM				
2	222											No Accessible ACM				
2	223											No Accessible ACM				
2	224/1A											No Accessible ACM				
2	224/1B											No Accessible ACM				
2	225											No Accessible ACM				
2	225/1A											No Accessible ACM				
2	225/1B											No Accessible ACM				
2	225/1C											No Accessible ACM				
2	225/1D											No Accessible ACM				
2	225/2A											No Accessible ACM				
2	225/2B											No Accessible ACM				
2	225/2C											No Accessible ACM				
2	225/2D											No Accessible ACM				
2	225/E											No Accessible ACM				
2	226	Corridor										No Accessible ACM				
2	227											No Accessible ACM				
2	228	Flex Area										No Accessible ACM				
2	229A		Sample Rep	B15-ASB.21	22-Jan-15	Chrysotile	1-5%	Vinyl Asbestos Tile	Good	3	Room #324 - 1' x 1' Floor Tile Brown With Brown & White Spec Pattern	Vinyl Asbestos Tile	Low	Manage		
2	229B		Sample Rep	B15-ASB.21	22-Jan-15	Chrysotile	1-5%	Vinyl Asbestos Tile	Good	3	Room #324 - 1' x 1' Floor Tile Brown With Brown & White Spec Pattern	Vinyl Asbestos Tile	Low	Manage		
2	230	Flex Area										No Accessible ACM				
2	231	Committee Room 'A'										No Accessible ACM				
2	232A	Communications										No Accessible ACM				
2	232B	Communications										No Accessible ACM				
2	232C	Communications										No Accessible ACM				
2	233											No Accessible ACM				
2	235	Committee Room 'B'										No Accessible ACM				
2	236/1A	Closet										No Accessible ACM				
2	236/1B											No Accessible ACM				
2	236/1C											No Accessible ACM				
2	237											No Accessible ACM				
2	238/1A											No Accessible ACM				
2	238/1B											No Accessible ACM				
2	238/1C											No Accessible ACM				
2	238/1D											No Accessible ACM				
2	238/1E											No Accessible ACM				
2	238/1F											No Accessible ACM				

City Hall North																
			SAMPLE DATA													
Floor	Room Number	Use	SAMPLE SAMPLE REP	Sample ID	Date DD/MM/YY	Asbestos Type	% of Asbestos	Tradename ACM Product	Condition	Priority	Description of Sample Location	Asbestos Content In Area	Potential for Disturbance	Action	Comments	
2	239/1A											No Accessible ACM				
2	239/1B											No Accessible ACM				
2	239/2A											No Accessible ACM				
2	239/2B											No Accessible ACM				
2	239/2C	Office										No Accessible ACM				
2	239/2D	Office										No Accessible ACM				
2	240	Office										No Accessible ACM				
2	241	Office										No Accessible ACM				
2	242	Office										No Accessible ACM				
2	243	Office										No Accessible ACM				
2	244	Office										No Accessible ACM				
2	245	Office										No Accessible ACM				
2	246	Office										No Accessible ACM				
2	247	Office										No Accessible ACM				
2	248	Office										No Accessible ACM				
2	249	Office										No Accessible ACM				
2	250/1A	Library										No Accessible ACM				
2	250/1B											No Accessible ACM				
2	250/1C											No Accessible ACM				
2	251	Closet										No Accessible ACM				
2	252	Storage	Sample Rep	B15-ASB.21	22-Jan-15	Chrysotile	1-5%	Vinyl Asbestos Tile	Good	3	Room #324 - 1' x 1' Floor Tile Brown With Brown & White Spec Pattern	Vinyl Asbestos Tile	Low	Manage		
2	253	Bathroom										No Accessible ACM				
2	254	Bathroom										No Accessible ACM				
2	255	Bathroom										No Accessible ACM				
2	256	Bathroom										No Accessible ACM				
2	257	Storage										No Accessible ACM				
2	258/1A	Office										No Accessible ACM				
2	258/1B	Office										No Accessible ACM				
2	258/1C	Office										No Accessible ACM				
2	258/1D	Office										No Accessible ACM				
2	258/2A	Office										No Accessible ACM				
2	258/2B	Office										No Accessible ACM				
2	258/2C	Office										No Accessible ACM				
2	259	Office										No Accessible ACM				
2	260	Office										No Accessible ACM				
2	261	Office										No Accessible ACM				
2	262	Office										No Accessible ACM				
2	263	Office										No Accessible ACM				
2	265	Office	Sample Rep	B15-ASB.21	22-Jan-15	Chrysotile	1-5%	Vinyl Asbestos Tile	Good	3	Room #324 - 1' x 1' Floor Tile Brown With Brown & White Spec Pattern	Vinyl Asbestos Tile	Low	Manage		
2	266	Office	Sample Rep	B15-ASB.21	22-Jan-15	Chrysotile	1-5%	Vinyl Asbestos Tile	Good	3	Room #324 - 1' x 1' Floor Tile Brown With Brown & White Spec Pattern	Vinyl Asbestos Tile	Low	Manage		
2	267	Office										No Accessible ACM				
2	S-2	Stairwell										No Accessible ACM				
2	268											No Accessible ACM				
2	E-1	Elevator										No Accessible ACM				
2	270	Office										No Accessible ACM				
2	271	Office										No Accessible ACM				

City Hall North																
			SAMPLE DATA													
Room	Room	Use	SAMPLE	Sample	Date	Asbestos	% of	Tradename			Description of	Asbestos Content	Potential for	Action		
Floor	Number		SAMPLE REP	ID	DD/MM/YY	Type	Asbestos	ACM Product	Condition	Priority	Sample Location	In Area	Disturbance		Comments	
3	300/1A	3rd Floor North										No Accessible ACM				
3	300/1B	Hallway										No Accessible ACM				
		Corridor										No Accessible ACM				
3	301/1A	Office	Sample	B15-ASB.7	21-Jan-15	None		Duct Insulation			Infrastructure Services	No Accessible ACM				
3	301/1B	Office				Detected					- Duct Insulation On Large	No Accessible ACM				
3	301/1C	Office									Silver Duct Above Ceiling Tile	No Accessible ACM				
3	301/1D	Office										No Accessible ACM				
3	301/1E	Office										No Accessible ACM				
3	301/1F	Corridor										No Accessible ACM				
3	301/2A	Office										No Accessible ACM				
3	301/2B	Office										No Accessible ACM				
3	301/2C	Office										No Accessible ACM				
3	301/2D	Office										No Accessible ACM				
3	301/2E	Office										No Accessible ACM				
3	301/2F	Office										No Accessible ACM				
3	301/2G	Office										No Accessible ACM				
3	301/2H	Office										No Accessible ACM				
3	301/3A	Office										No Accessible ACM				
3	301/3B	Office										No Accessible ACM				
3	301/3C	Corridor										No Accessible ACM				
3	301/3D	Office										No Accessible ACM				
3	301/3E	Corridor										No Accessible ACM				
3	301/4A	Office										No Accessible ACM				
3	301/4B	Corridor										No Accessible ACM				
3	301/4C	Office										No Accessible ACM				
3	301/4D	Office										No Accessible ACM				
3	301/4E											No Accessible ACM				
3	301/4F											No Accessible ACM				
3	301/4G	Office										No Accessible ACM				
3	301/5A	Office										No Accessible ACM				
3	301/5B	Office										No Accessible ACM				
3	301/5C	Office										No Accessible ACM				
3	301/5D	Office										No Accessible ACM				
3	301/5E	Office										No Accessible ACM				
3	301/5F											No Accessible ACM				
3	301/5G	Office										No Accessible ACM				
3	301/5H	Office										No Accessible ACM				
3	301/6A	Office										No Accessible ACM				
3	301/6B	Office										No Accessible ACM				
3	301/6C	Office										No Accessible ACM				
3	301/6D	Office										No Accessible ACM				
3	301/6E	Office										No Accessible ACM				
3	301/6F	Office										No Accessible ACM				
3	301/6G	Office										No Accessible ACM				
3	301/6H	Office										No Accessible ACM				
3	301/6J	Corridor										No Accessible ACM				
3	301/7A	Office										No Accessible ACM				
3	301/7B	Office										No Accessible ACM				
3	301/7C	Office										No Accessible ACM				
3	301/7D	Office										No Accessible ACM				

City Hall North																
			SAMPLE DATA													
Floor	Room Number	Use	SAMPLE SAMPLE REP	Sample ID	Date DD/MM/YY	Asbestos Type	% of Asbestos	Tradename ACM Product	Condition	Priority	Description of Sample Location	Asbestos Content In Area	Potential for Disturbance	Action	Comments	
3	301/8A	Office										No Accessible ACM				
3	301/8B	Office										No Accessible ACM				
3	301/8C	Office										No Accessible ACM				
3	301/9A	Office										No Accessible ACM				
3	301/9B	Office										No Accessible ACM				
3	301/9C	Office										No Accessible ACM				
3	301/9D	Corridor										No Accessible ACM				
3	301/9E	Office										No Accessible ACM				
3	302/1A	Office										No Accessible ACM				
3	302/1B	Office										No Accessible ACM				
3	302/1C	Office										No Accessible ACM				
3	302/1D	Office										No Accessible ACM				
3	302/1E	Office										No Accessible ACM				
3	302/1F	Office										No Accessible ACM				
3	302/1G	Office										No Accessible ACM				
3	302/1H	Office										No Accessible ACM				
3	302/2A	Office										No Accessible ACM				
3	302/2B	Office										No Accessible ACM				
3	302/2C	Office										No Accessible ACM				
3	302/2D	Office										No Accessible ACM				
3	302/2E	Corridor										No Accessible ACM				
3	302/2F	Office										No Accessible ACM				
3	302/2G	Office										No Accessible ACM				
3	302/4A	Office										No Accessible ACM				
3	302/4B	Office										No Accessible ACM				
3	302/4C	Office										No Accessible ACM				
3	302/5A	Office										No Accessible ACM				
3	302/5B	Office										No Accessible ACM				
3	302/5C	Office										No Accessible ACM				
3	302/5D	Office										No Accessible ACM				
3	302/5E	Office										No Accessible ACM				
3	302/5G	Office										No Accessible ACM				
3	302/5H	Corridor										No Accessible ACM				
3	303											No Accessible ACM				
3	304											No Accessible ACM				
3	S-1	Stairwell										No Accessible ACM				
3	305	Office										No Accessible ACM				
3	306	Office										No Accessible ACM				
3	307	Office										No Accessible ACM				
3	306	Office										No Accessible ACM				
3	308	Office										No Accessible ACM				
3	309	Office										No Accessible ACM				
3	310	Office										No Accessible ACM				
3	311	Office										No Accessible ACM				
3	312	Office										No Accessible ACM				
3	313	Office										No Accessible ACM				
3	314	Office										No Accessible ACM				
3	315	Bathroom										No Accessible ACM				
3	316	Bathroom										No Accessible ACM				
3	317	Bathroom										No Accessible ACM				
3	318	Bathroom										No Accessible ACM				
3	319/1A											No Accessible ACM				

Bersch Associates Ltd.															
City Hall North			SAMPLE DATA												
	Room		SAMPLE	Sample	Date	Asbestos	% of	Tradename			Description of	Asbestos Content	Potential for		
Floor	Number	Use	SAMPLE REP	ID	DD/MM/YY	Type	Asbestos	ACM Product	Condition	Priority	Sample Location	In Area	Disturbance	Action	Comments
3	319/1B											No Accessible ACM			
3	319/1C											No Accessible ACM			
3	320											No Accessible ACM			
3	321											No Accessible ACM			
3	323		Sample Rep	B15-ASB.21	22-Jan-15	Chrysotile	1-5%	Vinyl Asbestos Tile	Good	3	Room #324 - 1' x 1' Floor Tile Brown With Brown & White Spec Pattern	Vinyl Asbestos Tile	Low	Manage	
3	324		Sample	B15-ASB.20	22-Jan-15	None Detected		Fire-Stop Material			Room #324 - Fire Stop Material At Floor Penetrations	No Accessible ACM			
3	324		Sample	B15-ASB.21	22-Jan-15	Chrysotile	1-5%	Vinyl Asbestos Tile	Good	3	Room #324 - 1' x 1' Floor Tile Brown With Brown & White Spec Pattern	Vinyl Asbestos Tile	Low	Manage	
3	325											No Accessible ACM			
3	S-2	Stairwell										No Accessible ACM			
3	326											No Accessible ACM			
3	E-1	Elevator										No Accessible ACM			
3	327											No Accessible ACM			
3	328											No Accessible ACM			
3	329	Storage										No Accessible ACM			
3	330											No Accessible ACM			

City of Saskatoon – City Hall Parkade Electrical, Parkade, Boiler Room Electrical, & B038 Fan Room Pre-Renovation/Demolition Assessment

March 24, 2020

Client: City of Saskatoon
3rd Avenue North
Saskatoon, SK
S7K 0K1

Attention: Blaine Knoblauch

File Number: B67PDC24J

Subject: Pre-Renovation/Demolition Assessment – City Hall

Wes Berschinsky of Bersch Consulting Ltd. conducted a site inspection on March 13, 2020 to identify Asbestos Containing Materials (ACM) affected by renovation/demolition activity within various areas of City Hall. Previous sampling within the areas affected were reviewed to determine suspect materials requiring sampling. Areas inspected included the Parkade Electrical Room, Parkade, Boiler Room Electrical, and B038 Fan Room. The purpose of the visit was to investigate and collect bulk samples to determine the presence/absence of asbestos. In total, Ten (10) bulk samples were collected and analyzed for the identification of asbestos. Asbestos **was** detected within two of the samples collected in the form of wall parging located on the east wall adjacent the doorway of the Boiler Room Electrical Room and the black rigid insulation located within the F17 Coil Room.

The results for the bulk samples collected were obtained by examination in accordance with the current USEPA 600/R-93/116 Method for the analysis of asbestos in building materials using polarized light microscopy and dispersion staining techniques. The detection limit of this method is listed as less than 1% by volume. Please reference to **Appendix I** for the **Bulk Sample Analysis Results**.

This test report relates only to the materials collected for examination and any use or extension of the information by the client of these results is the responsibility of the client.

Site Observations and Information

The building property located at 222 - 3rd Avenue North, Saskatoon, Saskatchewan was inspected with the intent of identifying all asbestos-containing materials (ACMs) within the areas scheduled for renovation/demolition activity. The following information pertains to inspection conducted and the samples collected for analysis for the detection of asbestos.

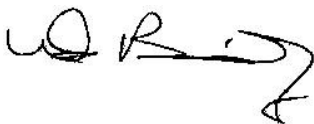
- a) Samples were collected of suspect materials such as pipe fitting mud compounds, insulation materials, concrete walls, plaster/parging wall finishes, and cinderblock walls.

- b) The gray wall finish on the east wall of the Boiler Room Electrical Room was identified as containing 2% Chrysotile Asbestos. This material is classified as a non-friable asbestos material and may be removed as a Low Risk Asbestos Process using manual removal methods. If no interface is required with this material to accommodate the building improvements, it may remain in place until future renovation/demolition activity warrants prior removal. If coring through wall is required for conduit installation, procedures must be implemented that minimize any potential for airborne fibre release.
- c) The rigid insulation material within the air plenums was identified as containing 8% Chrysotile Asbestos in the black tar coating. The insulation itself is a fibre-glass composition. The black tar coating is also a non-friable material and poses no health-related concern in its present condition and location. The Chrysotile fibres are imbedded in a tar mixture that would require elimination of the tar for the fibres to become airborne. If removal of the rigid insulation is not necessary to accommodate the building improvements, it may remain in place until renovation/demolition activity warrants prior removal.
- d) Any removal of the rigid insulation with black tar coating will be completed as a Low Risk Asbestos Process. This will entail the isolation of any penetrations into the plenum to prevent any airflow through the work area. Isolations will be completed with poly-weave 6 mill sheeting and sealed with duct tape to ensure of an airtight seal. Any black tar coated insulation removed will be disposed of in 6 mil asbestos disposal bags and transported to an approved landfill. Workers involved in the removal activity will be equipped with P100 respirators and wear disposable coveralls. Upon completion of the removal activity all dust/debris from within the work area will be removed using HEPA vacuums. For any areas where the insulation requires removal Bersch Consulting Ltd. will complete inspection and air monitoring prior to deem the area suitable for access by other trades involved in the project and verify that all required work has been completed in accordance with all regulating authorities.

Please reference attached **Appendix I Bulk Sample Analysis Results** and **Appendix II** for the **Site Photos** of building materials positively identified as asbestos containing.

If any questions arise regarding the attached information, please contact our office at (306) 978-6665.

Sincerely,



Wes Berschiminsky, EP
Bersch Consulting Ltd.
B67PDC24J – CityHall

Appendix I

Bulk Sample Analysis Results

Bulk Sample Analysis Report

March 24, 2020

Project Number: B67.19

Client: City of Saskatoon

Contact: Blaine Knoblauch

Location: City Hall – S67BAC24J

Sample Number	Sample Date	Sample Material	Sample Location and Information	Asbestos	%	Analyst
1	2020/03/13	Grey Skim Coat	Electrical Room adj. Boiler Room – East Wall adj. Entrance	Chrysotile	2	WB/EMSL
2	2020/03/13	Wall Composition	Electrical Room adj. Boiler Room – North Wall	No Asbestos Detected		WB/EMSL
3	2020/03/13	Pipe Fitting Mud Compound	F17 Fan Room	No Asbestos Detected		WB/EMSL
4	2020/03/13	Pipe Fitting Mud Compound	F17 Coil Room	No Asbestos Detected		WB/EMSL
5	2020/03/13	Black Tar Coating on Rigid Fibre-glass	F17 Coil Room – North Wall	Chrysotile	8%	WB/EMSL
6	2020/03/13	Concrete Wall Composition	Parkade Wall adj to Maintenance Storage	No Asbestos Detected		WB/EMSL

Note: The results for the samples submitted were obtained by examination in accordance with the current USEPA 600/R-93/116 Method for the analysis of asbestos in building materials using polarized light microscopy and dispersion staining techniques. The detection limit of this method is listed as less than 1% by volume.

Sample Number	Sample Date	Sample Material	Sample Location and Information	Asbestos	%	Analyst
7	2020/03/13	Concrete Wall Composition	Parkade South Wall Adjacent Conduit	No Asbestos Detected		WB/EMSL
8	2012003/13	Cinderblock Wall Composition	Electrical Room Adj. to Parkade South Block Wall	No Asbestos Detected		WB/EMSL

Note: The results for the samples submitted were obtained by examination in accordance with the current USEPA 600/R-93/116 Method for the analysis of asbestos in building materials using polarized light microscopy and dispersion staining techniques. The detection limit of this method is listed as less than 1% by volume.

Appendix II

Site Photos

Photo ID

B67PDC24J - 001

Sample Number 1**Description**

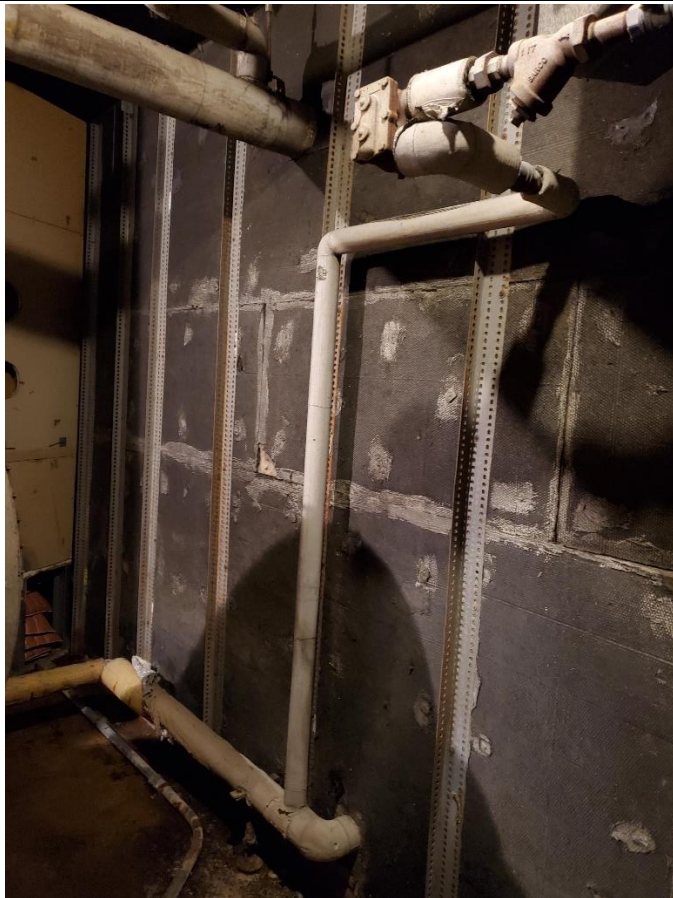
Grey Skim Coat in
Electrical Room adj. Boiler
Room – East Wall adj.
Entrance

**Photo ID**

B67PDC24J - 002

Sample Number 5**Description**

Black Tar Coating on
Rigid Fibre-glass in F17
Coil Room – North Wall



July 24, 2019

The City of Saskatoon
222 3rd Avenue North
Saskatoon, Saskatchewan
S7K 0J5

ATTENTION: Cris Figueroa

SUBJECT: Bulk Sample Analysis Report – City Hall North Washrooms

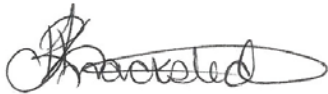
Please find attached the laboratory results for the bulk samples collected on July 12, 2019 from City Hall North located at 222 3rd Avenue North, Saskatoon, Saskatchewan. The samples were analyzed for the identification of asbestos. Asbestos **was not** detected within the samples.

The results for the samples submitted were obtained by examination in accordance with the current USEPA 600/R-93/116 Method for the analysis of asbestos in building materials using polarized light microscopy and dispersion staining techniques. The detection limit of this method is listed as less than 1% by volume.

This test report relates only to the materials sent for examination and any use or extension of the information by the client of these results is the responsibility of the client.

If any questions arise on the results of the attached information, please contact our office. Thank you for this opportunity of service.

Sincerely,



Tyneal Knackstedt
Bersch Consulting Ltd.
B67BLG12I – City Hall North Washrooms

Bulk Sample Analysis Report

July 24, 2019

Project Number: B67.19

Client: City of Saskatoon

Contact: Cris Figueroa

Location: City Hall North

File Number: B67BAG12I

Sample Number	Sample Date	Sample Material	Sample Location and Information	Asbestos	%	Analyst
1	2019/07/12	Ceramic Tile Grout	2 nd Floor Women's Washroom	No Asbestos Detected		EMSL/WB
2	2019/07/12	Drywall Mud Compound	2 nd Floor Women's Washroom Divider Wall	No Asbestos Detected		EMSL/WB
3	2019/07/12	Ceramic Tile Adhesive	3 rd Floor Women's Washroom Divider Wall	No Asbestos Detected		EMSL/WB
4	2019/07/12	Drywall Mud Compound	3 rd Floor Women's Washroom Ceiling – Composite	No Asbestos Detected		EMSL/WB
5	2019/07/12	Drywall Mud Compound	3 rd Floor Men's Washroom Wall	No Asbestos Detected		EMSL/WB

Note: The results for the samples submitted were obtained by examination in accordance with the current USEPA 600/R-93/116 Method for the analysis of asbestos in building materials using polarized light microscopy and dispersion staining techniques. The detection limit of this method is listed as less than 1% by volume.

Sample Number	Sample Date	Sample Material	Sample Location and Information	Asbestos	%	Analyst
6	2019/07/12	Drywall Mud Compound	3 rd Floor Men's Washroom Ceiling - Composite	No Asbestos Detected		EMSL/WB

Note: The results for the samples submitted were obtained by examination in accordance with the current USEPA 600/R-93/116 Method for the analysis of asbestos in building materials using polarized light microscopy and dispersion staining techniques. The detection limit of this method is listed as less than 1% by volume.

BERSCH & ASSOCIATES LTD.

May 27, 2015

City Of Saskatoon
Interior Design Consultant, Facilities & Fleet Management
3130 Laurier Drive
Saskatoon, Sk.
S7L 5J7

ATTENTION: Kimberly Rudd

SUBJECT: Bulk Sample Analysis Report

Please find attached the laboratory results for the bulk analysis of the sample collected within City Hall North Room 320 Office Renovation Area. The sample was analyzed in our laboratory for the identification of asbestos. Asbestos was detected.

The area where the floor covering is currently damaged will require cleanup with the use of a vacuum equipped with a HEPA filtration system. The option to cover overtop the existing flooring if the glue/tar requires removal, depending on how it come off, will at minimum require low risk removal procedures. The other option is to remove the existing floor covering utilizing the high risk asbestos process guidelines.

The result for the bulk sample was obtained by examination in accordance with the current USEPA 600/R-93/116 Method for the analysis of asbestos in building materials using polarized light microscopy and dispersion staining techniques. The detection limit of this method is listed as less than 1% by volume.

This test report relates only to the materials sent for examination and any use or extension of the information by the client of these results is the responsibility of the client. If any questions arise on the results of the attached information please contact me at 306 222 7477. Thank you for this opportunity of service!

Sincerely,

Brad Berschiminsky
Bersch & Associates Ltd.
File: B67BLE22

BERSCH & ASSOCIATES LTD.

October 3rd, 2016

City of Saskatoon
Infrastructure Services Department
City Hall North
222 3rd Avenue North
Saskatoon, Sk
S7K 0J5

ATTENTION: Cris Figueroa

SUBJECT: Bulk Sample Analysis Report – City Hall North

Please find attached the laboratory results for the bulk samples collected from City Hall North – Council Chambers on September 30th, 2016 located at 222 3rd Avenue North, Saskatoon, SK. The samples were analyzed for the identification of asbestos. Asbestos **was** detected in one of the samples.

The results for the samples submitted were obtained by examination in accordance with the current USEPA 600/R-93/116 Method for the analysis of asbestos in building materials using polarized light microscopy and dispersion staining techniques. The detection limit of this method is listed as less than 1% by volume.

This test report relates only to the materials sent for examination and any use or extension of the information by the client of these results is the responsibility of the client.

If any questions arise on the results of the attached information, please contact our office 306 222 7477. Thank you for this opportunity of service!

Sincerely,



Brad Berschiminsky
Bersch & Associates Ltd.

File: B67BLI30F – City Hall North

Box 3568

Humboldt, Sask. S0K 2A0

BULK SAMPLE ANALYSIS REPORT**PROJECT NO: B67.16****CLIENT: CITY OF SASKATOON****INFRASTRUCTURE SERVICES DEPARTMENT****CONTACT: CRISTIAN FIGUEROA****LOCATION: CITY HALL NORTH - 222 3RD AVENUE NORTH, SASKATOON, SK**

NO.	DATE	SAMPLE INFORMATION	ASBESTOS	%	ANALYST
1	30-Sep-16	105 - Council Chambers - Drywall Mud Compound (Ceiling)	No Asbestos Detected		WB
2	30-Sep-16	105 - Council Chambers Ceiling Space - Drywall Mud Compound Compilation	No Asbestos Detected		WB
3a	30-Sep-16	105 - Council Chambers Ceiling Space - Duct Mastic Adj. 107 Ceiling Space Access Ladder - Red	Chrysotile	5%	WB
3b	30-Sep-16	105 - Council Chambers Ceiling Space - Duct Mastic Adj. 107 Ceiling Space Access Ladder - Yellow	No Asbestos Detected		WB
4	30-Sep-16	105 - Council Chambers Ceiling Space - Duct Sealant Tape	No Asbestos Detected		WB
5	30-Sep-16	105 - Council Chambers Ceiling Space - Duct/Ceiling Penetration Insulation	No Asbestos Detected		WB
6	30-Sep-16	105 - Council Chambers Ceiling Space - Spray-applied Fire Proofing	No Asbestos Detected		WB

BERSCH & ASSOCIATES LTD.

January 27th, 2017

The City of Saskatoon
222 3rd Avenue North
Saskatoon, SK
S7K 0J5

ATTENTION: Darrell Wasylowich

SUBJECT: Bulk Sample Analysis Report

Please find attached our laboratory's results for the bulk samples collected January 23rd, 2017 from North City Hall, Saskatoon, SK. The samples were analyzed in our laboratory for the identification of asbestos. Asbestos **was not** detected in the samples.

The results for the samples submitted were obtained by examination in accordance with the current USEPA 600/R-93/116 Method for the analysis of asbestos in building materials using polarized light microscopy and dispersion staining techniques. The detection limit of this method is listed as less than 1% by volume.

This test report relates only to the materials sent for examination and any use or extension of the information by the client of these results is the responsibility of the client.

If any questions arise on the results of the attached information please contact our office. Thank you for this opportunity of service!

Sincerely,



Brad Berschiminsky
Bersch & Associates Ltd.

File No. – B67BLA23G – City Hall North

Bersch & Associates Ltd.

B67BAA23G

244-2002 Quebec Avenue
Saskatoon, SK S7K 1W4

BULK SAMPLE ANALYSIS REPORT**PROJECT NO: B67.17****CLIENT: CITY OF SASKATOON****CONTACT: DARRELL WASYLOWICH****LOCATION: CITY HALL NORTH - 222 3RD AVENUE NORTH, SASKATOON, SK.**

NO.	DATE	SAMPLE INFORMATION	ASBESTOS	%	ANALYST
1	23-Jan-17	Parking Garage Main Electrical Room - Ceiling Drywall Mud Compound	No Asbestos Detected		WB
2	23-Jan-17	Parking Garage Ramp Room - Concrete Material	No Asbestos Detected		WB
3	23-Jan-17	Boiler Room - Plaster	No Asbestos Detected		WB

BERSCH

CONSULTING LTD.

March 10th, 2017

The City of Saskatoon
222 3rd Avenue North
Saskatoon, SK
S7K 0J5

ATTENTION: Darrell Wasylowich

SUBJECT: Bulk Sample Analysis Report – City Hall North

Please find attached the laboratory results for the bulk samples collected February 23rd, 2017 from the Server Room at City Hall North, located at 222 3rd Avenue North, Saskatoon, SK. The samples were analyzed for the identification of asbestos. Asbestos **was not** detected in the samples.

The results for the samples submitted were obtained by examination in accordance with the current USEPA 600/R-93/116 Method for the analysis of asbestos in building materials using polarized light microscopy and dispersion staining techniques. The detection limit of this method is listed as less than 1% by volume.

This test report relates only to the materials sent for examination and any use or extension of the information by the client of these results is the responsibility of the client.

If any questions arise on the results of the attached information please contact our office. Thank you for this opportunity of service!

Sincerely,



Mitch Webber
Bersch Consulting Ltd.

File No. – B67BLB23G – City Hall North

Bersch Consulting Ltd.

B67BAB23G

244-2002 Quebec Avenue
Saskatoon, SK S7K 1W4

BULK SAMPLE ANALYSIS REPORT**PROJECT NO: B67.17****CLIENT: CITY OF SASKATOON****CONTACT: DARRELL WASYLOWICH****LOCATION: CITY HALL NORTH - 222 3RD AVENUE NORTH, SASKATOON, SK.**

NO.	DATE	SAMPLE INFORMATION	ASBESTOS	%	ANALYST
1	23-Feb-17	Server Room - Storage -Drywall	No Asbestos Detected		WB
2	23-Feb-17	Server Room - West Wall -Drywall	No Asbestos Detected		WB
3	23-Feb-17	Server Room - South Wall -Drywall	No Asbestos Detected		WB

BERSCH

CONSULTING LTD.

May 23, 2017

The City of Saskatoon
222 3rd Avenue North
Saskatoon, SK
S7K 0J5

ATTENTION: Kimberly Rudd

SUBJECT: Bulk Sample Analysis Report

Please find attached the laboratory results for the bulk sample collected on May 17, 2017 from room 229a/b at City Hall North located in Saskatoon, SK. The sample was analyzed for the identification of asbestos. Asbestos **was not** detected in the sample.

The results for the sample submitted was obtained by examination in accordance with the current USEPA 600/R-93/116 Method for the analysis of asbestos in building materials using polarized light microscopy and dispersion staining techniques. The detection limit of this method is listed as less than 1% by volume.

This test report relates only to the materials sent for examination and any use or extension of the information by the client of these results is the responsibility of the client.

If any questions arise on the results of the attached information, please contact our office. Thank you for this opportunity of service!

Sincerely,



Mitch Webber
Bersch Consulting Ltd.
B67BLE17G

Bersch Consulting Ltd.

B67BAE17G

244-2002 Quebec Avenue
Saskatoon, SK S7K 1W4

BULK SAMPLE ANALYSIS REPORT

PROJECT NO: B67.17

CLIENT: CITY OF SASKATOON

CONTACT: KIMBERLY RUDD

LOCATION: CITY HALL NORTH

NO.	DATE	SAMPLE INFORMATION	ASBESTOS	%	ANALYST
1	17-May-17	229a/b - Drywall Mud Compound	No Asbestos Detected		WB