

TCU PLACE ASBESTOS HAZARD ASSESSMENT SURVEY REPORT



MAY 2007

**Prepared by: Bersch & Associates Ltd.
Prepared for: Jim Greenshields – City of Saskatoon
Project No. B67.07**

1.0 INTRODUCTION

Bersch & Associates Ltd. was retained by Jim Greenshields of the City of Saskatoon to conduct an “Asbestos Hazard Assessment Review” of the TCU Place located at 35 – 22nd Street East in Saskatoon, Saskatchewan. The purpose of the survey was to locate and identify the accessible asbestos containing materials (ACM). Brad Berschinsky of Bersch & Associates Ltd conducted the survey. This report gives a detailed account of the results of the inspection and our firm’s recommendations as per the Province of Saskatchewan Occupational Health and Safety Act and Regulations.

As a result of the inspection, asbestos-containing materials were observed in a few locations throughout the building.

A review of this report should be conducted with the various personnel/contractors entering the building to perform maintenance/renovation activity. This directive will: **1)** Ensure they are familiar with the types and locations of the Asbestos Containing Materials present within the facility. **2)** Prevent an uncontrolled disturbance of the asbestos materials and possible exposure to asbestos fibres.

The recommendations contained in this report are based on the Asbestos Abatement Industry standards in Canada and the U.S.A. and in particular from the referenced standards in Section 5 of this report.

2.0 METHODOLOGY

The primary documents for guidance and criteria in this survey were the Province of Saskatchewan “Occupational Health and Safety Act 1993 and Occupational Health & Safety Regulations 1996”, Province of Saskatchewan, “Management of Asbestos”, and the U.S. Environmental Protection Agency “Guidance for Controlling Asbestos Containing Materials in Buildings. The USEPA document identifies factors associated with the “condition” and the “potential for disturbance or erosion” of asbestos containing materials (ACM). These factors help to define potential for exposure of ACM and were used to make a qualitative evaluation of the material. It should be noted that the recommendation of a “Management” Asbestos Abatement Action is based upon the premise that renovations are not scheduled in that area that will require disturbing or violating the asbestos containing material.

In total, 84 bulk samples of the suspect asbestos containing materials were collected from the facility. Fifty-Seven (57) of the samples were confirmed as containing “Chrysotile”, “Crocidolite” and/or “Amosite” asbestos. Refer to Appendix I for a copy of the Bulk Sample Analysis Report. All bulk samples collected were analyzed by Bersch & Associates Ltd. laboratory in accordance with the current U.S. 40 CFR Part 763, Vol. 52, No.210 for the analysis of asbestos in building materials using polarized light microscopy and dispersion staining techniques. The detection limit of this method is listed as > 1% by volume.

3.0 EXECUTIVE SUMMARY

The survey of the building entailed the inspection of all suspect ACM. Laboratory results indicated that “Chrysotile”, “Crocidolite” and “Amosite” asbestos is present within the building. Refer to Appendix I for the Bulk Sample Analysis Report. As a result of our site inspection, Asbestos Containing Materials (ACM) were identified in the following forms:

- *Pipeline fitting compound and lineal pipeline insulation - on the mechanical systems*
- *Mud parging compound on the mechanical duct work*
- *Vinyl asbestos floor tile & asbestos sheet floor covering*
- *Structural fireproofing*
- *Asbestos transite board and transite pipeline*
- *Incandescent light fixture heat shield material*
- *Mechanical Insulation on the pressure vessels*

All accessible ACM within the building was clearly identified to eliminate uncertainty of asbestos content. The identification of this material is as follows:

- The asbestos containing pipe fittings located on runs of fiberglass insulation were identified with a **‘RED’** dot of paint to signify asbestos containing material.
- The lineal asbestos containing pipeline insulation was identified with ‘Asbestos’ in red stencil to signify asbestos containing material.
- The asbestos containing mud parging compound on the ductwork was identified with ‘Asbestos’ in red stencil to signify asbestos containing material.
- The vinyl asbestos floor tile, asbestos sheet flooring, fireproofing and transite board are identified on the floor plans in Appendix II. The asbestos fireproofing within the enclosed structural columns was not identified on the floor plans (identified on the data spreadsheet in appendix III), only the fireproofing not enclosed with drywall was color coded on the floor plans.
- The asbestos containing transite drainpipe was identified with ‘Asbestos’ in red stencil to signify asbestos containing material.
- The Incandescent light fixture heat shield material is identified on the data spreadsheet in appendix III.
- The asbestos containing mechanical insulation on the pressure vessels was identified with ‘Asbestos’ in red stencil to signify asbestos containing material. The only exception is

the insulation within the ends of the boilers that were not stenciled but are identified on the data spreadsheet within appendix III.

The ACM located within the building was assessed and given a priority rating of One, Two, Three, or Four, with priority one items requiring the most immediate attention. The recommendation of removal was given to materials observed in poor/moderate condition, and/or with a moderate/high potential for fiber release. Please refer to appendix III the Data spread sheet, for a summary of the various areas. **Note: all areas, which are inaccessible at this time to be considered asbestos containing material until bulk sampling proves otherwise. Areas, where destructive sampling would be required to obtain a bulk sample of suspect material, were deemed as being inaccessible at this time.**

4.0 RECOMMENDATIONS:

Based upon the Occupational Health & Safety Act and Regulations of the Province of Saskatchewan the repair/removal, disposal, cleanup and management of the asbestos containing material are recommended. Refer to Appendix III, the Data Spread Sheet, summarizing the location, type of material, condition, potential for disturbance and the recommended action for the referenced areas.

5.0 ASBESTOS ABATEMENT DISCUSSION

Asbestos is a known carcinogen and is listed in the Province of Saskatchewan under the Occupational Health and Safety Regulations, Table 20 as a Designated Chemical Substance and any release of asbestos fibres into the atmosphere creates a potential health hazard. Although the mechanism and epidemiology of asbestos carcinogenesis is not yet well defined, accumulating evidence suggests the significance of exposure at even very low fiber concentrations and hence human exposure should be kept to a minimum. It should be noted however that asbestos is a natural mineral and a measurable background concentration can be detected in any location sampled (inside buildings, outside buildings, urban, rural, etc.). The recommendations of the report are therefore intended to keep the potential exposure to an absolute minimum with the knowledge that a zero exposure is not possible.

Asbestos containing materials have been used in a wide variety of applications. Of particular concern, is the group of so called friable products. A friable product is one that can be crumbled or reduced to powder or smaller fragments by hand pressure. Publications from the U.S.E.P.A. as early as 1977 have indicated the potential hazard of asbestos exposure in buildings containing these friable products. The two main uses of friable asbestos products are as spray insulation (thermal, acoustic or fireproofing) on deck and/or beams or as thermal insulation on piping or mechanical equipment. A large amount of non-friable asbestos-containing materials have also been used in building construction such as asbestos cement board and asbestos containing vinyl flooring.

The mere presence of a friable asbestos containing material does not imply that there is an actual presence of elevated airborne fiber. As numerous studies have indicated, elevated asbestos fiber

levels are generally found when settled dust or the actual asbestos containing material itself is disturbed by maintenance, renovation, inadvertent contact or vibration. The factors considered in the Environmental Protection Agency (USEPA) exposure assessment (condition of material, water damage, activity, movement, exposed surface area, accessibility, friability and presence in an air stream) often give some indication of the likelihood of fiber release but are not in any way definitive in determining whether a hazard exists or not. That is, even if the most friable product exists in a building, elevated fiber levels will not likely occur unless there is some disturbance by physical contact, vibration or an air stream. Also asbestos containing pipe or mechanical insulation is not considered friable unless the jacketing is deteriorated or is disturbed by maintenance or renovation.

There are four possible approaches to control exposure to airborne asbestos once a friable material is identified in a building. These methods briefly are as follows:

- A) Removal** - Asbestos material is removed and disposed of by burial and replaced by non-asbestos materials.
- B) Encapsulation** - Asbestos material is coated with a bridging or penetrating sealant.
- C) Enclosure** - Asbestos containing materials are separated from the building environment by physical airtight and waterproof barriers.
- D) Management and Custodial Control** - The Province of Saskatchewan Human Resources, Labor and Employment Branch under the Occupational health and Safety Regulations publish a document outlining "The Management of Asbestos".

6.0 REFERENCES

- .1 Province of Saskatchewan "The Occupational Health and Safety Act and The Occupational Health and Safety Regulations", December, 1996.
- .2 Province of Saskatchewan Human Resources, Labor, and Employment "The Management of Asbestos" January 1991.
- .3 USEPA, 1985. U.S. Environmental Protection Agency, "Guidance for Controlling Asbestos-Containing Materials in Buildings". Washington, DC: Office of Toxic Substances, USEPA.

APPENDIX I

BULK SAMPLE ANALYSIS

BERSCH & ASSOCIATES LTD.

May 17, 2007

City of Saskatoon
1101 Avenue P North
Saskatoon, SK
S7K 0J5

ATTENTION: Jim Greenshields

SUBJECT: Bulk Sample Analysis Report

Dear Mr. Greenshields,

Please find attached our laboratory's results for the bulk samples collected within TCU Place. The samples were analyzed in our laboratory for the identification of asbestos.

The results for the samples collected were obtained by examination in accordance with the current USEPA 600/R-93/116 Method for the analysis of asbestos in building materials using polarized light microscopy and dispersion staining techniques. The detection limit of this method is listed as less than 1% by volume.

This test report relates only to the materials sent for examination and any use or extension of the information by the client of these results is the responsibility of the client.

If any questions arise on the results of the attached information please contact me at 221-2100. Thank you for this opportunity of service to your firm.

Sincerely,

Brad Berschiminsky
Bersch & Associates Ltd.

File: S67BLE17

Bersch & Associates Ltd.

S67BAE17

361 Broad Street

Regina, Sask. S4R 1X2

BULK SAMPLE ANALYSIS REPORT**PROJECT NO. S67.07****CLIENT: TCU PLACE****35 - 22ND Street East, Saskatoon, SK.**

NO.	DATE	SAMPLE INFORMATION	ASBESTOS	%	OTHER	ANALYST
S67.01	29/9/2005	B1-Boiler Room Domestic hot water tank parging compound over fibreglass	Chrysotile	70	Glass Fibre N/F Material	WB
S67.02	29/9/2005	B1-Boiler Room DHW pipeline fitting on north wall adj. DHW tank	Chrysotile	80	N/F Material	WB
S67.03	29/9/2005	B1-Boiler Room Supply air fan FS-12 ductwork parging compound on east side of unit	Chrysotile	60	N/F Material	WB
S67.04	29/9/2005	B1-Boiler Room RHWS pipeline fitting on the east side of Fan FS-12	Chrysotile	70	N/F Material	WB
S67.05	29/9/2005	B1-Boiler Room CHWS pipeline fitting on the west side of Fan FS-12	Chrysotile	70	N/F Material	WB
S67.06	29/9/2005	B1-Boiler Room Spray-applied fireproofing inside the access panel on the vertical column at the north end of SA fan FS-1	Chrysotile	40	Mineral Wool N/F Material	WB
S67.07	29/9/2005	B1-Boiler Room Pipeline flange compound at cleanout on the south end of Fan FS-2	Chrysotile	60	N/F Material	WB
S67.08	29/9/2005	B1-Boiler Room HWR pipeline fitting between FS-2 and FS-3 at the south end	Chrysotile	20	Glass Fibre N/F Material	WB

N/F - Non Fibrous

Bersch & Associates Ltd.

S67BAE17

361 Broad Street

Regina, Sask. S4R 1X2

BULK SAMPLE ANALYSIS REPORT**PROJECT NO. S67.07****CLIENT: TCU PLACE****35 - 22ND Street East, Saskatoon, SK.**

NO.	DATE	SAMPLE INFORMATION	ASBESTOS	%	OTHER	ANALYST
S67.09	29/9/2005	B1-Boiler Room Pipeline valve compound at yellow hand valve adjacent the chilled water pump C-4	Chrysotile	70	N/F Material	WB
S67.10	29/9/2005	B1-Boiler Room Condensate pipeline fitting at the south end of FS-1	Chrysotile	60	N/F Material	WB
S67.11	29/9/2005	B1-Boiler Room Overhead ductwork parging compound between boilers #1 and #2	Chrysotile	70	N/F Material	WB
S67.12	29/9/2005	B1-Boiler Room Pipeline fitting along the south wall adjacent H.W. Circ. pump H-4	Chrysotile	10	Glass Fibre N/F Material	WB
S67.13	29/9/2005	B1-Boiler Room Pipeline fitting along the south wall adjacent H.W. Circ. pump H-3	Chrysotile	10	Glass Fibre N/F Material	WB
S67.14	29/9/2005	B1-Boiler Room Exposed pipeline fitting at cleanout along the south wall adjacent H.W. Circ. Pump H-2	Chrysotile	30	Glass Fibre N/F Material	WB
S67.15	29/9/2005	B1-Boiler Room Storm sewer transite drainpipe along the south wall adjacent boiler #2	Chrysotile Crocidolite	40 10	N/F Material	WB
S67.16	29/9/2005	B1-Boiler Room Boiler exhaust insulation along north wall in northwest corner of the room	Chrysotile	80	N/F Material	WB

N/F - Non Fibrous

Bersch & Associates Ltd.

S67BAE17

361 Broad Street

Regina, Sask. S4R 1X2

BULK SAMPLE ANALYSIS REPORT**PROJECT NO. S67.07****CLIENT: TCU PLACE****35 - 22ND Street East, Saskatoon, SK.**

NO.	DATE	SAMPLE INFORMATION	ASBESTOS	%	OTHER	ANALYST
S67.17	29/9/2005	B1-Boiler Room Boiler exhaust insulation beneath the grey parging on the west end of boiler #2	Amosite	30	Glass Fibre N/F Material	WB
S67.18	29/9/2005	B20-Electrical Room Overhead pipeline fitting in the southwest corner	Chrysotile	30	Glass Fibre N/F Material	WB
S67.19	29/9/2005	B20-Electrical Room Overhead pipeline fitting adjacent the east wall	Chrysotile	20	Glass Fibre N/F Material	WB
S67.20	29/9/2005	B21-Refridgeration Beige sheet floor covering with grey backing	Chrysotile	80	Vinyl N/F Material	WB
S67.21	30/9/2005	BS8-Stairwell Incandescent light fixture heat shield	Chrysotile	70	N/F Material	WB
S67.22	30/9/2005	B3-Storage HWHS pipeline fitting in northwest corner	Chrysotile	40	Glass Fibre N/F Material	WB
S67.23	30/9/2005	B2-Storage Pipeline fitting on radiant heat in northeast corner of room	Chrysotile	50	Glass Fibre N/F Material	WB
S67.24	30/9/2005	B32-West Fan Room CWS pipeline fitting on the north side of supply fan FS-10	Chrysotile	70	N/F Material	WB

N/F - Non Fibrous

Bersch & Associates Ltd.

S67BAE17

361 Broad Street

Regina, Sask. S4R 1X2

BULK SAMPLE ANALYSIS REPORT**PROJECT NO. S67.07****CLIENT: TCU PLACE****35 - 22ND Street East, Saskatoon, SK.**

NO.	DATE	SAMPLE INFORMATION	ASBESTOS	%	OTHER	ANALYST
S67.25	30/9/2005	B32-West Fan Room Duct expansion joint canvass on Fan FS-10	None		Glass Fibre Cellulose N/F Material	WB
S67.26	30/9/2005	B33-Bar Pipeline fitting above suspended ceiling above serving area	None		Glass Fibre N/F Material	WB
S67.27	30/9/2005	B30-Janitor 12" X 12" interlocking ceiling grid	None		Glass Fibre Cellulose N/F Material	WB
S67.28	30/9/2005	B30-Janitor 1' X 1' beige floor tile	None		Quartz Vinyl N/F Material	WB
S67.29	30/9/2005	3-First floor electrical room 1' X 1' cream/beige streak floor tile	None		Quartz Vinyl N/F Material	WB
S67.30	30/9/2005	4-Third floor mechanical Pipeline fitting along the east wall	Chrysotile	70	N/F Material	WB
S67.31	30/9/2005	1-Female washroom (3rd floor) Spray-applied fireproofing debris in privacy block wall adjacent sink	Chrysotile	30	Glass Fibre N/F Material	WB
S67.32	30/9/2005	G38-West Lobby Stipple ceiling texture	None		N/F Material	WB

N/F - Non Fibrous

Bersch & Associates Ltd.

S67BAE17

361 Broad Street

Regina, Sask. S4R 1X2

BULK SAMPLE ANALYSIS REPORT**PROJECT NO. S67.07****CLIENT: TCU PLACE****35 - 22ND Street East, Saskatoon, SK.**

NO.	DATE	SAMPLE INFORMATION	ASBESTOS	%	OTHER	ANALYST
S67.33	30/9/2005	112-Mezzanine White plaster material on the north wall	None		Cellulose N/F Material	WB
S67.34	30/9/2005	112-Mezzanine 12" X 12" acoustical wall tiles	None		Cellulose Mineral Wool N/F Material	WB
S67.35	30/9/2005	4-Spotlight room (3rd floor) 12" X 12" acoustical wall tiles	None		Cellulose Mineral Wool N/F Material	WB
S67.36	30/9/2005	4-Spotlight room (3rd floor) Pink ceiling plaster material	None		N/F Material	WB
S67.37	20/10/2005	B1.2-Sprinkler Overhead pipeline fitting along the north wall	Chrysotile	20	Glass Fibre N/F Material	WB
S67.38	20/10/2005	B1-Boiler Room Insulation on the west end of #2 boiler around the inspection glass port	Chrysotile Crocidolite	40 20	N/F Material	WB
S67.39	20/10/2005	B2-Storage Fireproofing debris in northeast corner on 2' X 4' ledge	Chrysotile	40	Mineral Wool N/F Material	WB
S67.40	20/10/2005	BS5-Stairwell Small pipeline fitting on abandon pipeline beneath stairwell	Chrysotile	20	Glass Fibre N/F Material	WB

N/F - Non Fibrous

Bersch & Associates Ltd.

S67BAE17

361 Broad Street

Regina, Sask. S4R 1X2

BULK SAMPLE ANALYSIS REPORT**PROJECT NO. S67.07****CLIENT: TCU PLACE****35 - 22ND Street East, Saskatoon, SK.**

NO.	DATE	SAMPLE INFORMATION	ASBESTOS	%	OTHER	ANALYST
S67.41	20/10/2005	B100-Corridor Small pipeline fitting adjacent BS5 stairwell door	Chrysotile	30	Glass Fibre N/F Material	WB
S67.42	20/10/2005	B100-Corridor Pipeline fitting adj. blue fire-doors adj. BS5 stairwell	Chrysotile	30	Glass Fibre N/F Material	WB
S67.43	20/10/2005	B3-Storage Overhead HWHS1FL pipeline fitting above suspended wagon wheel	Chrysotile	20	Glass Fibre N/F Material	WB
S67.44	20/10/2005	B15-Dishwash Board on the ductwork above the suspended ceiling	Amosite	30	N/F Material	WB
S67.45	20/10/2005	B19-Storage Overhead pipeline fitting	Chrysotile	60	Glass Fibre N/F Material	WB
S67.46	20/10/2005	B21-Refridgeration 2' X 2' suspended ceiling tiles	None		Cellulose Glass Fibre/Mineral Wool N/F Material	WB
S67.47	20/10/2005	B100-Corridor Small pipeline fitting above the suspended ceiling adjacent room B18	Chrysotile	20	Glass Fibre N/F Material	WB
S67.48	20/10/2005	B100-Corridor CHWSFS14 pipeline fitting within the ceiling space above the ductwork adjacent room B18	Chrysotile	70	N/F Material	WB

N/F - Non Fibrous

Bersch & Associates Ltd.

S67BAE17

361 Broad Street

Regina, Sask. S4R 1X2

BULK SAMPLE ANALYSIS REPORT**PROJECT NO. S67.07****CLIENT: TCU PLACE****35 - 22ND Street East, Saskatoon, SK.**

NO.	DATE	SAMPLE INFORMATION	ASBESTOS	%	OTHER	ANALYST
S67.49	20/10/2005	B100-Corridor HWHRFS14 pipeline fitting within the ceiling space above the ductwork adjacent room B18	Chrysotile	70	N/F Material	WB
S67.50	20/10/2005	B22-Kitchen DCW pipeline fitting on foil-faced pipeline in the southeast corner above the suspended ceiling	Chrysotile	70	N/F Material	WB
S67.51	20/10/2005	B23-Kitchen Pipeline fitting above suspended ceiling at entry	Chrysotile	20	Glass Fibre N/F Material	WB
S67.52	20/10/2005	B24-Regency Hall 'A' Pipeline fitting above suspended ceiling in the southwest corner adjacent the overhead door	Chrysotile	30	Glass Fibre N/F Material	WB
S67.53	20/10/2005	B24-Regency Hall 'A' Pipeline fitting above suspended ceiling in the southwest corner adjacent the overhead door	Chrysotile	30	Glass Fibre N/F Material	WB
S67.54	20/10/2005	MS8-Stairwell Small HWHR pipeline fitting on the landing adjacent the pop dispenser	Chrysotile	20	Glass Fibre N/F Material	WB
S67.55	20/10/2005	B11-Technical 1' X 1' black/white spec floor tile	None		Vinyl Quartz N/F Material	WB
S67.56	20/10/2005	112-Mezzanine Floor Perforated panel board on the south wall	Chrysotile	40	N/F Material	WB

N/F - Non Fibrous

Bersch & Associates Ltd.

S67BAE17

361 Broad Street

Regina, Sask. S4R 1X2

BULK SAMPLE ANALYSIS REPORT**PROJECT NO. S67.07****CLIENT: TCU PLACE****35 - 22ND Street East, Saskatoon, SK.**

NO.	DATE	SAMPLE INFORMATION	ASBESTOS	%	OTHER	ANALYST
S67.57	20/10/2005	113-Mezzanine Floor 1' X 1' cream/lt brown streak floor tile	Chrysotile	1 to 5	Quartz Vinyl N/F Material	WB
S67.58	20/10/2005	111-Mezzanine Floor Spray-applied fireproofing along the west wall at four-foot level on the horizontal enclosed structural steel	Chrysotile	20	Mineral Wool N/F Material	WB
S67.59	20/10/2005	B32-West Fan Room Overhead hot water return pipeline fitting adjacent entry	Chrysotile	60	N/F Material	WB
S67.60	20/10/2005	B32-West Fan Room Ductwork parging compound on the side of FS10 basement supply air handling unit	Chrysotile	60	N/F Material	WB
S67.61	20/10/2005	B32-West Fan Room HWR pipeline fitting adjacent the west light along the north wall	Chrysotile	70	N/F Material	WB
S67.62	26/10/2005	B27-Regency Lobby Beige sheet flooring adjacent the elevator room area	None		Cellulose Vinyl N/F Material	WB
S67.63	26/10/2005	G44-Women's washroom Spray-applied fireproofing above supplied air grille along the east wall	None		Glass Fibre Mineral Wool N/F Material	WB
S67.64	26/10/2005	9-Sound controls 2nd floor 1' X 1' acoustical wall tile with pinhole pattern	None		Cellulose Mineral Wool N/F Material	WB

N/F - Non Fibrous

Bersch & Associates Ltd.

S67BAE17

361 Broad Street

Regina, Sask. S4R 1X2

BULK SAMPLE ANALYSIS REPORT**PROJECT NO. S67.07****CLIENT: TCU PLACE****35 - 22ND Street East, Saskatoon, SK.**

NO.	DATE	SAMPLE INFORMATION	ASBESTOS	%	OTHER	ANALYST
S67.65	26/10/2005	4-Men's washroom 2nd floor 1' X 1' ceiling tile	None		Cellulose N/F Material	WB
S67.66	26/10/2005	11-Recording & Broadcasting 2nd floor Ductwork parging compound on mezzanine	Chrysotile	70	N/F Material	WB
S67.67	26/10/2005	12-Storage 2nd floor Boiler exhaust stack insulation adjacent 13 workshop	Chrysotile	80	N/F Material	WB
S67.68	26/10/2005	1S7-Stairwell Small pipeline fitting along the east wall	Chrysotile	20	Glass Fibre Mineral Wool N/F Material	WB
S67.69	26/10/2005	G55-Janitor Pipeline fitting along east wall adjacent ductwork G47-Green Room	Chrysotile	20	Glass Fibre Mineral Wool N/F Material	WB
S67.70	26/10/2005	2nd layer of ceiling tile beneath the 1' X 1' ceiling tile above the suspended ceiling adjacent the bar	None		Cellulose Mineral Wool N/F Material	WB
S67.71	07/11/05	B24-Regency Hall 'A' Grey & white corlon sheet floor covering	None		Cellulose Vinyl N/F Material	WB
S67.72	07/11/05	B24-Regency Hall 'A' Peach color parging on the ductwork above the suspended ceiling	None		N/F - Non Fibrous	WB

N/F - Non Fibrous

Bersch & Associates Ltd.

S67BAE17

361 Broad Street

Regina, Sask. S4R 1X2

BULK SAMPLE ANALYSIS REPORT**PROJECT NO. S67.07****CLIENT: TCU PLACE****35 - 22ND Street East, Saskatoon, SK.**

NO.	DATE	SAMPLE INFORMATION	ASBESTOS	%	OTHER	ANALYST
S67.73	07/11/05	G40-Lounge 'C' Fireproofing above the suspended ceiling at the northeast corner of the bar area	None		Glass Fibre Mineral Wool N/F Material	WB
S67.74	07/11/05	G40-Lounge 'C' Small pipeline fitting above the suspended ceiling at the northeast corner of the bar area	Chrysotile	30	Glass Fibre N/F Material	WB
S67.75	07/11/05	G43-MEN Fireproofing above the drywall enclosed ceiling on the structural steel at the decking surface	Chrysotile	40	Glass Fibre Mineral Wool N/F Material	WB
S67.76	17/2/2007	G-46-East Lounge Textured coat on ceiling adjacent to the door leading to G-100 corridor adjacent storage room	None		N/F Material	WB
S67.77	28/3/2007	First floor 18- Rehearsal Room Wall parging on diagonal structure on north wall	None		N/F Material	WB
S67.78	28/3/2007	First floor 18- Rehearsal Room Small pipeline fitting in northeast corner of room	None		Glass Fibre N/F Material	WB
S67.79	28/3/2007	First floor 18- Rehearsal Room Acoustic wall tile at northeast corner of room	None		Cellulose N/F Material	WB
S67.80	28/3/2007	G33- Ceiling area Duct work parging material directly in from 3S6	None		N/F Material	WB

N/F - Non Fibrous

Bersch & Associates Ltd.

S67BAE17

361 Broad Street

Regina, Sask. S4R 1X2

BULK SAMPLE ANALYSIS REPORT**PROJECT NO. S67.07****CLIENT: TCU PLACE****35 - 22ND Street East, Saskatoon, SK.**

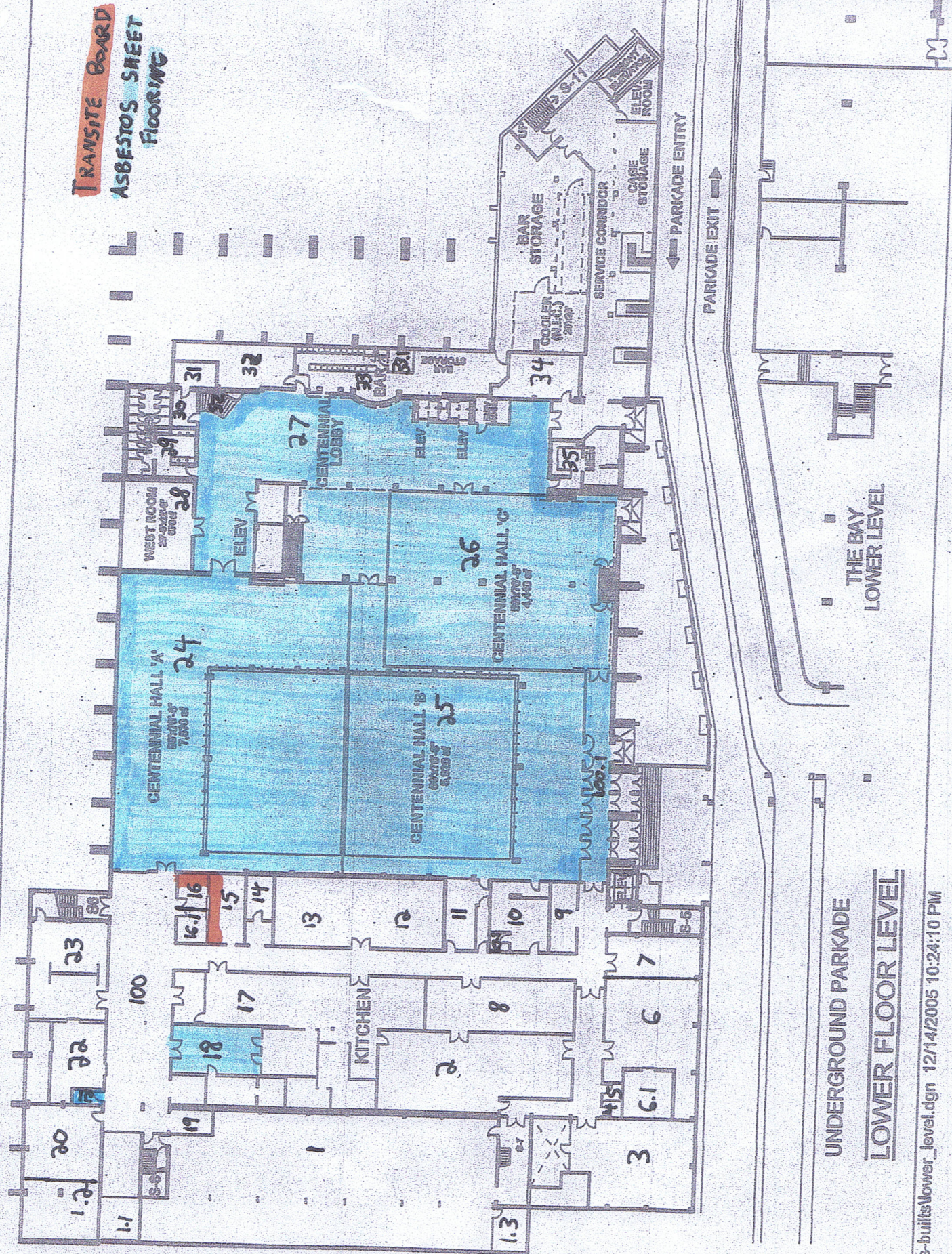
NO.	DATE	SAMPLE INFORMATION	ASBESTOS	%	OTHER	ANALYST
S67.81	02/04/07	B100.1- Corridor Lower layer of sheet flooring	None		Vinyl N/F Material	WB
S67.82	02/04/07	B100.1- Corridor Second layer of sheet flooring, Two tone brown squares	Chrysotile	40	Vinyl N/F Material	WB
S67.83	02/04/07	B100.1- Corridor Top layer of sheet flooring, Grey and white checkered pattern running along the east side of corridor	None		Vinyl N/F Material	WB
S67.84	02/04/07	B100.1- Corridor Sheet flooring, multi- colored flake pattern	None		Vinyl N/F Material	WB

N/F - Non Fibrous

APPENDIX II

FLOOR PLAN

TRANSITE BOARD
ASBESTOS SHEET
Flooring



UNDERGROUND PARKADE

LOWER FLOOR LEVEL

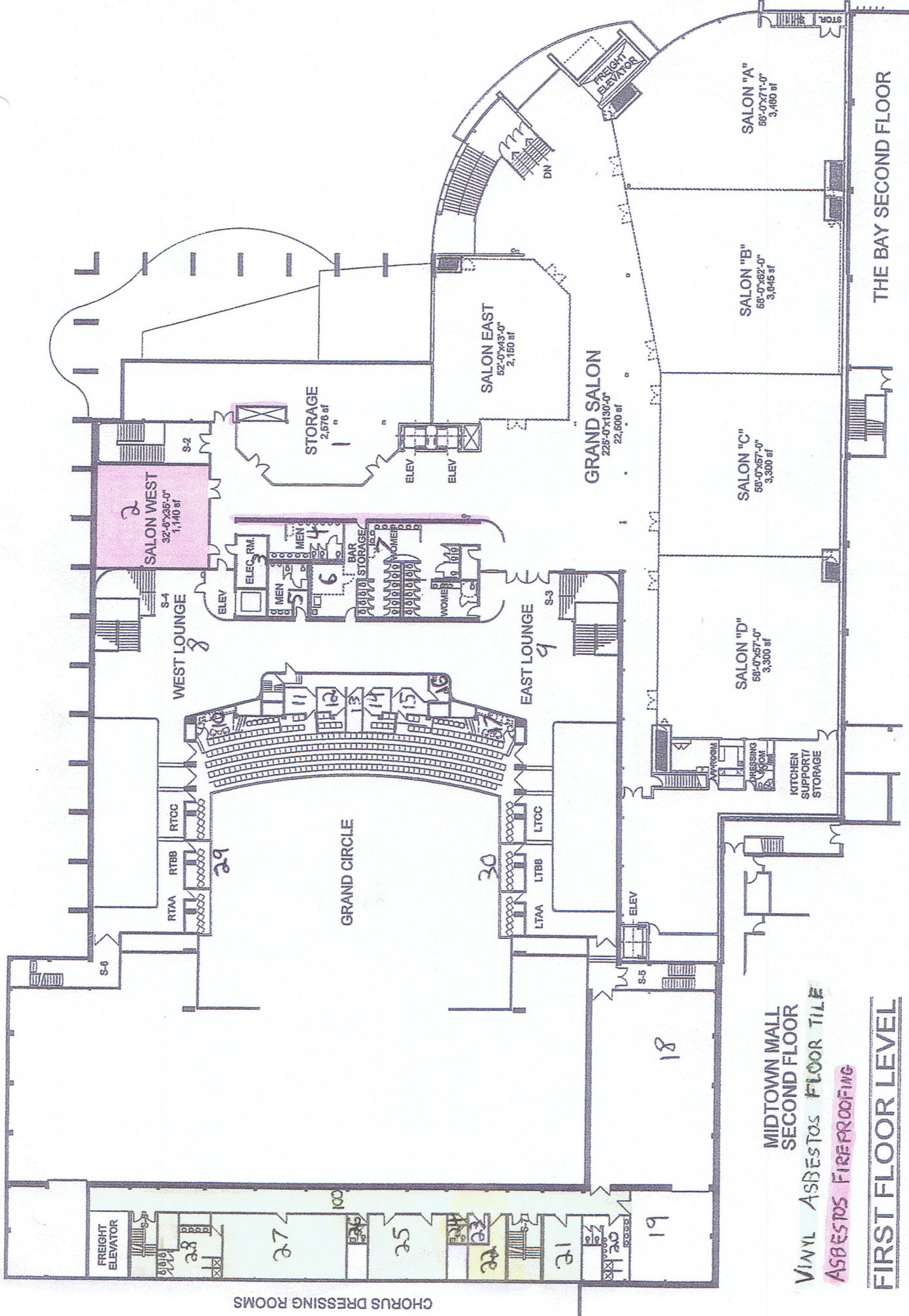
...las-builtslower_level.dgn 12/14/2005 10:24:10 PM

22nd STREET



VINYL ASBESTOS FLOOR TILE
ASBESTOS FIREPROOFING

GROUND FLOOR LEVEL

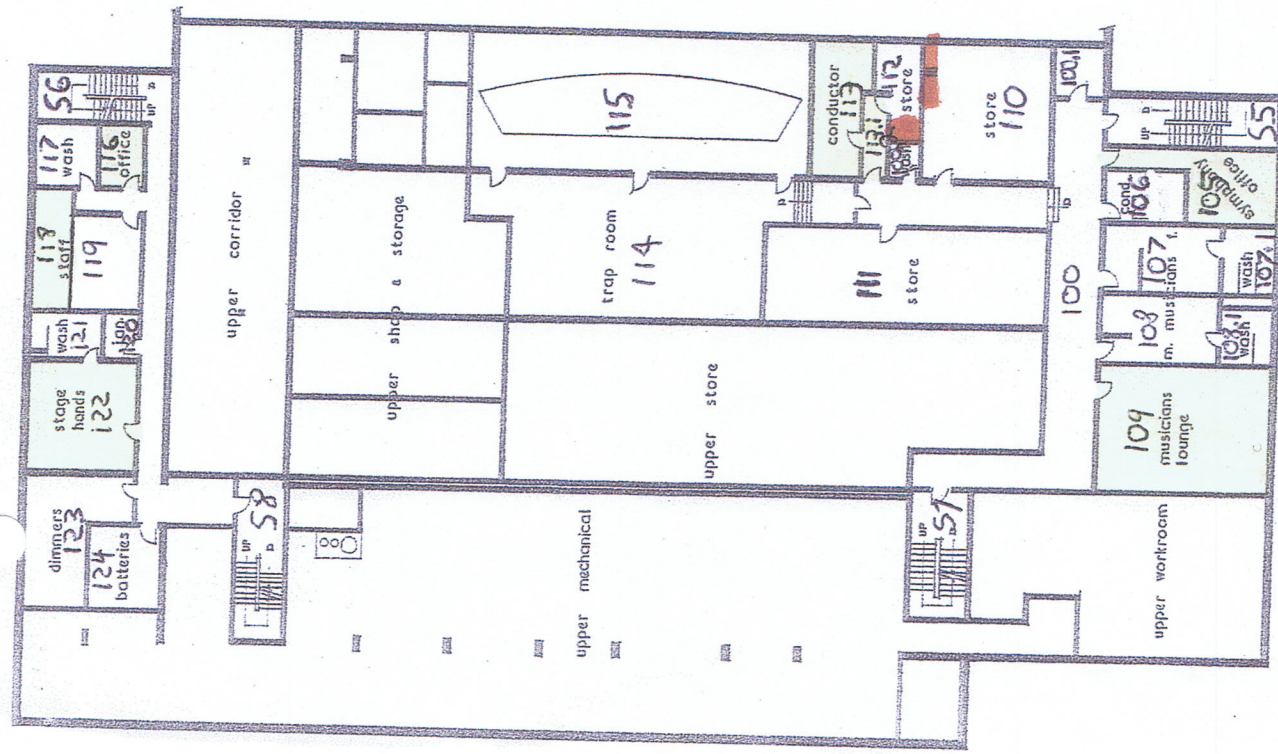


MIDTOWN MALL
SECOND FLOOR

VINYL ASBESTOS FLOOR TILE

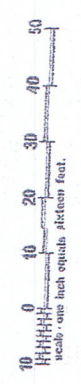
ASBESTOS FIREPROOFING

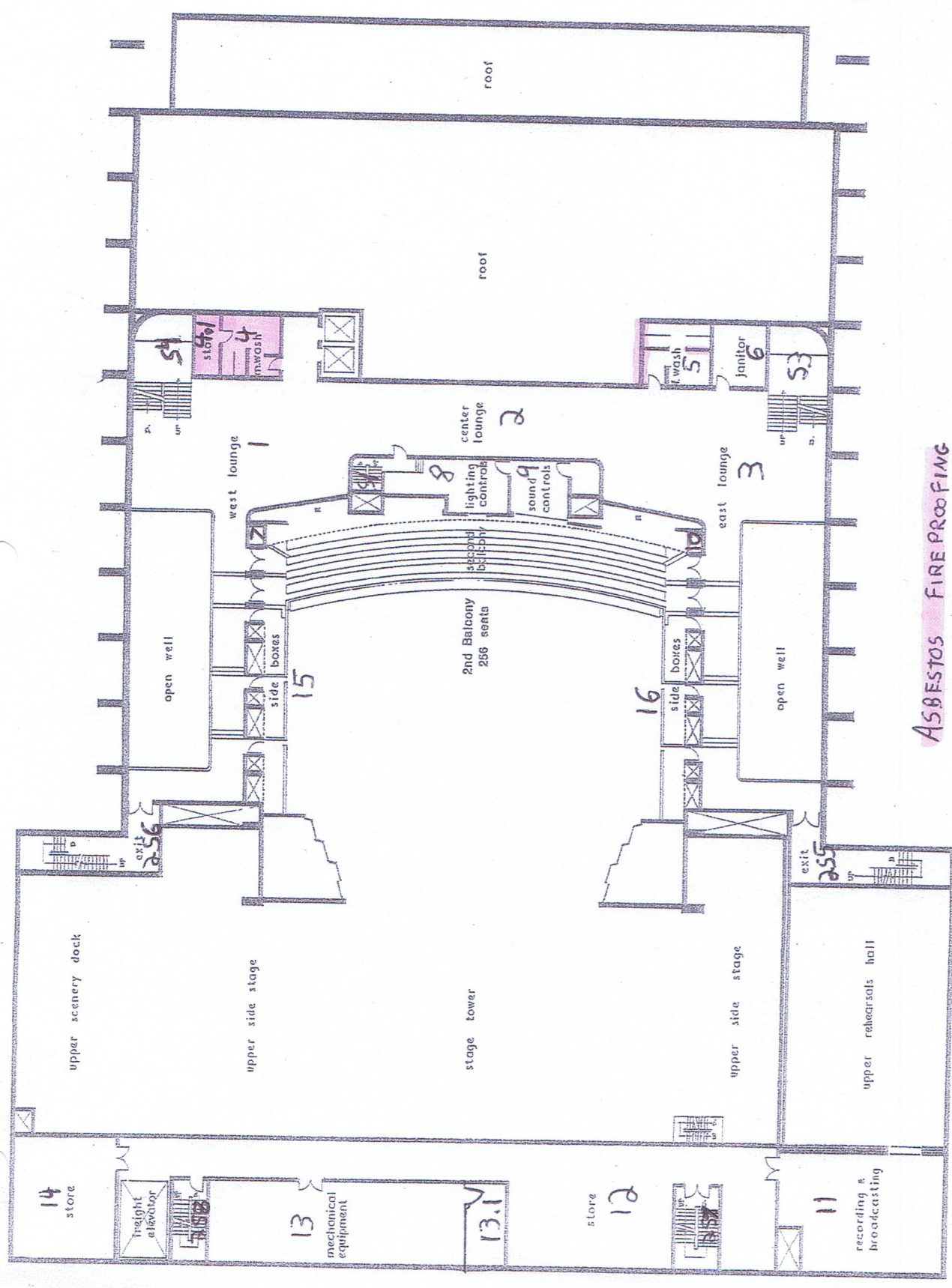
FIRST FLOOR LEVEL



VINYL ASBESTOS Floor TILE
TRANSITE BOARD

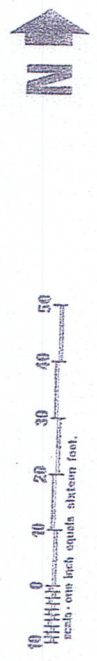
SASKATOON CENTENNIAL AUDITORIUM MEZZANINE FLOOR PLAN

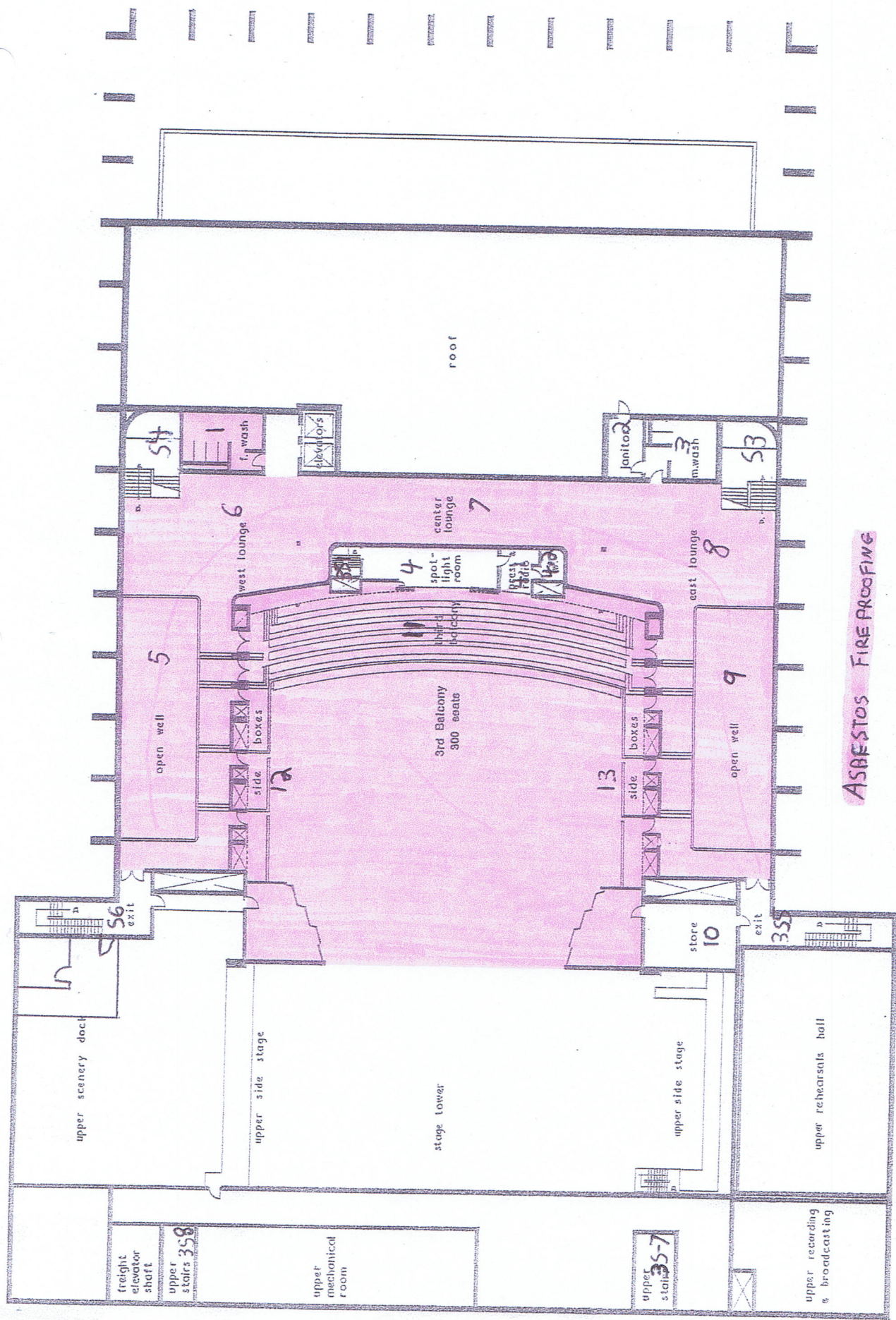




ASBESTOS FIRE PROOFING

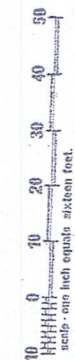
SASKATOON CENTENNIAL AUDITORIUM SECOND FLOOR PLAN





ASBESTOS FIRE PROOFING

SASKATOON CENTENNIAL AUDITORIUM THIRD FLOOR PLAN



BERSCH

CONSULTING LTD.

PRE-RENOVATION ASSESSMENT

February 6, 2017

CLIENT: City of Saskatoon
222 3rd Avenue N
Saskatoon, SK
S7K 0J5

ATTENTION: Nathan Sommerfeld

PROJECT: TCU Place – 35 22nd Street East – Investigation of Box Office for Renovations

FILE NUMBER: B67PRB01H

Evan Westad of Bersch Consulting Ltd. conducted a site visit on February 1, 2018, to TCU Place located at 35 22nd Street E, Saskatoon, Saskatchewan. The purpose of the visit was to investigate and collect bulk samples to determine the presence/absence of asbestos. Six (6) bulk samples were collected and analyzed for the identification of asbestos. Asbestos **was not** detected within the samples.

The results for the bulk samples were obtained by examination in accordance with the current USEPA 600/R-93/116 Method for the analysis of asbestos in building materials using polarized light microscopy and dispersion staining techniques. The detection limit of this method is listed as less than 1% by volume. This test report relates only to the materials sent for examination and any use or extension of the information by the client of these results is the responsibility of the client. Please reference Appendix I for the bulk analysis results.

SITE OBSERVATION AND INFORMATION:

The scope of this investigation included three (3) rooms within the Box Office area; the electrical room, the box office washroom and the medical room. The floor tile throughout all three rooms is the same 3-tone grey 12"x12" floor tile overlaying leveling compound and concrete. Samples of floor tile and leveling compound were collected for analysis. All walls are steel stud walls finished with drywall. Drywall mud compound was sampled from each of the three rooms and submitted for analysis. The bathroom wall(s) and ceiling space are insulated with fiberglass insulation. The ceiling of the three rooms is finished and painted drywall. A small hole was cut in the ceiling in the electrical room in order to investigate the ceiling space above this area. No asbestos concerns were noted in the area adjacent this location.

Bersch Consulting was escorted to the basement in order to identify the plumbing associated with this area. The plumbing was not definitively identified; however, no concerns were noted involving the plumbing in the suspected area.

Based on observations during the site visit and the results of bulk sampling, there is no asbestos concern regarding the proposed renovations within the box office area.

If any questions arise on the results of the attached information, please contact me our office at 306.978.6665. Thank you for this opportunity of service.

Sincerely,

A handwritten signature in black ink, appearing to read 'Evan Westad', with a stylized, cursive script.

Evan Westad
Bersch Consulting Ltd.
File No.: B67PRB01H – TCU Box Office

SITE PHOTOS

PHOTO 1 – Electrical Room Floor- Floor Tile Removed



PHOTO 2 – Box Office Washroom- Wall Access Showing Fiberglass Insulation



PHOTO 3 – Box Office Washroom Ceiling Space- Fiberglass Insulation



PHOTO 4 – Electrical Room Ceiling Space



APPENDIX I

BULK SAMPLE ANALYSIS

Bersch Consulting Ltd.

B67BAB01H

244-2002 Quebec Avenue
Saskatoon, SK S7K 1W4**BULK SAMPLE ANALYSIS REPORT****PROJECT NO: B67.18****CLIENT: CITY OF SASKATOON****CONTACT: NATHAN SOMMERFELD****LOCATION: TCU PLACE**

NO.	DATE	SAMPLE INFORMATION	ASBESTOS	%	ANALYST
1	1-Feb-18	Medical Room Adjacent Box Office- Leveling Compound under Floor Tile	No Asbestos Detected		WB/EMSL
2	1-Feb-18	Medical Room Adjacent Box Office- Drywall Mud Compound	No Asbestos Detected		WB/EMSL
3	1-Feb-18	Box Office Washroom- Drywall Mud Compound	No Asbestos Detected		WB/EMSL
4	1-Feb-18	Box Office Washroom- Ceiling Space- Fiberglass Insulation	No Asbestos Detected		WB/EMSL
5	1-Feb-18	Box Office Electrical Room- Drywall Mud Compound	No Asbestos Detected		WB/EMSL
6	1-Feb-18	Box Office Electrical Room- 3-tone 12"x12" Gray Floor Tile	No Asbestos Detected		WB/EMSL

BERSCH & ASSOCIATES LTD.

November 9th, 2016

The City of Saskatoon
222 3rd Avenue North
Saskatoon, SK
S7K 0J5

ATTENTION: Hazel Fernandez

SUBJECT: Bulk Sample Analysis Report

Please find attached our laboratory's results for the bulk samples collected November 7th, 2016 from TCU Place - Mezzanine located in Saskatoon, SK. The samples were analyzed in our laboratory for the identification of asbestos. Asbestos **was** detected within the samples.

The results for the samples submitted were obtained by examination in accordance with the current USEPA 600/R-93/116 Method for the analysis of asbestos in building materials using polarized light microscopy and dispersion staining techniques. The detection limit of this method is listed as less than 1% by volume.

This test report relates only to the materials sent for examination and any use or extension of the information by the client of these results is the responsibility of the client.

If any questions arise on the results of the attached information please contact our office. Thank you for this opportunity of service!

Sincerely,



Brad Berschiminsky
Bersch & Associates Ltd.

File No. – B67BLK07F – TCU Mezz

Bersch & Associates Ltd.

B67BAK07F

244-2002 Quebec Avenue
Saskatoon, SK S7K 1W4

BULK SAMPLE ANALYSIS REPORT**PROJECT NO: B67.16****CLIENT: CITY OF SASKATOON****CONTACT: HAZEL FERNANDEZ****LOCATION: TCU PLACE - MEZZANINE**

NO.	DATE	SAMPLE INFORMATION	ASBESTOS	%	ANALYST
1	7-Nov-16	Mezzanine - Parging On Beam On South Wall	No Asbestos Detected		WB
2	7-Nov-16	Mezzanine - Insulation Resting On Beam Below Conduit On East Wall	Chrysotile	25%	WB

BERSCH & ASSOCIATES LTD.

November 2, 2016

City of Saskatoon
Facilities & Fleet Management
3130 Laurier Drive
Saskatoon, SK
S7L 5J7

ATTENTION: Darrell Wasylowich

SUBJECT: Bulk Sample Analysis Report TCU West Canopies

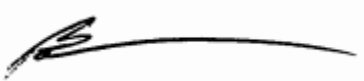
Please find attached our laboratory's results for the bulk samples collected October 13, 2016 from TCU Place, Saskatoon, SK. The roof membrane was sampled for the identification of asbestos. Refer to the attached photo. Asbestos **was not** detected within the samples.

The results for the samples submitted was obtained by examination in accordance with the current USEPA 600/R-93/116 Method for the analysis of asbestos in building materials using polarized light microscopy and dispersion staining techniques. The detection limit of this method is listed as less than 1% by volume.

This test report relates only to the materials sent for examination and any use or extension of the information by the client of these results is the responsibility of the client.

If any questions arise on the results of the attached information, please contact our office. Thank you for this opportunity of service!

Sincerely,



Brad Berschiminsky
Bersch & Associates Ltd.

File No. – B67BLJ13F

BULK SAMPLE LOCATION

Looking Downward At The Roof Surface – Cored Thru To Metal Decking



Top layer of asphalt roof membrane, tar layer, fibre board and metal decking.

BERSCH & ASSOCIATES LTD.

August 8, 2005

City of Saskatoon
1101 Avenue P North
Saskatoon, SK
S7K 0J5

ATTENTION: Jim Greenshields

SUBJECT: Bulk Sample Analysis Report

Dear Mr. Greenshields,

Please find attached our laboratory's results for the spray-applied fireproofing samples collected from the Centennial Auditorium on Saturday August 6, 2005. The samples were analyzed in our laboratory for the identification of asbestos.

The results for the bulk sample were obtained by examination in accordance with the current U.S. 40 CFR Part 763, Vol. 52, No.210 for the analysis of asbestos in building materials using polarized light microscopy and dispersion staining techniques. The detection limit for this method is listed as greater than 1%.

This test report relates only to the materials sent for examination and any use or extension of the information by the client of these results is the responsibility of the client.

If any questions arise on the results of the attached information please contact our office. Thank you for this opportunity of service to your firm.

Sincerely,

Trent Blaus
Bersch & Associates Ltd.

File: S67BLH6

Bersch & Associates Ltd.

361 Broad Street,
Regina, Sk. S4R 1X2

PROJECT NO. S67.05

**CLIENT: CITY OF SASKATOON
CENTENNIAL AUDITORIUM**

BULK SAMPLE ANALYSIS REPORT

NO.	DATE	SAMPLE INFORMATION	ASBESTOS	%	OTHER	ANALYST
1	08/06/05	Level 1 Fireproofing in northeast stairwell at inspection hole in the south wall	Chrysotile	40	Glass Fibre Mineral Wool N/F Material	WB
2	08/06/05	Main Level Fireproofing at northeast stairwell on north/south structural beam overhead	None		Glass Fibre Mineral Wool N/F Material	WB
3	08/06/05	Main Level Fireproofing within ceiling space of men's washroom adj. security/electrical room	Chrysotile	40	Glass Fibre Mineral Wool N/F Material	WB

BERSCH & ASSOCIATES LTD.

July 24, 2005

City of Saskatoon
1101 Avenue P North
Saskatoon, SK
S7K 0J5

ATTENTION: Rob Tomiyama

SUBJECT: Bulk Sample Analysis Report

Dear Mr. Tomiyama,

Please find attached our laboratory's results for the four bulk samples collected within the Basement Level of the Centennial Auditorium and Convention Centre, July 23, 2005. The samples were analyzed in our laboratory for the identification of asbestos. Chrysotile asbestos identified in all four samples submitted for analysis.

The results for the bulk samples collected were obtained by examination in accordance with the current U.S. 40 CFR Part 763, Vol. 52, No. 210 for the analysis of asbestos in building materials using polarized light microscopy and dispersion staining techniques. The detection limit for this method is listed as greater than 1%.

This test report relates only to the materials sent for examination and any use or extension of the information by the client of these results is the responsibility of the client.

If any questions arise on the results of the attached information please contact our office. Thank you for this opportunity of service to your firm.

Sincerely,

Clint Berschiminsky
Bersch & Associates Ltd.

File: S67BLG24

Bersch & Associates Ltd.

361 Broad Street

Regina, Sask. S4R 1X2

BULK SAMPLE ANALYSIS REPORT**PROJECT NO. S67.05****CLIENT: CITY OF SASKATOON****CENTENNIAL AUDITORIUM**

NO.	DATE	SAMPLE INFORMATION	ASBESTOS	%	OTHER	ANALYST
1	7/23/2005	Centennial Auditorium Bsmt. Level, Fan Room Northeast Debris on Fan FS 11 Ducting Adjacent Expansion Joint	Chrysotile	70	N/F Material	WB
2	7/23/2005	Centennial Auditorium Bsmt. Level, Fan Room Northeast South Side of Fan FS 11 Exposed Valve Flange Compound	Chrysotile	40	Glass Fibre Mineral Wool N/F Material	WB
2	7/23/2005	Centennial Auditorium Bsmt. Level, Fan Room Northeast Northwest Corner of Fan Room Pipe Elbow Parging Compound	Chrysotile	70	N/F Material	WB
4	7/23/2005	Centennial Auditorium, Bsmt. Level Lobby Adj. Men's Washroom N.E. Above Suspended Ceiling System Pipe Elbow Compound	Chrysotile	50	Glass Fibre Mineral Wool N/F Material	WB

N/F - Non Fibrous

BERSCH & ASSOCIATES LTD.

January 15, 2004

City of Saskatoon
Infrastructure Services Department
1101 Avenue P North
Saskatoon, SK S7L 7K6

Attention: Rob Tomiyama

SUBJECT: Bulk Material Identification Report

Dear Mr. Tomiyama,

Please find attached our laboratory's results for three bulk samples collected from the Centennial Auditorium, Basement Level, Electrical Room B27, January 8, 2004. The samples were sent to our Regina Laboratory for the identification of asbestos. No asbestos detected in any of the samples collected for analysis.

The results for the bulk samples collected were obtained by examination in accordance with the current U.S. 40 CFR Part 763, Vol. 52, No. 210 for the analysis of asbestos in building materials using polarized light microscopy and dispersion staining techniques. The detection limit of this method is listed as <1%.

This report relates only to the materials submitted for examination and any use or extension of the information by the client of these results is the responsibility of the client.

If any questions arise on the results of the attached information, please contact our office. Thank you for this opportunity of service to your firm.

Sincerely,

Clint Berschiminsky
Bersch & Associates Ltd.
S67BLI30

361 BROAD STREET, REGINA, SK, S4R 1X2 Ph: (306) 757-6665 Fax: (306) 757-6664

Bersch & Associates Ltd.

361 Broad Street

Regina, Sask. S4R 1X2

BULK SAMPLE ANALYSIS REPORT**PROJECT NO. S67.04****CLIENT: CITY OF SASKATOON****CENTENNIAL AUDITORIUM**

NO.	DATE	SAMPLE INFORMATION	ASBESTOS	%	OTHER	ANALYST
1	1/8/2004	Centennial Auditorium Bsmt. Level Electrical Room B27 Steam Line Along East Wall Pipe Elbow Compound	None		Glass Fibre Mineral Wool N/F Material	WB
2	1/8/2004	Centennial Auditorium Bsmt. Level Electrical Room B27 Domestic Water Line Pipe Elbow Compound	None		Glass Fibre Mineral Wool N/F Material	WB
3	1/8/2004	Centennial Auditorium Bsmt. Level Electrical Room B27 South Wall Above Sump Pit Condensate Return Piping Pipe Elbow Compound	None		Glass Fibre Mineral Wool N/F Material	WB

N/F - Non Fibrous

APPENDIX III

DATA SPREADSHEET

TCU PLACE			BERSCH & ASSOCIATES LTD.													
	Room		Sample Data									Functional Area		Potential for	Recommended	
Floor	Number	Use	Locations	Sample ID	Date DD/MM/YY	Asbestos Type	% of Asbestos	Tradename ACM Product	Condition	Priority	Description of Sample Location	Label	Containing Asbestos	Disturbance	Action	Comments
B	1	BOILER	Sample	S67-ASB1	29/9/2005	Chrysotile	70%	Parging Material	Poor	1	B1-Domestic hot water tank parging compound over fibreglass	Yes	2-Yellow - Asbestos on visible piping and/or ducting	Mod/High	Repair	Repair the areas where holes were drilled through the tank insulation and HEPA vacuum the floor surrounding the tank.
B	1	BOILER	Sample	S67-ASB2	29/9/2005	Chrysotile	80%	Pipeline Fitting Compound	Poor/Mod	1	B1-DHW pipeline fitting on north wall adj. DHW tank	Yes	2-Yellow - Asbestos on visible piping and/or ducting	Moderate	Remove	Remove 1 fitting in the northeast corner behind the exit door on the east side of the room
B	1	BOILER	Sample	S67-ASB3	29/9/2005	Chrysotile	60%	Parging Material	Poor/Mod	1	B1-Supply air fan FS-12 ductwork parging compound on east side of unit	Yes	2-Yellow - Asbestos on visible piping and/or ducting	Moderate	Repair	Repair the area on the ductwork at the sample location. HEPA vacuum the floor space below the damaged canvass jacketing. Repair the canvass on the overhead ductwork adj. S4.FR-6 EA. Repair the canvass jacketing between FS1 & FS2.
B	1	BOILER	Sample	S67-ASB4	29/9/2005	Chrysotile	70%	Pipeline Fitting Compound	Poor/Mod	1	B1-RHWS pipeline fitting on the east side of fan FS-12	Yes	2-Yellow - Asbestos on visible piping and/or ducting	Moderate	Repair/Remove	Remove the insulation on 1 flange assembly on the east side of FS-1 (to the south of the HWT). Repair 2 butterfly valves on the CHWS pipeline, on the east side of FS-1. Remove 1 small fitting on the west side of the HWT along the north wall and dispose of the fitting material lying on the pipeline above. Repair 2 fittings on the west side of S.A. unit system FS-6 Dressing Room. Remove the insulation to 1 valve assembly and repair 1 fitting on the north side of the same unit as above. Remove 1 fitting at floor level to the right of the workshop doorway. Repair the valve assembly insulation on the CHWSFS6 pipeline to the south of the work bench to the west of the Vacuum Producer. Repair 1 flange on the west side of FS1 towards the back of the unit.
B	1	BOILER	Sample	S67-ASB5	29/9/2005	Chrysotile	70%	Pipeline Fitting Compound	Good	3	B1-CHWS pipeline fitting on the west side of fan FS-12	Yes	2-Yellow - Asbestos on visible piping and/or ducting	Low	Manage	
B	1	BOILER	Sample	S67-ASB6	29/9/2005	Chrysotile	40%	Fireproofing	Poor/Mod	1	B1-Spray-applied fireproofing inside the access panel on the vertical column at the north end of SA fan FS-1	Yes	3-Yellow - Asbestos fireproofing on the structural columns	Moderate	Repair	Close up the drywall cut-out behind SF3 on the vertical structural column. HEPA vacuum the service boxes, inside all access doors on the vertical columns along the north wall. HEPA vacuum the fireproofing debris above the ductwork to the north of #2 boiler. The fireproofing is present throughout the room on the vertical and horizontal structural columns enclosed in drywall.

TCU PLACE			BERSCH & ASSOCIATES LTD.														
			Sample Data														
Floor	Room Number	Use	Locations	Sample ID	Date DD/MM/YY	Asbestos Type	% of Asbestos	Tradename ACM Product	Condition	Priority	Description of Sample Location	Label	Functional Area Containing Asbestos	Potential for Disturbance	Recommended Action	Comments	
B	1	BOILER	Sample	S67-ASB7	29/9/2005	Chrysotile	60%	Pipeline Fitting Compound	Good	3	B1-Pipeline flange compound at cleanout on the south end of fan FS-2	Yes	2-Yellow - Asbestos on visible piping and/or ducting	Low	Manage		
																Repair the damaged fitting where the sample was taken. Remove 5 flange assemblies and 1 fitting on the west side of FS2 unit on the chilled hot water return & supply lines. Remove the valve insulation on the RHWS pipeline at the northeast corner of FS3 unit. Remove the valve assembly insulation from 2 valves, repair 4 fittings and remove 1 fitting on the northwest corner of SF3. Repair 2 overhead fittings and remove the insulation from 1 valve assembly between SF3 & SF4. Repair the valve assembly between SF4 & SF5.	
B	1	BOILER	Sample	S67-ASB8	29/9/2005	Chrysotile	20%	Pipeline Fitting Compound	Poor/Mod	1	B1-HWR pipeline fitting between FS-2 and FS-3 at the south end of the room	Yes	2-Yellow - Asbestos on visible piping and/or ducting	Moderate	Repair/Remove	Repair 2 butterfly valves on the chilled water pump C-5 pipeline. Repair/remove the insulation from the valve assembly, flange and fitting on the Reheat Circ. Pump H-6, east of #1 boiler. Repair 1 large valve assembly in the southeast corner of SF3 adj. the water softener. Repair the side of 1 large gate valve on the Chilled Water Circ Pump C-6 along the south wall. Remove the flange/valve assembly insulation on the Chilled Water Pump C-1 system FS-6 along the south wall.	
B	1	BOILER	Sample	S67-ASB9	29/9/2005	Chrysotile	70%	Pipeline Fitting Compound	Moderate	1	B1-Pipeline valve compound at the yellow hand valve adj. the chilled water pump C-4	Yes	2-Yellow - Asbestos on visible piping and/or ducting	Moderate	Repair/Remove	Remove the damaged insulation on the chilled water pump C-4 & C5 system	
B	1	BOILER	Sample Rep	S67-ASB9	29/9/2005	Chrysotile	70%	Pipeline Fitting Compound	Moderate	2	B1-Pipeline valve compound at the yellow hand valve adj. the chilled water pump C-4	Yes	2-Yellow - Asbestos on visible piping and/or ducting	Moderate	Remove		
B	1	BOILER	Sample	S67-ASB10	29/9/2005	Chrysotile	60%	Pipeline Fitting Compound	Good	3	B1-Condensate pipeline fitting at the south end of FS-1	Yes	2-Yellow - Asbestos on visible piping and/or ducting	Low	Manage		

TCU PLACE			BERSCH & ASSOCIATES LTD.														
			Sample Data														
Floor	Room Number	Use	Locations	Sample ID	Date DD/MM/YY	Asbestos Type	% of Asbestos	Tradename ACM Product	Condition	Priority	Description of Sample Location	Label	Functional Area Containing Asbestos	Potential for Disturbance	Recommended Action	Comments	
B	1	BOILER	Sample	S67-ASB11	29/9/2005	Chrysotile	70%	Parging Material	Poor/Mod	1	B1-Overhead ductwork parging compound between boilers #1 and #2	Yes	2-Yellow - Asbestos on visible piping and/or ducting	Moderate	Repair/Remove	Repair the ductwork insulation between boilers #1 & 2. Remove the insulation on the west side of SF2 filter bank door and repair the area beside the access door. Repair the southeast corner of SF5 air unit and remove the insulation from the east access door on the side of SF5. Conduct the removal of the asbestos containing parging above SF5. The material is deteriorating as a result of being walked on. Inform any personnel that may be accessing the area of the danger of the asbestos material until the area is dealt with. HEPA vacuum the asbestos debris from the ductwork above the SF units, the upper surface of all SF units and other horizontal surfaces above the fan units (upper portion of the boiler room above the SF units).	
B	1	BOILER	Sample Rep	S67-ASB11	29/9/2005	Chrysotile	70%	Parging Material	Moderate	1	B1-Overhead ductwork parging compound between boilers #1 and #2	Yes	2-Yellow - Asbestos on visible piping and/or ducting	Moderate	Remove	Remove the insulation from the filter bank access doors on the sides of the supply fan units due to the high potential of disturbance when opening the doors.	
B	1	BOILER	Sample	S67-ASB12	29/9/2005	Chrysotile	10%	Pipeline Fitting Compound	Moderate	1	B1-Pipeline fitting along the south wall adj. H.W. Circ. Pump H-4	Yes	2-Yellow - Asbestos on visible piping and/or ducting	Moderate	Remove	Remove various fittings in this location damaged & deteriorated.	
B	1	BOILER	Sample	S67-ASB13	29/9/2005	Chrysotile	10%	Pipeline Fitting Compound	Moderate	1	B1-Pipeline fitting along the south wall adj. H.W. Circ. Pump H-3	Yes	2-Yellow - Asbestos on visible piping and/or ducting	Moderate	Remove	Remove various fittings in this location damaged & deteriorated.	
B	1	BOILER	Sample	S67-ASB14	29/9/2005	Chrysotile	30%	Pipeline Fitting Compound	Moderate	1	B1-Exposed pipeline fitting at cleanout along the south wall adj. H.W. Circ. Pump H-2	Yes	2-Yellow - Asbestos on visible piping and/or ducting	Moderate	Remove	Remove various fittings in this location damaged & deteriorated.	
B	1	BOILER	Sample Rep	S67-ASB14	29/9/2005	Chrysotile	30%	Pipeline Fitting Compound	Poor	1	B1-Exposed pipeline fitting at cleanout along the south wall adj. H.W. Circ. Pump H-2	Yes	2-Yellow - Asbestos on visible piping and/or ducting	Moderate	Remove	Remove the insulation from 1 valve assembly and the end cap on the large steam pipeline along the south wall adj. #2 boiler.	
B	1	BOILER	Sample	S67-ASB15	29/9/2005	Chrysotile Crocidolite	40% 10%	Transite Pipe	Good	4	B1-Storm sewer transite drainpipe along the south wall adj. boiler #2	Yes	2-Yellow - Asbestos on visible piping and/or ducting	Low	Manage		
B	1	BOILER	Sample	S67-ASB16	29/9/2005	Chrysotile	80%	Lineal Pipe Insulation	Mod/Good	3	B1-Boiler exhaust insulation along the north wall in northeast corner of the room	Yes	2-Yellow - Asbestos on visible piping and/or ducting	Low	Manage		
B	1	BOILER	Sample	S67-ASB17	29/9/2005	Amosite	30%	Lineal Pipe Insulation	Poor	1	B1-Boiler exhaust insulation beneath the grey parging on the west end of boiler #2	Yes	2-Yellow - Asbestos on visible piping and/or ducting	Moderate	Remove	Remove the section of damaged boiler breeching on the upper west side of #2 boiler. Repair the breeching on the west side above the end of boiler #1 also.	

TCU PLACE			BERSCH & ASSOCIATES LTD.													
			Sample Data													
Floor	Room Number	Use	Locations	Sample ID	Date DD/MM/YY	Asbestos Type	% of Asbestos	Tradename ACM Product	Condition	Priority	Description of Sample Location	Label	Functional Area Containing Asbestos	Potential for Disturbance	Recommended Action	Comments
B	1	BOILER	Sample	S67-ASB38	20/10/2005	Chrysotile Crocidolite	40% 20%	Mechanical Insulation	Mod/Good	3	B1-Insulation on the west end of boiler #2 around the inspection glass port	Yes	7-Yellow - Asbestos on mechanical vessels/tanks	Low/Mod	Manage	The same material is present on #1 boiler
B	1.1	SERVICE	Sample Rep	S67-ASB15	29/9/2005	Chrysotile Crocidolite	40% 10%	Transite Pipe	Good	4	B1-Storm sewer transite drainpipe along the south wall adj. boiler #2	Yes	2-Yellow - Asbestos on visible piping and/or ducting	Low	Manage	Visible transite drainpipe is present
B	1.1	SERVICE	Sample Rep	S67-ASB37	20/10/2005	Chrysotile	20%	Pipeline Fitting Compound	Good	3	B1.2-Overhead pipeline fitting along the north wall	Yes	2-Yellow - Asbestos on visible piping and/or ducting	Low	Manage	Visible fittings are present
B	1.2	SPRKLER	Sample Rep	S67-ASB15	29/9/2005	Chrysotile Crocidolite	40% 10%	Transite Pipe	Good	4	B1-Storm sewer transite drainpipe along the south wall adj. boiler #2	Yes	2-Yellow - Asbestos on visible piping and/or ducting	Low	Manage	Visible transite drainpipe is present
B	1.2	SPRKLER	Sample	S67-ASB37	20/10/2005	Chrysotile	20%	Pipeline Fitting Compound	Moderate	1	B1.2-Overhead pipeline fitting along the north wall	Yes	2-Yellow - Asbestos on visible piping and/or ducting	Low/Mod	Repair	Repair 1 overhead fitting adj. the overhead door and 2 fittings in the southwest corner
B	1.3	WRKSHOP	Sample Rep	S67-ASB3	29/9/2005	Chrysotile	60%	Parging Material	Good	3	B1-Supply air fan FS-12 ductwork parging compound on east side of unit	Yes	2-Yellow - Asbestos on visible piping and/or ducting	Low	Manage	
B	2	STORAGE	Sample	S67-ASB23	30/9/2005	Chrysotile	50%	Pipeline Fitting Compound	Good	3	B2-Pipeline fitting on radiant heat in the northeast corner of the room	Yes	2-Yellow - Asbestos on visible piping and/or ducting	Low	Manage	The fitting at the location where the bulk sample was taken from has since been removed, others are present within the room.
B	2	STORAGE	Sample	S67-ASB39	20/10/2005	Chrysotile	40%	Fireproofing	Poor	1	B2-Fireproofing debris in the northeast corner on the 2 X 4 ledge	Yes	3-Yellow - Asbestos fireproofing on the structural columns	Mod/High	Cleanup	HEPA vacuum the fireproofing debris above the ductwork accessible from above the coolers. The fireproofing is present on the vertical and horizontal structural columns (some are enclosed in drywall and some not)
B	3	STORAGE	Sample	S67-ASB22	30/9/2005	Chrysotile	40%	Pipeline Fitting Compound	Good	3	B3-HWHS pipeline fitting in northwest corner	Yes	1-Yellow - Asbestos on piping and/or ducting within ceiling space	Low	Manage	The fitting at the location where the bulk sample was taken from has since been removed, others are present within the ceiling space.
B	3	STORAGE	Sample	S67-ASB43	20/10/2005	Chrysotile	20%	Pipeline Fitting Compound	Good	3	B3-Overhead HWHS1FL pipeline fitting above suspended wagon wheel	Yes	1-Yellow - Asbestos on piping and/or ducting within ceiling space	Low	Manage	Pipeline fittings within ceiling space
B	3	STORAGE	Sample Rep	S67-ASB6	29/9/2005	Chrysotile	40%	Fireproofing	Moderate	4	B1-Spray-applied fireproofing inside the access panel on the vertical column at the north end of SA fan FS-1	Yes	3-Yellow - Asbestos fireproofing on the structural columns	Low/Mod	Manage	The fireproofing is present on the enclosed structural columns
B	4	WASHRM														No accessible ACM (asbestos containing material)
B	5	WASHRM	Sample Rep	S67-ASB23	30/9/2005	Chrysotile	50%	Pipeline Fitting Compound	Good	3	B2-Pipeline fitting on radiant heat in the northeast corner of the room	Yes	2-Yellow - Asbestos on visible piping and/or ducting	Low	Manage	Visible pipeline fittings are present
B	6	STORAGE	Sample Rep	S67-ASB6	29/9/2005	Chrysotile	40%	Fireproofing	Moderate	4	B1-Spray-applied fireproofing inside the access panel on the vertical column at the north end of SA fan FS-1	Yes	3-Yellow - Asbestos fireproofing on the structural columns	Low	Manage	The fireproofing is present on the horizontal enclosed structural columns

TCU PLACE			BERSCH & ASSOCIATES LTD.													
			Sample Data													
Floor	Room Number	Use	Locations	Sample ID	Date DD/MM/YY	Asbestos Type	% of Asbestos	Tradename ACM Product	Condition	Priority	Description of Sample Location	Label	Functional Area Containing Asbestos	Potential for Disturbance	Recommended Action	Comments
B	6	STORAGE	Sample Rep	S67-ASB23	30/9/2005	Chrysotile	50%	Pipeline Fitting Compound	Good	3	B2-Pipeline fitting on radiant heat in the northeast corner of the room	Yes	2-Yellow - Asbestos on visible piping and/or ducting	Low	Manage	Visible pipeline fittings are present
B	6.1	COOLER														No accessible ACM
B	7	STORAGE	Sample Rep	S67-ASB6	29/9/2005	Chrysotile	40%	Fireproofing	Moderate	4	B1-Spray-applied fireproofing inside the access panel on the vertical column at the north end of SA fan FS-1	Yes	3-Yellow - Asbestos fireproofing on the structural columns	Low	Manage	The fireproofing is present on the horizontal enclosed structural columns
B	7	STORAGE	Sample Rep	S67-ASB23	30/9/2005	Chrysotile	50%	Pipeline Fitting Compound	Good	3	B2-Pipeline fitting on radiant heat in the northeast corner of the room	Yes	2-Yellow - Asbestos on visible piping and/or ducting	Low	Manage	Visible pipeline fittings are present
B	8	STORAGE														No accessible ACM
B	9	STORAGE														No accessible ACM
B	10	DRESS														No accessible ACM
B	10.1	WASHRM	Sample Rep	S67-ASB41	20/10/2005	Chrysotile	30%	Pipeline Fitting Compound	Good	3	B100-Small pipeline fitting adj. BS-5 stairwell door	Yes	2-Yellow - Asbestos on visible piping and/or ducting	Low	Manage	Visible pipeline fittings are present
B	11	TECH	Sample	S67-ASB55	20/10/2005		None	Vinyl Floor Tile			B11-1' X 1' black/white spec floor tile					No accessible ACM
B	12	COOLER														No accessible ACM
B	13	COOLER														No accessible ACM
B	14	JANITOR	Sample Rep	S67-ASB39	20/10/2005	Chrysotile	40%	Fireproofing	Good	4	B2-Fireproofing debris in the northeast corner on the 2 X 4 ledge	Yes	3-Yellow - Asbestos fireproofing on the structural columns	Low	Manage	The fireproofing is present on the enclosed structural columns
B	15	DISHWASH	Sample Rep	S67-ASB39	20/10/2005	Chrysotile	40%	Fireproofing	Good	4	B2-Fireproofing debris in the northeast corner on the 2 X 4 ledge	Yes	3-Yellow - Asbestos fireproofing on the structural columns	Low	Manage	The fireproofing is present on the enclosed vertical and horizontal structural columns within the room.
B	15	DISHWASH	Sample	S67-ASB44	20/10/2005	Amosite	30%	Transite Board	Good	4	B15-Board on the ductwork above the suspended ceiling	Yes	1-Yellow - Asbestos on piping and/or ducting within ceiling space	Low	Manage	
B	16	OFFICE	Sample Rep	S67-ASB39	20/10/2005	Chrysotile	40%	Fireproofing	Good	4	B2-Fireproofing debris in the northeast corner on the 2 X 4 ledge	Yes	3-Yellow - Asbestos fireproofing on the structural columns	Low	Manage	The fireproofing is present on the enclosed vertical and horizontal structural columns within the room.
B	16	OFFICE	Sample Rep	S67-ASB44	20/10/2005	Amosite	30%	Transite Board	Good	4	B15-Board on the ductwork above the suspended ceiling	Yes	1-Yellow - Asbestos on piping and/or ducting within ceiling space	Low	Manage	
B	17	KITCHEN	Sample Rep	S67-ASB39	20/10/2005	Chrysotile	40%	Fireproofing	Mod/Good	4	B2-Fireproofing debris in the northeast corner on the 2 X 4 ledge	Yes	3-Yellow - Asbestos fireproofing on the structural columns	Low	Manage	The fireproofing is present on the horizontal enclosed structural columns within the ceiling space
B	17	KITCHEN	Sample Rep	S67-ASB47	20/10/2005	Chrysotile	20%	Pipeline Fitting Compound	Good	3	above the suspended ceiling adj. room B18	Yes	1-Yellow - Asbestos on piping and/or ducting within ceiling space	Low	Manage	Pipeline fittings are present within the ceiling space
B	18	KITCHEN	Sample Rep	S67-ASB20	29/9/2005	Chrysotile	80%	Asbestos Sheet Flooring	Mod/Good	3	B21-Beige sheet floor covering	Yes	6-Yellow - Asbestos floor covering	Low	Manage	
B	18	KITCHEN	Sample Rep	S67-ASB39	20/10/2005	Chrysotile	40%	Fireproofing	Mod/Good	4	B2-Fireproofing debris in the northeast corner on the 2 X 4 ledge	Yes	3-Yellow - Asbestos fireproofing on the structural columns	Low	Manage	The fireproofing is present on the horizontal enclosed structural columns within the ceiling space. A portion of a structural column is visible.
B	19	STORAGE	Sample	S67-ASB45	20/10/2005	Chrysotile	60%	Pipeline Fitting Compound	Moderate	1	B19-Overhead pipeline fitting	Yes	2-Yellow - Asbestos on visible piping and/or ducting	Low/Mod	Remove	Remove the 2 visible fittings

TCU PLACE			BERSCH & ASSOCIATES LTD.														
			Sample Data														
Floor	Room Number	Use	Locations	Sample ID	Date DD/MM/YY	Asbestos Type	% of Asbestos	Tradename ACM Product	Condition	Priority	Description of Sample Location	Label	Functional Area Containing Asbestos	Potential for Disturbance	Recommended Action	Comments	
B	20	ELECT	Sample	S67-ASB18	29/9/2005	Chrysotile	30%	Pipeline Fitting Compound	Good	3	B20-Overhead pipeline fitting in the southwest corner	Yes	2-Yellow - Asbestos on visible piping and/or ducting	Low	Manage	The fireproofing is present on the horizontal enclosed structural columns. The visible fireproofing on the vertical columns is non asbestos	
B	20	ELECT	Sample	S67-ASB19	29/9/2005	Chrysotile	20%	Pipeline Fitting Compound	Good	3	B20-Overhead pipeline fitting adj. the east wall	Yes	2-Yellow - Asbestos on visible piping and/or ducting	Low	Manage		
B	20	ELECT	Sample Rep	S67-ASB39	20/10/2005	Chrysotile	40%	Fireproofing Asbestos Sheet	Mod/Good	4	B2-Fireproofing debris in the northeast corner on the 2 X 4 ledge	Yes	3-Yellow - Asbestos fireproofing on the structural columns	Low	Manage		
B	21	REFRIDGE	Sample	S67-ASB20	29/9/2005	Chrysotile	80%	Flooring	Moderate	3	B21-Beige sheet floor covering	Yes	6-Yellow - Asbestos floor covering	Low	Manage		
B	21	REFRIDGE	Sample	S67-ASB46	20/10/2005		None	Ceiling Tiles			B21-2' X 2' ceiling tiles						
B	22	KITCHEN	Sample	S67-ASB50	20/10/2005	Chrysotile	70%	Pipeline Fitting Compound	Good	3	B22-DCW pipeline fitting on foil-faced pipeline in the southeast corner above the suspended ceiling	Yes	1-Yellow - Asbestos on piping and/or ducting within ceiling space	Low	Manage	A few fittings are inaccessible within the ceiling space above the cooler on the south end. Consider all pipeline fittings to be ACM	
B	23	KITCHEN	Sample	S67-ASB51	20/10/2005	Chrysotile	20%	Pipeline Fitting Compound	Poor/Mod	1	B23-Pipeline fitting above the suspended ceiling at entry	Yes	1-Yellow - Asbestos on piping and/or ducting within ceiling space	Low/Mod	Remove	Remove 1 fitting within the ceiling space at the entrance. A few fittings are inaccessible within the ceiling space, consider all fitting to be ACM	
B	23	KITCHEN	Sample Rep	S67-ASB51	20/10/2005	Chrysotile	20%	Pipeline Fitting Compound	Mod/Good	3	B23-Pipeline fitting above the suspended ceiling at entry	Yes	2-Yellow - Asbestos on visible piping and/or ducting	Low	Manage	Visible pipeline fittings are present A few fittings are inaccessible within the ceiling space. Consider all pipeline fittings above the suspended ceiling to be ACM	
B	24	REGHALL'A'	Sample	S67-ASB52	20/10/2005	Chrysotile	30%	Pipeline Fitting Compound	Good	3	B24-Pipeline fitting above the suspended ceiling in the southwest corner adj. the overhead door	Yes	1-Yellow - Asbestos on piping and/or ducting within ceiling space	Low	Manage		
B	24	REGHALL'A'	Sample	S67-ASB53	20/10/2005	Chrysotile	30%	Pipeline Fitting Compound	Good	3	B23-Pipeline fitting above the suspended ceiling in the southwest corner adj. the overhead door	Yes	1-Yellow - Asbestos on piping and/or ducting within ceiling space	Low	Manage		
B	24	REGHALL'A'	Sample	S67-ASB71	07/11/05		None	Vinyl Sheet Flooring			B24-Grey & white sheet floor covering						
B	24	REGHALL'A'	Sample	S67-ASB72	07/11/05		None	Parging Material			B24-Peach color parging on ductwork above the suspended ceiling						
B	24	REGHALL'A'	Sample Rep	S67-ASB82	02-Apr-07	Chrysotile	40%	Asbestos Sheet Flooring	Good	3	B100.1-Second layer of sheet flooring, two- tone brown squares pattern	Yes	6- Yellow - Asbestos floor covering	Low	Manage	ACM flooring is present within the second layer of flooring, visible adjacent the northmost doorway on the east side of the 100.1 corridor.	
B	25	REGHALL'B'	Sample Rep	S67-ASB52	20/10/2005	Chrysotile	30%	Pipeline Fitting Compound	Good	3	B24-Pipeline fitting above the suspended ceiling in the southwest corner adj. the overhead door	Yes	1-Yellow - Asbestos on piping and/or ducting within ceiling space	Low	Manage	Pipeline fittings are present above the suspended ceiling	
B	25	REGHALL'B'	Sample Rep	S67-ASB82	02-Apr-07	Chrysotile	40%	Asbestos Sheet Flooring	Good	3	B100.1-Second layer of sheet flooring, two- tone brown squares pattern	Yes	6- Yellow - Asbestos floor covering	Low	Manage	ACM flooring is present within the second layer of flooring, visible adjacent the northmost doorway on the east side of the 100.1 corridor.	
B	26	REGHALL'C'	Sample Rep	S67-ASB52	20/10/2005	Chrysotile	30%	Pipeline Fitting Compound	Good	3	B24-Pipeline fitting above the suspended ceiling in the southwest corner adj. the overhead door	Yes	1-Yellow - Asbestos on piping and/or ducting within ceiling space	Low	Manage	Pipeline fittings are present above the suspended ceiling	

TCU PLACE			BERSCH & ASSOCIATES LTD.													
			Sample Data													
Floor	Room Number	Use	Locations	Sample ID	Date DD/MM/YY	Asbestos Type	% of Asbestos	Tradename ACM Product	Condition	Priority	Description of Sample Location	Label	Functional Area Containing Asbestos	Potential for Disturbance	Recommended Action	Comments
B	26	REGHALL'C'	Sample Rep	S67-ASB82	02-Apr-07	Chrysotile	40%	Asbestos Sheet Flooring	Good	3	B100.1-Second layer of sheet flooring, two- tone brown squares pattern	Yes	6- Yellow - Asbestos floor covering	Low	Manage	ACM flooring is present within the second layer of flooring, visible adjacent the northmost doorway on the east side of the 100.1 corridor.
B	27	REGLOBBY	Sample Rep	S67-ASB15	29/9/2005	Chrysotile Crocidolite	40% 10%	Transite Pipe	Good	4	B1-Storm sewer transite drainpipe along the south wall adj. boiler #2	Yes	1-Yellow - Asbestos on piping and/or ducting within ceiling space	Low	Manage	The transite drainpipe is present within the ceiling space
B	27	REGLOBBY	Sample Rep	S67-ASB52	20/10/2005	Chrysotile	30%	Pipeline Fitting Compound Vinyl Sheet Flooring	Good	3	B24-Pipeline fitting above the suspended ceiling in the southwest corner adj. the overhead door	Yes	1-Yellow - Asbestos on piping and/or ducting within ceiling space	Low	Manage	Pipeline fittings are present above the suspended ceiling. Some fittings were inaccessible to identify. Consider all pipeline fittings within the ceiling space to be ACM.
B	27	REGLOBBY	Sample	S67-ASB62	20/10/2005		None				B27-Beige sheet flooring adj. the elevator room area					
B	27	REGLOBBY	Sample Rep	S67-ASB82	02-Apr-07	Chrysotile	40%	Asbestos Sheet Flooring	Good	3	B100.1-Second layer of sheet flooring, two- tone brown squares pattern	Yes	6- Yellow - Asbestos floor covering	Low	Manage	ACM flooring is present within the second layer of flooring, visible adjacent the northmost doorway on the east side of the 100.1 corridor.
B	28	WEST RM	Sample Rep	S67-ASB52	20/10/2005	Chrysotile	30%	Pipeline Fitting Compound	Good	3	B24-Pipeline fitting above the suspended ceiling in the southwest corner adj. the overhead door	Yes	1-Yellow - Asbestos on piping and/or ducting within ceiling space	Low	Manage	Pipeline fittings are present above the suspended ceiling
B	29	WOMEN	Sample Rep	S67-ASB52	20/10/2005	Chrysotile	30%	Pipeline Fitting Compound	Good	3	B24-Pipeline fitting above the suspended ceiling in the southwest corner adj. the overhead door	Yes	1-Yellow - Asbestos on piping and/or ducting within ceiling space	Low	Manage	Pipeline fittings are present above the suspended ceiling
B	30	JANITOR	Sample	S67-ASB27	30/9/2005		None	Ceiling Tiles			B30-12" X 12" interlocking ceiling grid					No accessible ACM
B	30	JANITOR	Sample	S67-ASB28	30/9/2005		None	Vinyl Floor Tile			B30-1' X 1' beige floor tile					No accessible ACM
B	31	TELEPH	Sample Rep	S67-ASB15	29/9/2005	Chrysotile Crocidolite	40% 10%	Transite Pipe	Good	4	B1-Storm sewer transite drainpipe along the south wall adj. boiler #2	Yes	2-Yellow - Asbestos on visible piping and/or ducting	Low	Manage	Visible transite drainpipe is present
B	32	FAN	Sample Rep	S67-ASB15	29/9/2005	Chrysotile Crocidolite	40% 10%	Transite Pipe	Good	4	B1-Storm sewer transite drainpipe along the south wall adj. boiler #2	Yes	2-Yellow - Asbestos on visible piping and/or ducting	Low	Manage	Visible transite drainpipe is present
B	32	FAN	Sample	S67-ASB24	30/9/2005	Chrysotile	70%	Pipeline Fitting Compound	Poor/Mod	1	B32-CWS pipeline fitting on the north side of supply fan FS-10	Yes	2-Yellow - Asbestos on visible piping and/or ducting	Low/Mod	Cleanup/Manage	Clean up the debris above the ductwork in the centre of the south wall and HEPA vacuum the duct surface.
B	32	FAN	Sample	S67-ASB25	30/9/2005		None	Expansion Gasket			B32-Duct expansion joint canvass on fan FS-10					
B	32	FAN	Sample	S67-ASB59	20/10/2005	Chrysotile	60%	Pipeline Fitting Compound	Poor/Mod	1	B32-Overhead hot water return pipeline fitting adj. entry	Yes	2-Yellow - Asbestos on visible piping and/or ducting	Low/Mod	Remove	Remove the fitting at the sample location.
B	32	FAN	Sample	S67-ASB60	20/10/2005	Chrysotile	60%	Parging Material	Moderate	1	B32-Ductwork parging compound on the side of FS10 basement supply air handling unit	Yes	2-Yellow - Asbestos on visible piping and/or ducting	Moderate	Cleanup/Manage	HEPA vacuum the canvass surface above the filter bank of the asbestos debris
B	32	FAN	Sample	S67-ASB61	20/10/2005	Chrysotile	70%	Pipeline Fitting Compound	Poor/Mod	1	B32-HWR pipeline fitting adj. the west light along the north wall	Yes	2-Yellow - Asbestos on visible piping and/or ducting	Low/Mod	Remove	Remove the end cap where the fibreglass was cut around the pipeline along the north wall.

TCU PLACE			BERSCH & ASSOCIATES LTD.													
			Sample Data													
Floor	Room Number	Use	Locations	Sample ID	Date DD/MM/YY	Asbestos Type	% of Asbestos	Tradename ACM Product	Condition	Priority	Description of Sample Location	Label	Functional Area Containing Asbestos	Potential for Disturbance	Recommended Action	Comments
B	33	BAR	Sample Rep	S67-ASB15	29/9/2005	Chrysotile Crocidolite	40% 10%	Transite Pipe	Good	4	B1-Storm sewer transite drainpipe along the south wall adj. boiler #2	Yes	1-Yellow - Asbestos on piping and/or ducting within ceiling space	Low	Manage	The transite drainpipe is located within the ceiling space
B	33	BAR	Sample	S67-ASB26	30/9/2005	Chrysotile	30%	Pipeline Fitting Compound	Good	3	B33-Pipeline fitting above suspended ceiling above serving area	Yes	1-Yellow - Asbestos on piping and/or ducting within ceiling space	Low	Manage	Pipeline fittings are present within ceiling space
B	33	BAR STORAGE FAN	Sample Rep	S67-ASB60	20/10/2005	Chrysotile	60%	Parging Material	Moderate	1	B32-Ductwork parging compound on the side of FS10 basement supply air handling unit	Yes	1-Yellow - Asbestos on piping and/or ducting within ceiling space	Moderate	Cleanup/Manage	HEPA vacuum the exposed parging material on the lead-wrapped section of ventilation ductwork within the ceiling space
B	33.1															No accessible ACM
B	34															No accessible ACM
B	35	MEN	Sample Rep	S67-ASB52	20/10/2005	Chrysotile	30%	Pipeline Fitting Compound	Moderate	1	B24-Pipeline fitting above the suspended ceiling in the southwest corner adj. the overhead door	Yes	1-Yellow - Asbestos on piping and/or ducting within ceiling space	Low	Remove	Remove 1 damaged fitting in the centre of the room. The fittings are visible within the ceiling space due to the construction in the area
B	100	CORRIDOR	Sample	S67-ASB41	20/10/2005	Chrysotile	30%	Pipeline Fitting Compound	Good	3	B100-Small pipeline fitting adj. BS-5 stairwell door	Yes	1-Yellow - Asbestos on piping and/or ducting within ceiling space	Low	Manage	Fittings are present within the ceiling space behind the access to the south of room 9. A few of the fittings were identified with red paint and a few are inaccessible to identify. Consider all fittings within the enclosed ceiling space to be ACM.
B	100	CORRIDOR	Sample	S67-ASB42	20/10/2005	Chrysotile	30%	Pipeline Fitting Compound	Good	3	B100-Pipeline fitting adj. blue fire-doors adj. BS-5 stairwell	Yes	2-Yellow - Asbestos on visible piping and/or ducting	Low	Manage	
B	100	CORRIDOR	Sample	S67-ASB47	20/10/2005	Chrysotile	20%	Pipeline Fitting Compound	Good	3	B100-Small pipeline fitting above the suspended ceiling adj. room B18	Yes	1-Yellow - Asbestos on piping and/or ducting within ceiling space	Low	Manage	
B	100	CORRIDOR	Sample	S67-ASB48	20/10/2005	Chrysotile	70%	Pipeline Fitting Compound	Good	3	B100-CHWSFS14 pipeline fitting within the ceiling space above the ductwork adj. room B18	Yes	1-Yellow - Asbestos on piping and/or ducting within ceiling space	Low	Manage	
B	100	CORRIDOR	Sample	S67-ASB49	20/10/2005	Chrysotile	70%	Pipeline Fitting Compound	Moderate	2	B100-CHWSFS14 pipeline fitting within the ceiling space above the ductwork adj. room B18	Yes	1-Yellow - Asbestos on piping and/or ducting within ceiling space	Low/Mod	Remove	Remove approx. 4 fittings in the ceiling space adj. room 18. HEPA vacuum the pipeline fitting debris above the duct work in the ceiling space between room 18 and 19. A few fittings within the ceiling space are inaccessible. Consider all fittings within the ceiling space to be ACM

TCU PLACE			BERSCH & ASSOCIATES LTD.													
			Sample Data													
Floor	Room Number	Use	Locations	Sample ID	Date DD/MM/YY	Asbestos Type	% of Asbestos	Tradename ACM Product	Condition	Priority	Description of Sample Location	Label	Functional Area Containing Asbestos	Potential for Disturbance	Recommended Action	Comments
B	100	CORRIDOR	Sample Rep	S67-ASB39	20/10/2005	Chrysotile	40%	Fireproofing	Poor/Mod	1	B2-Fireproofing debris in the northeast corner on the 2 X 4 ledge	Yes	3-Yellow - Asbestos fireproofing on the structural columns	Moderate	Cleanup/Manage	The fireproofing is present on the enclosed structural columns within the ceiling space (a couple are not enclosed). Recommend HEPA vacuuming the ceiling space throughout the corridor adj. rooms 16 to19. For the interim place the ceiling tiles back into the grid system to close in the ceiling space. If entering the ceiling space above the ductwork and piping, the recommended PPE should be worn.
B	100.1	CORRIDOR	Sample Rep	S67-ASB41	20/10/2005	Chrysotile	30%	Pipeline Fitting Compound	Good	3	B100-Small pipeline fitting adj. BS-5 stairwell door B100.1-Lower layer of floor tile visible adjacent the northmost doorway on the east side of the corridor.	Yes	1-Yellow - Asbestos on piping and/or ducting within ceiling space	Low	Manage	Fittings are present within the inaccessible ceiling space to the east of Regency Hall 'B'. Consider all fittings within the enclosed ceiling space to be ACM.
B	100.1	CORRIDOR	Sample	S67-ASB81	02-Apr-07		None	Vinyl Floor Tile								
B	100.1	CORRIDOR	Sample	S67-ASB82	02-Apr-07	Chrysotile	40%	Asbestos Sheet Flooring	Moderate	2	B100.1-Second layer of sheet flooring, two- tone brown squares pattern B00.1-Top layer of sheet flooring, white and grey checkered patter running along the east side of the corridor	Yes	6- Yellow - Asbestos floor covering	Low/Mod	Repair/Remove	ACM flooring is present within the second layer of flooring, visible adjacent the northmost doorway on the east side of the corridor. The damaged portion at this doorway should be repaired or removed.
B	100.1	CORRIDOR	Sample	S67-ASB83	02-Apr-07		None	Vinyl Sheet Flooring								
B	100.1	CORRIDOR	Sample	S67-ASB84	02-Apr-07		None	Vinyl Sheet Flooring			B100.1-Sheet flooring, multi-colored flakes					
B	S2	STAIRWELL														No accessible ACM
B	S5	STAIRWELL	Sample Rep	S67-ASB21	30/9/2005	Chrysotile	70%	Heat Shield Material	Good	3	BS8-Incandescent light fixture heat shield	Yes	5-Yellow - Asbestos heat deflector shield within the incandescent light fixture(s)	Low	Manage	
B	S5	STAIRWELL	Sample	S67-ASB40	20/10/2005	Chrysotile	20%	Pipeline Fitting Compound	Good	3	BS5-Small pipeline fitting on abandon pipeline beneath stairwell	No	2-Yellow - Asbestos on visible piping and/or ducting	Moderate	Dispose	Sample taken from 2 abandon pipelines with asbestos fittings which have already been disposed of.
B	S5	STAIRWELL	Sample Rep	S67-ASB41	20/10/2005	Chrysotile	30%	Pipeline Fitting Compound	Good	3	B100-Small pipeline fitting adj. BS-5 stairwell door	Yes	2-Yellow - Asbestos on visible piping and/or ducting	Low	Manage	Pipe fitting adjacent elevator area
B	S6	STAIRWELL	Sample Rep	S67-ASB21	30/9/2005	Chrysotile	70%	Heat Shield Material	Good	3	BS8-Incandescent light fixture heat shield	Yes	5-Yellow - Asbestos heat deflector shield within the incandescent light fixture(s)	Low	Manage	
B	S7	STAIRWELL	Sample Rep	S67-ASB21	30/9/2005	Chrysotile	70%	Heat Shield Material	Good	3	BS8-Incandescent light fixture heat shield	Yes	5-Yellow - Asbestos heat deflector shield within the incandescent light fixture(s)	Low	Manage	

TCU PLACE			BERSCH & ASSOCIATES LTD.													
			Sample Data													
Floor	Room Number	Use	Locations	Sample ID	Date DD/MM/YY	Asbestos Type	% of Asbestos	Tradename ACM Product	Condition	Priority	Description of Sample Location	Label	Functional Area Containing Asbestos	Potential for Disturbance	Recommended Action	Comments
B	S8	STAIRWELL	Sample	S67-ASB21	30/9/2005	Chrysotile	70%	Heat Shield Material	Good	3	BS8-Incandescent light fixture heat shield	Yes	5-Yellow - Asbestos heat deflector shield within the incandescent light fixture(s)	Low	Manage	
B	FE	F. ELEV	Sample Rep	S67-ASB31	30/9/2005	Chrysotile	30%	Fireproofing	Moderate	4	1-third floor, spray-applied fireproofing debris in privacy block wall adj. sink	Yes	3-Yellow - Asbestos fireproofing on the structural columns	Low	Manage	The fireproofing is located on the enclosed structural columns
G		ELEC RM	Sample Rep	S67-ASB31	30/9/2005	Chrysotile	30%	Fireproofing	Moderate	4	1-third floor, spray-applied fireproofing debris in privacy block wall adj. sink	Yes	3-Yellow - Asbestos fireproofing on the structural columns	Low	Manage	The fireproofing is located on the enclosed structural columns. Room is located in the upper northwest corner of G81
G		MEZZAN	Sample Rep	S67-ASB31	30/9/2005	Chrysotile	30%	Fireproofing	Moderate	4	1-third floor, spray-applied fireproofing debris in privacy block wall adj. sink	Yes	3-Yellow - Asbestos fireproofing on the structural columns	Low	Manage	The fireproofing is located on the enclosed structural columns. Mezzanine is located in the upper northwest corner of G81
G	32	STAGE	Sample Rep	S67-ASB69	26/10/2005	Chrysotile	20%	Pipeline Fitting Compound	Good	3	G55-Pipeline fitting along the east wall adj. ductwork	Yes	2-Yellow - Asbestos on visible piping and/or ducting	Low	Manage	Visible fittings are present
G	32	STAGE	Sample Rep	S67-ASB58	20/10/2005	Chrysotile	20%	Fireproofing	Mod/Good	4	111-Mezz, spray-applied fireproofing along the west wall at the four-foot level on the horizontal enclosed structural steel	Yes	3-Yellow - Asbestos fireproofing on the structural columns	Low	Manage	The fireproofing is present on the enclosed structural columns
G	33	THEATRE	Sample Rep	S67-ASB58	20/10/2005	Chrysotile	20%	Fireproofing	Moderate	1	111-Mezz, spray-applied fireproofing along the west wall at the four-foot level on the horizontal enclosed structural steel	No	3-Yellow - Asbestos fireproofing on the structural columns	Low/Mod	Repair	The fireproofing is present within the return air plenums within the grand circle behind the brown wooden grilles on the enclosed structural columns. The fireproofing has been encapsulated on a previous asbestos cleanup project. It is our recommendation that the ductwork within the plenums be extended to the wooden grille surface to prevent any air movement across the spray-applied fireproofing surface.
G	33	THEATRE	Sample	S67-ASB80	28/3/2007		None				G33- Ceiling area, duct work parging material directly in from 3S6					
G	34	WESTLOUN														No accessible ACM
G	35	WOMEN														No accessible ACM
G	36	MEN	Sample Rep	S67-ASB58	20/10/2005	Chrysotile	20%	Fireproofing	Moderate	3	111-Mezz, spray-applied fireproofing along the west wall at the four-foot level on the horizontal enclosed structural steel	Yes	3-Yellow - Asbestos fireproofing on the structural columns	Low	Manage	The fireproofing is present on the structural columns within the ceiling space.
G	37	JANITOR														No accessible ACM. There may be fireproofing within the enclosed structural columns
G	38	WESTLOB	Sample	S67-ASB32	30/9/2005		None	Stipple Ceiling Texture			G38-texture ceiling surface					
G	39	REGAL'A'														No accessible ACM

TCU PLACE			BERSCH & ASSOCIATES LTD.													
			Sample Data													
Floor	Room Number	Use	Locations	Sample ID	Date DD/MM/YY	Asbestos Type	% of Asbestos	Tradename ACM Product	Condition	Priority	Description of Sample Location	Label	Functional Area Containing Asbestos	Potential for Disturbance	Recommended Action	Comments
G	40	LOUNGE'C'	Sample	S67-ASB73	07/11/05		None	Fireproofing			G40-Fireproofing above the suspended ceiling at the northeast corner of the bar					
G	40	LOUNGE'C'	Sample	S67-ASB74	07/11/05	Chrysotile	30%	Pipeline Fitting Compound	Mod/Good	3	G40-Small pipeline fitting above the suspended ceiling at the northeast corner of the bar area	No	1-Yellow - Asbestos on piping and/or ducting within ceiling space	Low	Manage	
G	41	REGAL'B'	Sample Rep	S67-ASB74	07/11/05	Chrysotile	30%	Pipeline Fitting Compound	Mod/Good	3	G40-Small pipeline fitting above the suspended ceiling at the northeast corner of the bar area	Yes	1-Yellow - Asbestos on piping and/or ducting within ceiling space	Low	Manage	Pipeline fittings are present within the ceiling space
G	42	SECURITY	Sample Rep	S67-ASB75	07/11/05	Chrysotile	40%	Fireproofing	Moderate	3	G43-Spray-applied fireproofing above the drywall enclosed ceiling on the structural steel at the decking surface	Yes	3-Yellow - Asbestos fireproofing on the structural columns	Low	Manage	The fireproofing is present on the structural columns within the ceiling space
G	43	MEN	Sample	S67-ASB75	07/11/05	Chrysotile	40%	Fireproofing	Moderate	3	G43-Spray-applied fireproofing above the drywall enclosed ceiling on the structural steel at the decking surface	Yes	3-Yellow - Asbestos fireproofing on the structural columns	Low	Manage	The fireproofing is present on the structural columns within the ceiling space
G	44	WOMEN	Sample	S67-ASB63	20/10/2005		None	Fireproofing			G44-Spray-applied fireproofing above supplied air grille along the east wall					
G	45	EASTLOBB														No accessible ACM
G	46	EASTLOUN	Sample	S67-ASB76	17/2/2007		None	Stipple Ceiling Texture			G46- East Lounge textured coating on ceiling adjacent to the door leading to G-100 corridor adjacent storage room					No accessible ACM
G	47	GREEN	Sample Rep	S67-ASB58	20/10/2005	Chrysotile	20%	Fireproofing	Moderate	4	111-Mezz, spray-applied fireproofing along the west wall at the four-foot level on the horizontal enclosed structural steel	Yes	3-Yellow - Asbestos fireproofing on the structural columns	Low	Manage	The fireproofing is present on the structural columns within the ceiling space. The fireproofing can be seen in a few areas above the suspended ceiling in the centre of the room and adjacent the bar.
G	47	GREEN	Sample	S67-ASB70	26/10/2005		None	Ceiling Tiles			G47-2nd layer of ceiling tile beneath the 1' X 1' ceiling tile above the suspended ceiling adj. the bar					
G	48	OFFICE														No accessible ACM
G	49	STAGERT	Sample Rep	S67-ASB58	20/10/2005	Chrysotile	20%	Fireproofing	Moderate	1	111-Mezz, spray-applied fireproofing along the west wall at the four-foot level on the horizontal enclosed structural steel	Yes	3-Yellow - Asbestos fireproofing on the structural columns	Low/Mod	Cleanup/Manage	The fireproofing is present on the enclosed structural columns. HEPA vacuum the caged-in stairwell in the southeast corner adj. the doorway. Fireproofing debris is on the adj. surfaces and chain links as you climb the stairwell
G	50	WOMEN														No accessible ACM
G	51	MEN														No accessible ACM

TCU PLACE			BERSCH & ASSOCIATES LTD.														
			Sample Data														
Floor	Room	Use	Locations	Sample ID	Date DD/MM/YY	Asbestos Type	% of Asbestos	Tradename ACM Product	Condition	Priority	Description of Sample Location	Label	Functional Area Containing Asbestos	Potential for Disturbance	Recommended Action	Comments	
G	52	MEN	Sample Rep	S67-ASB58	20/10/2005	Chrysotile	20%	Fireproofing	Good	4	111-Mezz, spray-applied fireproofing along the west wall at the four-foot level on the horizontal enclosed structural steel	Yes	3-Yellow - Asbestos fireproofing on the structural columns	Low	Manage	The fireproofing is present on the enclosed structural columns	
G	52	MEN	Sample Rep	S67-ASB69	26/10/2005	Chrysotile	20%	Pipeline Fitting Compound	Moderate	2	G55-Pipeline fitting along the east wall adj. ductwork	Yes	1-Yellow - Asbestos on piping and/or ducting within ceiling space	Low/Mod	Remove	Remove the 2 fittings above the suspended ceiling	
G	54	DRESS	Sample Rep	S67-ASB69	26/10/2005	Chrysotile	20%	Pipeline Fitting Compound	Good	3	G55-Pipeline fitting along the east wall adj. ductwork	Yes	1-Yellow - Asbestos on piping and/or ducting within ceiling space	Low	Manage		
G	54	DRESS	Sample Rep	S67-ASB69	26/10/2005	Chrysotile	20%	Pipeline Fitting Compound	Good	3	G55-Pipeline fitting along the east wall adj. ductwork	Yes	2-Yellow - Asbestos on visible piping and/or ducting	Low	Manage	Visible fitting are present	
G	54	DRESS	Sample Rep	S67-ASB58	20/10/2005	Chrysotile	20%	Fireproofing	Good	4	111-Mezz, spray-applied fireproofing along the west wall at the four-foot level on the horizontal enclosed structural steel	Yes	3-Yellow - Asbestos fireproofing on the structural columns	Low	Manage	The fireproofing is present on the enclosed structural columns	
G	55	JANITOR	Sample Rep	S67-ASB58	20/10/2005	Chrysotile	20%	Fireproofing	Good	4	111-Mezz, spray-applied fireproofing along the west wall at the four-foot level on the horizontal enclosed structural steel	Yes	3-Yellow - Asbestos fireproofing on the structural columns	Low	Manage	The fireproofing is present on the enclosed structural columns	
G	55	JANITOR	Sample	S67-ASB69	26/10/2005	Chrysotile	20%	Pipeline Fitting Compound	Good	3	G55-Pipeline fitting along the east wall adj. ductwork	Yes	2-Yellow - Asbestos on visible piping and/or ducting	Low	Manage	Visible fittings are present	
G	56	DRESS	Sample Rep	S67-ASB69	26/10/2005	Chrysotile	20%	Pipeline Fitting Compound	Good	3	G55-Pipeline fitting along the east wall adj. ductwork	Yes	1-Yellow - Asbestos on piping and/or ducting within ceiling space	Low	Manage	Fittings are present above the suspended ceiling	
G	56	DRESS	Sample Rep	S67-ASB58	20/10/2005	Chrysotile	20%	Fireproofing	Good	4	111-Mezz, spray-applied fireproofing along the west wall at the four-foot level on the horizontal enclosed structural steel	Yes	3-Yellow - Asbestos fireproofing on the structural columns	Low	Manage	The fireproofing is present on the enclosed structural columns	
G	61	DRESS	Sample Rep	S67-ASB58	20/10/2005	Chrysotile	20%	Fireproofing	Good	4	111-Mezz, spray-applied fireproofing along the west wall at the four-foot level on the horizontal enclosed structural steel	Yes	3-Yellow - Asbestos fireproofing on the structural columns	Low	Manage	The fireproofing is present on the enclosed structural columns	
G	61	DRESS	Sample Rep	S67-ASB69	26/10/2005	Chrysotile	20%	Pipeline Fitting Compound	Good	3	G55-Pipeline fitting along the east wall adj. ductwork	Yes	1-Yellow - Asbestos on piping and/or ducting within ceiling space	Low	Manage	Fittings are present above the suspended ceiling	
G	63	DRESS	Sample Rep	S67-ASB15	29/9/2005	Chrysotile Crocidolite	40% 10%	Transite Pipe	Good	4	B1-Storm sewer transite drainpipe along the south wall adj. boiler #2	Yes	1-Yellow - Asbestos on piping and/or ducting within ceiling space	Low	Manage	Transite drainpipe is present within the ceiling space	
G	63	DRESS	Sample Rep	S67-ASB58	20/10/2005	Chrysotile	20%	Fireproofing	Good	4	111-Mezz, spray-applied fireproofing along the west wall at the four-foot level on the horizontal enclosed structural steel	Yes	3-Yellow - Asbestos fireproofing on the structural columns	Low	Manage	The fireproofing is present on the enclosed structural columns within the ceiling space	

TCU PLACE			BERSCH & ASSOCIATES LTD.													
			Sample Data													
Floor	Room Number	Use	Locations	Sample ID	Date DD/MM/YY	Asbestos Type	% of Asbestos	Tradename ACM Product	Condition	Priority	Description of Sample Location	Label	Functional Area Containing Asbestos	Potential for Disturbance	Recommended Action	Comments
G	63	DRESS	Sample Rep	S67-ASB69	26/10/2005	Chrysotile	20%	Pipeline Fitting Compound	Good	3	G55-Pipeline fitting along the east wall adj. ductwork	Yes	1-Yellow - Asbestos on piping and/or ducting within ceiling space	Low	Manage	Fittings are present above the suspended ceiling
G	68	DRESS	Sample Rep	S67-ASB58	20/10/2005	Chrysotile	20%	Fireproofing	Good	4	111-Mezz, spray-applied fireproofing along the west wall at the four-foot level on the horizontal enclosed structural steel	Yes	3-Yellow - Asbestos fireproofing on the structural columns	Low	Manage	The fireproofing is present on the enclosed structural columns within the ceiling space
G	68	DRESS	Sample Rep	S67-ASB69	26/10/2005	Chrysotile	20%	Pipeline Fitting Compound	Good	3	G55-Pipeline fitting along the east wall adj. ductwork	Yes	1-Yellow - Asbestos on piping and/or ducting within ceiling space	Low	Manage	Pipeline fittings are present above the suspended ceiling
G	69	DRESS	Sample Rep	S67-ASB58	20/10/2005	Chrysotile	20%	Fireproofing	Good	4	111-Mezz, spray-applied fireproofing along the west wall at the four-foot level on the horizontal enclosed structural steel	Yes	3-Yellow - Asbestos fireproofing on the structural columns	Low	Manage	The fireproofing is present on the enclosed structural columns within the ceiling space and the vertical column in the southwest corner
G	69	DRESS	Sample Rep	S67-ASB69	26/10/2005	Chrysotile	20%	Pipeline Fitting Compound	Good	3	G55-Pipeline fitting along the east wall adj. ductwork	Yes	1-Yellow - Asbestos on piping and/or ducting within ceiling space	Low	Manage	Pipeline fittings are present above the suspended ceiling
G	75	DRESS	Sample Rep	S67-ASB58	20/10/2005	Chrysotile	20%	Fireproofing	Good	4	111-Mezz, spray-applied fireproofing along the west wall at the four-foot level on the horizontal enclosed structural steel	Yes	3-Yellow - Asbestos fireproofing on the structural columns	Low	Manage	The fireproofing is present on the enclosed structural columns within the ceiling space and the vertical column in the southwest corner
G	75	DRESS	Sample Rep	S67-ASB69	26/10/2005	Chrysotile	20%	Pipeline Fitting Compound	Good	3	G55-Pipeline fitting along the east wall adj. ductwork	Yes	1-Yellow - Asbestos on piping and/or ducting within ceiling space	Low	Manage	Pipeline fittings are present above the suspended ceiling
G	76	SEWING	Sample Rep	S67-ASB58	20/10/2005	Chrysotile	20%	Fireproofing	Good	4	111-Mezz, spray-applied fireproofing along the west wall at the four-foot level on the horizontal enclosed structural steel	Yes	3-Yellow - Asbestos fireproofing on the structural columns	Low	Manage	The fireproofing is present on the enclosed structural columns within the ceiling space
G	76	SEWING	Sample Rep	S67-ASB69	26/10/2005	Chrysotile	20%	Pipeline Fitting Compound	Good	3	G55-Pipeline fitting along the east wall adj. ductwork	Yes	1-Yellow - Asbestos on piping and/or ducting within ceiling space	Low	Manage	Pipeline fittings are present above the suspended ceiling
G	77	LOADDOC	Sample Rep	S67-ASB58	20/10/2005	Chrysotile	20%	Fireproofing	Good	4	111-Mezz, spray-applied fireproofing along the west wall at the four-foot level on the horizontal enclosed structural steel	Yes	3-Yellow - Asbestos fireproofing on the structural columns	Low	Manage	The fireproofing is present on the enclosed structural columns
G	77	LOADDOC	Sample Rep	S67-ASB69	26/10/2005	Chrysotile	20%	Pipeline Fitting Compound	Good	3	G55-Pipeline fitting along the east wall adj. ductwork	Yes	2-Yellow - Asbestos on visible piping and/or ducting	Low	Manage	Visible pipeline fittings are present
G	78	STAGEDR														No accessible ACM
G	79	OFFICE	Sample Rep	S67-ASB54	20/10/2005	Chrysotile	20%	Pipeline Fitting Compound	Good	3	MS8-Small HWHR pipeline fitting on the landing adj. pop dispenser		1-Yellow - Asbestos on piping and/or ducting within ceiling space	Low	Manage	Pipeline fittings are present within the ceiling space
G	81	STAGELFT	Sample Rep	S67-ASB15	29/9/2005	Chrysotile Crocidolite	40% 10%	Transite Pipe	Good	4	B1-Storm sewer transite drainpipe along the south wall adj. boiler #2	Yes	2-Yellow - Asbestos on visible piping and/or ducting	Low	Manage	Visible transite drainpipe is present

TCU PLACE			BERSCH & ASSOCIATES LTD.														
	Room		Sample Data														
Floor	Number	Use	Locations	Sample ID	Date DD/MM/YY	Asbestos Type	% of Asbestos	Tradename ACM Product	Condition	Priority	Description of Sample Location	Label	Functional Area Containing Asbestos	Potential for Disturbance	Recommended Action	Comments	
G	81	STAGELFT	Sample Rep	S67-ASB58	20/10/2005	Chrysotile	20%	Fireproofing	Good	4	111-Mezz, spray-applied fireproofing along the west wall at the four-foot level on the horizontal enclosed structural steel	Yes	3-Yellow - Asbestos fireproofing on the structural columns	Low	Manage	The fireproofing is present on the enclosed structural columns.	
G	81	STAGELFT	Sample Rep	S67-ASB69	26/10/2005	Chrysotile	20%	Pipeline Fitting Compound	Good	3	G55-Pipeline fitting along the east wall adj. ductwork	Yes	2-Yellow - Asbestos on visible piping and/or ducting	Low	Manage	Pipeline fittings are present.	
G	100	CORRIDOR	Sample Rep	S67-ASB58	20/10/2005	Chrysotile	20%	Fireproofing	Moderate	1	111-Mezz, spray-applied fireproofing along the west wall at the four-foot level on the horizontal enclosed structural steel	Yes	3-Yellow - Asbestos fireproofing on the structural columns	Low/Mod	Cleanup	The fireproofing is present on the enclosed structural columns and a section of the structural column above the ceiling tile that is exposed. HEPA vacuum the debris on the ceiling tile on the west side of the exit sign at the S7 stairwell.	
G	100	CORRIDOR	Sample Rep	S67-ASB69	26/10/2005	Chrysotile	20%	Pipeline Fitting Compound	Good	3	G55-Pipeline fitting along the east wall adj. ductwork	Yes	1-Yellow - Asbestos on piping and/or ducting within ceiling space	Low	Manage	Pipeline fittings are present above the suspended ceiling. Some fittings were inaccessible to identify. Consider all pipeline fittings within the ceiling space to be ACM.	
G	S2	STAIRWELL														No accessible ACM	
G	S5	STAIRWELL	Sample Rep	S67-ASB21	30/9/2005	Chrysotile	70%	Heat Shield Material	Good	3	BS8-Incandescent light fixture heat shield	Yes	5-Yellow - Asbestos heat deflector shield within the incandescent light fixture(s)	Low	Manage		
G	S6	STAIRWELL	Sample Rep	S67-ASB21	30/9/2005	Chrysotile	70%	Heat Shield Material	Good	3	BS8-Incandescent light fixture heat shield	Yes	5-Yellow - Asbestos heat deflector shield within the incandescent light fixture(s)	Low	Manage		
G	S6	STAIRWELL	Sample Rep	S67-ASB57	20/10/2005	Chrysotile	1-5%	Vinyl Asbestos Tile	Good	4	113-Mezz, 1' X 1' cream/lt brown streak floor tile	Yes	6-Yellow - Asbestos floor covering	Low	Manage		
G	S6	STAIRWELL	Sample Rep	S67-ASB58	20/10/2005	Chrysotile	20%	Fireproofing	Good	4	111-Mezz, spray-applied fireproofing along the west wall at the four-foot level on the horizontal enclosed structural steel	Yes	3-Yellow - Asbestos fireproofing on the structural columns	Low	Manage	The fireproofing is present on the enclosed structural columns	
G	S7	STAIRWELL	Sample Rep	S67-ASB21	30/9/2005	Chrysotile	70%	Heat Shield Material	Good	3	BS8-Incandescent light fixture heat shield	Yes	5-Yellow - Asbestos heat deflector shield within the incandescent light fixture(s)	Low	Manage		
G	S7	STAIRWELL	Sample Rep	S67-ASB57	20/10/2005	Chrysotile	1-5%	Vinyl Asbestos Tile	Good	4	113-Mezz, 1' X 1' cream/lt brown streak floor tile	Yes	6-Yellow - Asbestos floor covering	Low	Manage		
G	S8	STAIRWELL	Sample Rep	S67-ASB21	30/9/2005	Chrysotile	70%	Heat Shield Material	Good	3	BS8-Incandescent light fixture heat shield	Yes	5-Yellow - Asbestos heat deflector shield within the incandescent light fixture(s)	Low	Manage		
G	S8	STAIRWELL	Sample Rep	S67-ASB57	20/10/2005	Chrysotile	1-5%	Vinyl Asbestos Tile	Good	4	113-Mezz, 1' X 1' cream/lt brown streak floor tile	Yes	6-Yellow - Asbestos floor covering	Low	Manage	Floor tile is on stair treads going up	
G	FE	F. ELEV	Sample Rep	S67-ASB31	30/9/2005	Chrysotile	30%	Fireproofing	Moderate	4	1-third floor, spray-applied fireproofing debris in privacy block wall adj. sink	Yes	3-Yellow - Asbestos fireproofing on the structural columns	Low	Manage	The fireproofing is located on the enclosed structural columns	
1	1	STORAGE	Sample Rep	S67-ASB58	20/10/2005	Chrysotile	20%	Fireproofing	Moderate	4	111-Mezz, spray-applied fireproofing along the west wall at the four-foot level on the horizontal enclosed structural steel	Yes	4-Yellow - Asbestos fireproofing remnants within the block wall cavity	Low	Manage	The fireproofing is present within the inaccessible wall cavity. Refer to floor plans for locations.	

TCU PLACE			BERSCH & ASSOCIATES LTD.													
			Sample Data													
Floor	Room Number	Use	Locations	Sample ID	Date DD/MM/YY	Asbestos Type	% of Asbestos	Tradename ACM Product	Condition	Priority	Description of Sample Location	Label	Functional Area Containing Asbestos	Potential for Disturbance	Recommended Action	Comments
1	2	SALONWST	Sample Rep	S67-ASB58	20/10/2005	Chrysotile	20%	Fireproofing	Moderate	4	111-Mezz, spray-applied fireproofing along the west wall at the four-foot level on the horizontal enclosed structural steel	Yes	3-Yellow - Asbestos fireproofing on the structural columns	Low	Manage	The fireproofing is present within the inaccessible ceiling space
1	2	SALONWST	Sample Rep	S67-ASB68	26/10/2005	Chrysotile	20%	Pipeline Fitting Compound	Good	4	1S7-Small pipeline fitting along the east wall	Yes	and/or ducting within ceiling space	Low	Manage	Pipeline fittings are present within the inaccessible ceiling space
1	3	ELEC	Sample	S67-ASB29	30/9/2005		None	Vinyl Floor Tile			3-first floor 1' X 1' cream/beige streak floor tile					
1	4	MEN														No accessible ACM
1	5	MEN														No accessible ACM
1	6	BARSTOR														No accessible ACM
1	7	WOMEN														No accessible ACM
1	8	WESTLOUN	Sample Rep	S67-ASB58	20/10/2005	Chrysotile	20%	Fireproofing	Mod/Good	4	111-Mezz, spray-applied fireproofing along the west wall at the four-foot level on the horizontal enclosed structural steel	Yes	3-Yellow - Asbestos fireproofing on the structural columns	Low	Manage	The fireproofing may be present within the enclosed structural columns within the ceiling and walls
1	9	EASTLOUN	Sample Rep	S67-ASB58	20/10/2005	Chrysotile	20%	Fireproofing	Mod/Good	4	111-Mezz, spray-applied fireproofing along the west wall at the four-foot level on the horizontal enclosed structural steel	Yes	3-Yellow - Asbestos fireproofing on the structural columns	Low	Manage	The fireproofing may be present within the enclosed structural columns within the ceiling and walls
1	10	CORPRATE														No accessible ACM
1	11	CORPRATE														No accessible ACM
1	12	CORPRATE														No accessible ACM
1	13	CORPRATE														No accessible ACM
1	14	CORPRATE														No accessible ACM
1	15	CORPRATE														No accessible ACM
1	16	WASHRM	Sample Rep	S67-ASB68	26/10/2005	Chrysotile	20%	Pipeline Fitting Compound	Good	3	1S7-Small pipeline fitting along the east wall	Yes	2-Yellow - Asbestos on visible piping and/or ducting	Low	Manage	Visible fittings are present
1	17	EXECUTIVE														No accessible ACM
1	18	REHEARSL	Sample	S67-ASB77	28/3/2007		None	Parging Material			First floor room 18- Wall parging on diagonal structure on north wall					No accessible ACM
1	18	REHEARSL	Sample	S67-ASB78	28/3/2007		None	Pipeline Fitting Compound			First floor room 18- Small pipeline fitting in northeast corner of room					No accessible ACM
1	18	REHEARSL	Sample	S67-ASB79	28/3/2007		None	Wall tile			First floor room 18- Acoustic wall tile at northeast corner of room					No accessible ACM
1	19	SALES	Sample Rep	S67-ASB6	29/9/2005	Chrysotile	40%	Fireproofing	Moderate	4	B1-Spray-applied fireproofing inside the access panel on the vertical column at the north end of SA fan FS-1	Yes	3-Yellow - Asbestos fireproofing on the structural columns	Low	Manage	The fireproofing is located on the enclosed structural columns within the ceiling space
1	19	SALES	Sample Rep	S67-ASB68	26/10/2005	Chrysotile	20%	Pipeline Fitting Compound	Good	3	1S7-Small pipeline fitting along the east wall	Yes	1-Yellow - Asbestos on piping and/or ducting within ceiling space	Low	Manage	Pipeline fittings are present within the ceiling space

TCU PLACE			BERSCH & ASSOCIATES LTD.													
			Sample Data													
Floor	Room	Use	Locations	Sample ID	Date DD/MM/YY	Asbestos Type	% of Asbestos	Tradename ACM Product	Condition	Priority	Description of Sample Location	Label	Functional Area Containing Asbestos	Potential for Disturbance	Recommended Action	Comments
1	20	WOMEN	Sample Rep	S67-ASB6	29/9/2005	Chrysotile	40%	Fireproofing	Moderate	4	B1-Spray-applied fireproofing inside the access panel on the vertical column at the north end of SA fan FS-1	Yes	3-Yellow - Asbestos fireproofing on the structural columns	Low	Manage	The fireproofing is located on the enclosed structural columns within the ceiling space
1	20	WOMEN	Sample Rep	S67-ASB21	30/9/2005	Chrysotile	70%	Heat Shield Material	Good	3	BS8-Incandescent light fixture heat shield	Yes	5-Yellow - Asbestos heat deflector shield within the incandescent light fixture(s)	Low	Manage	
1	20	WOMEN	Sample Rep	S67-ASB68	26/10/2005	Chrysotile	20%	Pipeline Fitting Compound	Good	3	1S7-Small pipeline fitting along the east wall	Yes	2-Yellow - Asbestos on visible piping and/or ducting	Low	Manage	Visible pipeline fittings are present
1	21	PRACT101	Sample Rep	S67-ASB6	29/9/2005	Chrysotile	40%	Fireproofing	Moderate	4	B1-Spray-applied fireproofing inside the access panel on the vertical column at the north end of SA fan FS-1	Yes	3-Yellow - Asbestos fireproofing on the structural columns	Low	Manage	The fireproofing is located on the enclosed structural columns
1	21	PRACT101	Sample Rep	S67-ASB57	20/10/2005	Chrysotile	1-5%	Vinyl Asbestos Tile	Good	4	113-Mezz, 1' X 1' cream/lt brown streak floor tile	Yes	6-Yellow - Asbestos floor covering	Low	Manage	
1	22	PRACT102	Sample Rep	S67-ASB6	29/9/2005	Chrysotile	40%	Fireproofing	Moderate	4	B1-Spray-applied fireproofing inside the access panel on the vertical column at the north end of SA fan FS-1	Yes	3-Yellow - Asbestos fireproofing on the structural columns	Low	Manage	The fireproofing is located on the enclosed structural columns
1	22	PRACT102	Sample Rep	S67-ASB15	29/9/2005	Chrysotile Crocidolite	40% 10%	Transite Pipe	Good	4	B1-Storm sewer transite drainpipe along the south wall adj. boiler #2	Yes	2-Yellow - Asbestos on visible piping and/or ducting	Low	Manage	Visible transite drainpipe is present
1	22	PRACT102	Sample Rep	S67-ASB21	30/9/2005	Chrysotile	70%	Heat Shield Material	Good	3	BS8-Incandescent light fixture heat shield	Yes	5-Yellow - Asbestos heat deflector shield within the incandescent light fixture(s)	Low	Manage	
1	22	PRACT102	Sample Rep	S67-ASB57	20/10/2005	Chrysotile	1-5%	Vinyl Asbestos Tile	Good	4	113-Mezz, 1' X 1' cream/lt brown streak floor tile	Yes	6-Yellow - Asbestos floor covering	Low	Manage	
1	22	PRACT102	Sample Rep	S67-ASB68	26/10/2005	Chrysotile	20%	Pipeline Fitting Compound	Good	3	1S7-Small pipeline fitting along the east wall	Yes	2-Yellow - Asbestos on visible piping and/or ducting	Low	Manage	Visible pipeline fittings are present
1	23	JANITOR	Sample Rep	S67-ASB68	26/10/2005	Chrysotile	20%	Pipeline Fitting Compound	Good	3	1S7-Small pipeline fitting along the east wall	Yes	2-Yellow - Asbestos on visible piping and/or ducting	Low	Manage	Visible pipeline fittings are present
1	23	JANITOR	Sample Rep	S67-ASB6	29/9/2005	Chrysotile	40%	Fireproofing	Moderate	4	B1-Spray-applied fireproofing inside the access panel on the vertical column at the north end of SA fan FS-1	Yes	3-Yellow - Asbestos fireproofing on the structural columns	Low	Manage	The fireproofing is located on the enclosed structural columns
1	24	MEN	Sample Rep	S67-ASB6	29/9/2005	Chrysotile	40%	Fireproofing	Moderate	4	B1-Spray-applied fireproofing inside the access panel on the vertical column at the north end of SA fan FS-1	Yes	3-Yellow - Asbestos fireproofing on the structural columns	Low	Manage	The fireproofing is located on the enclosed structural columns
1	24	MEN	Sample Rep	S67-ASB57	20/10/2005	Chrysotile	1-5%	Vinyl Asbestos Tile	Good	4	113-Mezz, 1' X 1' cream/lt brown streak floor tile	Yes	6-Yellow - Asbestos floor covering	Low	Manage	
1	24	MEN	Sample Rep	S67-ASB68	26/10/2005	Chrysotile	20%	Pipeline Fitting Compound	Good	3	1S7-Small pipeline fitting along the east wall	Yes	2-Yellow - Asbestos on visible piping and/or ducting	Low	Manage	Visible pipeline fittings are present

TCU PLACE			BERSCH & ASSOCIATES LTD.														
			Sample Data														
Floor	Room	Use	Locations	Sample ID	Date DD/MM/YY	Asbestos Type	% of Asbestos	Tradename ACM Product	Condition	Priority	Description of Sample Location	Label	Functional Area Containing Asbestos	Potential for Disturbance	Recommended Action	Comments	
1	25	DRESS	Sample Rep	S67-ASB6	29/9/2005	Chrysotile	40%	Fireproofing	Moderate	4	B1-Spray-applied fireproofing inside the access panel on the vertical column at the north end of SA fan FS-1	Yes	3-Yellow - Asbestos fireproofing on the structural columns	Low	Manage	The fireproofing is located on the enclosed structural columns	
1	25	DRESS	Sample Rep	S67-ASB57	20/10/2005	Chrysotile	1-5%	Vinyl Asbestos Tile	Good	4	113-Mezz, 1' X 1' cream/lt brown streak floor tile	Yes	6-Yellow - Asbestos floor covering	Low	Manage		
1	25	DRESS	Sample Rep	S67-ASB68	26/10/2005	Chrysotile	20%	Pipeline Fitting Compound	Good	3	1S7-Small pipeline fitting along the east wall	Yes	2-Yellow - Asbestos on visible piping and/or ducting	Low	Manage	Visible pipeline fittings are present	
1	26	WOMEN	Sample Rep	S67-ASB6	29/9/2005	Chrysotile	40%	Fireproofing	Moderate	4	B1-Spray-applied fireproofing inside the access panel on the vertical column at the north end of SA fan FS-1	Yes	3-Yellow - Asbestos fireproofing on the structural columns	Low	Manage	The fireproofing is located on the enclosed structural columns	
1	26	WOMEN	Sample Rep	S67-ASB57	20/10/2005	Chrysotile	1-5%	Vinyl Asbestos Tile	Good	4	113-Mezz, 1' X 1' cream/lt brown streak floor tile	Yes	6-Yellow - Asbestos floor covering	Low	Manage		
1	26	WOMEN	Sample Rep	S67-ASB68	26/10/2005	Chrysotile	20%	Pipeline Fitting Compound	Good	3	1S7-Small pipeline fitting along the east wall	Yes	2-Yellow - Asbestos on visible piping and/or ducting	Low	Manage	Visible pipeline fittings are present	
1	27	DRESS	Sample Rep	S67-ASB6	29/9/2005	Chrysotile	40%	Fireproofing	Moderate	4	B1-Spray-applied fireproofing inside the access panel on the vertical column at the north end of SA fan FS-1	Yes	3-Yellow - Asbestos fireproofing on the structural columns	Low	Manage	The fireproofing is located on the enclosed structural columns	
1	27	DRESS	Sample Rep	S67-ASB57	20/10/2005	Chrysotile	1-5%	Vinyl Asbestos Tile	Good	4	113-Mezz, 1' X 1' cream/lt brown streak floor tile	Yes	6-Yellow - Asbestos floor covering	Low	Manage		
1	27	DRESS	Sample Rep	S67-ASB68	26/10/2005	Chrysotile	20%	Pipeline Fitting Compound	Good	3	1S7-Small pipeline fitting along the east wall	Yes	2-Yellow - Asbestos on visible piping and/or ducting	Low	Manage	Visible pipeline fittings are present	
1	28	WOMEN	Sample Rep	S67-ASB6	29/9/2005	Chrysotile	40%	Fireproofing	Moderate	4	B1-Spray-applied fireproofing inside the access panel on the vertical column at the north end of SA fan FS-1	Yes	3-Yellow - Asbestos fireproofing on the structural columns	Low	Manage	The fireproofing is located on the enclosed structural columns	
1	28	WOMEN	Sample Rep	S67-ASB57	20/10/2005	Chrysotile	1-5%	Vinyl Asbestos Tile	Good	4	113-Mezz, 1' X 1' cream/lt brown streak floor tile	Yes	6-Yellow - Asbestos floor covering	Low	Manage		
1	28	WOMEN	Sample Rep	S67-ASB68	26/10/2005	Chrysotile	20%	Pipeline Fitting Compound	Good	3	1S7-Small pipeline fitting along the east wall	Yes	2-Yellow - Asbestos on visible piping and/or ducting	Low	Manage	Visible pipeline fittings are present	
1	29	SIDE BOX	Sample Rep	S67-ASB6	29/9/2005	Chrysotile	40%	Fireproofing	Moderate	1	B1-Spray-applied fireproofing inside the access panel on the vertical column at the north end of SA fan FS-1	Yes	3-Yellow - Asbestos fireproofing on the structural columns	Moderate	Cleanup	The fireproofing is located on the enclosed vertical structural columns within the plenums behind the west side boxes. The label was placed on the access panel jambs on west wall. HEPA vacuum the visible fireproofing debris and apply a lag coating to the exposed areas.	

TCU PLACE			BERSCH & ASSOCIATES LTD.															
			Sample Data															
Floor	Room Number	Use	Locations	Sample ID	Date DD/MM/YY	Asbestos Type	% of Asbestos	Tradename ACM Product	Condition	Priority	Description of Sample Location	Label	Functional Area Containing Asbestos	Potential for Disturbance	Recommended Action	Comments		
1	30	SIDE BOX	Sample Rep	S67-ASB6	29/9/2005	Chrysotile	40%	Fireproofing	Moderate	1	B1-Spray-applied fireproofing inside the access panel on the vertical column at the north end of SA fan FS-1	Yes	3-Yellow - Asbestos fireproofing on the structural columns	Moderate	Cleanup	The fireproofing is located on the enclosed vertical structural columns within the plenums behind the east side boxes. The label was placed on the access panel jambs on east wall. HEPA vacuum the visible fireproofing debris and apply a lag coating to the exposed areas.		
1	100	CORRIDOR	Sample Rep	S67-ASB6	29/9/2005	Chrysotile	40%	Fireproofing	Moderate	4	B1-Spray-applied fireproofing inside the access panel on the vertical column at the north end of SA fan FS-1	Yes	3-Yellow - Asbestos fireproofing on the structural columns	Low	Manage	The fireproofing is located on the enclosed structural columns		
1	100	CORRIDOR	Sample Rep	S67-ASB21	30/9/2005	Chrysotile	70%	Heat Shield Material	Good	3	BS8-Incandescent light fixture heat shield	Yes	5-Yellow - Asbestos heat deflector shield within the incandescent light fixture(s)	Low	Manage			
1	100	CORRIDOR	Sample Rep	S67-ASB57	20/10/2005	Chrysotile	1-5%	Vinyl Asbestos Tile	Good	4	113-Mezz, 1' X 1' cream/lt brown streak floor tile	Yes	6-Yellow - Asbestos floor covering	Low	Manage			
1	100	CORRIDOR	Sample Rep	S67-ASB68	26/10/2005	Chrysotile	20%	Pipeline Fitting Compound	Good	3	1S7-Small pipeline fitting along the east wall	Yes	2-Yellow - Asbestos on visible piping and/or ducting	Low	Manage	Visible pipeline fittings are present		
1	S2	STAIRWELL														No accessible ACM		
1	S5	STAIRWELL	Sample Rep	S67-ASB21	30/9/2005	Chrysotile	70%	Heat Shield Material	Good	3	BS8-Incandescent light fixture heat shield	Yes	5-Yellow - Asbestos heat deflector shield within the incandescent light fixture(s)	Low	Manage			
1	S6	STAIRWELL	Sample Rep	S67-ASB21	30/9/2005	Chrysotile	70%	Heat Shield Material	Good	3	BS8-Incandescent light fixture heat shield	Yes	5-Yellow - Asbestos heat deflector shield within the incandescent light fixture(s)	Low	Manage			
1	S6	STAIRWELL	Sample Rep	S67-ASB58	20/10/2005	Chrysotile	20%	Fireproofing	Good	4	111-Mezz, spray-applied fireproofing along the west wall at the four-foot level on the horizontal enclosed structural steel	Yes	3-Yellow - Asbestos fireproofing on the structural columns	Low	Manage	The fireproofing is present on the enclosed structural columns		
1	S7	STAIRWELL	Sample Rep	S67-ASB21	30/9/2005	Chrysotile	70%	Heat Shield Material	Good	3	BS8-Incandescent light fixture heat shield	Yes	5-Yellow - Asbestos heat deflector shield within the incandescent light fixture(s)	Low	Manage			
1	S7	STAIRWELL	Sample Rep	S67-ASB57	20/10/2005	Chrysotile	1-5%	Vinyl Asbestos Tile	Good	4	113-Mezz, 1' X 1' cream/lt brown streak floor tile	Yes	6-Yellow - Asbestos floor covering	Low	Manage			
1	S7	STAIRWELL	Sample	S67-ASB68	26/10/2005	Chrysotile	20%	Pipeline Fitting Compound	Good	3	1S7-Small pipeline fitting along the east wall	Yes	2-Yellow - Asbestos on visible piping and/or ducting	Low	Manage			
1	S8	STAIRWELL	Sample Rep	S67-ASB21	30/9/2005	Chrysotile	70%	Heat Shield Material	Good	3	BS8-Incandescent light fixture heat shield	Yes	5-Yellow - Asbestos heat deflector shield within the incandescent light fixture(s)	Low	Manage			
1	S8	STAIRWELL	Sample Rep	S67-ASB57	20/10/2005	Chrysotile	1-5%	Vinyl Asbestos Tile	Good	4	113-Mezz, 1' X 1' cream/lt brown streak floor tile	Yes	6-Yellow - Asbestos floor covering	Low	Manage			
1	FE	F. ELEV	Sample Rep	S67-ASB31	30/9/2005	Chrysotile	30%	Fireproofing	Moderate	4	1-third floor, spray-applied fireproofing debris in privacy block wall adj. sink	Yes	3-Yellow - Asbestos fireproofing on the structural columns	Low	Manage	The fireproofing is located on the enclosed structural columns		
M	100	CORRIDOR	Sample Rep	S67-ASB41	20/10/2005	Chrysotile	30%	Pipeline Fitting Compound	Good	3	B100-Small pipeline fitting adj. BS-5 stairwell door	Yes	2-Yellow - Asbestos on visible piping and/or ducting	Low	Manage	Visible pipeline fittings are present		
M	100.1	JANITOR														No accessible ACM		
M	100.2	WASHRM														No accessible ACM		

TCU PLACE			BERSCH & ASSOCIATES LTD.														
			Sample Data														
Floor	Room	Use	Locations	Sample ID	Date DD/MM/YY	Asbestos Type	% of Asbestos	Tradename ACM Product	Condition	Priority	Description of Sample Location	Label	Functional Area Containing Asbestos	Potential for Disturbance	Recommended Action	Comments	
M	105	OFFICE	Sample Rep	S67-ASB41	20/10/2005	Chrysotile	30%	Pipeline Fitting Compound	Good	3	B100-Small pipeline fitting adj. BS-5 stairwell door	Yes	1-Yellow - Asbestos on piping and/or ducting within ceiling space	Low	Manage	Pipeline fittings are present within the ceiling space	
M	105	OFFICE	Sample Rep	S67-ASB57	20/10/2005	Chrysotile	1-5%	Vinyl Asbestos Tile	Good	4	113-Mezz, 1' X 1' cream/lt brown streak floor tile	Yes	6-Yellow - Asbestos floor covering	Low	Manage		
M	105	OFFICE	Sample Rep	S67-ASB58	20/10/2005	Chrysotile	20%	Fireproofing	Good	4	111-Mezz, spray-applied fireproofing along the west wall at the four-foot level on the horizontal enclosed structural steel	Yes	3-Yellow - Asbestos fireproofing on the structural columns	Low	Manage	The fireproofing may be present on the enclosed structural column along the ceiling and the vertical column	
M	106	OFFICE	Sample Rep	S67-ASB21	30/9/2005	Chrysotile	70%	Heat Shield Material	Good	3	BS8-Incandescent light fixture heat shield	Yes	5-Yellow - Asbestos heat deflector shield within the incandescent light fixture(s)	Low	Manage		
M	107	OFFICE	Sample Rep	S67-ASB21	30/9/2005	Chrysotile	70%	Heat Shield Material	Good	3	BS8-Incandescent light fixture heat shield	Yes	5-Yellow - Asbestos heat deflector shield within the incandescent light fixture(s)	Low	Manage		
M	107.1	WASHRM														No accessible ACM	
M	108	OFFICE	Sample Rep	S67-ASB21	30/9/2005	Chrysotile	70%	Heat Shield Material	Good	3	BS8-Incandescent light fixture heat shield	Yes	5-Yellow - Asbestos heat deflector shield within the incandescent light fixture(s)	Low	Manage		
M	108	OFFICE	Sample Rep	S67-ASB58	20/10/2005	Chrysotile	20%	Fireproofing	Good	4	111-Mezz, spray-applied fireproofing along the west wall at the four-foot level on the horizontal enclosed structural steel	Yes	3-Yellow - Asbestos fireproofing on the structural columns	Low	Manage	The fireproofing may be present on the enclosed structural column along the ceiling	
M	108.1	WASHRM	Sample Rep	S67-ASB58	20/10/2005	Chrysotile	20%	Fireproofing	Good	4	111-Mezz, spray-applied fireproofing along the west wall at the four-foot level on the horizontal enclosed structural steel	Yes	3-Yellow - Asbestos fireproofing on the structural columns	Low	Manage	The fireproofing may be present on the enclosed structural column along the ceiling and the vertical column	
M	109	OFFICE	Sample Rep	S67-ASB41	20/10/2005	Chrysotile	30%	Pipeline Fitting Compound	Good	3	B100-Small pipeline fitting adj. BS-5 stairwell door	Yes	1-Yellow - Asbestos on piping and/or ducting within ceiling space	Low	Manage	Pipeline fittings are present within the ceiling space	
M	109	OFFICE	Sample Rep	S67-ASB57	20/10/2005	Chrysotile	1-5%	Vinyl Asbestos Tile	Good	4	113-Mezz, 1' X 1' cream/lt brown streak floor tile	Yes	6-Yellow - Asbestos floor covering	Low	Manage		
M	109	OFFICE	Sample Rep	S67-ASB58	20/10/2005	Chrysotile	20%	Fireproofing	Good	4	111-Mezz, spray-applied fireproofing along the west wall at the four-foot level on the horizontal enclosed structural steel	Yes	3-Yellow - Asbestos fireproofing on the structural columns	Low	Manage	The fireproofing may be present on the enclosed structural column above the suspended ceiling and on the enclosed vertical column on the east wall	
M	110	OFFICE	Sample Rep	S67-ASB41	20/10/2005	Chrysotile	30%	Pipeline Fitting Compound	Good	3	B100-Small pipeline fitting adj. BS-5 stairwell door	Yes	2-Yellow - Asbestos on visible piping and/or ducting	Low	Manage	Visible pipeline fittings are present	
M	110	OFFICE	Sample Rep	S67-ASB56	20/10/2005	Chrysotile	40%	Transite Board	Poor/Mod	1	112-Mezz, perforated panel board on the south wall	Yes	2-Yellow - Asbestos on visible piping and/or ducting	Moderate	Remove	Asbestos transite board is located on the side of a section of ductwork. Remove the board from the side of ductwork or enclose the transite board edges around the inspection door.	

TCU PLACE			BERSCH & ASSOCIATES LTD.														
	Room		Sample Data														
Floor	Number	Use	Locations	Sample ID	Date DD/MM/YY	Asbestos Type	% of Asbestos	Tradename ACM Product	Condition	Priority	Description of Sample Location	Label	Functional Area Containing Asbestos	Potential for Disturbance	Recommended Action	Comments	
M	110	OFFICE	Sample Rep	S67-ASB58	20/10/2005	Chrysotile	20%	Fireproofing	Good	4	111-Mezz, spray-applied fireproofing along the west wall at the four-foot level on the horizontal enclosed structural steel	Yes	3-Yellow - Asbestos fireproofing on the structural columns	Low	Manage	The fireproofing is present on the enclosed structural columns	
M	111	CONFREN	Sample	S67-ASB58	20/10/2005	Chrysotile	20%	Fireproofing Plaster Compound	Moderate	1	111-Mezz, spray-applied fireproofing along the west wall at the four-foot level on the horizontal enclosed structural steel	Yes	3-Yellow - Asbestos fireproofing on the structural columns	Low/Mod	Cleanup	The fireproofing is present on the enclosed structural columns. HEPA vacuum the gap along the west wall to remove the visible spray applied fireproofing and apply caulking to close up the gap	
M	112	STORAGE	Sample	S67-ASB33	30/9/2005		None				112-Mezz, white plaster compound on the north wall						
M	112	STORAGE	Sample	S67-ASB34	30/9/2005		None	Ceiling Tiles			112-Mezz, 12" X 12" acoustical wall tiles						
M	112	STORAGE	Sample	S67-ASB56	20/10/2005	Chrysotile	40%	Transite Board	Good	4	112-Mezz, perforated panel board on the south wall	Yes	Other- Yellow - Transite board on wall	Low	Manage	South wall board	
M	113	STORAGE	Sample Rep	S67-ASB56	20/10/2005	Chrysotile	40%	Transite Board	Moderate	1	112-Mezz, perforated panel board on the south wall	Yes	2-Yellow - Asbestos on visible piping and/or ducting	Low/Mod	Dispose	Dispose of the pieces of transite board lying on the ductwork and HEPA vacuum the immediate area.	
M	113	STORAGE	Sample	S67-ASB57	20/10/2005	Chrysotile	1-5%	Vinyl Asbestos Tile	Good	4	113-Mezz, 1' X 1' cream/lt brown streak floor tile	Yes	6-Yellow - Asbestos floor covering	Low	Manage		
M	113.1	CORRIDOR	Sample Rep	S67-ASB57	20/10/2005	Chrysotile	1-5%	Vinyl Asbestos Tile	Good	4	113-Mezz, 1' X 1' cream/lt brown streak floor tile	Yes	6-Yellow - Asbestos floor covering	Low	Manage		
M	114	TRAP	Sample Rep	S67-ASB58	20/10/2005	Chrysotile	20%	Fireproofing	Good	4	111-Mezz, spray-applied fireproofing along the west wall at the four-foot level on the horizontal enclosed structural steel	Yes	3-Yellow - Asbestos fireproofing on the structural columns	Low	Manage	The fireproofing is present on the enclosed structural columns	
M	115	PIT														No accessible ACM	
M	116	LOCKER	Sample Rep	S67-ASB54	20/10/2005	Chrysotile	20%	Pipeline Fitting Compound	Good	3	MS8-Small HWHR pipeline fitting on the landing adj. pop dispenser	Yes	2-Yellow - Asbestos on visible piping and/or ducting	Low	Manage	Visible pipeline fittings are present	
M	116	LOCKER	Sample Rep	S67-ASB57	20/10/2005	Chrysotile	1-5%	Vinyl Asbestos Tile	Good	4	113-Mezz, 1' X 1' cream/lt brown streak floor tile	Yes	6-Yellow - Asbestos floor covering	Low	Manage		
M	117	MEN	Sample Rep	S67-ASB54	20/10/2005	Chrysotile	20%	Pipeline Fitting Compound	Good	3	MS8-Small HWHR pipeline fitting on the landing adj. pop dispenser	Yes	2-Yellow - Asbestos on visible piping and/or ducting	Low	Manage	Visible pipeline fittings are present	
M	118	FAN	Sample Rep	S67-ASB58	20/10/2005	Chrysotile	20%	Fireproofing	Moderate	4	111-Mezz, spray-applied fireproofing along the west wall at the four-foot level on the horizontal enclosed structural steel	Yes	3-Yellow - Asbestos fireproofing on the structural columns	Low	Manage	The fireproofing is present on the enclosed structural columns	
M	118	FAN	Sample Rep	S67-ASB57	20/10/2005	Chrysotile	1-5%	Vinyl Asbestos Tile	Good	4	113-Mezz, 1' X 1' cream/lt brown streak floor tile	Yes	6-Yellow - Asbestos floor covering	Low	Manage		
M	119	OFFICE	Sample Rep	S67-ASB58	20/10/2005	Chrysotile	20%	Fireproofing	Good	4	111-Mezz, spray-applied fireproofing along the west wall at the four-foot level on the horizontal enclosed structural steel	Yes	3-Yellow - Asbestos fireproofing on the structural columns	Low	Manage	The fireproofing is present on the enclosed structural columns within the ceiling space	
M	120	JANITOR														No accessible ACM	

TCU PLACE			BERSCH & ASSOCIATES LTD.													
	Room		Sample Data													
Floor	Number	Use	Locations	Sample ID	Date DD/MM/YY	Asbestos Type	% of Asbestos	Tradename ACM Product	Condition	Priority	Description of Sample Location	Label	Functional Area Containing Asbestos	Potential for Disturbance	Recommended Action	Comments
M	121	WASHRM	Sample Rep	S67-ASB54	20/10/2005	Chrysotile	20%	Pipeline Fitting Compound	Good	3	MS8-Small HWHR pipeline fitting on the landing adj. pop dispenser	Yes	2-Yellow - Asbestos on visible piping and/or ducting	Low	Manage	Visible pipeline fittings are present
M	122	LOCKER	Sample Rep	S67-ASB21	30/9/2005	Chrysotile	70%	Heat Shield Material	Good	3	BS8-Incandescent light fixture heat shield	Yes	5-Yellow - Asbestos heat deflector shield within the incandescent light fixture(s)	Low	Manage	
M	122	LOCKER	Sample Rep	S67-ASB54	20/10/2005	Chrysotile	20%	Pipeline Fitting Compound	Good	3	MS8-Small HWHR pipeline fitting on the landing adj. pop dispenser	Yes	2-Yellow - Asbestos on visible piping and/or ducting	Low	Manage	Visible pipeline fittings are present
M	122	LOCKER	Sample Rep	S67-ASB57	20/10/2005	Chrysotile	1-5%	Vinyl Asbestos Tile	Good	4	113-Mezz, 1' X 1' cream/lt brown streak floor tile	Yes	6-Yellow - Asbestos floor covering	Low	Manage	
M	122	LOCKER	Sample Rep	S67-ASB58	20/10/2005	Chrysotile	20%	Fireproofing	Good	4	111-Mezz, spray-applied fireproofing along the west wall at the four-foot level on the horizontal enclosed structural steel	Yes	3-Yellow - Asbestos fireproofing on the structural columns	Low	Manage	The fireproofing is present on the enclosed structural columns
M	123	LOUNGE	Sample Rep	S67-ASB58	20/10/2005	Chrysotile	20%	Fireproofing	Good	4	111-Mezz, spray-applied fireproofing along the west wall at the four-foot level on the horizontal enclosed structural steel	Yes	3-Yellow - Asbestos fireproofing on the structural columns	Low	Manage	The fireproofing is present on the enclosed structural columns
M	124	B/UGEN														No accessible ACM
M	200	CORRIDOR	Sample Rep	S67-ASB54	20/10/2005	Chrysotile	20%	Pipeline Fitting Compound	Good	3	MS8-Small HWHR pipeline fitting on the landing adj. pop dispenser	Yes	2-Yellow - Asbestos on visible piping and/or ducting	Low	Manage	Visible pipeline fittings are present
M	200	CORRIDOR	Sample Rep	S67-ASB21	30/9/2005	Chrysotile	70%	Heat Shield Material	Good	3	BS8-Incandescent light fixture heat shield	Yes	5-Yellow - Asbestos heat deflector shield within the incandescent light fixture(s)	Low	Manage	
M	200	CORRIDOR	Sample Rep	S67-ASB58	20/10/2005	Chrysotile	20%	Fireproofing	Good	4	111-Mezz, spray-applied fireproofing along the west wall at the four-foot level on the horizontal enclosed structural steel	Yes	3-Yellow - Asbestos fireproofing on the structural columns	Low	Manage	The fireproofing is present on the enclosed structural columns
M	S5	STAIRWELL	Sample Rep	S67-ASB21	30/9/2005	Chrysotile	70%	Heat Shield Material	Good	3	BS8-Incandescent light fixture heat shield	Yes	5-Yellow - Asbestos heat deflector shield within the incandescent light fixture(s)	Low	Manage	
M	S5	STAIRWELL	Sample Rep	S67-ASB41	20/10/2005	Chrysotile	30%	Pipeline Fitting Compound	Good	3	B100-Small pipeline fitting adj. BS-5 stairwell door	Yes	2-Yellow - Asbestos on visible piping and/or ducting	Low	Manage	Visible pipeline fittings are present
M	S6	STAIRWELL	Sample Rep	S67-ASB21	30/9/2005	Chrysotile	70%	Heat Shield Material	Good	3	BS8-Incandescent light fixture heat shield	Yes	5-Yellow - Asbestos heat deflector shield within the incandescent light fixture(s)	Low	Manage	
M	S7	STAIRWELL	Sample Rep	S67-ASB21	30/9/2005	Chrysotile	70%	Heat Shield Material	Good	3	BS8-Incandescent light fixture heat shield	Yes	5-Yellow - Asbestos heat deflector shield within the incandescent light fixture(s)	Low	Manage	
M	S8	STAIRWELL	Sample	S67-ASB54	20/10/2005	Chrysotile	20%	Pipeline Fitting Compound	Good	4	MS8-Small HWHR pipeline fitting on the landing adj. pop dispenser	Yes	2-Yellow - Asbestos on visible piping and/or ducting	Low	Manage	

TCU PLACE			BERSCH & ASSOCIATES LTD.													
			Sample Data													
Floor	Room Number	Use	Locations	Sample ID	Date DD/MM/YY	Asbestos Type	% of Asbestos	Tradename ACM Product	Condition	Priority	Description of Sample Location	Label	Functional Area Containing Asbestos	Potential for Disturbance	Recommended Action	Comments
M	S8	STAIRWELL	Sample Rep	S67-ASB58	20/10/2005	Chrysotile	20%	Fireproofing	Good	4	111-Mezz, spray-applied fireproofing along the west wall at the four-foot level on the horizontal enclosed structural steel	Yes	3-Yellow - Asbestos fireproofing on the structural columns	Low	Manage	The fireproofing is present on the enclosed structural columns
M	S8	STAIRWELL	Sample Rep	S67-ASB21	30/9/2005	Chrysotile	70%	Heat Shield Material	Good	3	BS8-Incandescent light fixture heat shield	Yes	5-Yellow - Asbestos heat deflector shield within the incandescent light fixture(s)	Low	Manage	
2	1	WESTLOUN														No accessible ACM
2	2	CTRLOUNG														No accessible ACM
2	3	EASTLOUN														No accessible ACM
2	4	MEN	Sample Rep	S67-ASB21	30/9/2005	Chrysotile	70%	Heat Shield Material	Good	3	BS8-Incandescent light fixture heat shield	Yes	5-Yellow - Asbestos heat deflector shield within the incandescent light fixture(s)	Low	Manage	
2	4	MEN	Sample Rep	S67-ASB30	30/9/2005	Chrysotile	70%	Pipeline Fitting Compound	Good	4	4-third floor, pipeline fitting along the east wall	Yes	1-Yellow - Asbestos on piping and/or ducting within ceiling space	Low	Manage	The pipeline fittings within the ceiling space are inaccessible to spray. Consider all fittings within the ceiling space to be ACM.
2	4	MEN	Sample Rep	S67-ASB31	30/9/2005	Chrysotile	30%	Fireproofing	Mod/Good	4	1-third floor, spray-applied fireproofing debris in privacy block wall adj. sink	Yes	3-Yellow - Asbestos fireproofing on the structural columns	Low	Manage	The fireproofing is within the ceiling space
2	4	MEN	Sample	S67-ASB65	26/10/2005		None	Ceiling Tiles			4-Second floor, 1' X 1' ceiling tile					
2	4.1	STORAGE	Sample Rep	S67-ASB15	29/9/2005	Chrysotile Crocidolite	40% 10%	Transite Pipe	Good	4	B1-Storm sewer transite drainpipe along the south wall adj. boiler #2	Yes	2-Yellow - Asbestos on visible piping and/or ducting	Low	Manage	Visible transite drainpipe is present insulated with foil-face insulation HEPA vacuum the fireproofing debris throughout the room on all surfaces. Avoid storing items in close proximity of the sprayed surfaces. The owner may consider removal of the fireproofing located on the exposed structural columns to prevent a re-occurring event.
2	4.1	STORAGE	Sample Rep	S67-ASB31	30/9/2005	Chrysotile	30%	Fireproofing	Poor/Mod	1	1-third floor, spray-applied fireproofing debris in privacy block wall adj. sink	Yes	3-Red - Asbestos fireproofing on the structural columns	Mod/High	Cleanup/Manage	
2	5	WOMEN	Sample Rep	S67-ASB15	29/9/2005	Chrysotile Crocidolite	40% 10%	Transite Pipe	Good	4	B1-Storm sewer transite drainpipe along the south wall adj. boiler #2	Yes	1-Yellow - Asbestos on piping and/or ducting within ceiling space	Low	Manage	The transite drainpipe is present within the ceiling space
2	5	WOMEN	Sample Rep	S67-ASB31	30/9/2005	Chrysotile	30%	Fireproofing	Mod/Good	4	1-third floor, spray-applied fireproofing debris in privacy block wall adj. sink	Yes	4-Yellow - Asbestos fireproofing remnants within the block wall cavity	Low	Manage	Remnants of asbestos spray-applied fireproofing are present in the pipe chase block wall along the west wall, the east toilet stall partition wall and west wall adj. the entrance.
2	6	JANITOR	Sample Rep	S67-ASB30	30/9/2005	Chrysotile	70%	Pipeline Fitting Compound	Good	3	4-third floor, pipeline fitting along the east wall	Yes	2-Yellow - Asbestos on visible piping and/or ducting	Low	Manage	Visible pipeline fittings are present
2	7	CORPRATE														No accessible ACM
2	8	LIGHTING														No accessible ACM
2	9	SOUND	Sample	S67-ASB64	26/10/2005		None	Ceiling Tiles			9-Second floor, 1' X 1' acoustical wall tiles with pinhole pattern					
2	10	CORPRATE														No accessible ACM

TCU PLACE			BERSCH & ASSOCIATES LTD.													
			Sample Data													
Floor	Room Number	Use	Locations	Sample ID	Date DD/MM/YY	Asbestos Type	% of Asbestos	Tradename ACM Product	Condition	Priority	Description of Sample Location	Label	Functional Area Containing Asbestos	Potential for Disturbance	Recommended Action	Comments
2	11	RECORD	Sample Rep	S67-ASB15	29/9/2005	Chrysotile Crocidolite	40% 10%	Transite Pipe	Good	4	B1-Storm sewer transite drainpipe along the south wall adj. boiler #2	Yes	2-Yellow - Asbestos on visible piping and/or ducting	Low	Manage	Visible transite drainpipe is present
2	11	RECORD	Sample Rep	S67-ASB31	30/9/2005	Chrysotile	30%	Fireproofing	Mod/Good	1	1-third floor, spray-applied fireproofing debris in privacy block wall adj. sink	Yes	3-Yellow - Asbestos fireproofing on the structural columns	Moderate	Repair	The fireproofing is located on the enclosed structural columns. At minimum re-fasten the poly that was applied to the areas of the previous removal. The owner may consider enclosing the areas in drywall in place of the poly to seal off the remaining fireproofing.
2	11	RECORD	Sample	S67-ASB66	26/10/2005	Chrysotile	70%	Parging Material	Good	3	11-Second floor, ductwork parging compound on the mezzanine	Yes	2-Yellow - Asbestos on visible piping and/or ducting	Low	Manage	
2	12	STORAGE	Sample Rep	S67-ASB30	30/9/2005	Chrysotile	70%	Pipeline Fitting Compound	Good	3	4-third floor, pipeline fitting along the east wall	Yes	2-Yellow - Asbestos on visible piping and/or ducting	Low	Manage	
2	12	STORAGE	Sample Rep	S67-ASB15	29/9/2005	Chrysotile Crocidolite	40% 10%	Transite Pipe	Good	4	B1-Storm sewer transite drainpipe along the south wall adj. boiler #2	Yes	2-Yellow - Asbestos on visible piping and/or ducting	Low	Manage	Visible transite drainpipe is present
2	12	STORAGE	Sample Rep	S67-ASB31	30/9/2005	Chrysotile	30%	Fireproofing	Mod/Good	4	1-third floor, spray-applied fireproofing debris in privacy block wall adj. sink	Yes	3-Yellow - Asbestos fireproofing on the structural columns	Low	Manage	The fireproofing is located on the enclosed structural columns
2	12	STORAGE	Sample Rep	S67-ASB66	26/10/2005	Chrysotile	70%	Parging Material	Moderate	1	11-Second floor, ductwork parging compound on the mezzanine	Yes	2-Yellow - Asbestos on visible piping and/or ducting	Low/Mod	Repair	Parging material is located on the ductwork. Repair the damaged areas across the air handling ductwork. Repair the parging on the top of the hot water tank adj. the ductwork east of room 13.
2	12	STORAGE	Sample	S67-ASB67	26/10/2005	Chrysotile	80%	Lineal Pipe Insulation	Good	3	12-Second floor, boiler exhaust stack insulation adj. 13 workshop	Yes	2-Yellow - Asbestos on visible piping and/or ducting	Low	Manage	
2	13	WORKSHOP	Sample Rep	S67-ASB15	29/9/2005	Chrysotile Crocidolite	40% 10%	Transite Pipe	Good	4	B1-Storm sewer transite drainpipe along the south wall adj. boiler #2	Yes	2-Yellow - Asbestos on visible piping and/or ducting	Low	Manage	Visible transite drainpipe is present
2	13	WORKSHOP	Sample Rep	S67-ASB30	30/9/2005	Chrysotile	70%	Pipeline Fitting Compound	Good	3	4-third floor, pipeline fitting along the east wall	Yes	2-Yellow - Asbestos on visible piping and/or ducting	Low	Manage	Visible pipeline fittings are present
2	13	WORKSHOP	Sample Rep	S67-ASB31	30/9/2005	Chrysotile	30%	Fireproofing	Mod/Good	4	1-third floor, spray-applied fireproofing debris in privacy block wall adj. sink	Yes	3-Yellow - Asbestos fireproofing on the structural columns	Low	Manage	The fireproofing is located on the enclosed structural columns
2	13	WORKSHOP	Sample Rep	S67-ASB66	26/10/2005	Chrysotile	70%	Parging Material	Moderate	1	11-Second floor, ductwork parging compound on the mezzanine	Yes	2-Yellow - Asbestos on visible piping and/or ducting	Low/Mod	Repair	Repair the damaged area on the ductwork in the room on the east side of the mechanical room
2	13	WORKSHOP	Sample Rep	S67-ASB67	26/10/2005	Chrysotile	80%	Lineal Pipe Insulation	Good	3	12-Second floor, boiler exhaust stack insulation adj. 13 workshop	Yes	2-Yellow - Asbestos on visible piping and/or ducting	Low	Manage	Visible boiler exhaust breeching is present
2	14	STORAGE	Sample Rep	S67-ASB15	29/9/2005	Chrysotile Crocidolite	40% 10%	Transite Pipe	Good	4	B1-Storm sewer transite drainpipe along the south wall adj. boiler #2	Yes	2-Yellow - Asbestos on visible piping and/or ducting	Low	Manage	Visible transite drainpipe is present
2	14	STORAGE	Sample Rep	S67-ASB30	30/9/2005	Chrysotile	70%	Pipeline Fitting Compound	Good	3	4-third floor, pipeline fitting along the east wall	Yes	2-Yellow - Asbestos on visible piping and/or ducting	Low	Manage	Visible pipeline fittings are present

TCU PLACE			BERSCH & ASSOCIATES LTD.														
	Room		Sample Data														
Floor	Number	Use	Locations	Sample ID	Date DD/MM/YY	Asbestos Type	% of Asbestos	Tradename ACM Product	Condition	Priority	Description of Sample Location	Label	Functional Area Containing Asbestos	Potential for Disturbance	Recommended Action	Comments	
2	14	STORAGE	Sample Rep	S67-ASB31	30/9/2005	Chrysotile	30%	Fireproofing	Mod/Good	4	1-third floor, spray-applied fireproofing debris in privacy block wall adj. sink	Yes	3-Yellow - Asbestos fireproofing on the structural columns	Low	Manage	The fireproofing is located on the enclosed structural columns	
2	15	SIDE BOX	Sample Rep	S67-ASB31	30/9/2005	Chrysotile	30%	Fireproofing	Mod/Good	1	1-third floor, spray-applied fireproofing debris in privacy block wall adj. sink	Yes	3-Yellow - Asbestos fireproofing on the structural columns	Moderate	Cleanup	The fireproofing is located on the enclosed vertical structural columns within the plenums behind the west side boxes. The label was placed on the access panel jambs on west wall. HEPA vacuum the visible fireproofing debris and apply a lag coating to the exposed areas.	
2	16	SIDE BOX	Sample Rep	S67-ASB31	30/9/2005	Chrysotile	30%	Fireproofing	Mod/Good	1	1-third floor, spray-applied fireproofing debris in privacy block wall adj. sink	Yes	3-Yellow - Asbestos fireproofing on the structural columns	Moderate	Cleanup	The fireproofing is located on the enclosed vertical structural columns within the plenums behind the east side boxes. The label was placed on the access panel jambs on east wall. HEPA vacuum the visible fireproofing debris and apply a lag coating to the exposed areas.	
2	FE	F. ELEV	Sample Rep	S67-ASB31	30/9/2005	Chrysotile	30%	Fireproofing	Moderate	4	1-third floor, spray-applied fireproofing debris in privacy block wall adj. sink	Yes	3-Yellow - Asbestos fireproofing on the structural columns	Low	Manage	The fireproofing is located on the enclosed structural columns	
2	S5	STAIRWELL	Sample Rep	S67-ASB21	30/9/2005	Chrysotile	70%	Heat Shield Material	Good	3	BS8-Incandescent light fixture heat shield	Yes	5-Yellow - Asbestos heat deflector shield within the incandescent light fixture(s)	Low	Manage		
2	S6	STAIRWELL	Sample Rep	S67-ASB21	30/9/2005	Chrysotile	70%	Heat Shield Material	Good	3	BS8-Incandescent light fixture heat shield	Yes	5-Yellow - Asbestos heat deflector shield within the incandescent light fixture(s)	Low	Manage		
2	S6	STAIRWELL	Sample Rep	S67-ASB58	20/10/2005	Chrysotile	20%	Fireproofing	Good	4	111-Mezz, spray-applied fireproofing along the west wall at the four-foot level on the horizontal enclosed structural steel	Yes	3-Yellow - Asbestos fireproofing on the structural columns	Low	Manage	The fireproofing is present on the enclosed structural columns	
3	1	WOMEN	Sample Rep	S67-ASB30	30/9/2005	Chrysotile	70%	Pipeline Fitting Compound	Good	3	4-third floor, pipeline fitting along the east wall	Yes	1-Yellow - Asbestos on piping and/or ducting within ceiling space	Low	Manage	The fittings are inaccessible to spray red. Consider all fittings in the ceiling space to be ACM.	
3	1	WOMEN	Sample	S67-ASB31	30/9/2005	Chrysotile	30%	Fireproofing	Moderate	1	1-third floor, spray-applied fireproofing debris in privacy block wall adj. sink	Yes	4-Yellow - Asbestos fireproofing remnants within the block wall cavity	Low	Cleanup/Manage	HEPA vacuum the fireproofing debris from the openings at the top of the privacy block wall adj. the sink. Fireproofing is present on the structural steel within the ceiling space.	
3	2	JANITOR	Sample Rep	S67-ASB30	30/9/2005	Chrysotile	70%	Pipeline Fitting Compound	Good	3	4-third floor, pipeline fitting along the east wall		2-Yellow - Asbestos on visible piping and/or ducting	Low	Manage		
3	3	MEN	Sample Rep	S67-ASB15	29/9/2005	Chrysotile Crocidolite	40% 10%	Transite Pipe	Good	4	B1-Storm sewer transite drainpipe along the south wall adj. boiler #2	Yes	1-Yellow - Asbestos on piping and/or ducting within ceiling space	Low	Manage	The inaccessible transite drainpipe is present within the ceiling space	

TCU PLACE			BERSCH & ASSOCIATES LTD.														
			Sample Data														
Floor	Room	Use	Locations	Sample ID	Date DD/MM/YY	Asbestos Type	% of Asbestos	Tradename ACM Product	Condition	Priority	Description of Sample Location	Label	Functional Area Containing Asbestos	Potential for Disturbance	Recommended Action	Comments	
3	3	MEN	Sample Rep	S67-ASB30	30/9/2005	Chrysotile	70%	Pipeline Fitting Compound	Good	4	4-third floor, pipeline fitting along the east wall	Yes	1-Yellow - Asbestos on piping and/or ducting within ceiling space	Low	Manage	A few fittings were sprayed red above the access panel and a few were inaccessible. Consider all fittings in the ceiling space to be ACM.	
3	4	MECH	Sample	S67-ASB30	30/9/2005	Chrysotile	70%	Pipeline Fitting Compound	Good	3	4-third floor, pipeline fitting along the east wall	Yes	2-Yellow - Asbestos on visible piping and/or ducting	Low	Manage	Visible pipeline fittings are present	
3	5	WESTWELL	Sample Rep	S67-ASB30	30/9/2005	Chrysotile	70%	Pipeline Fitting Compound	Good	3	4-third floor, pipeline fitting along the east wall	Yes	1-Yellow - Asbestos on piping and/or ducting within ceiling space	Low	Manage	The fittings are inaccessible to spray red. Consider all fittings in the ceiling space to be ACM.	
3	5	WESTWELL	Sample Rep	S67-ASB31	30/9/2005	Chrysotile	30%	Fireproofing	Moderate	3	1-third floor, spray-applied fireproofing debris in privacy block wall adj. sink	Yes	3-Red - Asbestos fireproofing on the structural columns	Low/Mod	Manage	Fireproofing debris was observed within the ceiling grid track. Personnel accessing the ceiling space are required to wear the proper PPE & procedures to access the ceiling space.	
3	6	WESTLOUN	Sample Rep	S67-ASB31	30/9/2005	Chrysotile	30%	Fireproofing	Moderate	4	1-third floor, spray-applied fireproofing debris in privacy block wall adj. sink	No	3-Yellow - Asbestos fireproofing on the structural columns	Low	Manage	The fireproofing is located on the structural columns within the ceiling space. Did not label because of no door jamb.	
3	7	CNTRLOUN	Sample Rep	S67-ASB31	30/9/2005	Chrysotile	30%	Fireproofing	Moderate	4	1-third floor, spray-applied fireproofing debris in privacy block wall adj. sink	No	3-Yellow - Asbestos fireproofing on the structural columns	Low	Manage	The fireproofing is located on the structural columns within the ceiling space. Did not label because of no door jamb.	
3	8	EASTLOUN	Sample Rep	S67-ASB31	30/9/2005	Chrysotile	30%	Fireproofing	Moderate	4	1-third floor, spray-applied fireproofing debris in privacy block wall adj. sink	No	3-Yellow - Asbestos fireproofing on the structural columns	Low	Manage	The fireproofing is located on the structural columns within the ceiling space. Did not label because of no door jamb.	
3	9	EASTWELL	Sample Rep	S67-ASB30	30/9/2005	Chrysotile	70%	Pipeline Fitting Compound	Good	3	4-third floor, pipeline fitting along the east wall	Yes	1-Yellow - Asbestos on piping and/or ducting within ceiling space	Low	Manage	The fittings are inaccessible to spray red. Consider all fittings in the ceiling space to be ACM.	
3	9	EASTWELL	Sample Rep	S67-ASB31	30/9/2005	Chrysotile	30%	Fireproofing	Moderate	1	1-third floor, spray-applied fireproofing debris in privacy block wall adj. sink	Yes	3-Red - Asbestos fireproofing on the structural columns	Moderate	Cleanup/Manage	Fireproofing debris was observed within the ceiling grid track. Personnel accessing the ceiling space are required to wear the proper PPE & procedures to access the ceiling space. Recommend HEPA vacuuming the ceiling space of asbestos debris and bird feces.	
3	10	STORAGE														No accessible ACM	
3	11	BALCONY	Sample Rep	S67-ASB30	30/9/2005	Chrysotile	70%	Pipeline Fitting Compound	Good	3	4-third floor, pipeline fitting along the east wall	Yes	2-Yellow - Asbestos on visible piping and/or ducting	Low	Manage	1 fitting is present in the northwest corner within the ductwork chase. 1 fitting present in the northeast chase. Put label on access door to chase.	

TCU PLACE			BERSCH & ASSOCIATES LTD.													
			Sample Data													
Floor	Room	Use	Locations	Sample ID	Date DD/MM/YY	Asbestos Type	% of Asbestos	Tradename ACM Product	Condition	Priority	Description of Sample Location	Label	Functional Area Containing Asbestos	Potential for Disturbance	Recommended Action	Comments
3	12	SIDE BOX	Sample Rep	S67-ASB31	30/9/2005	Chrysotile	30%	Fireproofing	Poor/Mod	1	1-third floor, spray-applied fireproofing debris in privacy block wall adj. sink	Yes	3-Yellow - Asbestos fireproofing on the structural columns	Moderate	Cleanup/Manage	Fireproofing debris was observed within the plenum behind the seating area in each of the side boxes along the west side. HEPA vacuum the area adjacent the curtain track where the curtains have brushed against the fireproofing on the structural column. The curtains and surface below the curtains located within the plenums require HEPA vacuuming also. Recommend either taking the curtains down or ensuring they are inoperable to prevent disturbance to the fireproofing on the columns adjacent the curtain tracks. Fireproofing is also present on the enclosed vertical columns within each plenum. Apply a lag coating to the exposed fireproofing within the plenums
3	13	SIDE BOX	Sample Rep	S67-ASB31	30/9/2005	Chrysotile	30%	Fireproofing	Poor/Mod	1	1-third floor, spray-applied fireproofing debris in privacy block wall adj. sink	Yes	3-Yellow - Asbestos fireproofing on the structural columns	Moderate	Cleanup/Manage	Fireproofing debris was observed within the plenum behind the seating area in each of the side boxes along the east side. HEPA vacuum the area adjacent the curtain track where the curtains have brushed against the fireproofing on the structural column. The curtains and surface below the curtains located within the plenums require HEPA vacuuming also. Recommend either taking the curtains down or ensuring they are inoperable to prevent disturbance to the fireproofing on the columns adjacent the curtain tracks. Fireproofing is also present on the enclosed vertical columns within each plenum. Apply lag coating to the exposed fireproofing within the plenums
3	S1	STAIRWELL	Sample Rep	S67-ASB30	30/9/2005	Chrysotile	70%	Pipeline Fitting Compound	Good	3	4-third floor, pipeline fitting along the east wall	Yes	2-Yellow - Asbestos on visible piping and/or ducting	Low	Manage	1 visible fitting is present
3	S5	STAIRWELL	Sample Rep	S67-ASB15	29/9/2005	Chrysotile Crocidolite	40% 10%	Transite Pipe	Good	4	B1-Storm sewer transite drainpipe along the south wall adj. boiler #2	Yes	2-Yellow - Asbestos on visible piping and/or ducting	Low	Manage	Visible transite drainpipe is present
3	S6	STAIRWELL	Sample Rep	S67-ASB15	29/9/2005	Chrysotile Crocidolite	40% 10%	Transite Pipe	Good	4	B1-Storm sewer transite drainpipe along the south wall adj. boiler #2	Yes	2-Yellow - Asbestos on visible piping and/or ducting	Low	Manage	Visible transite drainpipe is present

