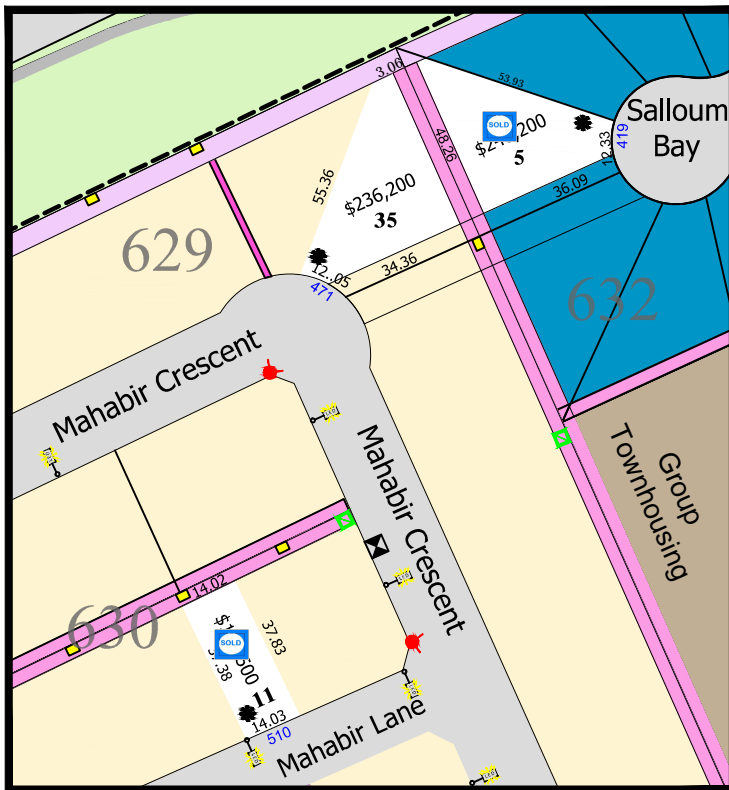
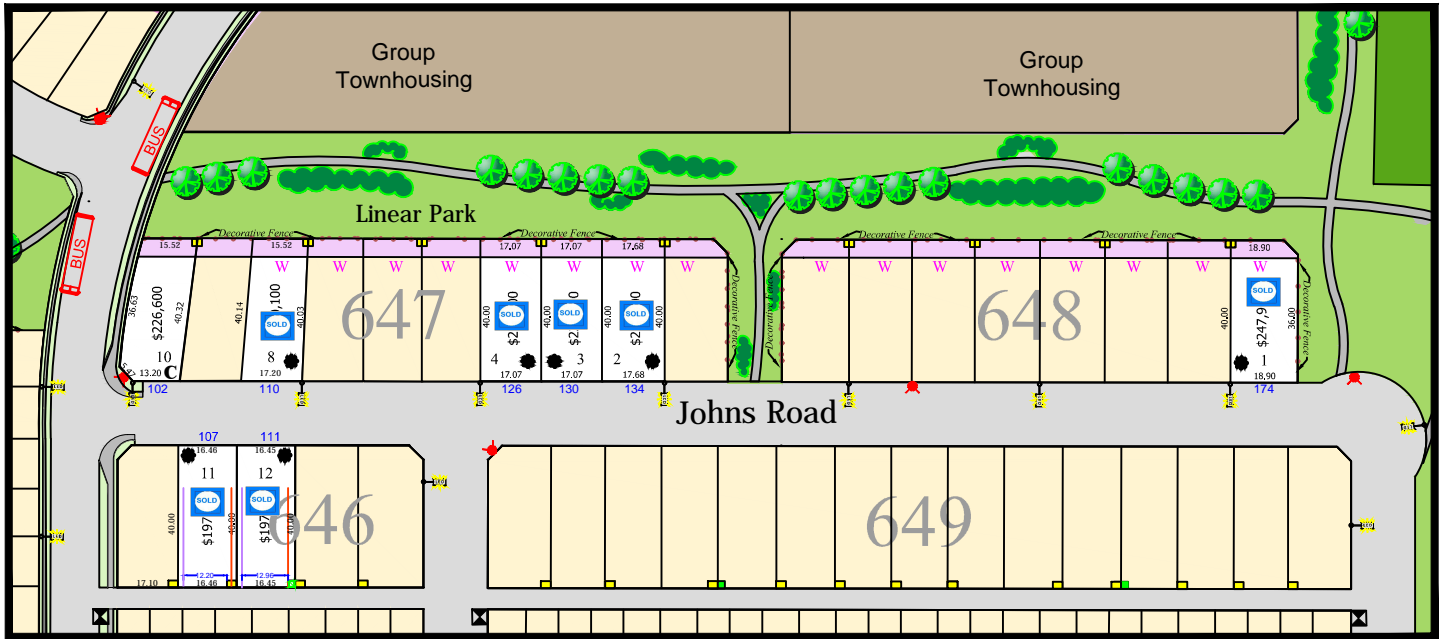




EVERGREEN

Returned Lot Map Johns Road, Mahabir Crescent, Lane, Salloum Bay

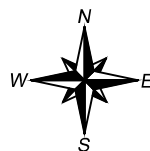


Legend:

- Civic Addresses 1234
- Corner Garage Location C
- Easement 1.5m
- Easement 3m
- Easement 5m
- Easment Other
- Previous Lot Draw
- Transformer(2.0m x 2.0m)
- Utility Pedestal(2.8x2.0)
- Pre-designated Lots
(Residential Care Home - Type II;
Daycare Centre; Preschool)
- Garage Pad Maximum Width
(Between Utilities) ←6.14→
- Underground Gas Line accomodation
- Underground Power Line accomodation
- Fire Hydrant
- Lots with no slope req.
- Garage Location
- LED Light Standard
- Mail Boxes
- Walk Out
- Temporary Water Circulator
- Chain Fence
- Decorative Fence
- Masonry Fence
- Proposed Bus stops



AF Saskatoon Land - March 2016



Note: The Saskatoon Land does not guarantee the accuracy of this plan. Lot dimensions and the location of other features are compiled from available information and are subject to change without notice. Park and buffer renderings are for illustrative purposes only and does not represent what will be constructed. To ensure accuracy, please refer to the Registered Plan of Survey. Distances are in meters unless shown otherwise. Do not scale.