

## Lot Draw Addendum

For:

### Parkridge Extension

### Residential Lot Draw

---

NEIGHBOURHOOD: Parkridge

Addendum No.: 1.

Page: 1 of 2.

Date: May 15, 2015.

Addition to the original Lot Draw Package.

### Parkridge Extension – Registered Feature Plan

---

1. **An Additional Registered Feature Plan** - An additional registered feature plan indicating the location of a 3.0 meter easement that affects Block 891, Lots 22 and 23 is attached.

Note: The easement location is reflected on the Lot Information Map, however, was not indicated on the previous Registered Feature Plan.

# PARKRIDGE

DESCRIPTIVE PLAN - TYPE II

SHOWING

## FEATURE UTILITY RIGHT OF WAY

WITHIN

LOTS 22-23, BLOCK 891

PLAN NO. 102177862

S.W.1/4 SEC.26

TWP. 36 RGE. 6 W.3MER.

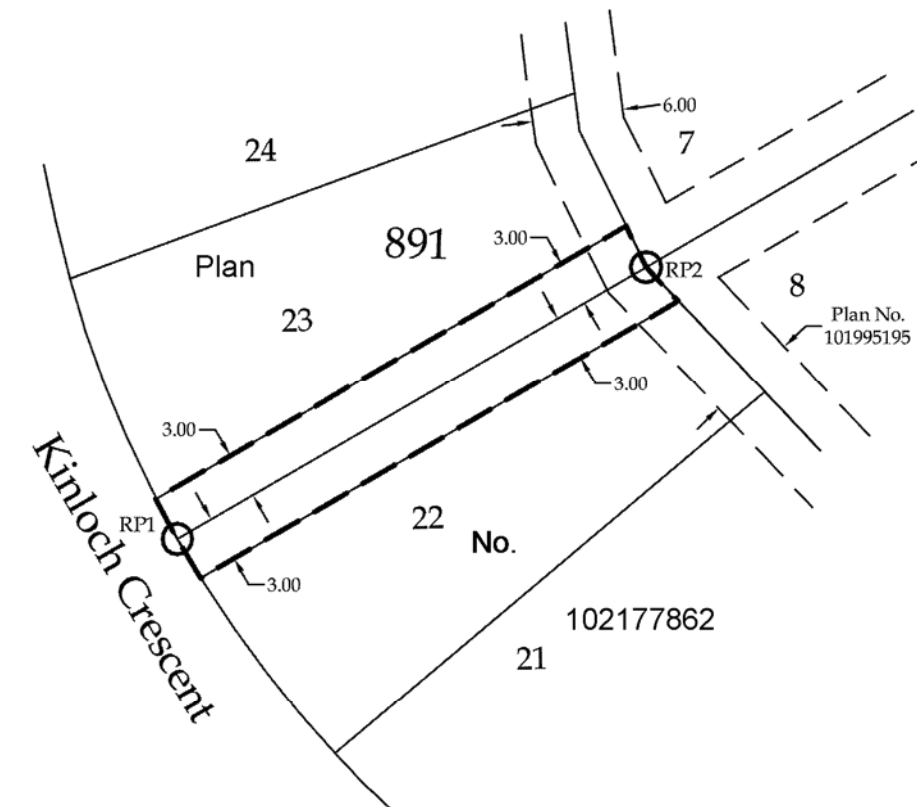
CITY OF SASKATOON

SASKATCHEWAN

BY: BLAKE WAHL, S.L.S.

DATE: MAY 4TH, 2015

SCALE: 1:500



### LEGEND:

REFERENCE POINTS ARE SHOWN THUS: ○ RP1 ○ RP2

MEASUREMENTS ARE IN METRES AND DECIMALS THEREOF.

AREA TO BE APPROVED IS OUTLINED BY A HEAVY DASHED LINE.

EXTENSIONS OF PARCELS AFFECTED BY THIS FEATURE ARE 0 UNLESS SHOWN OTHERWISE.

THE DATUM USED: NAD83 (CSRS)

THE PROJECTION USED: UTM ZONE 13N EXTENDED

RP1: NORTHING 5775836.395 ; EASTING 379315.389

RP2: NORTHING 5775853.620 ; EASTING 379346.823

RP COORDINATES ARE DERIVED AS OF NOVEMBER 27TH, 2014

GEO-REFERENCED POINTS DERIVED FROM GNSS OBSERVATIONS AND PROCESSED WITH THE NRCAN PPP SERVICE.

DWG: 00140-13-DPII-R1