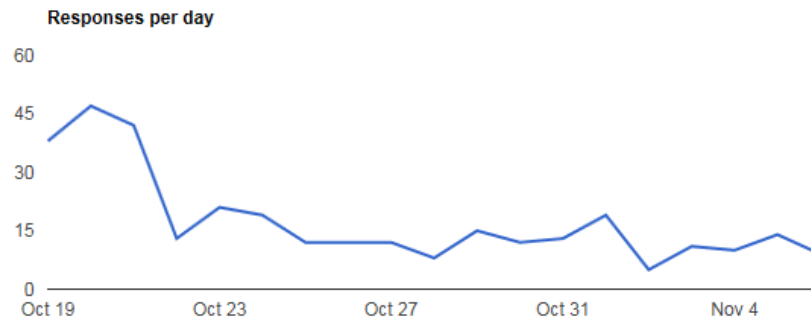
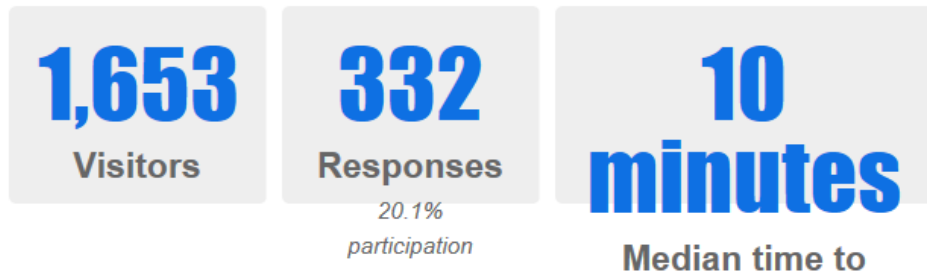


# Online Budget Consultation Report

For the period October 19 to November 06, 2015

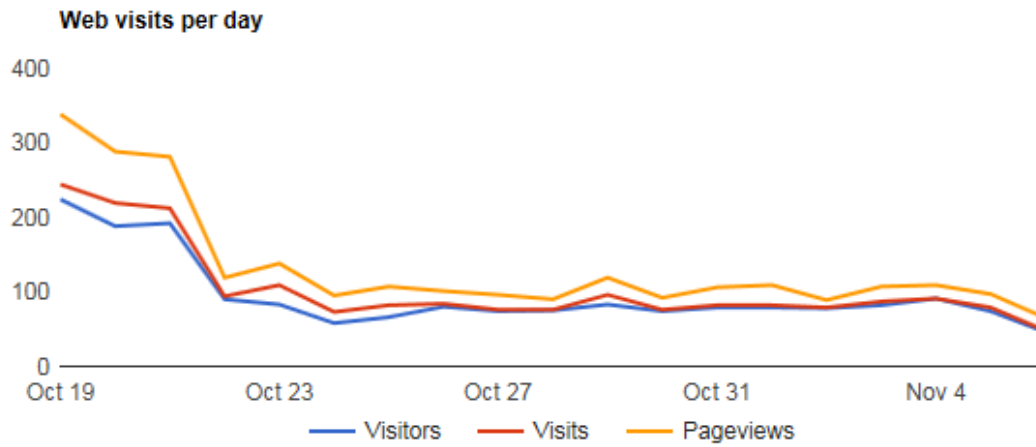
Prepared by Open North for: City of Saskatoon



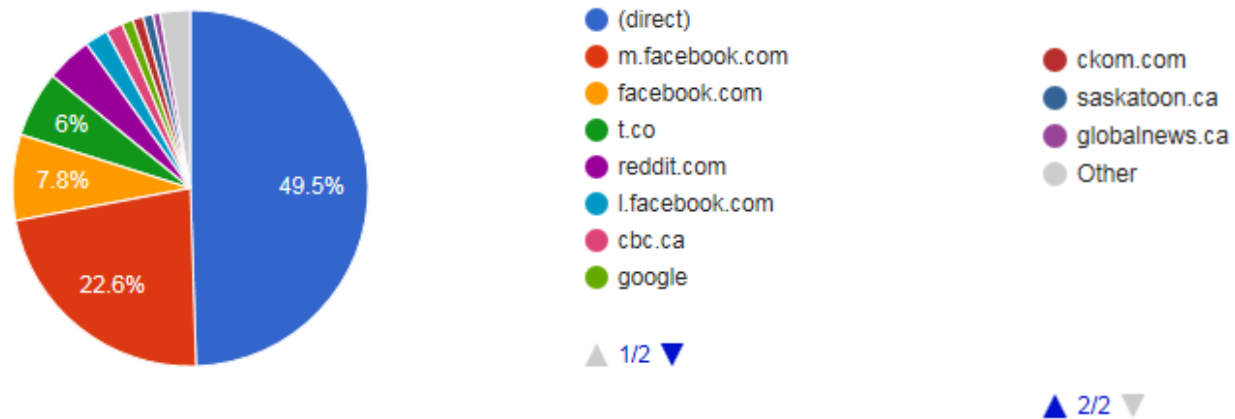
**As of Friday, Nov 6 – 3:30pm**

- The **dark gray** bar represents the # of people who chose to leave funding the same as the proposed budget.
- The **light gray** bars represent the # of people who chose to increase or decrease the funding from the proposed budget.
- The numbers shown above the bars shows the # of responses.
- The **thin vertical line** shows the average of all responses.





### Web traffic sources

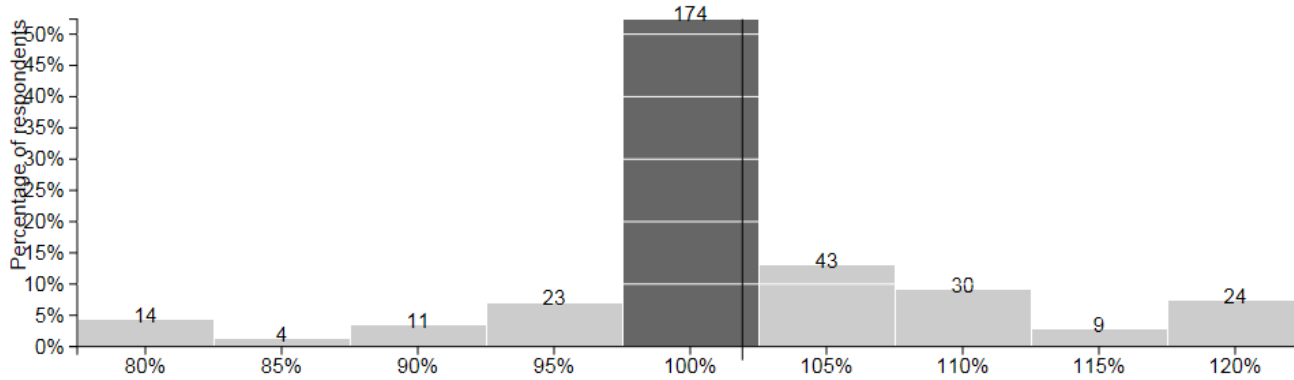


- The **dark gray** bar represents the # of people who chose to leave funding the same as the proposed budget.
- The **light gray** bars represent the # of people who chose to increase or decrease the funding from the proposed budget.
- The numbers shown above the bars shows the # of responses.
- The **thin vertical line** shows the average of all responses.



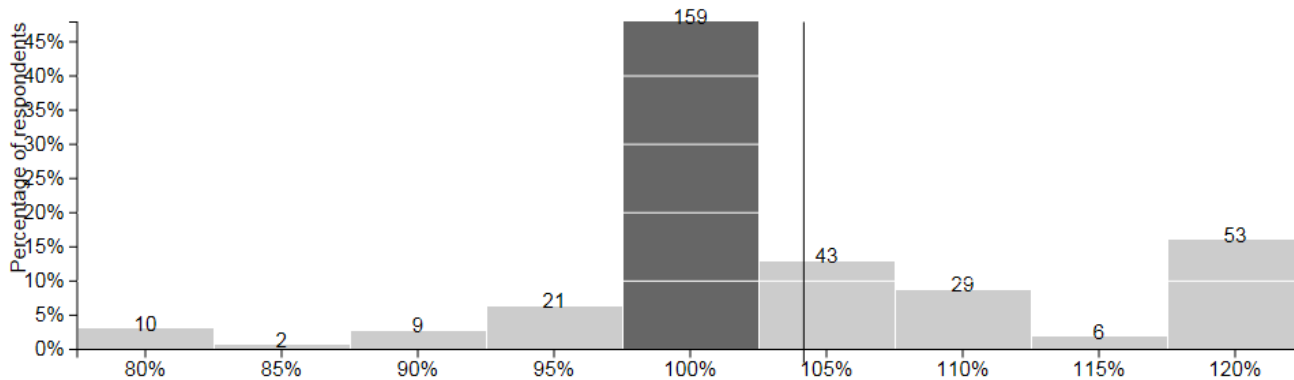
## Road Maintenance

1 How would you adjust your property tax funding for Road Maintenance in the city?



## Snow & Ice Management

2 How would you adjust your property tax funding for Snow & Ice Management in the city?

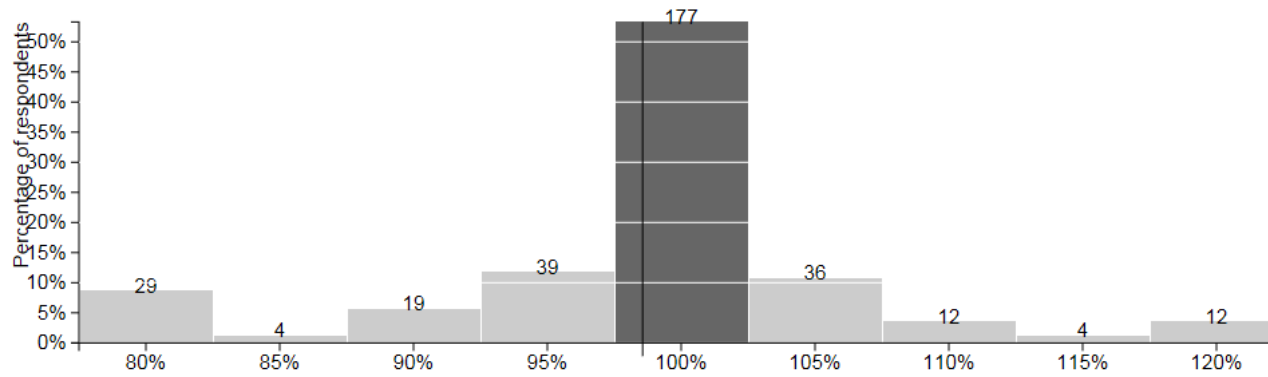


- The **dark gray** bar represents the # of people who chose to leave funding the same as the proposed budget.
- The **light gray** bars represent the # of people who chose to increase or decrease the funding from the proposed budget.
- The numbers shown above the bars shows the # of responses.
- The **thin vertical line** shows the average of all responses.



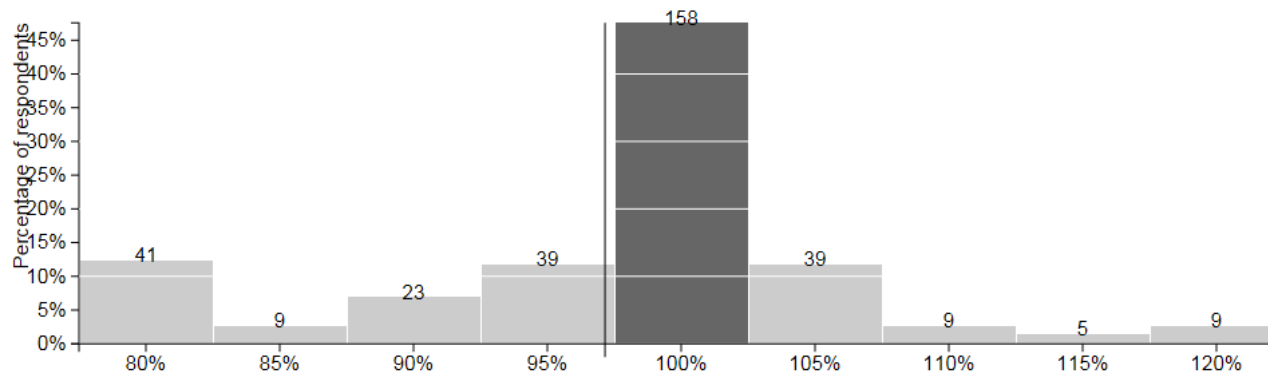
## Traffic Management

### 3 How would you adjust your property tax funding for Traffic Management in Saskatoon?



## Police

### 4 How would you adjust your property tax funding for the Saskatoon Police Service?

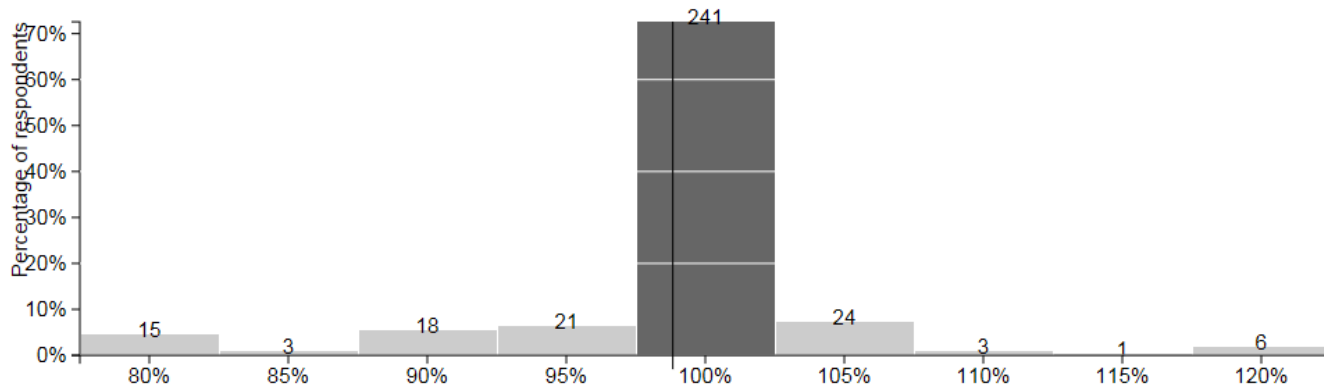


- The **dark gray** bar represents the # of people who chose to leave funding the same as the proposed budget.
- The **light gray** bars represent the # of people who chose to increase or decrease the funding from the proposed budget.
- The numbers shown above the bars shows the # of responses.
- The **thin vertical line** shows the average of all responses.



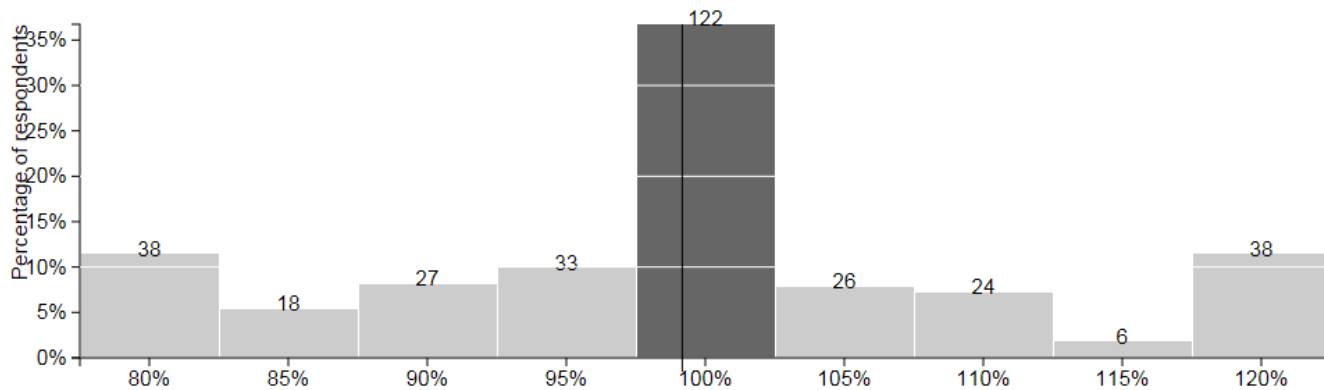
## Fire

5 How would you adjust your property tax funding for the Saskatoon Fire Department?



## Transit/Access Transit

6 How would you adjust your property tax funding for Saskatoon Transit?

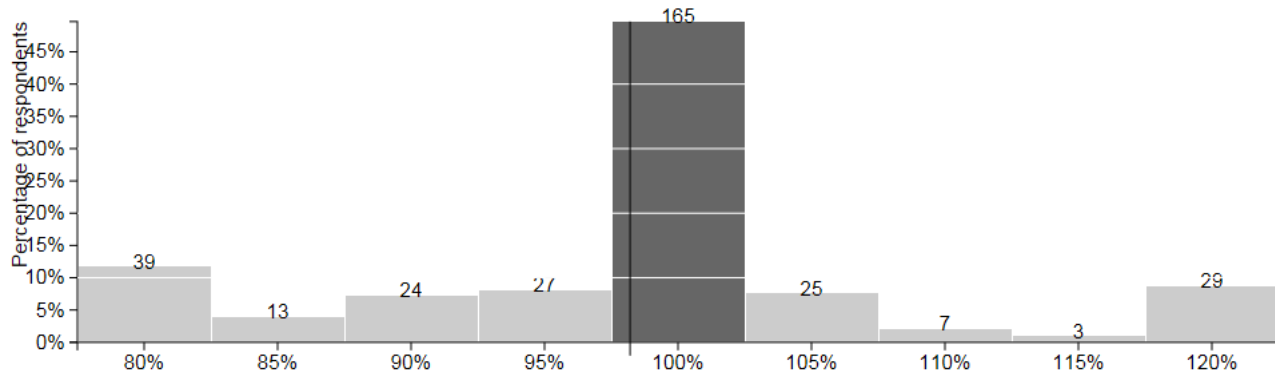


- The **dark gray** bar represents the # of people who chose to leave funding the same as the proposed budget.
- The **light gray** bars represent the # of people who chose to increase or decrease the funding from the proposed budget.
- The numbers shown above the bars shows the # of responses.
- The **thin vertical line** shows the average of all responses.



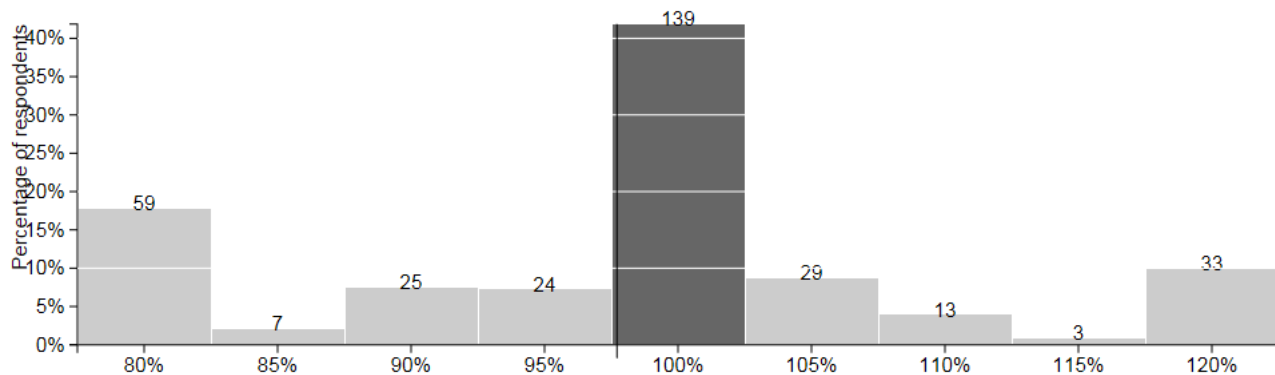
## Planning for Growth & Development

7 How would you adjust your property tax funding for Planning & Growth Development in Saskatoon?



## Community Grants & Affordable Housing

8 How would you adjust your property tax funding for Community Grants & Affordable Housing?

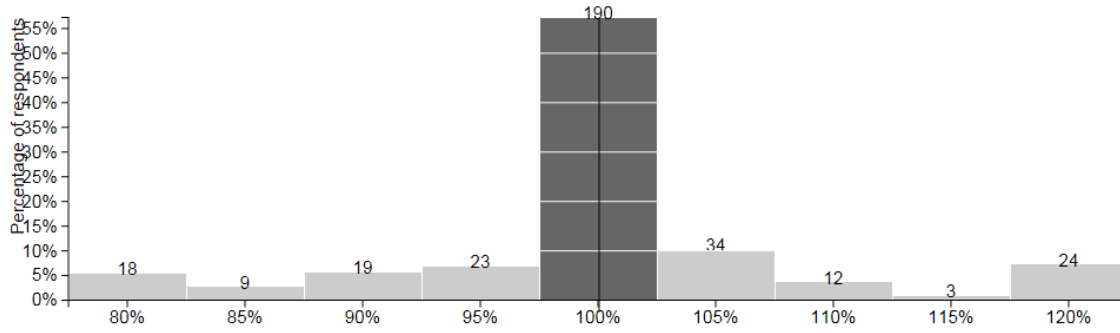


- The **dark gray** bar represents the # of people who chose to leave funding the same as the proposed budget.
- The **light gray** bars represent the # of people who chose to increase or decrease the funding from the proposed budget.
- The numbers shown above the bars shows the # of responses.
- The **thin vertical line** shows the average of all responses.



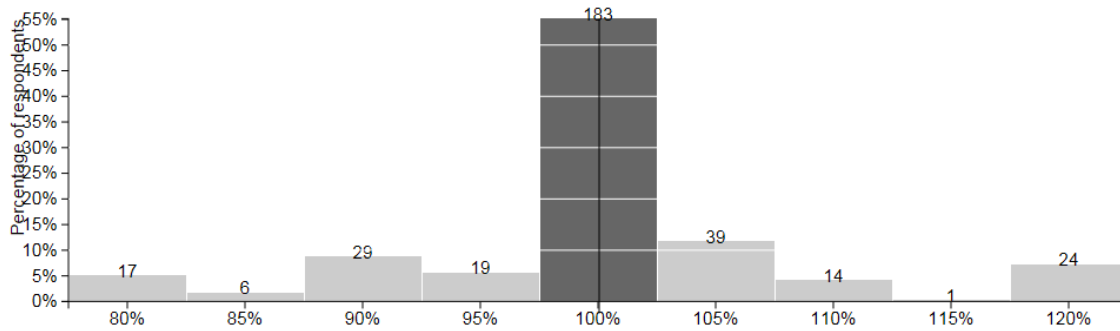
## Garbage & Waste Reduction

9 How would you adjust your property tax funding for Garbage & Waste Reduction programs and services in Saskatoon?



## Parks

10 How would you adjust your property tax funding for the Parks program in Saskatoon?

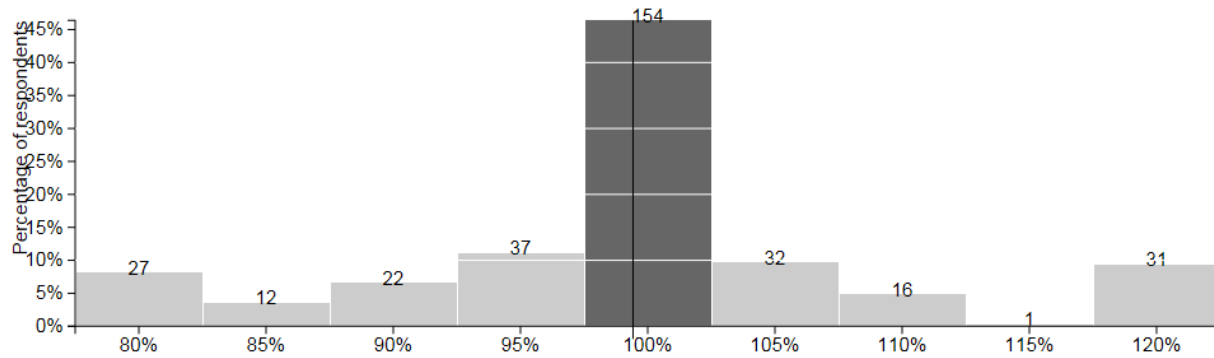


- The **dark gray** bar represents the # of people who chose to leave funding the same as the proposed budget.
- The **light gray** bars represent the # of people who chose to increase or decrease the funding from the proposed budget.
- The numbers shown above the bars shows the # of responses.
- The **thin vertical line** shows the average of all responses.



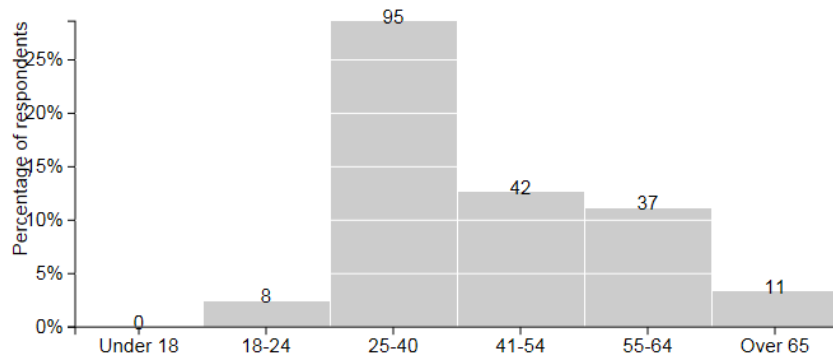
## Recreation & Culture

11 How would you adjust your property tax funding for Recreation & Culture in Saskatoon?



## Tell us about yourself

12 Age

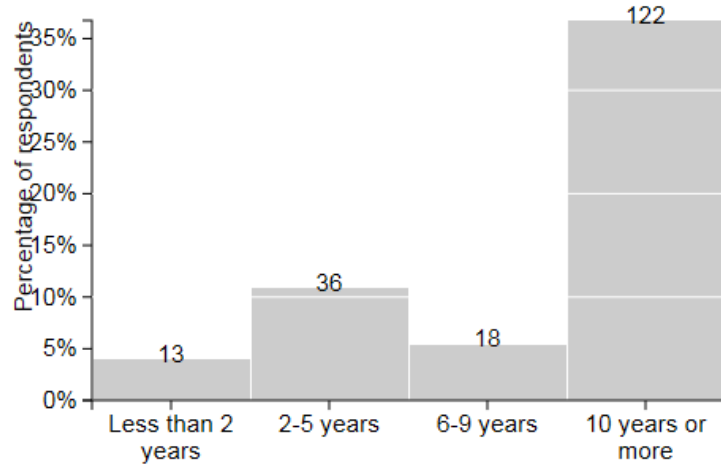


- The **dark gray** bar represents the # of people who chose to leave funding the same as the proposed budget.
- The **light gray** bars represent the # of people who chose to increase or decrease the funding from the proposed budget.
- The numbers shown above the bars shows the # of responses.
- The **thin vertical line** shows the average of all responses.

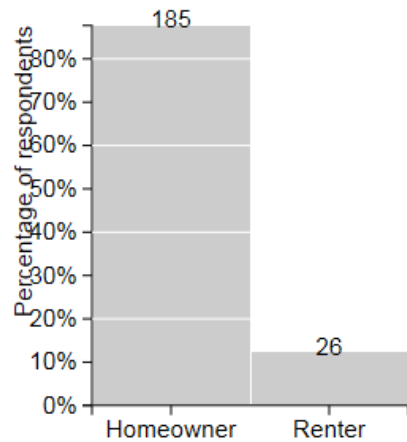




### 13 Residency



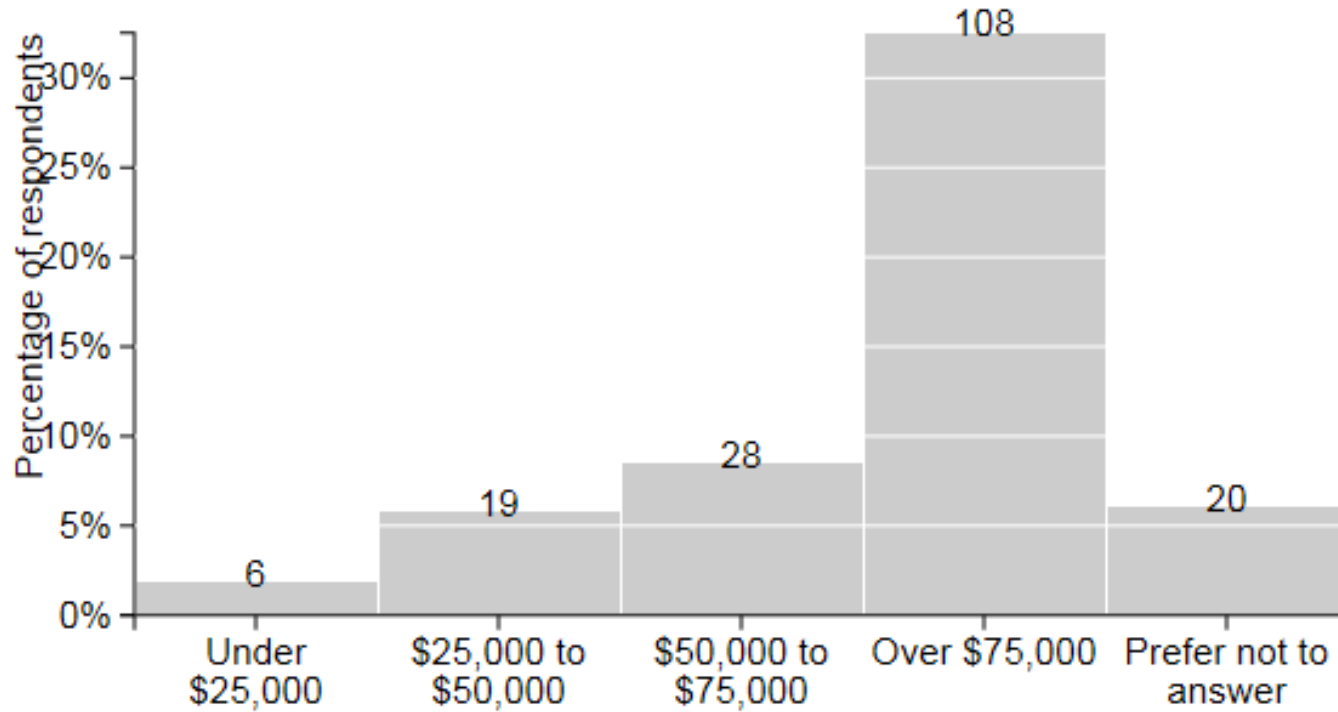
### 14 Status



- The **dark gray** bar represents the # of people who chose to leave funding the same as the proposed budget.
- The **light gray** bars represent the # of people who chose to increase or decrease the funding from the proposed budget.
- The numbers shown above the bars shows the # of responses.
- The **thin vertical line** shows the average of all responses.



## 15 Household Income



- The **dark gray** bar represents the # of people who chose to leave funding the same as the proposed budget.
- The **light gray** bars represent the # of people who chose to increase or decrease the funding from the proposed budget.
- The numbers shown above the bars shows the # of responses.
- The **thin vertical line** shows the average of all responses.

