

WELCOME

Circle Drive

Clancy Drive to Laurier Drive
Functional Plan

Open House #1

June 19, 2019

4:00pm – 7:00pm

Shaw Centre



WELCOME

Circle Drive

Clancy Drive to Laurier Drive
Functional Plan

Open House #1

June 19, 2019

4:00pm – 7:00pm

Shaw Centre



Circle Drive

Clancy Drive to Laurier Drive - Functional Plan

Open House Purpose

- Introduce the project and study process.
- Share what we know about the traffic issues along Circle Drive and 22nd Street in the study area.
- Gather the community's input to upgrade Circle Drive and 22nd Street in the study area.

Open House Format

- This open house is an informal drop-in format, there will be no formal presentation.
- Please view the project information, ask our staff questions.
- Please complete the comment sheet, either at this meeting or on the project website: www.saskatoon.ca/engage



Circle Drive

Clancy Drive to Laurier Drive - Functional Plan

Study Background

- Circle Drive is a core route (urban ring road) in the City of Saskatoon's road network.
- Circle Drive supports travel within and through the City.
- In response to increasing congestion levels and safety concerns, the City continues to prepare plans to upgrade Circle Drive to a freeway standard.



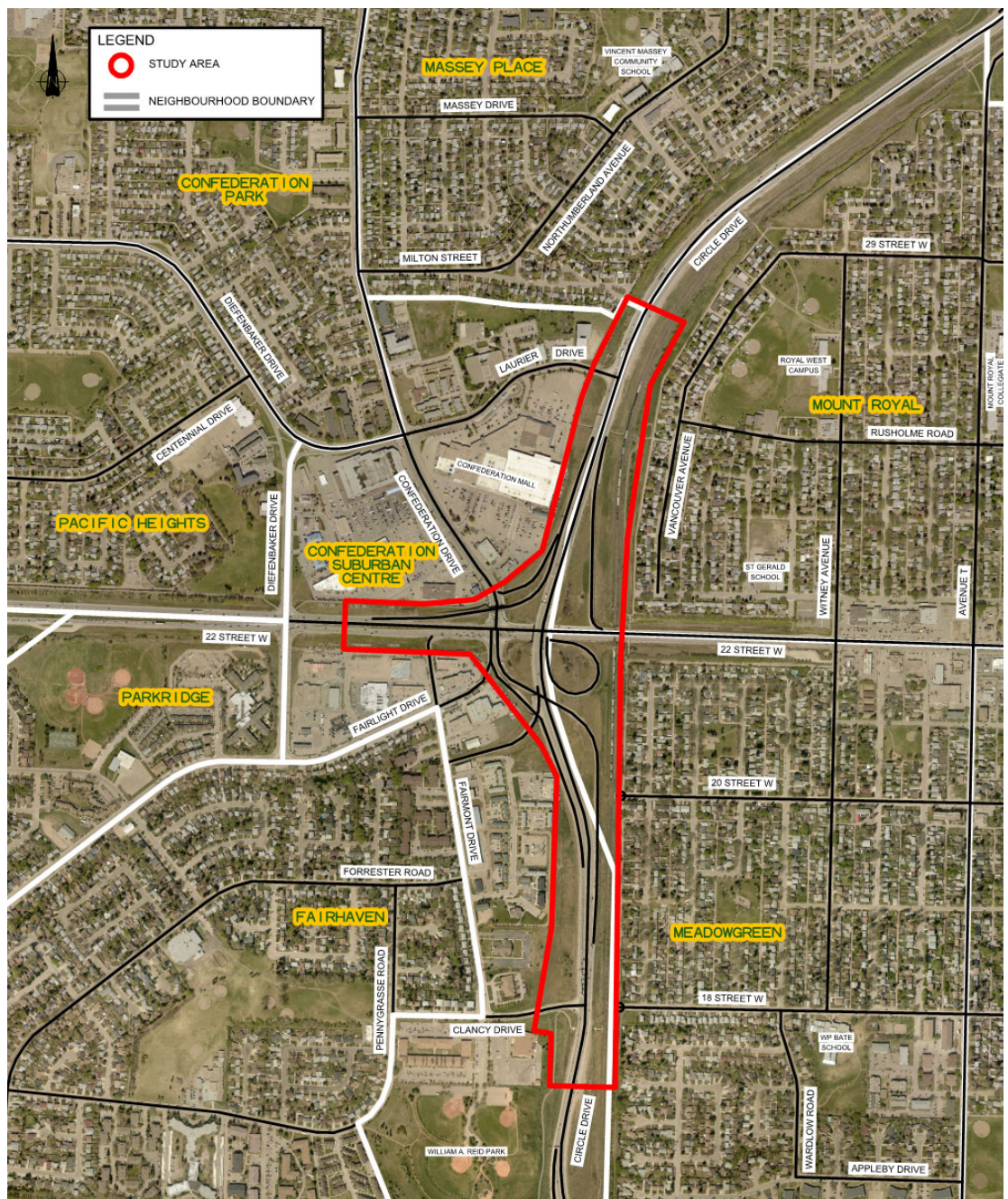
Circle Drive

Clancy Drive to Laurier Drive - Functional Plan

Study Purpose

- Prepare a long-term functional plan for Circle Drive from Clancy Drive to Laurier Drive.
- Ease traffic congestion and improve safety through the study area.

Study Area



Circle Drive

Clancy Drive to Laurier Drive - Functional Plan

Study Goals

- Remove the traffic signals at Clancy and Laurier Drives and upgrade Circle Drive to free-flow standards.
- Retain or improve pedestrian and cyclist movements across Circle Drive.

Study Objectives

- Achieve free-flow travel along Circle Drive by removing the left-hand exits and entries.
- Retain the current turning movements at both locations.
- Improve performance of the Circle Drive interchange with 22nd Street West.
- Improve performance of the 22nd Street intersection with Confederation Drive.



Circle Drive

Clancy Drive to Laurier Drive - Functional Plan

Study Process and Timeline

Project Initiation

- Open House #1 – June 2019
- Consult with community
- Gather information

We are here

Develop Options

- Prepare alternative plans
- Evaluate performance & impacts
- Select preferred plan

Preferred Plan

- Open House #2 – Winter 2019
- Invite public comment
- Finalize plan



Circle Drive

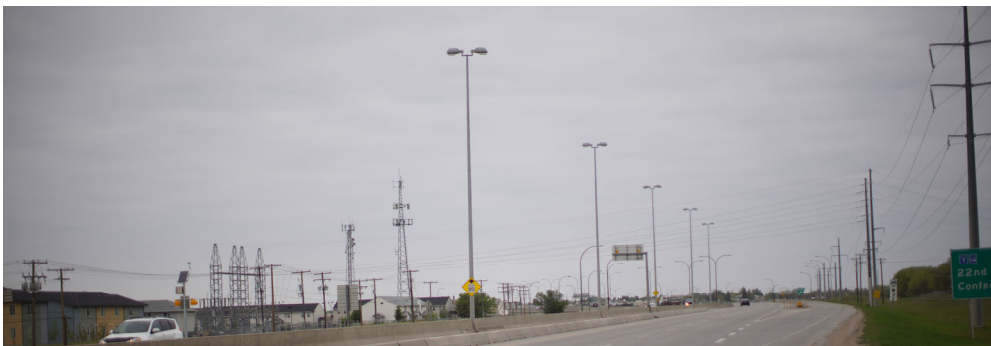
Clancy Drive to Laurier Drive - Functional Plan

Existing Conditions & Constraints

1. Driveways onto Laurier Drive close to Circle Drive, make it difficult to convert intersection to interchange.
2. Confederation Transit Hub should retain good access to the road network.
3. Proximity of CN Rail Overpass crossing 22nd Street significantly constrains the approach to (and upgrading of) the Circle Drive interchange.



4. Telecommunications tower near the interchange constrains upgrading options.
5. The SaskTel building protrudes into the corridor and is a significant constraint.
6. Power substation is a hub for major transmission lines, affecting upgrading options and costs.
7. Overhead Saskatoon Light & Power transmission lines would be relocated for most upgrading options.



Circle Drive

Clancy Drive to Laurier Drive - Functional Plan

Existing Conditions & Constraints

- 8.** Rail crossing underpass near 11th Street limits the Circle Drive cross-section to four lanes.



- 9.** Three pedestrian crossings, under CN Rail and Circle Drive, will need to be modified to accommodate all upgrading options. Pedestrian overpasses preferred.



- 10.** Turning from southbound Circle Drive to eastbound 22nd Street follows local streets (Jughandle design).



Circle Drive

Clancy Drive to Laurier Drive - Functional Plan

Existing Conditions & Constraints

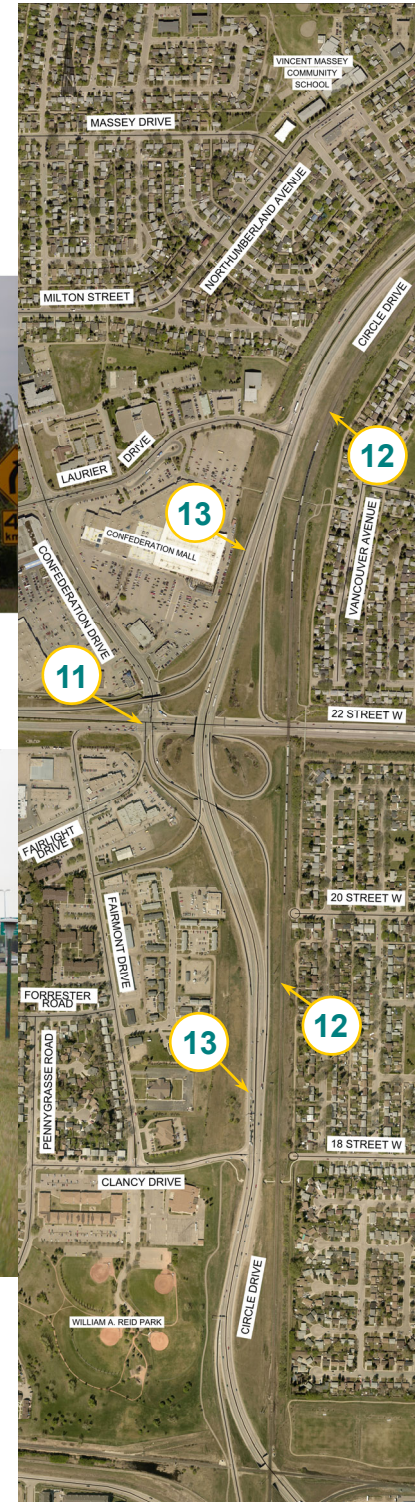
- 11.** Confederation Drive/22nd Street intersection is too close to Circle Drive, combines 3 turning movements off/on Circle Drive with access to Confederation Mall, and significantly constrains all upgrading options.



- 12.** CN Rail line travels north-south parallel to the east side of Circle Drive and constrains roadway widening.



- 13.** Short spacing between Laurier Drive – 22nd Street – Clancy Drive (800m & 600m respectively) is far below desired 1500m spacing for good freeway operation.



Circle Drive

Clancy Drive to Laurier Drive - Functional Plan

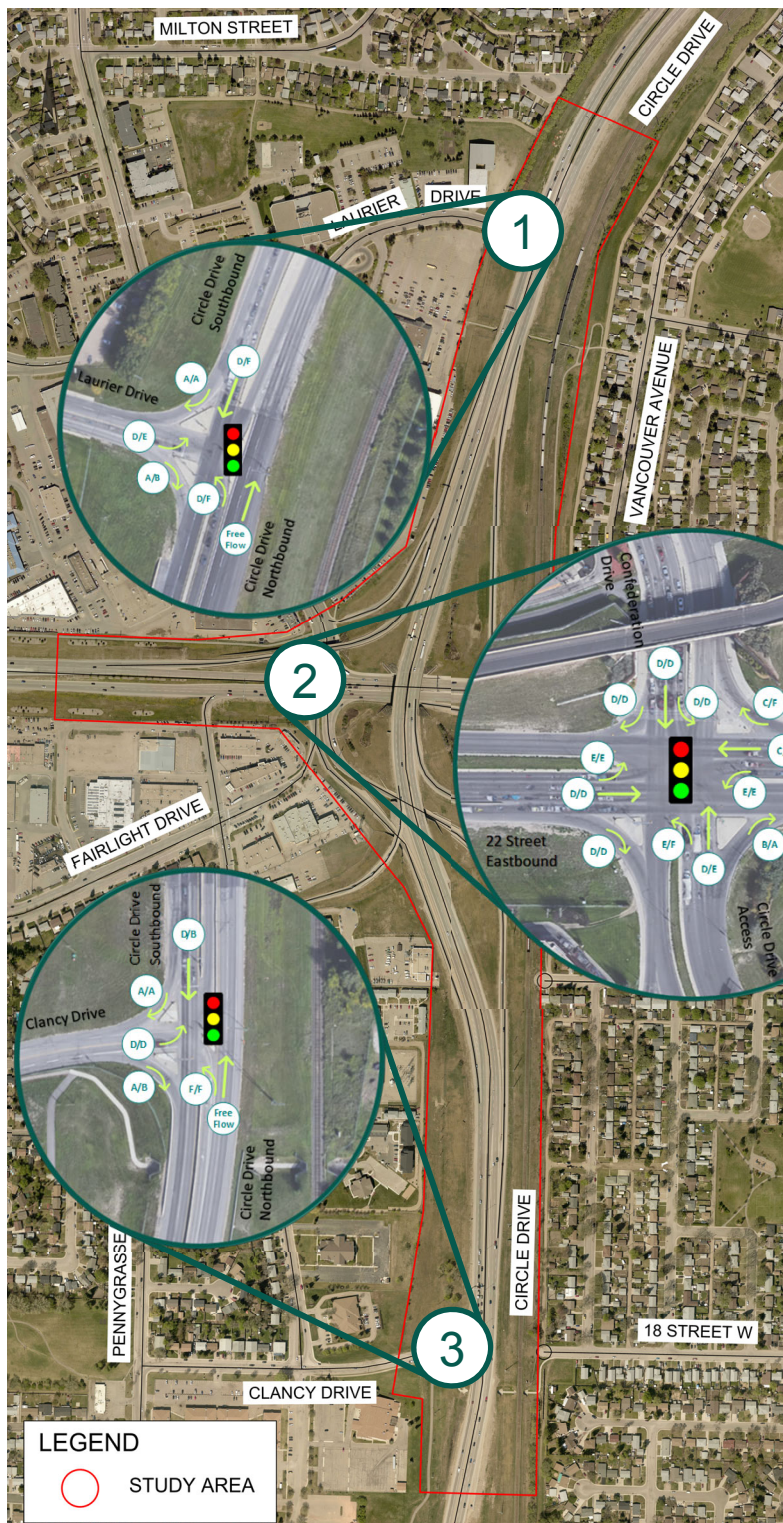
Feedback from the Neighbourhood Traffic Reviews



Circle Drive

Clancy Drive to Laurier Drive - Functional Plan

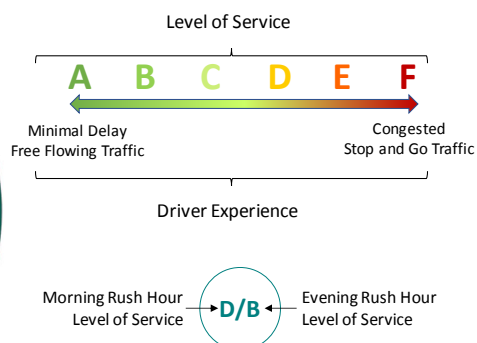
Traffic Conditions



Morning Peak Hour

More drivers travel northbound than southbound on Circle Drive

1. Southbound queue - drivers wait more than one traffic signal cycle
2. Eastbound queue - drivers wait more than one traffic signal cycle and have delays merging in from Fairmont Drive
3. Southbound and northbound queues cause drivers to wait more than one signal cycle



Afternoon Peak Hour

More drivers travel southbound than northbound on Circle Drive

1. Queues in all directions - drivers wait more than one signal cycle
2. Northbound and westbound queues - drivers wait more than one traffic signal cycle and force turning vehicles to wait in the through lanes
3. Northbound left turn queue fills the left turn lane and drivers must wait in the through lanes

Circle Drive

Clancy Drive to Laurier Drive - Functional Plan

Collision History

(2010-2017)

1. Pattern of southbound rear end collisions at Laurier Drive.

2. Intersection collision trends include:

- Right Angle Collisions for eastbound and southbound drivers
- Rear End Collisions in all directions
- Left Turn Collisions for eastbound drivers
- Side-Swipe Collisions in the eastbound, westbound and southbound directions

2a. Pattern of right-turn and sideswipe collisions for drivers weaving between Fairlight Drive and the Circle Drive on-ramp.

3. Pattern of northbound rear end collisions at Clancy Drive.

Directional differences in collision patterns on Circle Drive

- More collisions occurred northbound than southbound
- Most run-off road collisions occurred northbound
- Most rear end collisions occurred southbound

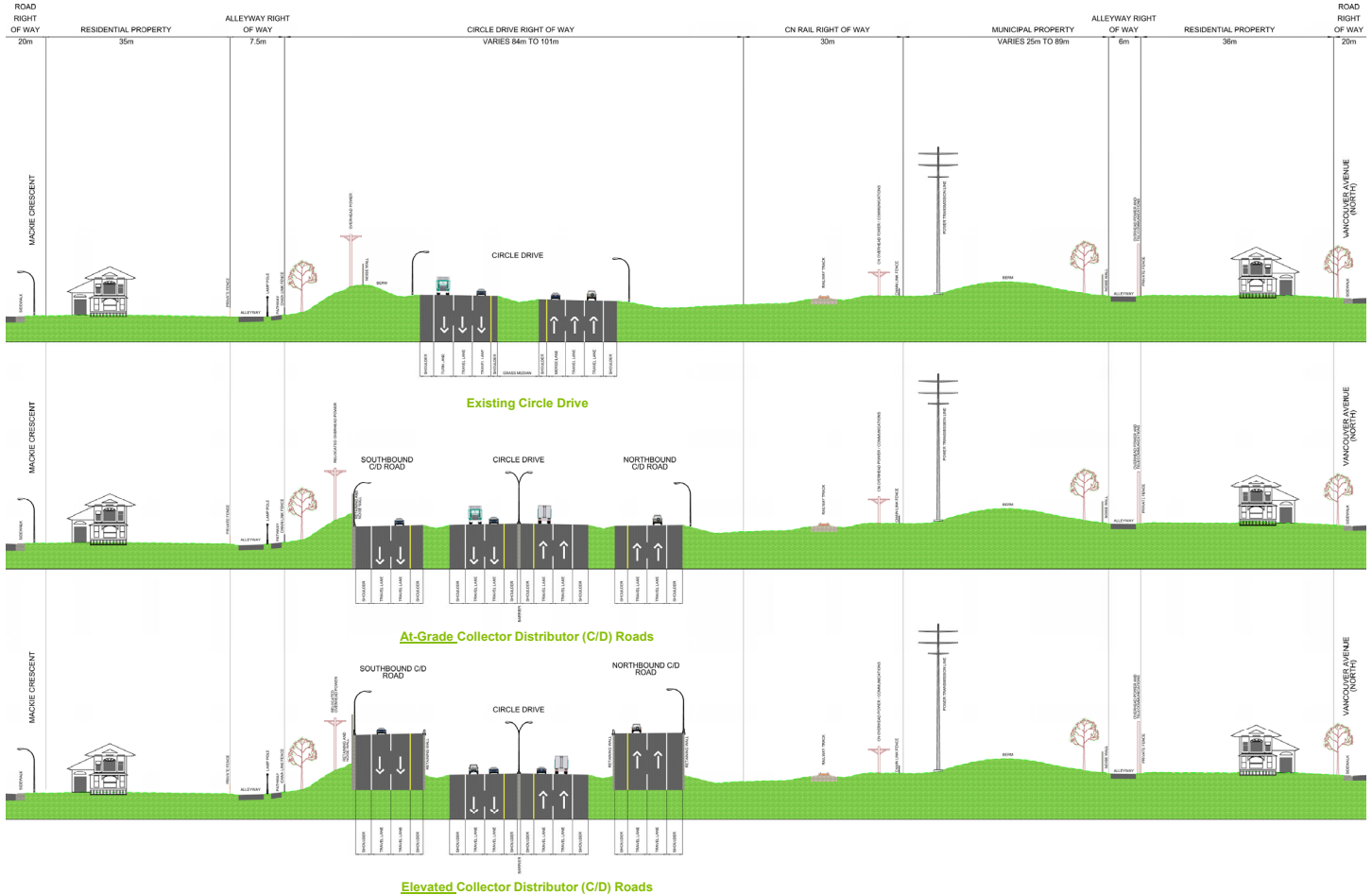


Sources:
2014 to 2017 Collisions on Circle Drive, Saskatchewan Government Insurance
Intersection In Service Report, Feb 2016, MMM Group
Roadside Safety Report, Sep 2016, MMM Group

Circle Drive

Clancy Drive to Laurier Drive - Functional Plan

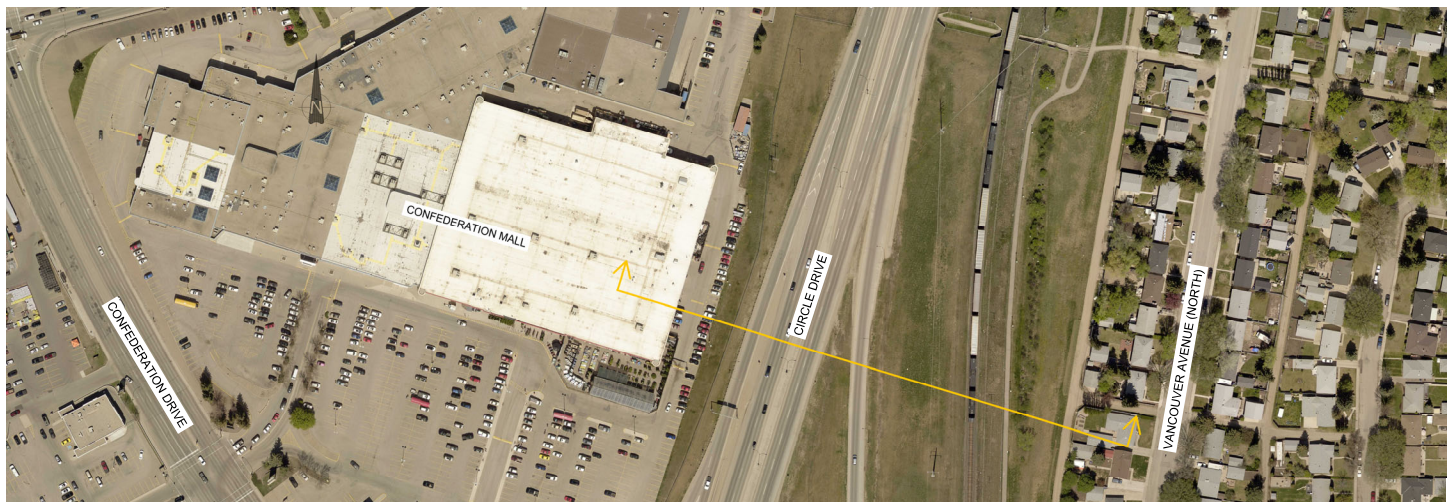
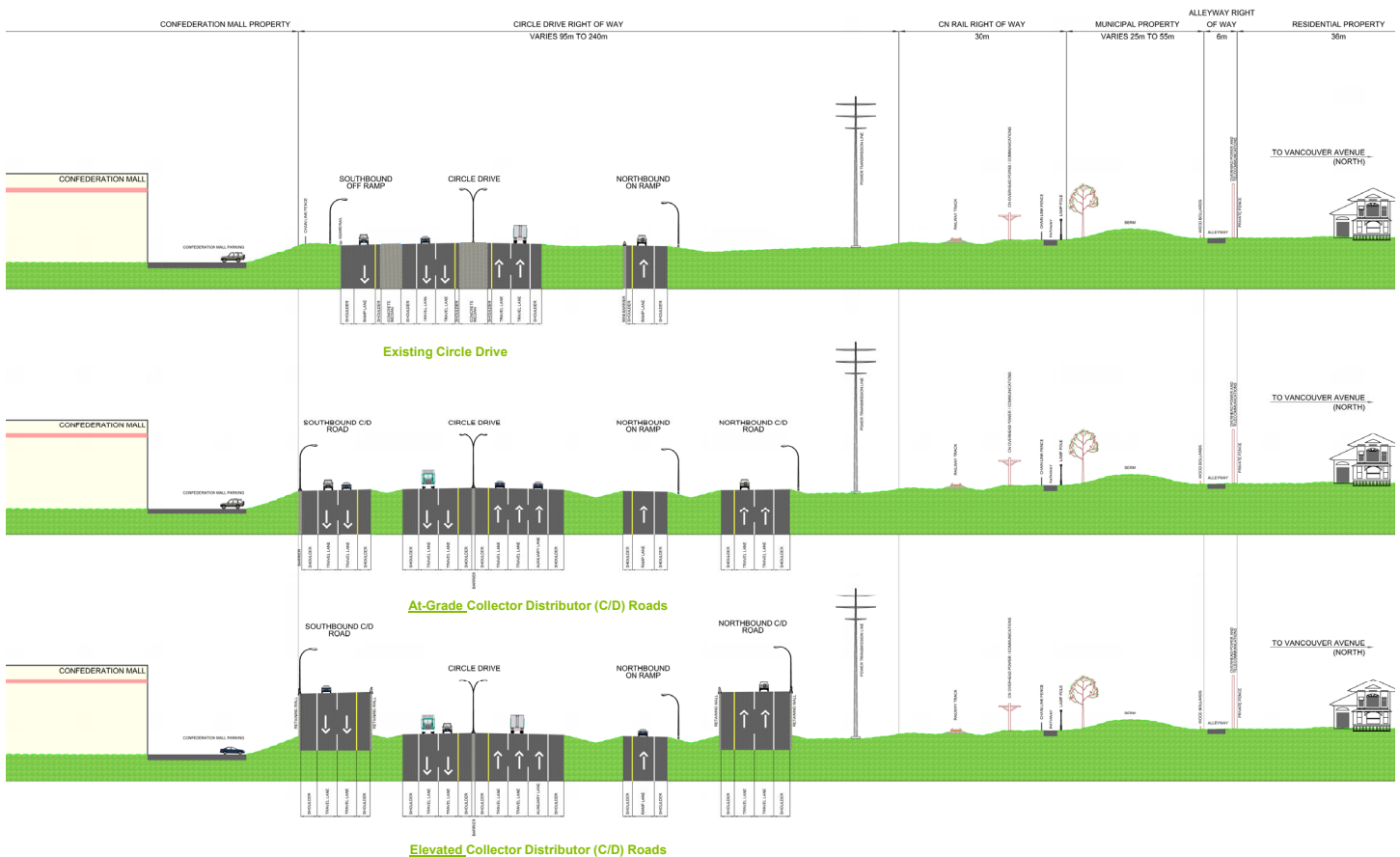
Some Ideas to Consider Through the Circle Drive Corridor (Section Looking North 260m North of Laurier Drive)



Circle Drive

Clancy Drive to Laurier Drive - Functional Plan

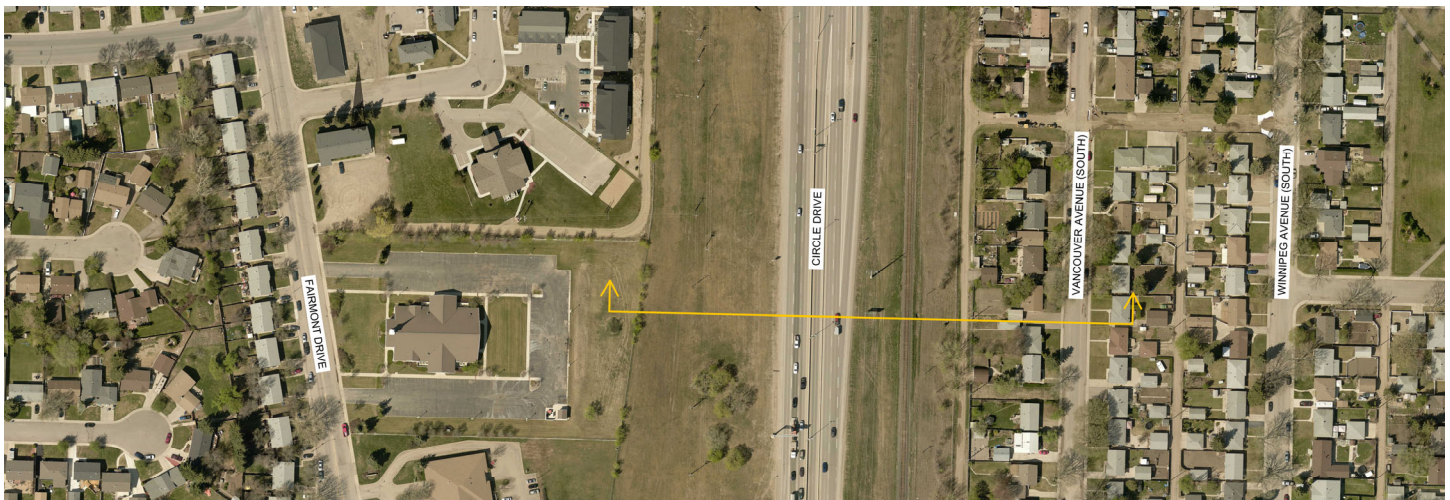
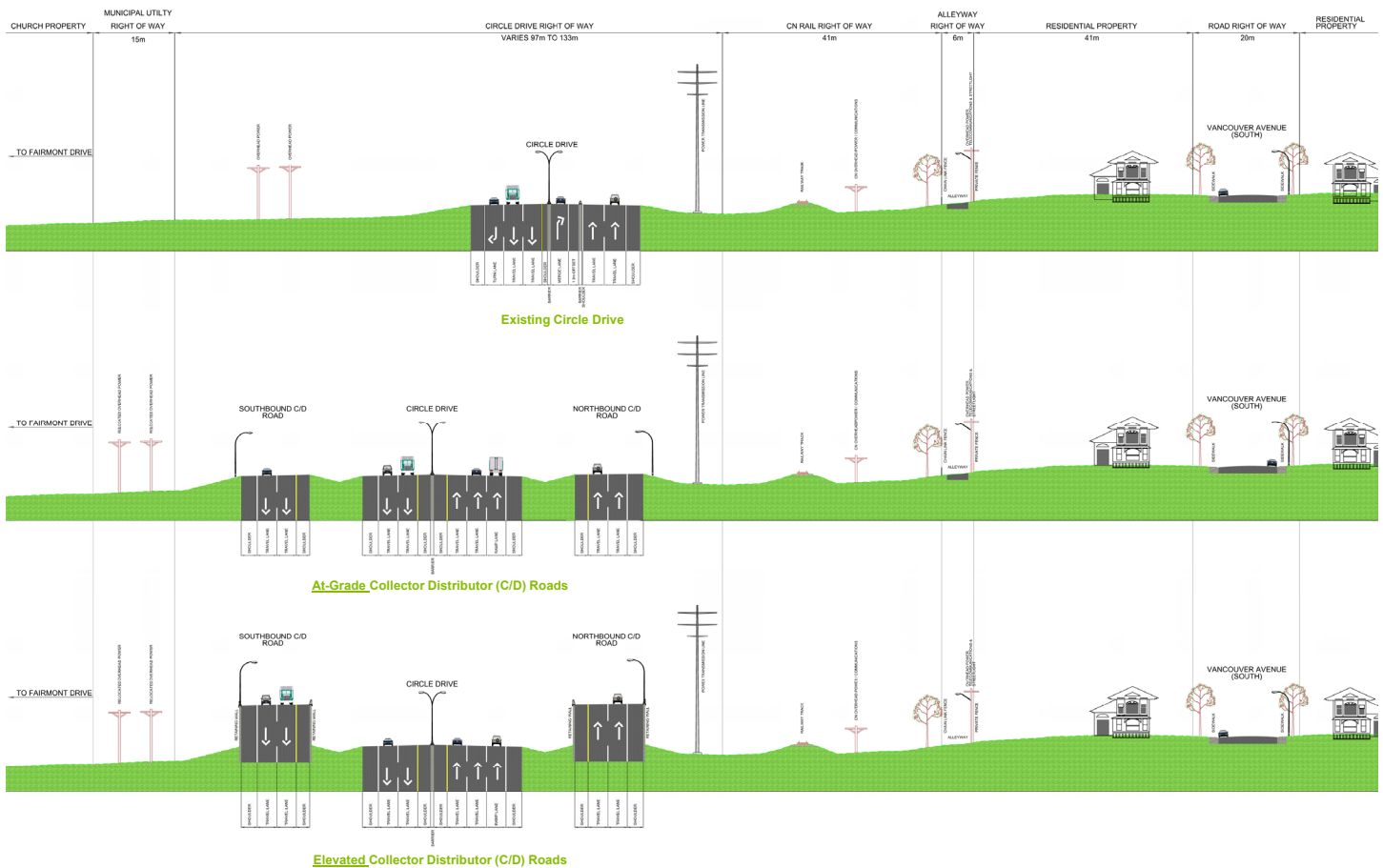
Some Ideas to Consider Through the Circle Drive Corridor (Section Looking North 300m North of 22nd Street)



Circle Drive

Clancy Drive to Laurier Drive - Functional Plan

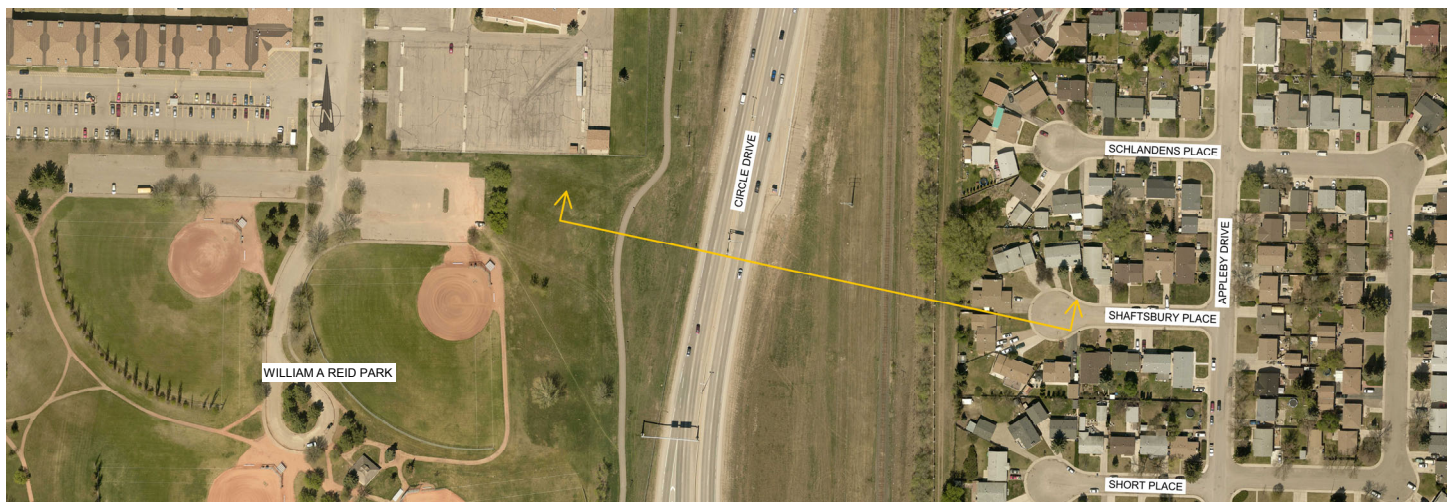
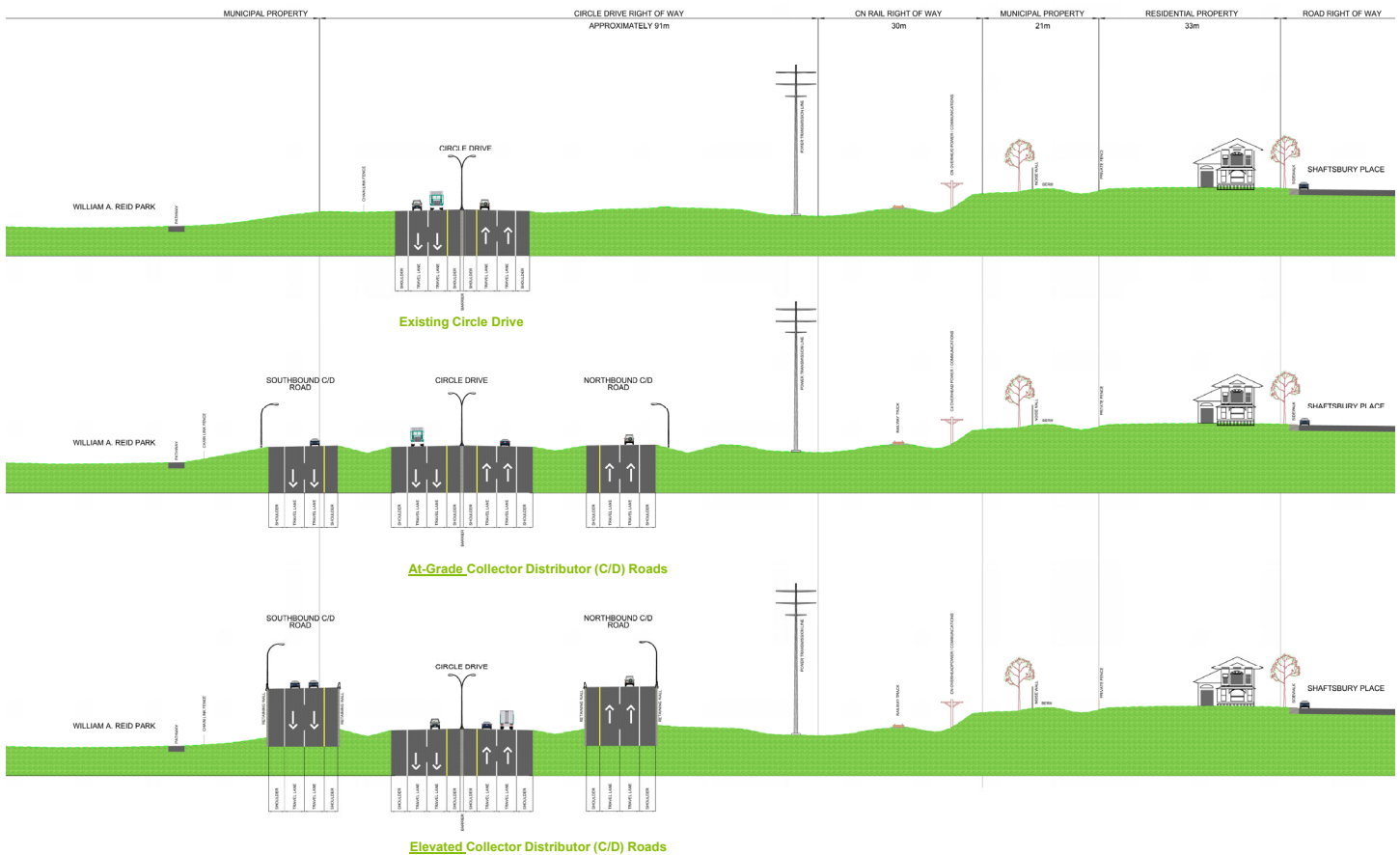
Some Ideas to Consider Through the Circle Drive Corridor (Section Looking North 130m North of Clancy Drive)



Circle Drive

Clancy Drive to Laurier Drive - Functional Plan

Some Ideas to Consider Through the Circle Drive Corridor (Section Looking North 230m South of Clancy Drive)



Circle Drive

Clancy Drive to Laurier Drive - Functional Plan

Study Area Map

Please write your comments on sticky notes and place on the large plans on the tables.

- What is most important?
- Concerns?
- Ideas?

City Map

Please mark with coloured dots where you:

- Live – use a red dot
- Work – use a green dot



Circle Drive

Clancy Drive to Laurier Drive - Functional Plan

Next Steps for You

- Please complete a comment sheet, either online or hardcopy, by July 5th
 - Send to justen.mcarthur@cima.ca
- Watch for information on the project website:
 - www.saskatoon.ca/engage

Next Steps for Study Team

- Post a summary of feedback to the project webpage.
- Consider your comments in the development and assessment of options.
- Meet with key stakeholders.
- Bring a preferred plan to Open House #2 in winter 2019.



Circle Drive

Clancy Drive to Laurier Drive

Functional Plan

**Thank you
for
attending!**

