



Meewasin Primary Trail – Chief Whitecap Park

(Primary Trail Development and Parking Lot Enhancements)

Project Overview

Chief Whitecap Park is south of the City of Saskatoon, along the east edge of the South Saskatchewan River. The project includes the development of 2.7 km of new primary Meewasin Trail / The Great Trail through the site, new site amenities, and expanded parking lots on the north and south end of the site.



MEEWASIN PRIMARY TRAIL - CHIEF WHITECAP PARK: Plan

LEGEND

- PROPOSED**
- B BENCH
 - T TRASH RECEPTACLES
 - GTS GREAT TRAIL SIGN
 - PTH PRIMARY TRAILHEAD
 - STH SECONDARY TRAILHEAD
 - I INTERPRETIVE SIGN
 - 3.0 m CRUSHER DUST TRAIL
 - PARKING LOT

- EXISTING**
- BARBWIRE FENCE
 - DOG PARK FENCE
 - CASUAL TRAIL
 - ENTRANCE GATE
 - CHIEF WHITECAP STATUE & INTERPRETIVE NODE
 - T TRASH RECEPTACLES
 - PARKING LOT

NOTES

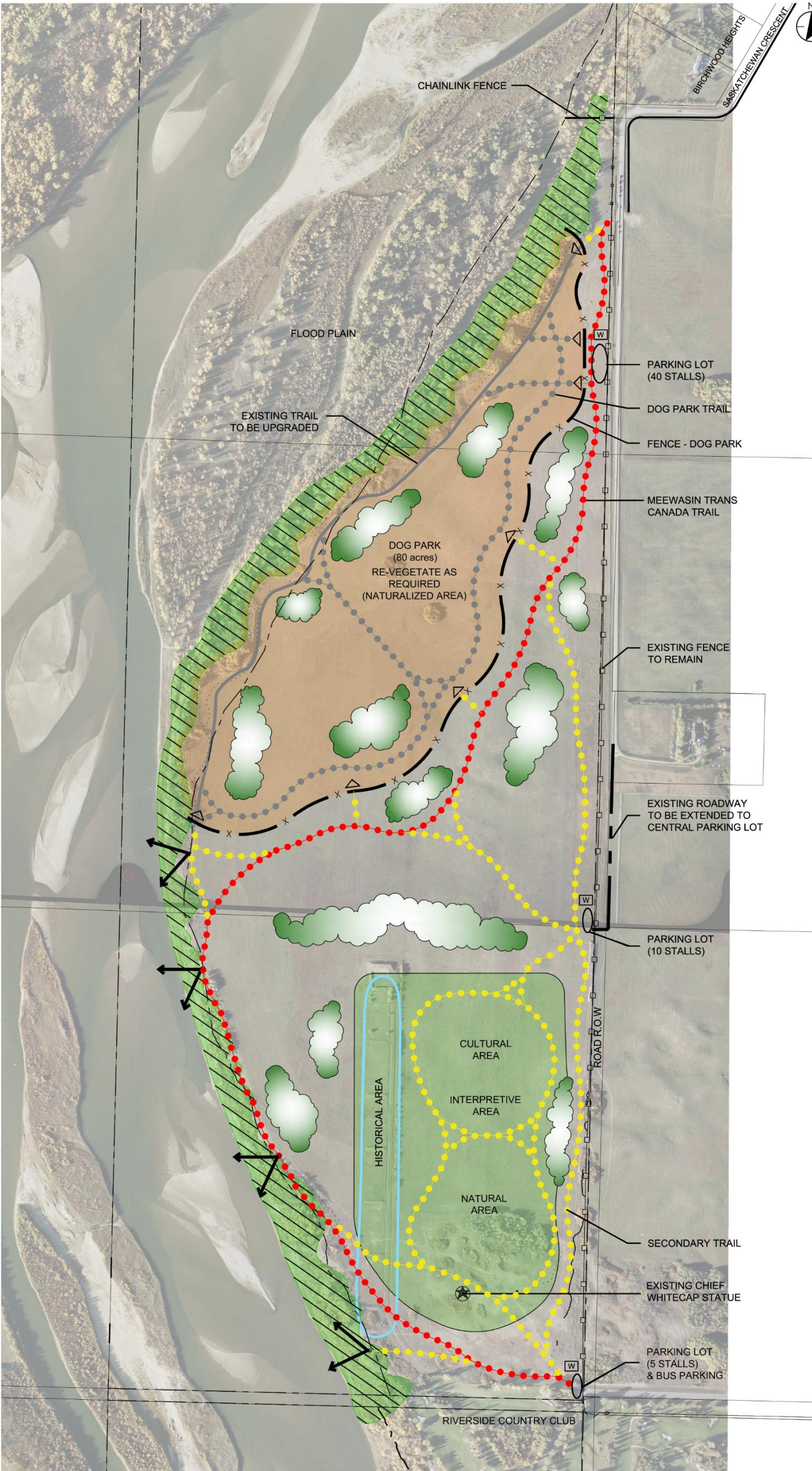
- PARKING LOT STALLS**
- NORTH PARKING LOT
Existing = 40 stalls
Proposed = 22 stalls
 - SOUTH PARKING LOT
Proposed = 24 stalls and bus parking
- TRAIL DISTANCE**
- Trail Distance = 2700 m



This project was funded in part by a grant from Trans Canada Trail



MEEWASIN PRIMARY TRAIL - CHIEF WHITECAP PARK: Master Plan



Stantec
100-75 24th Street East
Saskatoon Saskatchewan S7N 0K3
306.667.2400

Copyright Reserved
The Contractor shall verify and be responsible for all dimensions. DO NOT scale the drawing - any errors or omissions shall be reported to Stantec without delay.
The Copyrights to all designs and drawings are the property of Stantec. Reproduction or use for any purpose other than that authorized by Stantec is forbidden.

Consultants

LEGEND

- SECONDARY TRAIL
- DOG PARK TRAIL
- PRIMARY TRAIL - MEEVASIN TRANS CANADA TRAIL
- EXISTING MEEVASIN TRANS CANADA TRAIL
- EXISTING TRAIL TO BE UPGRADED
- WAYFINDING SIGNAGE
- FENCE GATE
- SEATING/LOOKOUT AREAS - TYPICAL
- NATURALIZED PLANTING
- RIPARIAN AREA - STEEP SLOPES
- DOG PARK
- INTERPRETIVE AREA - NO ANIMALS
- DOG PARK FENCE (PAGE WIRE)
- FENCE (6'-0" CHAINLINK)
- EXISTING FENCE TO REMAIN
- EXISTING CHIEF WHITECAP STATUE /INTERPRETIVE AREA
- PROPERTY LINE

FOR
DISCUSSION
PURPOSES
ONLY

CONCEPT ONLY DETAILS MAY VARY

Client/Project
MEEVASIN VALLEY AUTHORITY

CHIEF WHITECAP
MASTER PLAN REVISION
Saskatoon SK Canada

Title
PRELIMINARY CONCEPT PLAN
REVISED JANUARY 2016

Project No.
113154624
Scale
N.T.S.
Drawing No.
Sheet

Frequently Asked Questions

Why is this work being undertaken here? The work planned here for 2020 is part of ongoing site upgrades as envisioned in the approved Chief Whitecap Park Master Plan.

What is the goal of the project? The goal is to improve user experiences and access to the site, with new trail, seating nodes and increased parking.

How will the goal be accomplished? The plan involves the following key items:

- Development of 2.7 km of 3.0m wide crusher dust trail connecting from the existing Meewasin Trail terminus at the north end of the site, to the south end of the park;
- Install benches and trash receptacles along the trail, and at key river viewpoint locations;
- Install standard Meewasin trailhead signage at key locations to provide way-finding for site users;
- Topsoil and seed disturbed areas;
- Expand the north parking lot with 22 additional stalls, and
- Formalize the south parking lot with 24 additional stalls.

What will the completed trail look like? The proposed trail will be:

- Built to current accessibility standards and City of Saskatoon construction standards,
- 3.0m wide with a crusher dust surface,
- Incorporate amenities such as benches, signage and trash receptacles.

What will be the impacts on parking? Overall you will see an increased availability of parking with an estimated 46 new stalls.

When will this work be done? The project is scheduled to proceed in June 2020, and be complete by the fall.

Will any part of the site be closed? Closures are not anticipated; however, detours will be necessary to get around construction zones. The fenced, off-lease area and river access will remain open. Some reduction in parking availability is expected when the parking lot work is undertaken. Site users are asked to respect the construction activity and use designated detours outside of the work zone. Please also be aware of construction traffic in the area.

Are there other plans for trail enhancements? There are a number of projects currently being planned, including trail enhancements through the downtown area, development of gaps in the network such as in the Holiday Park area (with the closure of Spadina Crescent), and in the River Heights neighbourhood. New trail is also being planned for the northeast sector, from the Circle Drive North Bridge to the Chief Mistawasis Bridge.

How is this project being funded? The project is funded by Trans Canada Trail with the City of Saskatoon contributing funds for the parking lot. Meewasin is a charitable organization that relies on donations to continue undertaking trail enhancement projects, visit www.meewasin.com/donate to learn more.

About the Meewasin Valley Authority

The Meewasin Valley Authority exists to ensure a healthy and vibrant river valley, with a balance between human use and conservation by:

- *Providing leadership in the management of its resources;*
- *Promoting understanding, conservation and beneficial use of the Valley; and*
- *Undertaking programs and projects in river valley development and conservation,*

for the benefit of present and future generations.

There are 67 square kilometers of land and over 90km of established trail, which has seen up to 1.65 million trail visits per year, in the Meewasin Valley. The area also features sites that help people to connect to nature through experiences such as Beaver Creek Conservation Area, the Meewasin Northeast Swale, Saskatoon Natural Grasslands, the River Landing Spray Area, and the Cameco Meewasin Skating Rink @Nutrien Plaza. Meewasin is a non-profit organization that relies on donations and volunteers for sustainability. To get involved or learn more visit www.meewasin.com