

Parkridge Park Upgrade

Park Upgrade Program

This proposed redevelopment is part of the Parks Department’s “Park Upgrade Program” that is an opportunity to address deficiencies in parks and to bring parks up to current development standards.

- Existing features:
- Play structure (by each school)
 - Spray pool (adjacent to St. Marguerite)
 - Sports fields
 - 1 Allocated green space (64m x 40m)
 - 1 Multi purpose field
 - 1 Neighbourhood Softball Field
 - 3 Small Ball Fields
 - Asphalt pathways (1.8m wide)
 - Partial pathway lighting
 - Plant material, including two aspen bluffs

Site Analysis

Pathways
The existing pathways provide pedestrian access to the parks’ features from the surrounding neighbourhood, both at street frontages and neighbourhood linkages; and, they provide connection to both elementary schools. The pathways are 1.8m wide and in poor condition.

Pathway lighting
This park does have pathway lighting, but the layout is not consistent and it does not meet current pathway lighting standards.

Play equipment
Equipment adjacent to St. Marguerite School is in good condition (upgraded in 2019). Equipment adjacent to James L. Alexander School is scheduled for replacement in the upgrade.

Site furniture
Site furniture is in need of replacement.

Plant material (large caliper deciduous and coniferous trees)
Most of the plant material is mature and healthy and is laid out so as not to impede pedestrian sight lines as they travel along the pathways.

Plant material (aspen bluffs)
There are two prominent aspen bluffs in Parkridge Park, both are in natural low areas of the park, indicative of aspen habitat. The west aspen bluff has a pathway cutting through it.



Parkridge Park Upgrade

Existing Sports Fields

- Parkridge Park includes six allocated sports:
- 1 Allocated green space (64m x 40m)
 - 1 Multi purpose field
 - 1 Neighbourhood Softball Field
 - 3 Small Ball Fields

These fields are of varying quality, with two primary concerns; their layout in relation to other components of the park, and grading. Grading is of particular concern because, if it is not addressed, adding irrigation alone would likely not improve the quality of the turf.

Sports Fields: Analysis

Field 1: Allocated Green Space

Field size: 64m x 40m (standard). The field works well within the site (i.e. there are no conflicts with other components), but it is flat.

Field 2: Small Ball Field

Infield: 15m (non-standard).The layout of the field works well within the site (i.e. there are no conflicts with other components), but it is flat.

Field 3: Small Ball Field

Infield: 12.5m (non-standard).The outfield encroaches on the aspen bluff. The field drains towards the aspen bluff, but only poorly.

Field 4: Large Ball Field

Infield: 16.2m (non-standard).The field does drain (poorly), and it drains towards the infield (undesirable).

Field 5: Small Ball Field

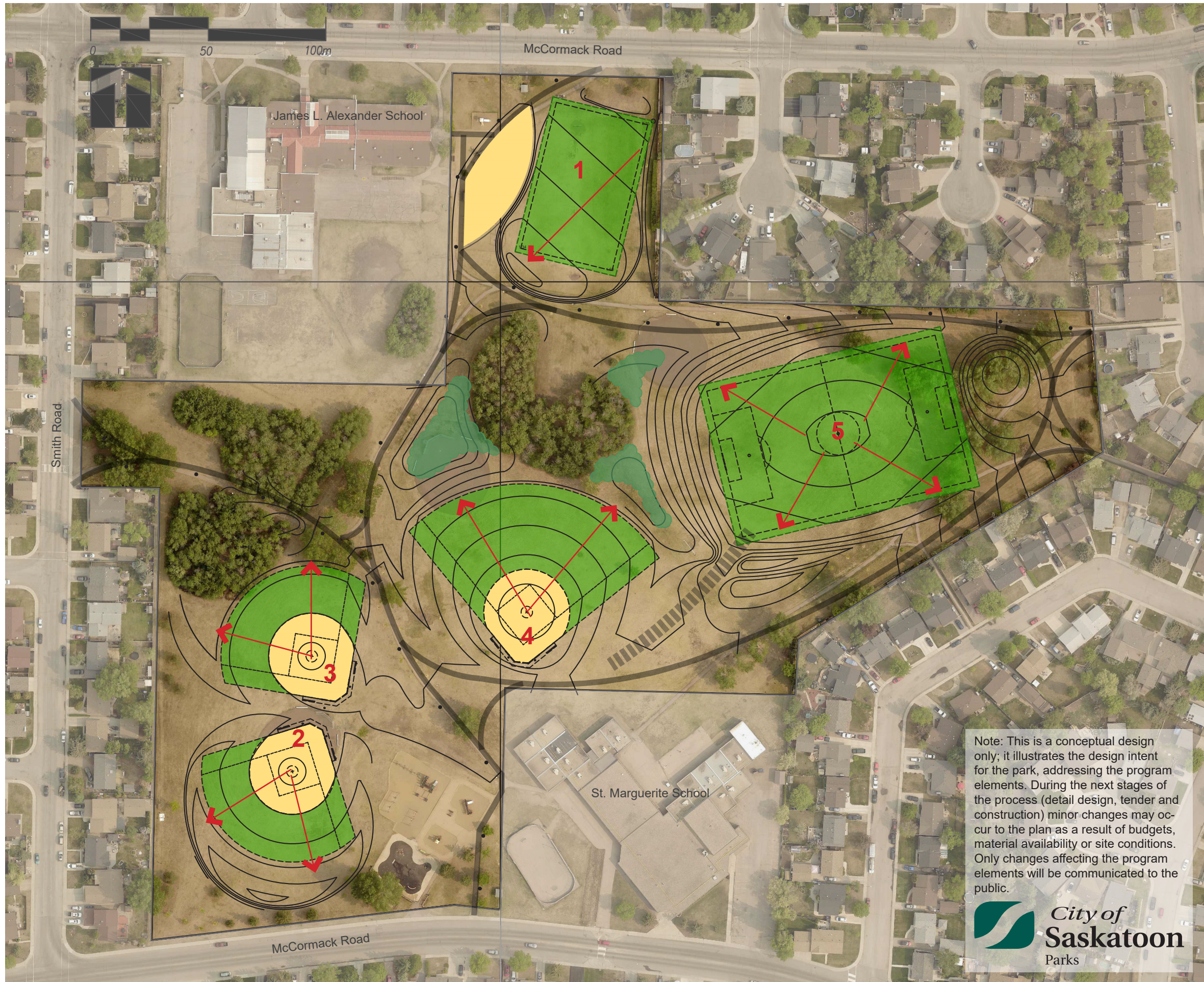
Infield: 13.6m (non-standard).The field drains, but only poorly. While the size of the field, as allocated, doesn't overlap with the adjacent soccer pitch, it makes for an awkward layout, with a potential for conflict between players.

Field 6: Soccer Pitch

Field size: 100m x 64m (standard).The proximity to Field 5 makes for an awkward layout, should both fields be in use at the same time. There is drainage across this field, but it is less than desirable.

Note: This is a conceptual design only; it illustrates the design intent for the park, addressing the program elements. During the next stages of the process (detail design, tender and construction) minor changes may occur to the plan as a result of budgets, material availability or site conditions. Only changes affecting the program elements will be communicated to the public.





Parkridge Park Upgrade

Sports Fields: Proposed Upgrade

This proposed park upgrade includes revision to the sports fields, including the number of fields, their size and orientation. This revision was done in consultation with Recreation and Community Development on January 12, 2022. At this meeting, the existing conditions of the park (as noted on the Site Analysis), were reviewed, noting that it would be challenging to bring these fields up to current Parks' standards, while maintaining same number of fields. A number of options were presented and discussed (not included in this presentation) and the layout, as presented, was agreed upon.

Field 1: Allocated Green Space

Field size: 64m x 40m (standard). This field requires reorientation in order to integrate with the adjacent play area revisions; to preserve exiting plant material; and, improve drainage.

Field 2: Small Ball Field

Infield: 18.3m (standard). This field requires a minor change to its orientation in order to integrate with adjacent park components, and to improve drainage.

Field 3: Small Ball Field

Infield: 18.3m (standard). This field requires a minor change to its orientation in order to integrate with adjacent park components (aspen bluff), and to improve drainage.

Field 4: Neighbourhood Softball Field

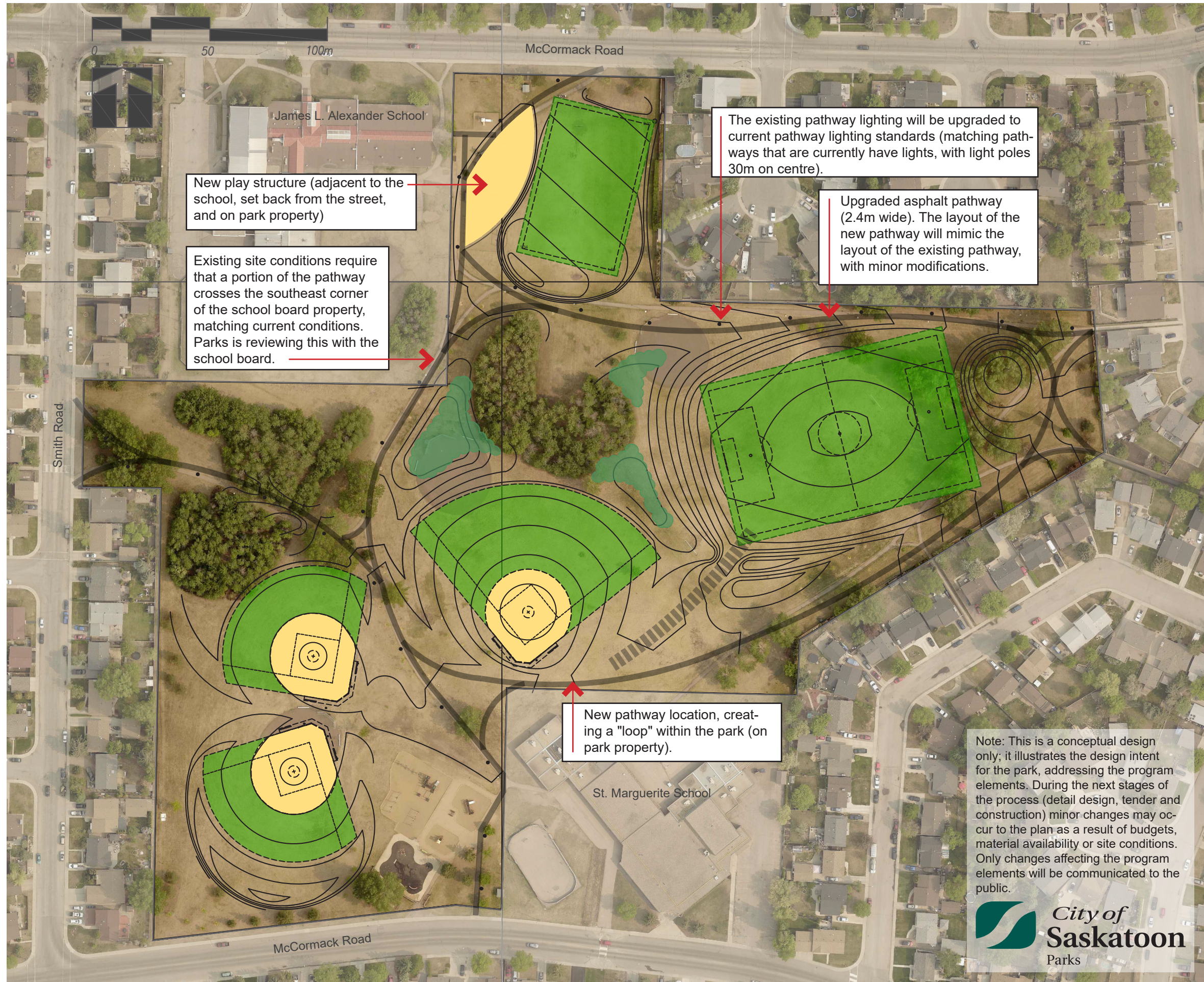
Infield: 18.3m (standard). This field requires reorientation so that the grading requirements of the field align with the natural characteristics of the site (the infield aligns with the natural high point, and the outfield drains towards the aspen bluff). Site conditions allow the outfield dimension to meet Neighbourhood Softball Filed dimensions (68.6m).

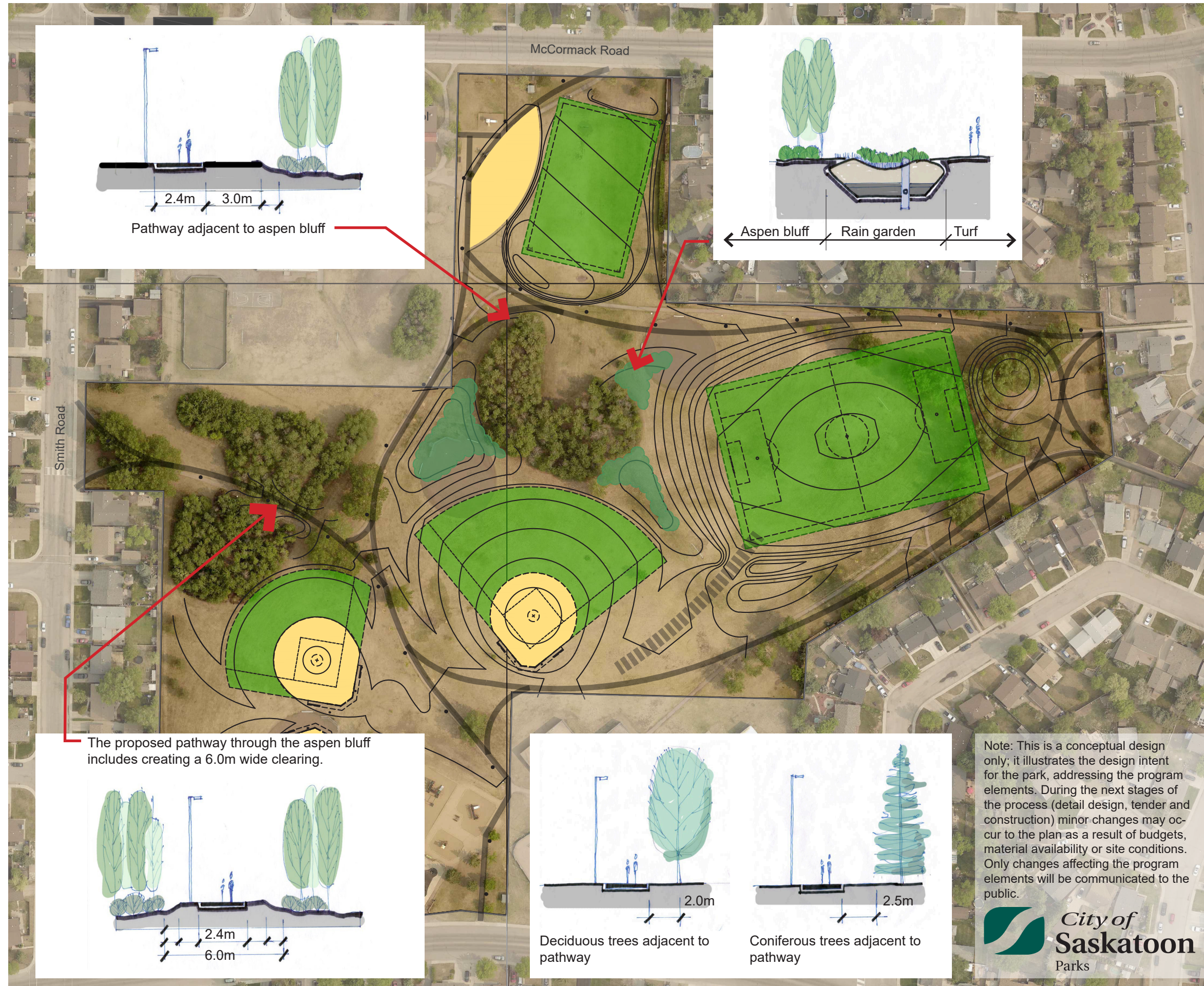
Field 5: Multi Purpose Field

Field size: 100m x 64m (standard). The field is graded to meet Parks standards.

Note: This is a conceptual design only; it illustrates the design intent for the park, addressing the program elements. During the next stages of the process (detail design, tender and construction) minor changes may occur to the plan as a result of budgets, material availability or site conditions. Only changes affecting the program elements will be communicated to the public.







Parkridge Park Upgrade

Park Upgrade Program

This proposed redevelopment is part of the Parks Department's "Park Upgrade Program" that is an opportunity to address deficiencies in parks and to bring parks up to current development standards.

As part of this upgrade project, Parks is working with the Saskatoon Public School Board, Greater Saskatoon Catholic Schools and the City of Saskatoon's Recreation and Community Development to coordinate construction and public communication.

Site Analysis

Pathways

Upgrade the remaining pathways to the current Parks' standard.

Pathway lighting

Add pathway lights to the park