

HYDE PARK PHASE II

Project

This year the City will begin work on Phase II of Hyde Park. Plans for the park include:

- Placing a formal **crusher dust pathway** in the Southwest corner of the park to connect with existing pathways.
- Placing formal **crusher dust pathways** at the North and South gates of the Dog Park to connect with existing pathways in Hyde Park.
- Adding significantly more **rip-rap** (small-to-medium rocks) to the Dog Park area that experiences flooding during spring melt and rain events.
- Installing **outdoor sculptures** within the park. Three different potential locations are being proposed.
- Developing **interpretive signage and education areas** to explain the significance of the naturalized areas within the park.
- Enhancing **naturalized plantings** throughout the park.



HYDE PARK PHASE II

Timelines

STAGE 1

Landscape Contract

(August-September 2019)

- Crusher dust pathways
- Education areas
- Rip-rap in dog park
- Site furniture
- Concrete foundations for sculptures



STAGE 2

Outdoor Sculptures

(2019/2020)

- Install 5 outdoor sculptures in Hyde Park (from former Mendel Art Gallery site)



STAGE 3

Interpretive Signage

(2019/2020)

- Design and install interpretive signage in education areas

STAGE 4

Naturalized Planting

(Establishment over a few years)

- Enhance naturalized plantings throughout the park

HYDE PARK PHASE II

Dog Park Upgrades



HYDE PARK PHASE II

Outdoor Sculptures

The City and Remai Modern in collaboration are proposing the temporary exhibition of five outdoor sculptures (formerly located outside of the Mendel Art Gallery) in Hyde Park. Exhibiting the sculptures in Hyde Park is in keeping with the City's Culture Plan strategy to enhance creative placemaking in Saskatoon neighbourhoods.

Untitled, 1968 (Steel)

James Korpan (1944, Canada)

James Korpan was born in 1944 in Saskatoon. He works primarily in cast bronze and welded steel. *Untitled* was produced during the PSA Sculpture Symposium, April 15-20, 1968, from sections of carbonized grader blades welded together. As he often utilizes found metal, using the existing shapes and rust patina.

Korpan's work has been exhibited extensively in Saskatoon and elsewhere in Canada and is part of the collections of Gatineau Laurentian Park, James Art Studio (Saskatoon), Mendel Art Gallery (Saskatoon), Medicine Hat Museum and Art Gallery, Municipal District of Navidad, Chile, Tourism Saskatoon, and the Saskatoon Board of Education. Korpan has been involved with the arts community through the Humanum Art Group, the Prairie Sculptors' Association, CARFAC, and the Saskatchewan Arts Board, of which he was the director from 2003 to 2005. He is an actively involved with the Prairie Sculptors Association, and is part of the collectives Reartcycle and 330 Design Group in Saskatoon.



HYDE PARK PHASE II

Outdoor Sculptures

Happy Outlook, 1992 (Steel)

Heart of Balzac, 1993 (Steel)

Untitled, 1995 (Steel)

Peter Hide (1944, England)

Peter Hide was born in Surrey, UK. He is considered one of the most impressive practitioners of welded-steel sculpture. Working in the assembled sculptural tradition of Pablo Picasso, David Smith and Anthony Caro, Hide has produced artworks of remarkable individuality and innovation. As a student of Caro's his influence is evident, however Hide's sculptures are intentionally dense, monumental and heavy in aesthetic and reality. He has always worked in steel, and his large abstract pieces are confident upright expressions of mass and weight rendered in rusted heavy industrial scrap steel.

Hide is part of many international collections, including the Tate, London, has exhibited internationally and participated in the early Triangle Artists' Workshops.

1 Untitled

2 Happy Outlook

3 Heart of Balzac



HYDE PARK PHASE II

Outdoor Sculptures

Gentle Rain, 1995 (Steel)

Douglas Bentham (1947, Canada)

Douglas Bentham has maintained an international reputation as a major practitioner of abstract, constructivist sculpture for over forty years. He produces abstract sculpture in various mediums including steel, stainless steel, bronze, brass and wood. Bentham creates his unique objects in scales ranging from monumental pieces to works that can be held in the hand. Bentham was influenced by American sculptor David Smith and English sculptor Anthony Caro and sought to create innovative work that reflected his environment.

He has produced several commissions and presented in numerous exhibitions across Canada, where his works can be found in many private and corporate collections. Bentham has been a major contributor to the artistic community, participating in and co-leading Emma Lake Artists' Workshops and co-founding the Canadian Artists' Representation (now known as CARFAC). He was elected a member of the Royal Canadian Academy of Arts in 1976. He received the Lynch-Staunton Award from the Canada Council in 1981. Bentham lives on an acreage near Dundurn, Saskatchewan.



HYDE PARK PHASE II

Sculpture Location Options

The proposed outdoor sculpture location options have been selected based on the following criteria:

- *four season*
- *ecological*
- *accessible*
- *makes use of existing park lighting*
- *maintenance*
- *aesthetic*
- *complementary to existing vegetation, lighting & bridge*
- *respectful*



HYDE PARK PHASE II

Sculpture Location Options

Option 1



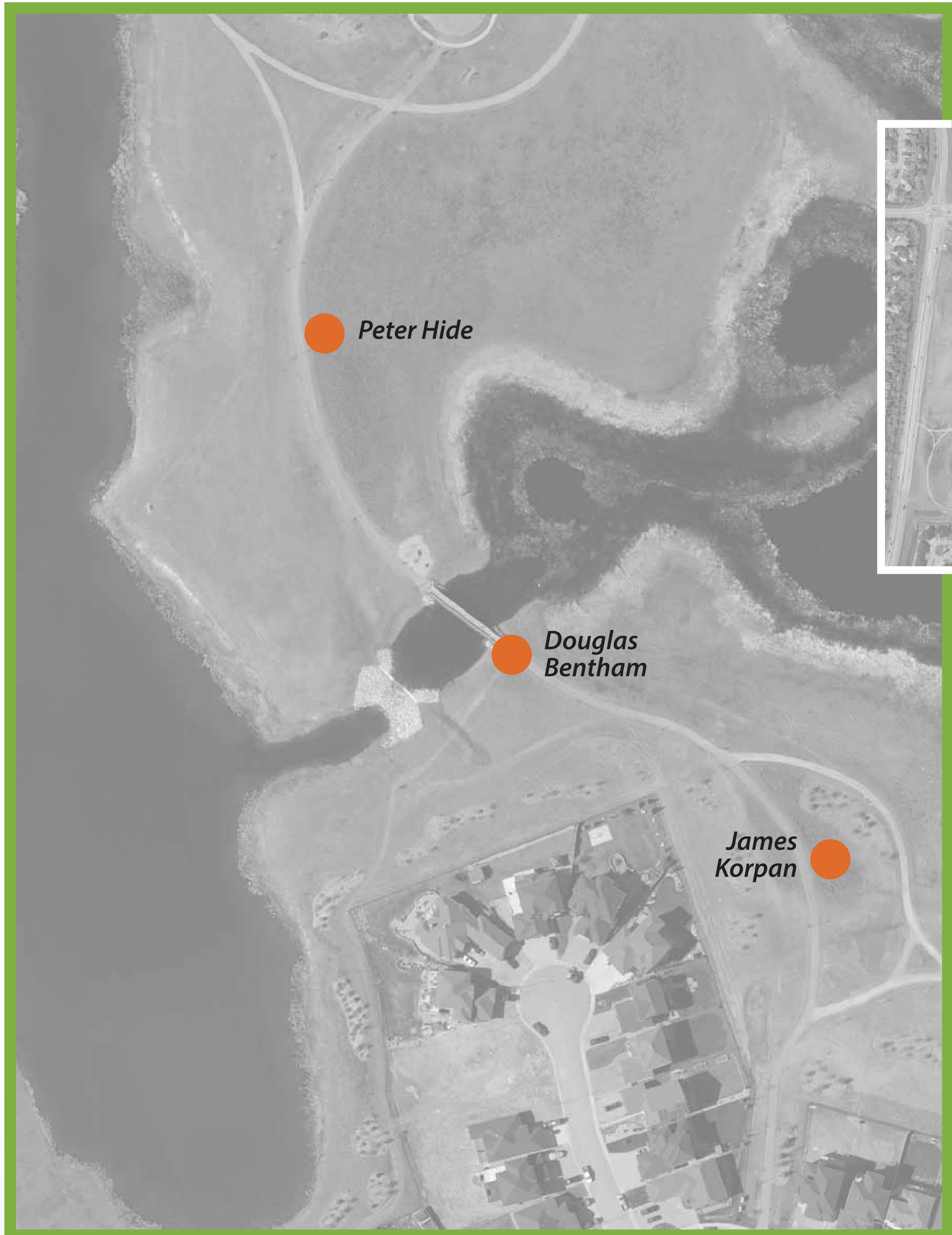
Place votes here



Option 2



Place votes here



HYDE PARK PHASE II

Sculpture Location Options

Option 3



Place votes here

Option 4



Place votes here



HYDE PARK PHASE II

Sculpture Location Options

Option 5



Place votes here



Option 6



Place votes here



HYDE PARK PHASE II

Interpretive Signage

Developed in collaboration with Ducks Unlimited, Hyde Park features naturalized areas with native prairie landscapes and wetlands that attract a variety of nesting bird species and other wildlife. Phase II will include the installation of interpretive signage to explain the significance of the naturalized areas within the park.

