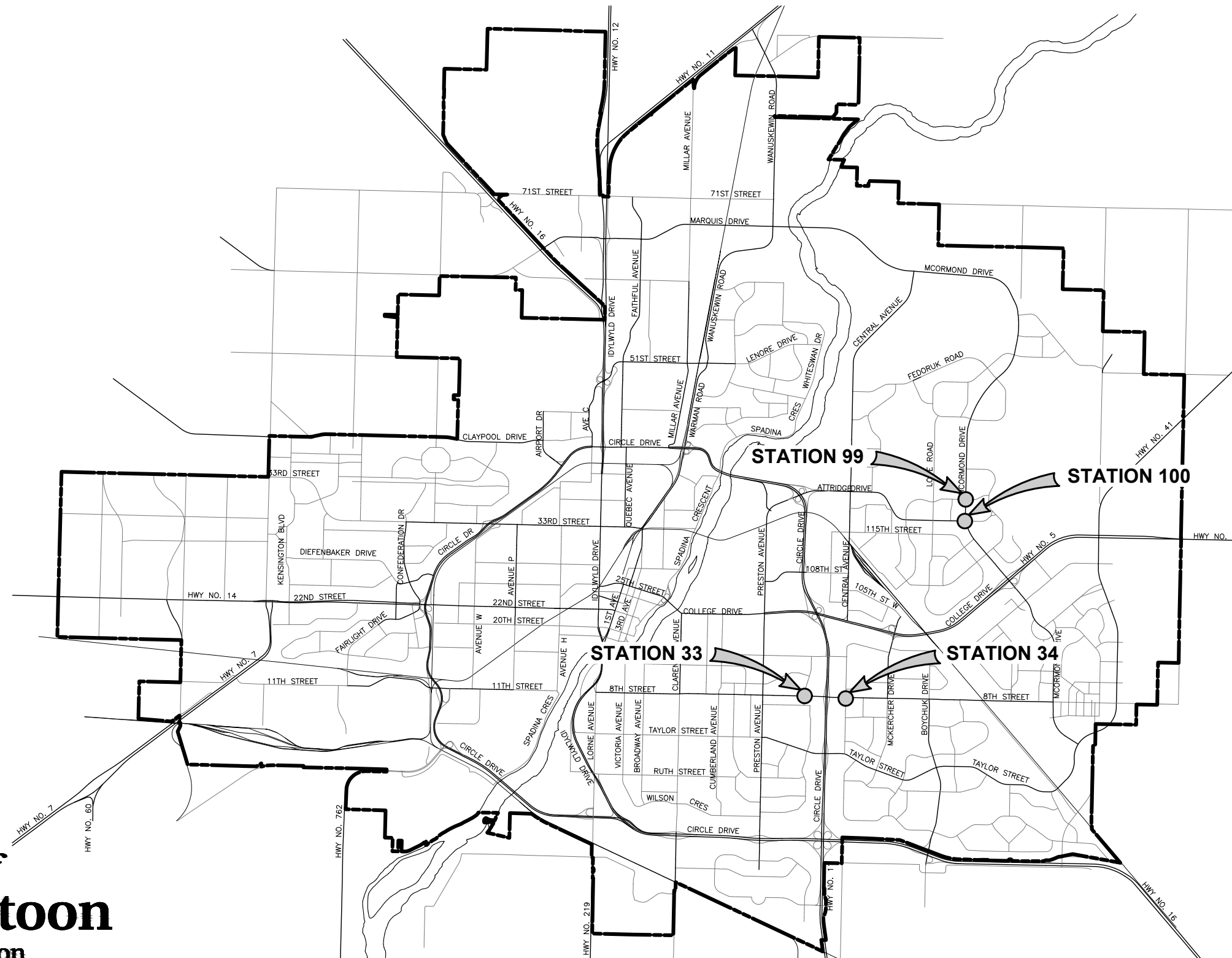


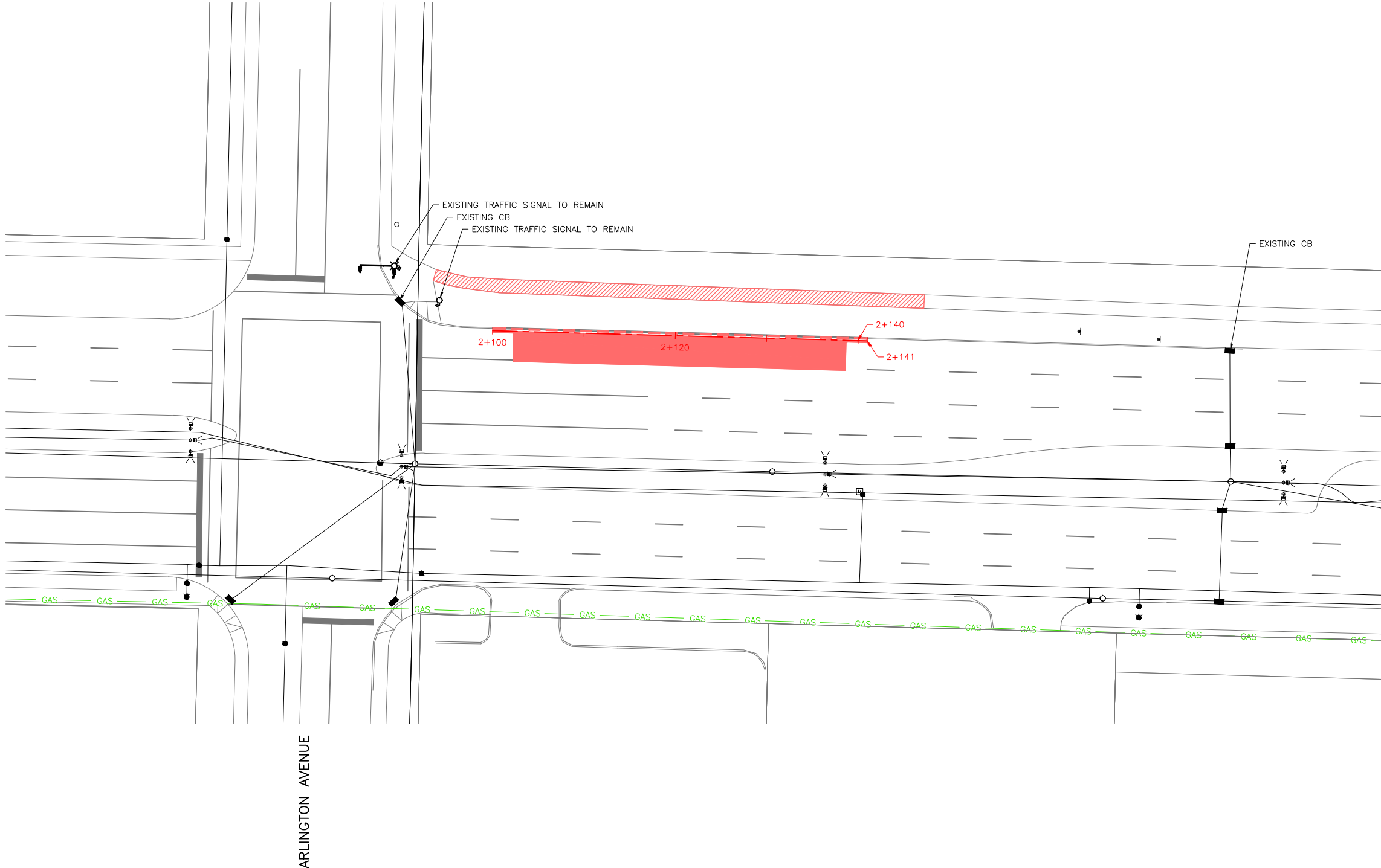
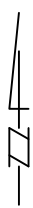
# BUS RAPID TRANSIT SYSTEM STATION DESIGNS CONTRACT NO. 2



11
10
9
8
7
6
5
4
3
2
1

LEGEND:

- ASPHALT REMOVAL
- CONCRETE REMOVAL
- REMOVE CURB



8TH STREET

ARLINGTON AVENUE

Association of Professional Engineers & Geoscientists  
of Saskatchewan

CERTIFICATE OF AUTHORIZATION

CIMA CANADA  
Number C1396

Permission to Consult held by:

Discipline: Sk. Reg. No. Signature

TRANSPORTATION 13420



11			
10			
9			
8			
7			
6			
5			
4	ISSUED FOR TENDER	2024-07-22	CIMA+
3	ISSUED FOR REVIEW	2024-07-05	CIMA+
2	ISSUED FOR REVIEW	2024-06-14	CIMA+
1	ISSUED FOR REVIEW	2024-05-29	CIMA+
	PLAN DESCRIPTION/REVISION	DATE	BY

SEAL

CHECKED BY:	CHECKED BY:
DATE	DATE
DRAWN BY:	DATE



BUS RAPID TRANSIT SYSTEM

STATION 33

RED LINE

8TH STREET & ARLINGTON AVENUE

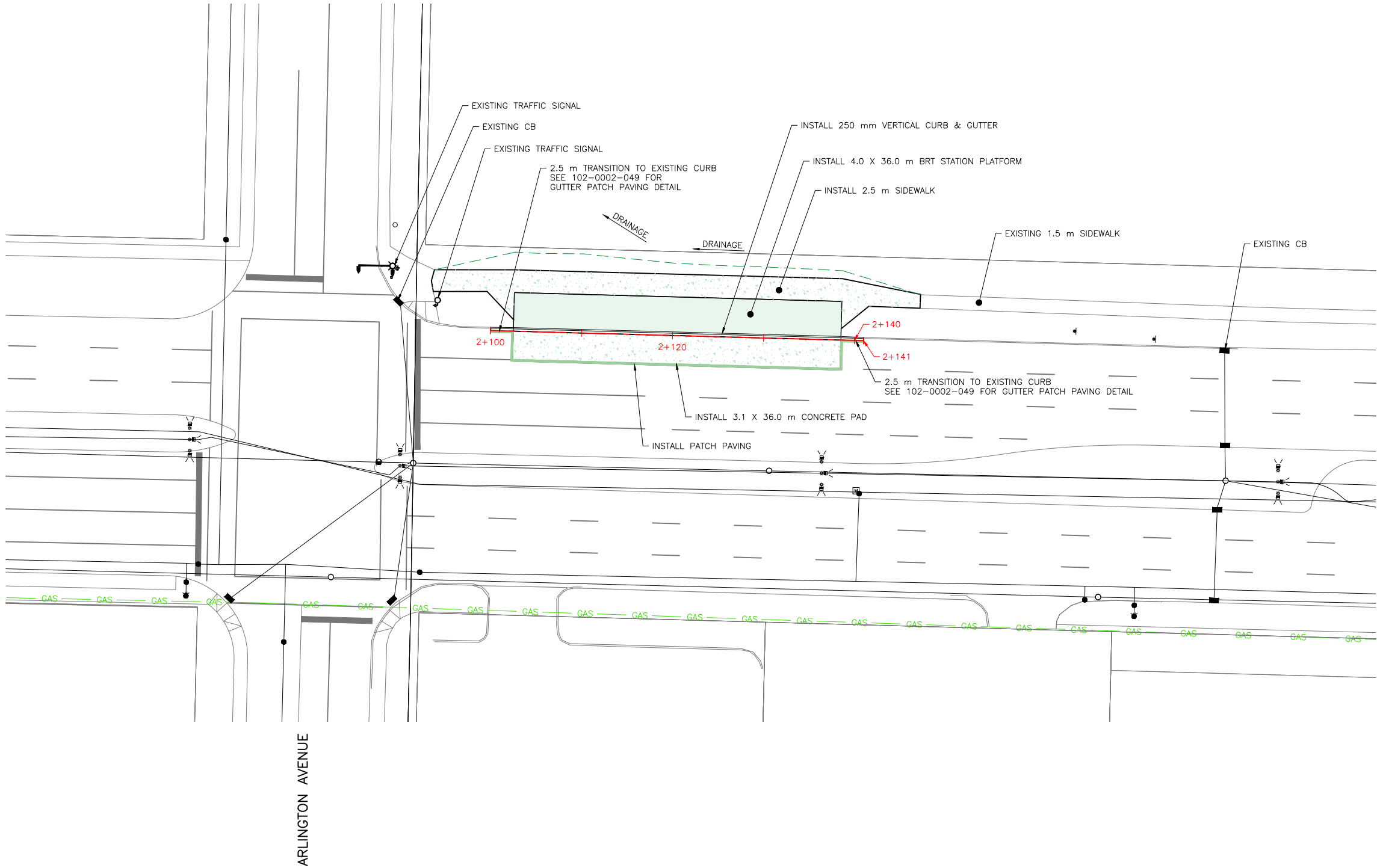
REMOVALS PLAN

ENGINEER	
SCALES : HOR. 1:500 VERT.	DATE
SHEET NO. -	PLAN NO. Z0012044-TR-2100

LEGEND:

- ASPHALT INSTALLATION
- CONCRETE INSTALLATION
- BRT STATION PLATFORM INSTALLATION
- DAYLIGHT - CUT
- DAYLIGHT - FILL

- NOTES:
1. CONTRACTOR TO MATCH EXISTING INFRASTRUCTURE AT TIE IN POINTS.
2. SIDEWALK LONGITUDINAL GRADE TO MATCH EXISTING, MAX SLOPE 3.0%



11			
10			
9			
8			
7			
6			
5			
4	ISSUED FOR TENDER	2024-07-22	CIMA+
3	ISSUED FOR REVIEW	2024-07-05	CIMA+
2	ISSUED FOR REVIEW	2024-06-14	CIMA+
1	ISSUED FOR REVIEW	2024-05-24	CIMA+
	PLAN DESCRIPTION/REVISION	DATE	BY

CHECKED BY:	CHECKED BY:
DATE	DATE
DRAWN BY:	DATE

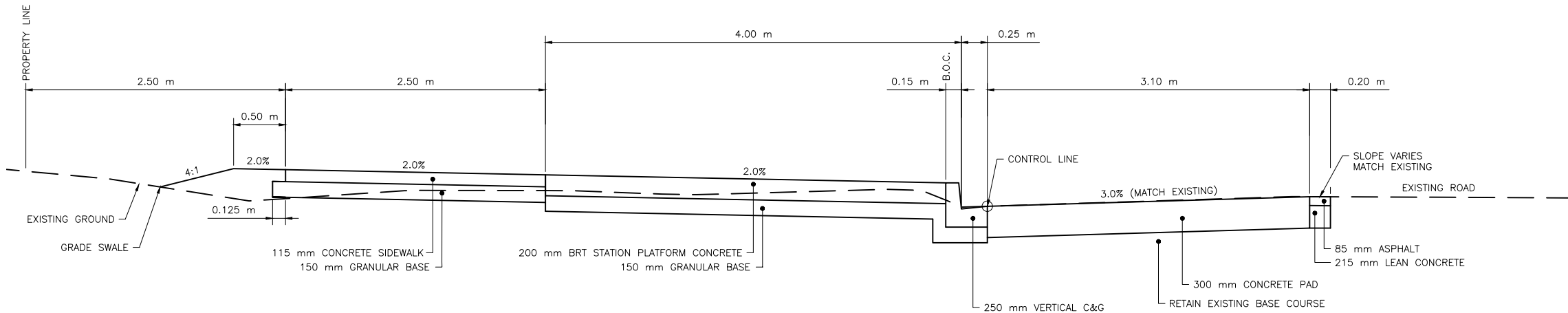


BUS RAPID TRANSIT SYSTEM
STATION 33
RED LINE
8TH STREET & ARLINGTON AVENUE
INSTALLATION PLAN

ENGINEER	
SCALES : HOR. 1:500 VERT. _____	DATE _____
SHEET NO. _____	PLAN NO. Z0012044-TR-2101

FILE NAME: Z0012044-TR-2100-CONTRACT\_2-STATION\_33.DWG PLOT: July 22, 2024 10:58 AM BY: MADHUKHANOV

- NOTES:
- SEE THE FOLLOWING STANDARD PLANS FOR FURTHER DETAILS:
    - FULL HEIGHT CURBS WITH GUTTER - 102-0002-001
    - GRADE CONSTRUCTION FOR CURB & GUTTER - 102-0002-018
    - GRADE CONSTRUCTION FOR WALKWAY & SEPARATE SIDEWALK - 102-0002-020
    - CONTROL JOINTS - 102-0002-021
    - DOWEL/CONTROL JOINT LOCATION AND SPACING - 102-0002-022
    - COMBINED SIDEWALK, VERTICAL CURB & GUTTER - 102-0002-029
    - SEPARATE SIDEWALK - 102-0002-031
    - GUTTER PATCH PAVING - 102-0002-049
    - TRANSITION TO 250 mm VERTICAL CURB - 102-0002-074



TYPICAL CROSS SECTION  
STA 2+120



11			
10			
9			
8			
7			
6			
5			
4	ISSUED FOR TENDER	2024-07-22	CIMA+
3	ISSUED FOR REVIEW	2024-07-05	CIMA+
2	ISSUED FOR REVIEW	2024-06-14	CIMA+
1	ISSUED FOR REVIEW	2024-05-24	CIMA+
	PLAN DESCRIPTION/REVISION	DATE	BY

SEAL

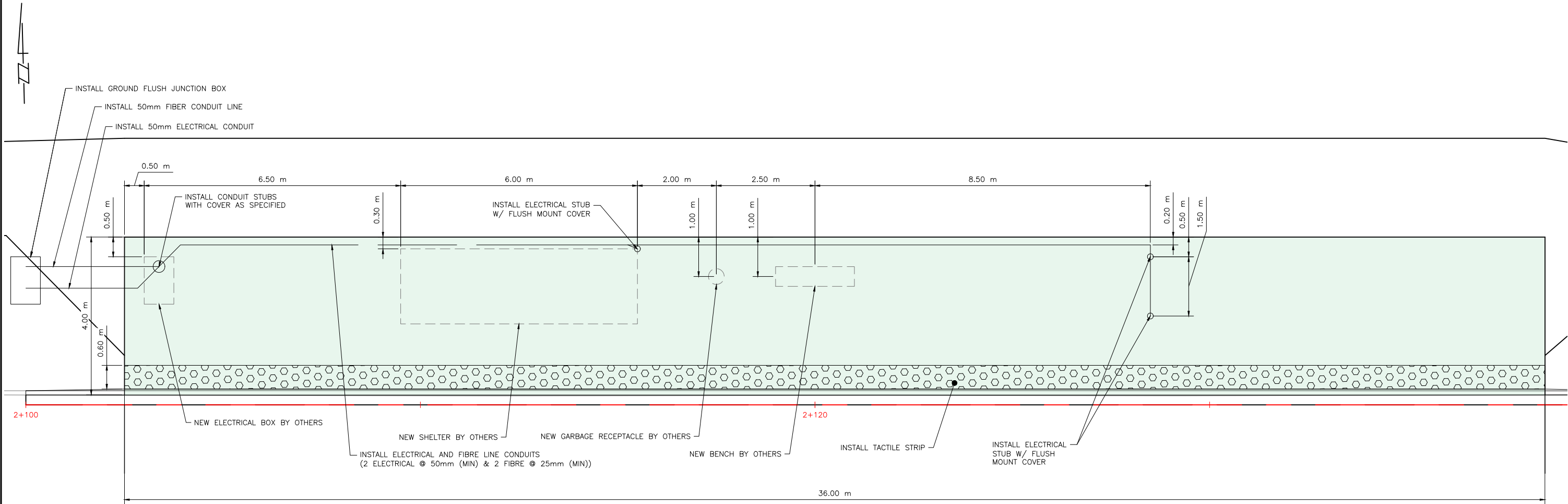
CHECKED BY:	CHECKED BY:
DATE	DATE
DRAWN BY	DATE



BUS RAPID TRANSIT SYSTEM  
STATION 33  
RED LINE  
8TH STREET & ARLINGTON AVENUE  
CROSS SECTIONS

ENGINEER	DATE
SCALES : HOR. 1:50 VERT. 1:50	
SHEET NO. -	PLAN NO. Z0012044-TR-2102

FILE NAME: Z0012044-TR-2100-CONTRACT\_2-STATION\_33.DWG PLOT: July 22, 2024 10:58 AM BY: MADU MUKHANOY



11			
10			
9			
8			
7			
6			
5			
4	ISSUED FOR TENDER	2024-07-22	CIMA+
3	ISSUED FOR REVIEW	2024-07-05	CIMA+
2	ISSUED FOR REVIEW	2024-06-14	CIMA+
1	ISSUED FOR REVIEW	2024-05-24	CIMA+
	PLAN DESCRIPTION/REVISION	DATE	BY

SEAL

CHECKED BY:	CHECKED BY:
DATE	DATE
DRAWN BY:	DATE








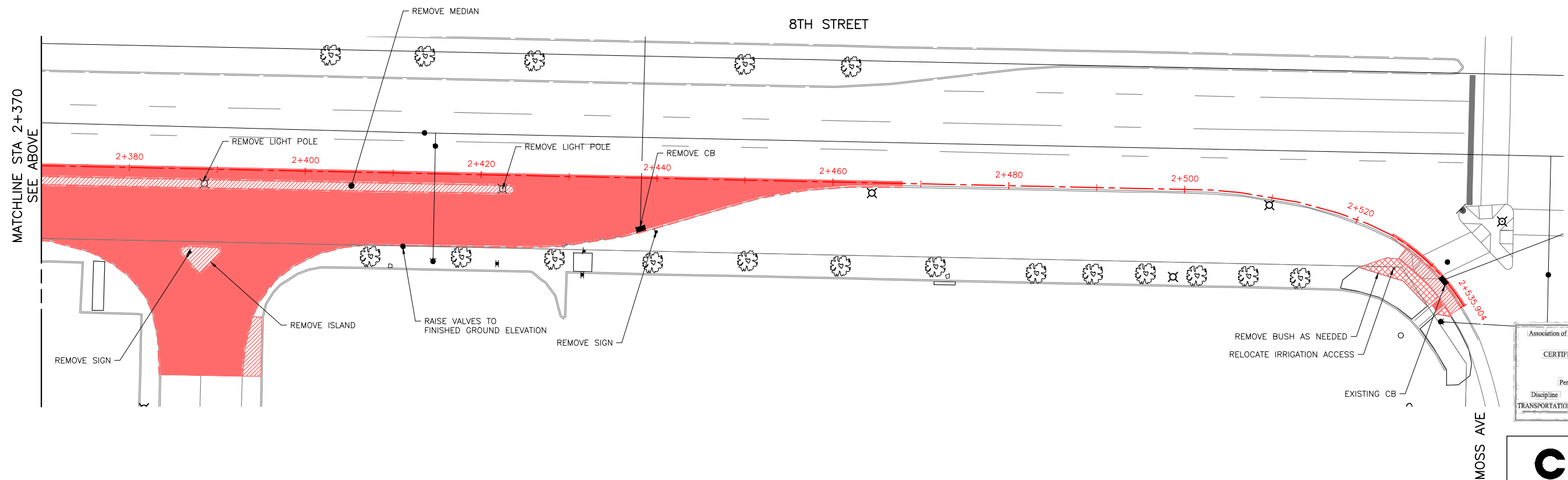
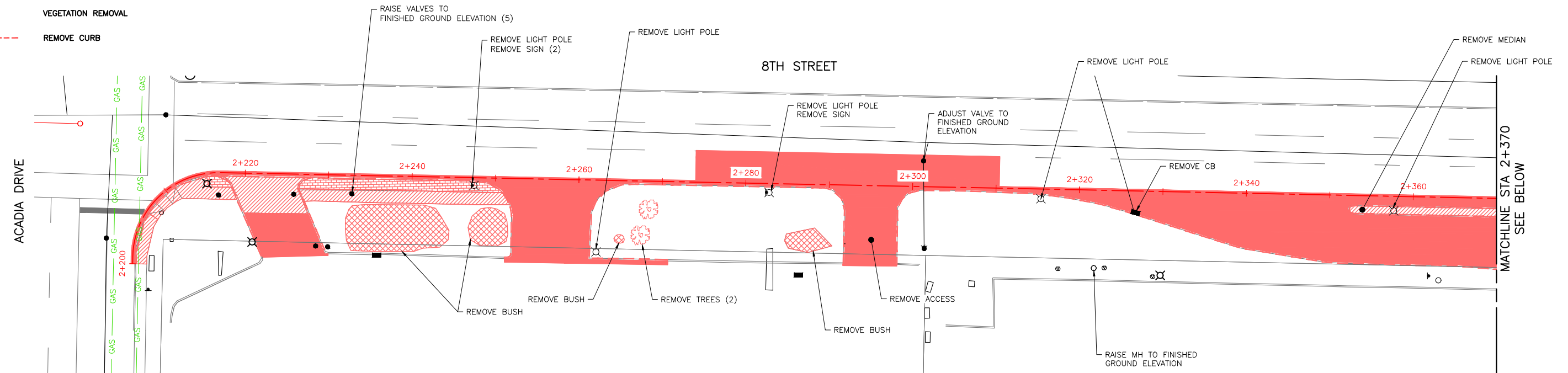
BUS RAPID TRANSIT SYSTEM  
STATION 33  
RED LINE  
8TH STREET & ARLINGTON AVENUE  
PLATFORM DETAILS

ENGINEER	
SCALES : HOR. 1:100 VERT. _____	DATE _____
SHEET NO. -	PLAN NO. Z0012044-TR-2103



LEGEND:

-  ASPHALT REMOVAL  
 CONCRETE REMOVAL  
 BRICK REMOVAL  
 VEGETATION REMOVAL  
 REMOVE CURB

**CIMA+**

11			
10			
9			
8			
7			
6			
5			
4			
3	ISSUED FOR TENDER	2024-07-22	CIMA+
2	ISSUED FOR REVIEW	2024-07-05	CIMA+
1	ISSUED FOR REVIEW	2024-06-14	CIMA+
	PLAN DESCRIPTION/REVISION	DATE	BY

CHECKED BY:	CHECKED BY:
DATE	DATE
DRAWN BY _____	DATE _____



BUS RAPID TRANSIT SYSTEM

STATION 34

8TH STREET & ACADIA DRIVE

## REMOVALS PLAN

ENGINEER

SCALES :  
 HOR. 1:500  
 VERT. \_\_\_\_\_

\_\_\_\_\_ DATE

SHEET NO.	PLAN NO.
-----------	----------

Z0012044-TR-2200

LEGEND:

- ASPHALT INSTALLATION

CONCRETE INSTALLATION

BRT STATION PLATFORM INSTALLATION

DAYLIGHT - CUT

DAYLIGHT - FILL
- PEDESTRIAN RAMP INSTALLATION

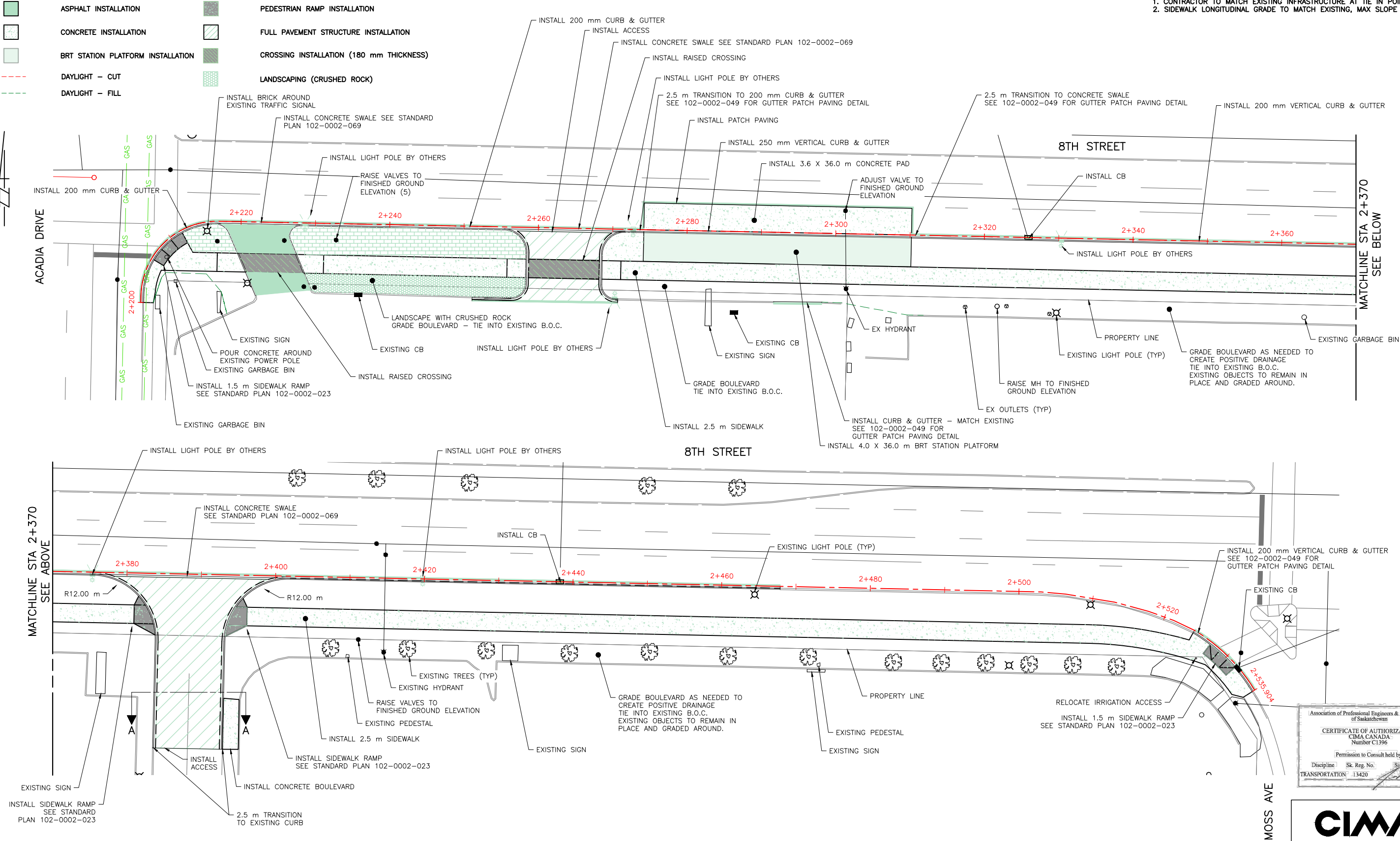
FULL PAVEMENT STRUCTURE INSTALLATION

CROSSING INSTALLATION (180 mm THICKNESS)

LANDSCAPING (CRUSHED ROCK)

NOTES:

1. CONTRACTOR TO MATCH EXISTING INFRASTRUCTURE AT TIE IN POINTS.
2. SIDEWALK LONGITUDINAL GRADE TO MATCH EXISTING, MAX SLOPE 3.0%



11			
10			
9			
8			
7			
6			
5			
4			
3	ISSUED FOR TENDER	2024-07-22	CIMA+
2	ISSUED FOR REVIEW	2024-07-05	CIMA+
1	ISSUED FOR REVIEW	2024-06-14	CIMA+
	PLAN DESCRIPTION/REVISION	DATE	BY

CHECKED BY:	CHECKED BY:
DATE	DATE
DRAWN BY:	DATE

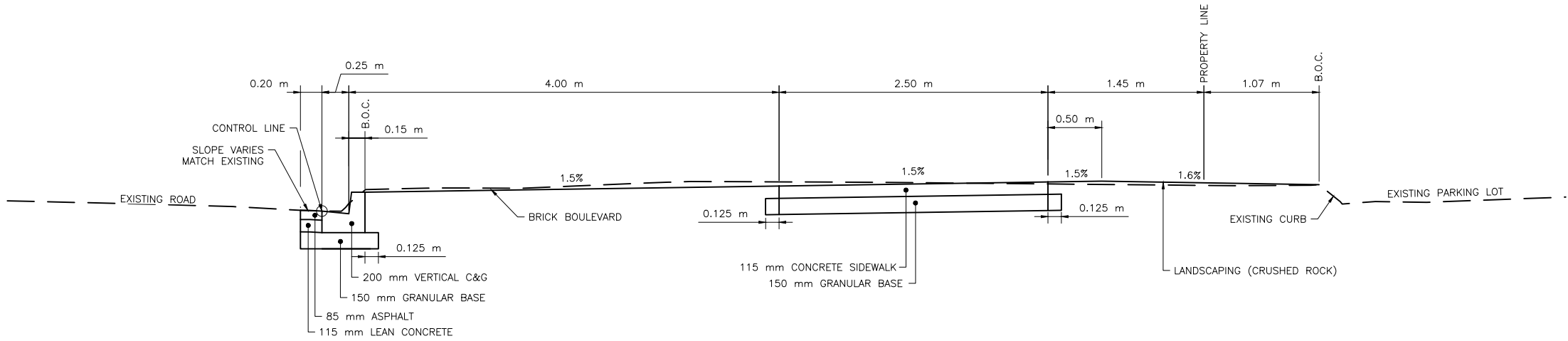


BUS RAPID TRANSIT SYSTEM
STATION 34
RED LINE
8TH STREET & ACADIA DRIVE
INSTALLATION PLAN

ENGINEER	DATE
SCALES : HOR. 1:500 VERT.	
SHEET NO. -	PLAN NO. Z0012044-TR-2201

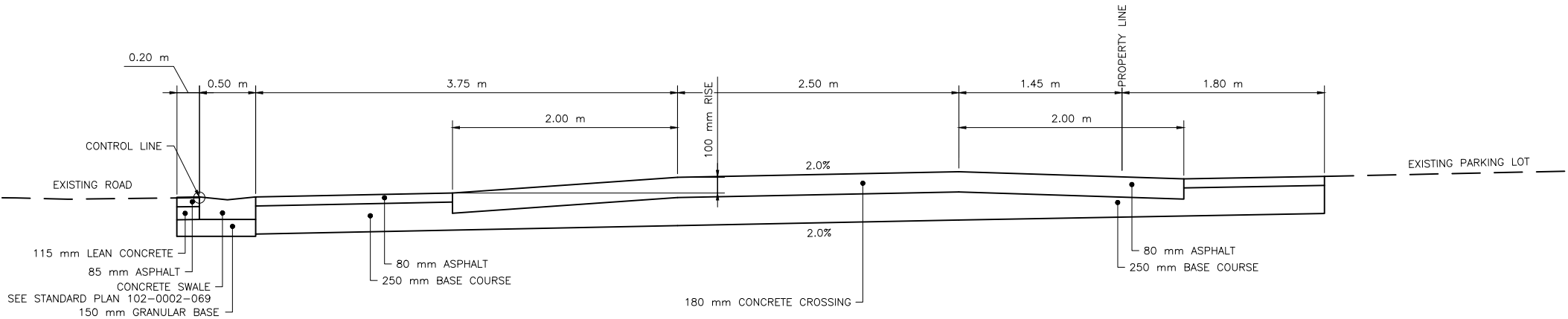


FILE NAME: Z0012044-TR-2200-CONTRACT\_2\_STATION\_34.DWG PLOT: July 22, 2024 11:02 AM BY: MADU MUKHANOY

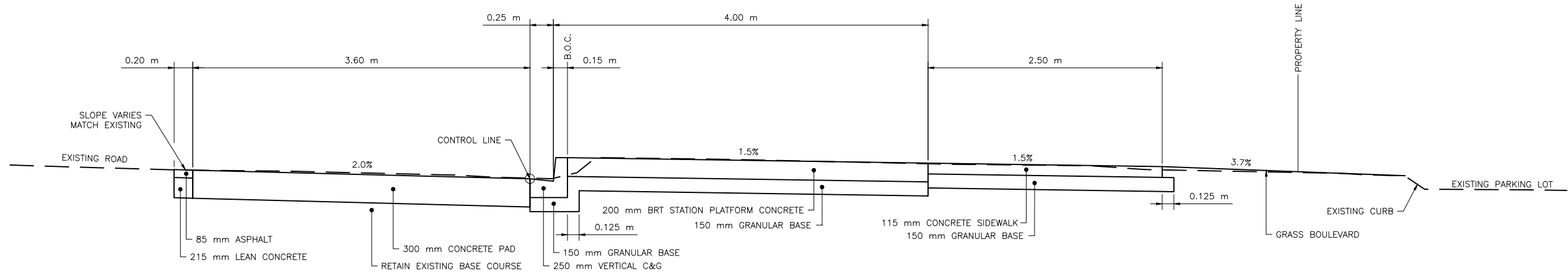


TYPICAL CROSS SECTION  
STA 2+235

- NOTES:
- SEE THE FOLLOWING STANDARD PLANS FOR FURTHER DETAILS:
    - FULL HEIGHT CURBS WITH GUTTER - 102-0002-001
    - SEPARATE DROPPED CURB CROSSING - 102-0002-003
    - SEPARATE SIDEWALK, VERTICAL CURB & GUTTER - 102-0002-010
    - CURB RETURN CROSSING, SEPARATE SIDEWALK & VERTICAL CURB - 102-0002-13
    - CROSSING, CURB DETAIL, PERSPECTIVE VIEW - 102-0002-017
    - GRADE CONSTRUCTION FOR CURB & GUTTER - 102-0002-018
    - GRADE CONSTRUCTION FOR SIDEWALK, CURB & GUTTER - 102-0002-019
    - GRADE CONSTRUCTION FOR WALKWAY & SEPARATE SIDEWALK - 102-0002-020
    - CONTROL JOINTS - 102-0002-021
    - DOWEL/CONTROL JOINT LOCATION AND SPACING - 102-0002-022
    - TYPICAL TRANSITION, COMBINED SIDEWALK & CURB - 102-0002-028
    - COMBINED SIDEWALK, VERTICAL CURB & GUTTER - 102-0002-029
    - SEPARATE SIDEWALK - 102-0002-031
    - CONCRETE SWALE - 102-0002-069



TYPICAL CROSS SECTION  
STA 2+260



TYPICAL CROSS SECTION  
STA 2+280



**CIMA+**

11			
10			
9			
8			
7			
6			
5			
4			
3	ISSUED FOR TENDER	2024-07-22	CIMA+
2	ISSUED FOR REVIEW	2024-07-05	CIMA+
1	ISSUED FOR REVIEW	2024-06-14	CIMA+
	PLAN DESCRIPTION/REVISION	DATE	BY

SEAL

CHECKED BY:	CHECKED BY:
DATE	DATE
DRAWN BY:	DATE

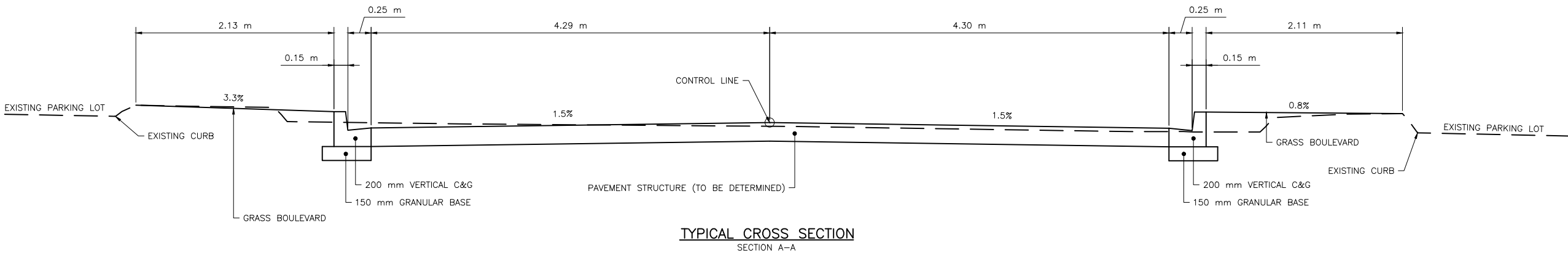
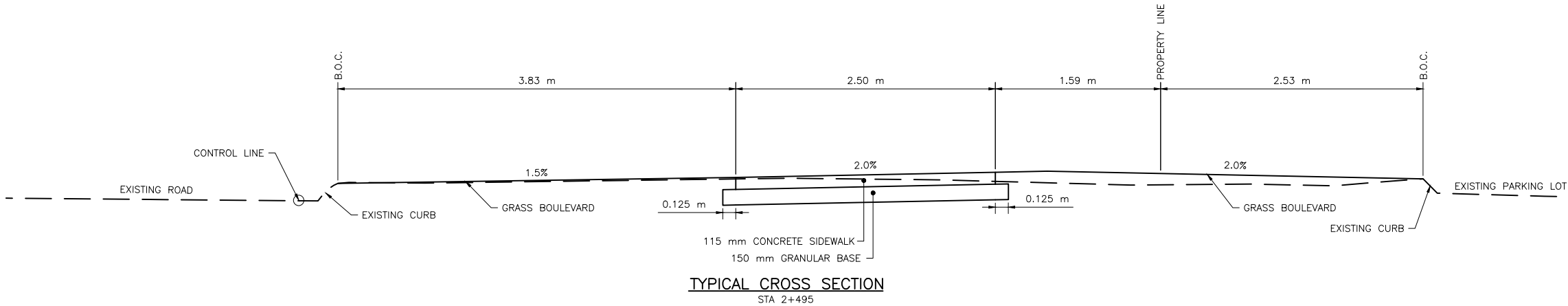
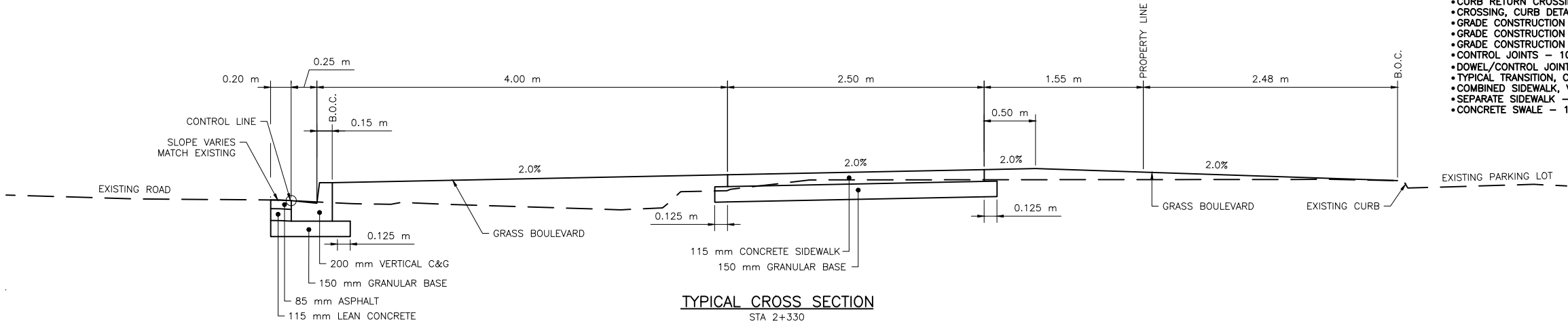


BUS RAPID TRANSIT SYSTEM  
STATION 34  
RED LINE  
8TH STREET & ACADIA DRIVE  
CROSS SECTIONS

ENGINEER	
SCALES :	
HOR. 1:50	DATE
VERT.	
SHEET NO.	PLAN NO.
-	Z0012044-TR-2202

FILE NAME: Z0012044-TR-2200-CONTRACT\_2\_STATION\_34.DWG PLOT: July 22, 2024 11:02 AM BY: MADI MUKHANOY

- NOTES:
- SEE THE FOLLOWING STANDARD PLANS FOR FURTHER DETAILS:
    - FULL HEIGHT CURBS WITH GUTTER - 102-0002-001
    - SEPARATE DROPPED CURB CROSSING - 102-0002-003
    - SEPARATE SIDEWALK, VERTICAL CURB & GUTTER - 102-0002-010
    - CURB RETURN CROSSING, SEPARATE SIDEWALK & VERTICAL CURB - 102-0002-13
    - CROSSING, CURB DETAIL, PERSPECTIVE VIEW - 102-0002-017
    - GRADE CONSTRUCTION FOR CURB & GUTTER - 102-0002-018
    - GRADE CONSTRUCTION FOR SIDEWALK, CURB & GUTTER - 102-0002-019
    - GRADE CONSTRUCTION FOR WALKWAY & SEPARATE SIDEWALK - 102-0002-020
    - CONTROL JOINTS - 102-0002-021
    - DOWEL/CONTROL JOINT LOCATION AND SPACING - 102-0002-022
    - TYPICAL TRANSITION, COMBINED SIDEWALK & CURB - 102-0002-028
    - COMBINED SIDEWALK, VERTICAL CURB & GUTTER - 102-0002-029
    - SEPARATE SIDEWALK - 102-0002-031
    - CONCRETE SWALE - 102-0002-069



11			
10			
9			
8			
7			
6			
5			
4			
3	ISSUED FOR TENDER	2024-07-22	CIMA+
2	ISSUED FOR REVIEW	2024-07-05	CIMA+
1	ISSUED FOR REVIEW	2024-06-14	CIMA+
	PLAN DESCRIPTION/REVISION	DATE	BY

SEAL
------

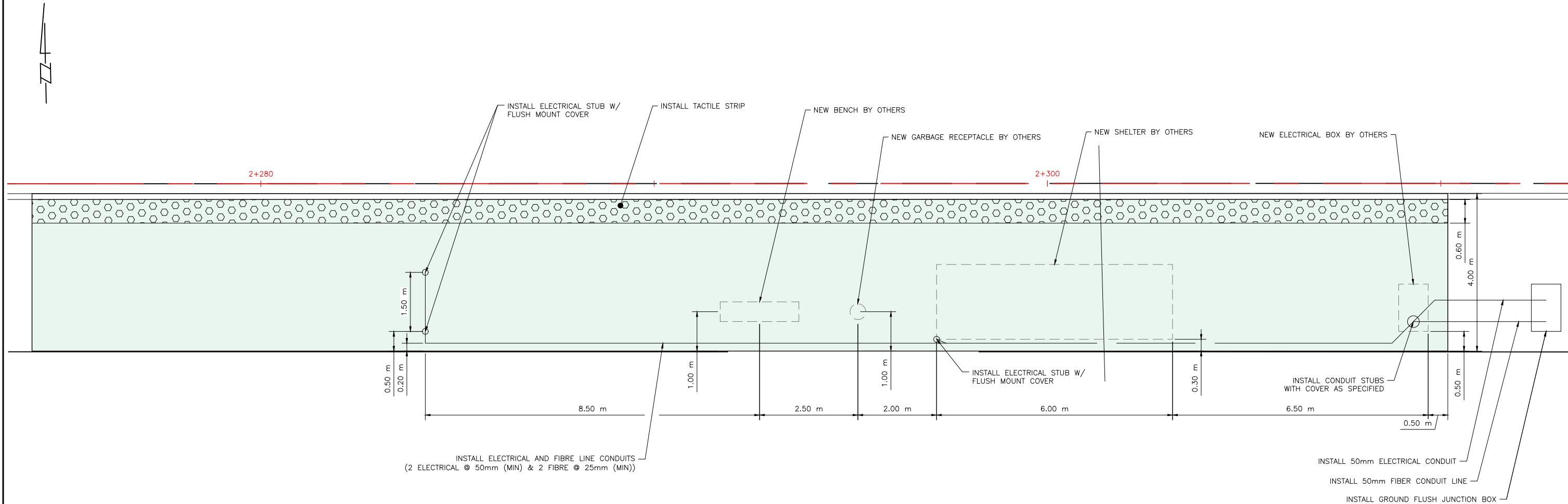
CHECKED BY:	CHECKED BY:
DATE	DATE
DRAWN BY:	DATE



BUS RAPID TRANSIT SYSTEM  
STATION 34  
RED LINE  
8TH STREET & ACADIA DRIVE  
CROSS SECTIONS

ENGINEER	DATE
SCALES : HOR. 1:50 VERT.	
SHEET NO.	PLAN NO.
-	Z0012044-TR-2203

FILE NAME: Z0012044-TR-2200-CONTRACT\_2-STATION\_34.DWG PLOT: July 22, 2024 11:02 AM BY: MADI MUKHANOY



11			
10			
9			
8			
7			
6			
5			
4			
3	ISSUED FOR TENDER	2024-07-22	CIMA+
2	ISSUED FOR REVIEW	2024-07-05	CIMA+
1	ISSUED FOR REVIEW	2024-06-14	CIMA+
	PLAN DESCRIPTION/REVISION	DATE	BY

SEAL

CHECKED BY:	CHECKED BY:
DATE	DATE
DRAWN BY:	DATE



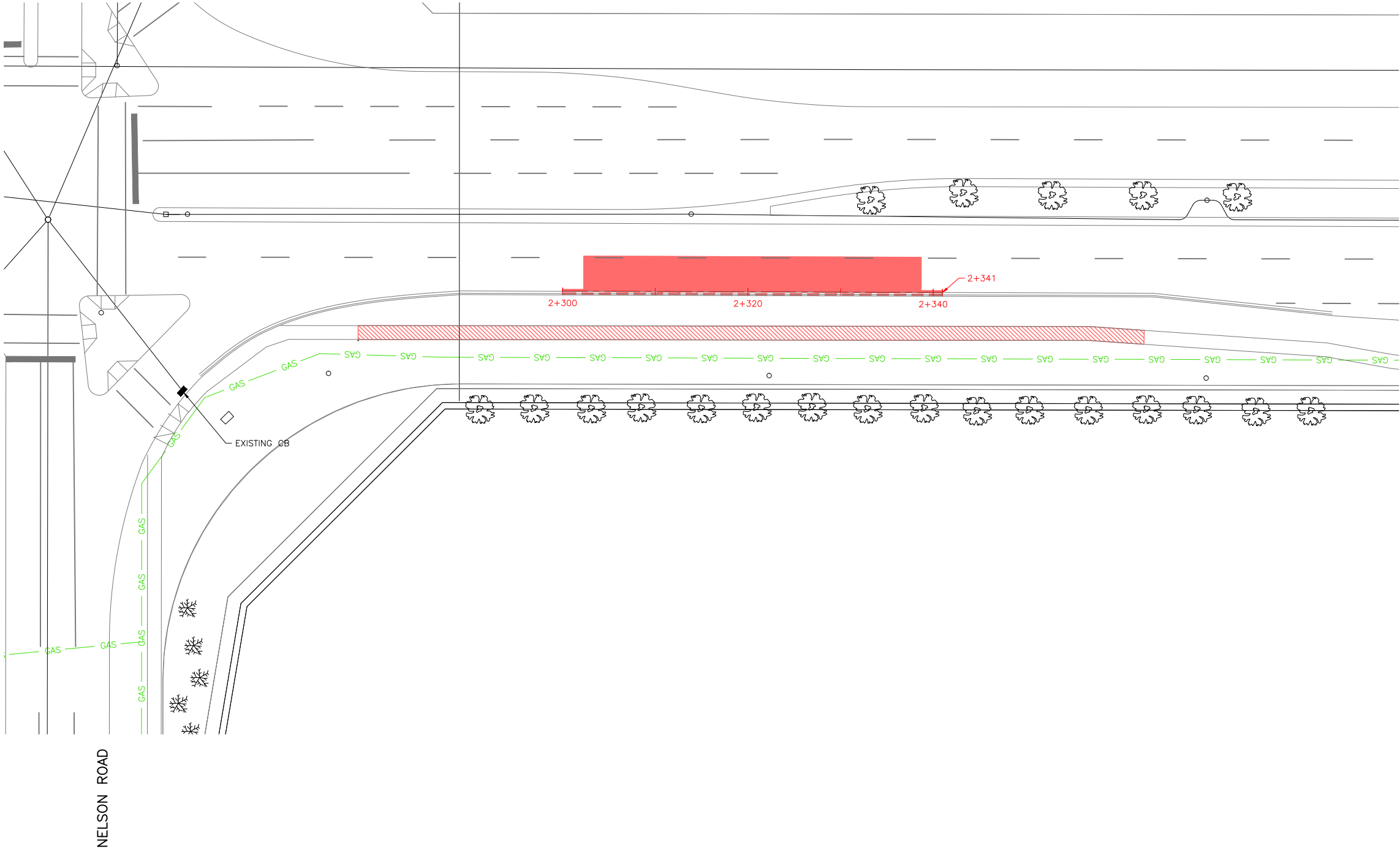
BUS RAPID TRANSIT SYSTEM  
STATION 34  
RED LINE  
8TH STREET & ACADIA DRIVE  
PLATFORM DETAILS

ENGINEER	
SCALES : HOR. 1:100 VERT. 1:100	DATE
SHEET NO. -	PLAN NO. Z0012044-TR-2204

FILE NAME: Z0012044-TR-2300-CONTRACT\_2-STATION\_99.DWG PLOT: July 22, 2024 11:06 AM BY: MADHUKHANOV

LEGEND:

- ASPHALT REMOVAL
- CONCRETE REMOVAL
- REMOVE CURB



McORMOND DRIVE

NELSON ROAD



CIMA+

11			
10			
9			
8			
7			
6			
5			
4	ISSUED FOR TENDER	2024-07-22	CIMA+
3	ISSUED FOR REVIEW	2024-07-05	CIMA+
2	ISSUED FOR REVIEW	2024-06-14	CIMA+
1	ISSUED FOR REVIEW	2024-05-29	CIMA+
	PLAN DESCRIPTION/REVISION	DATE	BY

SEAL

CHECKED BY:	CHECKED BY:
DATE	DATE
DRAWN BY:	DATE



BUS RAPID TRANSIT SYSTEM

STATION 99  
GREEN LINE  
McORMOND DRIVE & NELSON ROAD  
REMOVALS PLAN

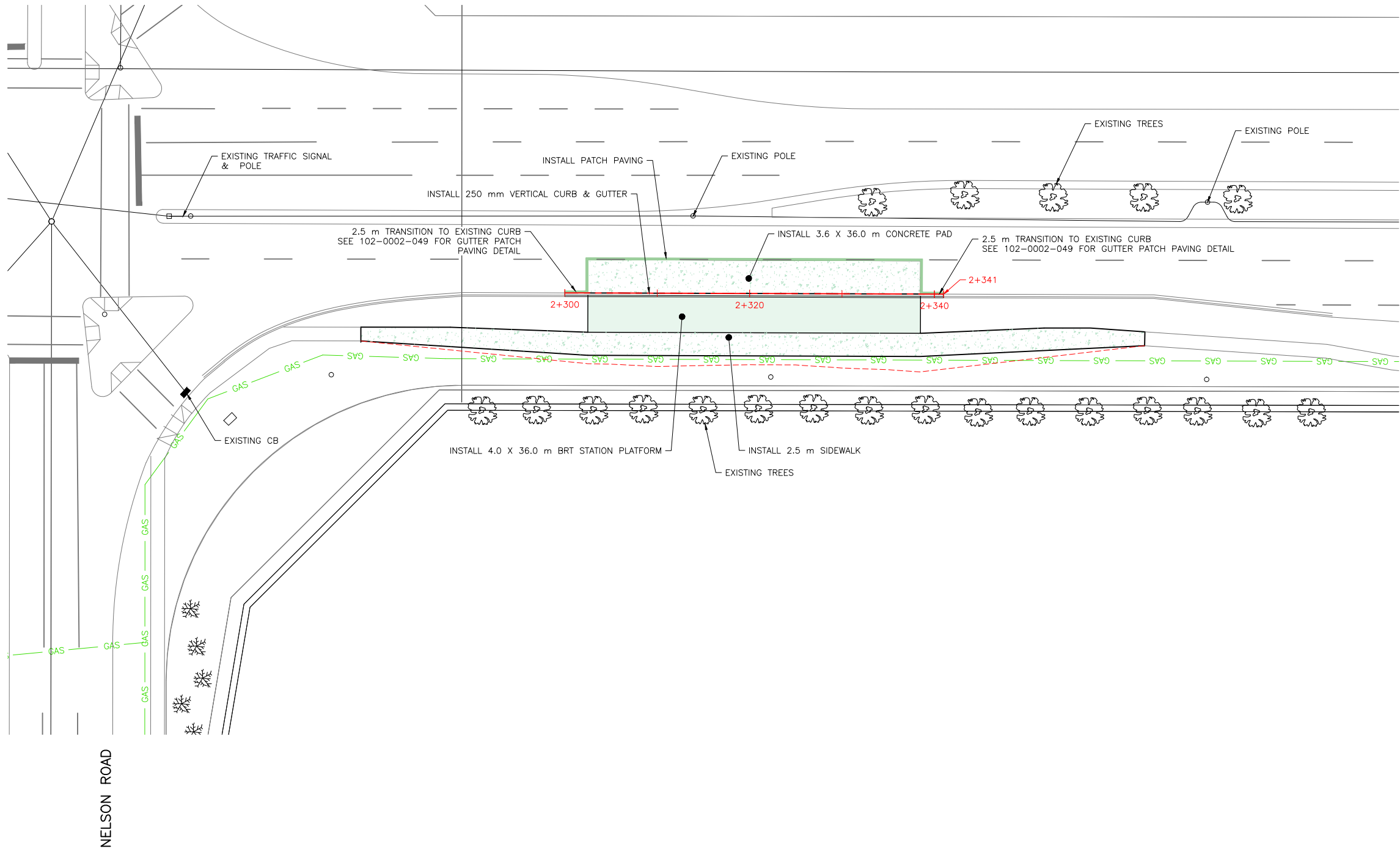
ENGINEER	
SCALES :	
HOR. 1:500	DATE
VERT.	
SHEET NO.	PLAN NO.
-	Z0012044-TR-2300

LEGEND:

- ASPHALT INSTALLATION
- CONCRETE INSTALLATION
- BRT STATION PLATFORM INSTALLATION
- DAYLIGHT - CUT
- DAYLIGHT - FILL

NOTES:

1. CONTRACTOR TO MATCH EXISTING INFRASTRUCTURE AT TIE IN POINTS.
2. SIDEWALK LONGITUDINAL GRADE TO MATCH EXISTING, MAX SLOPE 3.0%



McORMOND DRIVE

NELSON ROAD



11			
10			
9			
8			
7			
6			
5			
4	ISSUED FOR TENDER	2024-07-22	CIMA+
3	ISSUED FOR REVIEW	2024-07-05	CIMA+
2	ISSUED FOR REVIEW	2024-06-14	CIMA+
1	ISSUED FOR REVIEW	2024-05-29	CIMA+
	PLAN DESCRIPTION/REVISION	DATE	BY

SEAL

CHECKED BY:	CHECKED BY:
DATE	DATE
DRAWN BY:	DATE



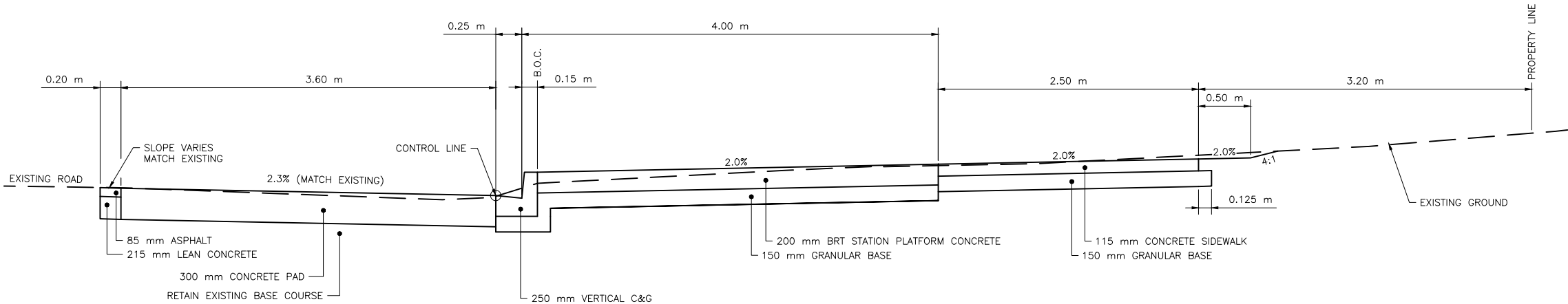
BUS RAPID TRANSIT SYSTEM

STATION 99  
GREEN LINE  
McORMOND DRIVE & NELSON ROAD  
INSTALLATION PLAN

ENGINEER	
SCALES : HOR. 1:500 VERT. _____	DATE _____
SHEET NO. _____	PLAN NO. _____
—	Z0012044-TR-2301

FILE NAME: Z0012044-TR-2300-CONTRACT\_2-STATION\_99.DWG PLOT: July 22, 2024 11:06 AM BY: MADHUKHANOV

- NOTES:
- SEE THE FOLLOWING STANDARD PLANS FOR FURTHER DETAILS:
    - FULL HEIGHT CURBS WITH GUTTER - 102-0002-001
    - GRADE CONSTRUCTION FOR CURB & GUTTER - 102-0002-018
    - GRADE CONSTRUCTION FOR WALKWAY & SEPARATE SIDEWALK - 102-0002-020
    - CONTROL JOINTS - 102-0002-021
    - DOWEL/CONTROL JOINT LOCATION AND SPACING - 102-0002-022
    - COMBINED SIDEWALK, VERTICAL CURB & GUTTER - 102-0002-029
    - SEPARATE SIDEWALK - 102-0002-031
    - GUTTER PATCH PAVING - 102-0002-049
    - TRANSITION TO 250 mm VERTICAL CURB - 102-0002-074



TYPICAL CROSS SECTION  
STA 2+320



11			
10			
9			
8			
7			
6			
5			
4	ISSUED FOR TENDER	2024-07-22	CIMA+
3	ISSUED FOR REVIEW	2024-07-05	CIMA+
2	ISSUED FOR REVIEW	2024-06-14	CIMA+
1	ISSUED FOR REVIEW	2024-05-29	CIMA+
	PLAN DESCRIPTION/REVISION	DATE	BY

SEAL

CHECKED BY:	CHECKED BY:
DATE	DATE
DRAWN BY:	DATE

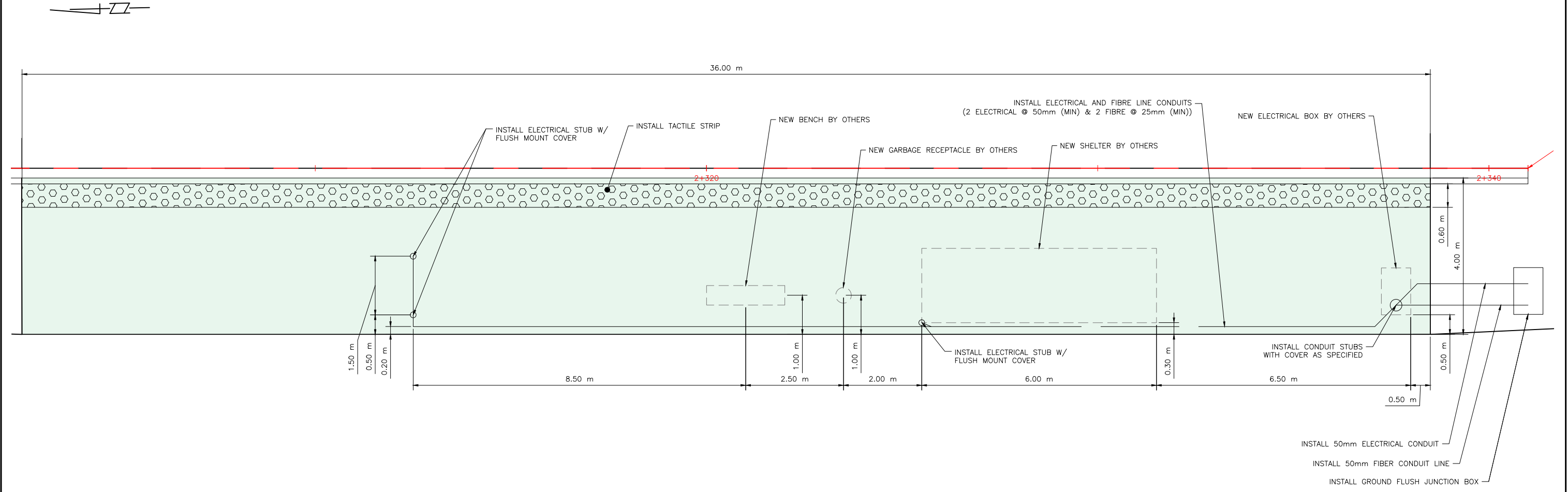


BUS RAPID TRANSIT SYSTEM  
STATION 99  
GREEN LINE  
McCORMOND DRIVE & NELSON ROAD  
CROSS SECTIONS

ENGINEER	
SCALES :	
HOR. 1:50	DATE
VERT.	
SHEET NO.	PLAN NO.
-	Z0012044-TR-2302



FILE NAME: Z0012044-TR-2300-CONTRACT\_2-STATION\_99.DWG PLOT: July 22, 2024 11:06 AM BY: MADI MUKHANOY



**CIMA+**

ENGINEER	
Scales: 1:100	
HOR.	DATE
VERT.	
SHEET NO.	PLAN NO.
-	Z0012044-TR-2303

11			
10			
9			
8			
7			
6			
5			
4	ISSUED FOR TENDER	2024-07-22	CIMA+
3	ISSUED FOR REVIEW	2024-07-05	CIMA+
2	ISSUED FOR REVIEW	2024-06-14	CIMA+
1	ISSUED FOR REVIEW	2024-05-29	CIMA+
	PLAN DESCRIPTION/REVISION	DATE	BY

SEAL

CHECKED BY:	CHECKED BY:
DATE	DATE
DRAWN BY:	DATE



BUS RAPID TRANSIT SYSTEM  
STATION 99  
GREEN LINE  
McCORMOND DRIVE & NELSON ROAD  
PLATFORM DETAILS

FILE NAME: Z0012044-TR-2400-CONTRACT\_2-STATION\_100.DWG PLOT: July 22, 2024 11:17 AM BY: MADJ MUKHANOV

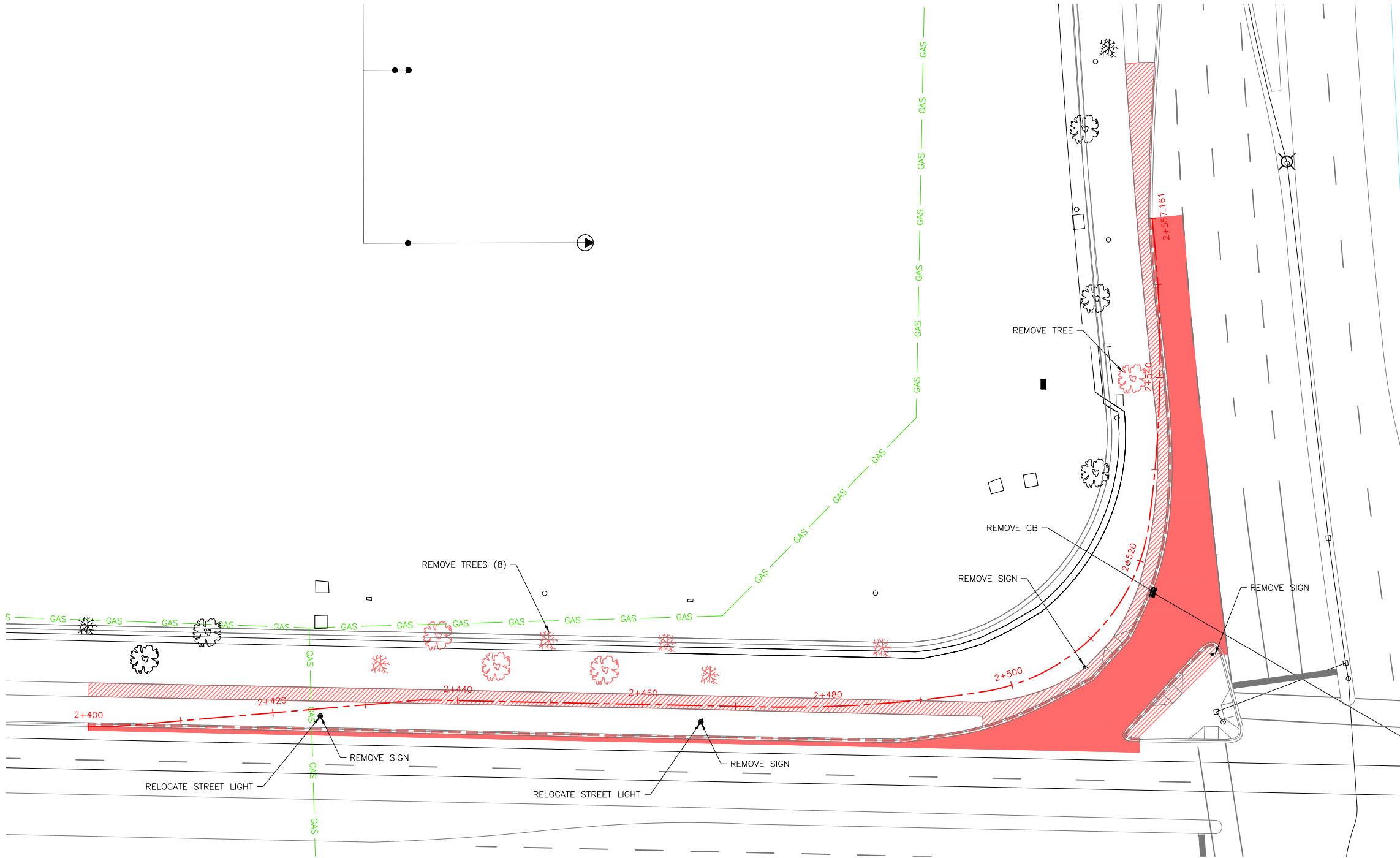
LEGEND:

- ASPHALT REMOVAL
- CONCRETE REMOVAL
- REMOVE CURB



ATTRIDGE DRIVE

McORMOND DRIVE



11			
10			
9			
8			
7			
6			
5			
4	ISSUED FOR TENDER	2024-07-22	CIMA+
3	ISSUED FOR REVIEW	2024-07-05	CIMA+
2	ISSUED FOR REVIEW	2024-06-14	CIMA+
1	ISSUED FOR REVIEW	2024-06-04	CIMA+
	PLAN DESCRIPTION/REVISION	DATE	BY

SEAL

CHECKED BY:	CHECKED BY:
DATE	DATE
DRAWN BY:	DATE



BUS RAPID TRANSIT SYSTEM  
STATION 100  
GREEN LINE  
McORMOND DRIVE & ATTRIDGE DRIVE  
REMOVALS PLAN

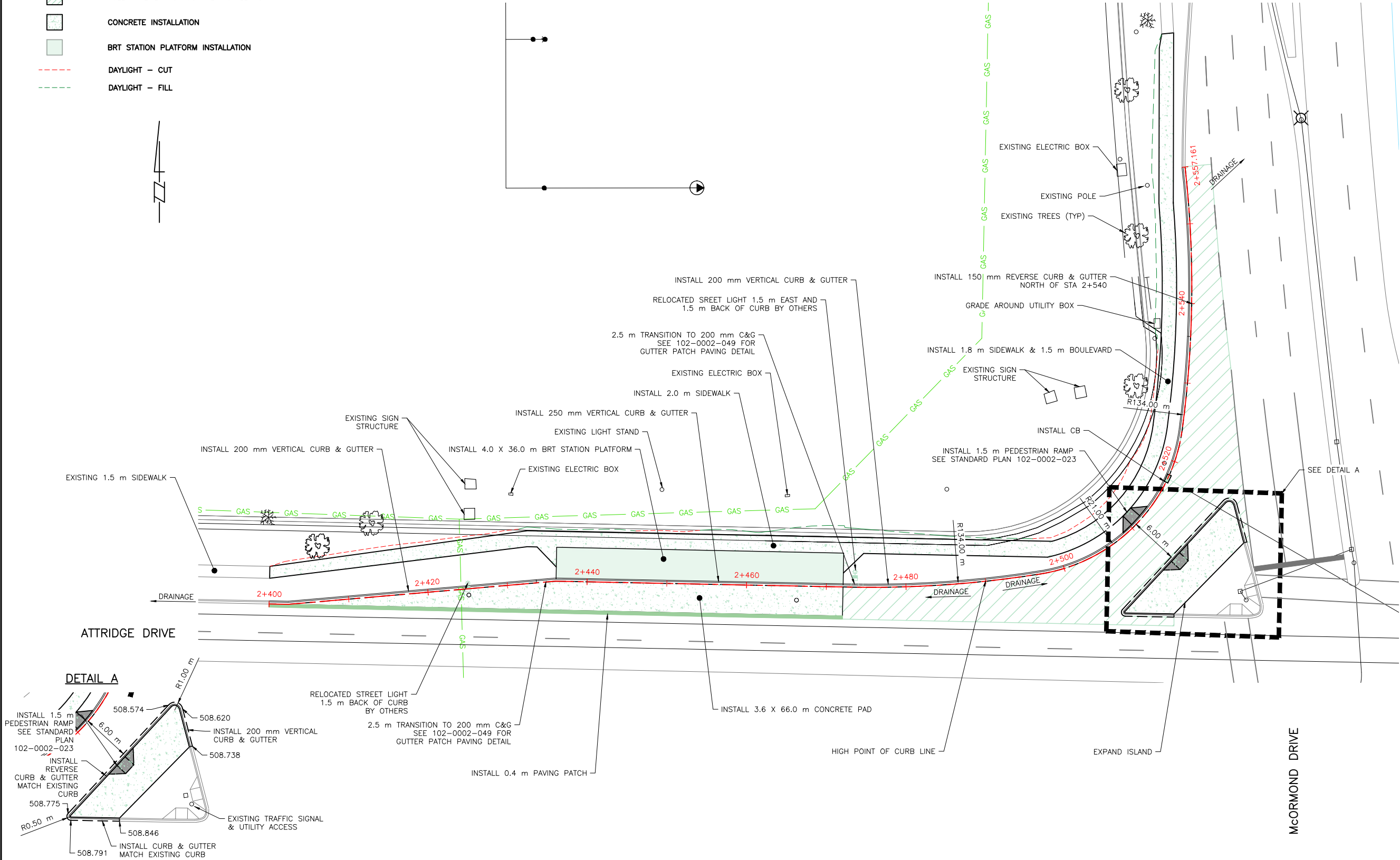
ENGINEER	
SCALES : HOR. 1:500 VERT. DATE	
SHEET NO. -	PLAN NO. Z0012044-TR-2400

LEGEND:

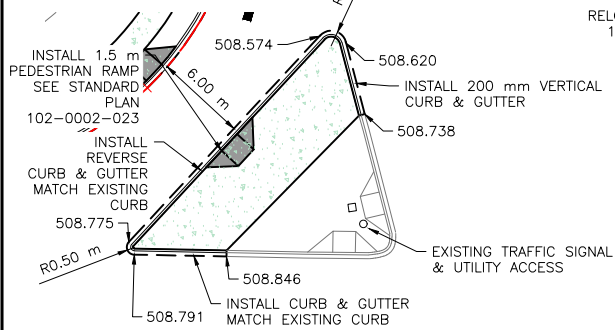
- ASPHALT INSTALLATION
- FULL PAVEMENT STRUCTURE INSTALLATION
- CONCRETE INSTALLATION
- BRT STATION PLATFORM INSTALLATION
- DAYLIGHT - CUT
- DAYLIGHT - FILL

NOTES:

- CONTRACTOR TO MATCH EXISTING INFRASTRUCTURE AT TIE IN POINTS.
- SIDEWALK LONGITUDINAL GRADE TO MATCH EXISTING, MAX SLOPE 3.0%



DETAIL A



11			
10			
9			
8			
7			
6			
5			
4	ISSUED FOR TENDER	2024-07-22	CIMA+
3	ISSUED FOR REVIEW	2024-07-05	CIMA+
2	ISSUED FOR REVIEW	2024-06-14	CIMA+
1	ISSUED FOR REVIEW	2024-06-04	CIMA+
	PLAN DESCRIPTION/REVISION	DATE	BY

	CHECKED BY:	CHECKED BY:
DATE		DATE
DRAWN BY		DATE

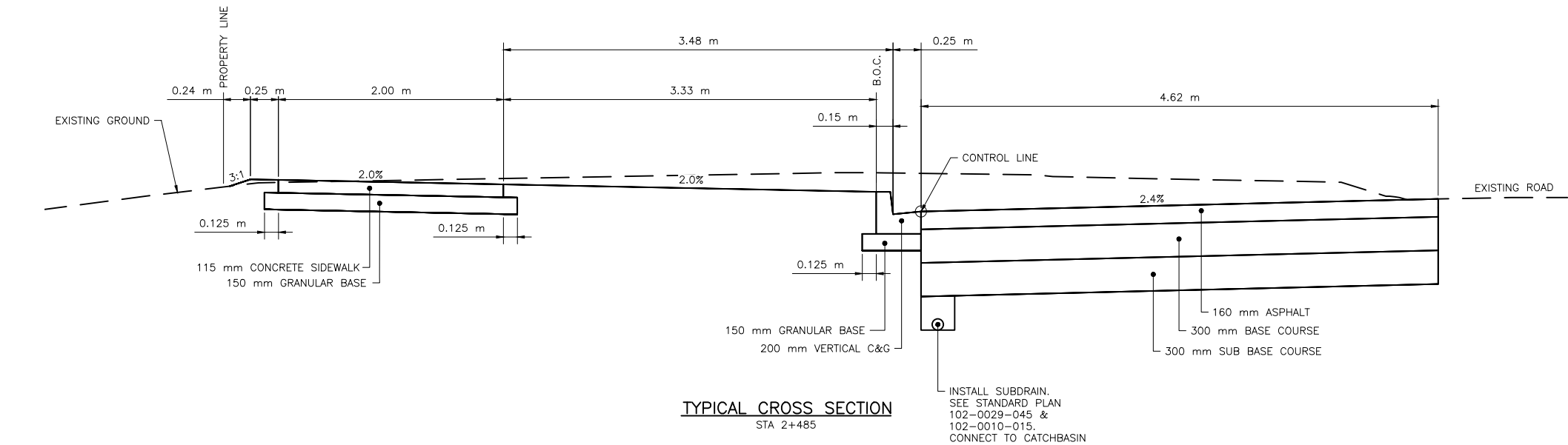
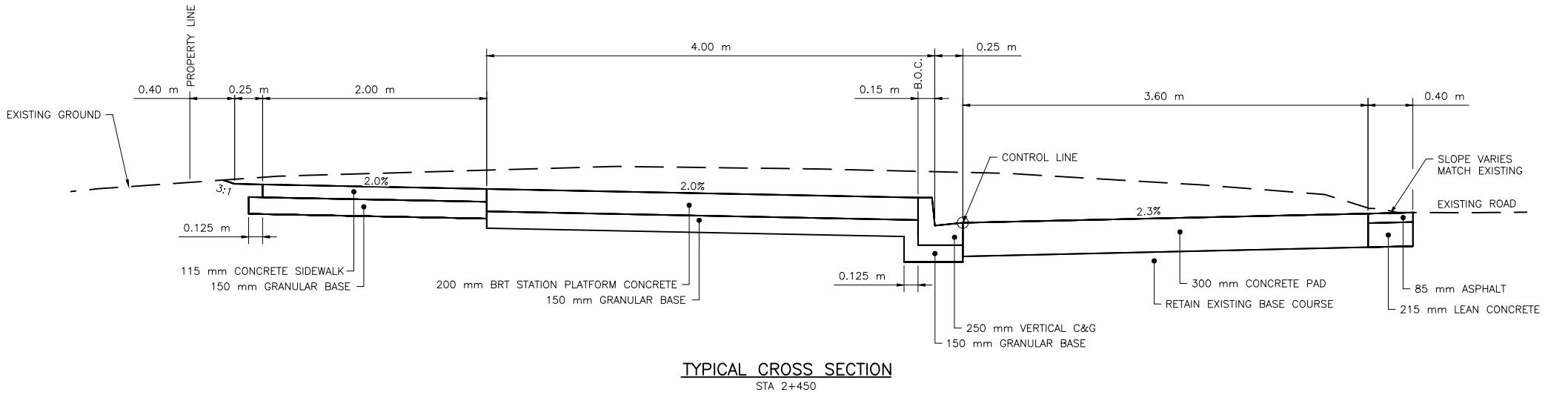
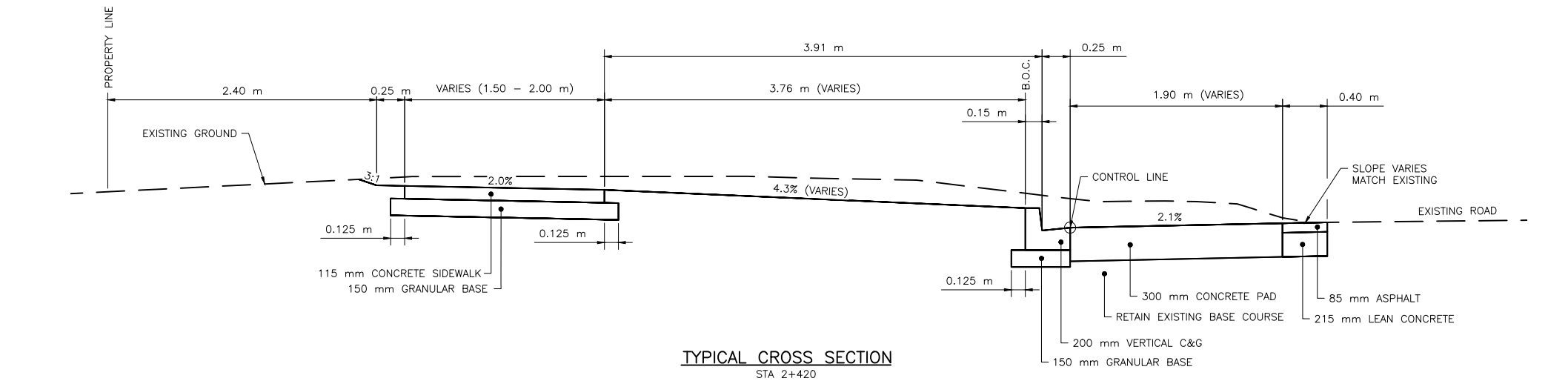


BUS RAPID TRANSIT SYSTEM  
STATION 100  
GREEN LINE  
McCORMOND DRIVE & ATTRIDGE DRIVE  
INSTALLATION PLAN

ENGINEER	
SCALES :	
HOR. 1:500	DATE
VERT.	
SHEET NO.	PLAN NO.
-	Z0012044-TR-2401

FILE NAME: Z0012044-TR-2400-CONTRACT\_2\_STATION\_100.DWG PLOT: July 22, 2024 11:17 AM BY: MADU MUKHANOY

- NOTES:
- SEE THE FOLLOWING STANDARD PLANS FOR FURTHER DETAILS:
    - FULL HEIGHT CURBS WITH GUTTER - 102-0002-001
    - GRADE CONSTRUCTION FOR CURB & GUTTER - 102-0002-018
    - GRADE CONSTRUCTION FOR SIDEWALK, CURB & GUTTER - 102-0002-019
    - GRADE CONSTRUCTION FOR WALKWAY & SEPARATE SIDEWALK - 102-0002-020
    - CONTROL JOINTS - 102-0002-021
    - DOWEL/CONTROL JOINT LOCATION AND SPACING - 102-0002-022
    - TYPICAL TRANSITION, COMBINED SIDEWALK & CURB - 102-0002-028
    - COMBINED SIDEWALK, VERTICAL CURB & GUTTER - 102-0002-029
    - SEPARATE SIDEWALK - 102-0002-031
    - GUTTER PATCH PAVING - 102-0002-049
    - TRANSITION TO 250 mm VERTICAL CURB - 102-0002-074



11			
10			
9			
8			
7			
6			
5			
4	ISSUED FOR TENDER	2024-07-22	CIMA+
3	ISSUED FOR REVIEW	2024-07-05	CIMA+
2	ISSUED FOR REVIEW	2024-06-14	CIMA+
1	ISSUED FOR REVIEW	2024-06-04	CIMA+
	PLAN DESCRIPTION/REVISION	DATE	BY

SEAL

CHECKED BY:	CHECKED BY:
DATE	DATE
DRAWN BY:	DATE



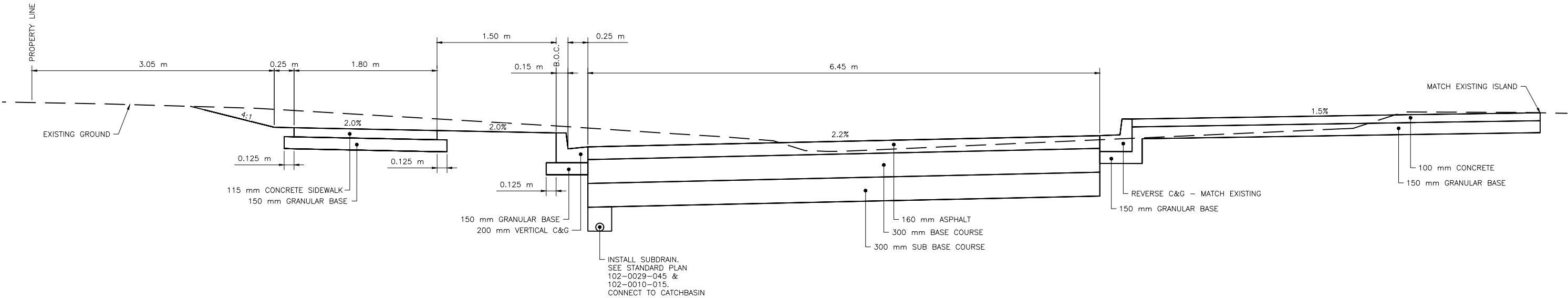
BUS RAPID TRANSIT SYSTEM  
STATION 100  
GREEN LINE  
McCORMOND DRIVE & ATTRIDGE DRIVE  
CROSS SECTIONS

ENGINEER	
SCALES:	
HOR. 1:50	DATE
VERT.	
SHEET NO.	PLAN NO.
-	Z0012044-TR-2402

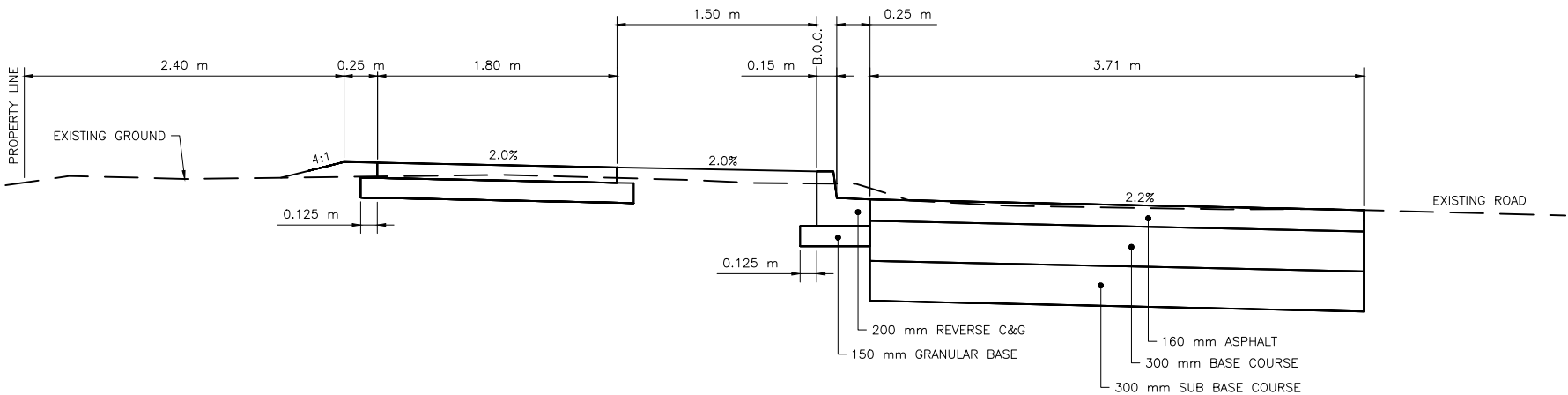
FILE NAME: Z0012044-TR-2400-CONTRACT\_2-STATION\_100.DWG PLOT: July 22, 2024 11:17 AM BY: MADHUKHANOV

NOTES:

1. SEE THE FOLLOWING STANDARD PLANS FOR FURTHER DETAILS:
- FULL HEIGHT CURBS WITH GUTTER - 102-0002-001
  - GRADE CONSTRUCTION FOR CURB & GUTTER - 102-0002-018
  - GRADE CONSTRUCTION FOR SIDEWALK, CURB & GUTTER - 102-0002-019
  - GRADE CONSTRUCTION FOR WALKWAY & SEPARATE SIDEWALK - 102-0002-020
  - CONTROL JOINTS - 102-0002-021
  - DOWEL/CONTROL JOINT LOCATION AND SPACING - 102-0002-022
  - TYPICAL TRANSITION, COMBINED SIDEWALK & CURB - 102-0002-028
  - COMBINED SIDEWALK, VERTICAL CURB & GUTTER - 102-0002-029
  - SEPARATE SIDEWALK - 102-0002-031
  - GUTTER PATCH PAVING - 102-0002-049
  - TRANSITION TO 250 mm VERTICAL CURB - 102-0002-074



TYPICAL CROSS SECTION  
STA 2+515



TYPICAL CROSS SECTION  
STA 2+545



11			
10			
9			
8			
7			
6			
5			
4	ISSUED FOR TENDER	2024-07-22	CIMA+
3	ISSUED FOR REVIEW	2024-07-05	CIMA+
2	ISSUED FOR REVIEW	2024-06-14	CIMA+
1	ISSUED FOR REVIEW	2024-06-04	CIMA+
	PLAN DESCRIPTION/REVISION	DATE	BY

SEAL

CHECKED BY:	CHECKED BY:
DATE	DATE
DRAWN BY:	DATE

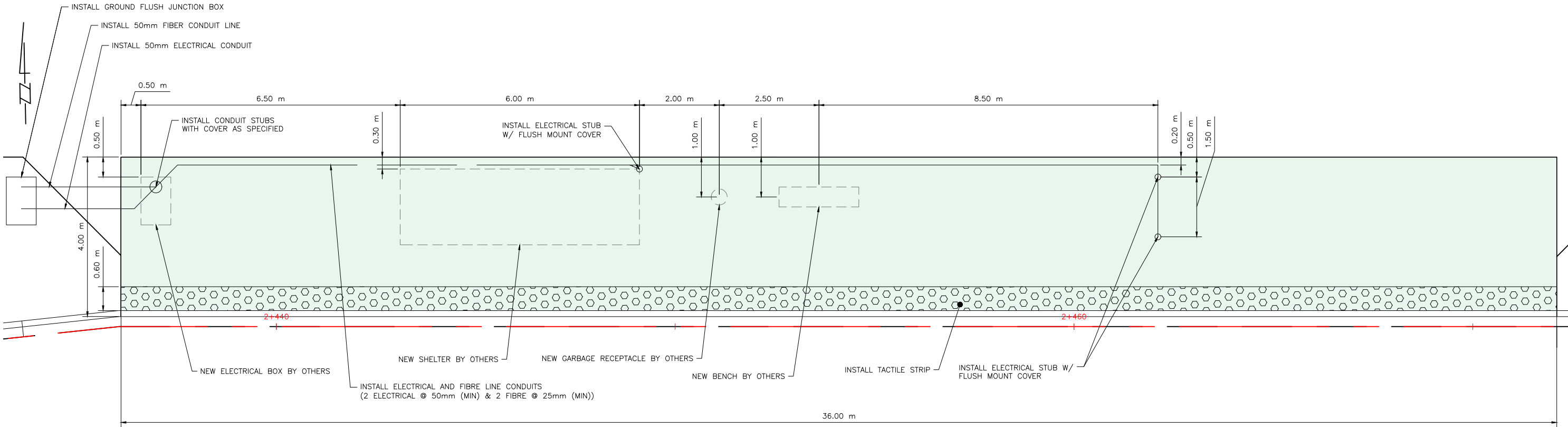


BUS RAPID TRANSIT SYSTEM

STATION 100  
GREEN LINE  
McCORMOND DRIVE & ATTRIDGE DRIVE  
CROSS SECTIONS

ENGINEER	DATE
SCALES : HOR. 1:50 VERT. 1:50	
SHEET NO. 1	PLAN NO. Z0012044-TR-2403

FILE NAME: Z0012044-TR-2400-CONTRACT\_2-STATION\_100.DWG PLOT: July 22, 2024 11:17 AM BY: MADI MUKHANOVI



11			
10			
9			
8			
7			
6			
5			
4	ISSUED FOR TENDER	2024-07-22	CIMA+
3	ISSUED FOR REVIEW	2024-07-05	CIMA+
2	ISSUED FOR REVIEW	2024-06-14	CIMA+
1	ISSUED FOR REVIEW	2024-06-04	CIMA+
	PLAN DESCRIPTION/REVISION	DATE	BY

SEAL

CHECKED BY:	CHECKED BY:
DATE	DATE
DRAWN BY:	DATE

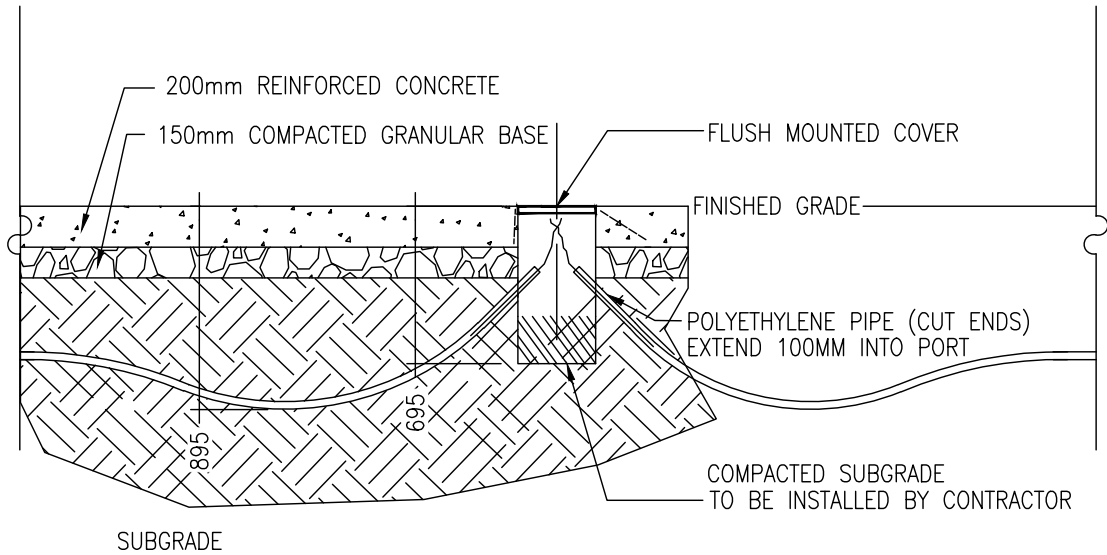


BUS RAPID TRANSIT SYSTEM  
STATION 100  
GREEN LINE  
McCORMOND DRIVE & ATTRIDGE DRIVE  
PLATFORM DETAILS

ENGINEER	
SCALES : HOR. 1:100 VERT. _____	DATE _____
SHEET NO. _____	PLAN NO. Z0012044-TR-2404



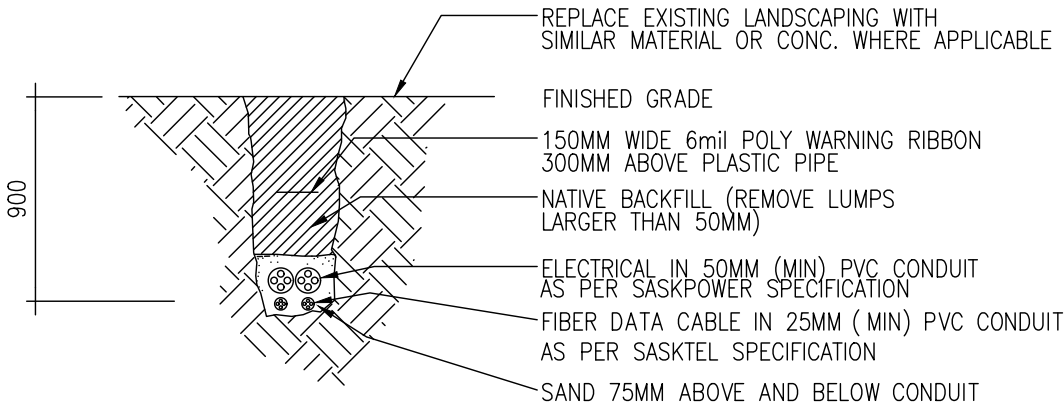
FILE NAME: Z0012044-TR-2500-CONTRACT\_2-DETAILS.DWG PLOT: July 22, 2024 11:19 AM BY: MADI MUKHANOVA



- NOTE:
- 1. EXTEND PULL STRING 300 mm PAST THE END OF THE CONDUIT. PROTECT PULL STRING.
  - 2. INSTALL FLUSH MOUNT COVER TO PROTECT ELECTRICAL
  - 3. A GRADUAL INCREASE IN DEPTH REDUCES THE CHANGE OF KINKING

ELECTRICAL END LOCATIONS

SCALE 1:30



CONDUIT DETAIL

SCALE 1:30

TRACER WIRE TO BE INSTALLED IN ALL CONDUIT.

THE CONTRACTOR IS RESPONSIBLE FOR DETERMINING THE LOCATION AND ELEVATION OF ALL UNDERGROUND UTILITIES.



CIMA+

11				
10				
9				
8				
7				
6				
5				
4				
3	ISSUED FOR TENDER	2024-07-22	CIMA+	
2	ISSUED FOR REVIEW	2024-07-05	CIMA+	
1	ISSUED FOR REVIEW	2024-06-14	CIMA+	
	PLAN DESCRIPTION/REVISION	DATE	BY	SEAL

CHECKED BY:	CHECKED BY:
DATE	DATE
DRAWN BY	DATE



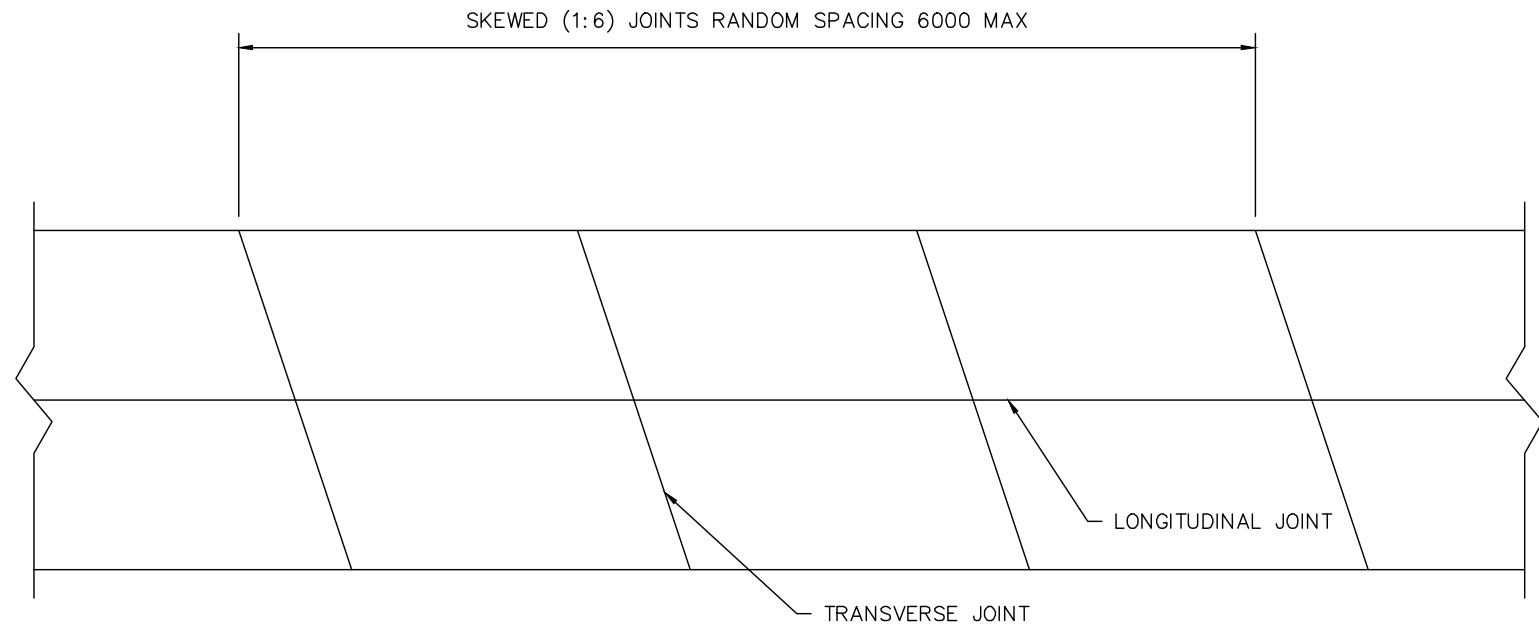
BUS RAPID TRANSIT SYSTEM

STANDARD DETAILS

UNDERGROUND ELECTRICAL CONNECTIONS

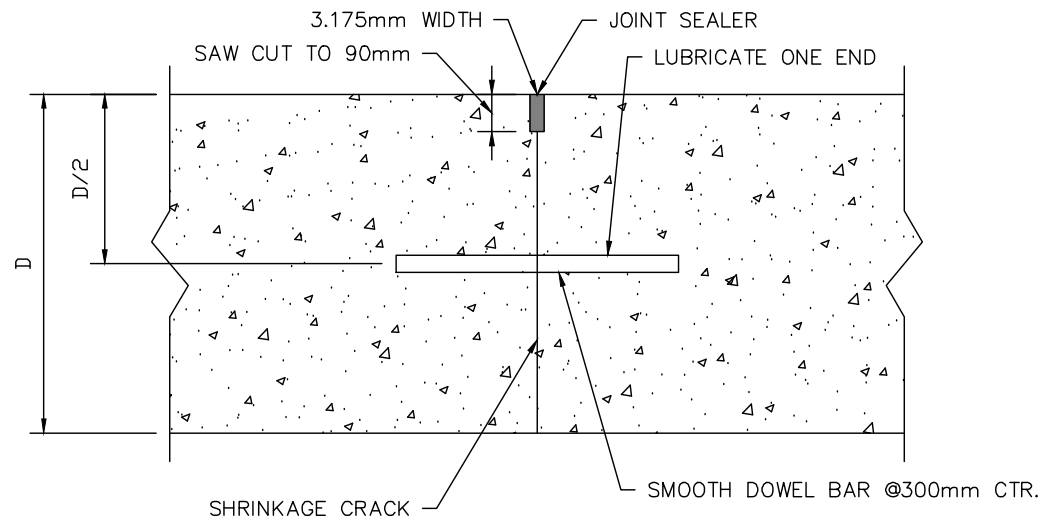
ENGINEER	
SCALES :	
HOR. NTS	DATE
VERT.	
SHEET NO.	PLAN NO.
-	Z0012044-TR-2500

FILE NAME: Z0012044-TR-2500-CONTRACT\_2-DETAILS.DWG PLOT: July 22, 2024 11:20 AM BY: MADI MUKHANOY



- NOTES:
- ALL CONCRETE USED SHALL BE HS OR HSb CEMENT (SULPHATE RESISTANT) AND IN ACCORDANCE WITH CAN/CSA A23.1-04
  - A MINIMUM 56 DAY COMPRESSIVE STRENGTH OF 35MPa AND A MAXIMUM WATER/CEMENT RATIO OF 0.4 IS REQUIRED
  - AIR ENTERTAINMENT OF 4 TO 7% AND CONCRETE MADE WITH 14 TO 20mm CONCRETE AGGREGATE IS REQUIRED
  - CONCRETE PAVEMENT TYPICAL JOINT ARRANGEMENT SHOWN IN MILLIMETERS
  - DOWELS 30 TO 40mm IN DIAMETER
  - EPOXY-COATED SMOOTH BARS
  - 0.6m LONG
  - PLACED IN CENTER OF SLAB
  - RANDOM SPACING BETWEEN 4 TO 6 METERS
  - 300mm OC SPACING
  - NEED JOINTS TOOLED AND/OR CUT AT LEAST 90mm DEEP IN CENTER OF THESE DOWELS (FOR 300mm SLAB)
  - HOT POUR SEALANT AFTER (BY OTHERS)
  - LONGITUDINAL JOINTS ARE DESIGNED WITH TIE BARS TO CONNECT THE SLABS, ALL TRANSVERSE JOINTS ARE TO BE DOWELED
  - TRANSVERSE JOINTS SHALL BE HAND TROWELED AFTER PLACEMENT TO A DEPTH OF OF AT LEAST 25mm AND THEN SAW CUT TO A MINIMUM DEPTH OF 90mm AND NO MORE THAN 18 HOURS AFTER PLACMENT

### CONCRETE PAVEMENT TYPICAL JOINT ARRANGEMENT



### DOWELED TRANSVERSE JOINT



11			
10			
9			
8			
7			
6			
5			
4			
3	ISSUED FOR TENDER	2024-07-22	CIMA+
2	ISSUED FOR REVIEW	2024-07-05	CIMA+
1	ISSUED FOR REVIEW	2024-06-14	CIMA+
	PLAN DESCRIPTION/REVISION	DATE	BY

SEAL

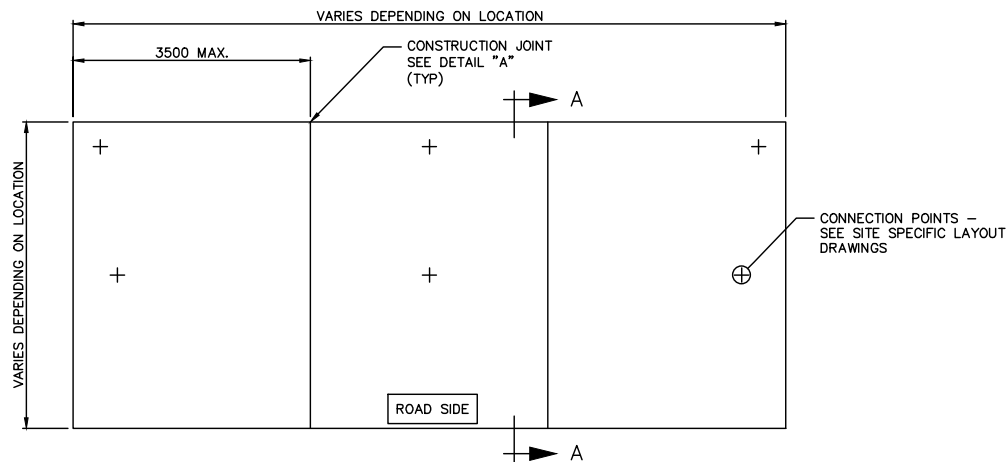
CHECKED BY:	CHECKED BY:
DATE	DATE
DRAWN BY	DATE



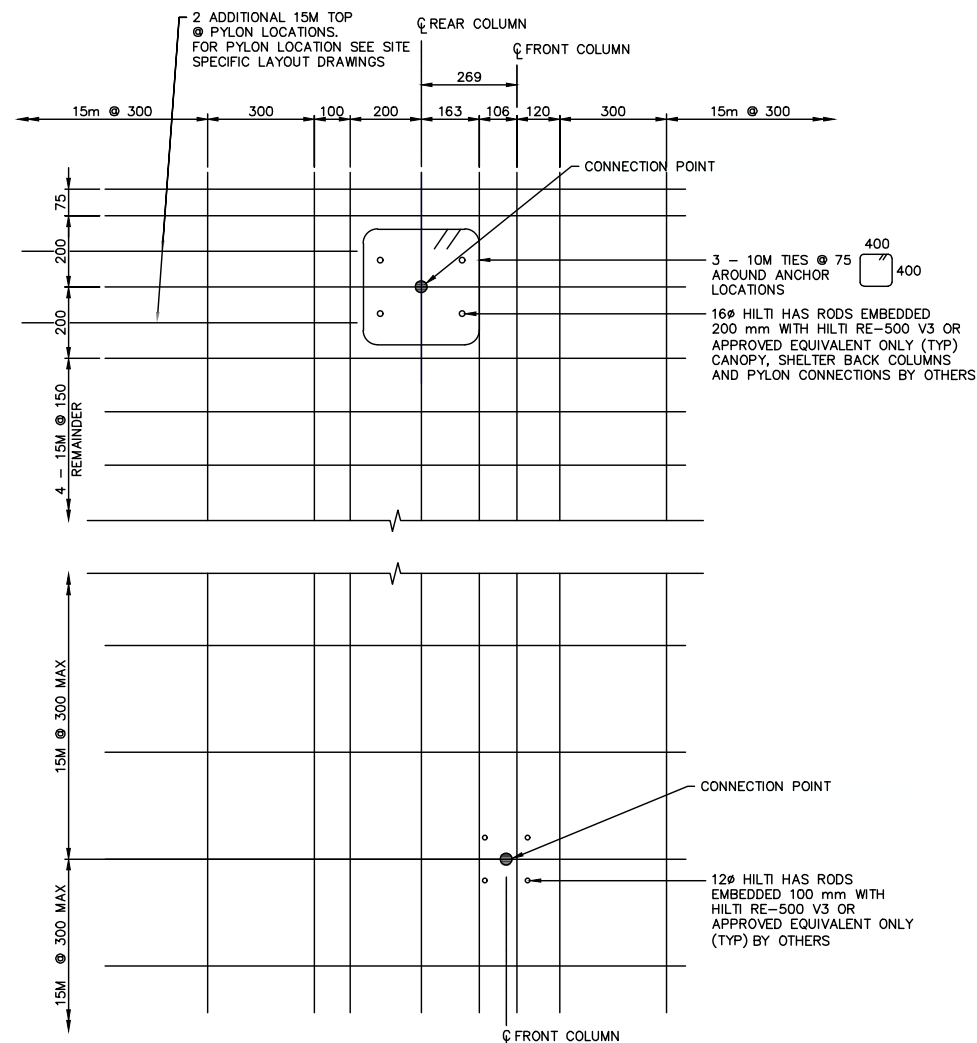
BUS RAPID TRANSIT SYSTEM
STANDARD DETAILS
RIGID PAVEMENT TYPICAL JOINT DETAILS

ENGINEER	
SCALES : HORIZ. VERT.	NTS
SHEET NO.	PLAN NO.
-	Z0012044-TR-2501

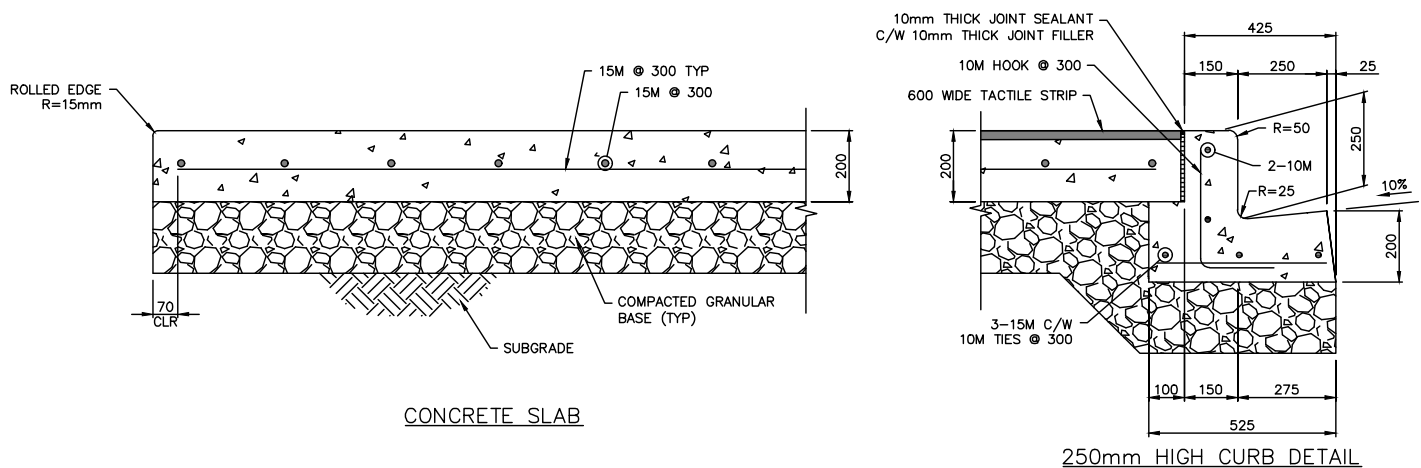
FILE NAME: Z0012044-TR-2500-CONTRACT\_2-DETAILS.DWG PLOT: July 22, 2024 11:20 AM BY: MADI MUKHANDOV



TYPICAL PLATFORM SLAB DETAIL  
SCALE 1:100

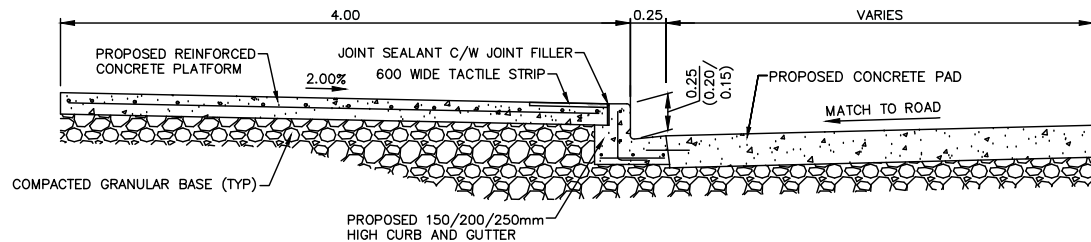


TYPICAL REINFORCING LAYOUT  
SCALE 1:20

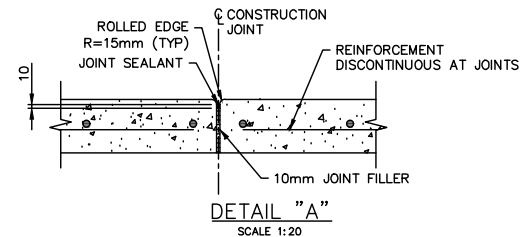


CONCRETE SLAB

250mm HIGH CURB DETAIL



BRT STATION STANDARD PLATFORM CROSS SECTION (4.00m WIDTH @ 0.15m/0.20m/0.25m HEIGHT)  
SCALE 1:50



#### SLAB GENERAL NOTES:

1. CONCRETE SHALL BE EXPOSURE CLASS C-1 IN ACCORDANCE WITH CSA STANDARD A23.1.
2. CONCRETE SHALL HAVE A MINIMUM 28-DAY COMPRESSIVE STRENGTH OF 30 MPa.
3. MINIMUM CONCRETE COVER SHALL BE 60mm UNLESS OTHERWISE NOTED.
4. REINFORCING STEEL SHALL BE IN ACCORDANCE WITH CSA STANDARD G30 18 GRADE 400W.
5. SEE SPECIFICATIONS FOR ADDITIONAL MATERIAL AND FABRICATION REQUIREMENTS.
6. SEE SITE-SPECIFIC LAYOUT DRAWINGS, SHELTER AND CANOPY DETAILS FOR LOCATION OF FUTURE CONNECTION POINTS.
7. CONNECTION POINTS SHALL BE SURVEYED IN PLACE AND REINFORCEMENT ADJACENT TO CONNECTION POINTS SHALL BE CAREFULLY LOCATED RELATIVE TO THESE POINTS AND IN ACCORDANCE WITH THE DETAILS SHOWN.
8. PROVIDE A DIRECT MEANS OF VISUALLY LOCATING EACH CONNECTION POINT AFTER COMPLETION OF THE SLAB, THROUGH PROJECTING A NON-CORROSIVE MARKER THROUGH THE SURFACE AT EACH CONNECTION POINT OR BY ANOTHER APPROVED METHOD. SUBMIT DETAILS OF THE PROPOSED METHOD FOR REVIEW AT LEAST 5 WORKING DAYS PRIOR TO THE FIRST SLAB POUR.
9. LOCATE CONSTRUCTION JOINTS SYMMETRICALLY AND CENTERED BETWEEN SHELTER AND CANOPY SUPPORTS.



**CIMA+**

11			
10			
9			
8			
7			
6			
5			
4			
3	ISSUED FOR TENDER	2024-07-22	CIMA+
2	ISSUED FOR REVIEW	2024-07-05	CIMA+
1	ISSUED FOR REVIEW	2024-06-14	CIMA+
	PLAN DESCRIPTION/REVISION	DATE	BY

SEAL
------

CHECKED BY:	CHECKED BY:
DATE	DATE
DRAWN BY:	DATE



BUS RAPID TRANSIT SYSTEM  
STANDARD DETAILS  
PLATFORM STRUCTURAL DETAILS

ENGINEER	DATE
SCALES : HOR. NTS VERT.	
SHEET NO.	PLAN NO.
-	Z0012044-TR-2502