



## About PETER BALLANTYNE CREE NATION

The Peter Ballantyne Cree Nation (PBCN) has occupied lands in Northeast Saskatchewan since time immemorial. The Peter Ballantyne Cree Nation are called Assin'skowitziniwak which means "people of the rocky area". The Peter Ballantyne Cree Nation consists of 8 communities, including Denare Beach, Deschaumbault Lake, Kinoosao, Pelican Narrows, Prince Albert, Sandy Bay, Southend, and Sturgeon Landing and is spread over 51,000 square kilometers. Peter Ballantyne Cree Nation follows the traditional lifestyle of the Woodland Cree which led to the establishment of several communities along major economic routes including various waterways (<http://www.pbcnhealthservices.org/>). The majority of PBCN members live in the traditional territory of the 8 communities, but there are also many members living in urban centres such as Prince Albert and Saskatoon.

### HIGHLIGHTS AND OPPORTUNITIES

- On February 11, 1889, Commissioner Irvine met with the Montreal Lake and Lac La Ronge First Nations at Molanosa at the north end of Montreal Lake at the outflow of the Montreal River, concluding an adhesion to Treaty Six. It had exactly the same terms as Treaty Six had 13 years prior.
- Peter Ballantyne was appointed as the first Chief, serving in that capacity until 1917.
- PBCN has a wide range of services for its members, including businesses owned completely by the Band and others in partnership.
- Peter Ballantyne Group of Companies (PBGOC) emphasizes the development and maintenance of good relations with strong partners. PBGOC currently participates in over 20 businesses including the Northern Lights Casino and Tim Hortons located in Creighton. (<http://pbgoc.com/>)
- PBCN has 14 elected Councillors - two each from Southend, Sandy Bay, and Deschambault Lake, five from Pelican Narrows, and one each from Denare Beach, Sturgeon Landing, and Prince Albert.

### DEMOGRAPHICS

Total Population: 11,191 persons  
 On Reserve: 5,987 persons/Off Reserve: 5,204 persons  
 Total Reserves/Settlements/Villages: 92,853 acres  
 (Source: Indigenous and Northern Affairs Canada, [https://fnppn.aadnc-aandc.gc.ca/fnp/Main/Search/FNMain.aspx?BAND\\_NUMBER=355&lang=eng](https://fnppn.aadnc-aandc.gc.ca/fnp/Main/Search/FNMain.aspx?BAND_NUMBER=355&lang=eng))

### TRIBAL COUNCIL AFFILIATION

Prince Albert Grand Council (PAGC) Member

### ECONOMICS

#### IN SASKATOON REGION

<b>Land Holdings - (Total)</b>	92,853 ac
Rural Holdings (RM of Corman Park)	160 ac

#### Employment (On Reserve)

Full Time, Part-Time, Seasonal Employee	2,805
---	-------

#### Business Developments:

##### OUTSIDE SASKATOON REGION

###### Wholly Owned:

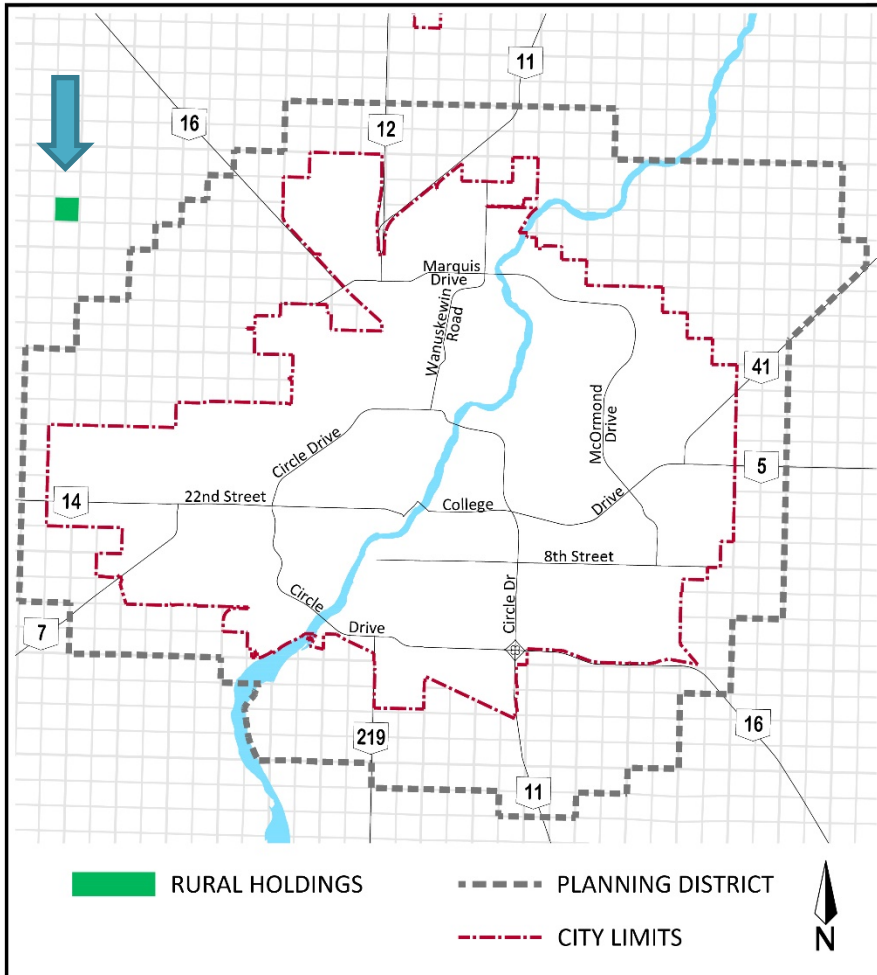
- PBCN Office Complex
- Mee Toos Forest Products Ltd.
- Prince Albert Casino Ventures
- PBCN PA Fuel & Convenience
- PBGOC Field Services Division
- Tim Hortons/PBCN Petro Canada

###### Partnerships:

- Points North Freight Forwarding
- La Ronge Wild Rice Corporation
- Northern Resource Trucking
- First Nations Insurance
- Prince Albert Development Corporation
- Western First Nations Hospitality
- JNE Welding
- Sage Properties

Source: Peter Ballantyne Cree Nation, <http://pbgoc.com/>, 2019.

Peter Ballantyne Cree Nation  
 Land Holdings - City of Saskatoon and Region  
 Approximately 160 acres



## RESERVE INFORMATION

### Location

Peter Ballantyne Cree Nation is comprised of 8 communities including Denare Beach, Deschaumbault Lake, Kinoosao, Pelican Narrows, Prince Albert, Sandy Bay, Southend, and Sturgeon Landing.

### Services

#### Peter Ballantyne Health Services

Treaty 6 includes a 'medicine chest' clause, provided at the request of the people for medical care. This treaty relationship between the Crown and First Nations of Canada remains as the foundation upon which the PBCN Health Transfer Agreement was signed in April 1995 and in all agreements since. ([pbcnhealthservices.org](http://pbcnhealthservices.org)).

A wide range of home, community and primary care services are provided at the central location in Prince Albert and other community facilities.

Services vary by community, for more information on individual communities' services please visit the link below:

<http://www.pbcnhealthservices.org/>

### Education

PBCN Education is the largest First Nation education system in Saskatchewan. It has a total student population of approximately 1800 students.

<http://www.peterballantyne.ca/education.html>

## GOVERNANCE

Chief: Peter A. Beatty  
 Councillors: Myrtle Ballantyne  
 Walter Ballantyne  
 Robert Beatty  
 Wesley Custer  
 Justin Halcrow  
 Weldon McCallum  
 Josephine Michel  
 Darrin Morin  
 Kevin Morin  
 Marvin Morin  
 Harvey Nataweyes  
 Charles Sinclair  
 Timothy Underwood

Election Term: April 11, 2018 to  
 April 10, 2021

## CONTACT INFORMATION

**PETER BALLANTYNE CREE NATION CONTACT INFORMATION**  
 PBCN Central Office  
 Cottage #13 - 2300 10th Ave W.  
 Prince Albert, SK S6V 6Z1  
 P.O. Box 2320 Phone: (306) 953-4400  
 Fax: (306) 953-4420  
<http://pbgoc.com/>

## For more information



City of Saskatoon, Planning and Development Division  
 306-975-2645 [regional.planning@saskatoon.ca](mailto:regional.planning@saskatoon.ca) [www.saskatoon.ca](http://www.saskatoon.ca)  
 Saskatoon Regional Economic Development Authority (SREDA)  
 306-664-0720 [info@sreda.com](mailto:info@sreda.com) [www.sreda.com](http://www.sreda.com)