

CORRIDOR GROWTH

What should 8th Street & 22nd look like in the future?

1. What type of housing do you think would be best for 8th Street or 22nd Street with a rapid transit system in place?
Check all that apply.



D.

LIST OTHER:

Additional Comments:

2. Draw a line to match street names (on the right) with how you would like its future pedestrian environment to look and feel:



Pedestrian Dominant Areas

These are areas where people gather, such as plazas with outdoor seating and very walkable shopping streets.



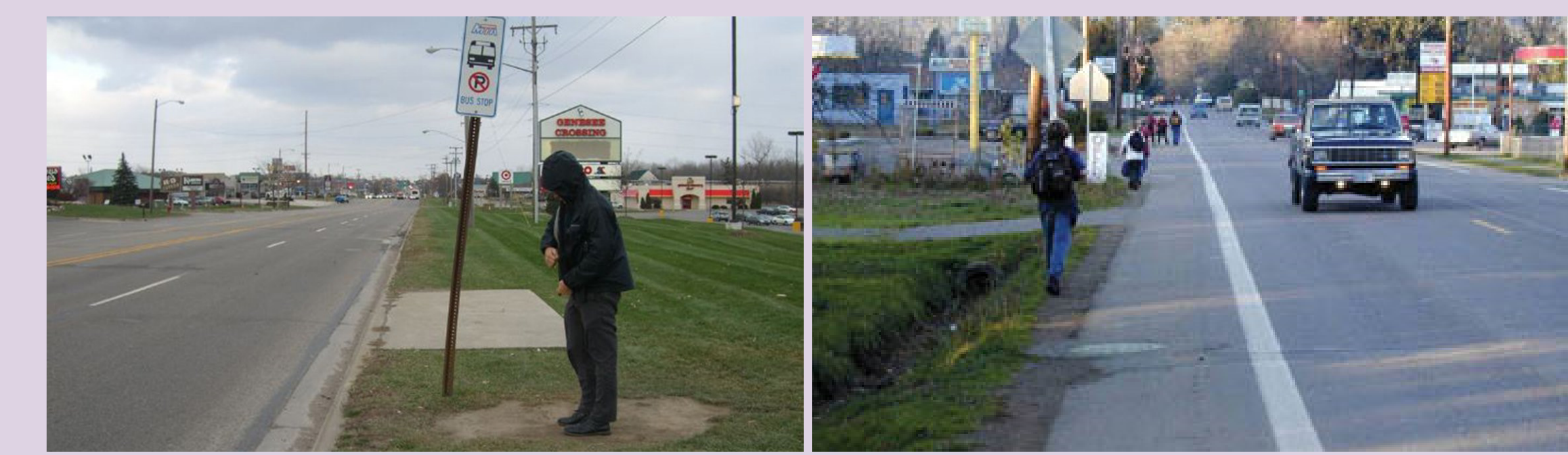
Pedestrian Supportive Areas

These are safe environments for walking, where sidewalks are continuous and buffered from the street, featuring trees or other streetscaping.



Pedestrian Tolerant Areas

These are areas and corridors where walking is technically safe, but land use patterns discourage walking and make it uncomfortable.



Pedestrian Intolerant Areas

These are areas where walking is unsafe and unattractive, such as near freeways, industrial, or undeveloped areas.



8th Street



22nd Street



College Drive

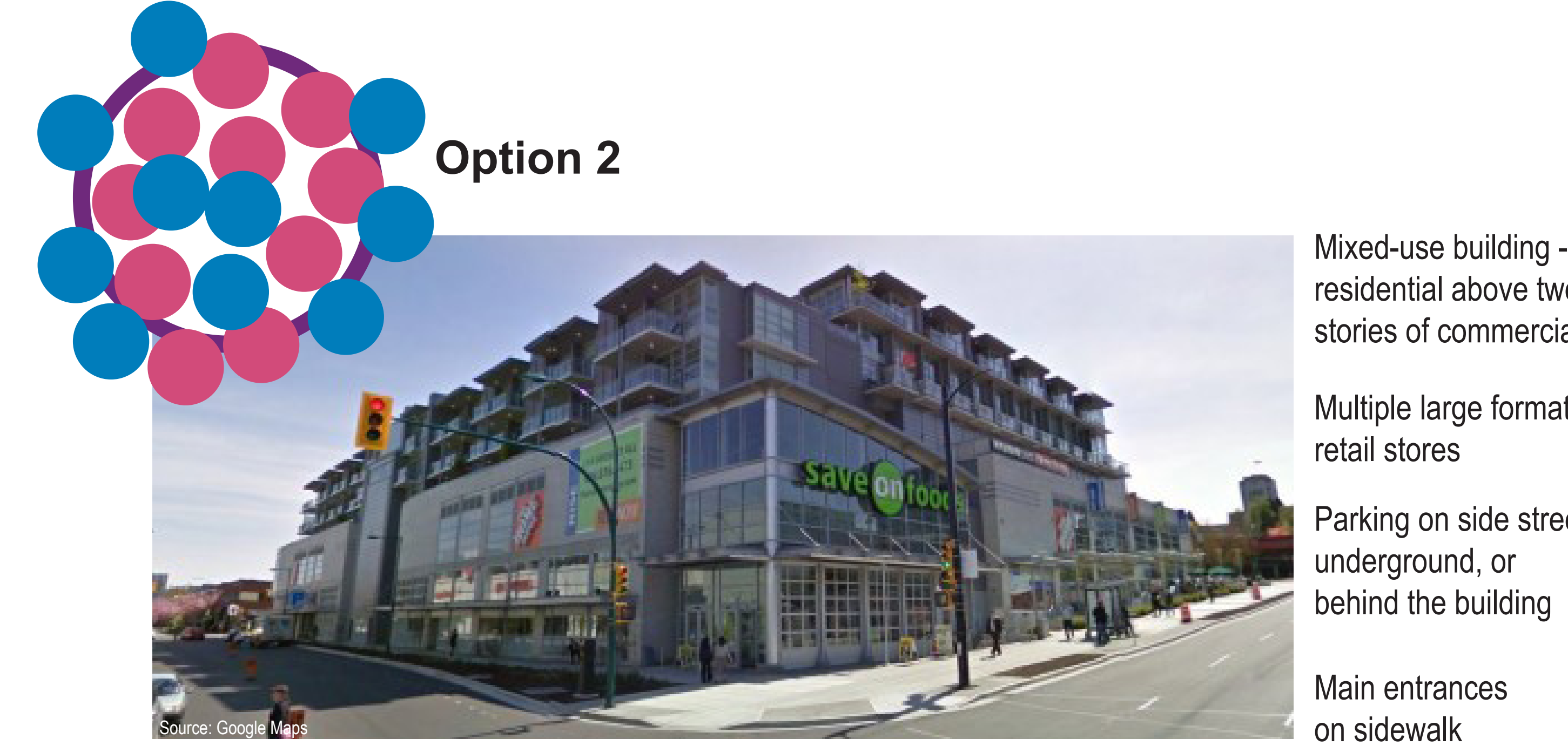
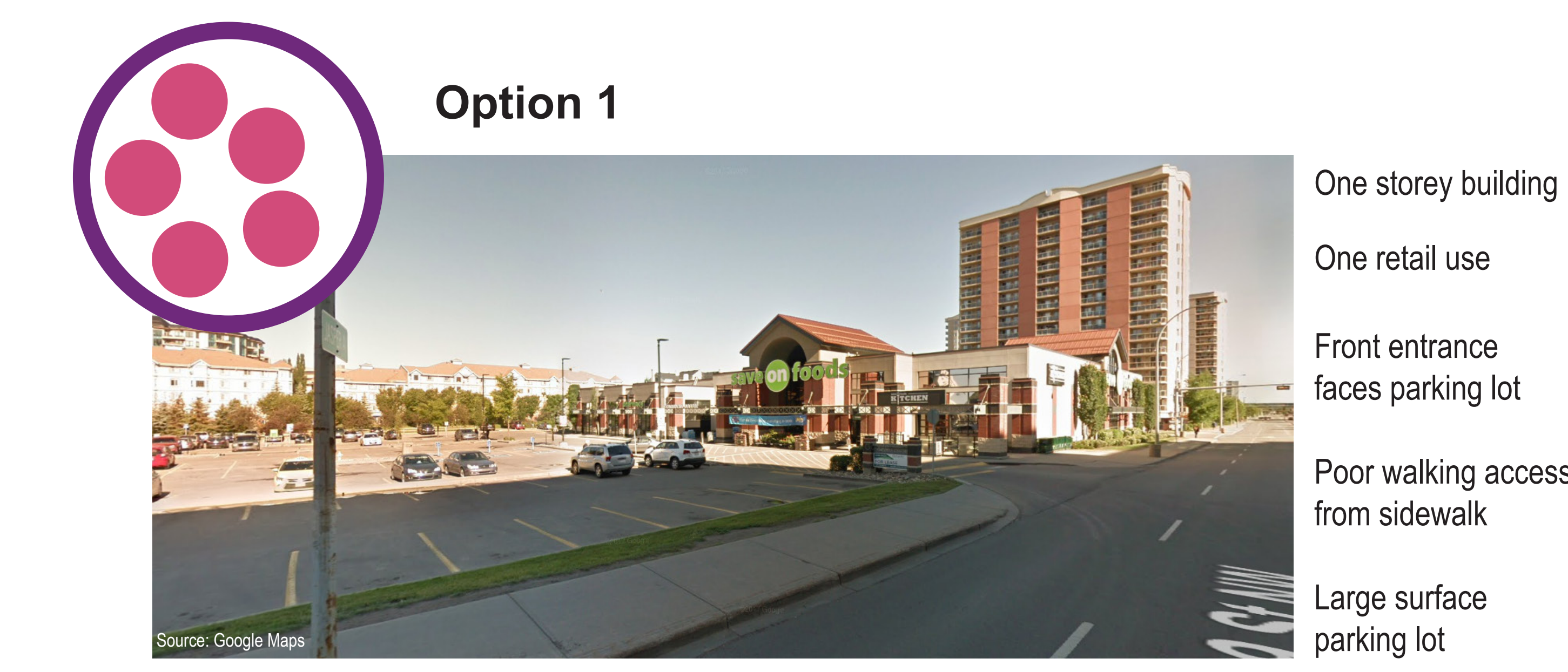


Attridge Drive

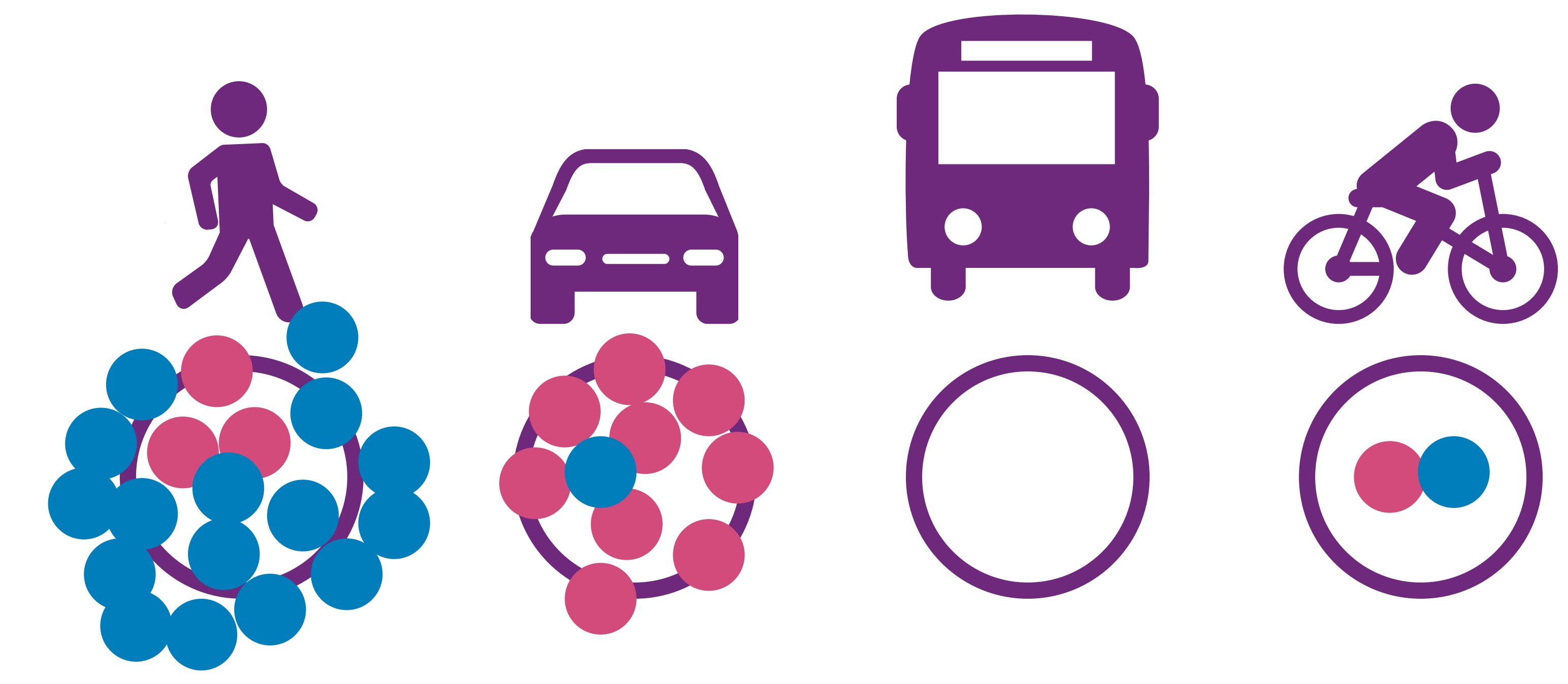
3. The images below are two examples of large format retail.

- Option 1 is typical for Saskatoon—one storey, single use.
- Option 2 is a multi-storey mixed-use building, with the same retail options, underground parking, and residential above.

Which type of development would you prefer to see along 8th Street or 22nd Street?



4. How did you get here today?



5. Would you like to see any of these things along 8th Street or 22nd Street? Check all that apply.

A.

Attractive public spaces that are enjoyable and functional

B.

Greenery and natural elements

C.

Safe and comfortable sidewalks

D.

• More benches

• Add a grocery store

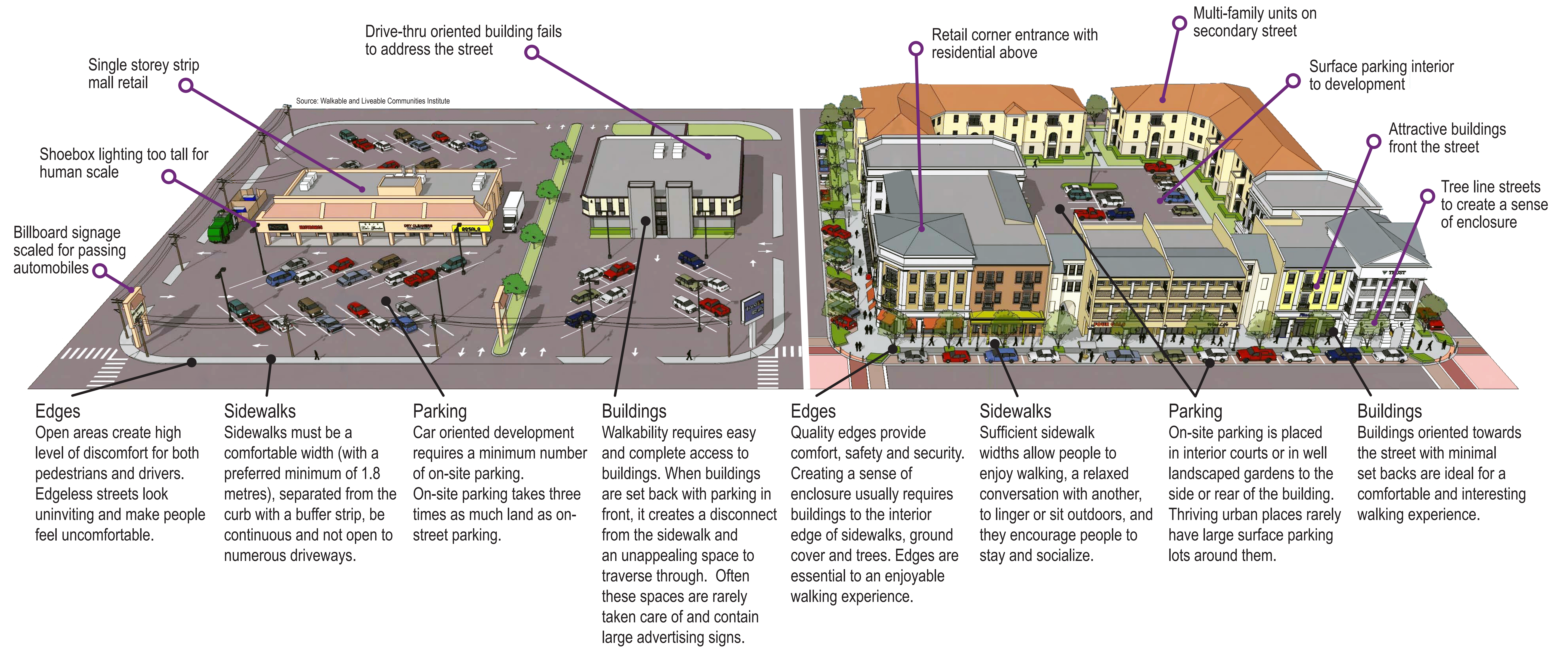
• Remove a lane of traffic for cars, instead it can be for bikes or skate boards.

• More pedestrian crossings everywhere

OTHER

Additional Comments:
• Get rid of the train

Currently, 8th Street and 22nd Street are designed almost exclusively for vehicles. Below is a diagram that compares typical automobile style development with compact walkable development.



6. Considering the diagram above, rate from 1-5 how important the following changes are to you, in order to create a more walkable, transit-friendly, and residential-friendly street.

I would just like to feel safe!

