

# imagine idylwyld

## A New Vision for Idylwyld Drive

### Phase Three Background Information

#### Project Scope:

The Imagine Idylwyld project is looking at potential improvements for Idylwyld Drive between 20<sup>th</sup> Street in the south to 25<sup>th</sup> Street in the north, and includes Auditorium Avenue. The railway crossing at 25th is not part of this project. If you have any questions or comments relating to areas outside this project area please address them to [imagineidylwyld@saskatoon.ca](mailto:imagineidylwyld@saskatoon.ca).

#### Phase 3 - Design Options:

We are currently in the third phase of the project, where alternative design options have been developed based on the community input we received last November. Each scenario has been tested to ensure traffic on Idylwyld Drive will continue to flow as the City grows to +400,000 population.

#### Key components common to all options include:

- Two continuous driving lanes are provided in each direction from Senator Sid Buckwold Bridge through to 25<sup>th</sup> Street.
- Left turn bays have been introduced for each left turning movement. This means that people going through the corridor don't have to wait behind someone turning left.
- Providing left turn bays improves traffic signal timing and coordination and keeps traffic flowing. For example, drivers making opposing left turns can do so at the same time, rather than each movement having to wait for its own green light.
- Driving lanes are lined up through intersections, and lanes don't start or end unexpectedly.
- Right turn islands are removed. In most instances, drivers turning right share the lane with through drivers, just like other downtown streets.
- The above changes allow for crosswalk distances and crossing wait times to be reduced.
- Sidewalks are widened to accommodate everyone, including wheelchairs and strollers.
- Key cycling connections are improved.

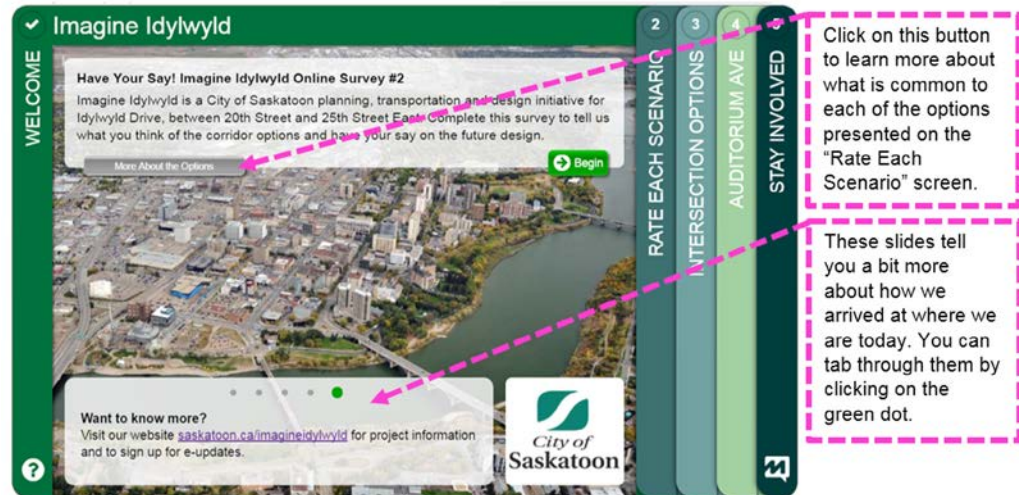
Though many changes are common to both options, some details have yet to be determined. The options presented in the survey describe different scenarios and we would like your input on the trade-offs.

At this time, we are focusing on the roadway itself. Once you've helped us determine which of the options best meet your daily needs, we will work on more details around streetscaping and land use planning.

# imagine idylwyld online survey #2 – how to complete the survey

## WELCOME SCREEN

The purpose of this screen is to provide you with a bit of project information.

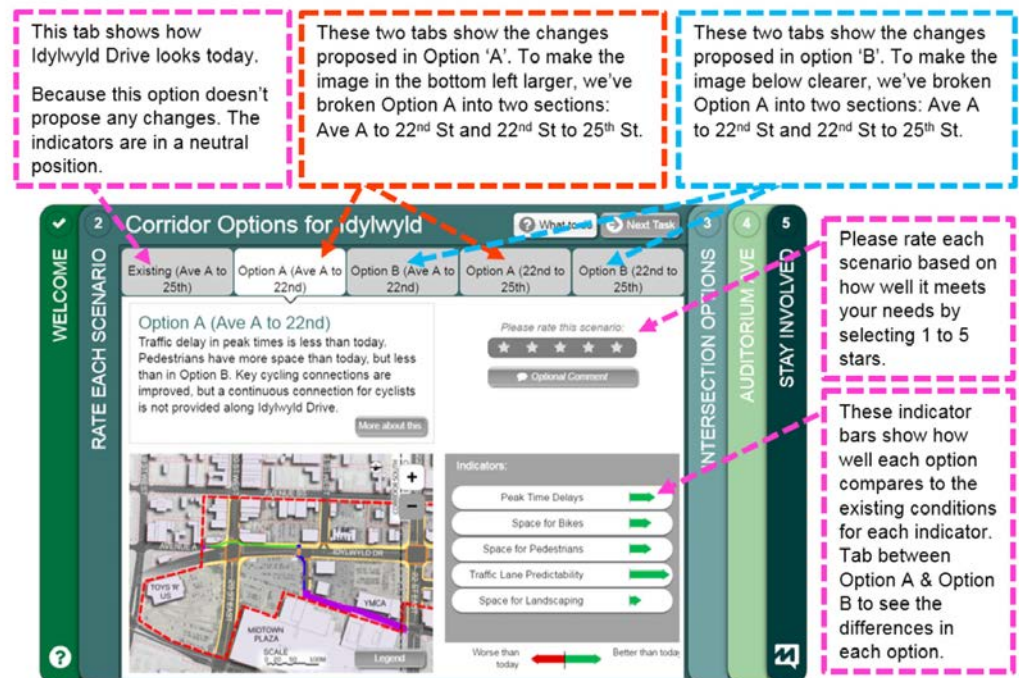


## RATE EACH SCENARIO SCREEN – Corridor Options for Idylwyld Dr.

The purpose of this screen is for you to tell us which of the options you like best.

For each of the five scenarios, read the description and review the indicators on the sidebar and then rate it by clicking on the stars. You can give more than one scenario the same grade, if you like them equally.

Note that you can zoom in to see more details, and there is a button to bring up the legend.



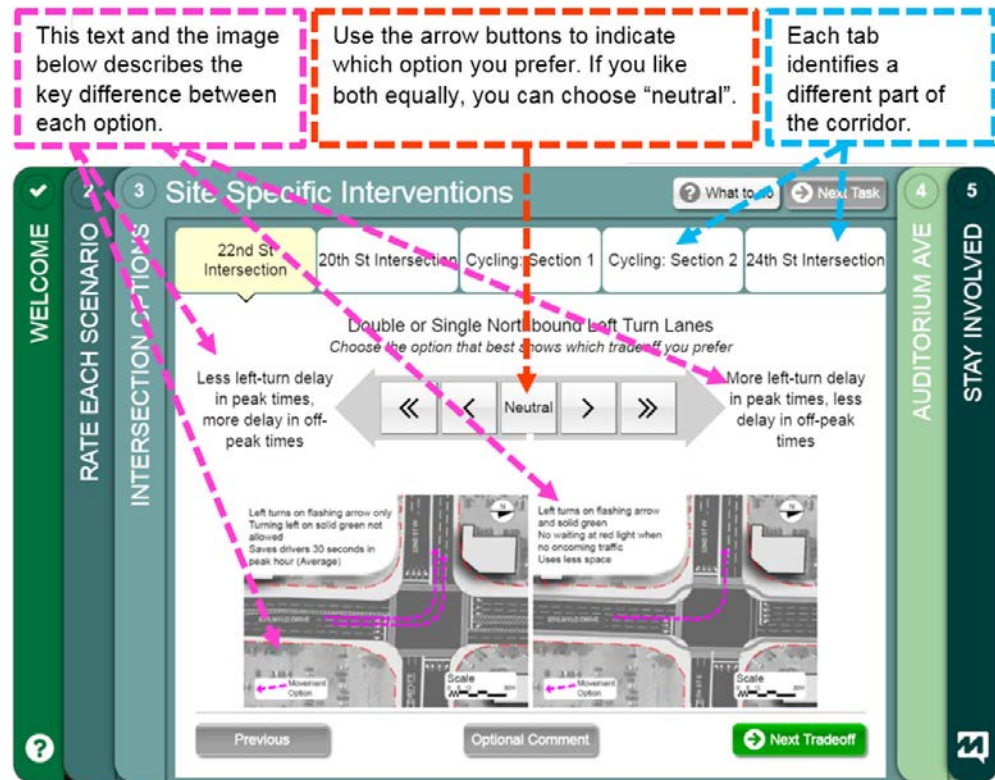
# imagine idylwyld online survey #2 – how to complete the survey

## INTERSECTION OPTIONS SCREEN – Site Specific Interventions

The purpose of this screen is to illustrate the key differences between Option A and Option B by describing the trade-offs between each.

You can rate your preference using the arrow buttons.

Two arrows means a strong preference, one arrow means a slight preference, or you can let us know that you don't have a preference by clicking on "Neutral".



## AUDITORIUM AVE SCREEN

The purpose of this screen is to provide an overview of possible changes we could make to this street to make it function better for all users.

Let us know how you like each option by rating them on a scale of 1 to 5 stars.

