

CHILDREN'S WORKSHOP

WHERE: Saint Marguerite School, Saskatoon, SK
WHEN: Apr. 14, 2011

WORKSHOP FRAMEWORK:

The purpose of the workshop was to gain a sense of the interests and activities of the park user groups. The workshop began with introductions and a presentation of images of play space elements to spark discussion and the children's interest.

Following the slide show, the students worked in small groups to design their own play space with plasticine. Each group had an opportunity to present their ideas to the larger group and at the end of the presentations, each child voted on their favourite design elements.

WORKSHOP PARTICIPANTS:
Grade 3 class + Grade 6 class



CHILDREN'S WORKSHOP

KEY FINDINGS: THE PLAY ENVIROMENT SHOULD PROVIDE EXPERIENCES THAT ARE UNIQUE TO THE OUTDOORS

THE PLAY ENVIROMENT SHOULD PROVIDE OPPORTUNITIES FOR ALL AGE GROUPS TO EXPERIENCE SAFE RISK TAKING

THE PLAY ENVIROMENT SHOULD BE AN INTEGRATED PLAY EXPERIENCE FOR ALL AGE GROUPS AND USERS

○ Features that enhance the clarity and identity of Kinsmen Park.



○ Spaces for creativity and social interaction.

○ Natural elements and experiences unique to the outdoors.



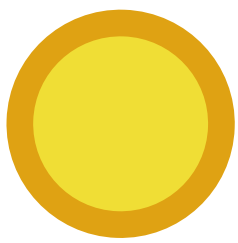
○ Play elements are integrated with the overall site.

○ Active movement or manipulation of materials.

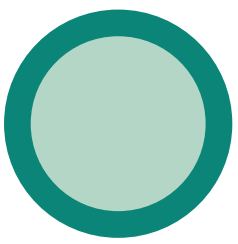


○ Elements that provide challenge and emphasize physical motion.

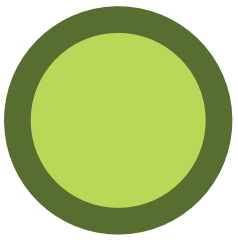
TYPES OF PLAY



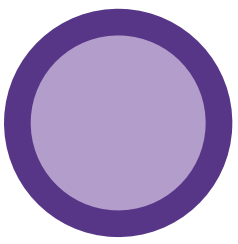
Art Based
art and crafts
tables
covered spaces



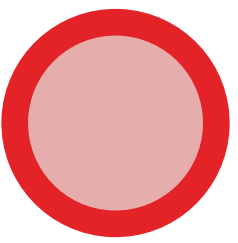
Fantasy
dramatic and symbolic play
water, sand, vegetation
play 'props'



Nature
water, stone, vegetation
'wild' play



Social
gathering spaces for
small to large groups



Active
physical play
large, open spaces

Optimal Adjacencies



PLAY AREA ZONES



- 1 RIDES
- 2 NATURAL PLAY
- 3 WATER PLAY
- 4 AGE 0-5 PLAY
- 5 YOUTH PLAY
- 6 SKATE PATH IN WINTER
- 7 PLAZA
- 8 SOCIAL NODES
- 9 GATEWAYS AND IDENTITY

The play area will provide a mix of many different play types. The play area concept is intended to provide an integrated play experience, combining opportunities for creative play, equipment-based play and rides-based play.

1 RIDES



Miniature Train



Miniature Train



Carousel



Family Swinger



Ferris Wheel

2 NATURAL PLAY



The nature-based play area is set amongst and existing stand of trees for children to freely explore and experience open-ended play in a natural setting.

3 WATER PLAY



The water play area is intended to engage children in active and creative play with moving water. Fountains, channels, hand-pumps, troughs, gates and valves, sprayers, and jets provide children with a variety of opportunities to manipulate and play with water.

PLAY AREA ZONES

4 AGE 0-5 PLAY



This portion of the play area is designed to support the cognitive and physical development of children aged 0-5. There will be plenty of opportunities to explore and engage with the world at a smaller scale.

5 YOUTH PLAY



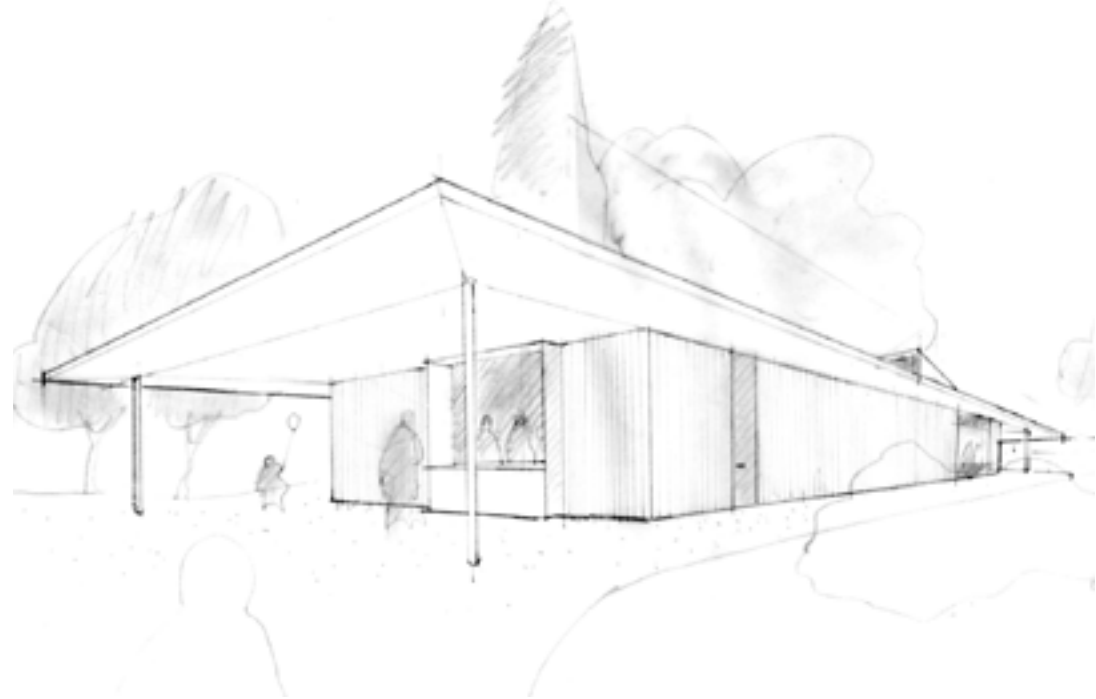
This part of the play area has features that will provide challenge and social opportunities targeted to older children and teenagers. At the same time, all children are welcome to play in this area.

6 SKATE PATH IN WINTER



A portion of the paths in the play area can be flooded and frozen in the winter to create a skate path loop. This provides a different experience from skating on a rink.

7 PLAZA



The plaza serves as the arrival node of the play area.

8 SOCIAL NODES



These are spaces within the play area where people are invited to rest and socialize. They typically include places to sit, a comfortable microclimate and good vantage points to view the nearby activities and enjoy the surroundings.

9 GATEWAYS AND IDENTITY



Unique elements will be integrated within the play area to give it a strong sense of identity. These features will contribute to making the play area memorable, and they will serve as gateways to give visitors a sense of arrival.