



# Eastview Neighborhood

Collection Location Review  
February 12, 2025



# Agenda

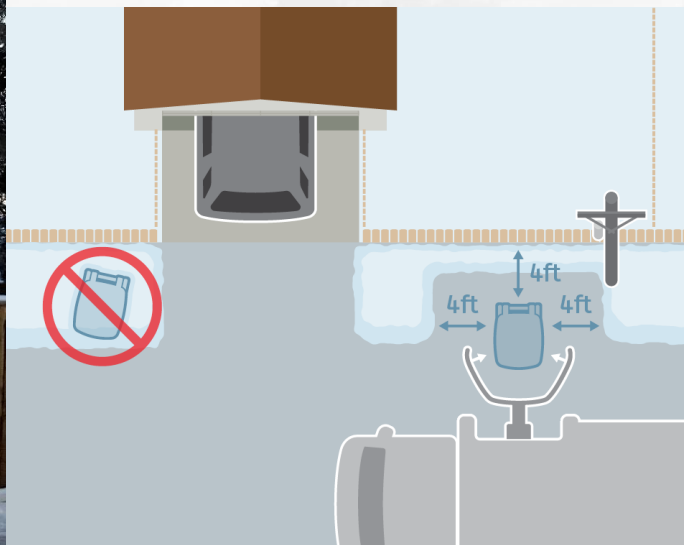
- Background
- Collection Considerations
- Eastview Neighbourhood Assessment
- Next Steps
- Questions and Answers



# Background

- Solid Waste Management Master Plan 2000-2020
- Transition to individual roll-out carts
- In September 2024, City Council directed administration to investigate the possibility of moving the primary waste collection location for the Eastview neighborhood from the back lane to the front street.

# Back lane



# Back lane Collections

Collection Location	Advantages	Disadvantages
Back lane collections	<ul style="list-style-type: none"><li>• Existing collection location (no changes required).</li><li>• Reduced visibility of waste carts as they're hidden in the back lane.</li><li>• Avoid parking restrictions or space constraints in front street.</li><li>• Snow storage available on the front street.</li></ul>	<ul style="list-style-type: none"><li>• Lower efficiency due to narrow lane width and obstructions (i.e. low power lines and trees).</li><li>• Potential for residential property damage (i.e. garages, fences) with narrow lane widths and tight turns.</li><li>• Rear lane degradation resulting in an increase of maintenance costs.</li><li>• Higher rates of litter, illegal dumping and scavenging due to carts left out.</li><li>• Cart placement is difficult due to slopes and shoulders, condition of roads.</li><li>• Snow and ice accumulation results in difficulty for collections trucks navigating and cart placement.</li></ul>

# Collection Truck Details

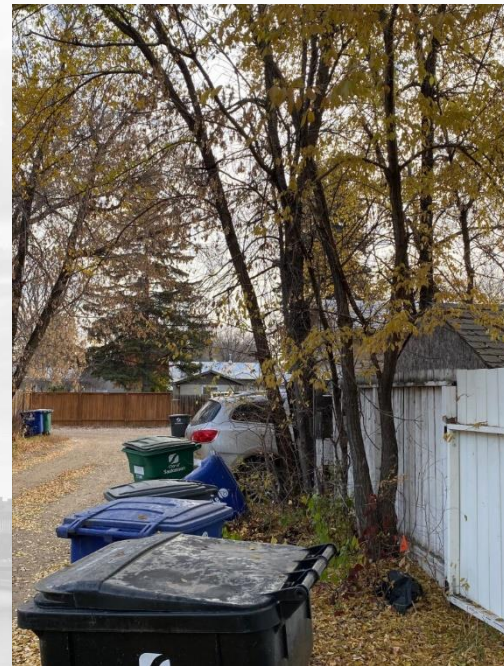
- Automated sideloader
- Maximum capacity (full):  
29,000 kg



# Bylaw Issues

- Environmental Protection Officers (EPO's) complete education and enforcement initiatives per the Waste Bylaw, 2022 (Bylaw No. 9844)
- Bylaw complaints can be reported by calling the 24hr. Customer Care Centre
- EPO's respond to carts left out, illegal dumping, scavenging issues in the back lane

Neighbourhood Blitz Summary 2017			
Neighbourhood	Education Notices delivered	Warning Notices Delivered	Notices of Violation Issued + Eligible Notices of Violation
Eastview (2017)	409	121	12



# Front street



# Front Street Collections

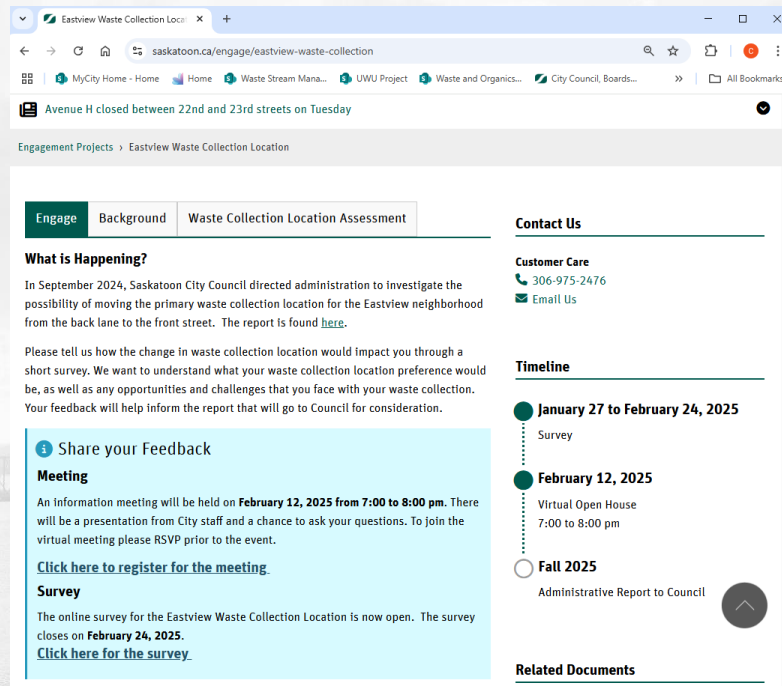
Collection Location	Advantages	Disadvantages
Front street collections	<ul style="list-style-type: none"><li>• More efficient collection for garbage collection.</li><li>• Lower potential for safety incidents i.e. overhead lines and trees.</li><li>• Lower potential for property damage claims.</li><li>• Fit for collection in the winter.</li><li>• Wider and more even road conditions for cart placement.</li><li>• Less cart damages for trucks being able to pick up (more clearance and set out).</li><li>• Mobility of cart is typically easier from a driveway, front of home.</li><li>• Less bylaw infractions (scavenging, carts left out).</li></ul>	<ul style="list-style-type: none"><li>• Cart placement issues due to on-street parking on collection day.</li><li>• Vehicle traffic on major roads.</li><li>• Carts more visible in front of the house, less options to hide the cart.</li></ul>

# Eastview Neighborhood Assessment

Impact	Descriptor	Back lane	Front street
Permanent Obstructions	Trees, property, overhead cable lines/wires	Obstructions observed (low)	Obstructions observed (low)
Backing Up	Areas where the collection truck would need to back up	Backing up required (low)	Not required
Road Conditions	Condition of roads, paved versus gravel	Older gravel surfaces	Up to current standard (paved)
Width of Road	Narrow width	5m or less (wide)	Greater width
Parking	Amount of parking locations	Some detached garages, access in the back	On-street parking
Slope (incline) of Road	Visible slopes or shoulders	Visible slopes exist	No visible slopes
Vehicle Traffic	Vehicle traffic in lane, local or minor, arterial road	Lane collector	Minor collector
Snow & Ice	Suitable for collection in the winter	Potential drifting near parks, not services	Low potential for drifting, windrows on sides
Driver Visibility	Access to and from the road (good visibility)	Low visibility, no lighting	Good visibility
Bylaw Issues	Carts left out (i.e. illegal dumping, scavenging) and potential for scavenging	High potential for carts left out	Lower potential

# Next Steps

- Operational review (neighbourhood, safety, financial assessment)
- Collection location survey closes February 24<sup>th</sup>
  - [saskatoon.ca/eastviewcollection](https://saskatoon.ca/eastviewcollection)
- Report to Council (Fall 2025)



The screenshot shows a web browser window with the URL [saskatoon.ca/engage/eastview-waste-collection](https://saskatoon.ca/engage/eastview-waste-collection). The page has a navigation bar with links to 'MyCity Home', 'Home', 'Waste Stream Mana...', 'UWU Project', 'Waste and Organics...', 'City Council, Boards...', and 'All Bookmarks'. Below the navigation bar, there is a headline 'Avenue H closed between 22nd and 23rd streets on Tuesday' and a breadcrumb trail 'Engagement Projects > Eastview Waste Collection Location'. The main content area has three tabs: 'Engage' (selected), 'Background', and 'Waste Collection Location Assessment'. Under the 'Engage' tab, there is a section titled 'What is Happening?' which states that in September 2024, the City Council directed administration to investigate moving the primary waste collection location for the Eastview neighborhood. It mentions a report found [here](#). Below this, it asks for feedback through a short survey and mentions a virtual meeting on February 12, 2025, and a survey closing on February 24, 2025. There are links to 'Share your Feedback', 'Meeting', and 'Survey'. The 'Meeting' section provides details about the virtual meeting on February 12, 2025, from 7:00 to 8:00 pm, and includes a link to register. The 'Survey' section states that the online survey is now open and closes on February 24, 2025, with a link to participate. On the right side of the page, there is a 'Contact Us' section with 'Customer Care' information (phone number 306-975-2476 and an email link) and a 'Timeline' section. The timeline includes three events: 'January 27 to February 24, 2025' (Survey), 'February 12, 2025' (Virtual Open House, 7:00 to 8:00 pm), and 'Fall 2025' (Administrative Report to Council). At the bottom right, there is a 'Related Documents' section and a 'City of Saskatoon' logo.

# Questions

You are welcome to provide your comments and questions by email, telephone or mail using the contact information below:

Customer Care

306-975-2476

[waste@saskatoon.ca](mailto:waste@saskatoon.ca)

[saskatoon.ca/eastviewcollection](https://saskatoon.ca/eastviewcollection)



