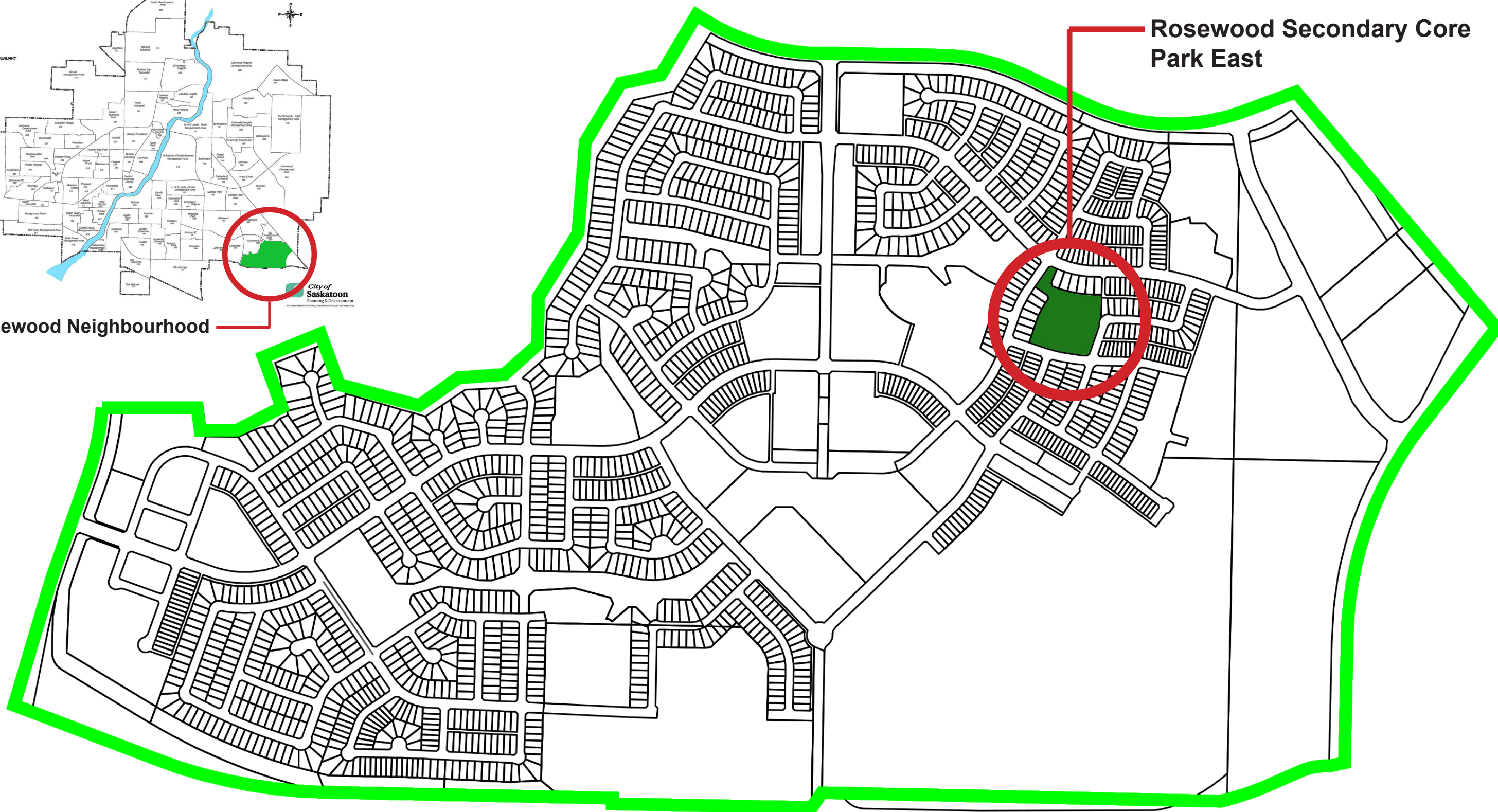


Rosewood Neighbourhood



Rosewood Secondary Core  
Park East



Parks Division: Community Services Department  
1101 Avenue P North  
Saskatoon SK S7L 7K6

Note: This is a conceptual design only; it illustrates the design intent for the park, addressing the program elements identified by the community. During the next stages of the process (detail design, tender and construction) minor changes may occur to the plan as a result of budgets, material availability or site conditions. Only changes affecting the program elements will be communicated to the public.

Rosewood Secondary Core Park East  
Proposed Conceptual Design: May 5th, 2021  
**Location Plan**



Pedestrian linkage to  
Struthers Park



## Design Program

The design program calls for a passive recreation park; one that is open to all community residents, and includes specific components for adult use:

- Open green spaces
- Adult fitness equipment (adult use)
- Multi-use field
- Cross country ski trails
- Central gathering area
- Trees/shrubs
- Walking paths
- Meditation area (adult use)
- Yoga space (adult use)
- Lighting

Please note, program components intended for adult use does not exclude other users from the park or from using those specific components. In addition, play equipment and components geared specifically for children are available in Struthers Park, along Meadows Boulevard.



Parks Division: Community Services Department  
1101 Avenue P North  
Saskatoon SK S7L 7K6

Note: This is a conceptual design only; it illustrates the design intent for the park, addressing the program elements identified by the community. During the next stages of the process (detail design, tender and construction) minor changes may occur to the plan as a result of budgets, material availability or site conditions. Only changes affecting the program elements will be communicated to the public.

Rosewood Secondary Core Park East  
Proposed Conceptual Design: May 5th, 2021  
**Design Program**





The “open play area” is an unallocated space providing the residents the opportunity to use it as they see fit (unallocated means that it is not a programmed sports facility available for booking).

This open space is elevated slightly above the pathway and framed with plant material, creating an “outdoor room”.



Parks Division: Community Services Department  
1101 Avenue P North  
Saskatoon SK S7L 7K6

Note: This is a conceptual design only; it illustrates the design intent for the park, addressing the program elements identified by the community. During the next stages of the process (detail design, tender and construction) minor changes may occur to the plan as a result of budgets, material availability or site conditions. Only changes affecting the program elements will be communicated to the public.

## Rosewood Secondary Core Park East Proposed Conceptual Design: May 5th, 2021 **Open Play Area**





Unit paver labyrinth



Picnic area (picnic table adjacent to open space)



The design includes adult fitness equipment, incorporating upper body and core strengthening stations (dips, stretching, assisted squats, chin/pull ups, incline sit ups, incline leg Raises, assisted pull ups, assisted push ups, leg/knee raises, parallel pull ups).



2.4m asphalt pathway with pathway lighting



Parks Division: Community Services Department  
1101 Avenue P North  
Saskatoon SK S7L 7K6

Note: This is a conceptual design only; it illustrates the design intent for the park, addressing the program elements identified by the community. During the next stages of the process (detail design, tender and construction) minor changes may occur to the plan as a result of budgets, material availability or site conditions. Only changes affecting the program elements will be communicated to the public.

## Rosewood Secondary Core Park East Proposed Conceptual Design: May 5th, 2021 **Park Components**

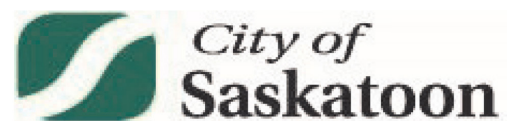




The planting plan is designed to define spaces within the park; guide pedestrians through the park; and provide winter colour throughout the year.

In order to maintain clear visibility for pedestrians, plant material adjacent to the pathway is limited to low shrubs and high branching deciduous trees.

While coniferous material limits vision into park, they also provide welcome colour in the winter. In order to balance these issues, coniferous material will be set back from the pathways. They will define the boundary of the park and separate the park from the adjacent street.



Parks Division: Community Services Department  
1101 Avenue P North  
Saskatoon SK S7L 7K6

Note: This is a conceptual design only; it illustrates the design intent for the park, addressing the program elements identified by the community. During the next stages of the process (detail design, tender and construction) minor changes may occur to the plan as a result of budgets, material availability or site conditions. Only changes affecting the program elements will be communicated to the public.

## Rosewood Secondary Core Park East Proposed Conceptual Design: May 5th, 2021 **Plant Material**





The park is designed to accommodate a cross country ski trail (i.e. a continuous 2.4m wide space in order to set the track). The design includes two loops; an outside loop of 400m, and an inside loop of 200m.

Please note, if the community wants a ski trail in the park, it will have to make arrangements with Parks to set and maintain the track (i.e. funded by the community).



Parks Division: Community Services Department  
1101 Avenue P North  
Saskatoon SK S7L 7K6

Note: This is a conceptual design only; it illustrates the design intent for the park, addressing the program elements identified by the community. During the next stages of the process (detail design, tender and construction) minor changes may occur to the plan as a result of budgets, material availability or site conditions. Only changes affecting the program elements will be communicated to the public.

## Rosewood Secondary Core Park East Proposed Conceptual Design: May 5th, 2021 **Cross Country Ski Trail**





Henry Kelsey Park: 33rd Street and Valens Drive, West



Henry Kelsey Park: 33rd Street and Valens Drive, West

The design incorporates a shallow channel, separating the “Open Play Area” from the residential properties to the north and west. This channel is approximately 1.75m deep at its lowest point. It will create visual variety within the park and it integrates with the stormwater requirements of the neighbourhood (see “Temporary Stormwater Storage” included in this presentation). This land form and stormwater feature has been used in at least one other city park; Henry Kelsey Park (33rd Street and Valens Drive, West), built in 1995.



Henry Kelsey Park: 33rd Street and Valens Drive, West

Note: This is a conceptual design only; it illustrates the design intent for the park, addressing the program elements identified by the community. During the next stages of the process (detail design, tender and construction) minor changes may occur to the plan as a result of budgets, material availability or site conditions. Only changes affecting the program elements will be communicated to the public.

Rosewood Secondary Core Park East  
Proposed Conceptual Design: May 5th, 2021  
**Land Form**





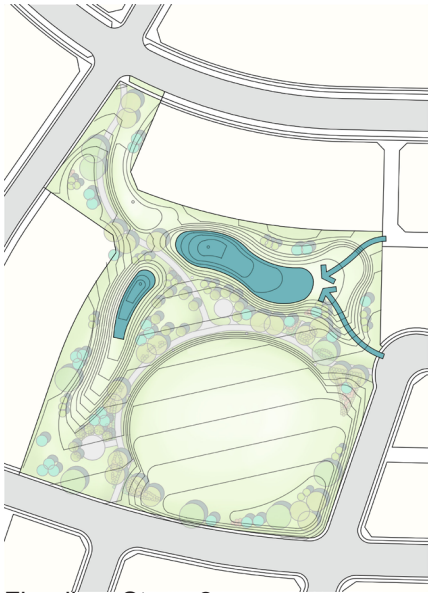
Henry Kelsey Park: 33rd Street and Valens Drive, West



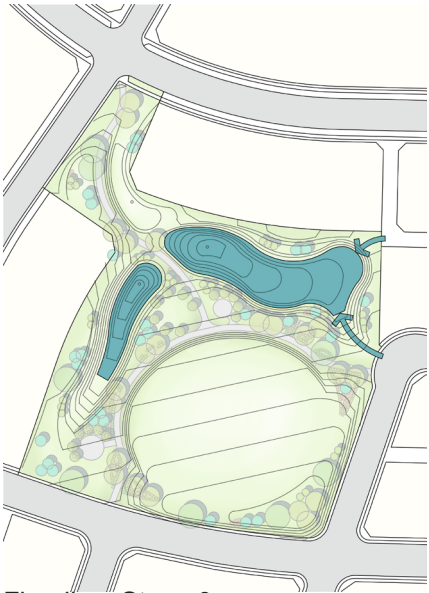
Henry Kelsey Park: 33rd Street and Valens Drive, West



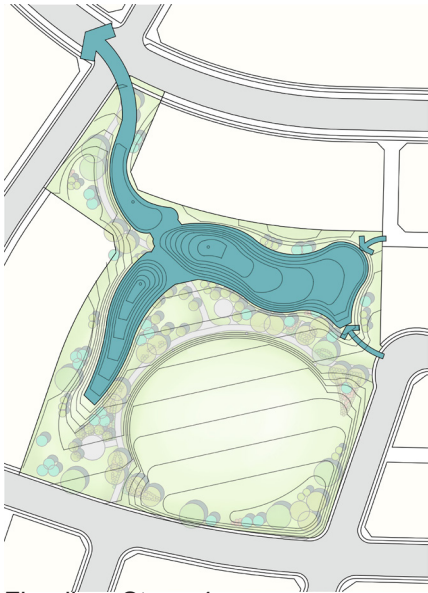
Flooding: Stage 1



Flooding: Stage 2

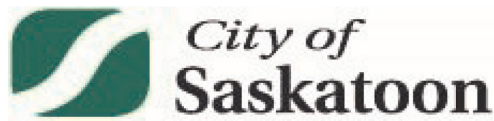


Flooding: Stage 3



Flooding: Stage 4

**Flooding:** A portion of Rosewood Park is designed to accommodate temporary storage of stormwater during a major storm event. During such an event, surface water enters the park from the northeast (see Stage 1) and is contained in the north portion of the park. Should the storm exceed a 1 in 100 year event, the grading is designed for the stormwater to spill onto the street at the northwest corner (see Stage 4).



Parks Division: Community Services Department  
1101 Avenue P North  
Saskatoon SK S7L 7K6

Note: This is a conceptual design only; it illustrates the design intent for the park, addressing the program elements identified by the community. During the next stages of the process (detail design, tender and construction) minor changes may occur to the plan as a result of budgets, material availability or site conditions. Only changes affecting the program elements will be communicated to the public.

# Rosewood Secondary Core Park East Proposed Conceptual Design: May 5th, 2021 Temporary Stormwater Storage

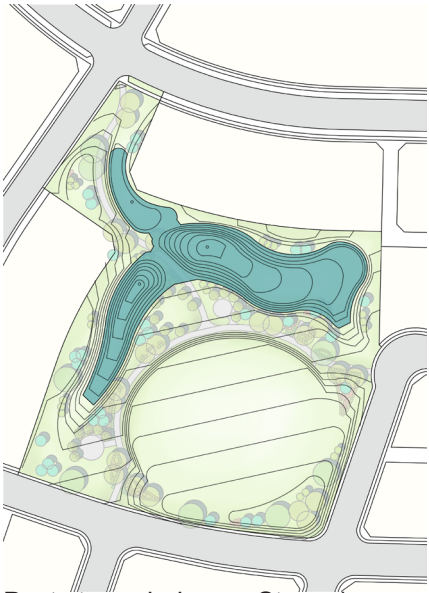




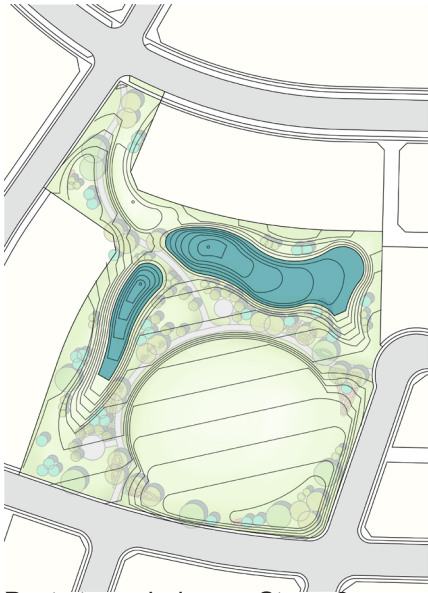
Henry Kelsey Park: 33rd Street and Valens Drive, West



Henry Kelsey Park: 33rd Street and Valens Drive, West



Post storm drainage: Stage 1



Post storm drainage: Stage 2

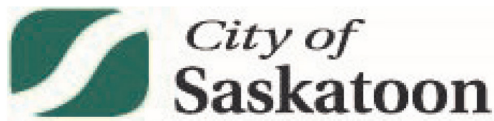


Post storm drainage: Stage 3



Post storm drainage: Stage 4

**Drainage:** The park is designed to accommodate this “temporary” storage of stormwater away from the program components of the park (open play area, labyrinth, adult fitness equipment, etc.). Following a major storm event, the water will be drained away through catch basins within the park - following a 1 in 100 year event, the storm sewer system may take 6 - 8 hours to drain the park.



Parks Division: Community Services Department  
1101 Avenue P North  
Saskatoon SK S7L 7K6

Note: This is a conceptual design only; it illustrates the design intent for the park, addressing the program elements identified by the community. During the next stages of the process (detail design, tender and construction) minor changes may occur to the plan as a result of budgets, material availability or site conditions. Only changes affecting the program elements will be communicated to the public.

# Rosewood Secondary Core Park East

## Proposed Conceptual Design: May 5th, 2021

# Temporary Stormwater Drainage