



KINSMEN PARK

PARKING STRATEGY & TRANSPORTATION STUDY

OPEN HOUSE #2 | NOVEMBER 2019

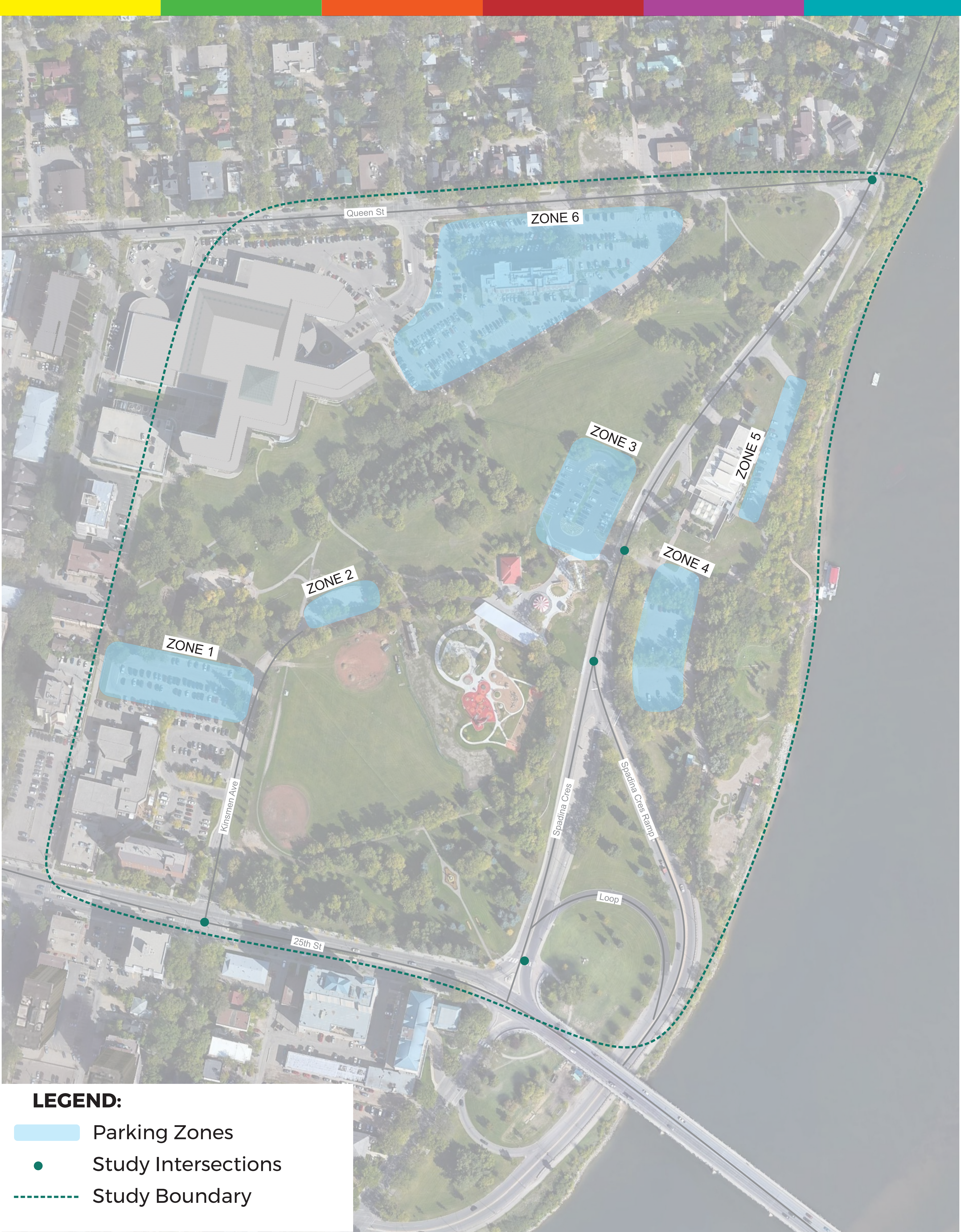


BACKGROUND

- Conducted one-on-one stakeholder meetings with City staff and business owners to establish baseline conditions and identify concerns.
- Held an initial public open house event on April 2019 to identify additional issues and concerns from the public.
- Conducted parking survey, traffic counts, and capacity analysis to establish baseline conditions and transportation infrastructure deficiencies.
- Estimated future demand for parking and traffic operations within the Kinsmen Park Area based on identified development specific growth.

KINSMEN PARK

PARKING STRATEGY & TRANSPORTATION STUDY



INITIAL ISSUES & CONCERNS

The following issues and concerns were highlighted from the previous engagements:

- Unsafe for vulnerable road users, particularly children, at the Nutrien Playland and Wonderhub crossing.
- Congestion at the Nutrien Playland and Wonderhub access.
- Provide bike lanes and parking spaces.
- Provide shuttle / transit services.
- Improve public information / knowledge regarding the available parking spaces in the Kinsmen Park Area.
- Unsafe pedestrian crossing at the University Bridge.

KINSMEN PARK

PARKING STRATEGY & TRANSPORTATION STUDY

Parking Demand Management

- 1 Improve Parking Enforcement
- 2 Implement Time Limit on Weekend
- 3 Improve User Information, Marketing and Way-finding
- 4 Digital Parking Display
- 5 Paid Parking Program
- 6 Remote Parking & Shuttle Services
- 7 Additional Parking in Zone 1
- 8 Redesign Zone 1 Facility
- 9 Potential Zone 3 Expansion
- 10 Potential Parking on Kinsmen Ave
- 11 Maintain Zone 2 Parking
- 12 Potential Zone 4 Upgrades
- 13 Maintain and Upgrade Zone 5
- 14 Shared Parking w/ Zone 6
- 15 Pick-up / Drop-off Areas

Traffic Demand Management

- 16 Develop Special Events Traffic & Parking Management Plans
- 17 Bike Share
- 18 Transit Services
- 19 Shuttle Program
- 20 Employee Trip Reduction



LEGEND:

- Proposed Dedicated Pedestrian & Cyclists Facilities
- Existing Pedestrian & Cyclists Facilities
- Existing Parking Zones
- Potential Parking Supply

Horizons:

- # Short-term
- # Medium-term
- # Long-term

KINSMEN PARK

PARKING STRATEGY & TRANSPORTATION STUDY

Active Transportation Improvements

- 21 Modifications along Spadina Cres (i.e. Playground Area / Zone)
- 22 Improve Crosswalks at University Bridge to improve vulnerable road users' safety
- 23 Upgrade Spadina Cres to AAA Network (i.e. protected bike facilities)
- 24 Implement Multi-Use Pathways
- 25 Improve Sidewalks Connectivity

Traffic Operations

- 26 Right-in / Right-out Access at Zone 3/4
- 27 Roundabout Improvements

