

## “What We Heard”

### Background

The City of Saskatoon is upgrading the storm water system to improve flood protection to residential and business properties near the 1<sup>st</sup> Street/Dufferin Avenue and Taylor Street/Broadway Avenue intersections. Storm water from the flooded intersections will be temporarily retained in a newly constructed dry pond in the nearby W.W. Ashley District Park until the existing storm water system has enough capacity to drain the water to the river (approximately 7 to 8 hours after a rain event). This project will reduce flood risk for approximately 37 properties in a 1-in-10 year storm.

An open house to provide information and seek feedback on W.W. Ashley District Park Redesign to include a dry storm pond was held on June 17<sup>th</sup> from 3:00 p.m. to 8:00 p.m. at the J.S. Woods Library. Input was also sought about adding angle parking to Albert Avenue between Taylor Street and 2<sup>nd</sup> Avenue. Flyers were distributed to approximately 1,200 households and businesses in the area (see Appendix #1 for the flyer and area it was distributed), an e-mail was sent to people who had subscribed for updates, a sign was erected on the corner of Taylor Street and Lansdowne to promote the event, and sport field user groups were notified. Approximately 30 people attended and 15 feedback forms were completed. Poster boards provided information about flood mapping, the Flood Control Strategy, design of how the new storm water infrastructure would work, and conceptual renderings of the new park (See Appendix #2).

The following summarizes 15 questionnaire responses from people attending the open house.

### W.W. Ashley Park Redesign Questions

**What would you like the City to consider for the design and/or programming for the combined dry storm water pond and recreation area?**

Accessibility:

- Possibly paths to walk above the storm pond
- More than one access for wheelchair.
- Paths for people to cross park, corner to corner
- Barrier free and accessible
- Walking paths
- Consider multiple access points at least at each corner and halfway on long sides that are wheelchair and children’s bike accessible. Children will cut across to go to the playground and we want them to go down and up the slopes and not fall especially on bikes.
- Access for wheelchairs and scooters.

#### Amenities:

- Benches for reading
- Benches
- Garbage cans could be added to the area. There are quite a few litterbugs who are attracted to these recreational areas.
- A pergola perhaps for some shade.

#### Design Considerations:

- Rounder shape is way better than a rectangle
- Family oriented
- Please consider gentle change in slope as it comes to the base so those riding bikes don't come to a sudden slope change and tumble over their bikes. Also important for winter tobogganing.

#### Potential Park Uses:

- Great places to chill on the slope and read a book from the library.
- Place for concerts
- Space for continued kite flying
- Room for walking dogs
- Family space
- Make it so it can be used as a pretty green space. (walking/recreation)
- Useful for all 4 seasons
- Open space for kids to continue kite flying

#### Vegetation:

- Big willow trees (they like wet conditions)
- Food forest, community orchard that is flood friendly
- Minimize tree loss to absolute minimum

#### Concerns:

- I am concerned that excavating 4.3 m out of Ashley Park will create a wet bog. Before the drain in Ashley Park was put in, there was a large pond every year. Please consider digging a small test hole prior to excavation to see if the area remains dry.
- We purchased our house because it was across from a park. You are now destroying it. Duncan McKercher said "this is one of the best used parks in the city." There were people at the pool, paddling pool, playground, Skate Park, playing soccer + ball. Why would you take that away? You are destroying the view of our well used park. We purchased our home over 25 years ago for the view/access of the park, not to be able to look at a berm + no accessible access every angle of the park.
- Should there be a fence to restrict access by young children, particularly those under the age of 10, who frequent the playground and splash pad? Safety of young children in proximity to a storm pond with water is a risk. (Follow-up comment by phone)

## Sticky Note Comments on Park Design/Use

- Rain Garden
- A small food forest that has temporarily flood resistant plants.
- Soccer field
- Incorporate paths where people actually walk.
- Make it a park with trees, plants, walking paths, benches, and garbage cans.
- More than one wheelchair access ramp.
- 2 tennis courts (may cost too much)
- A putting green for golfers
- Imagine a smaller/shorter but broader version of Bez gardens
- Imagine a community space to hang out in nature on a sloped bank
- No giant dusty mud hole like dog park at the end of Broadway
- Consider flooding in winter and making a skating rink.

## Albert Avenue Parking Option

**What do you think about adding angle parking along the west side of Albert Avenue?**

- **Yes:**
  - Seems like a possible solution to increased parking
  - Good idea!!
  - Yes, add angle parking
  - Why not?
  - Yes good plan
  - Yes, add angle parking.
  - Yes to angle parking
  - It would be ok.
- **No:**
  - No to angle parking
  - We are against any kind of increased parking on Albert. Students at the high school are constantly gathering on Albert. Garbage is left behind every night as well as loud vehicles after 11pm. Any extra parking could be added along Taylor on the North side of Bowman.
  - Do not want it at all. It will just make it easier for the kids (teens) to party on our street.
  - More parking? The city has enough parking. How about more alternatives to driving. Please stop investing only in cars. (put a cross walk from Bowman to Stores) [Stop making things worse for AT people]
  - Absolutely not. We are currently having so much trouble with teens on Albert between Taylor and 2<sup>nd</sup> St. There is garbage all over the street every morning. Police have been called numerous times. The kids are disrespectful of our neighborhood and more parking would compound this issue. Parking is a deal breaker.
  - I am against angle parking from 1<sup>st</sup> to 2<sup>nd</sup>. We'll have more traffic on Albert Ave, more problems with the students loitering, littering, speeding, and hanging out because their vehicles will be close together. Could you also extend the 30 K speed limit further?
  - No angle parking

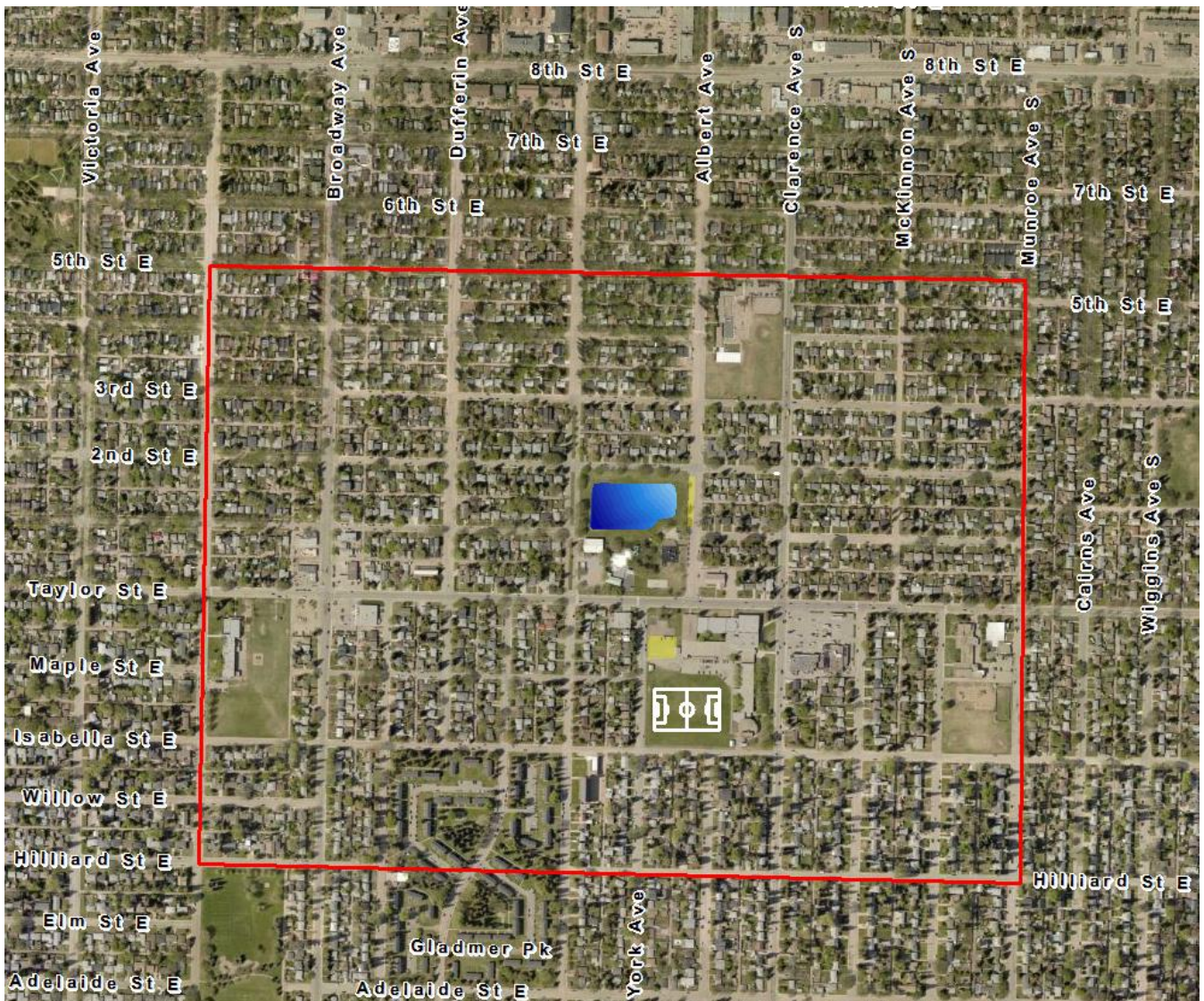
- Strongly opposed to narrowing this street with more parking. This street is frequented by young children and families on bikes and is wide enough to be a safe street to do this on. Many people on bikes use this as an entry point to the playground, Skate Park, pool and field. I have major safety concerns with congesting this area especially in the context of the girl that passed away this year 1 block from here. Also, I think we should not be encouraging more cars in general in the area and keeping parking restricted would encourage more local bike traffic to the park (more exercise, healthier people).
- **Indifferent:**
  - I am ok with this either way.
  - Would be ok except how to prevent students from parking there all day? What about loitering during evening and nights? There are some issues with gangs/drugs etc. We don't need more places for them to cause problems.

## Any Other Comments

- Some house owners cannot continue to own their houses if there is a yearly increase in property taxes around 4-5% per year.
- Reduce the speed limit down Albert between Taylor and 4-6<sup>th</sup> St as there is a lot of foot traffic or put in speed bumps.
- I really can't understand why we were not as a community given notice of these changes – a meeting that is accessible for all. Maybe a vote. We pay taxes – are we getting a cut in taxes??? As we now longer have the view + the noise we will have to put up with the construction all of 2020. To me the City does not care about what the people think. They don't want us all in the community to express all of our concerns at once!!!
- If our elected officials didn't vote against what they know to be right and morally correct we wouldn't need these climate change adaption strategies.
- Verbal concerns about gang members vandalizing in T back alleys, suspected drug dealing in collaboration with taxi/ride share drivers, and people's backyard privacy being compromised because of height of new infills in the neighbourhood.
- Cost is an issue
- Lowering flood-related insurance rates in area would be a consideration to pursue by the city.
- Risk of flooding of the Aden Bowman Collegiate may increase if grading of the new sports field is not correct (Follow-up comment by phone).

# APPENDIX A: Open House Flyer Delivery Map and Flyer

## Flyer Delivery Map



## W.W. Ashley District Park Redesign Open House

The City of Saskatoon is upgrading the storm water system to improve flood protection to residential and business properties near the 1st Street/ Dufferin Avenue and Taylor Street/ Broadway Avenue intersections. This will impact the multi-purpose sport field at W.W. Ashley District Park and some local roads during construction.

### Coming soon to the area:

1. A new underground pipe system will drain water more quickly from the streets (construction in 2020).
2. A new storm water dry pond will be constructed in the W.W. Ashley District Park sport field to temporarily hold rain water during a major storm (construction in 2020).
3. The sport field at Aden Bowman Collegiate will be reconstructed with a full-size soccer field to allow for uninterrupted student and community access to sports programming (construction in 2019).
4. New angle parking will be considered on Albert Avenue from 1st Street E to 2nd Street E.

***Help us design your new green space!***

**Monday, June 17, 2019**

**3:00 - 8:00 p.m.**

**Come-and-go format**

**J.S. Wood Library, 1801 Lansdowne Avenue\***

*\*This location does not have an elevator to the lower level meeting space. Please do not let accessibility be a barrier for you to participate; we are pleased to make alternate arrangements with you.*

If you have any questions or concerns, please contact Project Manager, Aden Rongve, at [aden.rongve@saskatoon.ca](mailto:aden.rongve@saskatoon.ca) or 306-986-0914.

For more information, please visit [saskatoon.ca/engage](http://saskatoon.ca/engage) (W.W. Ashley Park)



Conceptual New Design of W.W. Ashley District Park  
(Details and shape of dry pond are subject to change)



Do you support adding angle parking on Albert Avenue?



# APPENDIX B: Dry Pond Renderings

## Conceptual Dry Pond Design (Normal Conditions)



## Conceptual Dry Pond Design (Flood Conditions)

