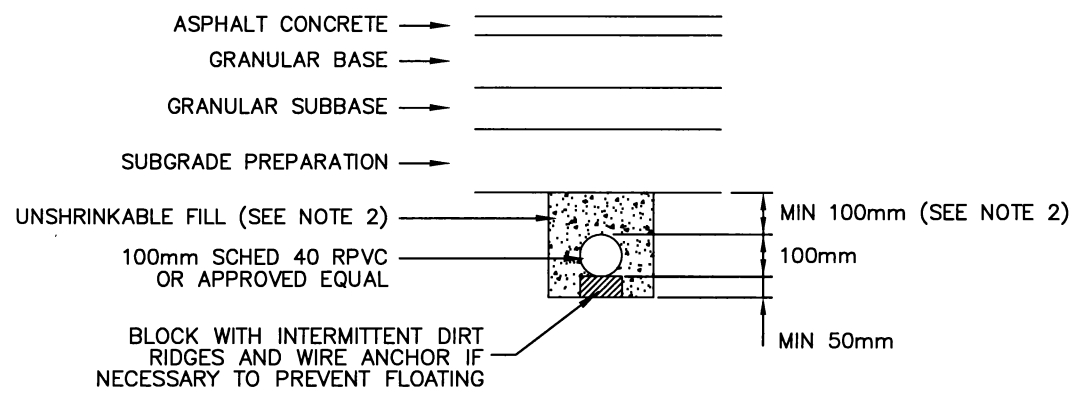
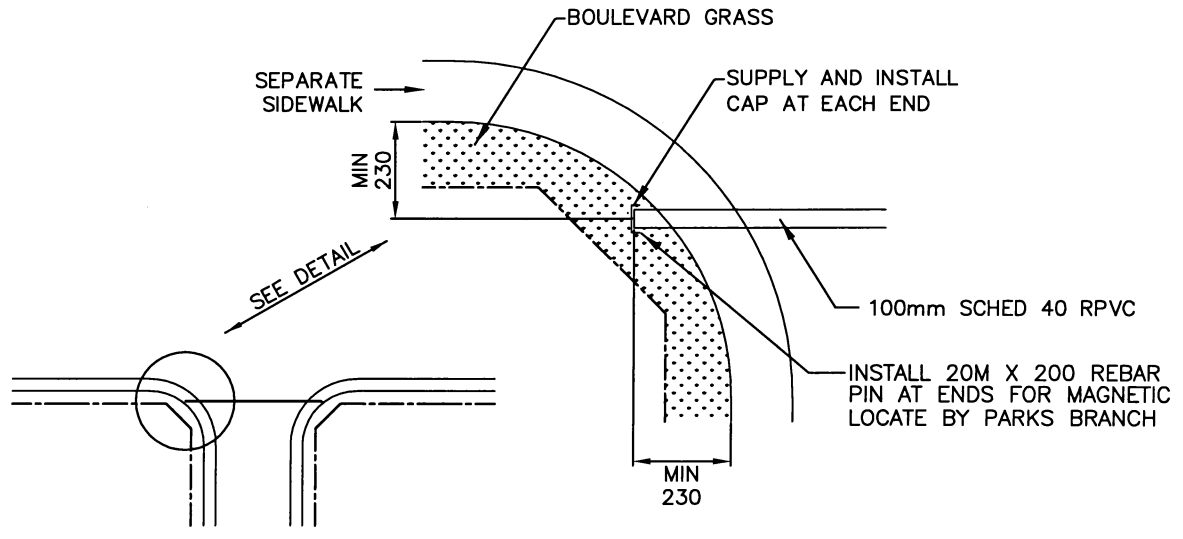


PROFILE



SECTION A-A



TYPICAL PLAN

NOTES:

1. PULL ROPE MUST BE INSTALLED IN SLEEVE (1/4" POLY ROPE OR APPROVED EQUAL)
2. UNSHRINKABLE FILL MAY EXTEND TO UNDERSIDE OF SUBBASE IF INSTALLED AFTER SUBGRADE PREPARATION
3. UNSHRINKABLE FILL AS PER STANDARD SPECIFICATIONS DIV. 8 SEC. 08000
4. AFTER BACKFILL PULL 75mm MANDRELL THROUGH SLEEVE IN PRESENCE OF ENGINEER

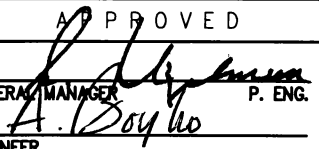
REVISIONS	
1	
2	
3	
DRAWN BY	A. YOUNG
DATE	2003-02-27
CHECKED BY	
DATE	



City of Saskatoon
Infrastructure Services Department

TYPICAL ROADWAY CROSSING
IRRIGATION SLEEVE

APPROVED



GENERAL MANAGER P. ENG.
ENGINEER

ENGINEER _____

SCALES : HOR. NTS _____

PLAN NO. 102-0007-007r001