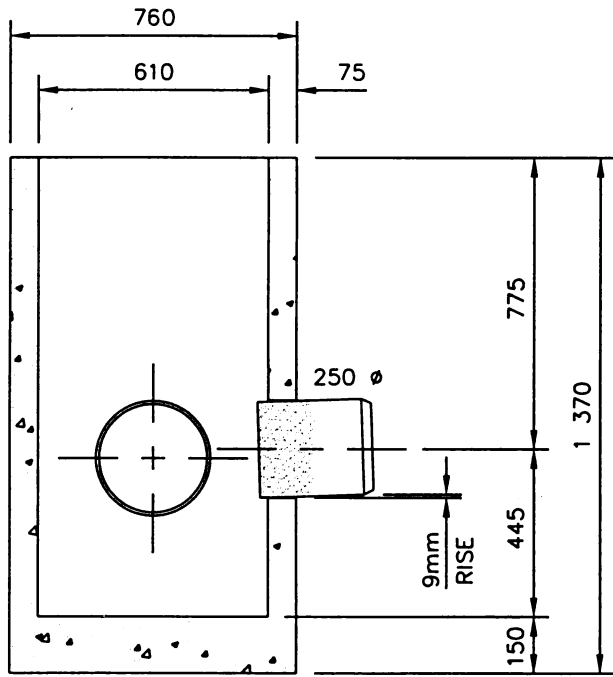
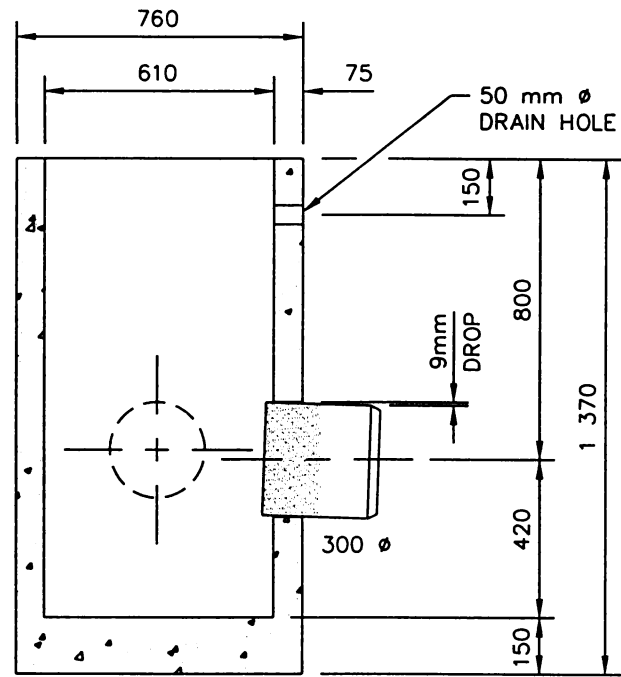


- CAST-IN-PLACE CB OUTLET**
- 300 mm ϕ x 300 mm LONG SDR35 PVC C/W BONDED EXTERIOR GROUT COAT
 - END BEVELLED TO PVC PIPE SPECIFICATIONS
 - SLOPED FOR DISCHARGE AT 3% GRADE
- ANGLE OF DISCHARGE PIPE TO BE SPECIFIED PRIOR TO MANUFACTURE
- CAST-IN-PLACE CB INLET**
- 250 mm ϕ x 300 mm LONG SDR35 PVC C/W BONDED EXTERIOR GROUT COAT
 - END BEVELLED TO PVC PIPE SPECIFICATIONS
 - SLOPED FOR INTAKE AT 3% GRADE



A-A



B-B

SPECIFICATIONS

- MANUFACTURED IN ACCORDANCE WITH A.S.T.M. SPECIFICATIONS C-478 & ALL CURRENT REVISIONS.
- MINIMUM CONCRETE STRENGTH SHALL BE 27.6 MPa IN 28 DAYS.
- REINFORCING STEEL FOR BASE SHALL BE 10 M REINFORCING RODS PLACED 150 mm O.C. EACH WAY.
- ALL CONCRETE SHALL BE PLACED MONOLITHICALLY.

ALL DIMENSIONS IN MILLIMETRES UNLESS OTHERWISE NOTED

REVISIONS	
1	
2	
3	

DRAWN BY MJ
 DATE 99-01-27

CHECKED BY _____
 DATE _____

INFRASTRUCTURE SERVICES
 - City of -
 Saskatoon

**STORM DRAINAGE CATCH BASIN
 (FOR TANDEM INSTALLATION)**

APPROVED

[Signature]
 GENERAL MANAGER P. ENG.

[Signature]
 ENGINEER

ENGINEER _____

SCALES : HOR. 1:20 VERT. _____

PLAN NO. 102-0010-002r001