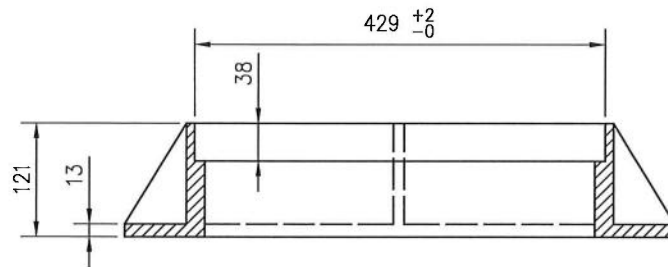


PLAN





SECTION 'A-A'

MATERIAL SPECIFICATIONS:

(ALL SPECIFICATIONS & STANDARDS REFER TO LATEST EDITION)

- GREY CAST IRON TO CONFORM TO A.S.T.M. A48 CLASS 35B
- MASS = 57 KILOGRAMS ±5%
- COATED CASTINGS ACCEPTED ONLY WHEN REQUIRED BY CITY.

PLAN DESCRIPTION/REVISION		DATE	BY	APPROVALS	
1	ORIGINAL STANDARD DRAWING	2020-JAN-30	DLH		
				SIGNATURE ANNA COLE	SIGNATURE MATT JURKIEWICZ
				NAME 18-Feb-2020	NAME FEB 20 2020
				DATE SIGNED	DATE SIGNED
				SCALES: HOR. N.T.S. VERT.	PLAN NO. 102-0010-022r001



CATCH BASIN SURFACE INLET FRAME
TYPE K-1