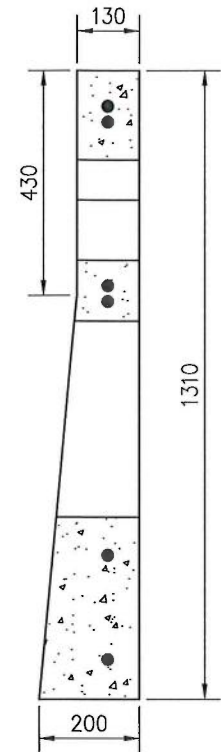
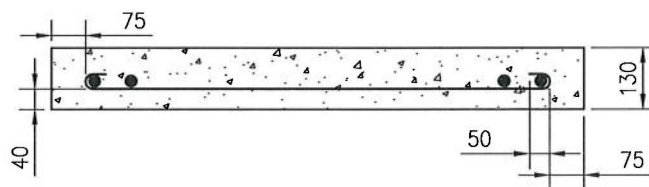


PLAN



SECTION 'B-B'



SECTION 'A-A'

MATERIAL SPECIFICATIONS:

(ALL SPECIFICATIONS & STANDARDS REFER TO LATEST EDITION)

- CEMENT: SULPHATE RESISTANT TYPE: TYPE HS (TYPE 50) TO CSA A3001 OR TYPE V TO ASTM C150
- CONCRETE COMPRESSIVE STRENGTH: 30 MPa AT 28 DAYS
- AIR CONTENT: 4 TO 7% EXCEPT WHERE NO-SLUMP CONCRETE IS USED
- CONCRETE CLEAR COVER: 30mm MIN
- REINFORCING STEEL: DEFORMED BARS TO CSA G30.18, $f_y = 400$ MPa TO BE 15M BARS WITH COLD BENDS, INSIDE RADIUS 30mm & SLANTED

PLAN DESCRIPTION/REVISION		DATE	BY	CITY OF SASKATOON		APPROVALS	
1	ORIGINAL STANDARD DRAWING	2020-JAN-30	DLH				
				CATCH BASIN PRECAST SLAB TOP TYPE K-1		NAME: ANNA COLE DATE SIGNED: 18-FEB-2020 SCALE: HOR. N.T.S. VERT. N.T.S.	
						PLAN NO. 102-0010-023r001 DATE SIGNED: FEB 20 2020	