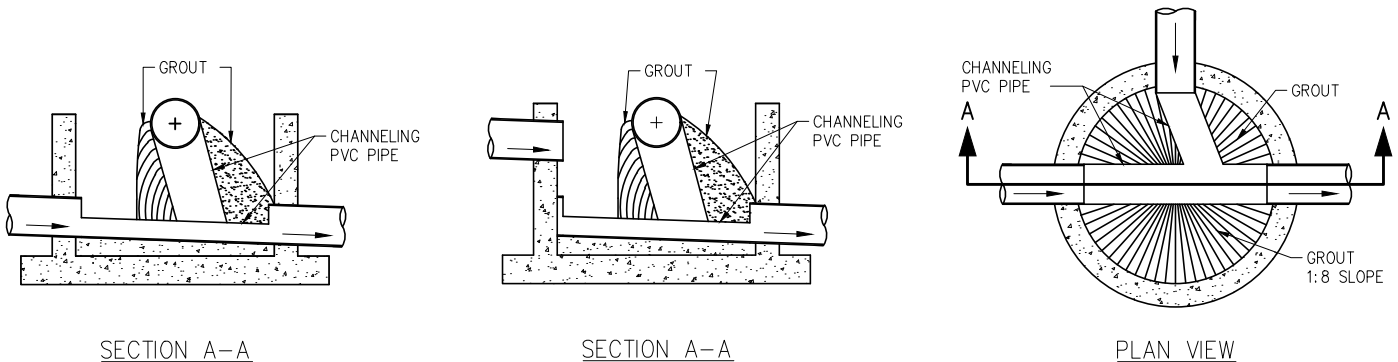


NOTES:

1. ALL CAST IN PLACE CONCRETE INCLUDING CHANNELING AND BENCHING TO BE 35 MPa (IN 28 DAYS) SULPHATE RESISTANT. ALL GROUT TO BE NON-SHRINK, TYPE HS SULPHATE RESISTANT, CEMENTITIOUS GROUT.
2. PLACE 10M BARS AT 200mm O.C. EACH WAY IN BASE OF MANHOLES OVER 4.5m DEEP.
3. ALL PRECAST CONCRETE SECTIONS SHALL BE MANUFACTURED IN ACCORDANCE WITH ASTM SPECIFICATION C478/C.O.S. SPEC'S.
4. SAFETY PLATFORMS MEETING CITY OF SASKATOON STANDARD SPECIFICATIONS SHALL BE INSTALLED IN ALL MANHOLES WITH DEPTHS GREATER THAN 6.0 METERS.
5. SAFETY PLATFORMS SHALL BE INSTALLED IN SUCH A MANNER SO THAT NO VERTICAL FALL DISTANCE EXCEEDS 5.0 METERS OR IS LESS THAN 2.4 METERS.
6. MANHOLE RUNGS SHALL BE ORIENTED SUCH THAT THEY DO NOT INTERFERE WITH THE INCOMING PIPE.
7. PVC CHANNELING REQUIRED FOR SANITARY SEWERS, GROUT CHANNELING IS ALLOWABLE FOR STORM SEWERS. PVC CHANNELING SHALL BE SEAMLESS FOR STRAIGHT THROUGH BASES.
8. PIPE TO MANHOLE CONNECTIONS SHALL BE WATERTIGHT.
9. TAPERED RUBBER ADJUSTMENT RISER RINGS ARE REQUIRED ON CATCH BASINS AND MANHOLES THAT ARE OFFSET FROM CENTER OF THE ROAD.

CHANNELIZATION DETAILS FOR INTERIOR DROP OF LESS THAN 0.75M



PLAN DESCRIPTION/REVISION	DATE	BY	APPROVALS		
1 ORIGINAL DRAWING	2009-FEB-20	MLB	<p>City of Saskatoon</p> <p>STANDARD 1200mm MANHOLE FOR 200mm TO 600mm SEWERS</p>	<p><i>Jeff P D Thomson</i></p> <p>SIGNATURE Jeff P D Thomson</p> <p>NAME Jan 27, 2021</p> <p>DATE SIGNED</p>	
2	2012-JAN-05	HLO			<p><i>Maciej Jurkiewicz</i></p> <p>SIGNATURE Maciej Jurkiewicz</p> <p>NAME Jan 27, 2021</p> <p>DATE SIGNED</p>
3 REVISED NOTES 1, 4, 5, 6, & 7	2014-DEC-12	MJ			
4 ADDED GROUT AROUND PIPES AT MH BASE AND REVISED NOTES 6 & 7	2015-NOV-26	HLO			
5 REMOVED GROUT AROUND PIPES AT MH BASE, REVISED NOTES 1 & 3, AND ADDED NOTE 8.	2017-JAN-25	HLO			
6 ADDED NOTE 9, GRADE RING MIN., & RUBBER ADJ. RISER RINGS	2021-JAN-13	DLH			
				<p>SCALE: _____ PLAN NO. 102-0011-009R006</p> <p>HOR. 1:40</p> <p>VERT. _____</p>	