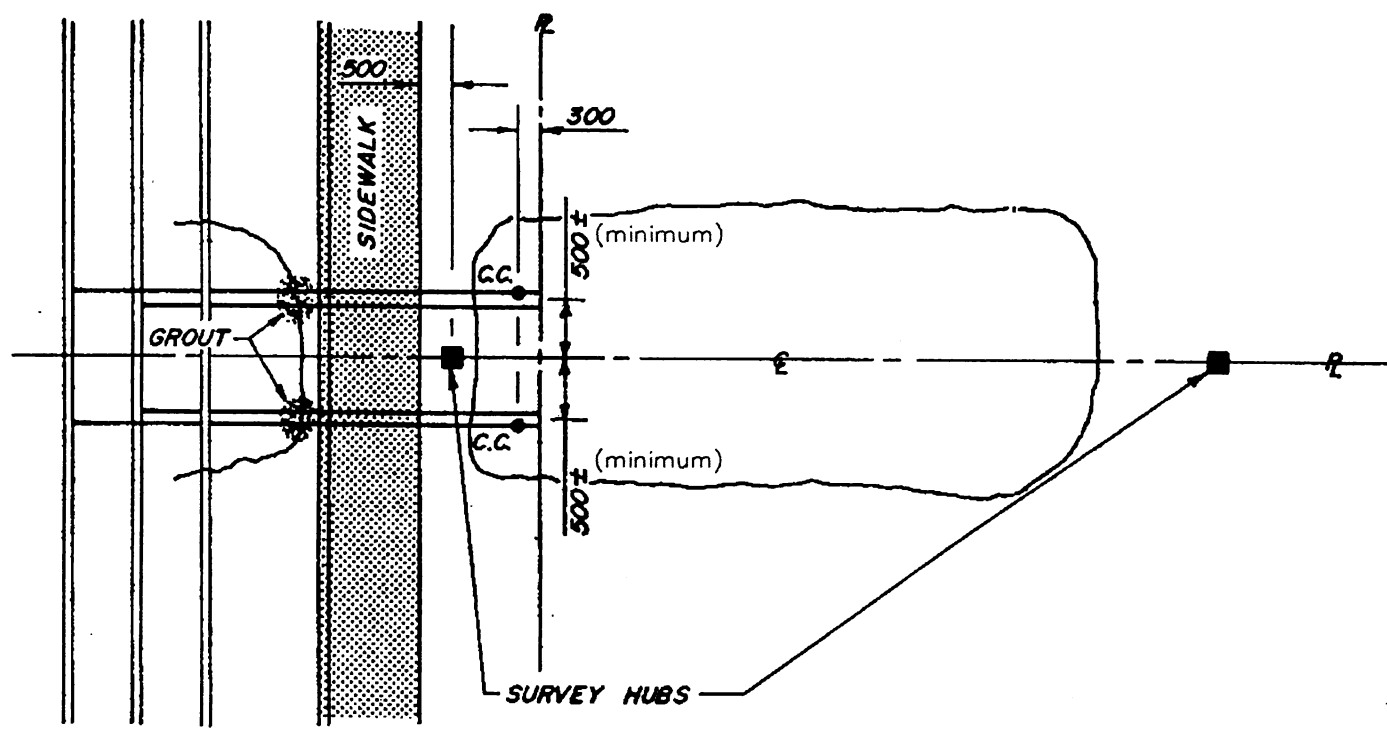

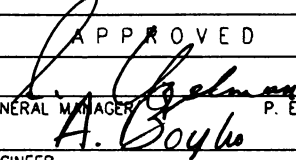


WATERMAIN  
 SANITARY SEWER  
 STORM SEWER  
 OR OTHER UTILITY



1. CURB BOX (WATER LINES) TO BE LAYED TO THE OUTSIDE
2. CENTER LINE MUST BE LOCATED @ DUPLEX E.O.P. &
3. GRADES FOR BOTH CONNECTIONS WILL BE IDENTICAL UNLESS OTHERWISE STIPULATED.
4. DIMENSIONS ARE IN MILLIMETER UNLESS OTHERWISE SHOWN.

REVISIONS 1 RBY 02/02/2000 2 3		 <p>City of Saskatoon</p> <p>INFRASTRUCTURE SERVICES</p>	APPROVED  GENERAL MANAGER P. ENG. ENGINEER
DRAWN BY R.F. DATE APR. 1, 1992 CHECKED BY DATE			ENGINEER SCALES : HOR. N.T.S. VERT. 08025-3 PLAN NO. 102-0013-003r001

TYPICAL DUPLEX WATER AND  
 SEWER SERVICE CONNECTIONS