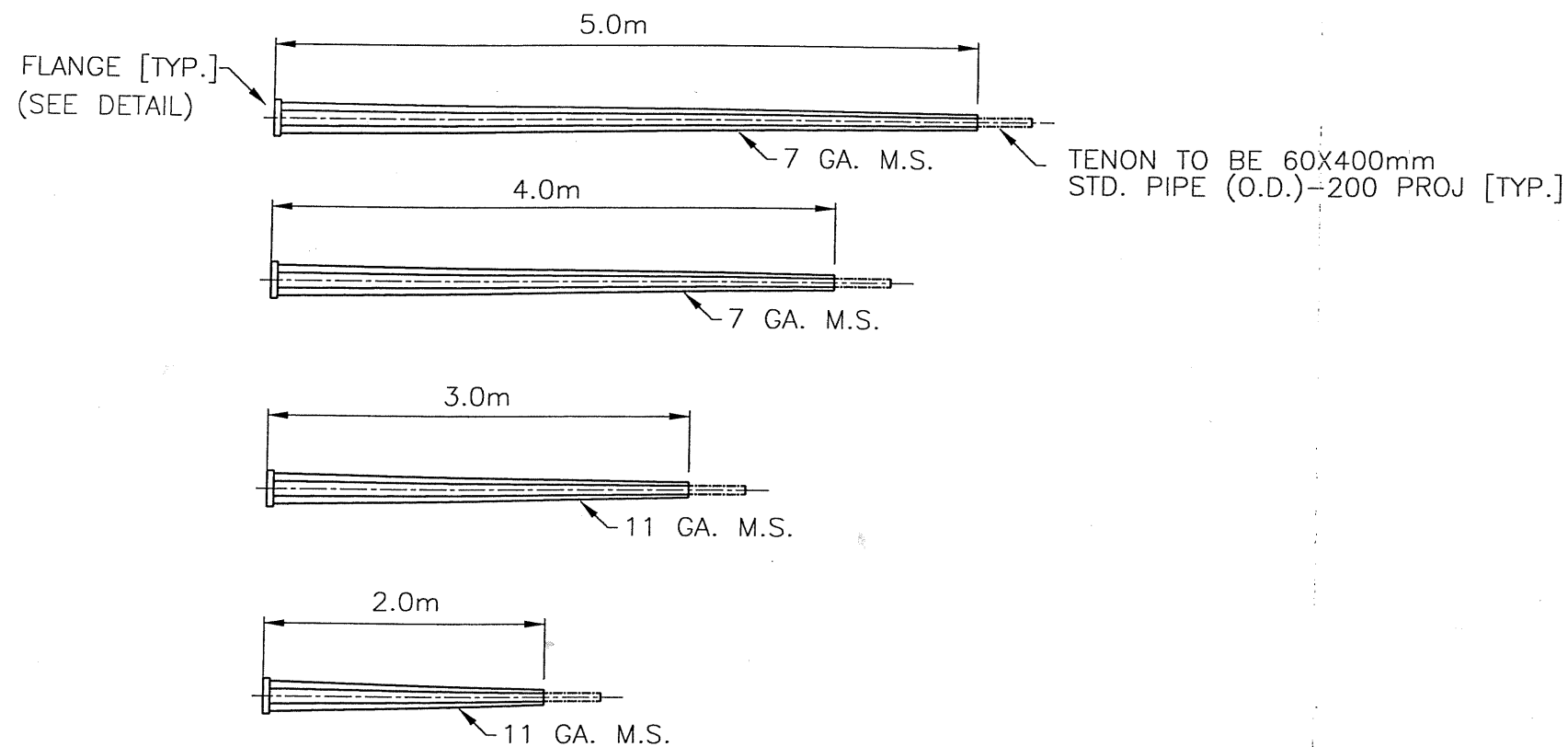


TRAFFIC SIGNAL ARMS

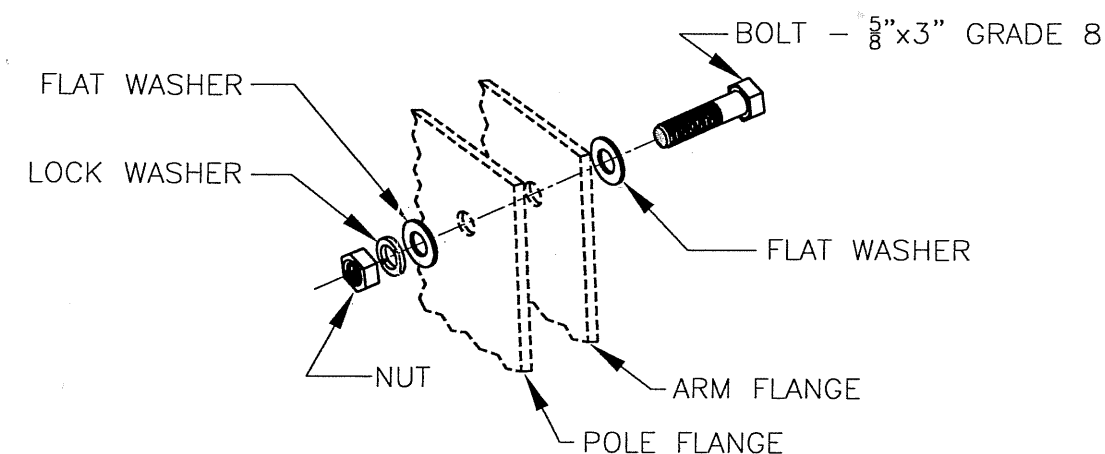
NTS



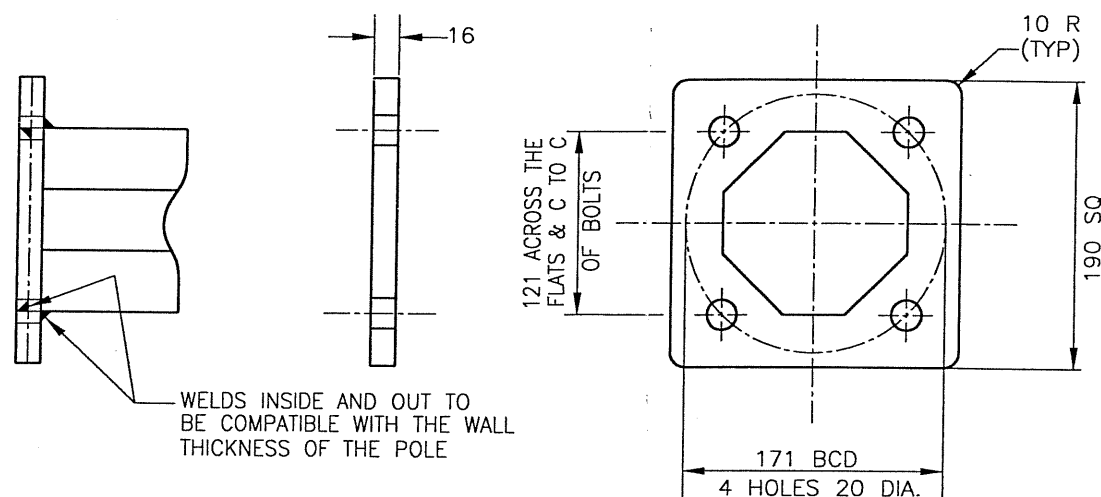
NOTES

1. ALL ARMS TO HAVE AN OCTAGONAL CROSS SECTION, TO BE STRAIGHT AND TRUE.
2. ALL WELDS TO BE CONTINUOUS.
3. STEEL GAUGES SHALL BE METRIC EQUIVALENT WHEN AVAILABLE.
4. EACH ARM TO BE SUPPLIED WITH FOUR GALVANIZED 5/8" X 3" LG. GRADE 8 N.C. S.A.E. HEX HEAD BOLTS C/W NUTS AND WASHERS FOR FLANGE CONNECTIONS. ATTACH LOOSELY DURING SHIPPING (SEE BOLT ASSEMBLY DETAIL)
5. FINISH SHALL BE: HOT-DIP GALVANIZED
6. ALL ARMS SHALL BE INDIVIDUALLY WRAPPED.
7. ALL ARMS SHALL BE DESIGNED TO SUPPORT SIGNAL HEADS AND/OR SIGNS HAVING A MAX. WEIGHT OF 50kg AND A MAX. TOTAL PROJECTED AREA OF 1.1m², MOUNTED AT THE END OF THE TRAFFIC SIGNAL ARM.

BOLT ASSEMBLY



FLANGE DETAIL



11					
10					
9					
8					
7					
6					
5					
4					
3					
2					
1	BASE PLAN	1			
	DESCRIPTION	DATE	NO.	REVISED NOTES	JAN 05 RPH
				REVISIONS	DATE BY

STAMP
APPROVED FOR CONSTRUCTION
 JAN 26 2005
 DATE

MUNICIPAL ENGINEERING		PUBLIC WORKS	
ENGINEER	<i>G. J. P.</i>	ENGINEER	
ENGINEER		ENGINEER	
DRAWN BY	CJP	DRAWN BY	
DATE	96 06 28	DATE	
CHECKED BY		CHECKED BY	
DATE		DATE	



SPECIFICATIONS FOR:
 TRAFFIC SIGNAL ARMS
 SPECIFICATION NO. 12502

GENERAL MANAGER	P. ENG
SCALE: HOR. 1:50	SHEET NO.
VERT.	
PLAN NO.	
102-0016-023r001	