

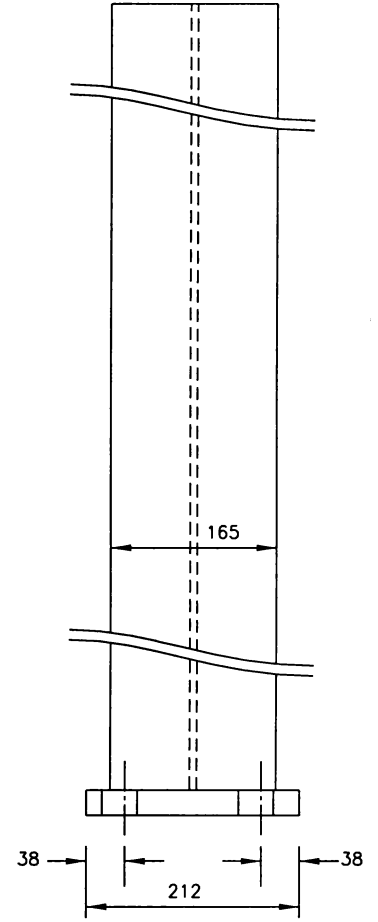
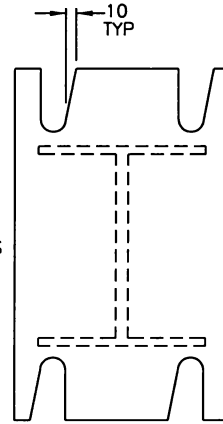
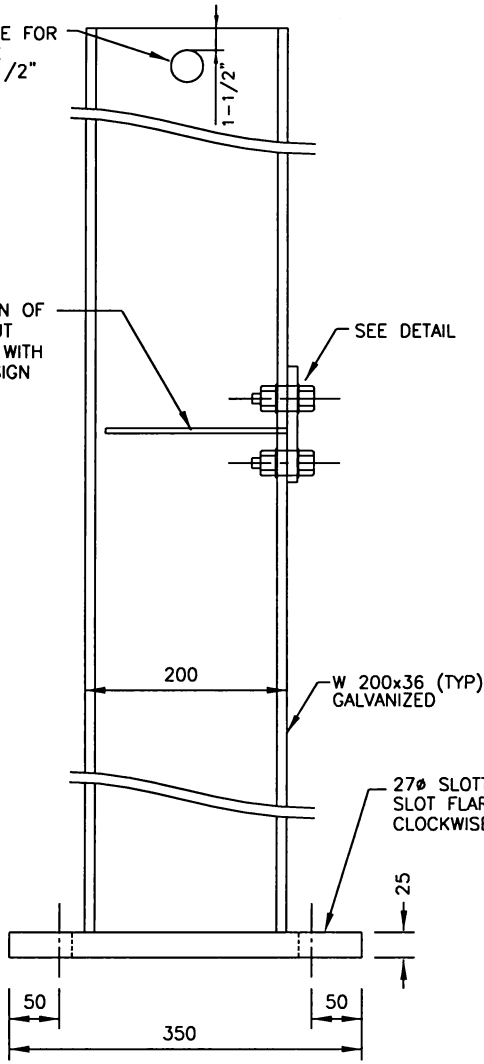
NOTES:

1. Structural steel to CSA G4021 grade 300W.
2. Weld electrode to CSA W481, E70-XX
3. Fabrication and erection of structural steel to CSA S16.
4. All structural steel to be galvanized.

2-1/2" HOLE FOR  
CRANE HOOK  
APPROX 1-1/2"  
FROM TOP

POSITION OF  
SAW CUT  
VARIES WITH  
EACH SIGN

SEE DETAIL

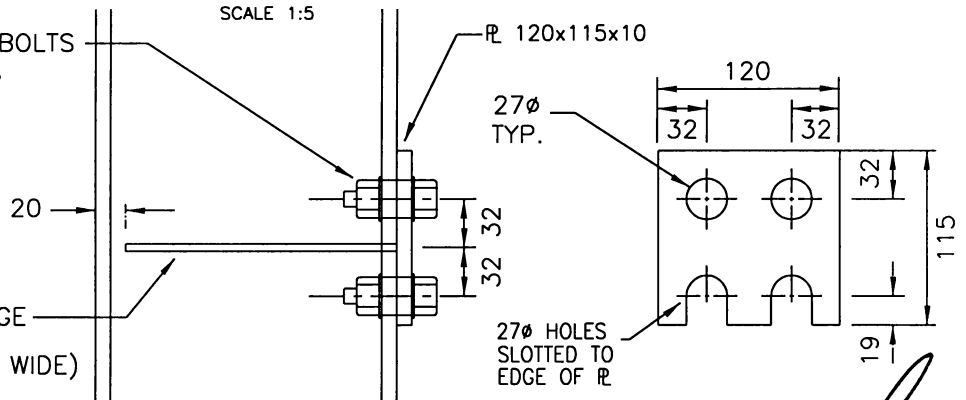


DETAIL

SCALE 1:5

4-25ØA-325 BOLTS  
c/w WASHERS,  
LOCKING NUTS

SAW CUT FLANGE  
AND WEB  
(APPROX. 1/8" WIDE)



D:\WORKING\102\0017\1020017012R003.DWG LAYOUT1.LYT 2003-01-08 14:16 BY ISREGANH

REVISIONS	
1	Added crane hook hole 05 02 CJP
2	REVISED HOLE DIMS 01 03 RPH
3	

DRAWN BY CJP  
DATE 01 09 06

CHECKED BY [Signature]  
DATE Jan 8/03



I-BEAM FOR  
ROADSIDE GUIDESIGN

APPROVED	
<u>[Signature]</u>	P. ENG.
GENERAL MANAGER	
ENGINEER	
ENGINEER	
SCALES : HOR. 1:7.5 VERT.	
PLAN NO. 102-0017-012r003	