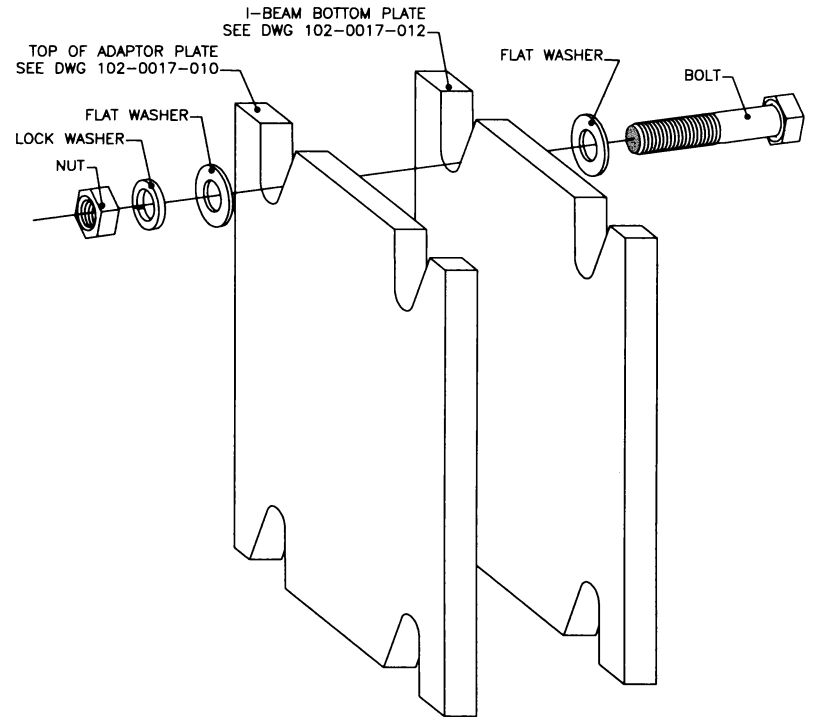
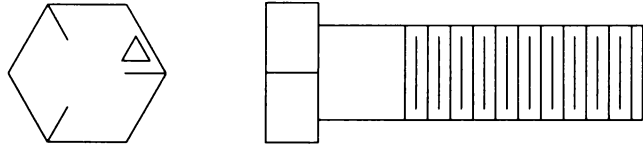
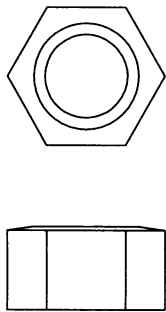


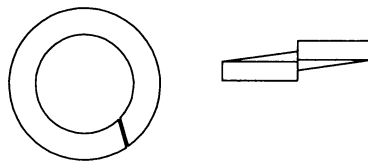
BOLT  
STANDARD BOLT - 1"x3 1/2"



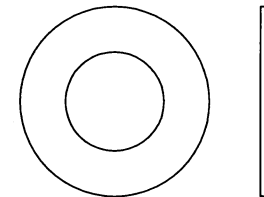
NUT  
STANDARD NUT - 1"



LOCK WASHER  
STANDARD LOCK WASHER - 1"




FLAT WASHER x2  
STANDARD FLAT WASHER - 1"



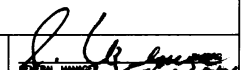
NOTE: BOLT ASSEMBLY TO BE -GRADE 5 QUALITY  
-GALVANIZED

NO.	REVISIONS	DATE	BY
1	REVISED BOLT LENGTH TO 3-1/2"	NOV 17 05	RPH

  
 MUNICIPAL ENGINEER  
 Nov 20, 2006  
 RPH  
 DATE: JAN 15 02  
 CHECKED BY:  
 DATE:



BOLT ASSEMBLY  
 I-BEAM TO ADAPTER PLATE  
 FOR GROUND MOUNTED SIGNS

  
 GENERAL MANAGER  
 SCALES: 1:2  
 HOR. SHEET NO.  
 VERT. PLAN NO.  
 102-0017-013r002