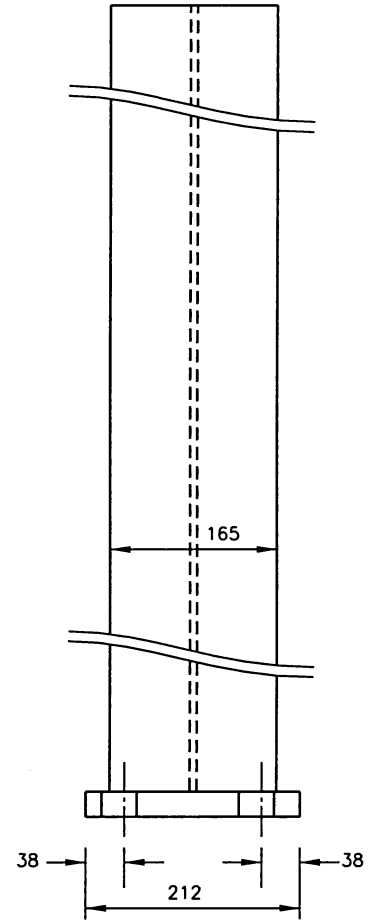
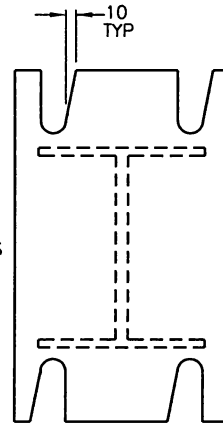
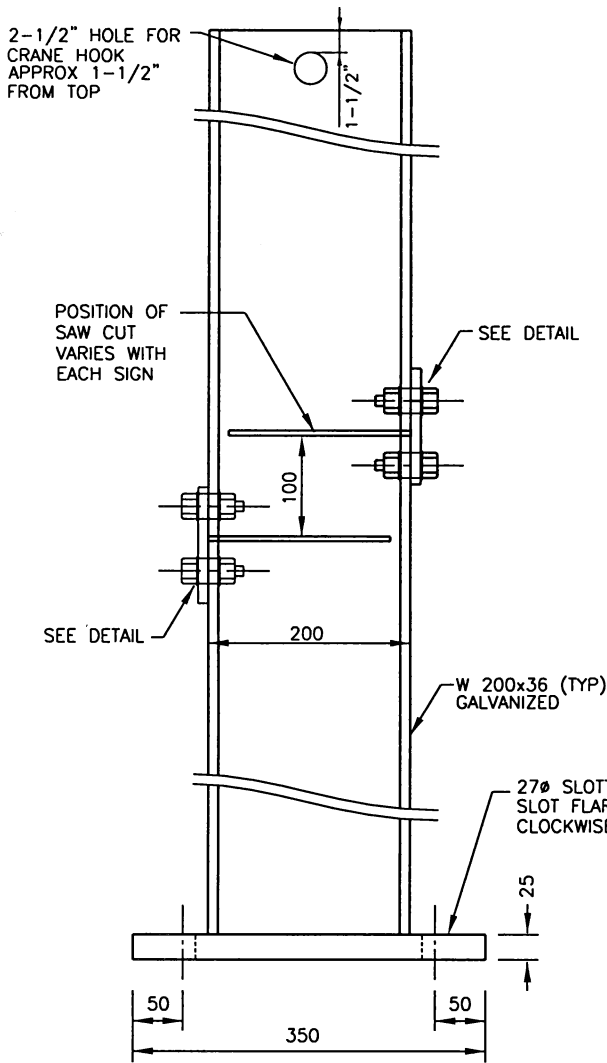


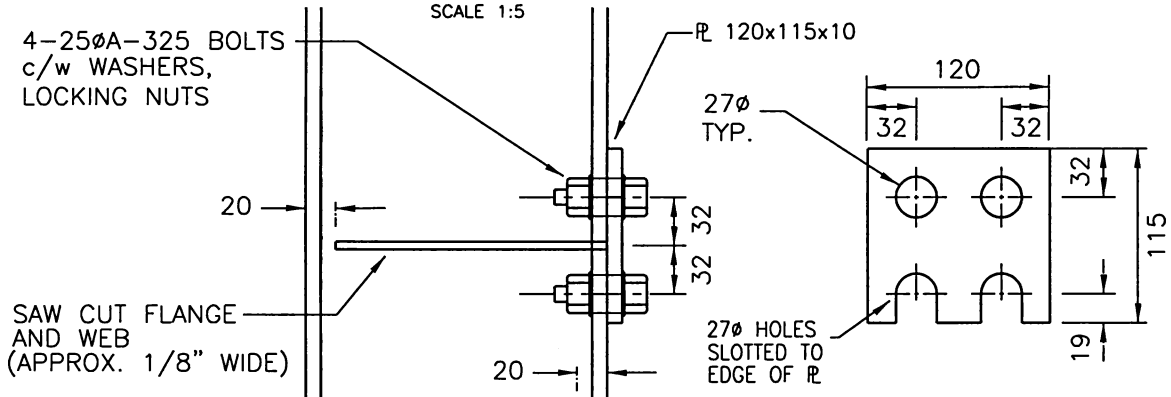
NOTES:

1. Structural steel to CSA G4021 grade 300W.
2. Weld electrode to CSA W481, E70-XX
3. Fabrication and erection of structural steel to CSA S16.
4. All structural steel to be galvanized.



**DETAIL**

SCALE 1:5




D:\WORKING\102\0017\1020017015R001.DWG LAYOUT1.LYT 2003-05-06 08:34 BY ISRECANH

| REVISIONS |  |
|-----------|--|
| 1         |  |
| 2         |  |
| 3         |  |

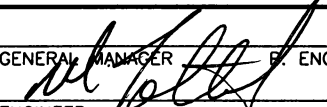
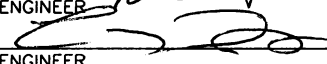
DRAWN BY       RPH        
 DATE       MAY 06 2003      

CHECKED BY                       
 DATE                             



**City of Saskatoon**  
 Infrastructure Services Department

I-BEAM FOR  
 MEDIAN GUIDESIGN

| APPROVED   |  |
|--|--|
| <br>GENERAL MANAGER P. ENG. |  |
| <br>ENGINEER                |  |
| SCALES :<br>HOR. 1:7.5 VERT.   |  |
| PLAN NO. 102-0017-015r001  |  |