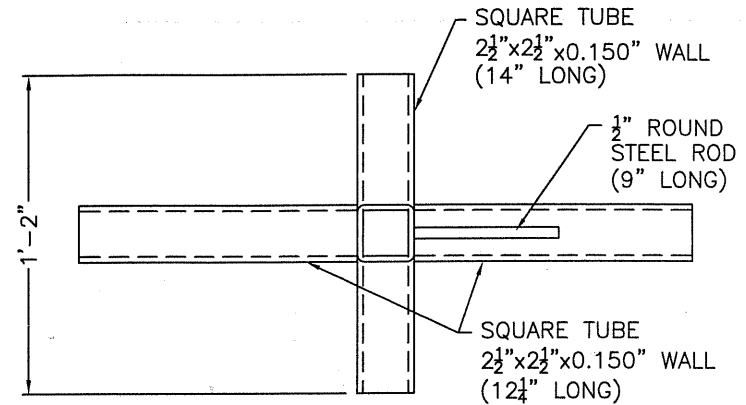


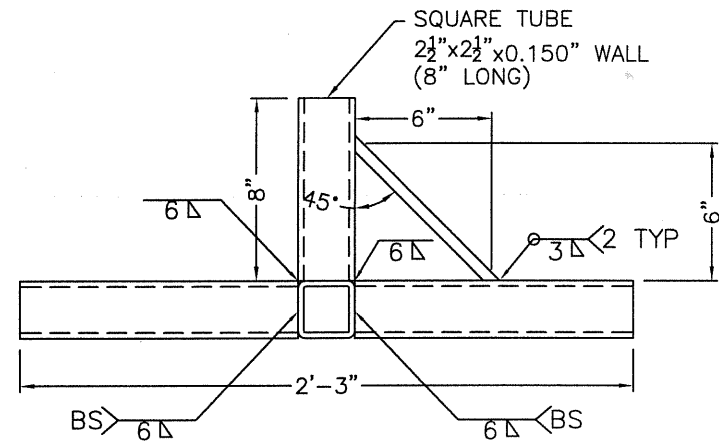
TEMPORARY SIGN BASE ASSEMBLY

LIST OF MATERIALS:
(PER ASSEMBLY)

- 2 - $2\frac{1}{2}$ "x $2\frac{1}{2}$ " x 0.150" WALL x $12\frac{1}{4}$ "
- 1 - $2\frac{1}{2}$ "x $2\frac{1}{2}$ " x 0.150" WALL x 14"
- 1 - $2\frac{1}{2}$ "x $2\frac{1}{2}$ " x 0.150" WALL x 8"
- 1 - $\frac{1}{2}$ " x 9" STEEL ROD



TOP VIEW



FRONT VIEW

REVISIONS	
1	ADDED MTRL LENGTHS
2	
3	
DRAWN BY CJP	
DATE JANUARY 5, 2007	
CHECKED BY	
DATE	



**City of
Saskatoon**
Infrastructure Services Department

TEMPORARY SIGN BASE
HSS Tube A500 Grade C

APPROVED	
GENERAL MANAGER	P. ENG.
ENGINEER	
ENGINEER	
SCALES:	HOR. NTS
PLAN NO. 102-0017-031r002	