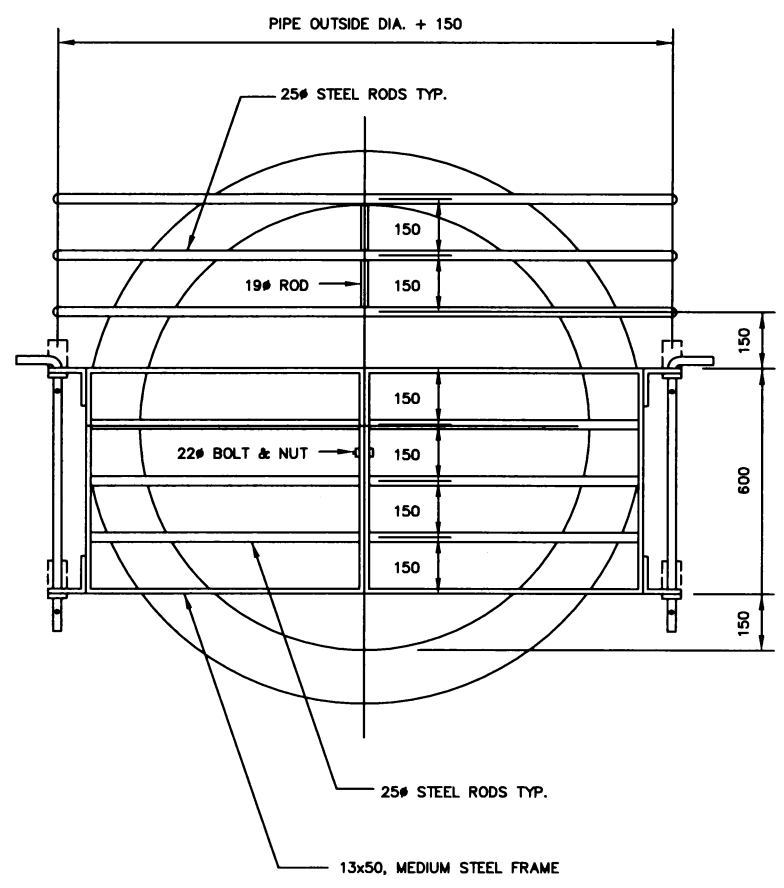
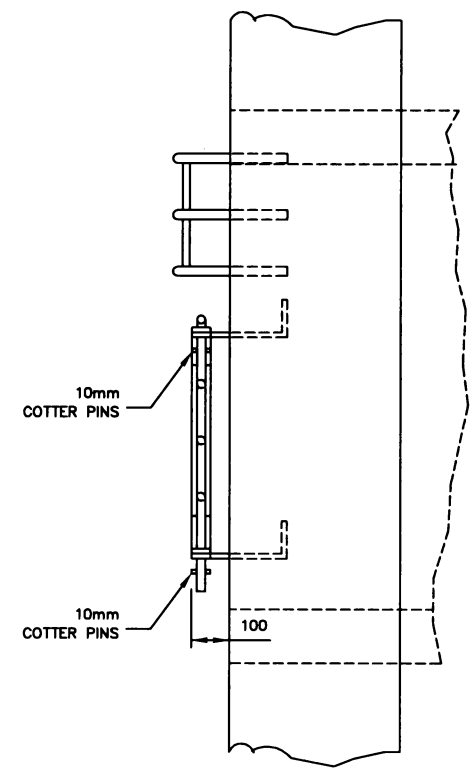


TOP VIEW

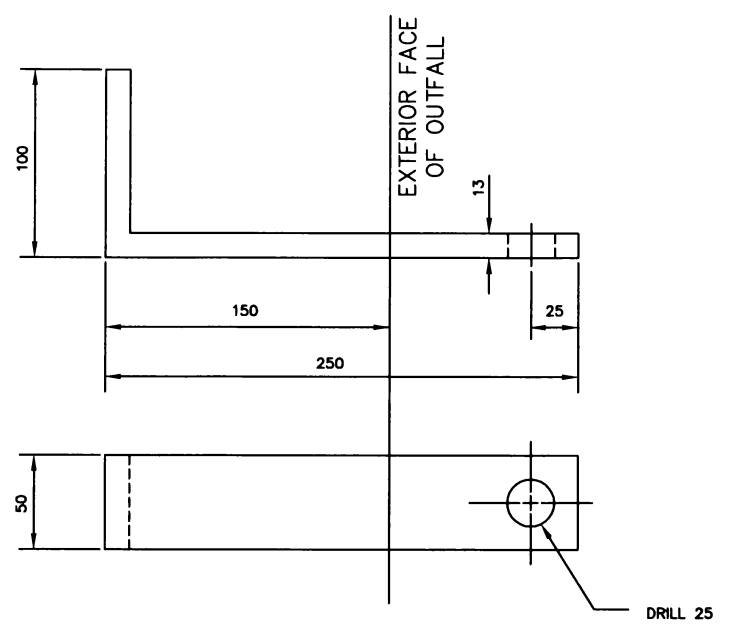


FRONT VIEW

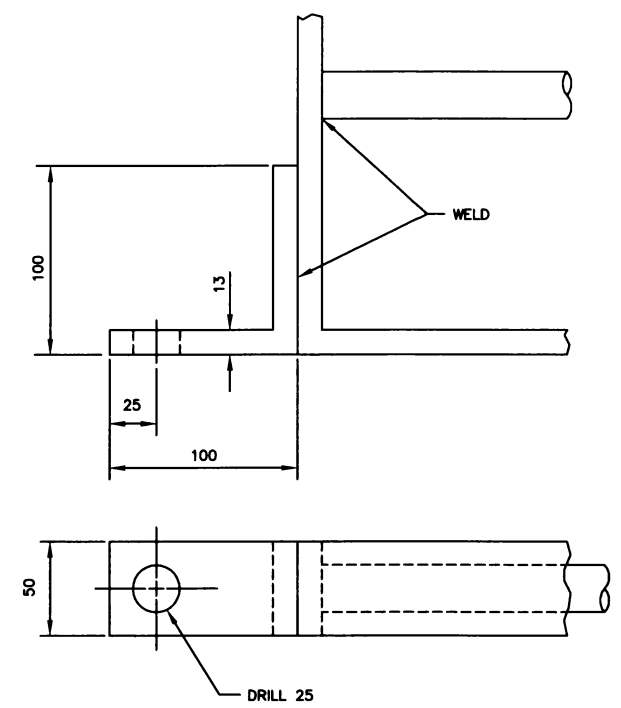
PIPE DIAMETER	1350	1500	1800
# OF RODS (FIXED)	3	4	6



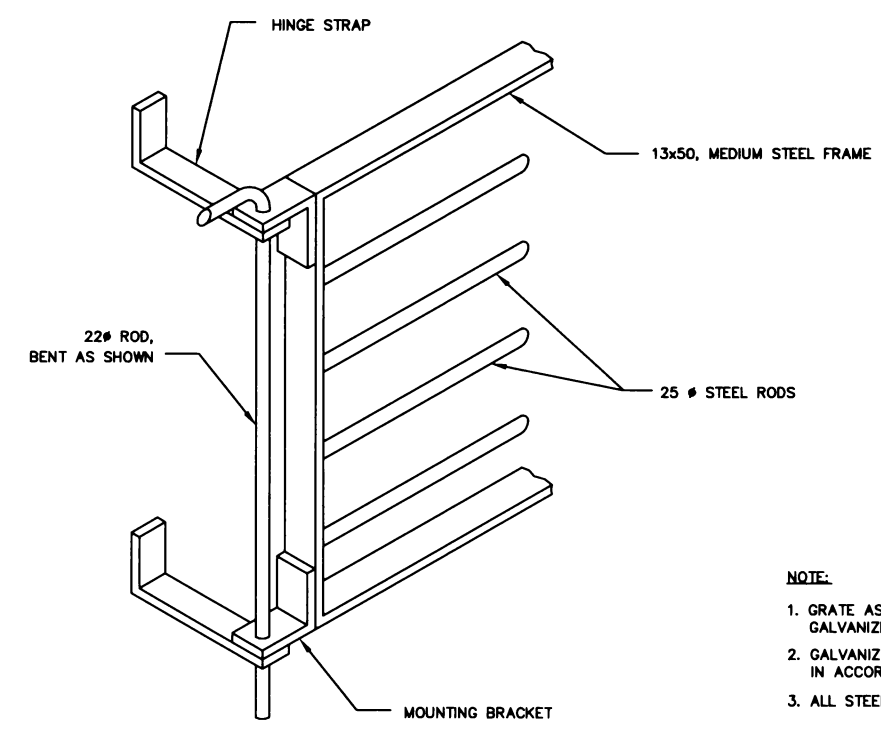
SIDE VIEW



HINGE STRAP
(4 REQUIRED)



MOUNTING BRACKET
(4 REQUIRED)



ASSEMBLY

- NOTE:
1. GRATE ASSEMBLY SHALL BE HOT DIP GALVANIZED AFTER FABRICATION.
 2. GALVANIZING SHALL BE 56.8 g ZINC & IN ACCORDANCE WITH CSA SPEC. G164-1965.
 3. ALL STEEL SHALL BE A.S.T.M. A-36 MIN.

ALL DIMENSIONS IN MILLIMETERS UNLESS OTHERWISE NOTED

11					
10					
9					
8					
7					
6					
5					
4					
3					
2					
1	BASE PLAN				
	DESCRIPTION	DATE	NO.	REVISIONS	DATE BY

STAMP	MUNICIPAL ENGINEERING	PUBLIC WORKS
	<i>A. Boyle</i>	
ENGINEER	ENGINEER	ENGINEER
ENGINEER	ENGINEER	ENGINEER
DRAWN BY	DRAWN BY	DRAWN BY
DATE	DATE	DATE
CHECKED BY	CHECKED BY	CHECKED BY
DATE	DATE	DATE



GRATING FOR CONCRETE ENDWALL
PIPE DIAMETER 1350mm TO 1800mm

GENERAL MANAGER	P. ENG
DATE	
SCALE: HOR. 1:40	SHEET NO.
VERT.	
PLAN NO.	102-0018-002r001