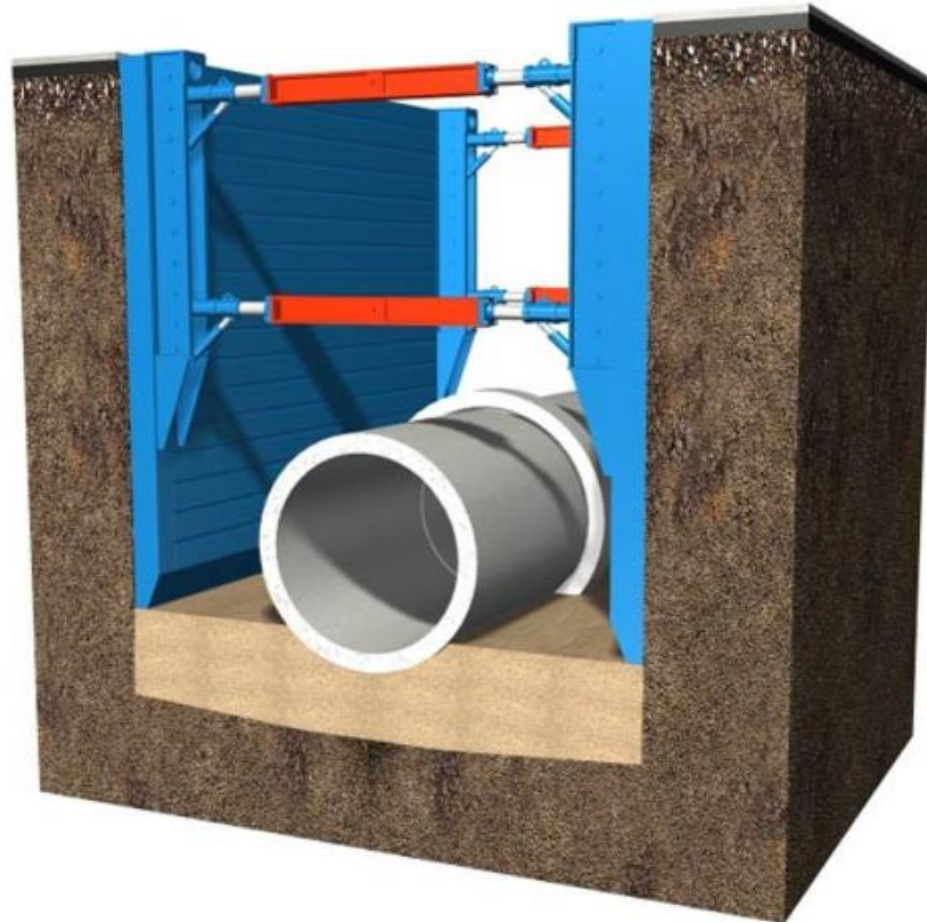


Water Main Rehabilitation

Construction in your Neighbourhood

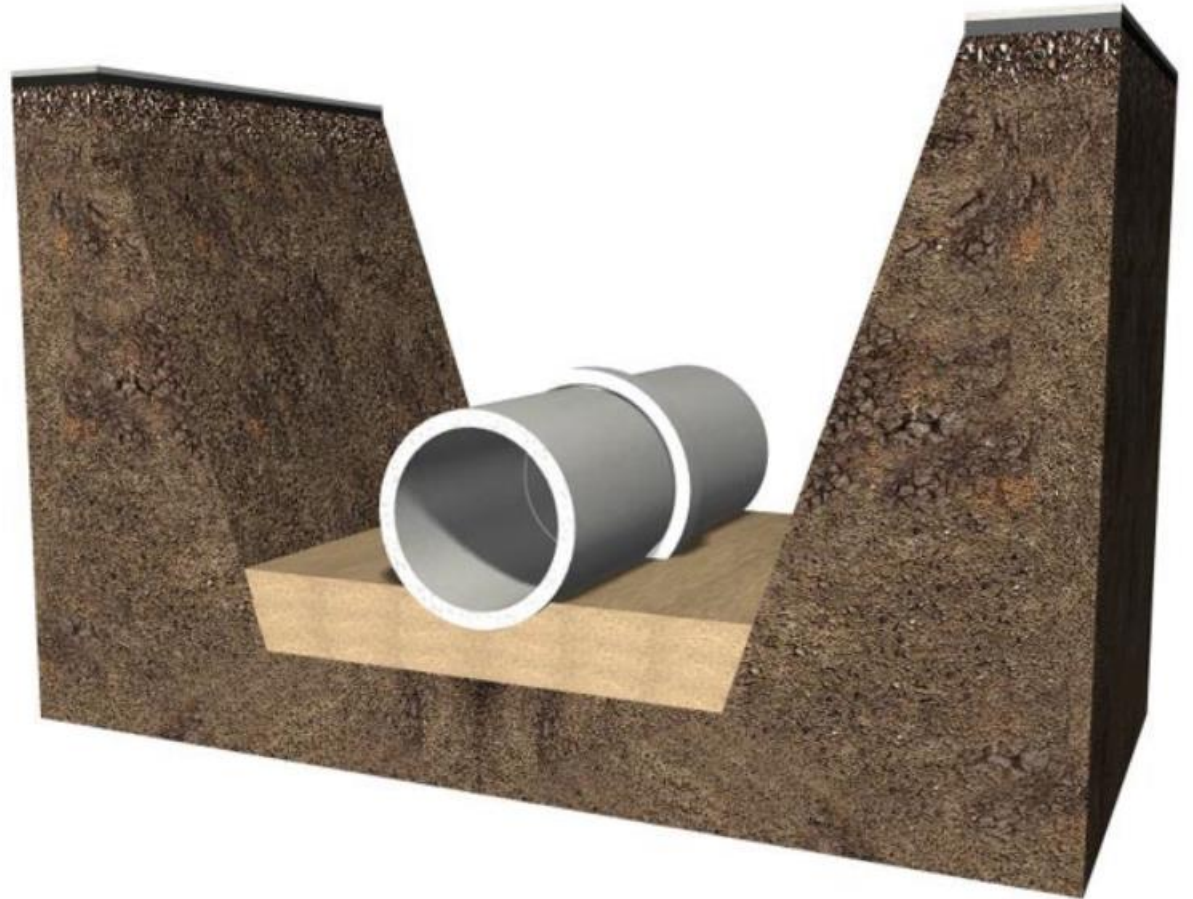
Water Main Rehabilitation Open Cut Trench Installation

Trench Box Method (vertical Sides)



Methods Of Open Cut Excavation

45 degree Sloped Sides



What will be the restriction in front of my house?

- During construction the public are required to stay outside of the work zone. The work zone will be clearly designated on site by 6ft high fencing around the live construction zone and pedestrian barriers and signage round the work zone.
- Although your street will only have an open excavation in place for a short distance at any one time, the street will have loaders, excavators and pipe laying equipment operating within the construction zone. Midblock residents may have to walk to the end of the block before crossing the street.
- Sidewalks will remain open during the work although some disruptions during connection replacements are inevitable

Project Order of Work (1 of 2)

- Temporary water set up
- Road gets closed
- Water main installation begins
- Restoring the Excavations
- Temporary Water Supply is Removed

Project Order of Work (2 of 2)

- Street may reopen for a short time
- Concrete work starts
- Roadwork equipment arrives on site
- Paving of new road surface
- Road reopens
- Site Cleanup

Traffic Restrictions & Detours

- Street closures
- No thru-traffic on some streets
- Speed restrictions
- Increased stop and yield points
- Obey additional signage
- May be increased traffic on your street to accommodate detours

Parking Restrictions

- Residents may not have access to the front of their house
- Alternative parking options may be available at some locations
- Phasing the construction may be applied at some locations

Garbage, Recycling, Leaves & Grass Collections

- Roll out collection cart on the day of collection
- Usual collection point
- Collection will be organized from there

Temporary Water Supply

- Made up of 3 components:
 1. Temporary Water Supply (hydrant)
 2. Temporary Water Main (pipes)
 3. Temporary House Connections (hoses)

Temporary Supply (hydrant)



Typical set up. Hydrant adjacent to the construction limit will be used as water resource during construction

Temporary Water Main (pipes)



Pipe sections that will be connected together to form a temporary water main along the sidewalk. The contractor will make a ramp over the pipe at crossing with driveway or back-ally using appropriate materials

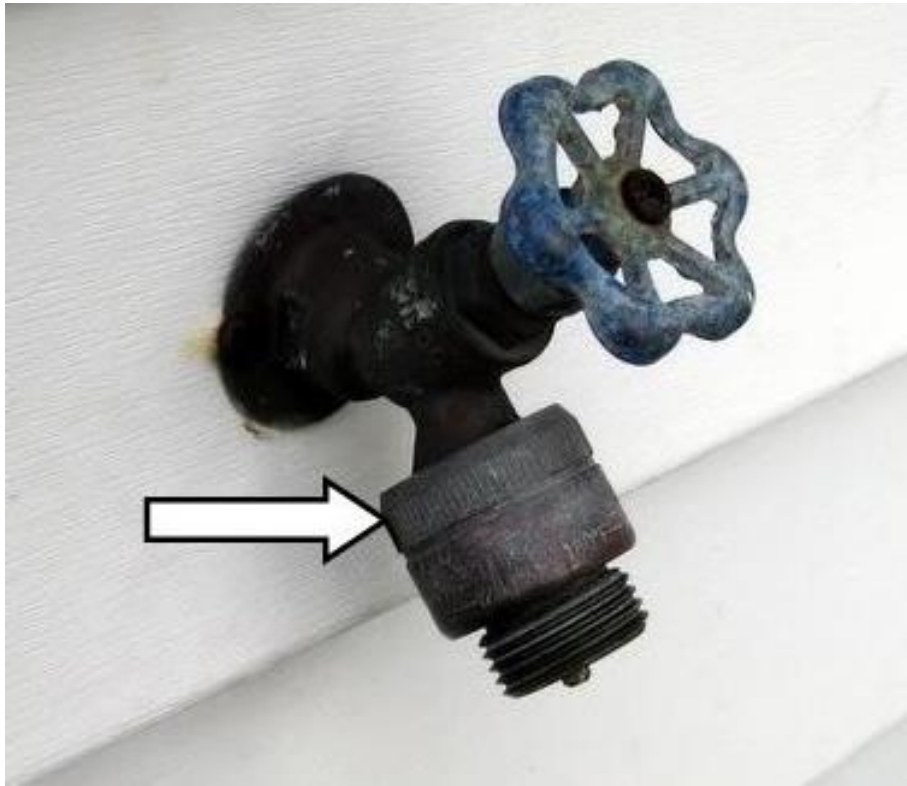
Temporary House Connection (hoses)



Temporary House Connection

- 1” hose will be connected to each house to supply the resident with water during construction period
- Contractor will contact the homeowner to arrange time to hookup the temporary water service. Which will be hooked directly outside tap
- Outside taps that have a backflow prevention device will not accept the temporary water (which you will see in next slide)
- Therefore the backflow preventer will have to be removed/disabled by the homeowner (we recommend you use a licensed plumber)
- This will also require access to your home to bypass the water meter

Outside Taps with Backflow Preventers



Road Restoration









Contact Information

- Contact our 24-Hour Customer Service Centre at CSC@saskatoon.ca or [306-975-2476](tel:306-975-2476) for general inquiries.
- For further information please visit our website at www.saskatoon.ca/watermain
- Contact Saskatoon Water Laboratory at [306-975-2534](tel:306-975-2534) with inquiries related to water quality testing and lead levels in drinking water.