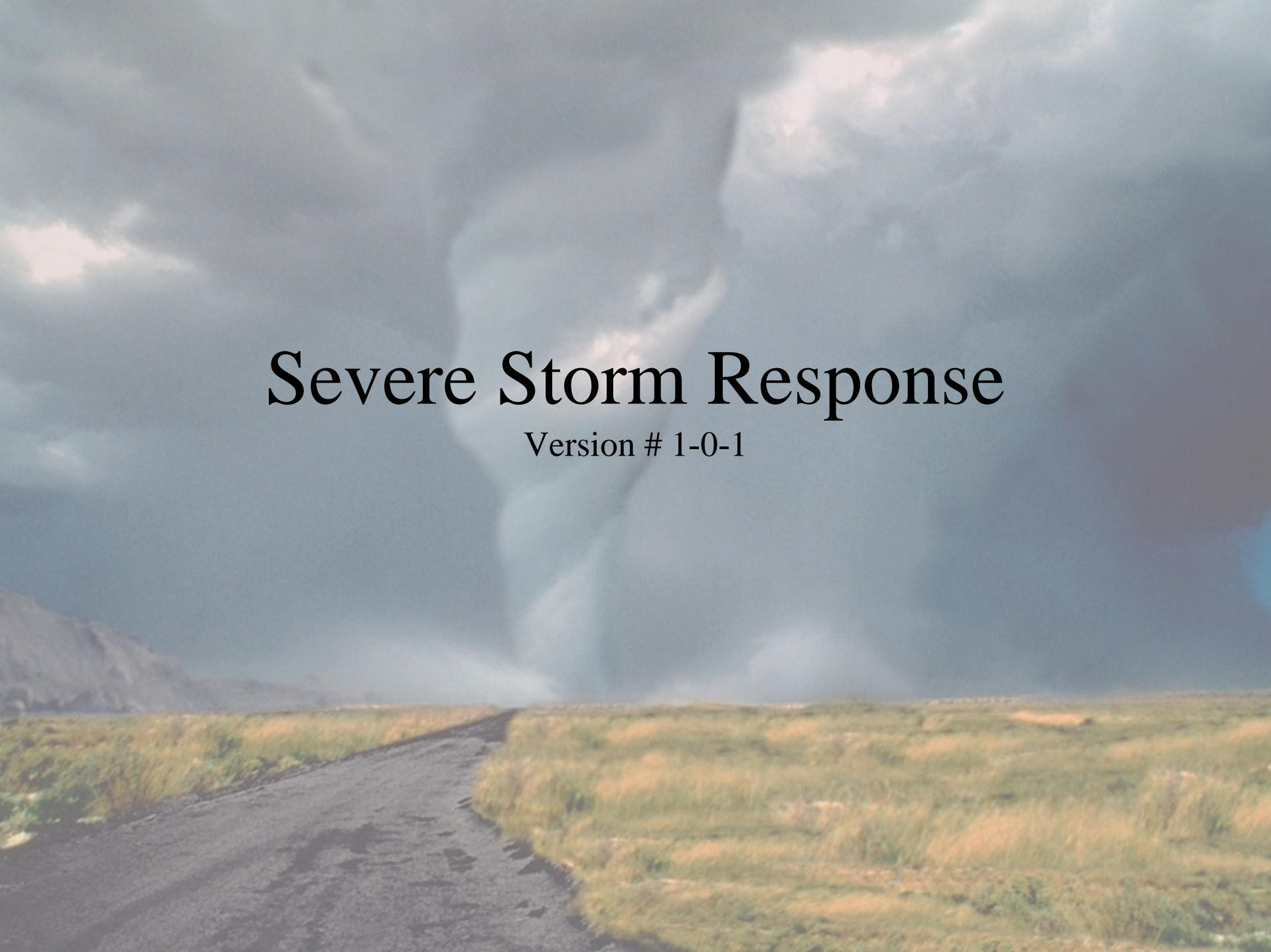


Severe Storm Response

Version # 1-0-1



Weather Warnings

- Environment Canada issues severe weather warnings, watches and advisories

 Environment Canada / Environnement Canada

[\[Français\]](#) [\[Back\]](#)

Environment Canada's Official Canadian Weather Warnings

Gjoa Haven
8:13 AM MDT Tuesday 27 April 2004

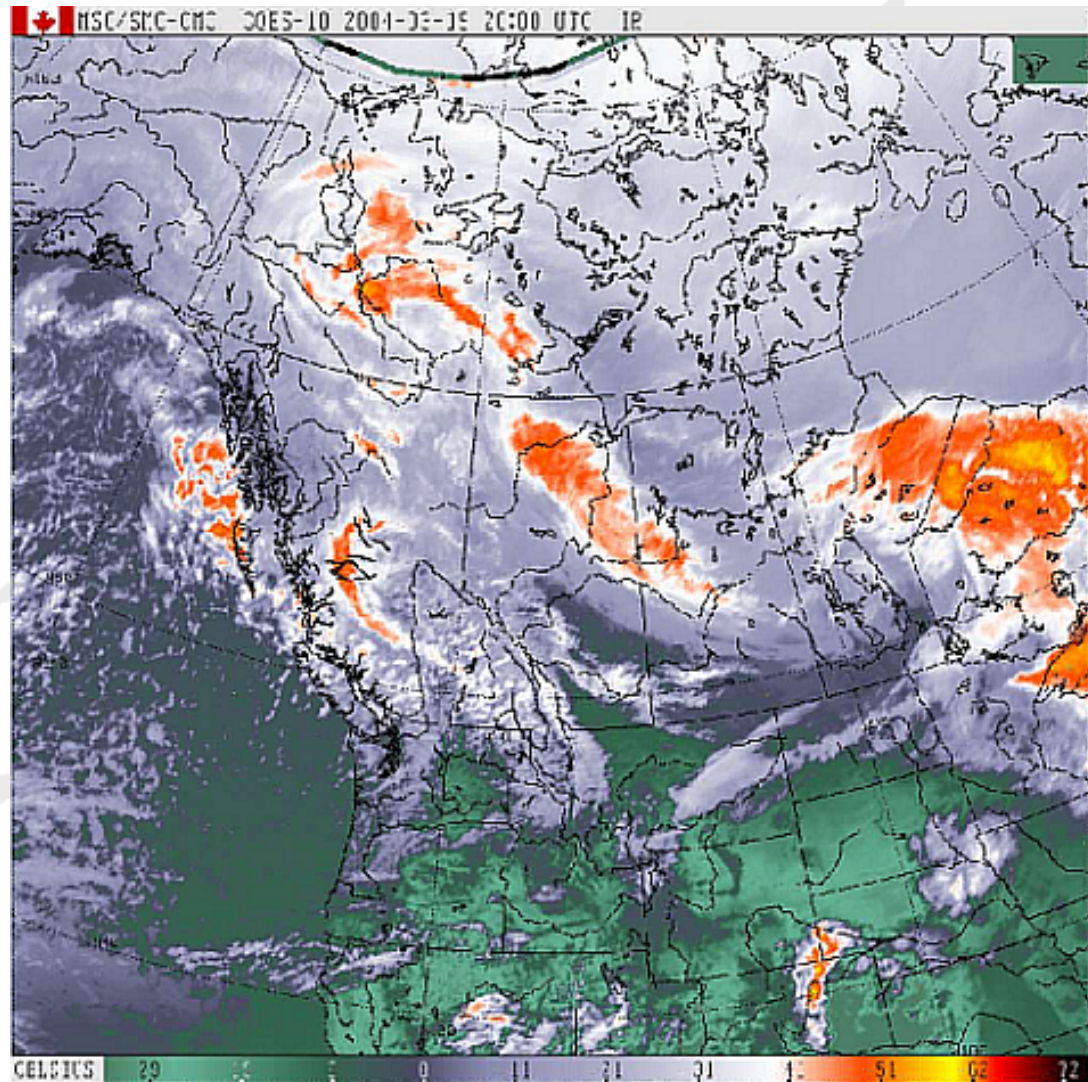
Blizzard warning for
Gjoa Haven continued
Blizzard conditions will develop near midnight at Gjoa Haven.

This is a warning that blizzard conditions are imminent or occurring in these regions. Monitor weather conditions..Listen for updated statements.

A deep low pressure system in Québec will move westward causing blizzard conditions to develop at Gjoa Haven near midnight as winds increase to north 40 gusting 60 km/h. Conditions will improve Wednesday evening as winds diminish.

Weather Watch

- Severe weather may develop.



Weather Warning

- Severe weather is occurring or will occur



Severe Thunderstorm or Tornado Warning

- Can be issued less than one hour in advance.



Weather Advisory

- Weather may cause an inconvenience or concern.



Weather Advisory

- Conditions may be favourable for severe weather.



Storm Event



Rainfall Events

- Most rainfalls don't produce flooding.



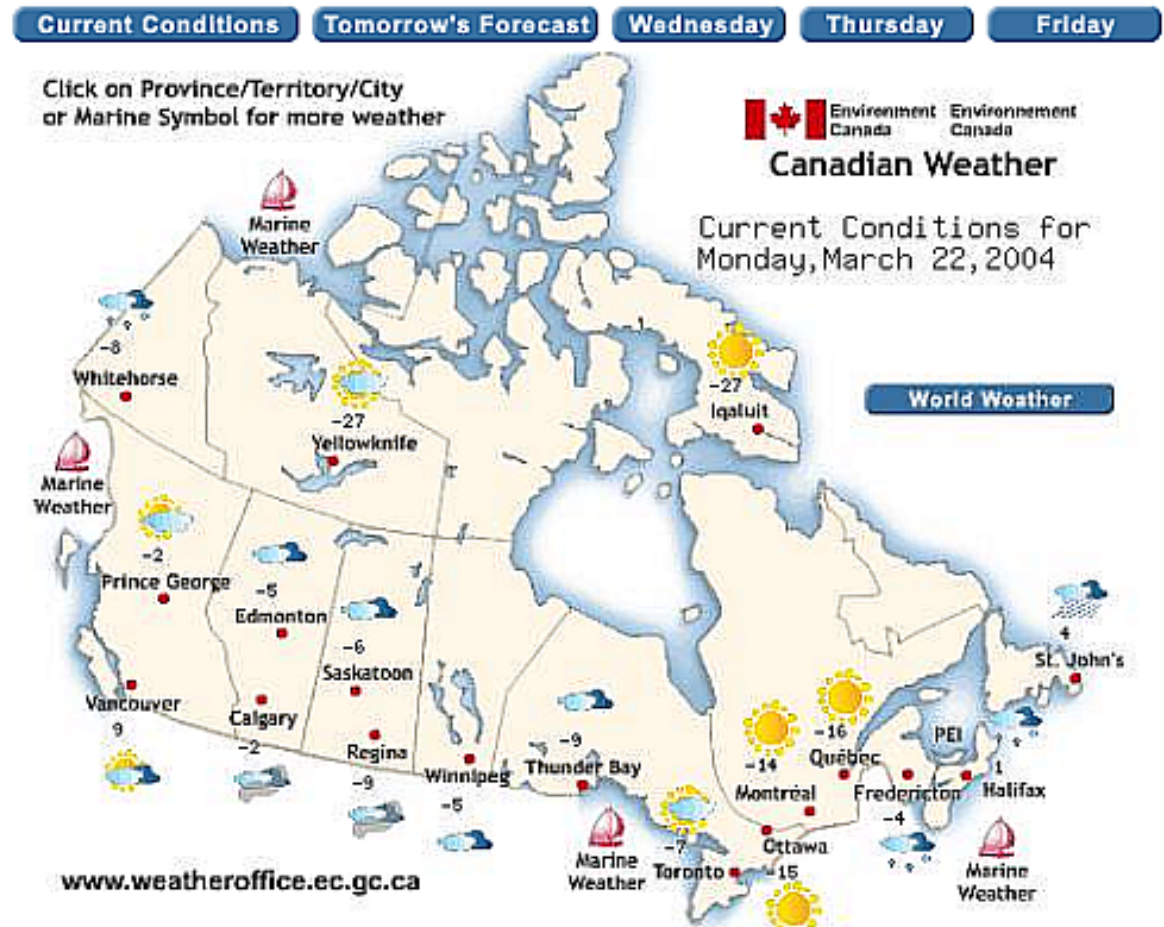
Heavy Rainfall

- Stay alert during heavy rains.



Meteorological Services

- During a storm event keep in contact with the meteorological services.



Areas Prone to Flooding

- Supervisory staff will decide whether areas prone to flooding are checked.



Checking for Flooding

- Central Dispatch should be notified of any and all flooding.



Flood Investigation

- A city of Saskatoon staff member must respond to reports of flooding.



Working in Heavy Rain

- Take care on roads during heavy rain.



Landslides

- Land slippage can be a concern during heavy rain.



Report Landslides

- Report landslides to Central Dispatch or the property owner.



Broken Trees

- Notify Central Dispatch of broken for uprooted trees.



Blocked Roads

- Clear blocked roads as soon as possible.



Confirmed Flooding



Dangerous Intersections

- The dangerous intersections must be checked when flooding has been confirmed.

WS-C02 Severe Storm Response Dangerous Intersections List #: WS-C02.03		
Extremely Dangerous Flooding Locations		
Priority	Intersection	Problem
1	Idylwyld -Circle Dr. under the overpass on Idylwyld, and The West bank ramp down on to Idylwyld south bound.	Severe Ponding
2	19 th and Idylwyld under the overpass	Severe Ponding
3	33rd St. between Ave. K to L.	Severe Ponding and loss of Manhole lids
4	33 rd and Circle Dr. overpass	Severe Ponding
5	Rusholm Rd. by E.D.Feehan School	Severe Ponding and loss of Manhole lids
6	Laurier- Conf. Dr. and Bennett-Conf. Dr.	Severe Ponding and loss of Manhole lids
7	Louise- East place (Preston from Louise to Taylor)	Severe Ponding and loss of Manhole lids
8	Cherry St.	Severe Ponding and loss of Manhole lids
9	George Rd.- Wedge Rd.	Severe Ponding and loss of Manhole lids
10	Taylor-Broadway	Severe Ponding and loss of Manhole lids
11	Cascade between William and Broadway	Severe Ponding and loss of Manhole lids
12	Cascade-Dufferin	Severe Ponding and loss of Manhole lids
13	Lansdowne Ave. and 1 st St. East	Severe Ponding and loss of Manhole lids
14	Taylor St. and Coy Ave.	Severe Ponding and loss of Manhole lids
15	Idylwyld Dr. North, South of Northridge Dr. (50m North of lift station)	Severe Ponding and loss of Manhole lids

Underpasses

- Closely monitor all underpasses.



Circle Dr. & Idylwyld Dr Monitoring

- There are monitors in the storm sewer lift station at this intersection.



Underpass Flooding

- Notify Fire and Protective and Police Services.



Close Intersections

- Close all intersections which are flooded.



Hidden Hazards

- Flooded intersections have hazards such as open manholes.



Open Manholes

- Open manholes can be difficult to see.



Storm Sewer Rescue

- Are next to impossible during a sever storm event.



Closing Intersections

- It is very important to close the flooded intersections.



Closing Intersections

- The sign shop and Police Services can assist.



Flood Mitigation

- Contact Central Dispatch or whom ever is required.



Flooded Intersections

- Staff must not leave a flooded Intersection unattended, until the intersection is closed.



Rehabilitation and Recovery



Rehabilitation

- Rectify problems caused by flooding.



Sewer Blockages

- The flooding may be due to a blockage.



Vac-Trucks

- Sewer vac-trucks can clear debris from the storm sewer.



Sweepers

- Sweeper can clear mud and debris from streets.



Broken Trees

- The Parks Branch will remove any broken trees.



Damaged Power lines

- Electrical Systems Branch or SaskPower will repair damaged power lines.



Requests for Assistance

- Requests for assistance should have approval.



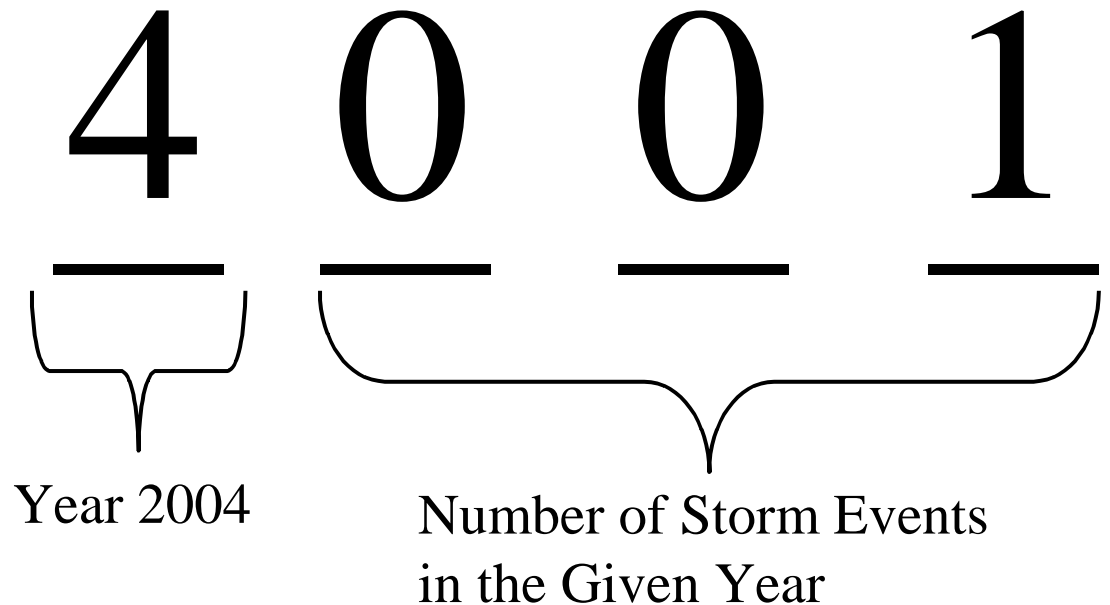
Documentation



Job and Location Numbers

1

- Use Job # 50571 and the location # posted in Central Dispatch.



Preliminary Flood Response Form

- Must be filled out for every flooded location that city staff responded to.

Preliminary Flood Response Form #: WS-C02.04

Name:

Date:

Time:

Location of Flooding:

Time for Flood to Subside:

Type of Catch Basin (Describe the shape and size of grate and frame):

Did Manhole lids come off? :

If they did, how many and which ones (include GIS #):

Severity of Flood:

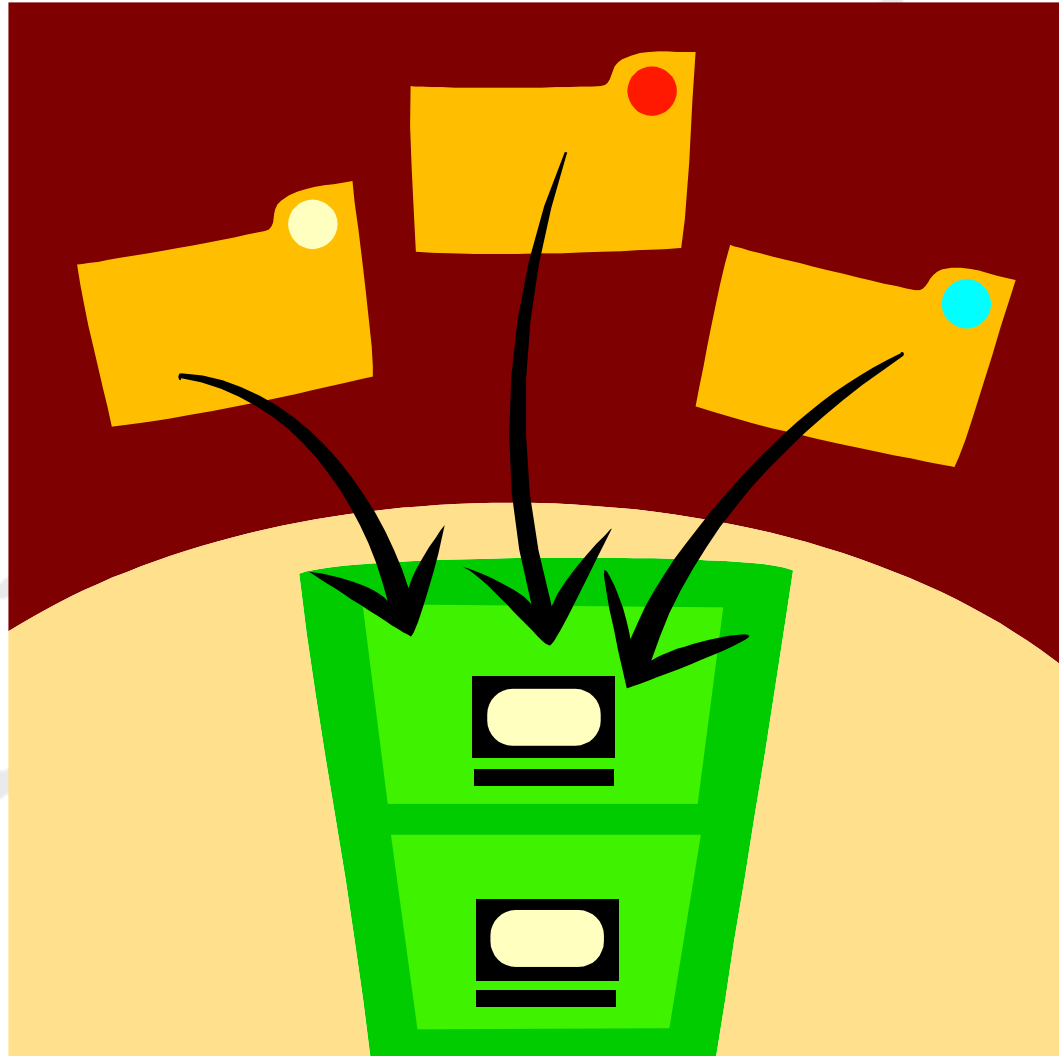
Estimate area covered by flood water, in terms of number of properties affected:

Sketch the general lay out of the flooded intersection, and show the high water mark:



File Paperwork

- File paperwork appropriately.



A dramatic landscape photograph featuring a dark, stormy sky with heavy, dark clouds. A bright, white, funnel-shaped cloud formation, resembling a microburst or a small tornado, descends from the center of the sky towards the horizon. The foreground consists of a dark, wet, gravelly path that leads from the bottom left towards the center of the frame. The path is flanked by green and yellow grass. In the background, a range of dark, rugged mountains is visible on the left side. The overall mood is ominous and powerful.

Follow Up

Facilitate Follow Up Activities

- The Public Works Manager will appoint a staff member to facilitate follow up activities.



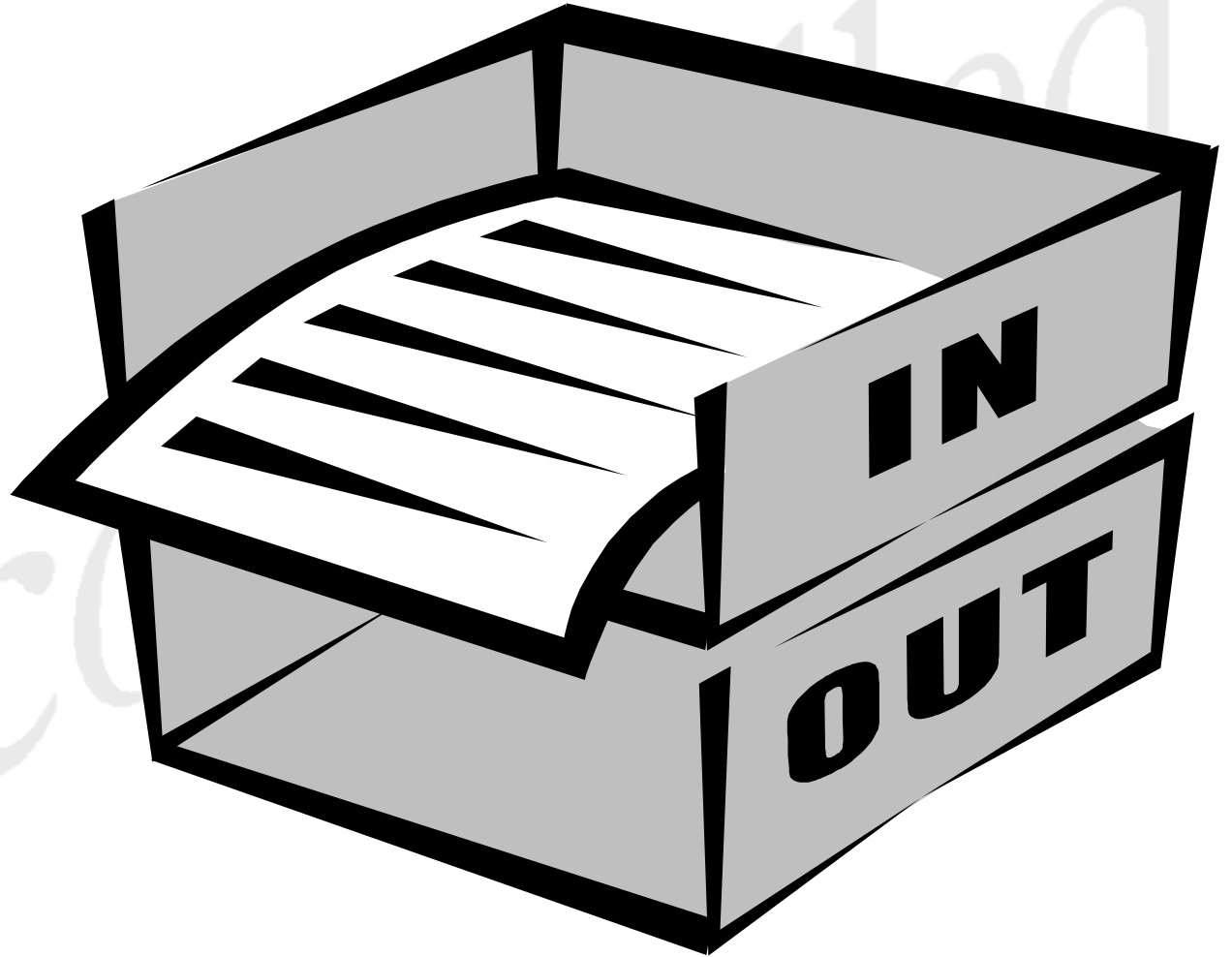
Drainage Complaints

- Complaints are handled by the Municipal Engineering Branch.



Gather Information

- The storm information should be directed to the staff member appointed to facilitate follow up activities.



Summary

- A summary report must be prepared.



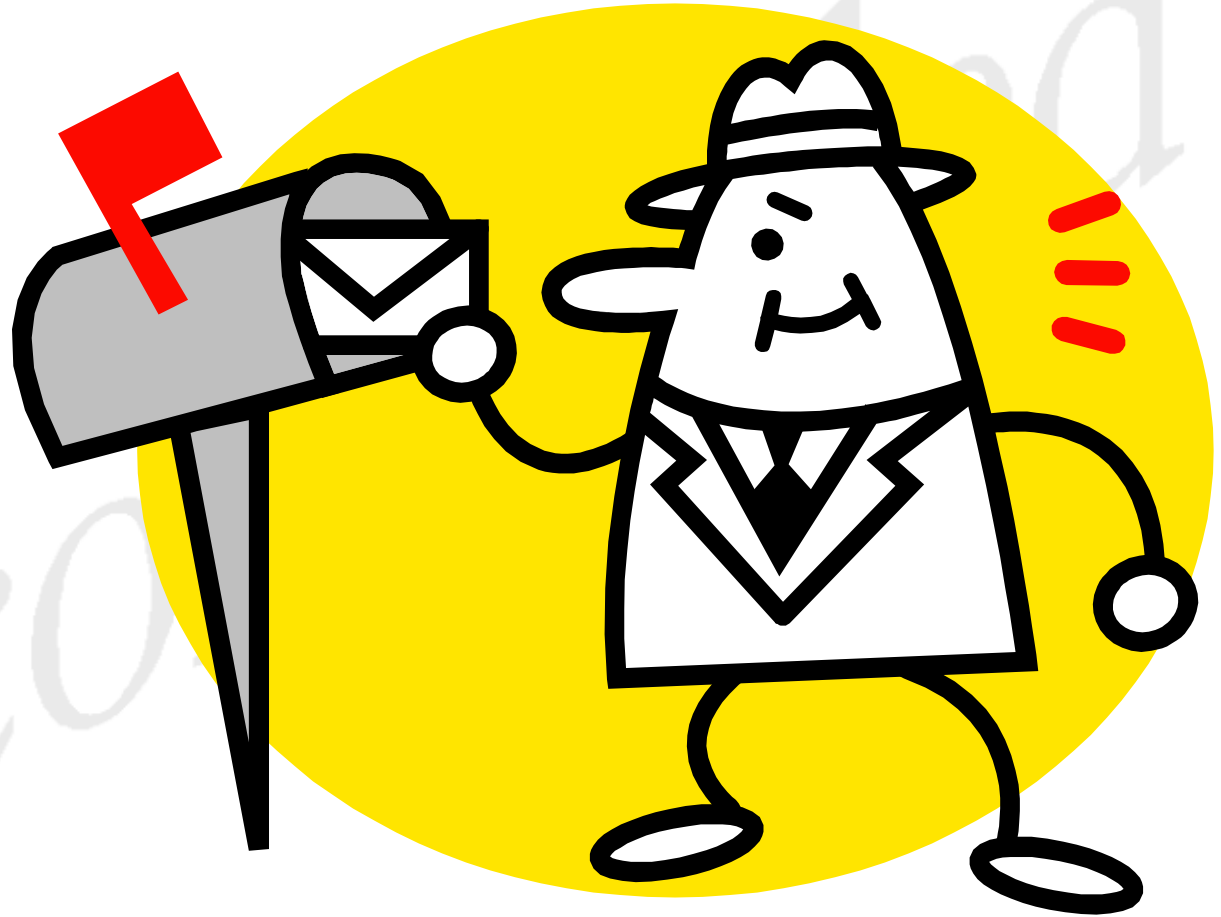
Check Lists

- Check and Update the Dangerous Intersections List.

WS-C02 Severe Storm Response Dangerous Intersections List #: WS-C02.03		
Extremely Dangerous Flooding Locations		
Priority	Intersection	Problem
1	Idylwyld -Circle Dr. under the overpass on Idylwyld, and The West bank ramp down on to Idylwyld south bound.	Severe Ponding
2	19 th and Idylwyld under the overpass	Severe Ponding
3	33rd St. between Ave. K to L.	Severe Ponding and loss of Manhole lids
4	33 rd and Circle Dr. overpass	Severe Ponding
5	Rusholm Rd. by E.D.Feehan School	Severe Ponding and loss of Manhole lids
6	Laurier- Conf. Dr. and Bennett-Conf. Dr.	Severe Ponding and loss of Manhole lids
7	Louise- East place (Preston from Louise to Taylor)	Severe Ponding and loss of Manhole lids
8	Cherry St.	Severe Ponding and loss of Manhole lids
9	George Rd.- Wedge Rd.	Severe Ponding and loss of Manhole lids
10	Taylor-Broadway	Severe Ponding and loss of Manhole lids
11	Cascade between William and Broadway	Severe Ponding and loss of Manhole lids
12	Cascade-Dufferin	Severe Ponding and loss of Manhole lids
13	Lansdowne Ave. and 1 st St. East	Severe Ponding and loss of Manhole lids
14	Taylor St. and Coy Ave.	Severe Ponding and loss of Manhole lids
15	Idylwyld Dr. North, South of Northridge Dr. (50m North of lift station)	Severe Ponding and loss of Manhole lids

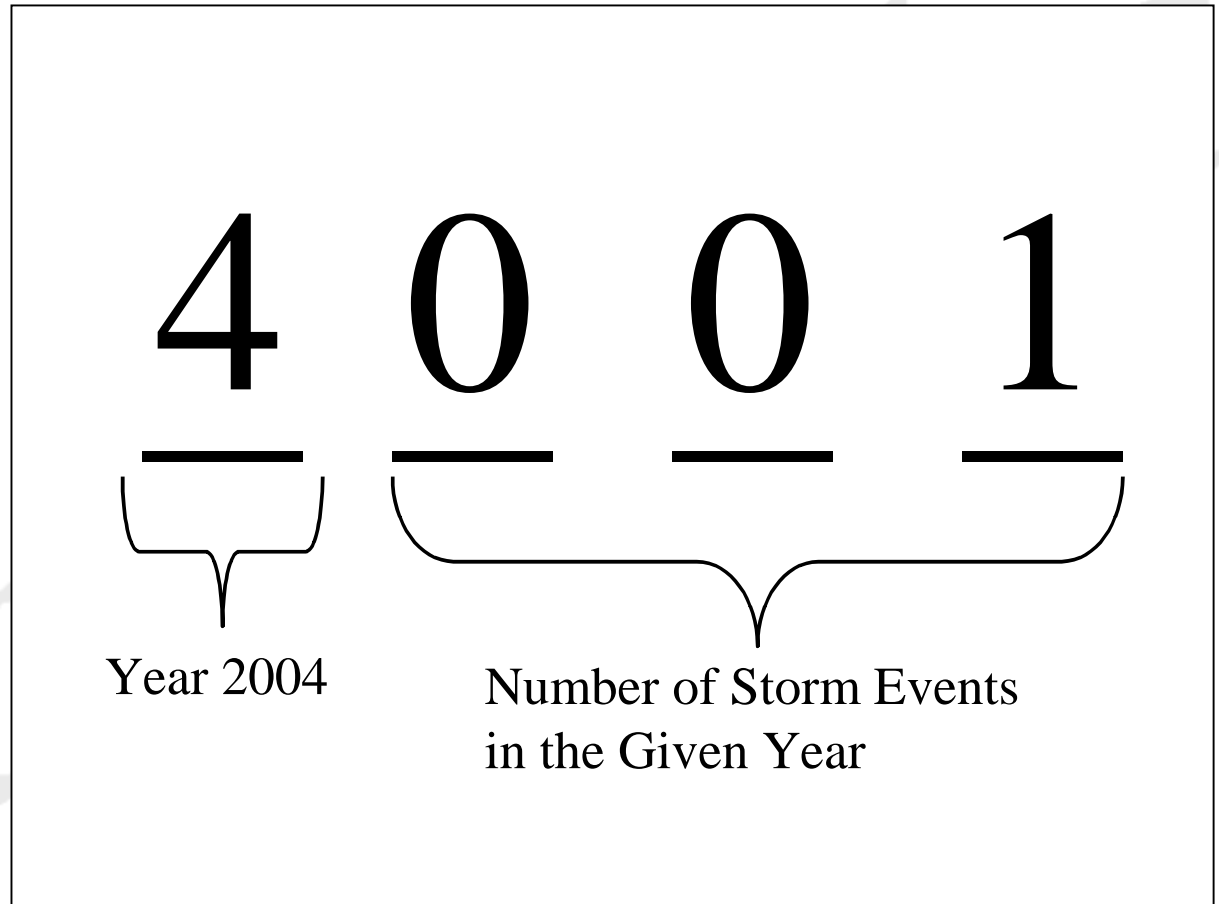
Forward Information

- Forward to the Municipal Engineering Branch, Manager of Design and Planning.



Location Numbers

- Location numbers must be changed after each storm.

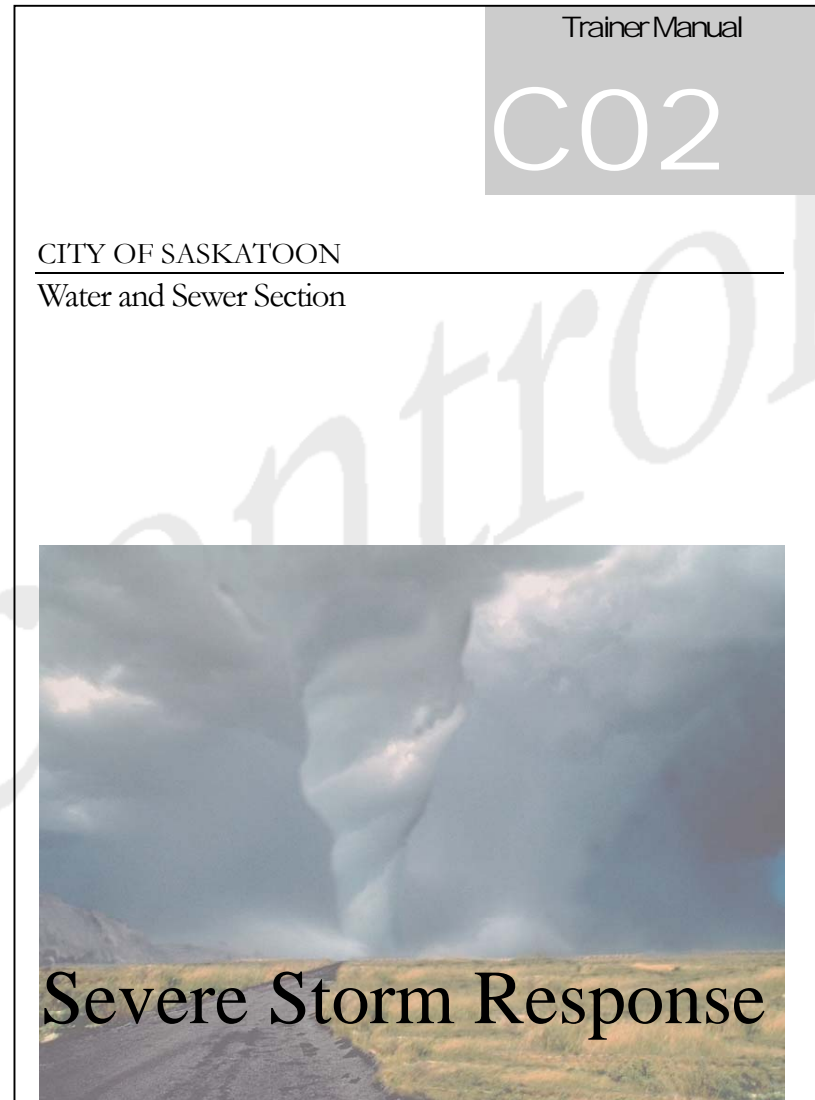


Review



Response Review

- The overall response to the severe storm will be reviewed.



Identify Problems and Solutions

- Emergency needs must be met.



Response Deficiencies

- The deficiencies in response must be corrected.



A dramatic landscape photograph featuring a dark, stormy sky with heavy, dark clouds. A bright, white, vertical streak of light or rain falls from the center of the sky towards the horizon. In the foreground, a dark, wet, gravelly path leads from the bottom left towards the center of the image. The path is flanked by green and yellow grass. In the background, a range of dark, rugged mountains is visible under the stormy sky.

Resources Required

A dramatic landscape photograph featuring a dark, gravelly dirt road that stretches from the bottom left towards the center horizon. The road is flanked by green and yellowish grass. In the background, a massive, dark, and turbulent cloud formation, resembling a giant's head or a massive storm, dominates the sky. The sky is filled with dark, swirling clouds, with some lighter patches where light breaks through. The overall mood is ominous and powerful.

People

Manager on Call (Public Works)



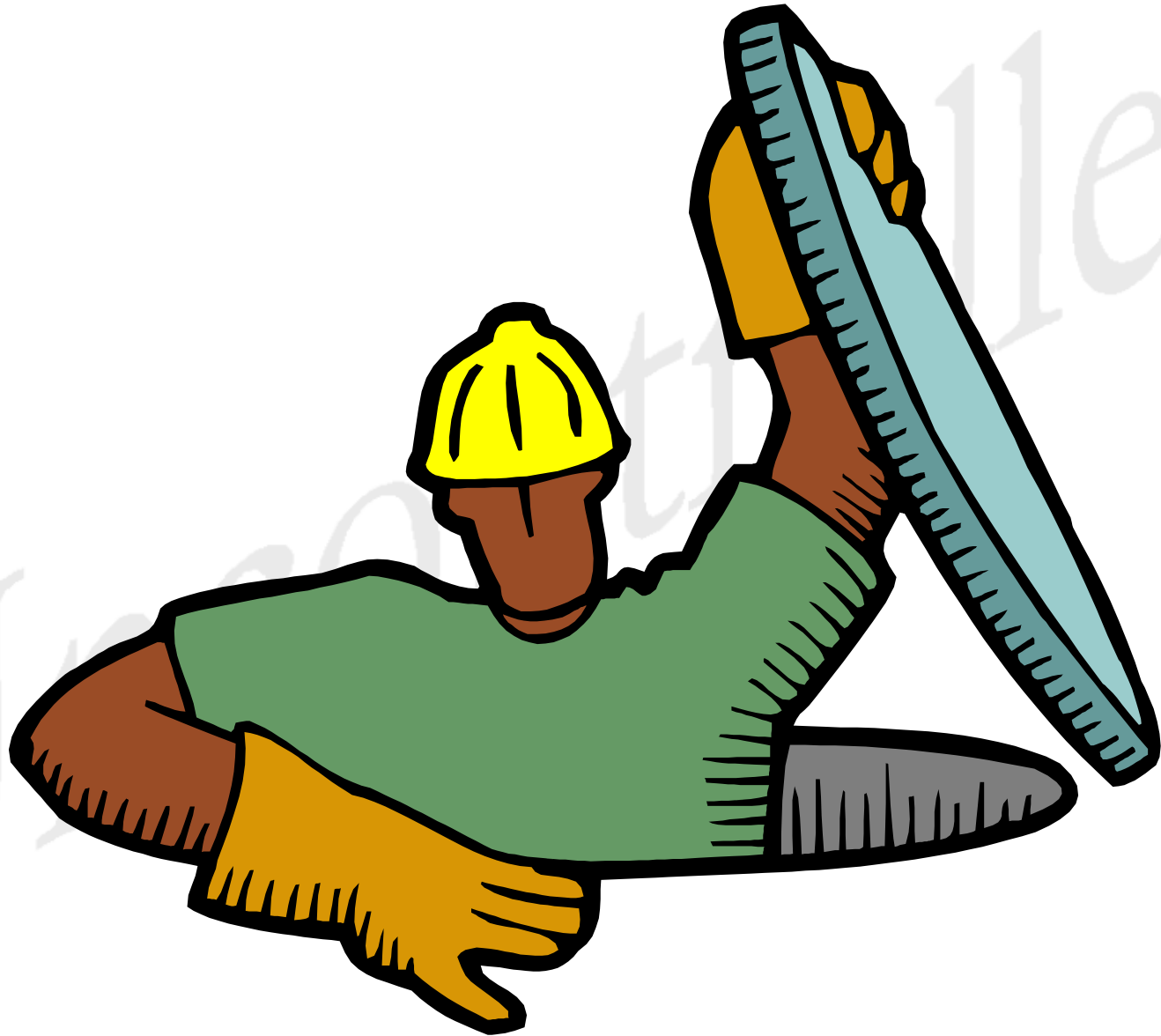
Dispatch Personnel



Wastewater Supervisor



Labourer



Staff Member Appointed to Facilitate Follow up Activities



Equipment



Vac-Truck



Sewer Bypass Pump



Wood Chipper



Traffic Control Devices

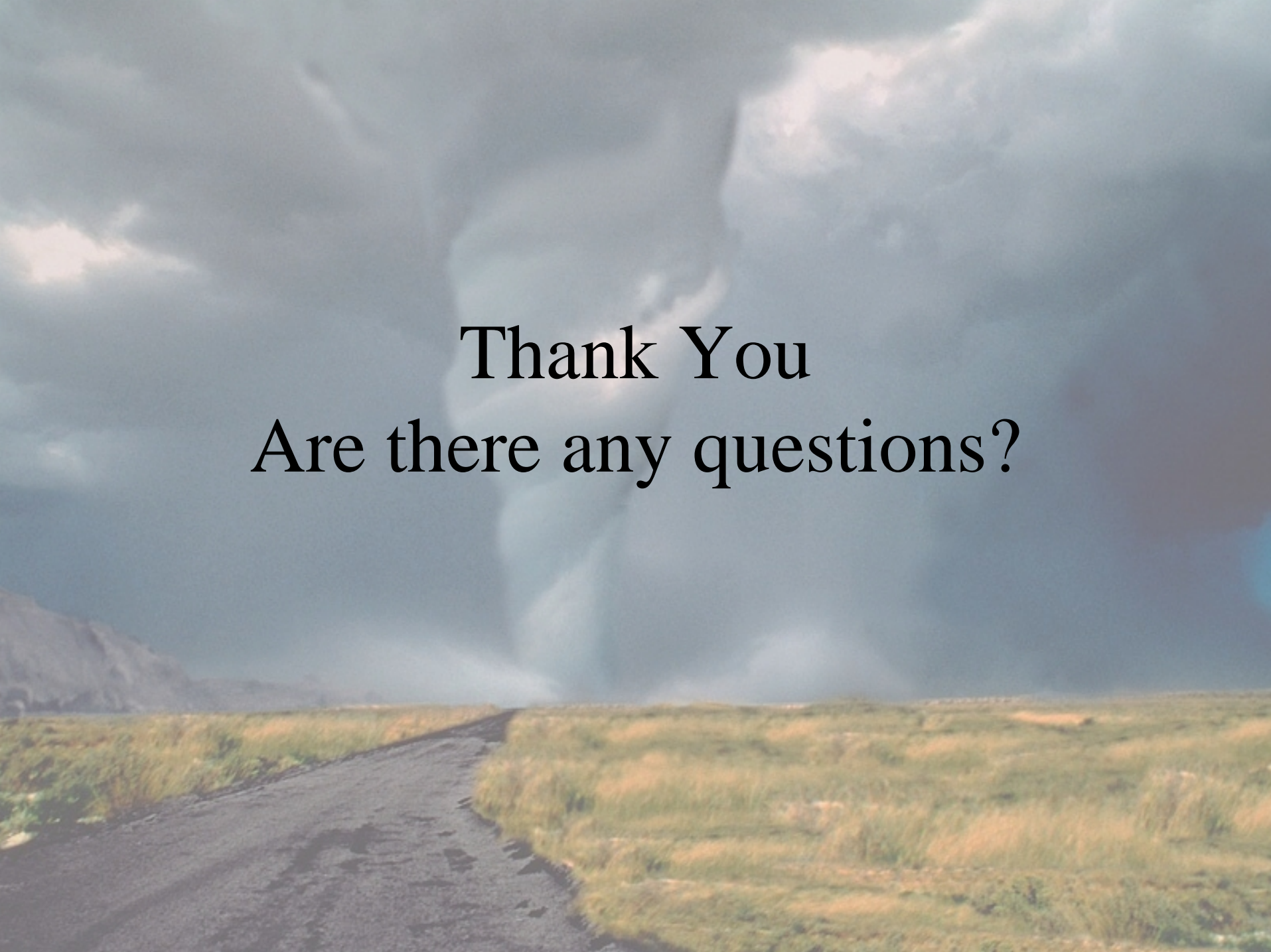


A dramatic landscape photograph featuring a dark, stormy sky with heavy, dark clouds. A bright, white, funnel-shaped cloud formation, resembling a microburst or a small tornado, descends from the center of the sky towards the horizon. In the foreground, a dark, wet, gravelly path leads from the bottom left towards the center of the image. The path is flanked by green and yellow grass. In the background, a range of dark, rugged mountains is visible under the stormy sky. The overall mood is ominous and powerful.

Material

Sandbags



A dramatic landscape featuring a dark, stormy sky with heavy, grey clouds. A winding road, possibly made of gravel or dirt, leads from the bottom left towards the horizon. The road is flanked by green and yellow grass. In the distance, a range of mountains is visible under the stormy sky. The overall mood is dramatic and atmospheric.

Thank You
Are there any questions?