

# Eastview-Nutana Suburban Centre Neighbourhood Traffic Review

Tuesday, September 25, 2018

7:00pm - 9:00pm

# Agenda

1. Welcome & Introductions
2. Traffic Management Presentation - Draft Neighbourhood Traffic Plan
3. Draft Plan (small group) Discussion - Seeking Your Input
4. Next Steps - Where From Here?
5. Question/Answers

# Having a Productive Discussion

- A Chance to Listen to Others and Share Your Ideas
- Respectful
- Orderly Participation
- Limit Repetitive Discussion

# Outline

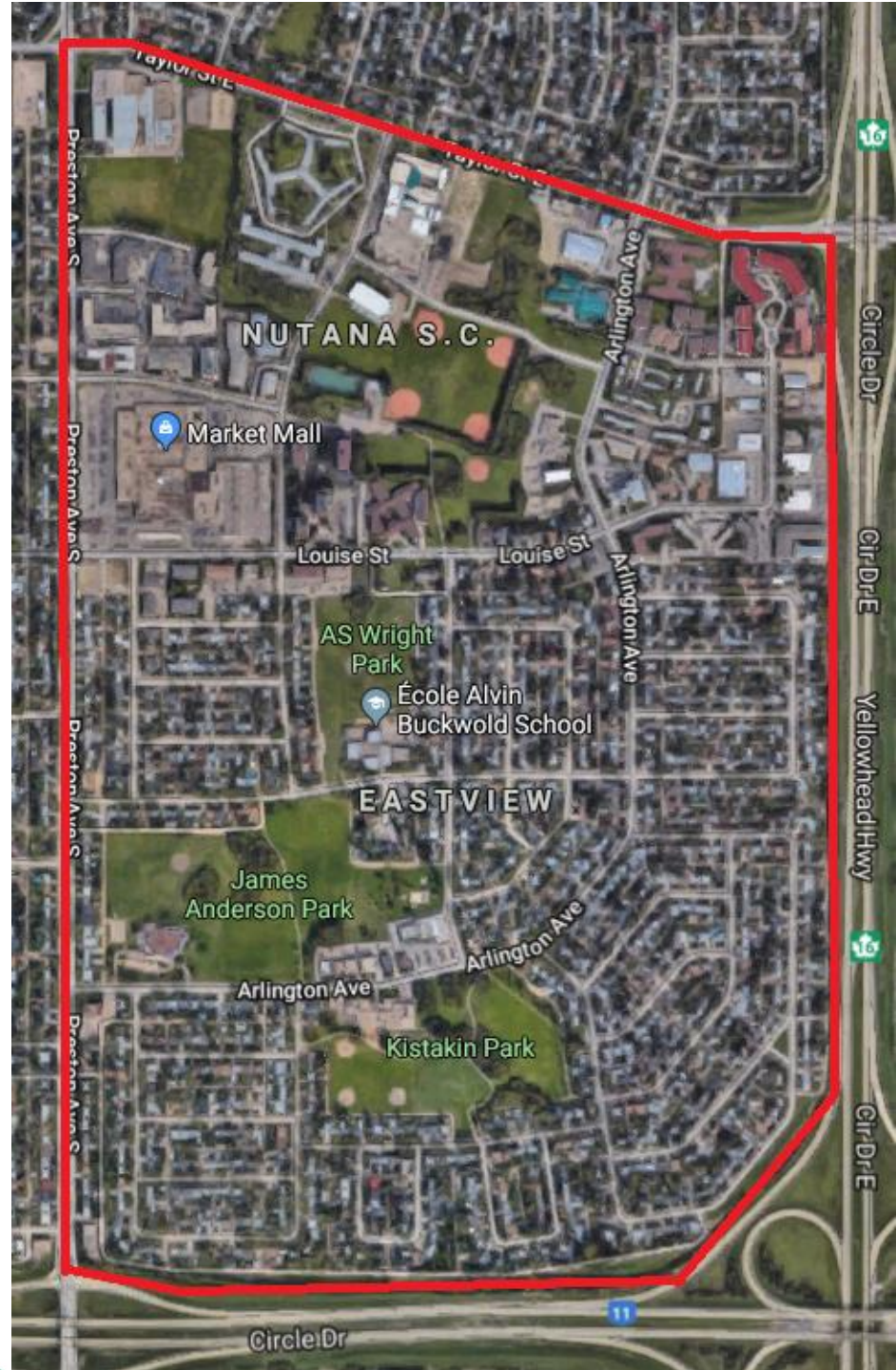
1. Neighbourhood Traffic Review (NTR) Process
2. How We Got Here
3. What We Heard
4. What We Did
5. What We Propose

# Neighbourhood Traffic Review Process

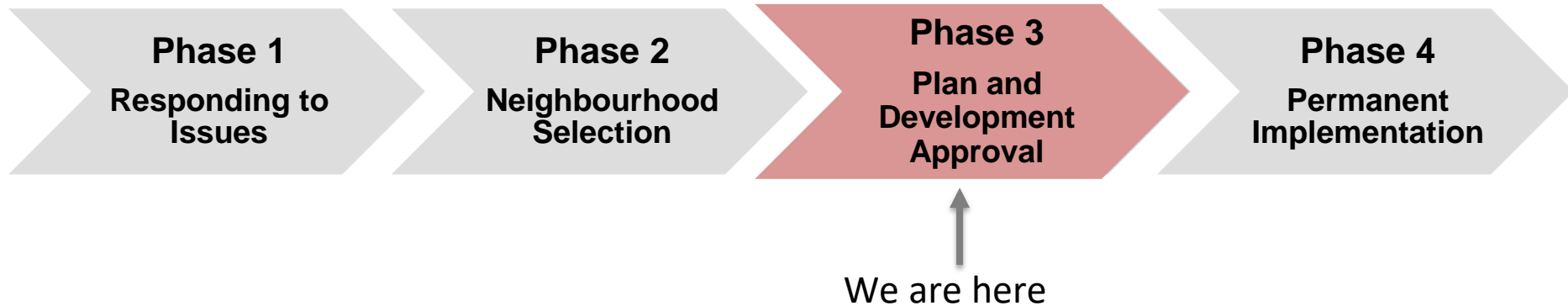
- Address neighbourhood traffic issues on local and collector streets:
  - Speeding concerns
  - Short-cutting concerns
  - Pedestrian safety
  - Intersection safety

# Eastview-Nutana Suburban Centre Study Area

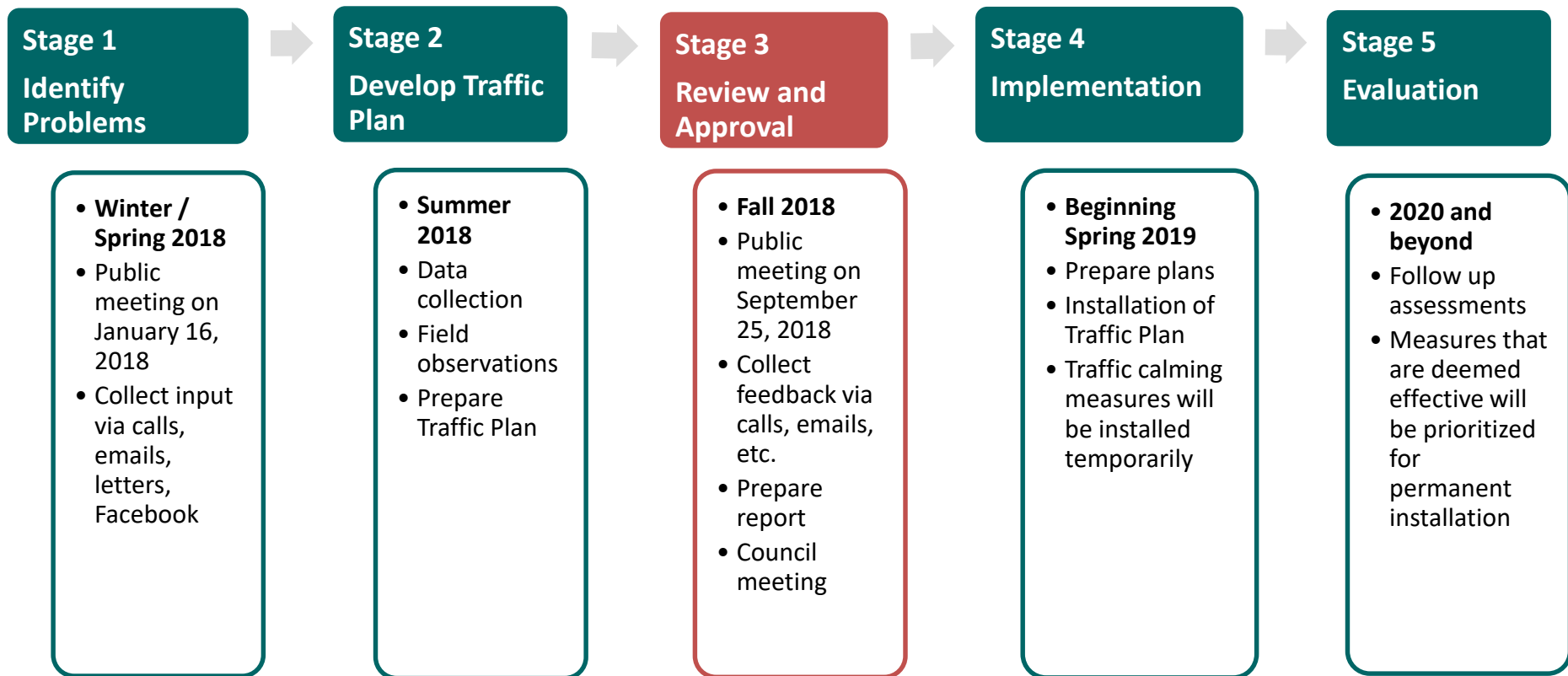
- Study Limits
  - Taylor Street
  - Preston Avenue
  - Circle Drive
- Local and collector roads



# Neighbourhood Traffic Review Process



# Neighbourhood Traffic Review Schedule





# What We Heard

## A. Speeding / Short-cutting Concerns:

- Arlington Avenue
- Louise Street
- East Drive
- 200 & 600 East Place
- 2300 Eastview
- Alley behind Eastview & 2300 Easthill
- School Zone compliance

# What We Heard

## B. Pedestrian Safety Concerns:

- East Drive & Preston Avenue
- Arlington Avenue & 3100 Eastview
- Pope John Paul II School
- Arlington Avenue & East Drive
- Arlington Avenue & Porter Street
- Louise Street & McEown Avenue
- Louise Street & 200 East Place

# What We Heard

## C. Operational Concerns:

- Louise Street & McEown Avenue

## D. Other Concerns:

- School Bus Loading at École Alvin Buckwold School

# Additional Studies / Projects

- Traffic Signals at Preston Ave & Adelaide St
  - Warranted
  - On priority list for installation
- Pedestrian Crossing at Preston Ave & East Drive
  - Does not meet our current policy for pedestrian devices
  - New process and updated policy proposed to City Council
  - Installation of an Active Pedestrian Corridor recommended
- Bus Rapid Transit (BRT) Planning
- Taylor Street & Arlington Avenue
  - Construction complete

# What We Did

- Compiled Information received:
  - Past Studies
  - Comments from initial meeting
  - Resident responses (phone calls, emails, letters)
  - Comments from online discussions
- Collected Data:
  - Traffic Studies
  - 7 Intersection / Pedestrian counts
  - 10 – 7 day traffic volume count & speed measurements
  - Collision history
- Site visits / Field Reviews
- Assessed the Issues
- Generated proposed recommendations

# What We Propose

- Median islands
- Curb extensions
- Standard & Zebra crosswalks
- Speed display board



# Median Island





# Curb Extensions





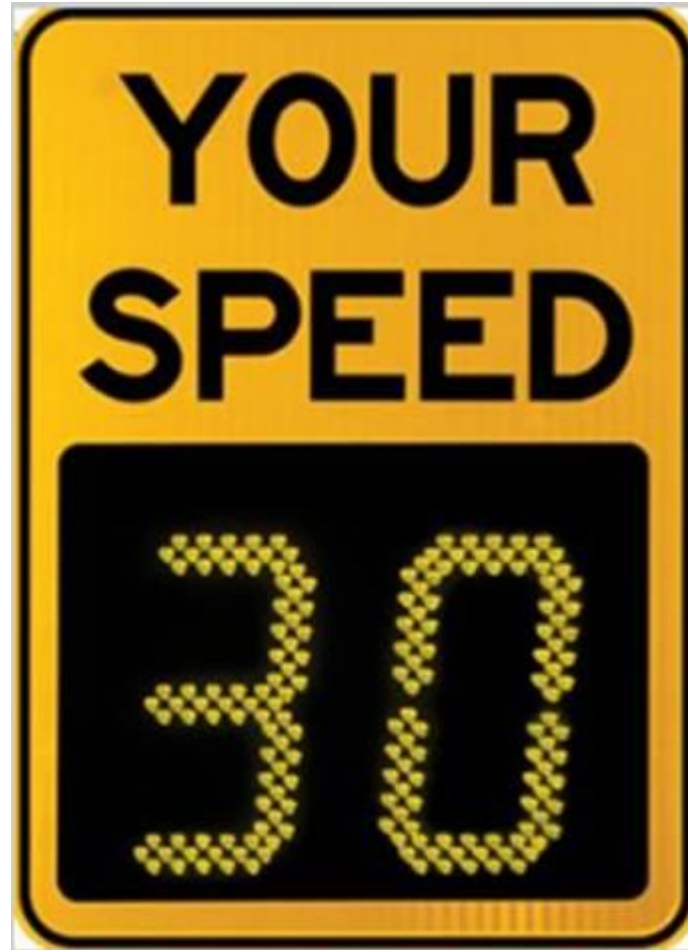
# Standard Crosswalk



# Zebra Crosswalk



# Speed Display Board





# Small Group Discussions

# Stay Engaged

## Join our Facebook group

Neighbourhood Traffic Review - Eastview-Nutana Suburban Centre

Public Group

About

Discussion

Members

Events

Photos

Join Group

More

Join this group to post and comment.

Search this group

About This Group

Description

The City of Saskatoon started a Neighbourhood Traffic Review (NTR) process in 2014 so that traffic engineers had the opportunity to consider the traffic patterns of a neighbourhood as a whole. This year, Eastview-Nutana Subur... See More

Group Type

Neighbors

Members · 24

Subscribe for updates at  
[www.saskatoon.ca/NTR](http://www.saskatoon.ca/NTR)

City of Saskatoon

Create Account Sign in Accessibility Engage Contact Us Search

Services for Residents Moving Around Parks, Recreation & Attractions Community, Culture & Heritage Business & Development New to Saskatoon City Hall

Home > Moving Around > Driving & Roadways > Managing Traffic > Traffic Studies > Neighbourhood Traffic Reviews

- Accessibility
- Transit
- Cycling
- Driving & Roadways**
  - Winter Road Maintenance
  - Road Maintenance & Repair
- Managing Traffic**
  - Pavement Markings
  - Traffic Noise
  - Intersections
  - Merging Guidelines
- Traffic Studies**
  - Neighbourhood Traffic Reviews**
- Driving
- Bridges
- Walking
- Parking

## Neighbourhood Traffic Reviews

A typical neighbourhood traffic review begins with a community meeting typically held between March and June, to engage area residents and hear about their concerns.

The Transportation Division then reviews the concerns and follows up with a number of assessments such as traffic volume, speed and pedestrian studies and site observations. A list of recommendations are generated, such as signage or traffic calming measures, and presented to residents at a secondary meeting typically held between September and December of the same year. Once the plan is received and agreed upon by residents, it is then submitted to City Council for approval.

Once a plan is approved by Council, the measures are implemented.

- Signage may be installed (pedestrian crosswalks, no parking, stop and yield, speed signs)
- Traffic calming measures may be installed temporary until proven effective
- Sidewalks or any other permanent measures may be installed when funding is available

Online discussions are posted at [Shaping Saskatoon](#) for one month following each of the community meetings.

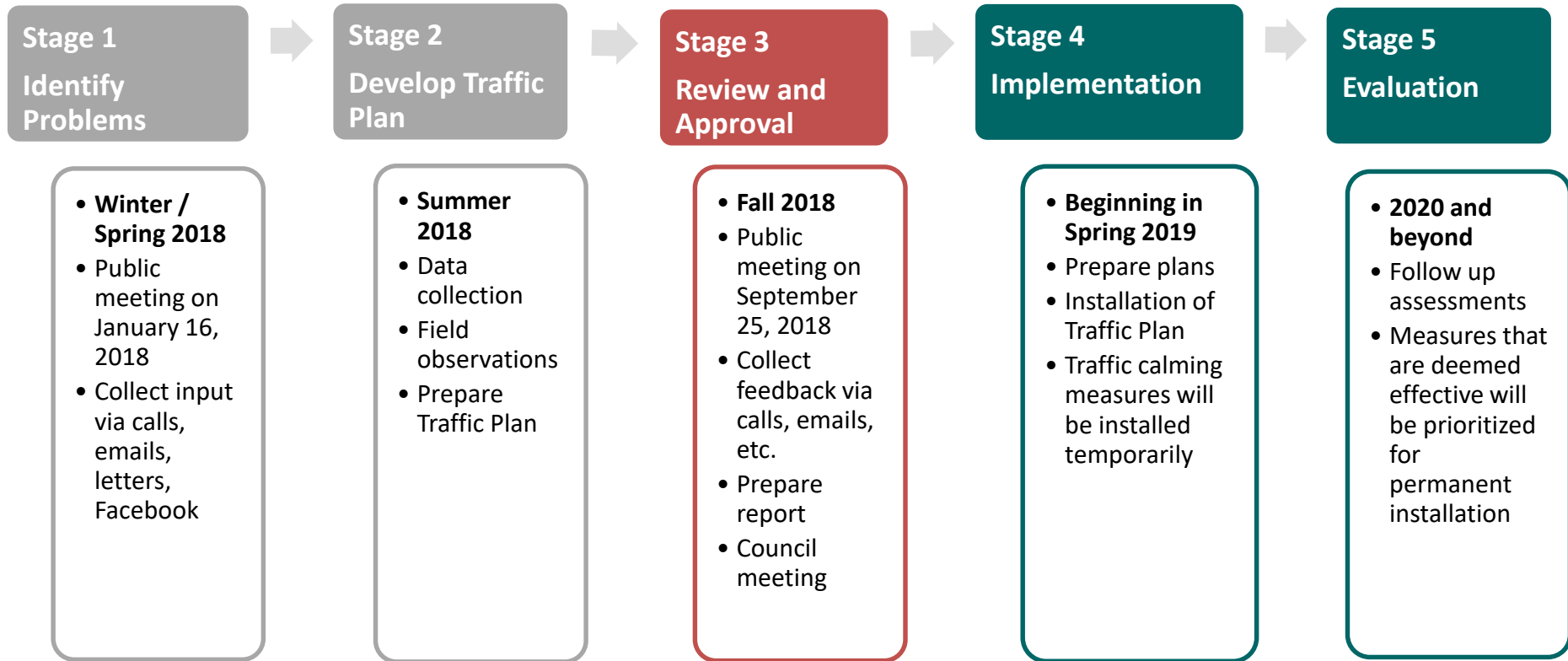
Residents can also report neighbourhood traffic concerns by calling Transportation Customer Service at 306-975-2454 or by [completing a Community Traffic Issue report](#).

[Subscribe to Traffic Review Notifications](#)

# How Did You Hear About the Meeting?

- Please take a minute to fill out the evaluation form

# Next Steps



# Next Steps

1. Send comments no later than **October 19, 2018**
2. Additional public input via the Engage page no later than **October 19, 2018**  
<https://www.saskatoon.ca/engage/eastview-nutana-suburban-centre>
3. Additional consultation if required
4. Present traffic plan to City Council as information
5. If City Council approval is required, an additional recommendation will be included in the report to City Council?
6. What if I don't agree?



