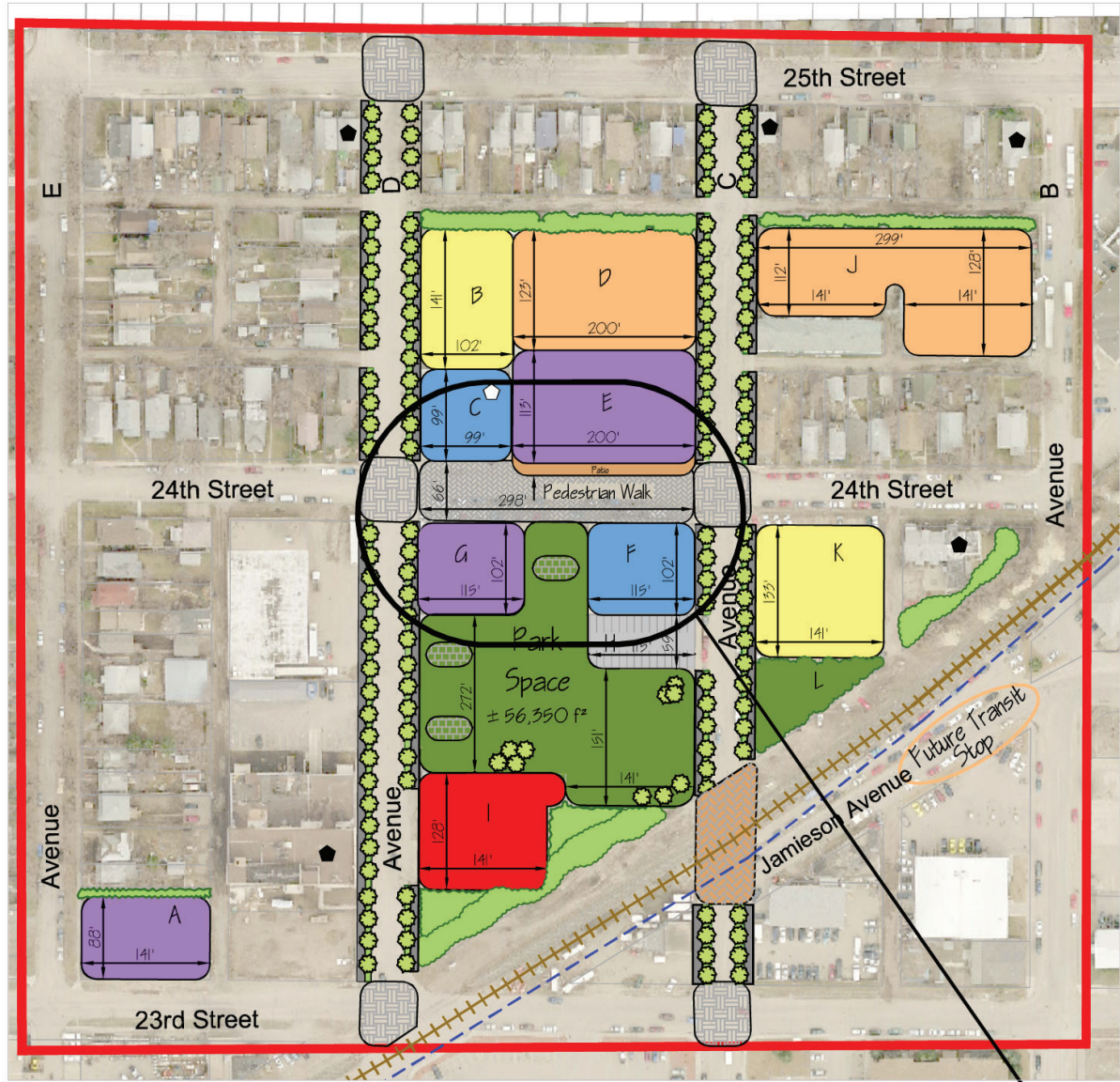


MAP 1: LAND USE CONCEPT PLAN

South Caswell Concept Plan

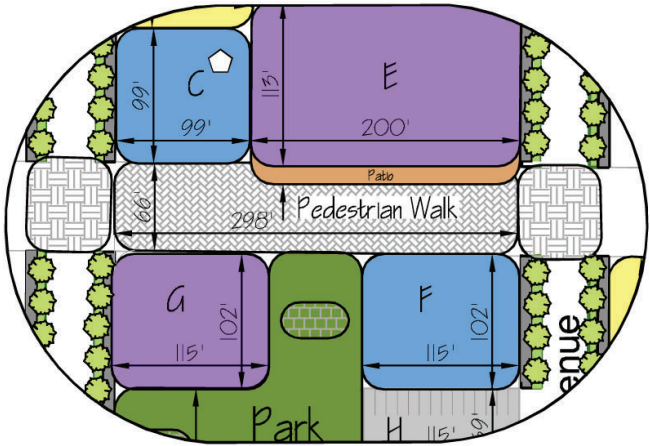


Scale : NTS

Legend:

- A. Mixed Use
- ± 12,000 f²
- B. Townhouses
- ± 15,500 f²
- C. Adaptive Re-Use including Community Space
- ± 9,500 f²
- Potential Heritage Building
- D. Medium Density Residential
- ± 26,000 f²
- E. Mixed-Use
- ± 24,000 f²
- F. Adaptive Re-Use including Community Space
- ± 22,000 f²
- G. Mixed-Use
- ± 11,400 f²
- H. Public Parking
- 28 Stalls
- I. Existing Commercial
- ± 18,000 f²
- J. Medium Density Residential
- ± 33,000 f²
- K. Town Houses
- ± 20,000 f²
- L. Park
- ± 8,000 f²

- Pedestrian Crossing
- Green Buffer
- Park Space
- Existing Commercial
- Adaptive Re-Use including Community Space
- Town Houses
- Mixed Use
- Medium Density Housing
- Parking
- Sidewalk
- Intersection Improvement
- Pedestrian Walkway
- Hardsurfaced Park Area
- Proposed Heritage Site
- Existing Heritage Site
- Railway Tracks
- Rails with Trails
- Study Area



Detail

"Community Focal Point"